

DISCOVER QATAR

Where Vision Meets Legacy

In a land where innovation embraces tradition, Qatar rises as a masterpiece of ambition and grace. It is a place where ancient culture intertwines with a future brimming with opportunity. Qatar's flourishing economy, exquisite lifestyle offerings, and unmatched safety create an irresistible allure for those who seek more than just a destination—they seek a home for their aspirations.



LUSAIL | A CITY OF DREAMS

In the heart of Qatar's evolution lies Lusail, a living testament to what imagination and determination can achieve. Envisioned as a city of the future, Lusail embodies sophistication, seamlessly blending luxury with sustainability. Its stunning waterfronts, vibrant neighborhoods, and thriving business districts tell a story of a city designed not just to be lived in, but to be cherished. From its elite schools to its world-class leisure hubs, Lusail offers a setting where families grow, opportunities flourish, and dreams take flight.





THE MARINA'S
CROWN JEWEL

Redefining Coastal Luxury

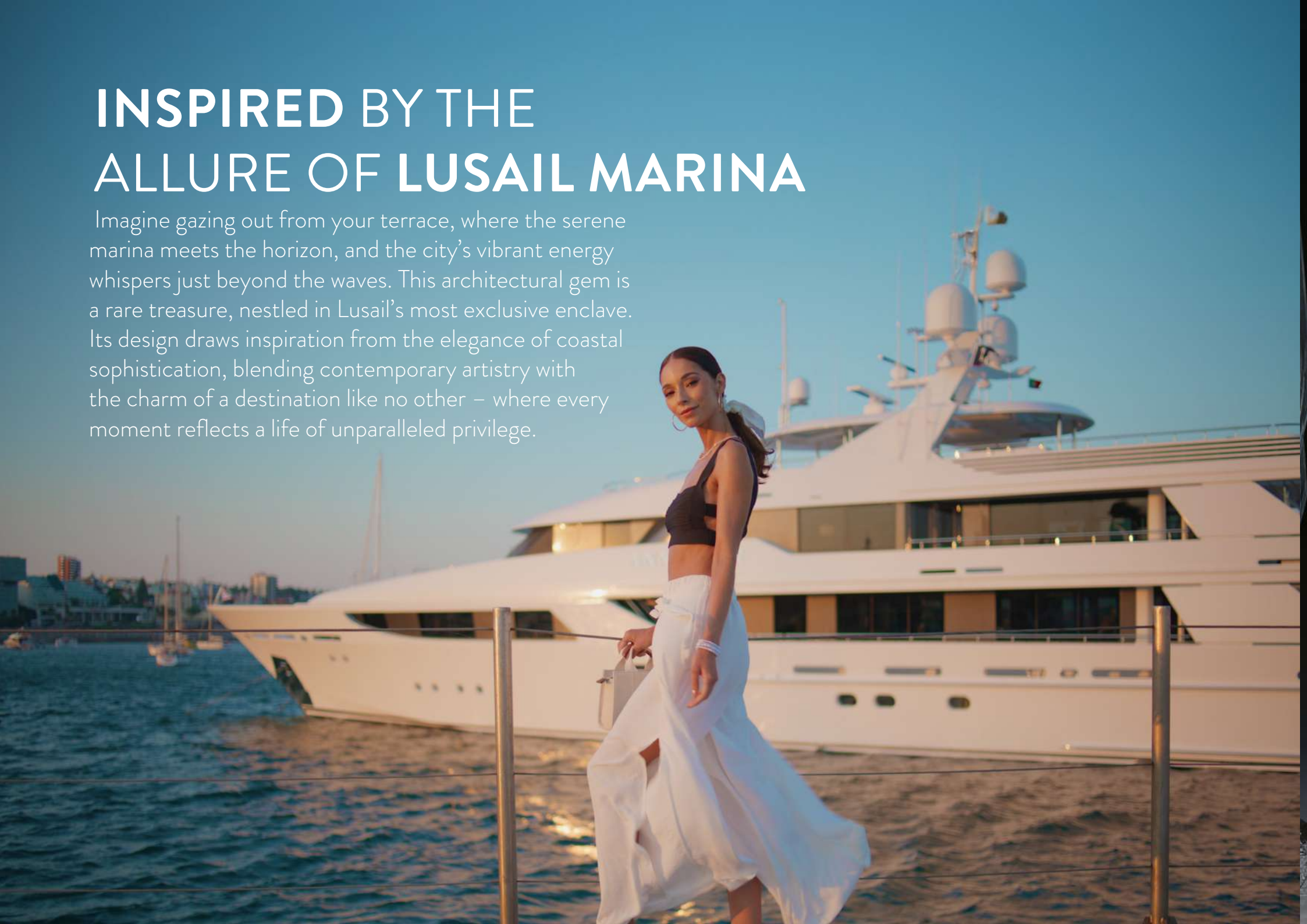
SCULPTED LUXURY

Defined by graceful contours and dynamic forms, the design embodies bold elegance and subtle movement, revealing timeless allure from every angle.



INSPIRED BY THE ALLURE OF LUSAIL MARINA

Imagine gazing out from your terrace, where the serene marina meets the horizon, and the city's vibrant energy whispers just beyond the waves. This architectural gem is a rare treasure, nestled in Lusail's most exclusive enclave. Its design draws inspiration from the elegance of coastal sophistication, blending contemporary artistry with the charm of a destination like no other – where every moment reflects a life of unparalleled privilege.



CVIEW DNA

Inspired by the rare and extraordinary, CVIEW embodies a visionary spirit that redefines elegance and exclusivity. This architectural masterpiece is a tribute to the unparalleled charm of its location, offering a fusion of breathtaking views and avant-garde design. With meticulous craftsmanship, premium finishes, and innovative smart living features, CVIEW is more than a residence, it's a testament to a lifestyle where rarity meets perfection.



TABLE OF CONTENT

01

THE CONCEPT

02

THE ATTRACTIONS

03

DESIGN & SPECIFICATIONS



01

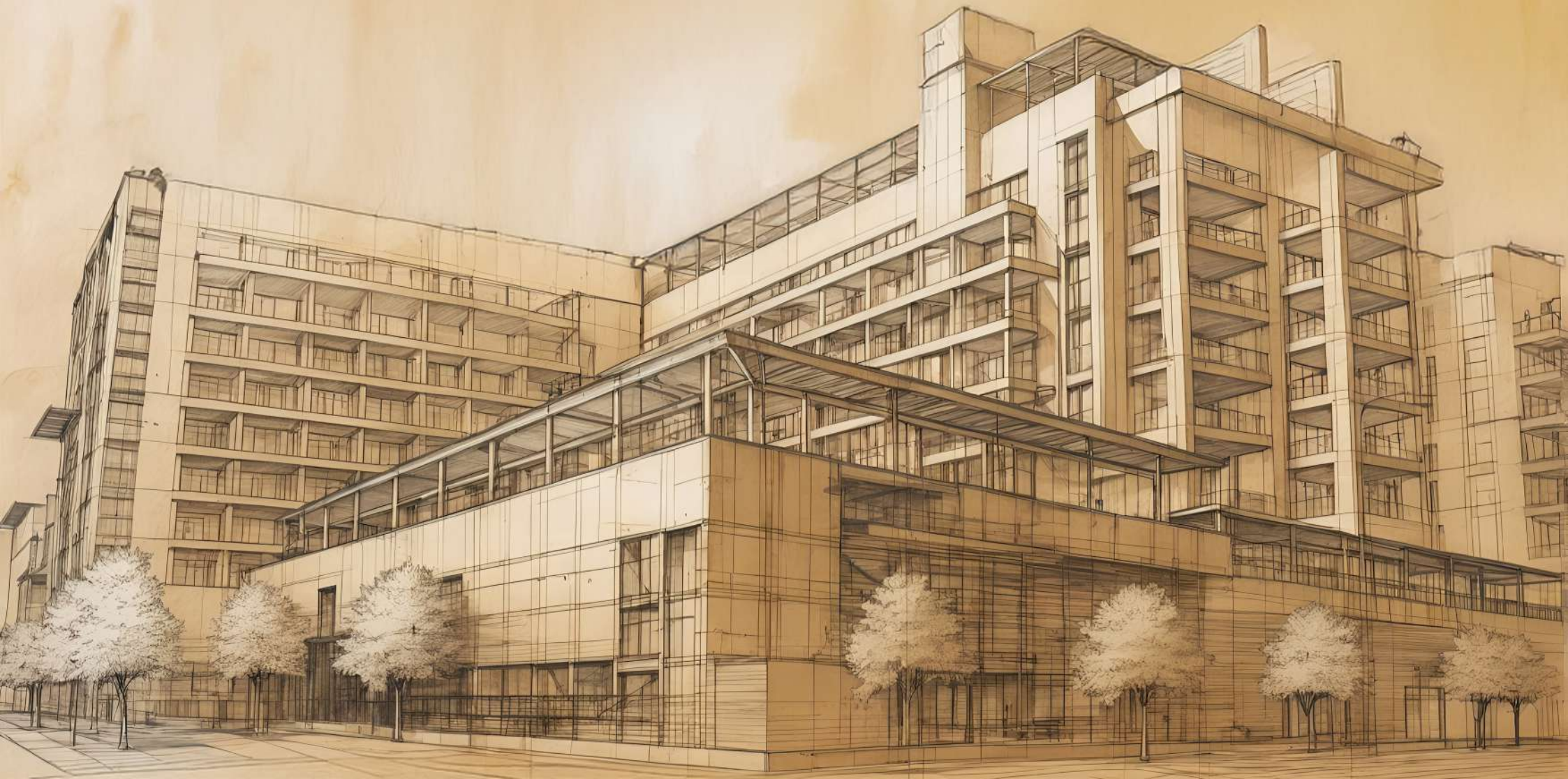
THE CONCEPT



THE CONCEPT

MASTERPIECE IN EVERY DETAIL

Every **line, curve,** and **shadow** reflects a vision **crafted** with **precision** and **care**.



An aerial photograph of a coastline. The left side of the image is dominated by a vast expanse of turquoise ocean water with visible ripples and small whitecaps. A jagged, irregular line of white surf separates the water from a wide, sandy beach on the right. The beach is a light tan color with some darker patches. Two small figures of people are visible on the beach, one near the bottom right and another further up. The overall composition is clean and minimalist, emphasizing the natural beauty of the coastal environment.

THE CONCEPT

NAVIGATE THE FUTURE ANCHOR IN LUXURY



THE CONCEPT

CULTIVATING L'ART DE VIVRE,
INSPIRED BY THE COASTAL
ELEGANCE OF LUSAIL

A woman is surfing on a large, curling wave. The scene is bathed in the warm, golden light of a sunset or sunrise, with the sun low on the horizon behind the surfer. The water is a deep blue-green, and the sky is a pale, hazy yellow. The surfer is silhouetted against the bright light, and her hair is blowing in the wind. The overall mood is serene and adventurous.

THE CONCEPT

CELEBRATING THE ART OF LIVING BY THE SEA

02

THE ATTRACTIONS





THE ATTRACTIONS LOCATION

Nestled in the heart of Lusail Marina, C View Residence offers an unparalleled living experience, seamlessly blending modern sophistication with exclusive accessibility. Directly behind Place Vendôme Mall and opposite the VIP entrance, it provides breathtaking vistas and effortless access to world-class amenities. Embrace a lifestyle of elegance and exclusivity at C View Residence.



WALDORF
ASTORIA

LE ROYAL
MERIDIAN



VIP
ENTRANCE

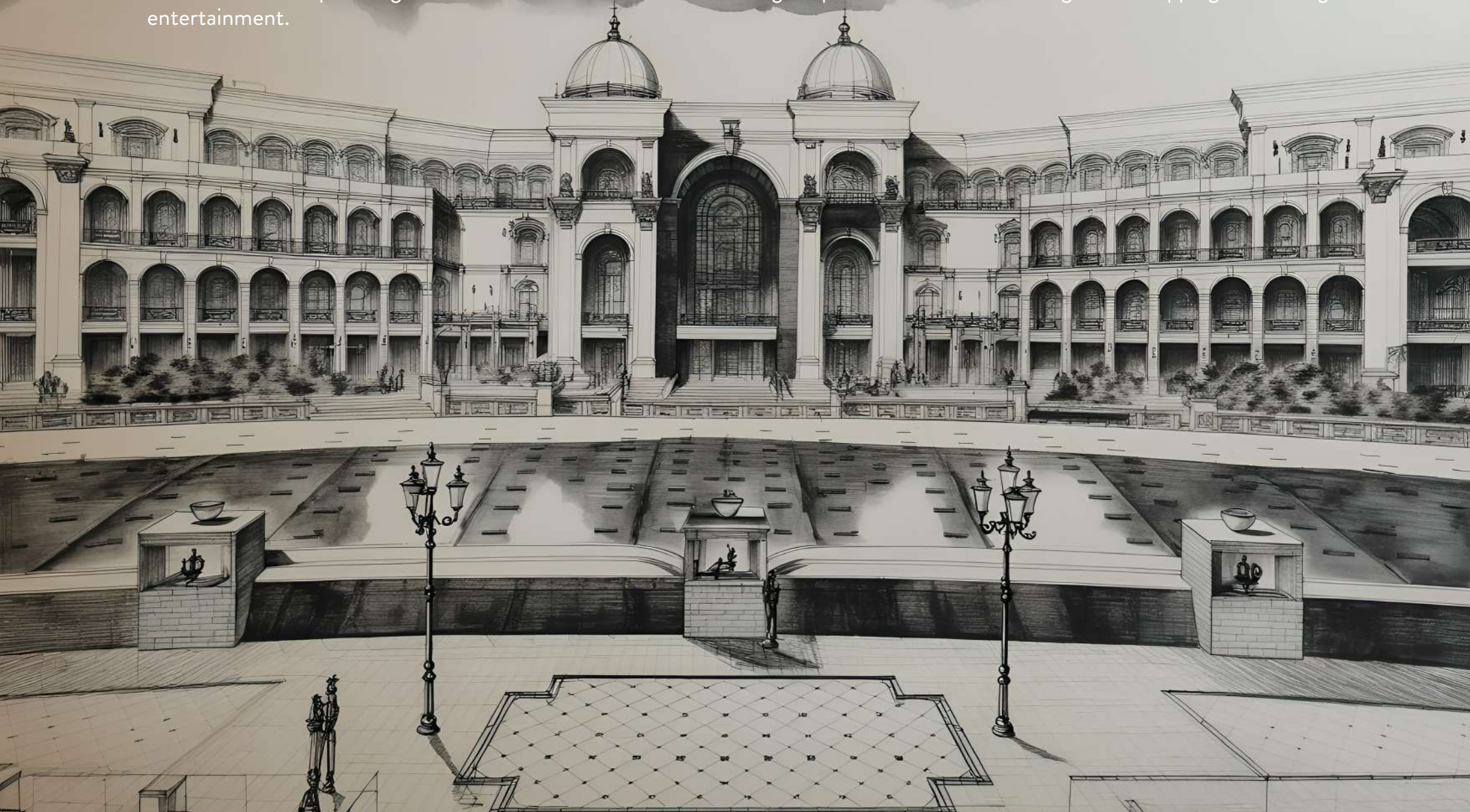
VENDOME
MALL

THE ATTRACTIONS THE MAP

THE ATTRACTIONS

VENDÔME MALL

Place Vendôme Mall in Lusail redefines luxury with Parisian-inspired elegance. Spanning 1,150,000 square meters, it features over 580 premium retail outlets, an exclusive designer wing, and two five-star hotels — **Le Royal Méridien** and **Palais Vendôme**. A scenic water canal and captivating fountain shows add to its charm, making it a premier destination for high-end shopping, fine dining, and entertainment.



THE ATTRACTIONS
WALDORF ASTORIA
LUSAIL



03

DESIGN & SPECIFICATIONS



DESIGN & SPECIFICATIONS
THE INTERIOR
“ CRAFTED FOR SOPHISTICATION ”





DESIGN & SPECIFICATIONS

THE INTERIOR

A Haven of Refined Elegance

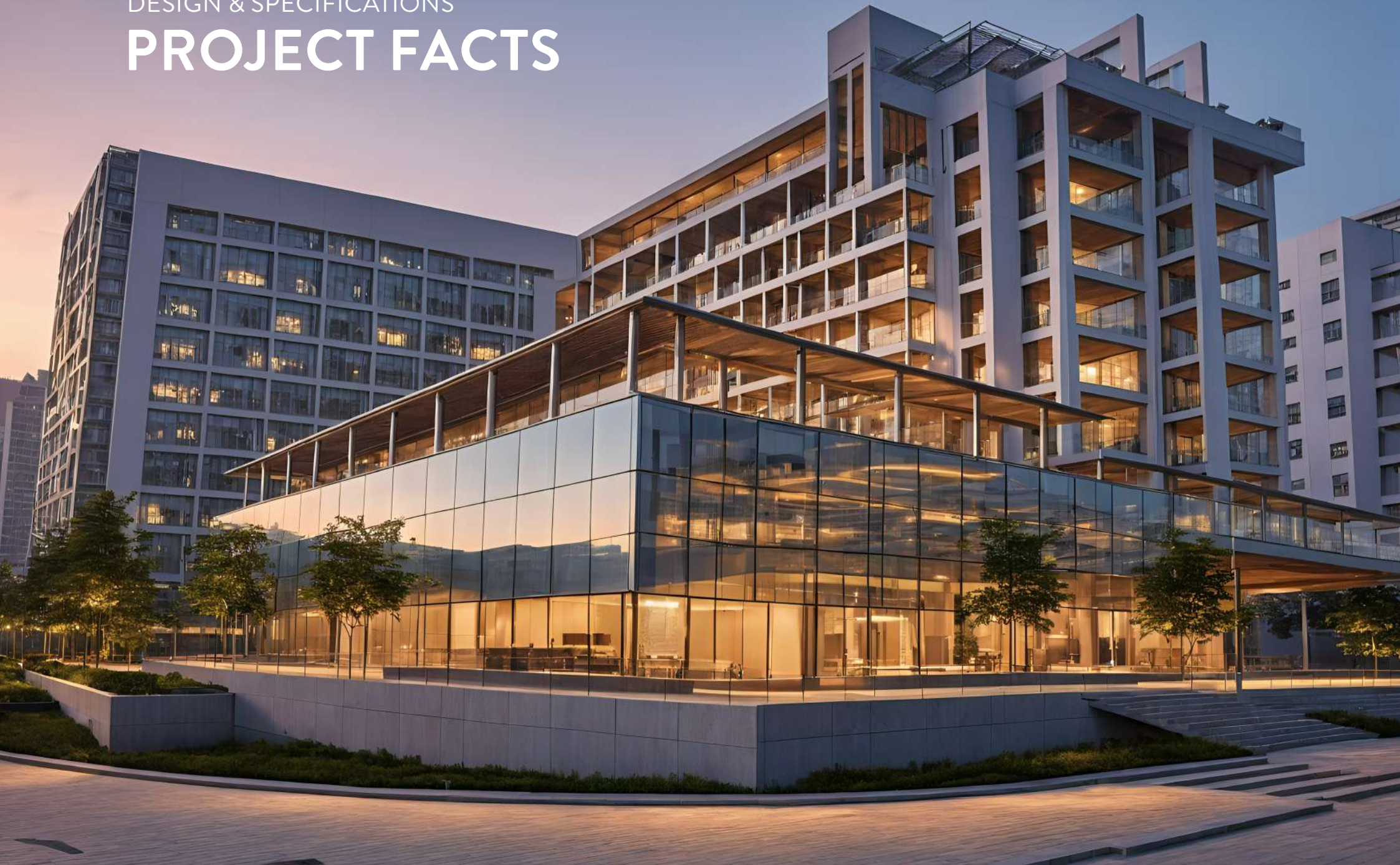
Discover a space where every element is meticulously curated to offer an oasis of comfort and style. From bespoke furnishings to ambient lighting, this interior exemplifies the pinnacle of sophisticated living. Indulge in an environment that not only meets but exceeds the standards of luxury, providing a sanctuary that is both timeless and contemporary.





DESIGN & SPECIFICATIONS

PROJECT FACTS



PROJECT FACTS

GENERAL OVERVIEW

- Total Apartments: **149**
- Floors: **1 to 8**
- Typologies: A variety of configurations including :
- **1-bedroom, 2-bedroom, and 3-bedroom apartments.**

APARTMENTS BREAKDOWN

Standard 1-Bedroom Flat:

Floor Area: 80.75 sqm
Balcony Area: 15.16 sqm
Total Area: 95.91 sqm
Views: Pool | Vendome Mall | Sea

Large 1-Bedroom Flat (Type A):

Floor Area: 93.67 sqm
Balcony Area: 9.3 sqm
Total Area: 102.97 sqm
Views: Pool | Sea

Large 1-Bedroom Flat (Type B):

Floor Area: 106.09 sqm
Balcony Area: 15.32 sqm
Total Area: 121.41 sqm
Views: Agora Hotel | Vendome mall

Large 1-Bedroom Flat (Type C):

Floor Area: 103.76 sqm
Balcony Area: 33.2 sqm
Total Area: 136.96 sqm
Views: Sea

2 Bedroom Flat (Type 1):

Floor Area: 118.68 sqm
Balcony Area: 14.94 sqm
Total Area: 143.42 sqm
View: Vendome Mall

2 Bedroom Flat (Type 2):

Floor Area: 128.1 sqm
Balcony Area: 15.32 sqm
Total Area: 133.62 sqm
View: Agora Hotel

2-Bedroom (Type 3-4):

Floor Area: 160.5 sqm
Balcony Area: 29.51 sqm
Total Area: 190.01 sqm
Views: Agora Hotel

2-Bedroom Type (6-7):

Floor Area: 160.1 sqm
Balcony Area: 30.14 sqm
Total Area: 190.24 sqm
Views: C6 | Pool

3 Bedroom Flat:

Floor Area: 208.43 sqm
Balcony Area: 37.96 sqm
Total Area: 246.39 sqm
Views: Panoramic Sea

