

MAISON

— PG —

MAISON

AT AL FURJAN

— PG —
MAISON
AT AL FURJAN

Contemporary family
living redefined at Al Furjan's
most coveted address

DEVELOPMENT BY

— PG —

Presented by PG Maison Real Estate Development, where our singular mission is to set the standard in private development. We meticulously curate boutique, contemporary residences of unparalleled quality, creating an environment where families thrive, and investors prosper.

39th Floor, HDS Business Centre, Cluster M, JLT, Dubai, UAE www.puregoldliving.com



WHERE DREAMS TAKE FLIGHT...

Nestled in Dubai’s prestigious commuter hub, PG Maison at Al Furjan epitomizes the essence of contemporary, chic living.

Enjoy seamless access to the city’s bustling commercial hubs, pristine beaches, and upscale retail and dining districts. Our secure enclave boasts world-class facilities and family-friendly amenities, promising a lifestyle of comfort and convenience for every generation.

Conveniently located just 20 minutes from Al Maktoum International Airport and 30 minutes from Dubai International Airport, travel becomes a breeze, ensuring more time for what truly matters—family.

- 5mins

DISCOVERY GARDEN METRO
ETIHAD RAIL
- 10mins

IBN BATTUTA
- 15mins

MALL OF EMIRATES
- 20mins

DUBAI MARINA
BURJ AL ARAB
AL MAKTOUM INTERNATIONAL AIRPORT
- 25mins

THE DUBAI MALL
PALM JUMEIRAH



UNVEILING RESORT-STYLE LIVING AT ITS FINEST

Indulge in moments of self-discovery at our serene yoga studio, where inner peace awaits. For those seeking exhilarating experiences, our rooftop padel court offers friendly competition amidst panoramic vistas.

Families will delight in our diverse range of activities catering to all ages. While kids splash in the dedicated children's pool, parents can unwind with a good book or savour al fresco dining in our BBQ area. Whether you're seeking adventure or relaxation, there's an experience tailored just for you.

- 

YOGA STUDIO
- 

JOGGING LOOP
- 

FULLY EQUIPPED GYM
- 

ROOF TOP PADEL COURT
- 

KIDS PLAY AREA
- 

SQUASH COURT
- 

JACUZZI
- 

ROOF TERRACE
- 

OUTDOOR BBQ WITH PRIVATE SEATING
- 

ROOF TOP SWIMMING POOL
- 

KIDS POOL
- 

STUDY/ HOME OFFICE
- 

GROUND FLOOR RETAIL
- 

PET FRIENDLY
- 

CONCIERGE SERVICE
- 

INFINITY SWIMMING POOL
- 

HIGH SPEED CONNECTIVITY
- 

HOME AUTOMATED
- 

CCTV



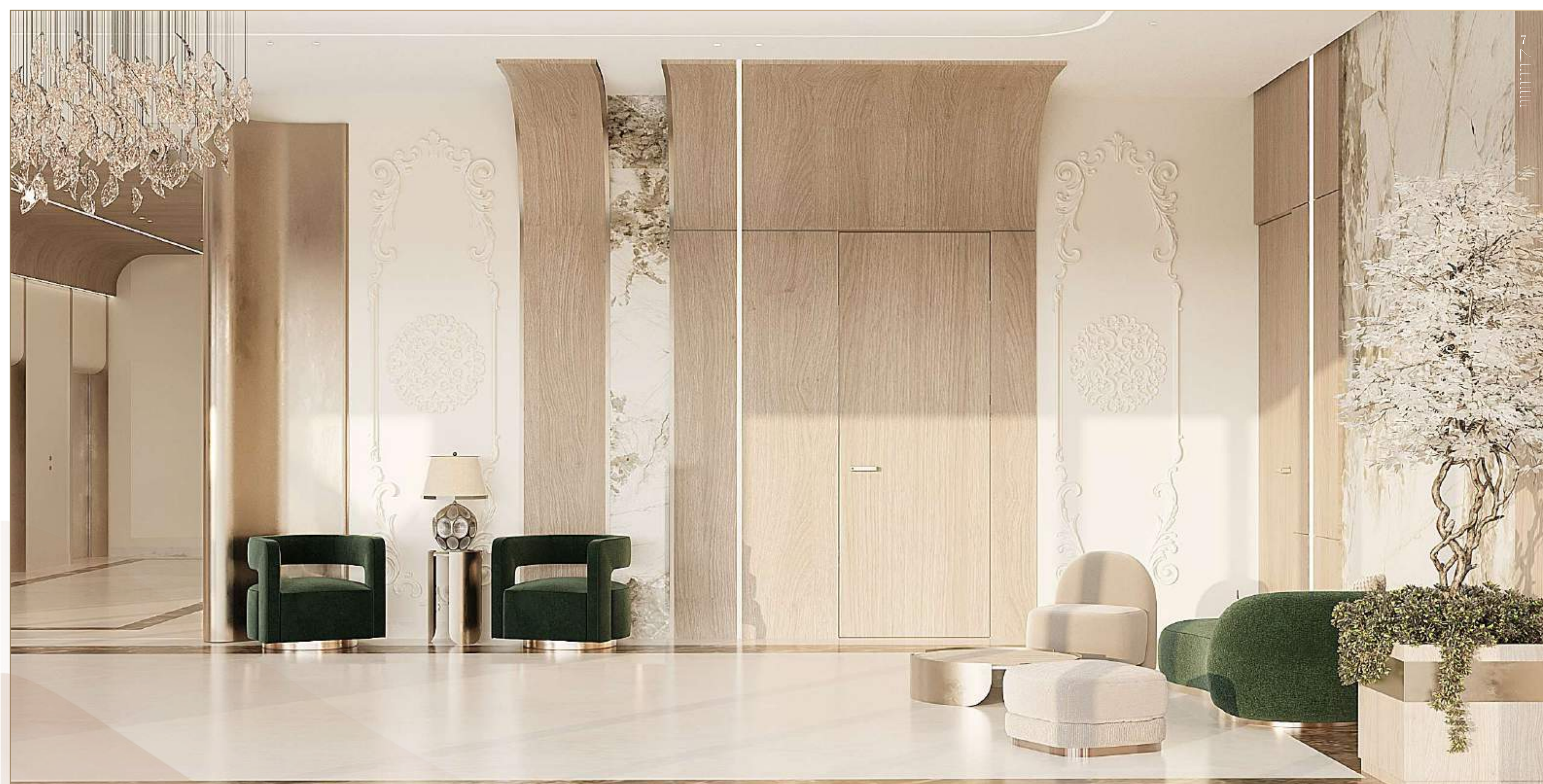
All images are for illustration purpose only.

WELCOME HOME



Step into our welcoming lobby, bathed in soft light and exuding elegance at every turn. Infused with a touch of French flair, the space radiates sophistication, setting the tone for the luxurious lifestyle that awaits within.







EFFORTLESS LIVING, REDEFINED



Natural light floods our stunning living spaces, accentuating the carefully curated materials and finishes that adorn each residence.

Every unit boasts its own expansive private balcony, inviting you to bask in the beauty of your surroundings.

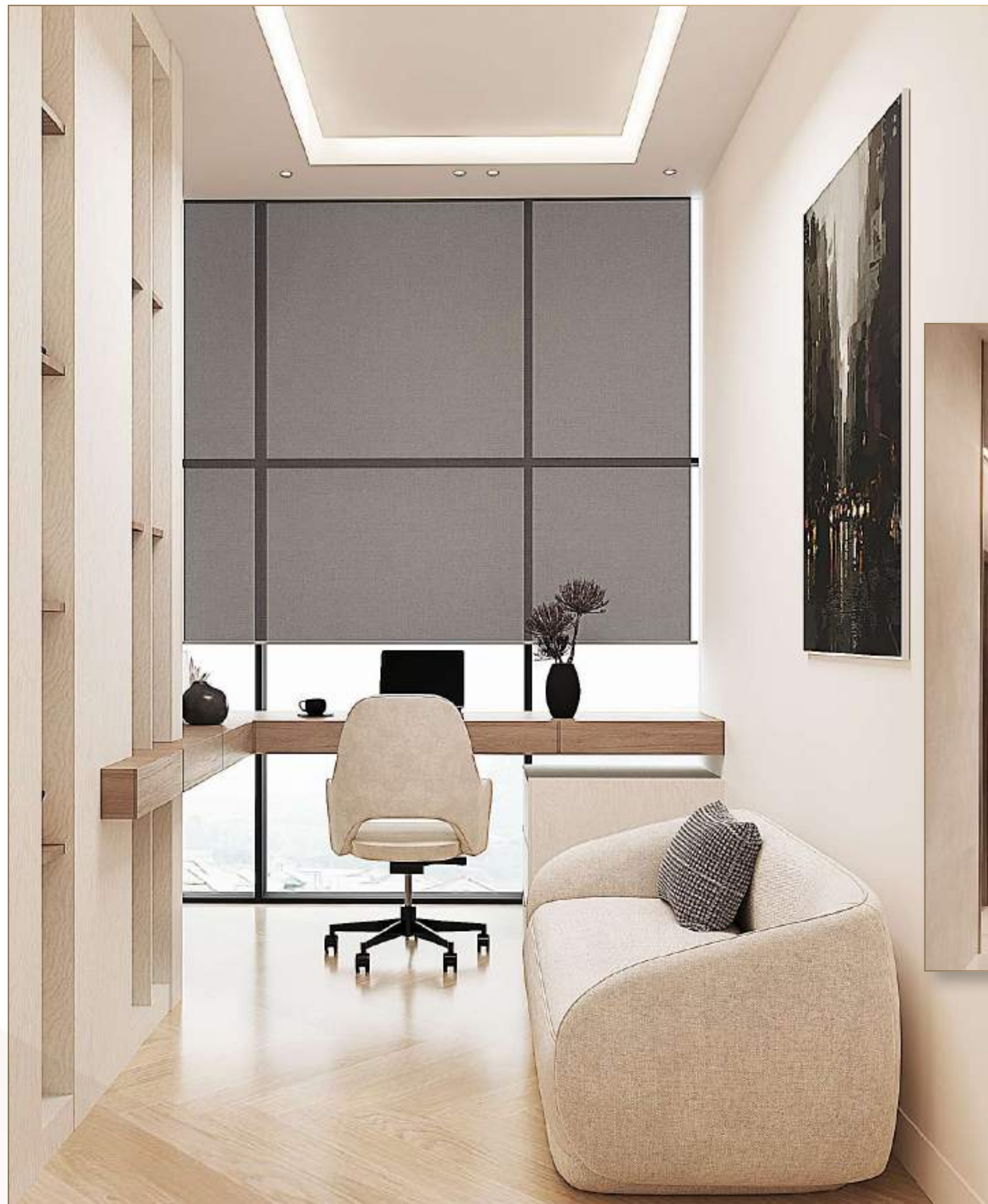






ELEVATE YOUR LIFESTYLE

From the chic elevator lobby to the versatile study/home office, every space is designed to inspire. Find solace in a tranquil sanctuary where ambitions flourish, equipped with ample room for productivity and seamless connectivity.



ELEVATOR LOBBY



STUDY / HOME OFFICE

LUXURY MEETS COMFORT

Retreat into serene bedrooms designed for unparalleled comfort and relaxation. Each meticulously crafted space boasts an en-suite bathroom and fitted wardrobes providing ample storage, while opulent materials elevate the ambiance for restful nights.

WARDROBE



BEDROOM 1

BATHROOM



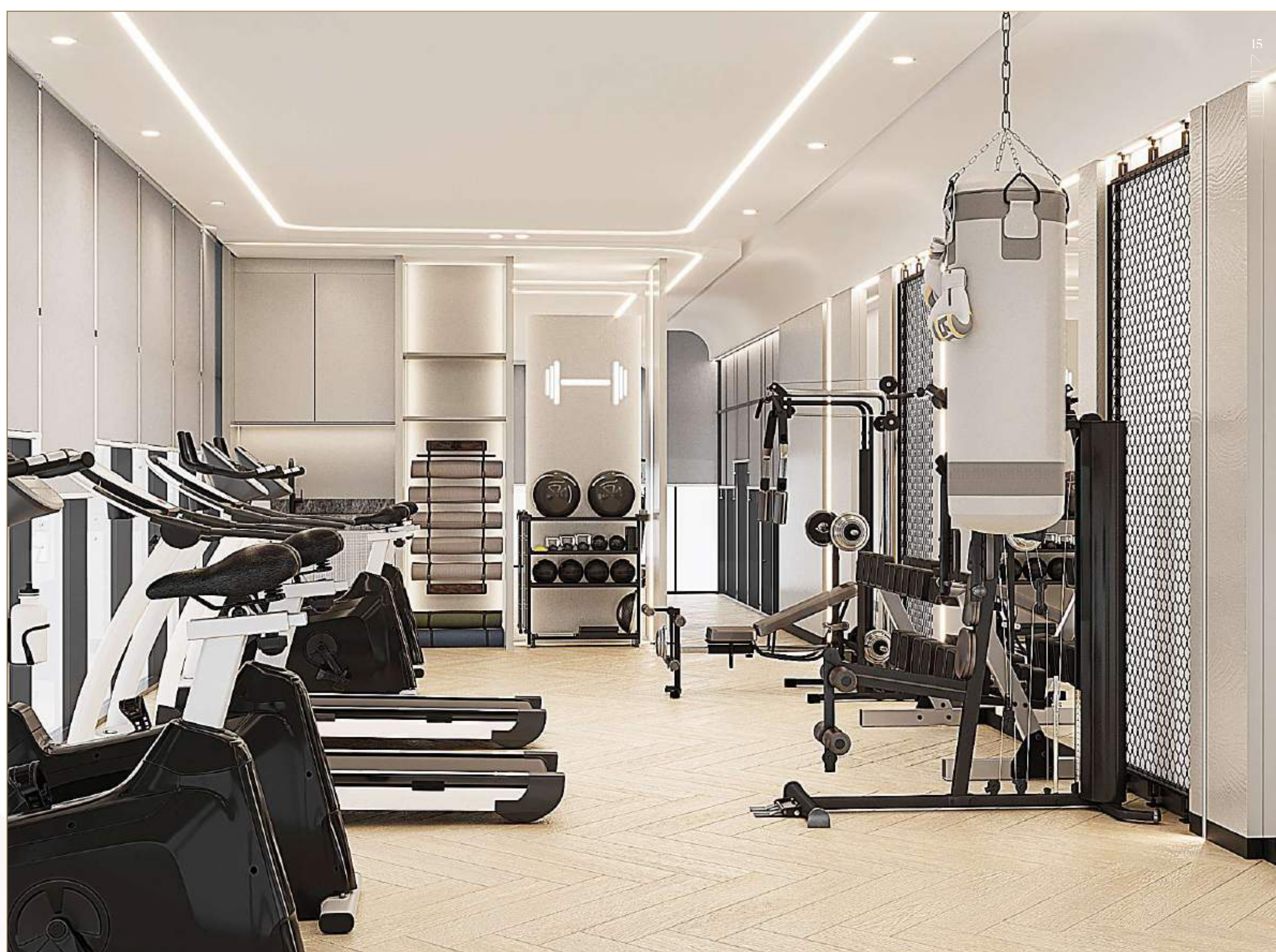
BEDROOM 2



ACHIEVE PEAK WELLNESS



Rejuvenate your body and mind in our state-of-the-art fitness centre, nestled atop our rooftop oasis. From yoga sessions to friendly matches on the padel court, every amenity is designed to elevate your mind, body and soul.



UNVEILING FLOORPLANS & SPECIFICATIONS

At PG Maison in Al Furjan, visionary architecture meets elegant interiors, adorned with luxurious furnishings.

With just four residences per floor, each layout is meticulously crafted to offer a timeless lifestyle. Experience seamless flow, generous living spaces, and premium finishes, enhanced by carefully selected materials.

- Refined and stylish colour scheme
- Continuous wooden herringbone flooring
- Integrated storage solutions in every bedroom, featuring built-in wardrobes with sliding doors for maximum space utilization
- Complete kitchen furnished with built-in washer/dryer, refrigerator/freezer, and gas oven with hob
- Expansive balcony for outdoor relaxation and enjoyment.

APARTMENT 1 & 4

TYPICAL FLOOR

UNIT AREA

Suite Area

1133 sq.ft

Private Balcony Area

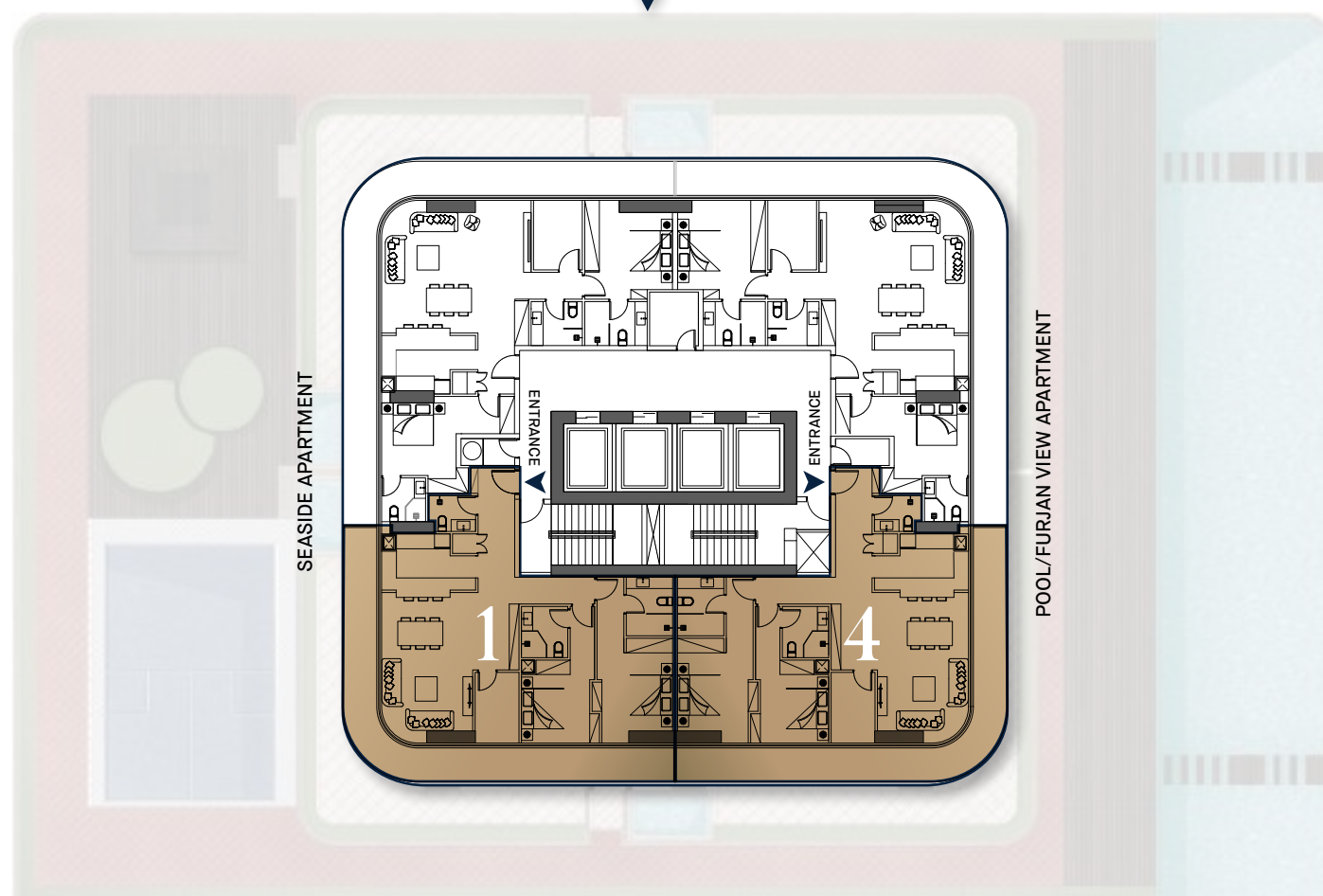
349 sq.ft

TOTAL AREA

1482 sq.ft

- 2-bedroom apartment
- Open plan living and dining area
- 2 x en suite double bedrooms
- Study/home office
- Separate kitchen & laundry
- Guest bathroom
- Private balcony

MAIN ENTRANCE



APARTMENT 2 & 3

TYPICAL FLOOR

UNIT AREA

Suite Area
1139 sq.ft

Private Balcony Area
426 sq.ft

TOTAL AREA
1566 sq.ft

- 2-bedroom apartment
- Open plan living and dining area
- 2 x en suite double bedrooms
- Study/home office
- Separate kitchen & laundry
- Guest bathroom
- Private balcony

