



# BLISS GARDENS

NEW SLATA

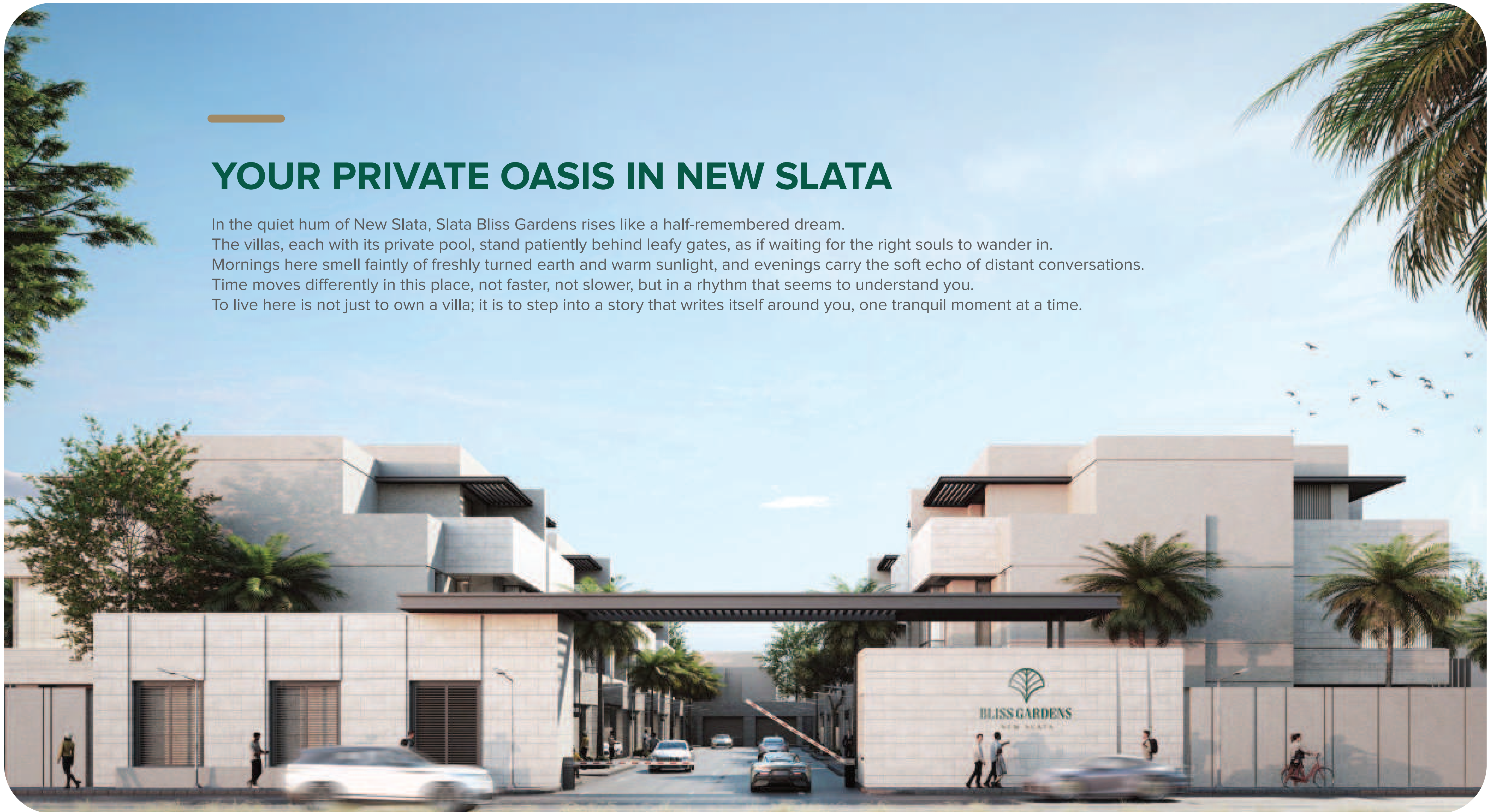
---

**THE ART OF LIVING WELL**

---

# YOUR PRIVATE OASIS IN NEW SLATA

In the quiet hum of New Slata, Slata Bliss Gardens rises like a half-remembered dream. The villas, each with its private pool, stand patiently behind leafy gates, as if waiting for the right souls to wander in. Mornings here smell faintly of freshly turned earth and warm sunlight, and evenings carry the soft echo of distant conversations. Time moves differently in this place, not faster, not slower, but in a rhythm that seems to understand you. To live here is not just to own a villa; it is to step into a story that writes itself around you, one tranquil moment at a time.





---

## CONNECTED. LIVELY. YOURS.

Bliss Gardens is perfectly nestled in the vibrant heart of New Slata, a neighborhood that pulses with life and energy.

Here, every convenience is within reach: cafés, boutiques, schools, and leisure spots create a dynamic yet welcoming environment.

The streets are alive with movement, yet the villas themselves offer a private sanctuary away from the bustle.

From this prime location, residents enjoy seamless access to major roads and landmarks, making both daily life and weekend adventures effortlessly connected.

Living here means being at the center of a thriving community while still enjoying the calm and comfort of your own premium villa.



Directly on  
the Ring Road



Neighbouring  
Lively Compounds



2 Mins  
to Al Arabi Sports Club



8 Mins  
to Al Muntazah Park



10 Mins  
to Al Maamora Family Park



10 Mins  
to Dar Al Salam Mall



25 Mins  
to Al Thumama Stadium



15 Mins  
to Medical Commission



10 Mins  
to West Walk Airport



18 Mins  
to Villaggio Mall



---

## ARCHITECTURAL BEAUTY AT FIRST SIGHT

The exterior of Bliss Gardens reflects modern design and timeless elegance. Each villa is thoughtfully crafted with clean lines, natural stone accents, and warm, inviting textures that harmonize with the surrounding landscape.

Private driveways lead to spacious entrances, while manicured gardens and greenery frame every corner, offering both privacy and a sense of openness.

The villas' private pools glisten under the sun, creating a serene oasis that extends the living space outdoors.

Every detail, from the façade to the landscaping, has been designed to leave a lasting impression, making the exterior not just a welcome, but a statement of refined living.





V.01

V.02

















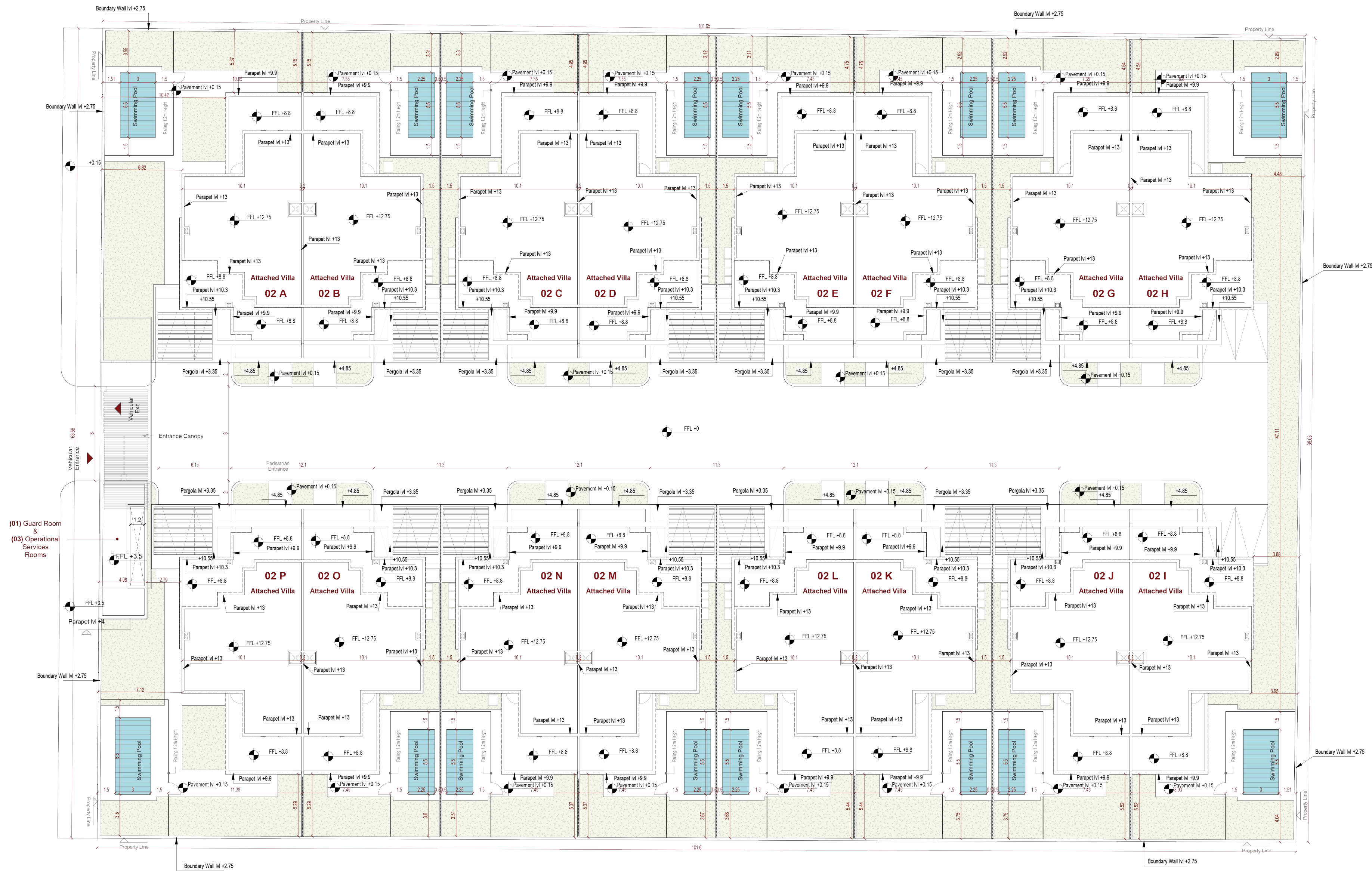




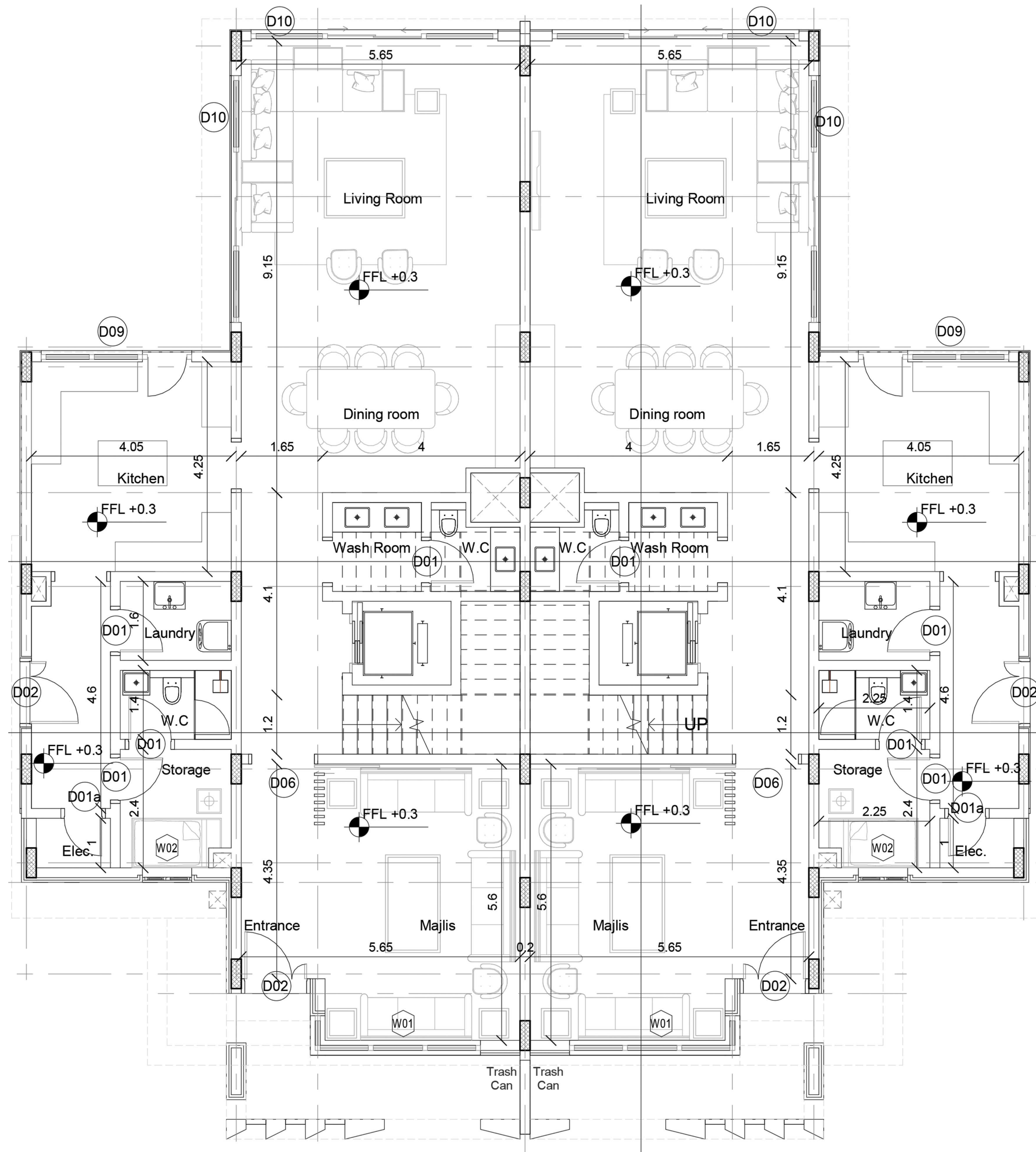




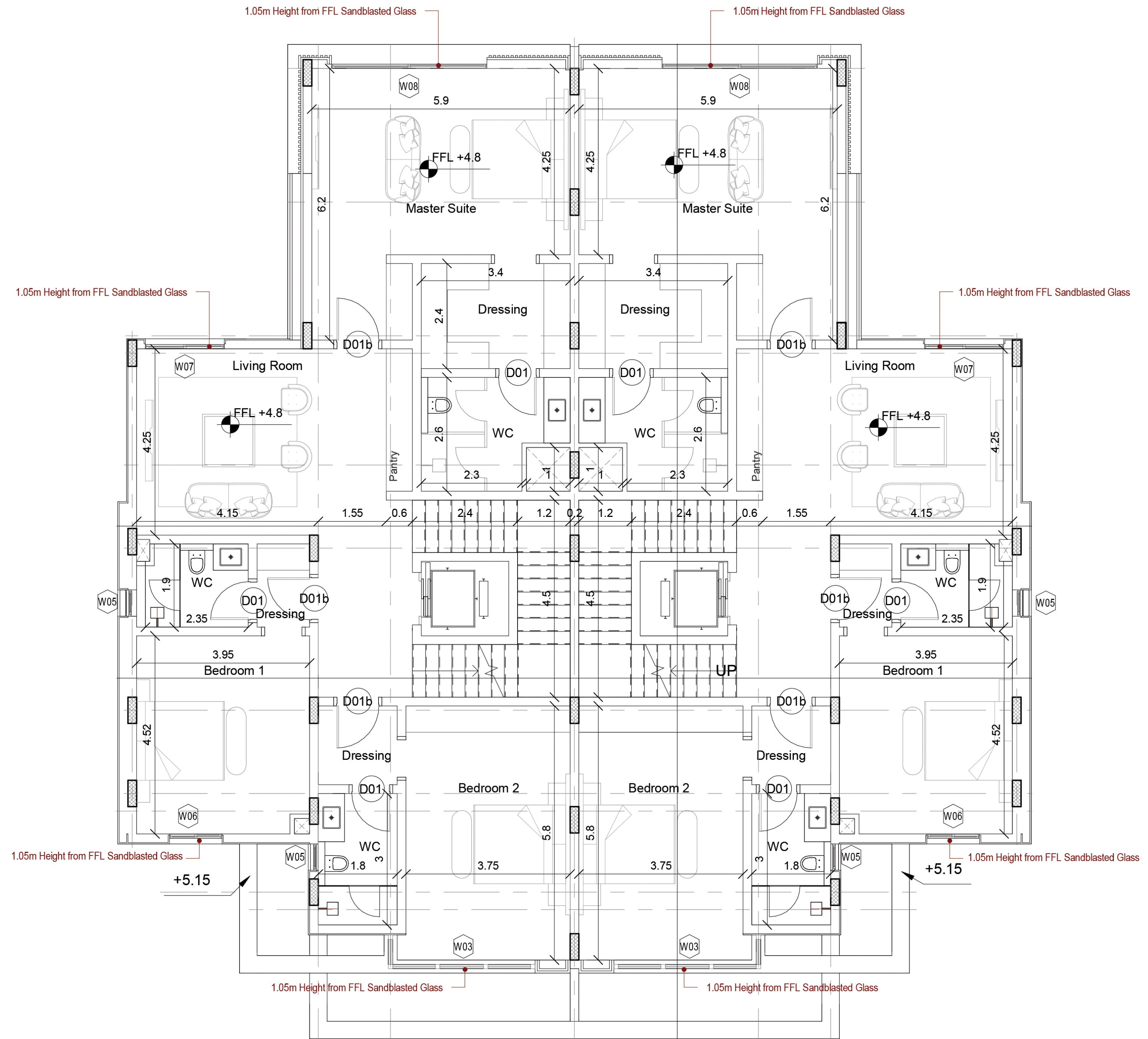




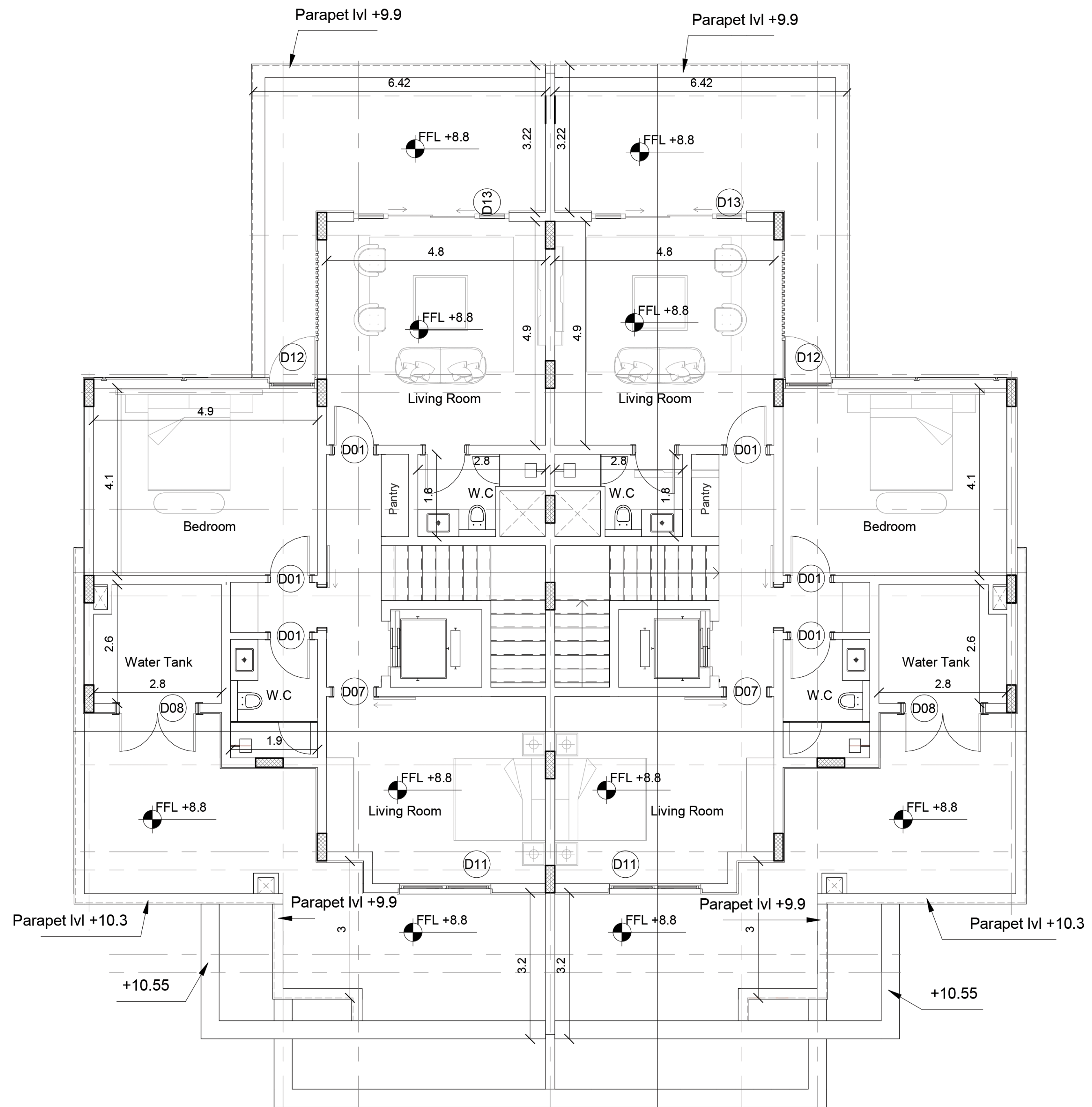
# GROUND FLOOR PLAN - OVERALL



**GROUND FLOOR  
PLAN - TYPICAL**



**FIRST FLOOR  
PLAN - TYPICAL**



**PENTHOUSE  
FLOOR PLAN  
- TYPICAL**



---

## THE COMFORT OF PRIVATE LEISURE

The pool designed just for you, its surface still and reflective, like a mirror for thoughts you didn't know you had.

In the early morning, the water shimmers faintly, catching the first light and scattering it across the surrounding garden.

Sometimes, the air carries the distant hum of the city, but here, by the edge of your own pool, time seems to bend, minutes stretch, worries dissolve, and everything feels suspended between reality and a quiet, gentle dream.

It is a place not just to swim, but to linger in the soft rhythm of your own calm.



## BLISS GARDENS NEW SLATA

EASE INTO OWNERSHIP

DOWN PAYMENT	PAYMENT PLAN	HANDOVER
10%	5 YEAR	OCT 2027

