



# TAWNY

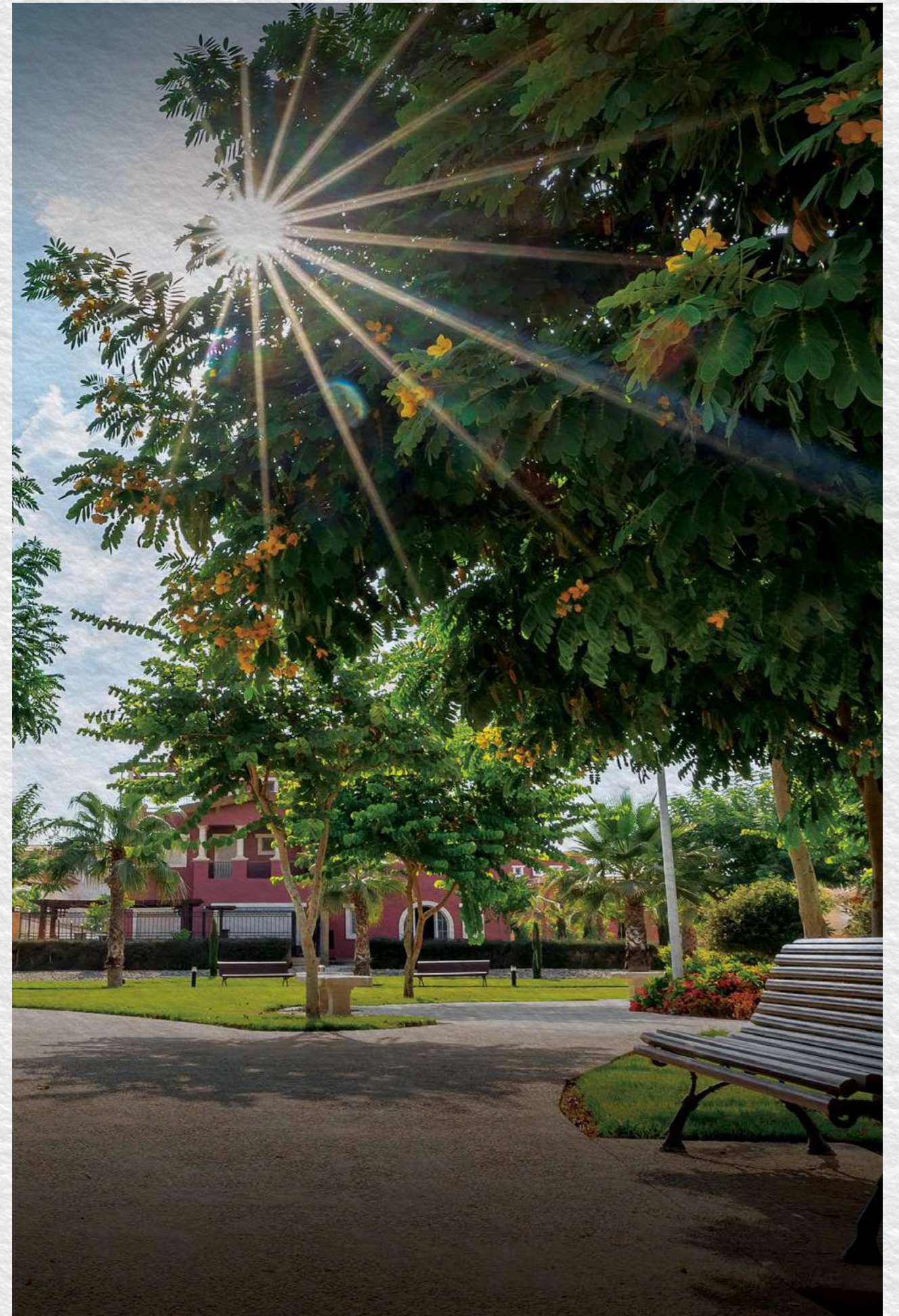
6TH OF OCTOBER

A COLLECTION OF  
REFINED VILLAS



## ABOUT HYDE PARK DEVELOPMENTS

Hyde Park Developments is the main owner and developer of Hyde Park New Cairo. Spread over 6 million square meters, this project is nestled amidst the breath taking seemingly innate greenery of the 6 hundred thousand square meters' park. As the company's flagship project, it has been revamped with new zones and a new set of offerings and products in the company's efforts to tailor to its growing family of owners. With Hydeout, the projects commercial area currently launched and the upcoming Business District, swimming academy in partnership with Egyptian champion Farida Othman and Ryze Sporting Club, Hyde Park New Cairo will change East Cairo. Expanding its offering of a unique lifestyle, Hyde Park Developments now brings two projects to West Cairo extending over 424, 200 square meters.





A BOUTIQUE COMMUNITY

WELCOME TO  
TAWNY

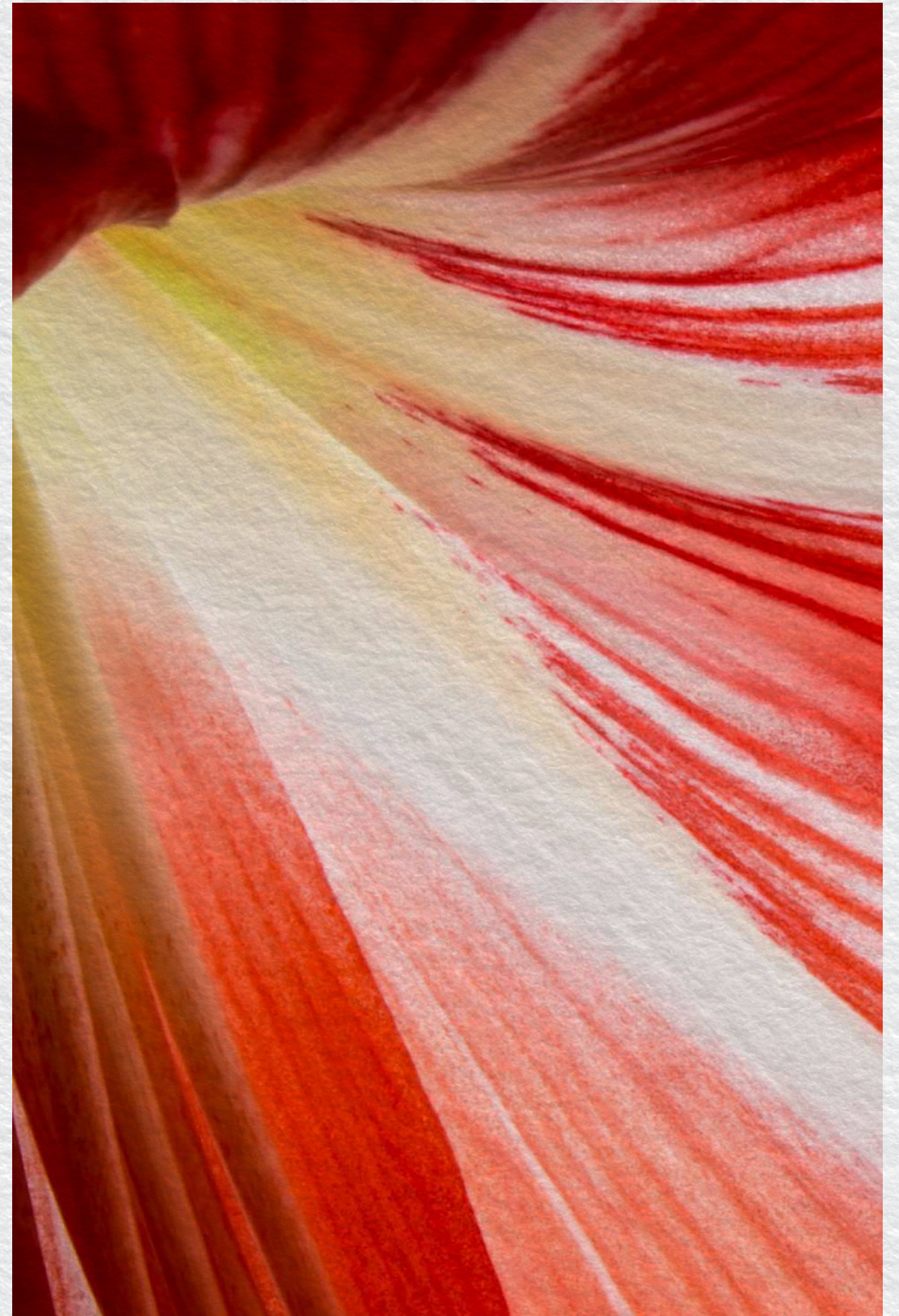




A BOUTIQUE COMMUNITY

## A BOUTIQUE DEVELOPMENT

Celebrating the serenity of life and bringing people together in a wholesome community full of flavour and colour, Tawny is the place to be. Combining practical designs with a select lifestyle, your home will truly be a place like no other.





A BOUTIQUE COMMUNITY

# CAIRO'S MOST THRIVING LOCALE

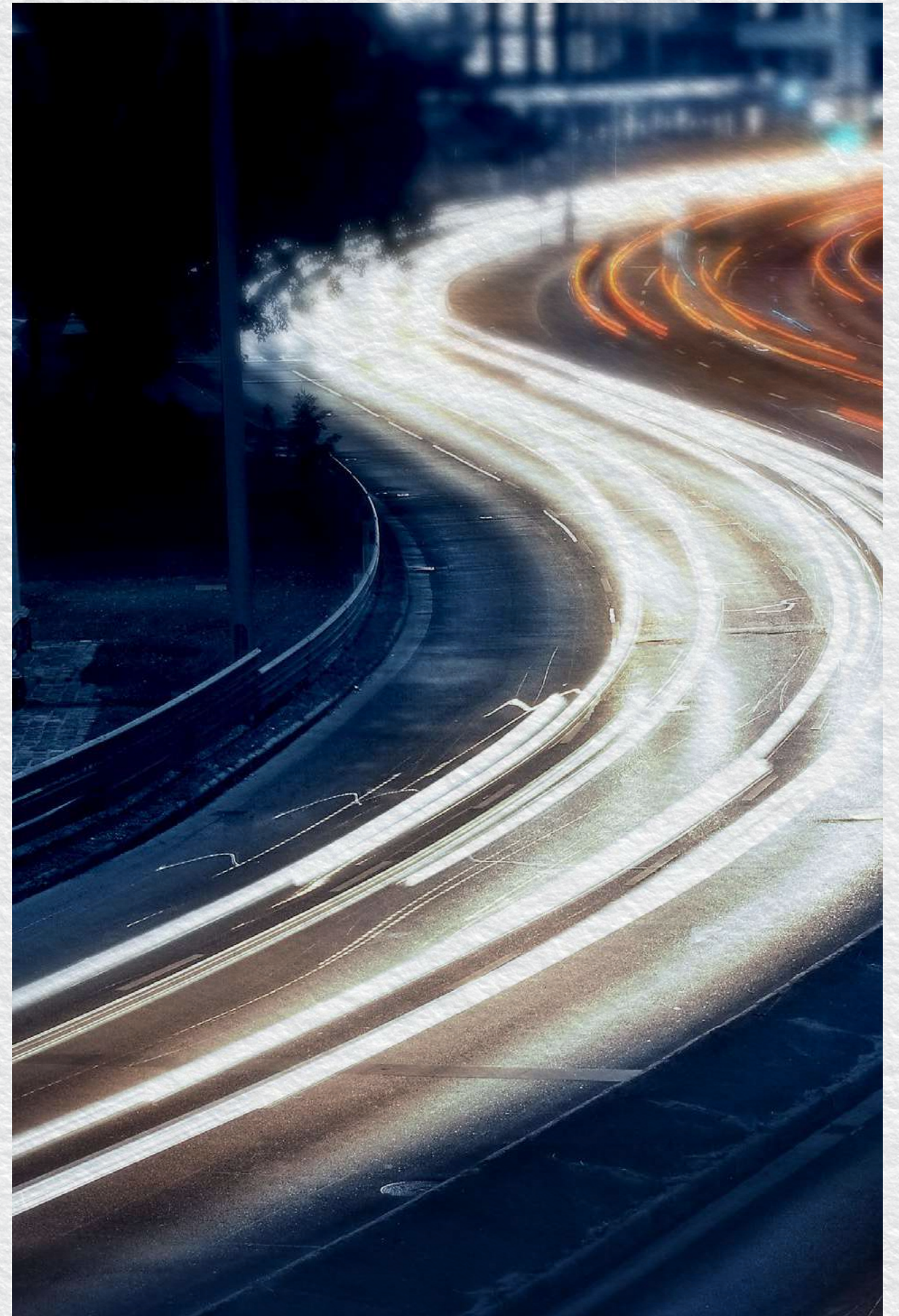




A BOUTIQUE COMMUNITY

## WELCOME TO CAIRO'S MOST PROMINENT ADDRESS

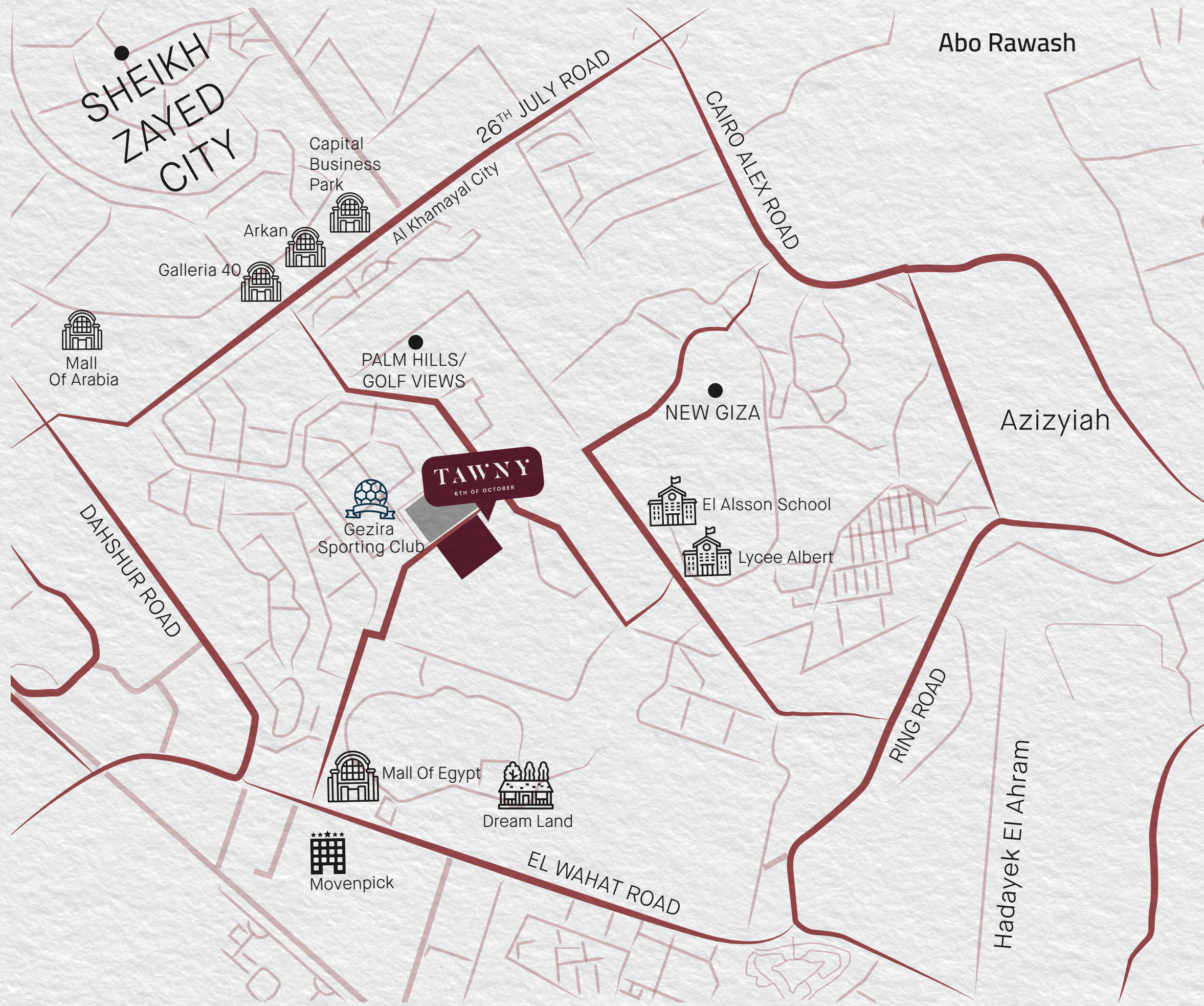
Located in West Cairo's most thriving locale, Tawny is the ideal place to embrace the modern and practical lifestyle you've been seeking. The 31 acre gated community is home to a limited collection of meticulously designed homes, all of which are perfectly integrated with lush green spaces. Tawny is set in a strategic and private location immediately overlooking the Gezira Sporting Club, and within proximity of 6th of October city's most prominent shopping centres, business districts, schools and universities. This Boutique community is easily accessible from 26th of July Corridor, Cairo-Alexandria Desert Road, and the Wahat Road making it minutes away from everywhere.





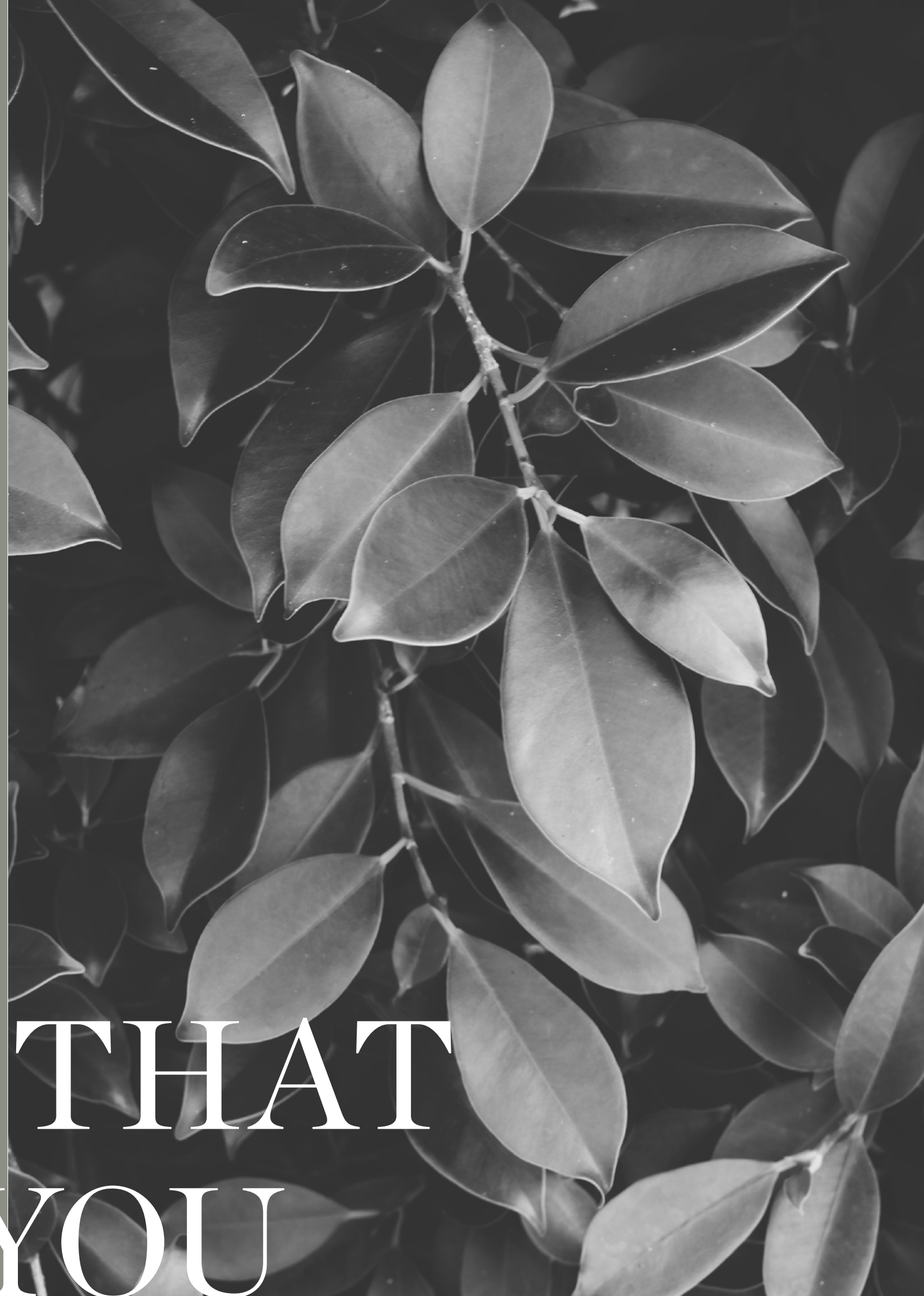
## Location Map

- 3 Minutes from Mall of Egypt
- 3 Minutes from El Alsson School
- 15 Minutes from Dandy Mall
- 25 Minutes from The Great Pyramids





A REFINED  
LIFESTYLE THAT  
REFLECTS YOU





A BOUTIQUE COMMUNITY

## YOUR OWN PERSONAL HAVEN

For those seeking their own personal haven, Tawny promises just that. True to Hyde Park Development's customer-centric strategy, and its promise to develop homes that reflect their homeowners', your home at Tawny is designed to offer you the unique yet chic lifestyle you seek.





A BOUTIQUE COMMUNITY

# UNIQUE LIVING IN WEST CAIRO







A BOUTIQUE COMMUNITY

## AN EXQUISITE LIVING EXPERIENCE

Tawny offers a melodious blend between the cosiness of a small town and the opulence of a modern-day urban city in a novel community that brings family, friends and neighbours together. The development exhibits a wealth of soulful vibrancy, inspiring wellbeing and setting new standards for a contemporary, refined lifestyle.



A BOUTIQUE COMMUNITY

# AVANT-GARDE ARCHITECTURE





A BOUTIQUE COMMUNITY

## AN ARCHITECTURAL CANVAS

Tawny stands as a captivating canvas painted with a soothing colour palette inspired by the serenity of nature. The avant-garde style of Tawny's homes and community spaces represent Hyde Park Development's constant commitment to excellence in both architecture and design. With façades that are sleek and contemporary in style, and meticulously designed spacious interiors, your home at Tawny will offer you a serene living experiences.





MASTERPLAN

MORE THAN  
JUST A  
MASTERPLAN





A BOUTIQUE COMMUNITY

## THE MASTERPLAN

Planned and designed as a masterwork of urban planning and state-of-the-art comforts, Tawny represents its own character and vibrancy while maintaining Hyde Park Development's flagship theme and signature quality. This dynamic community seamlessly blends with the surrounding nature and infuses more colour and life to the West Cairo neighbourhood.

















FLOORPLANS

FLOORPLANS





RENDER





RENDER





FLOORPLANS

Standalone Villa I

Total area	446 m <sup>2</sup>
Total built up area	350 m <sup>2</sup>

Ground floor	154 m <sup>2</sup>
First floor	158 m <sup>2</sup>
Penthouse	38 m <sup>2</sup>
Roof terrace	96 m <sup>2</sup>



Ground Floor



First Floor



Penthouse



# Standalone Villa II





RENDER





RENDER





INTERIOR





FLOORPLANS

Standalone Villa II

Total area	367 m <sup>2</sup>
Total built up area	288 m <sup>2</sup>

Ground floor	127 m <sup>2</sup>
First floor	129.5 m <sup>2</sup>
Penthouse	31.5 m <sup>2</sup>
Roof terrace	79 m <sup>2</sup>



Ground Floor



First Floor



Penthouse

**Disclaimer**  
All renders and visual materials are for illustrative purposes only. Actual areas may vary from the standard figures. All dimensions are measured to structural elements. HPD reserves the right to make minor modifications without notice.



## Twin Villa





RENDER





RENDER





INTERIOR





FLOORPLANS

Twin Villa I

Total area	351 m <sup>2</sup>
Total built up area	278 m <sup>2</sup>

Ground floor	120 m <sup>2</sup>
First floor	128 m <sup>2</sup>
Penthouse	30 m <sup>2</sup>
Roof terrace	73 m <sup>2</sup>



Ground Floor



First Floor



Penthouse



RENDER





RENDER





FLOORPLANS

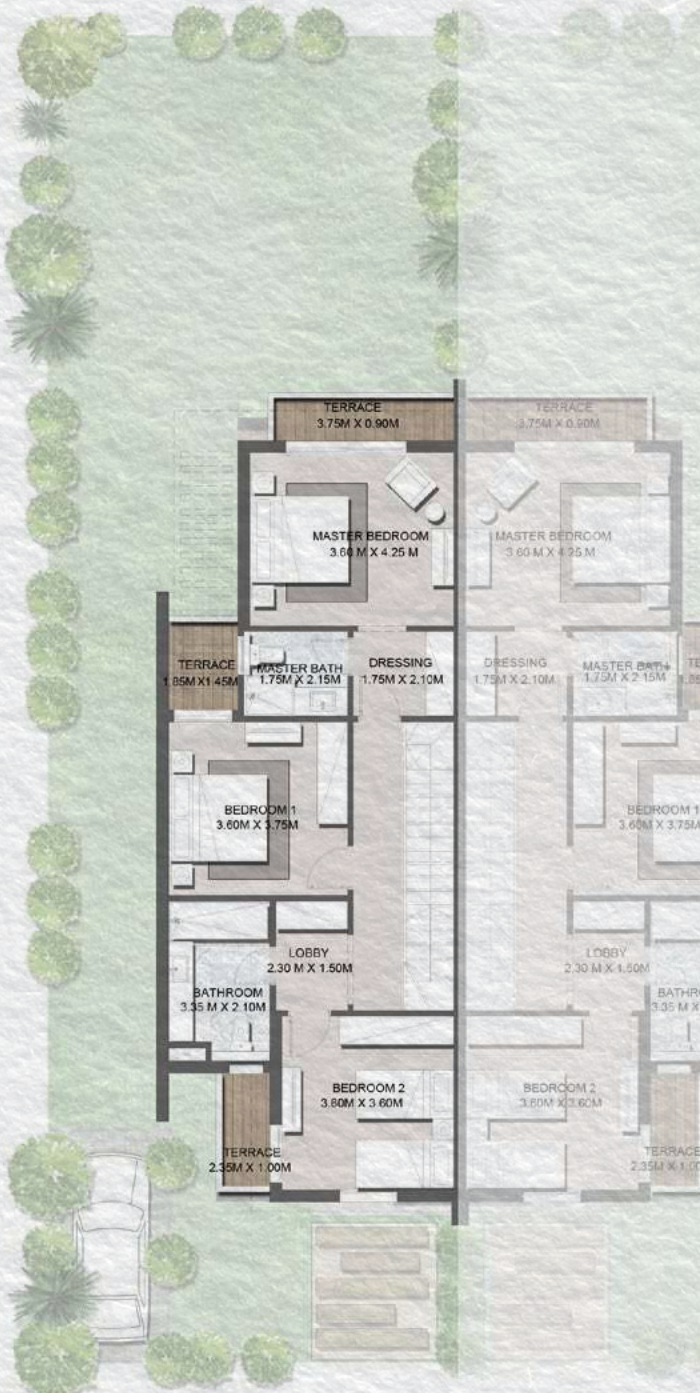
Twin Villa II

Total area	261 m <sup>2</sup>
Total built up area	208 m <sup>2</sup>

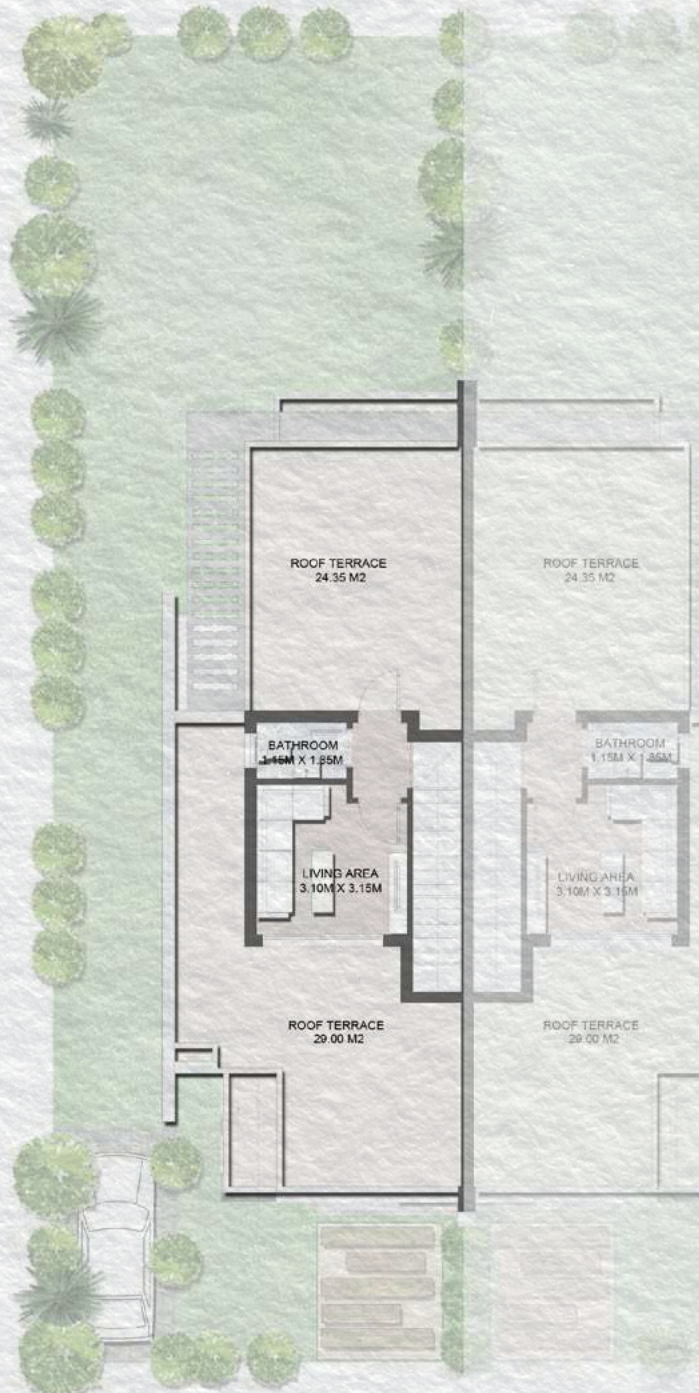
Ground floor	90 m <sup>2</sup>
First floor	95.5 m <sup>2</sup>
Penthouse	22.5 m <sup>2</sup>
Roof terrace	53 m <sup>2</sup>



Ground Floor



First Floor

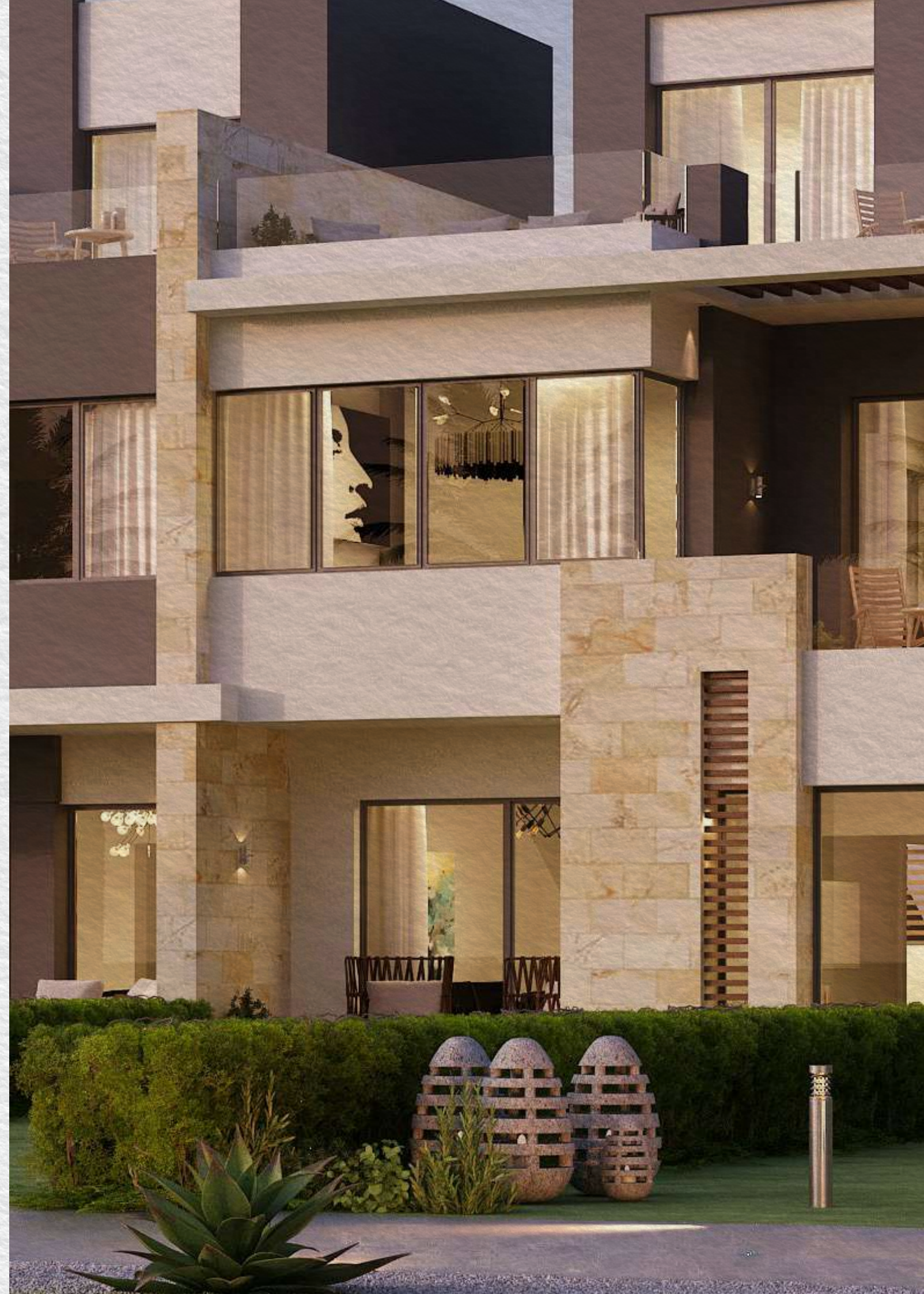


Penthouse

**Disclaimer**  
All renders and visual materials are for illustrative purposes only. Actual areas may vary from the standard figures. All dimensions are measured to structural elements. HPD reserves the right to make minor modifications without notice.



# Townhouse





RENDER





## INTERIOR





FLOORPLANS

Townhouse - Corner I

Total area	333 m <sup>2</sup>
Total built up area	260 m <sup>2</sup>

Ground floor	115.5 m <sup>2</sup>
First floor	115.5 m <sup>2</sup>
Penthouse	29 m <sup>2</sup>
Roof terrace	73 m <sup>2</sup>



Ground Floor



First Floor



Penthouse



FLOORPLANS

Townhouse - Middle I

Total area	320 m <sup>2</sup>
Total built up area	246 m <sup>2</sup>

Ground floor	107 m <sup>2</sup>
First floor	113 m <sup>2</sup>
Penthouse	26 m <sup>2</sup>
Roof terrace	74 m <sup>2</sup>



Ground Floor



First Floor



Penthouse



RENDER





RENDER





FLOORPLANS

Townhouse - Corner II

Total area	261 m <sup>2</sup>
Total built up area	208 m <sup>2</sup>

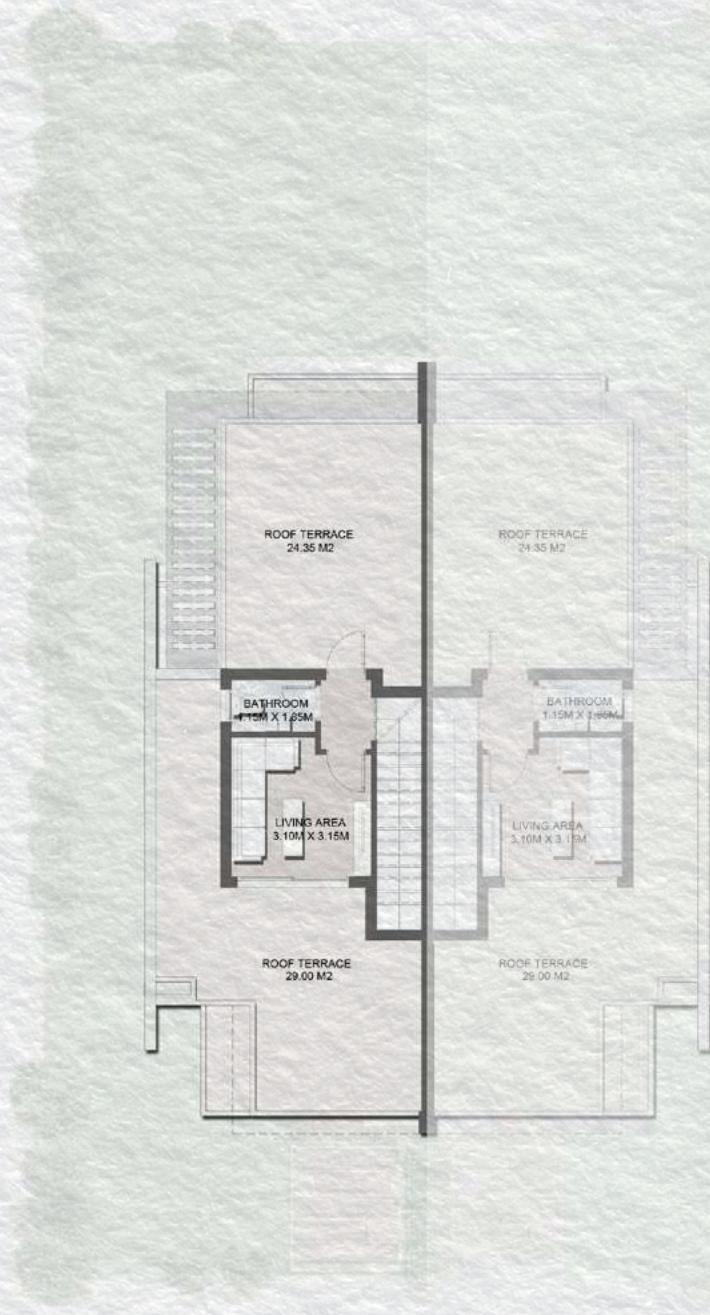
Ground floor	90 m <sup>2</sup>
First floor	95.5 m <sup>2</sup>
Penthouse	22.5 m <sup>2</sup>
Roof terrace	53 m <sup>2</sup>



Ground Floor



First Floor



Penthouse

**Disclaimer**  
All renders and visual materials are for illustrative purposes only. Actual areas may vary from the standard figures. All dimensions are measured to structural elements. HPD reserves the right to make minor modifications without notice.



FLOORPLANS

Total area	261 m²
Total built up area	208 m²

Ground floor	90 m²
First floor	95.5 m²
Penthouse	22.5 m²
Roof terrace	53 m²

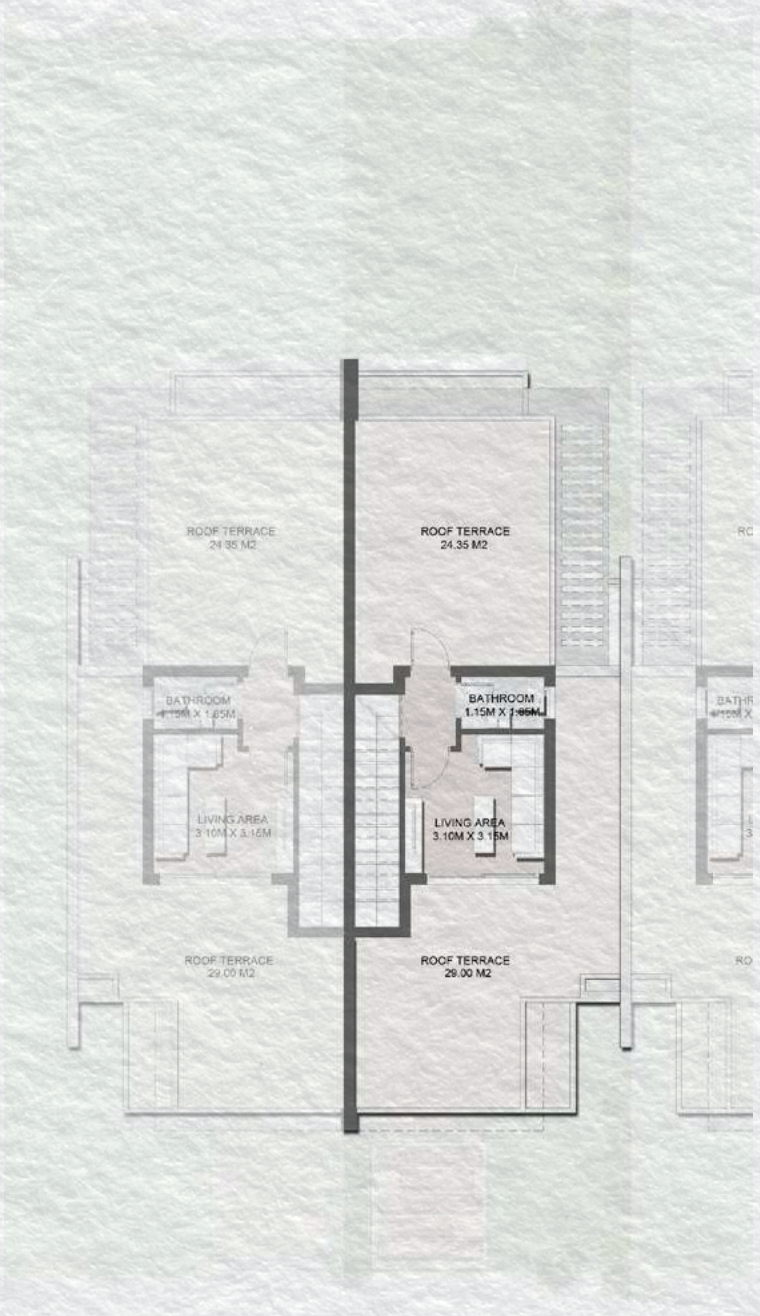
Townhouse - Middle II



Ground Floor



First Floor



Penthouse

**Disclaimer**  
All renders and visual materials are for illustrative purposes only. Actual areas may vary from the standard figures. All dimensions are measured to structural elements. HPD reserves the right to make minor modifications without notice.



## Quad Villa





RENDER





RENDER





## INTERIOR





FLOORPLANS

Quad Villa

Total area	308 m²	Ground floor	106.5 m²
Total built up area	240 m²	First floor	108.5 m²
		Penthouse	25 m²
		Roof terrace	68 m²



Ground Floor



First Floor



Penthouse



TAWNY

6TH OF OCTOBER

— 16696 —

[www.hydepark-newcairo.com](http://www.hydepark-newcairo.com)