

RES - 7

MARINA DISTRICT
LUSAIL, QATAR



About Us

Est. in 1992; We believed there was a better way for companies to deliver successful construction and engineering projects. At the time, construction was one of the few industries that still relied on paper. Each project generated a massive amount of it correspondence and documents that needed to be distributed to dispersed teams quickly and in a controlled manner.



Contact Us

Website

www.alwefaqeng.com

Address

Manarat Lusail Tower, 10th Floor,
Office number 1001 & 1003, Lusail
City, Qatar

Telephone

+974 4462 6416



WE INSPIRE
YOUR STYLE!

Luxury Residences

Welcome to our premier real estate service, where luxury meets elegance. We take pride in offering an exquisite selection of opulent residences that redefine the meaning of luxurious living. Our expert team of professionals is dedicated to curating a portfolio of stunning properties, meticulously crafted to cater to the most discerning tastes. From breathtaking penthouses with panoramic city views to sprawling estates nestled in idyllic landscapes, we provide an unparalleled experience of refined extravagance. Immerse yourself in the epitome of sophistication and indulge in a lifestyle reserved for the truly extraordinary. Explore our collection of luxury residences and let us guide you to your dream home.



Our Service

We take immense pride in offering fully finished apartments for sale in convenient installments, making owning your ideal home more accessible than ever before. Our thoughtfully designed and meticulously crafted apartments are a testament to our commitment to quality and attention to detail.

Best Deals...



Discover the ultimate real estate deals that are sure to captivate both seasoned investors and first-time buyers alike. At our agency, we pride ourselves on delivering the very best opportunities in the market. Our dedicated team of experts meticulously curates a selection of properties that offer exceptional value, ensuring that you receive the most advantageous deals available. Whether you're seeking a cozy suburban home or a thriving commercial space, we have a range of options that cater to every need and budget. With our extensive network and in-depth market knowledge, we guarantee to provide you with unparalleled access to exclusive listings and negotiate the most favorable terms. Don't miss out on the chance to secure your dream property at an unbeatable price. Trust us to deliver the best deals that the real estate market has to offer.

LOCATION :

RES - 7

MARINA DISTRICT
LUSAIL, QATAR



MARINA - 07



Apartment floor plan:



Key plan:



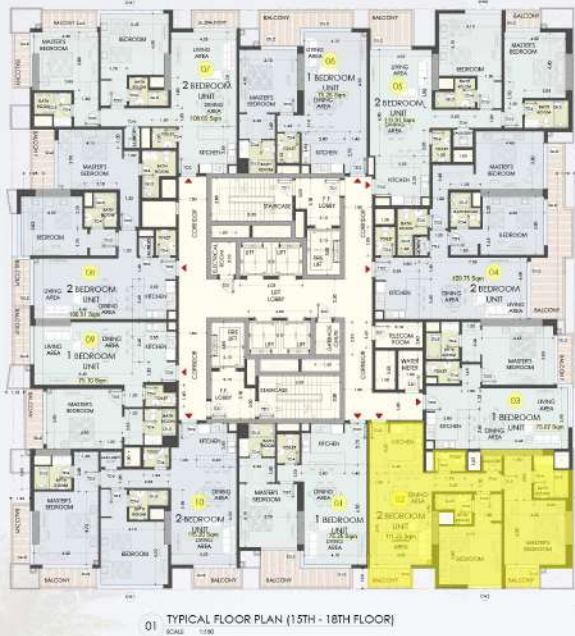
01 TYPICAL FLOOR PLAN (15TH - 18TH FLOOR)
SCALE: 1:100

MARINA - 07 APARTMENT - 01

GROSS AREA = 108.90 sqm (Including Balcony)

MARINA - 07

Key plan:



Apartment floor plan:



MARINA - 07 APARTMENT - 02

GROSS AREA = 149.40 sqm (Including Balcony)

MARINA - 07

Apartment floor plan:



Key plan:



01 TYPICAL FLOOR PLAN (15TH - 18TH FLOOR)
SCALE: 1:500



MARINA - 07 APARTMENT - 03

GROSS AREA = 101.20 sqm (Including Balcony)

MARINA - 07



Apartment floor plan:

Key plan:



01 TYPICAL FLOOR PLAN (15TH - 18TH FLOOR)
SCALE: 1:100



MARINA - 07 APARTMENT - 04

GROSS AREA = 162.65 sqm (Including Balcony)

Apartment floor plan:

MARINA - 07



Key plan:



01 TYPICAL FLOOR PLAN (15TH - 18TH FLOOR)
SCALE: 1:500



MARINA - 07 APARTMENT - 05

GROSS AREA = 152.80 sqm (Including Balcony)

MARINA - 07



Apartment floor plan:

Key plan:



01 TYPICAL FLOOR PLAN (15TH - 18TH FLOOR)
SCALE: 1:100



MARINA - 07 APARTMENT - 06

GROSS AREA = 108.00 sqm (Including Balcony)

MARINA - 07

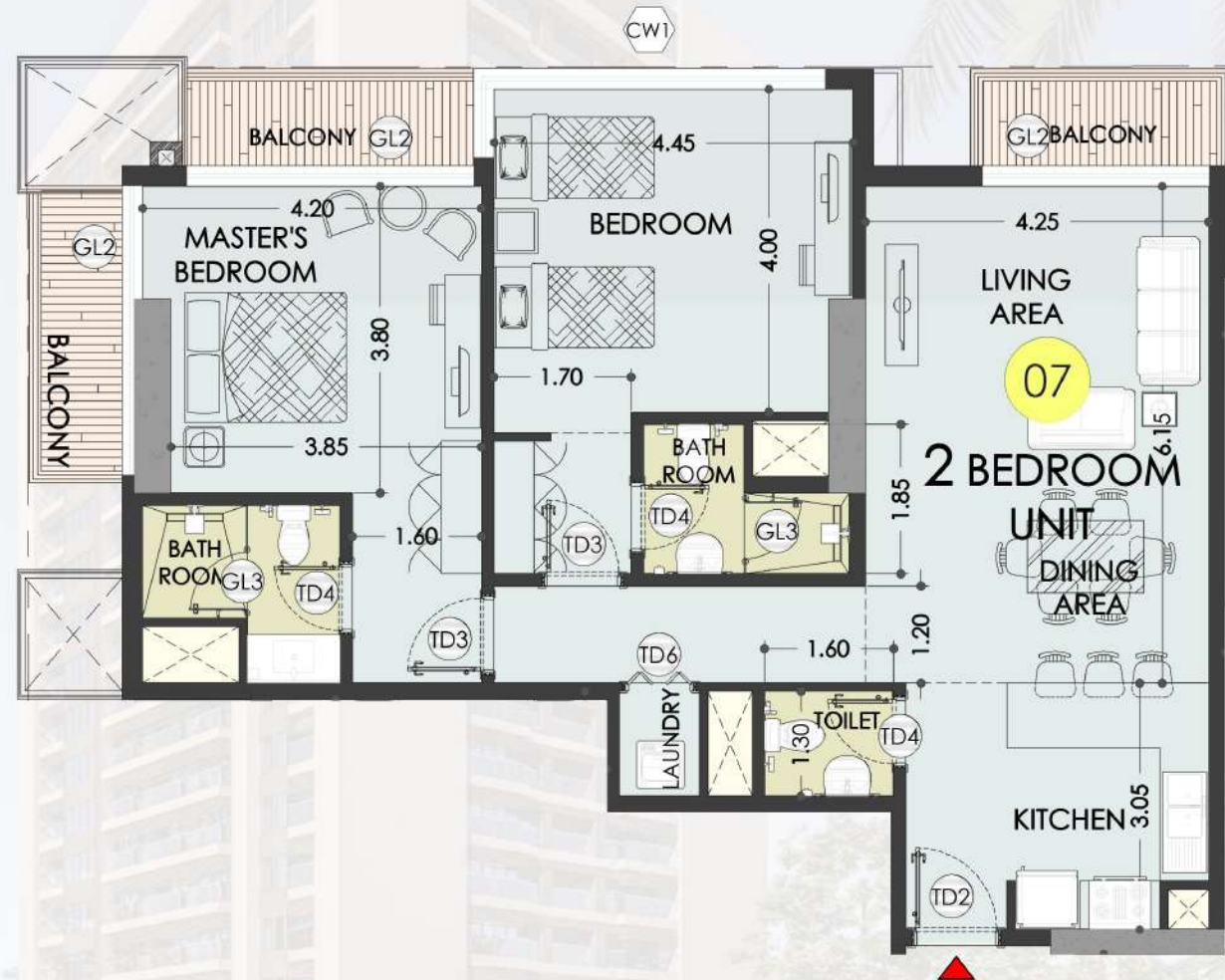
Apartment floor plan:



Key plan:



01 TYPICAL FLOOR PLAN (15TH - 18TH FLOOR)
SCALE: 1:500



MARINA - 07 APARTMENT - 07

GROSS AREA = 152.25 sqm (Including Balcony)

MARINA - 07

Apartment floor plan:



Key plan:



01 TYPICAL FLOOR PLAN (15TH - 18TH FLOOR)
SCALE: 1:100



MARINA - 07 APARTMENT - 08

GROSS AREA = 146.80 sqm (Including Balcony)

MARINA - 07

Key plan:



Apartment floor plan:



MARINA - 07 APARTMENT - 09

GROSS AREA = 107.91 sqm (Including Balcony)

MARINA - 07



Key plan:



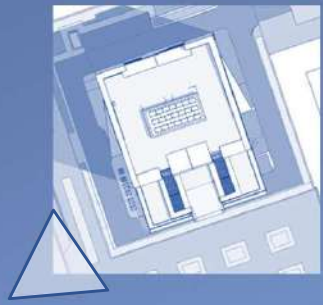
01 TYPICAL FLOOR PLAN (15TH - 18TH FLOOR)
SCALE: 1:500

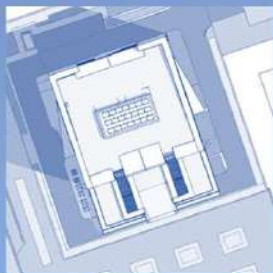
Apartment floor plan:

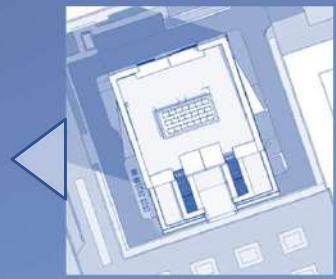


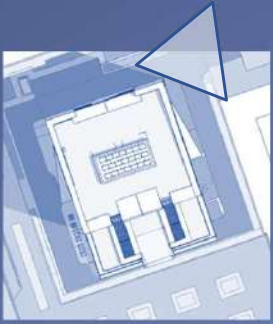
MARINA - 07 APARTMENT - 10

GROSS AREA = 163.58 sqm (Including Balcony)















SERVICES

GROUND FLOOR

- Lobby
- Core
- Rentable Shop
- Building Services

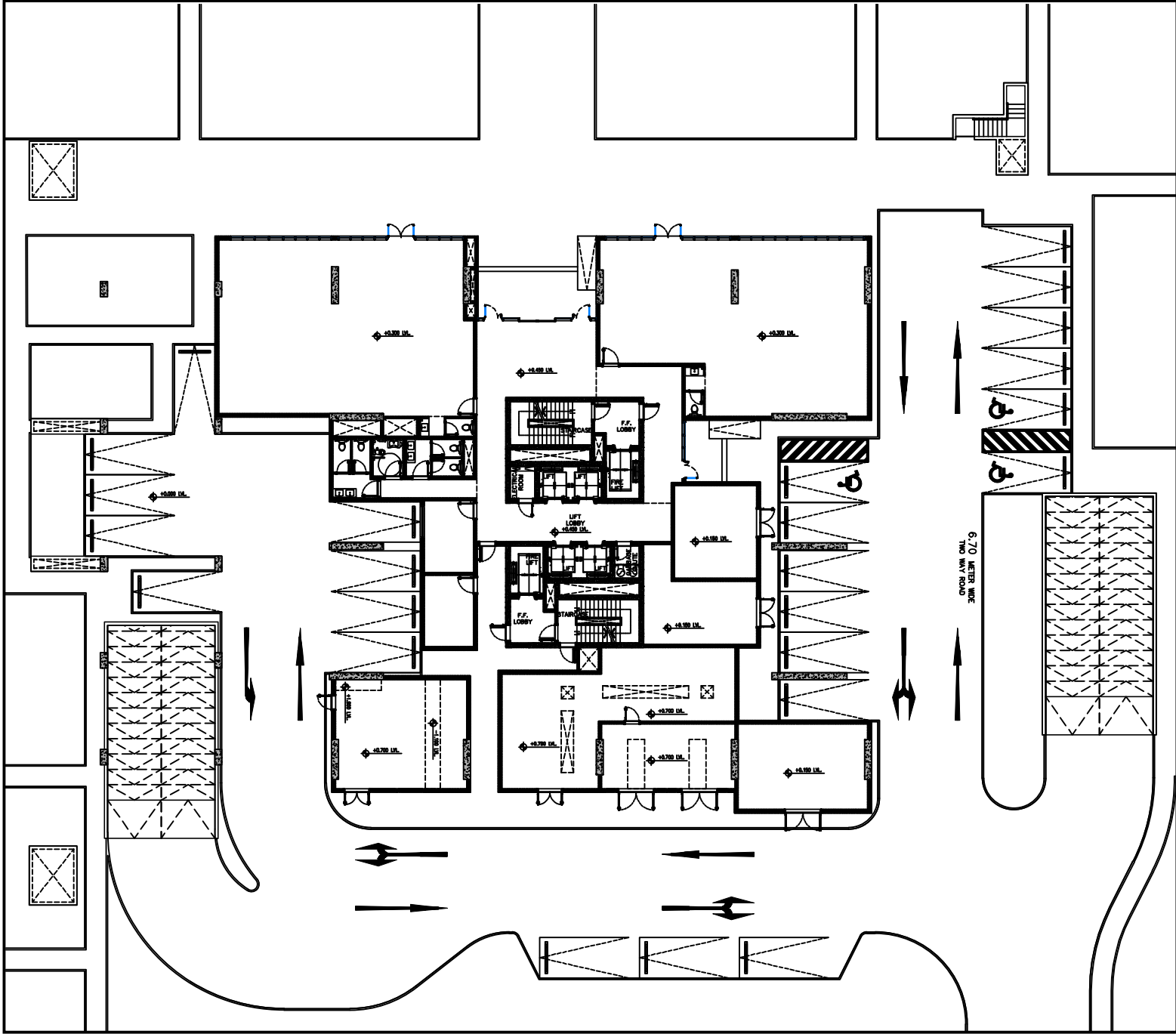
FACILITY FLOOR

- Pool
- Gym
- Kids Area
- Events Hall / Multipurpose Room

TYPICAL FLOOR

- Kitchen
- Reception
- Guest Bathroom
- Bedroom
- Bathroom
- Master Bedroom
- Master Bathroom
- Terraces

GROUND FLOOR





Main Entrance

GROUND FLOOR



Lobby

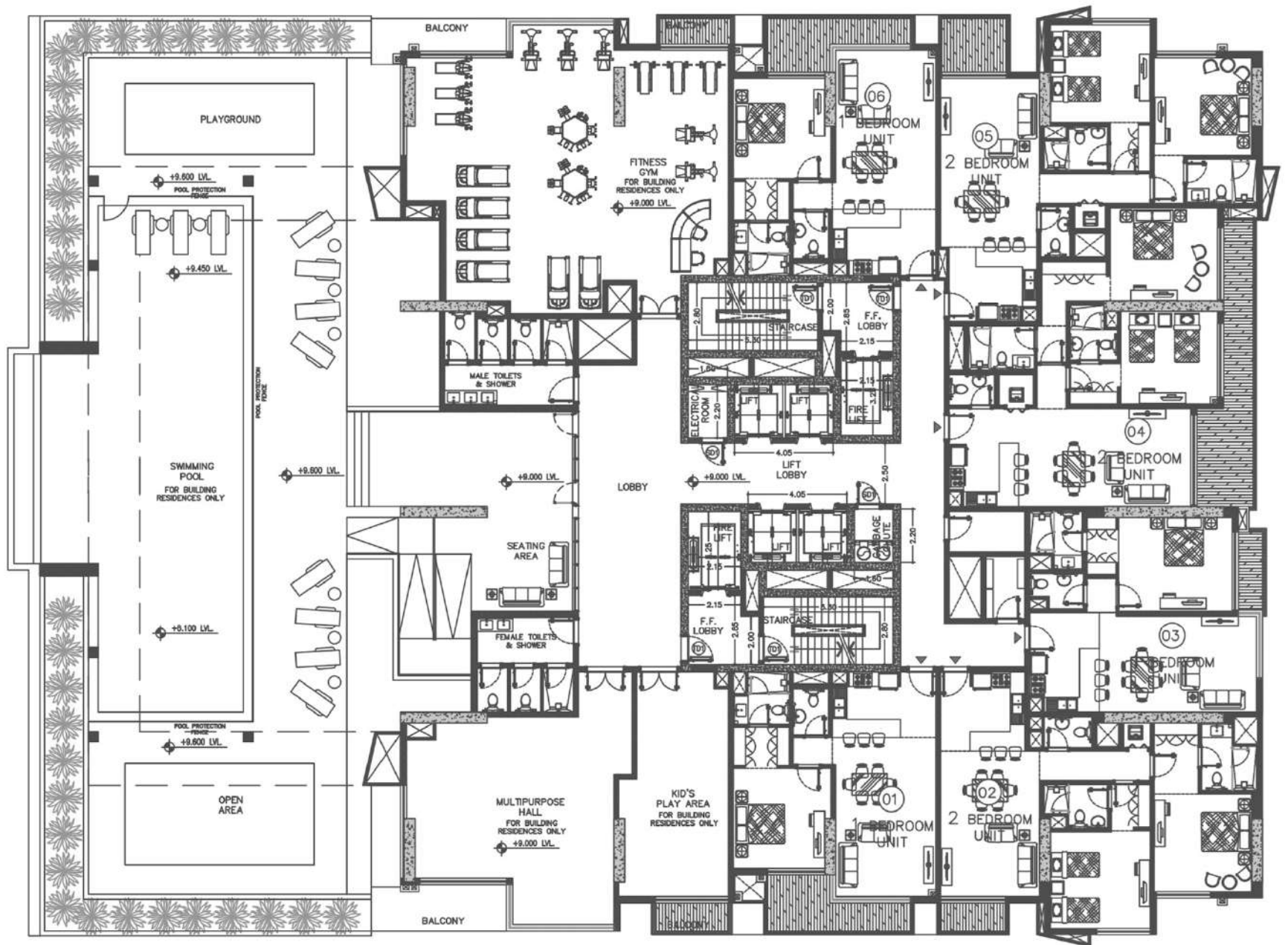
GROUND FLOOR



Corridor

GROUND FLOOR

FACILITY FLOOR





Pool Seating Area

FACILITY FLOOR



Gym

FACILITY FLOOR



Gym

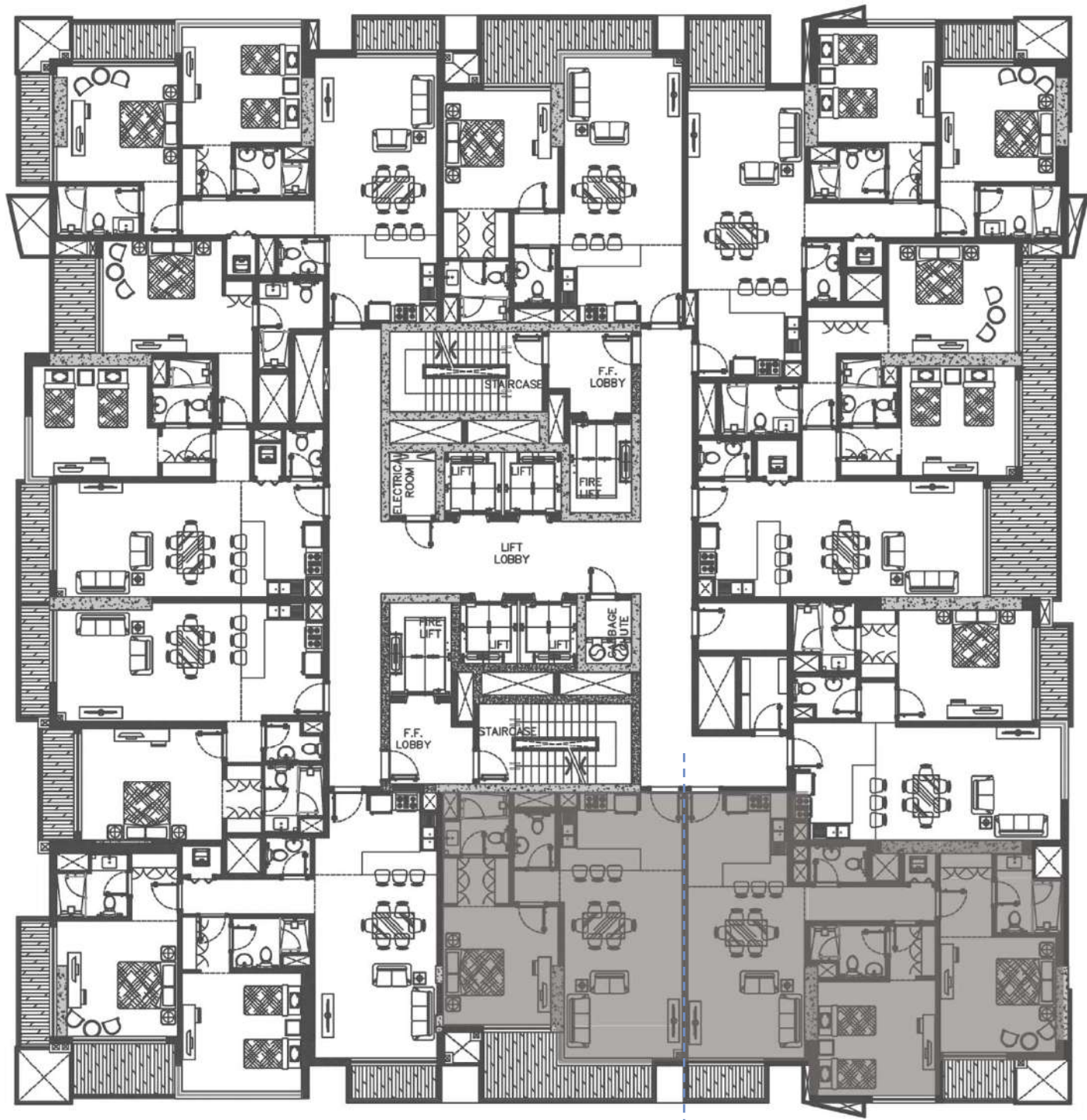
FACILITY FLOOR



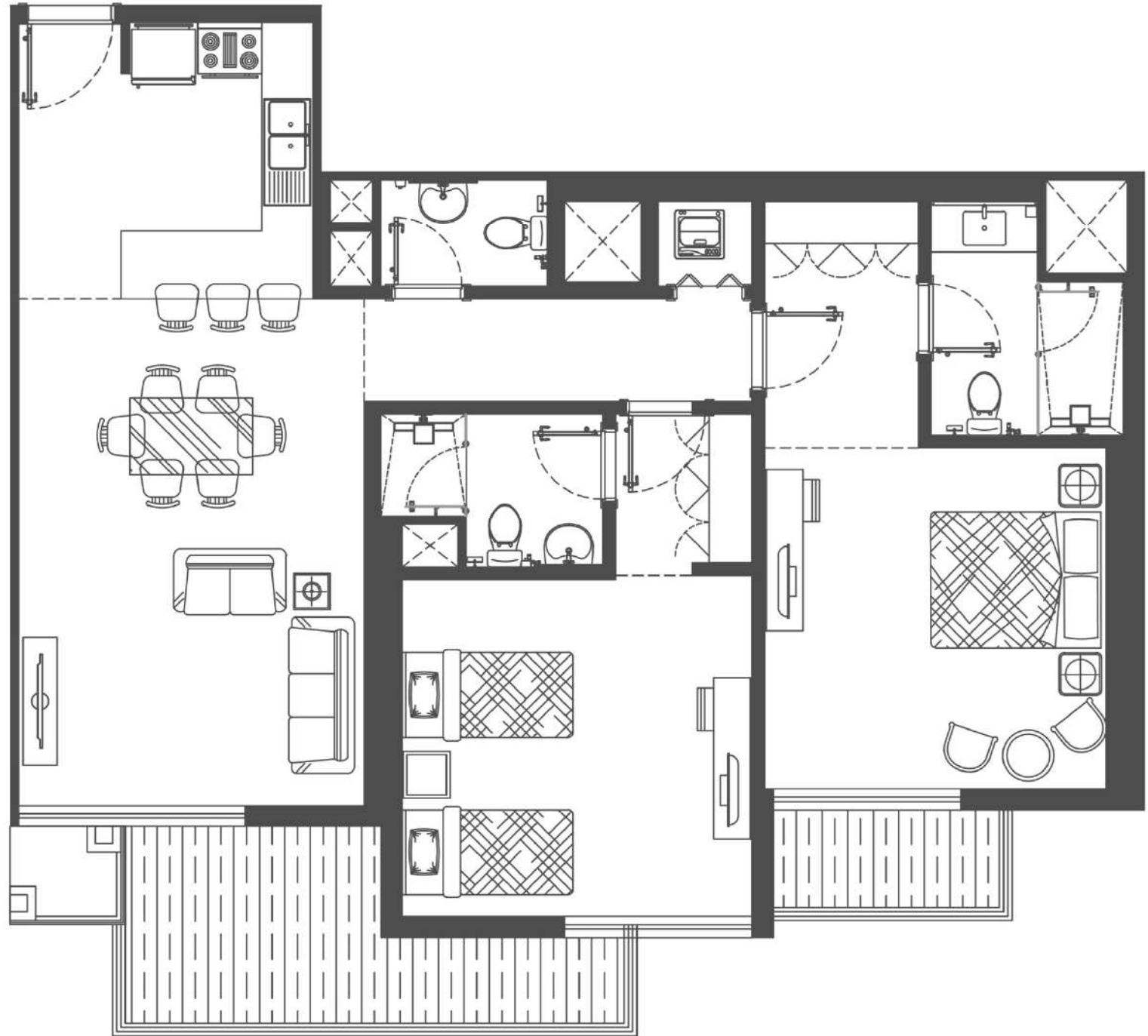
Kids Area

FACILITY FLOOR

TYPICAL FLOOR

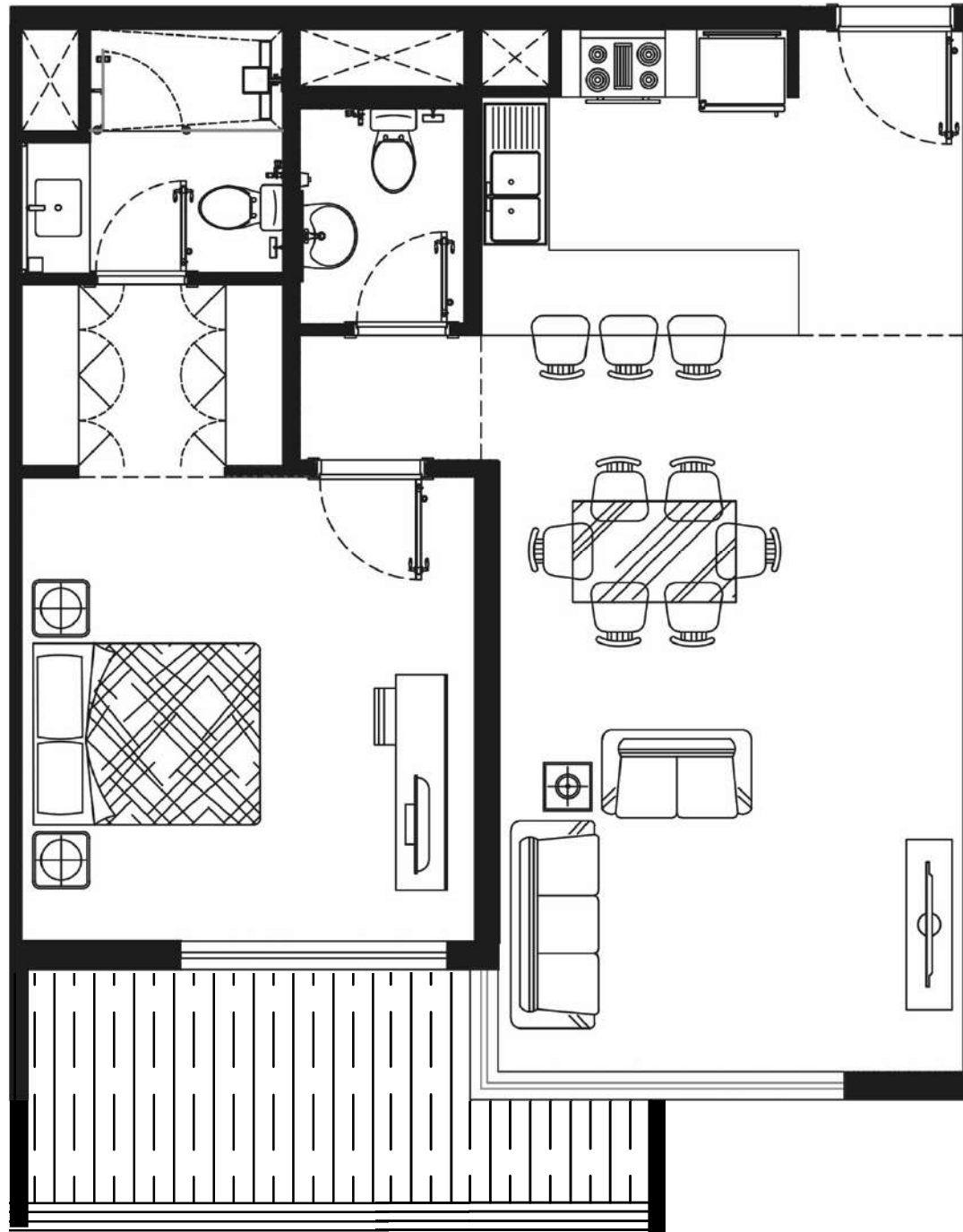


2-BR UNIT PLAN



***Please note that the terraces areas change according to exterior elevation design*

1-BR UNIT PLAN



***Please note that the terraces areas change according to exterior elevation design*

UNIT MATERIALS





Entryway

TYPICAL FLOOR



Reception

TYPICAL FLOOR



Reception

TYPICAL FLOOR



Guest Toilet

TYPICAL FLOOR



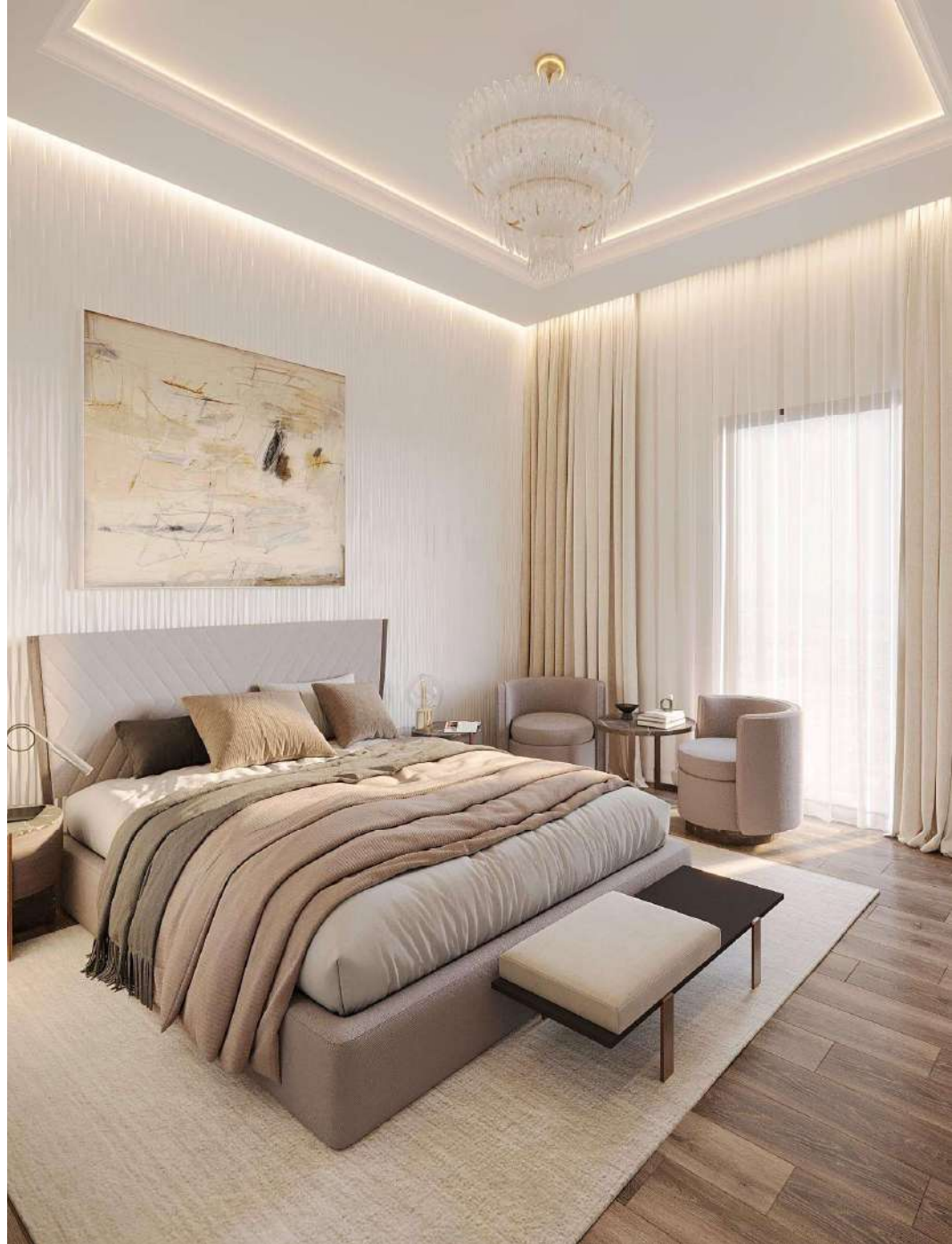
Terrace

TYPICAL FLOOR



Terrace

TYPICAL FLOOR



Master Bedroom



TYPICAL FLOOR



Master Bathroom

TYPICAL FLOOR



Master Bedroom Terrace

TYPICAL FLOOR



Bedroom 2

TYPICAL FLOOR



OTHER VIEWS



OTHER VIEWS



OTHER VIEWS



OTHER VIEWS



OTHER VIEWS



OTHER VIEWS



OTHER VIEWS



OTHER VIEWS



OTHER VIEWS



OTHER VIEWS



OTHER VIEWS



OTHER VIEWS



OTHER VIEWS



OTHER VIEWS



OTHER VIEWS



OTHER VIEWS



THANK YOU