

ATLANTIS

HURGHADA - RED SEA

Developed By
CASTELLO
Town

Al Mouhamadi Hoaidak Square
In Front Of The Old VIC Beach
Hurghada

15423
castelloeg.com



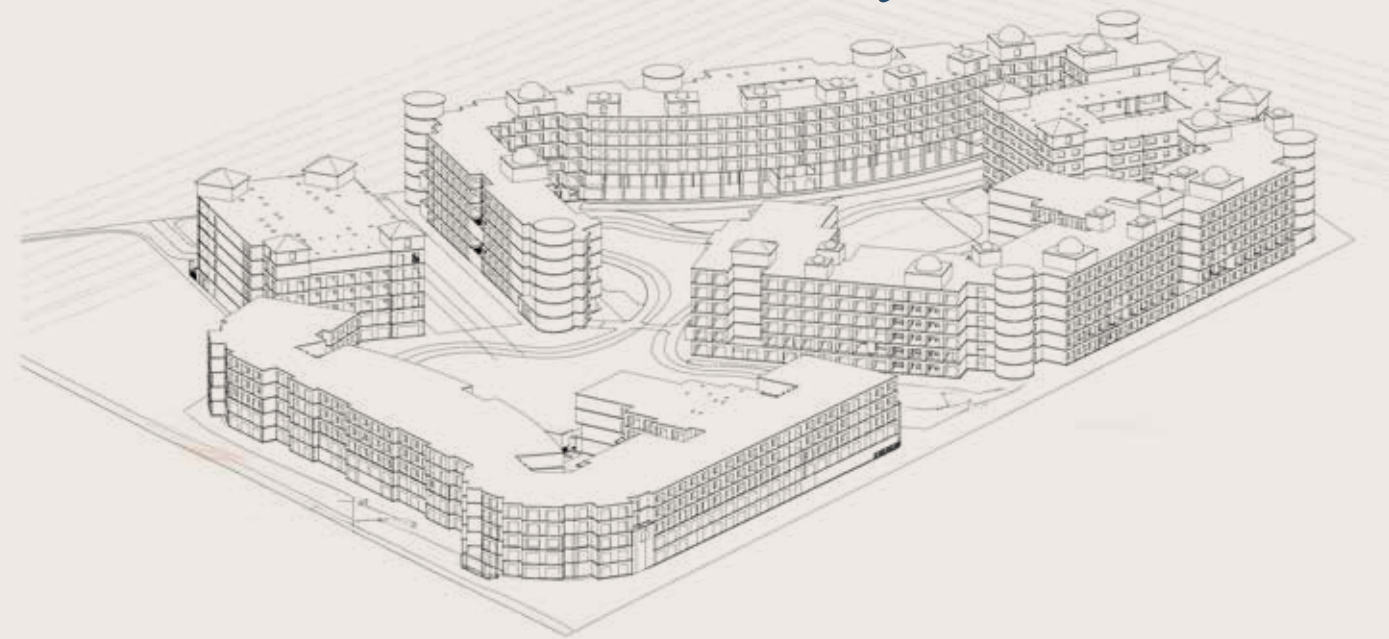


Castello Development, a prominent figure in real estate and construction, is known for its commitment to excellence and innovation. Our journey begins with a vision to bring fresh ideas and a modern approach to development, setting a new standard for excellence. With a dynamic team at its core, Castello has Launched iconic projects such as Storia Del Mare and Atlantis.

ATLANTIS

HURGHADA - RED SEA

Luxurious Living Awaits



Atlantis stands as a testament to Castello's commitment to crafting exceptional living spaces in the heart of Hurghada.

Nestled in downtown Hurghada, Atlantis offers a unique blend of urban convenience and luxurious living, Atlantis is on 41.500 m² with 40% foot print and 60% Landscape.

Location Map

Prime Location

Atlantis enjoys a coveted location just **5 minutes away** from Hurghada International Airport, providing unparalleled convenience for travelers and residents alike. Its central position in downtown Hurghada ensures easy access to key landmarks, attractions, and amenities, **3 minutes away** from the vibrant Mamsha, known for its bustling cafes, shops, and entertainment options. Additionally, Sheraton Street, renowned for its upscale dining and nightlife scene, is also within **a 3-minute reach**, offering residents a plenty of dining and leisure choices.






Architectural and Design Vision

Inspired by the legendary allure of the mythical city, Atlantis incorporates castle-like features such as towers and fortified edges into its minimalist design, creating a striking visual narrative that captures the essence of modern royalty. The complex is elegantly laid out with ground floors and four typical floors, where each structure showcases a sophisticated simplicity enriched with subtle nods to historic fortifications.

DISCLAIMER

1.This façade is subjected to minor amendments without prior notice. 2. Specification, materials and/or colors might be changed based on the final design and material availability, actual unit finishings for front windows, porches, FRONT VIEW terraces, loggia and exterior trim may vary by elevation styles and floor level. 3. This façade is for illustrative purposes

A woman with long dark hair, wearing a white long-sleeved shirt, is seen from the back, looking out at a vast blue ocean under a clear sky. The text "Every Reason to Find Happiness" is overlaid in a white cursive font on the right side of the image.

Every Reason to Find Happiness

Master Plan

- Hotel .
- Mixed Use Building .
- Building A .
- Building B .
- Building C .

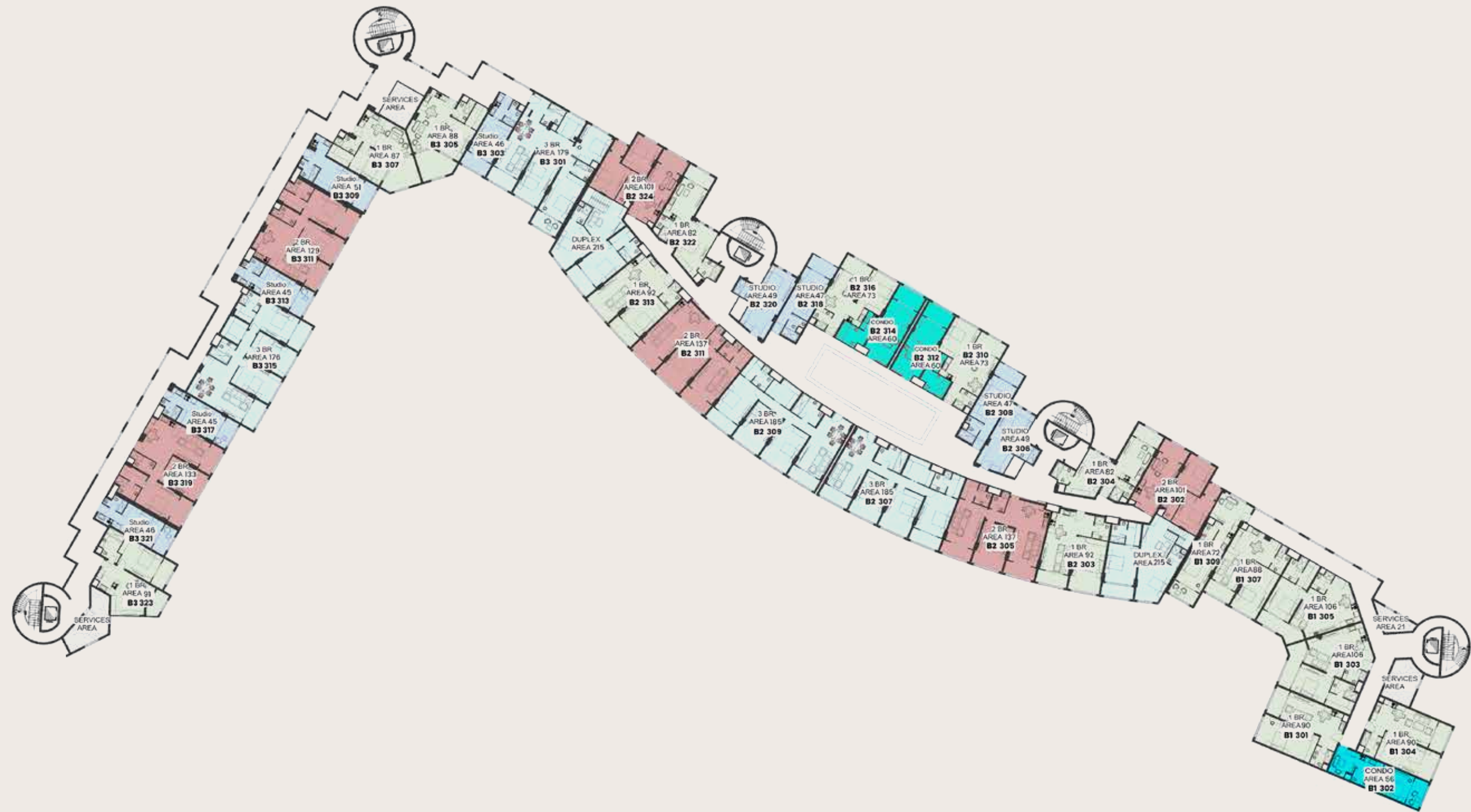
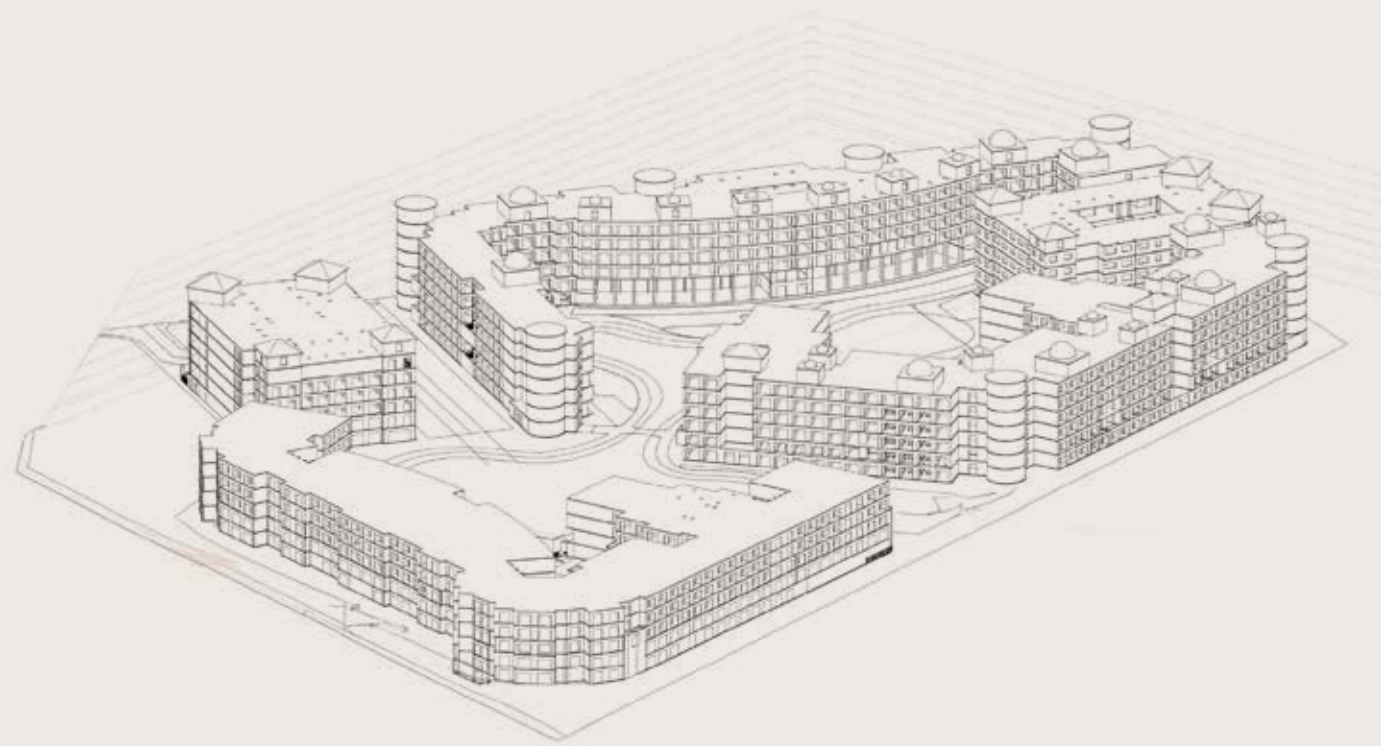


*Building
B*

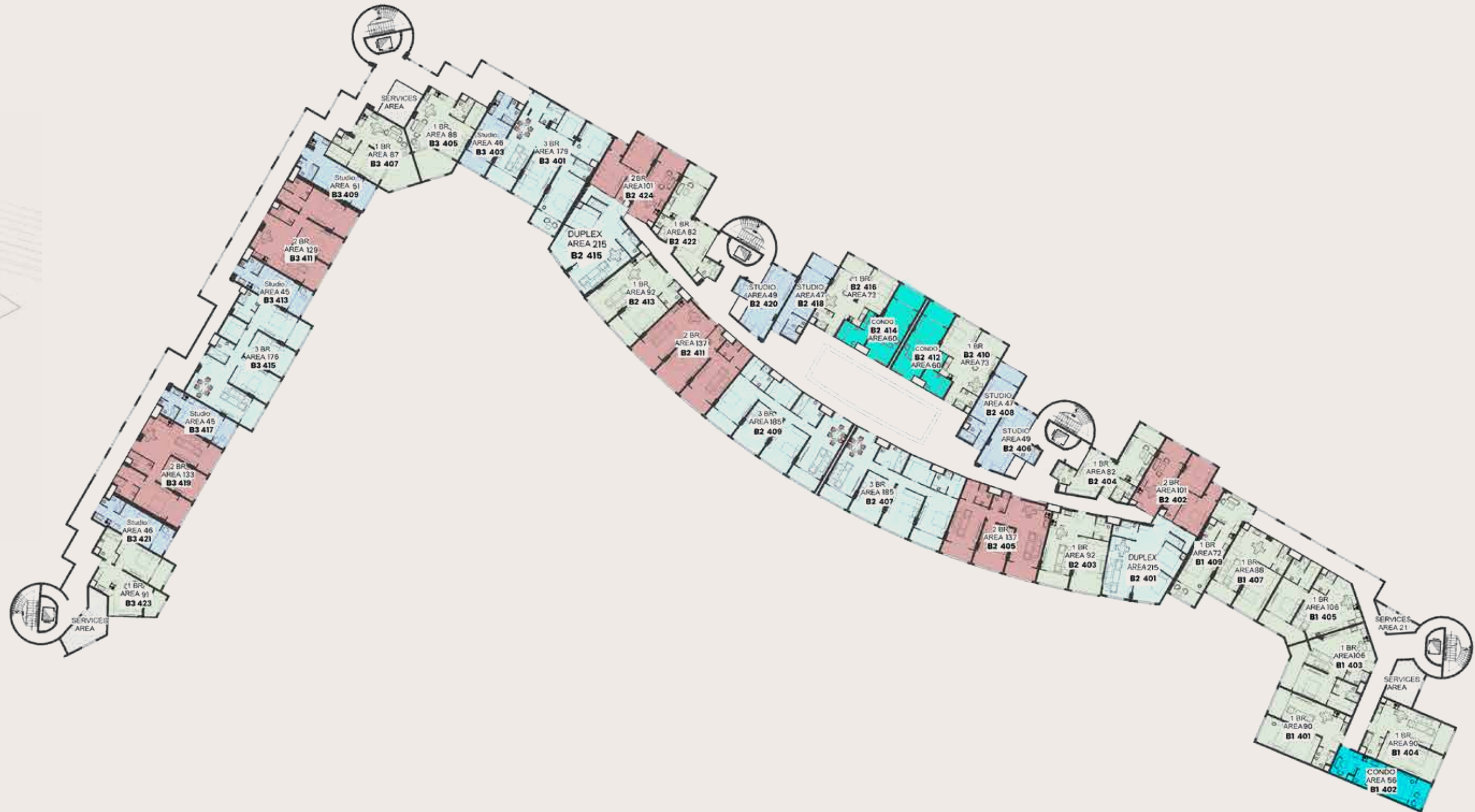
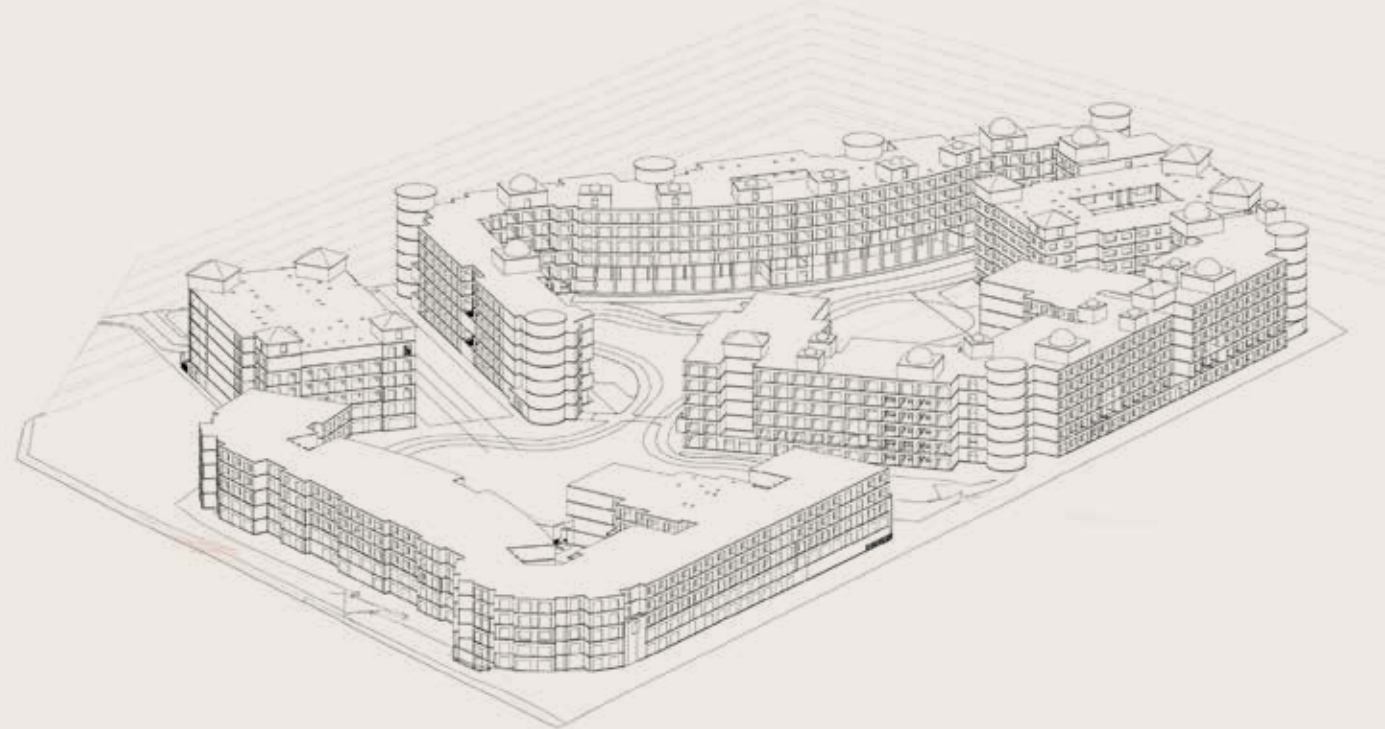


DISCLAIMER

1.This façade is subjected to minor amendments without prior notice. 2. Specification, materials and/or colors might be changed based on the final design and material availability, actual unit finishings for front windows, porches, FRONT VIEW terraces, loggia and exterior trim may vary by elevation styles and floor level. 3. This façade is for illustrative purposes



Building B
Third Floor



Building B
Fourth Floor

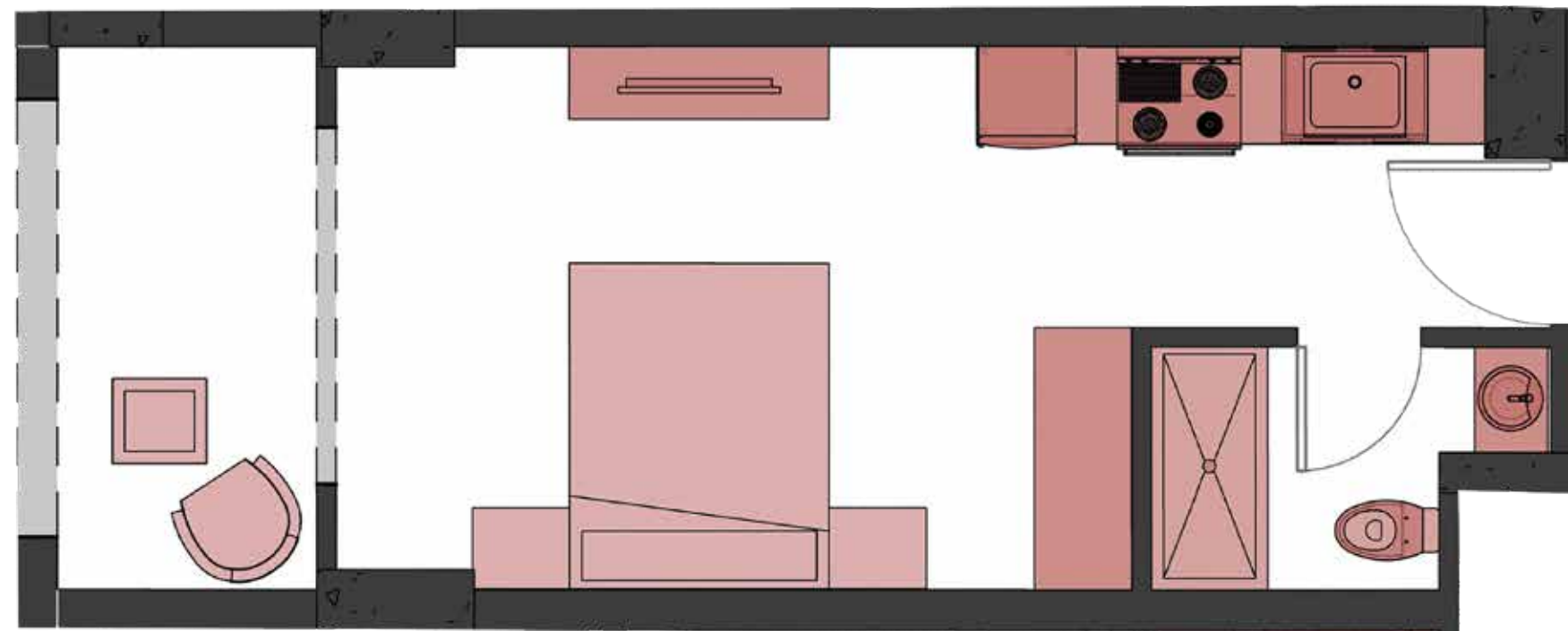


Building B
UNIT TYPES

Building B

STUDIO

Discover our stylish studio units, ranging from 36 m² to 68 m², perfect for singles and young professionals. Each unit is designed to maximize space with a modern, open-plan layout. Enjoy a fully equipped kitchenette, comfortable living area, and ample storage.



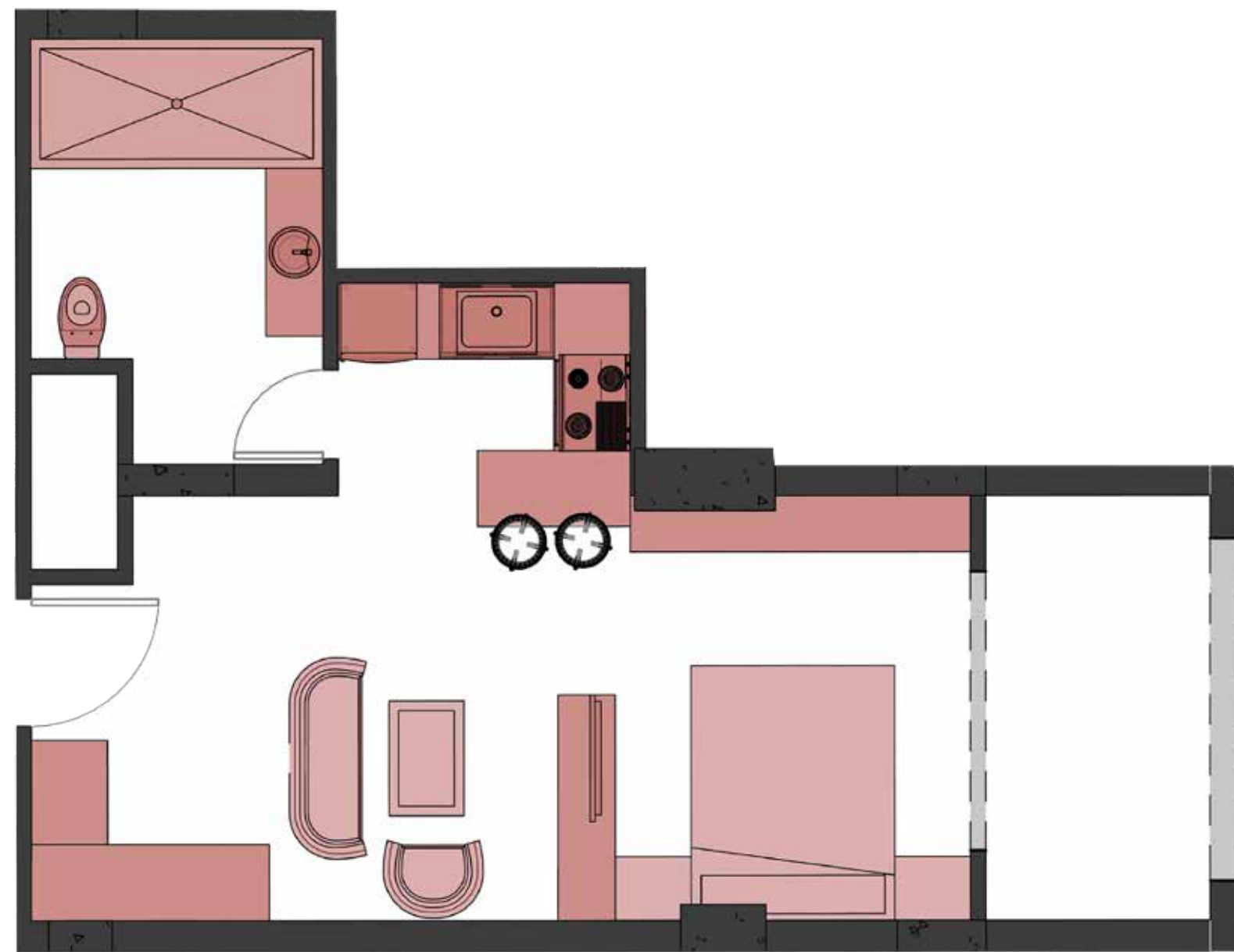
DISCLAIMER

1. All room dimensions are measured to structural elements and exclude wall finishes and construction tolerances. 2. All dimensions have been provided by our consultant architects. 3. All materials, dimensions and drawings are approximate, information subject to change without notice. 4. Actual internal spaces areas may vary from the stated area in the drawings. Drawings not to scale. 5. The developers reserves the right to make technical revisions. 6. Actual front windows, porches, terraces, loggia and exterior trim detail may vary by elevation styles and floor level.

Building B

CONDO

Explore our elegant condo units, ranging from 49 m² to 60 m². Perfect for singles or couples, these units offer a spacious bedroom, a modern kitchen, and a cozy living area. Designed with comfort and style in mind, each unit features high-quality finishes and ample storage.



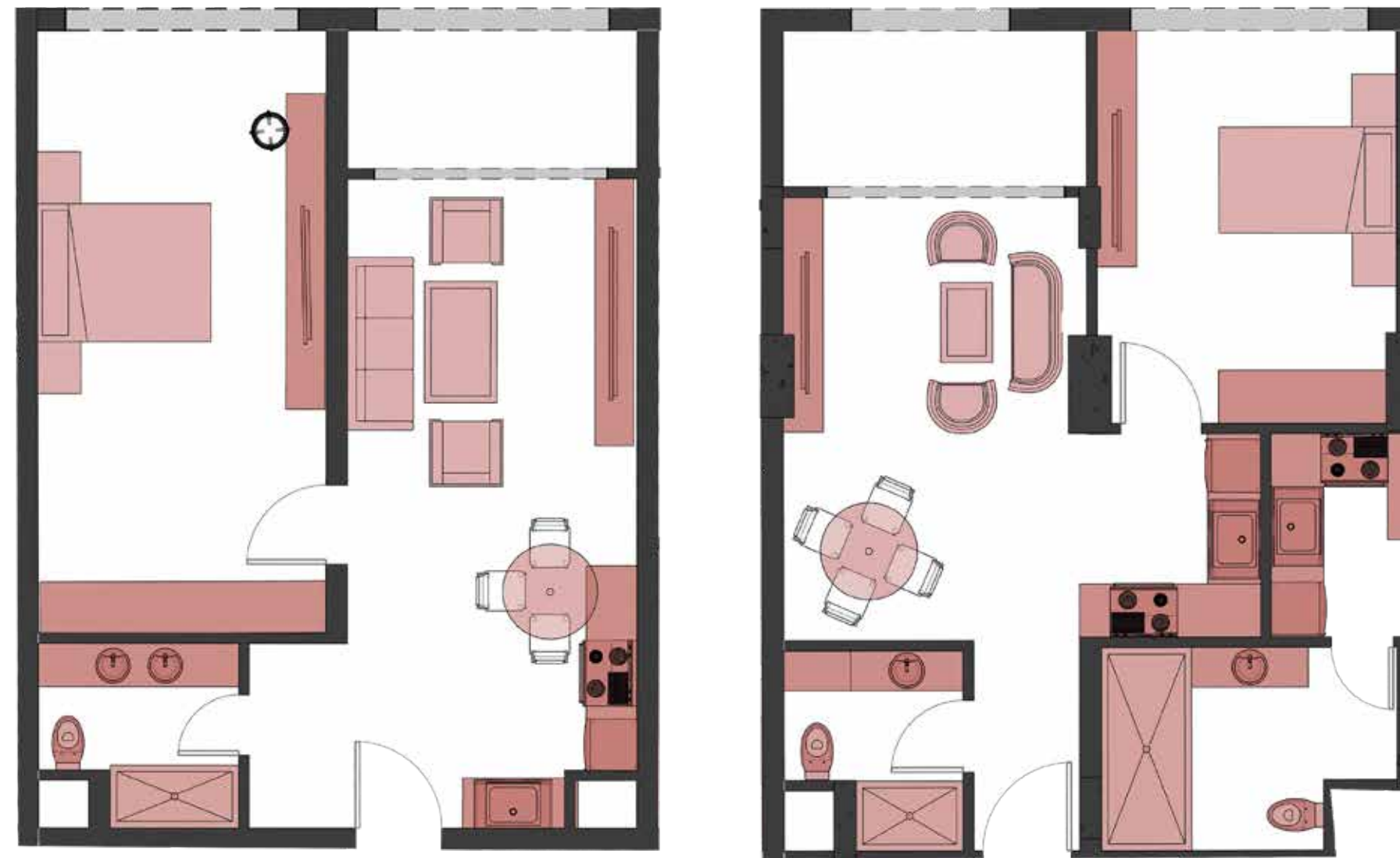
DISCLAIMER

1. All room dimensions are measured to structural elements and exclude wall finishes and construction tolerances. 2. All dimensions have been provided by our consultant architects. 3. All materials, dimensions and drawings are approximate, information subject to change without notice. 4. Actual internal spaces areas may vary from the stated area in the drawings. Drawings not to scale. 5. The developers reserves the right to make technical revisions. 6. Actual front windows, porches, terraces, loggia and exterior trim detail may vary by elevation styles and floor level.

Building B

1 Bed Room

Discover our spacious 1-bedroom units, ranging from 68 m² to 106 m². Ideal for singles or couples, these units offer a generous bedroom, a modern kitchen, and a comfortable living area. Each unit is designed with high-quality finishes, plenty of natural light, and ample storage.



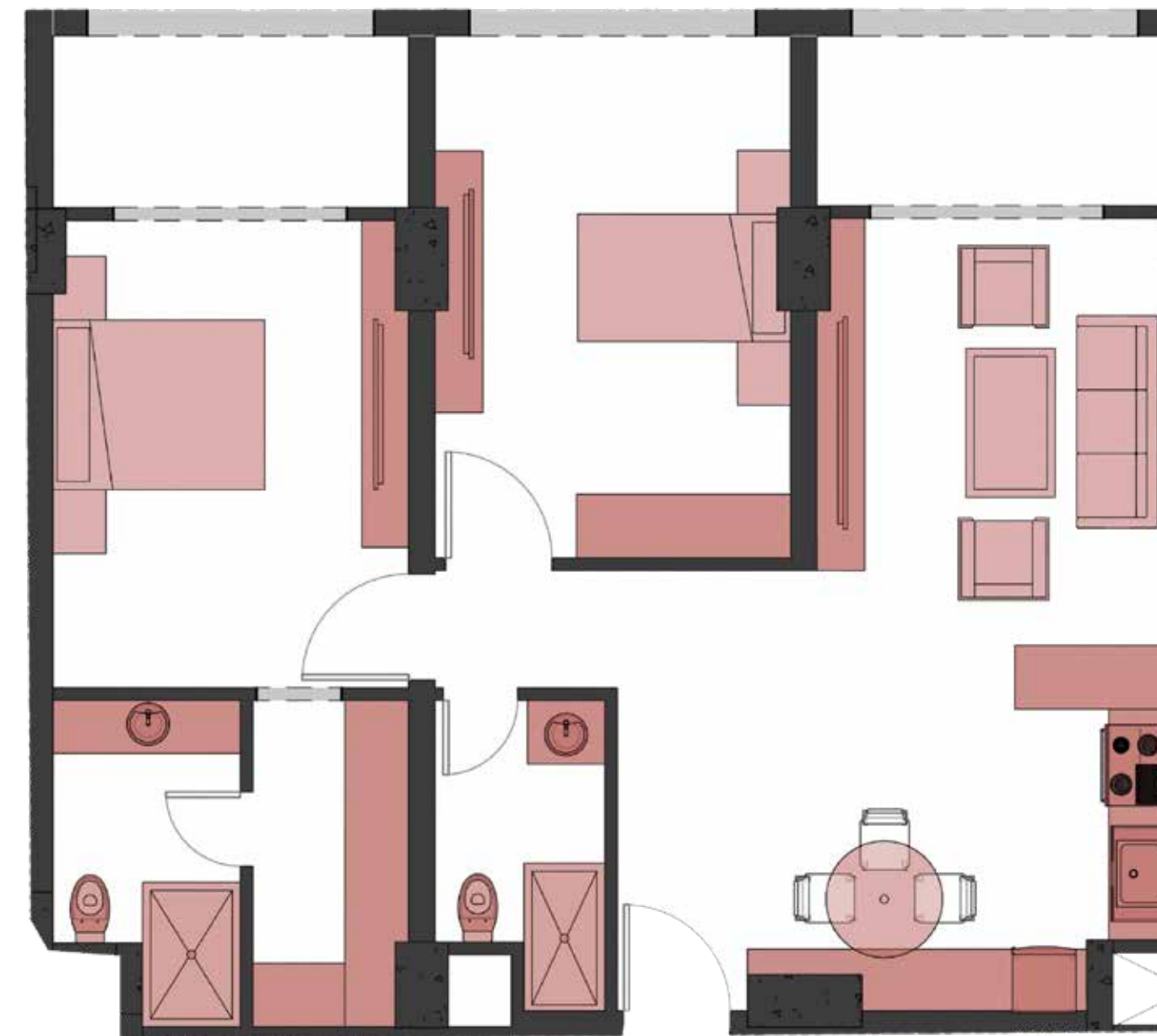
DISCLAIMER

1. All room dimensions are measured to structural elements and exclude wall finishes and construction tolerances. 2. All dimensions have been provided by our consultant architects. 3. All materials, dimensions and drawings are approximate, information subject to change without notice. 4. Actual internal spaces areas may vary from the stated area in the drawings. Drawings not to scale. 5. The developers reserves the right to make technical revisions. 6. Actual front windows, porches, terraces, loggia and exterior trim detail may vary by elevation styles and floor level.

Building B

2 Bed Room

Explore our spacious 2-bedroom units, ranging from 97 m² to 137 m². Perfect for families or roommates, these units feature two comfortable bedrooms, a modern kitchen, and an inviting living area. Designed with high-quality finishes and ample storage, each unit ensures a stylish and practical living space. Located in desirable areas,



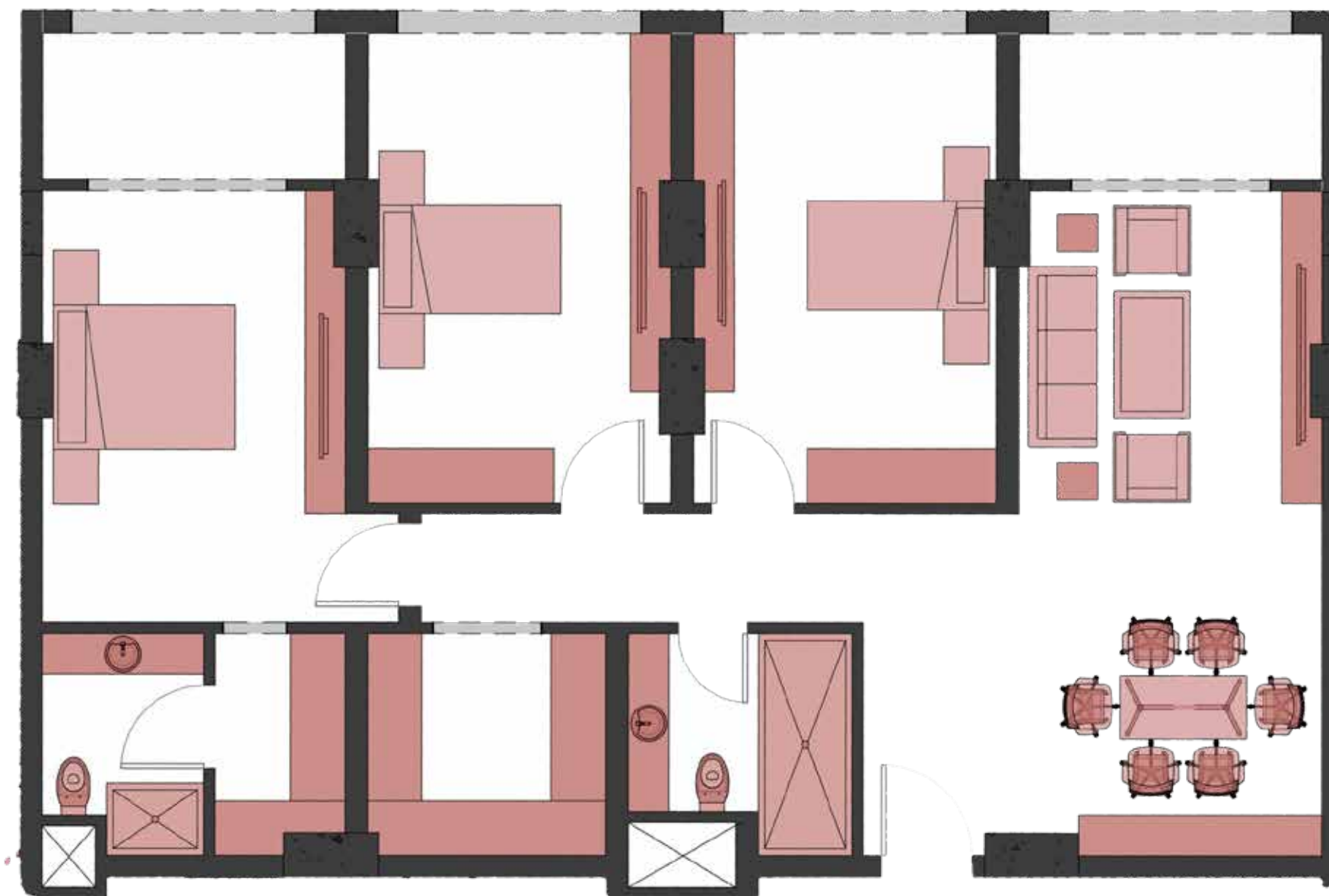
DISCLAIMER

1. All room dimensions are measured to structural elements and exclude wall finishes and construction tolerances. 2. All dimensions have been provided by our consultant architects. 3. All materials, dimensions and drawings are approximate, information subject to change without notice. 4. Actual internal spaces areas may vary from the stated area in the drawings. Drawings not to scale. 5. The developers reserves the right to make technical revisions. 6. Actual front windows, porches, terraces, loggia and exterior trim detail may vary by elevation styles and floor level.

Building B

3 Bed Room

Discover our luxurious 3-bedroom units, ranging from 143 m² to 215 m². Ideal for families or those needing extra space, these units feature three spacious bedrooms, a modern kitchen, and a generous living area. Each unit is designed with high-quality finishes, ample storage, and plenty of natural light.



DISCLAIMER

1. All room dimensions are measured to structural elements and exclude wall finishes and construction tolerances. 2. All dimensions have been provided by our consultant architects. 3. All materials, dimensions and drawings are approximate, information subject to change without notice. 4. Actual internal spaces areas may vary from the stated area in the drawings. Drawings not to scale. 5. The developers reserves the right to make technical revisions. 6. Actual front windows, porches, terraces, loggia and exterior trim detail may vary by elevation styles and floor level.

Building B

Duplex

Experience the elegance of our duplex units, ranging from 143 m² to 215 m². Perfect for families or those seeking extra space, these units feature two levels of spacious living. Enjoy multiple bedrooms, a modern kitchen, and expansive living areas designed with high-quality finishes and abundant natural light.



DISCLAIMER

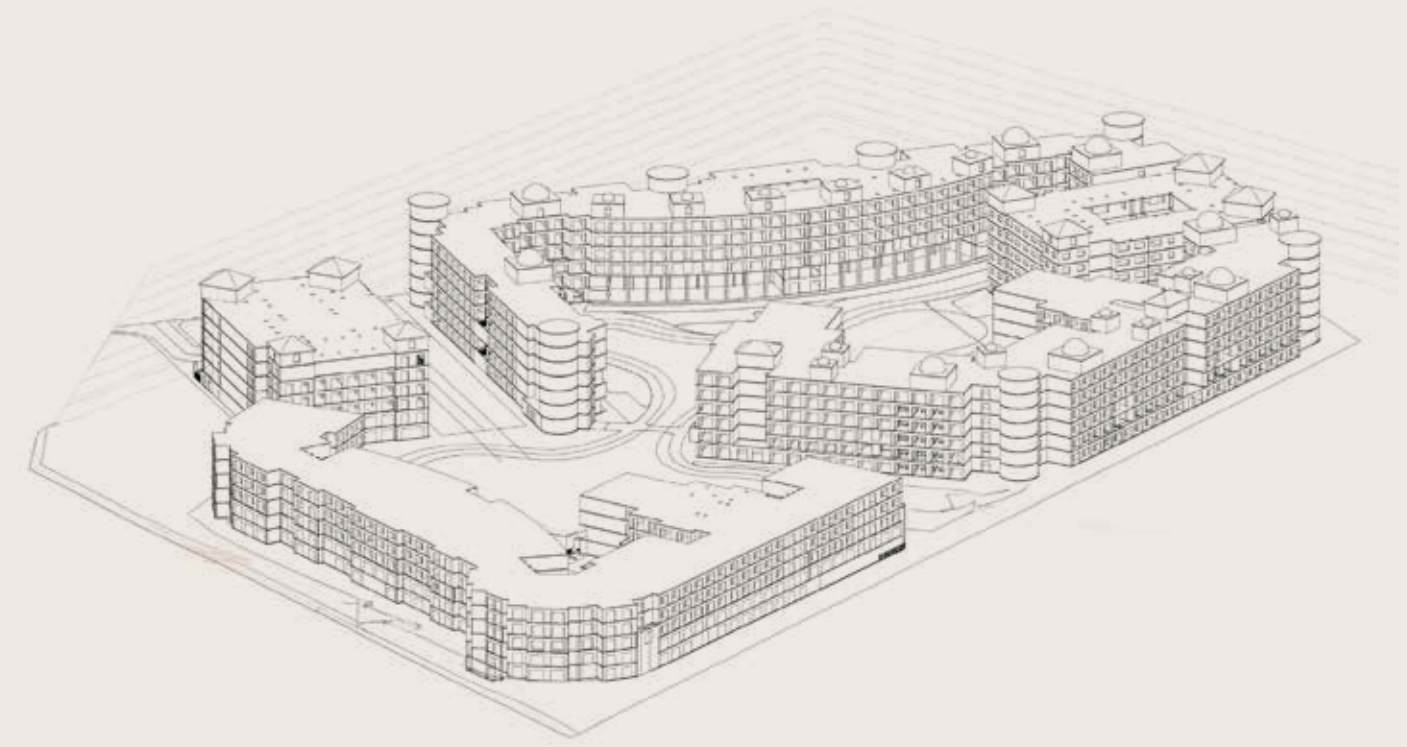
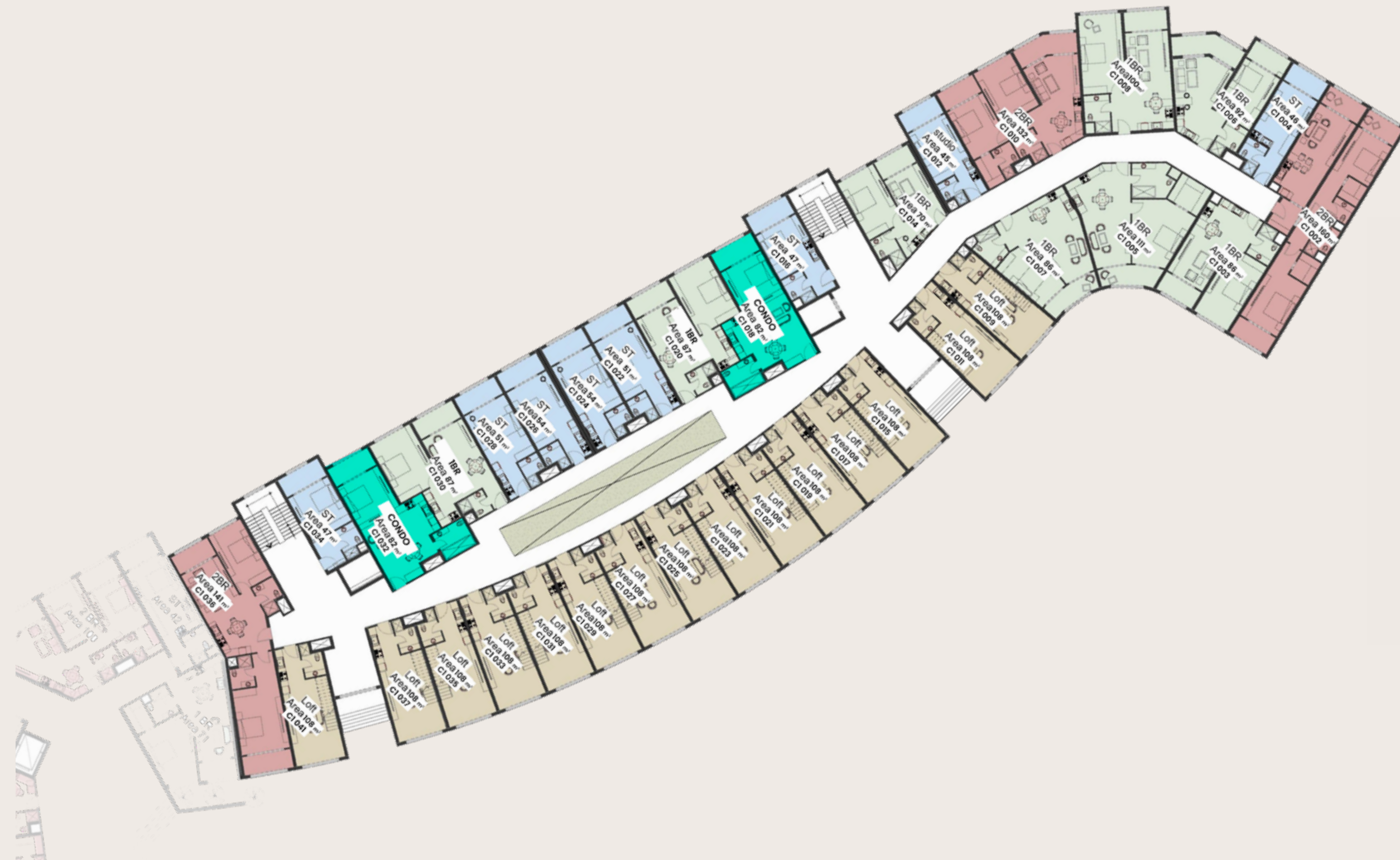
1. All room dimensions are measured to structural elements and exclude wall finishes and construction tolerances. 2. All dimensions have been provided by our consultant architects. 3. All materials, dimensions and drawings are approximate, information subject to change without notice. 4. Actual internal spaces areas may vary from the stated area in the drawings. Drawings not to scale. 5. The developers reserves the right to make technical revisions. 6. Actual front windows, porches, terraces, loggia and exterior trim detail may vary by elevation styles and floor level.



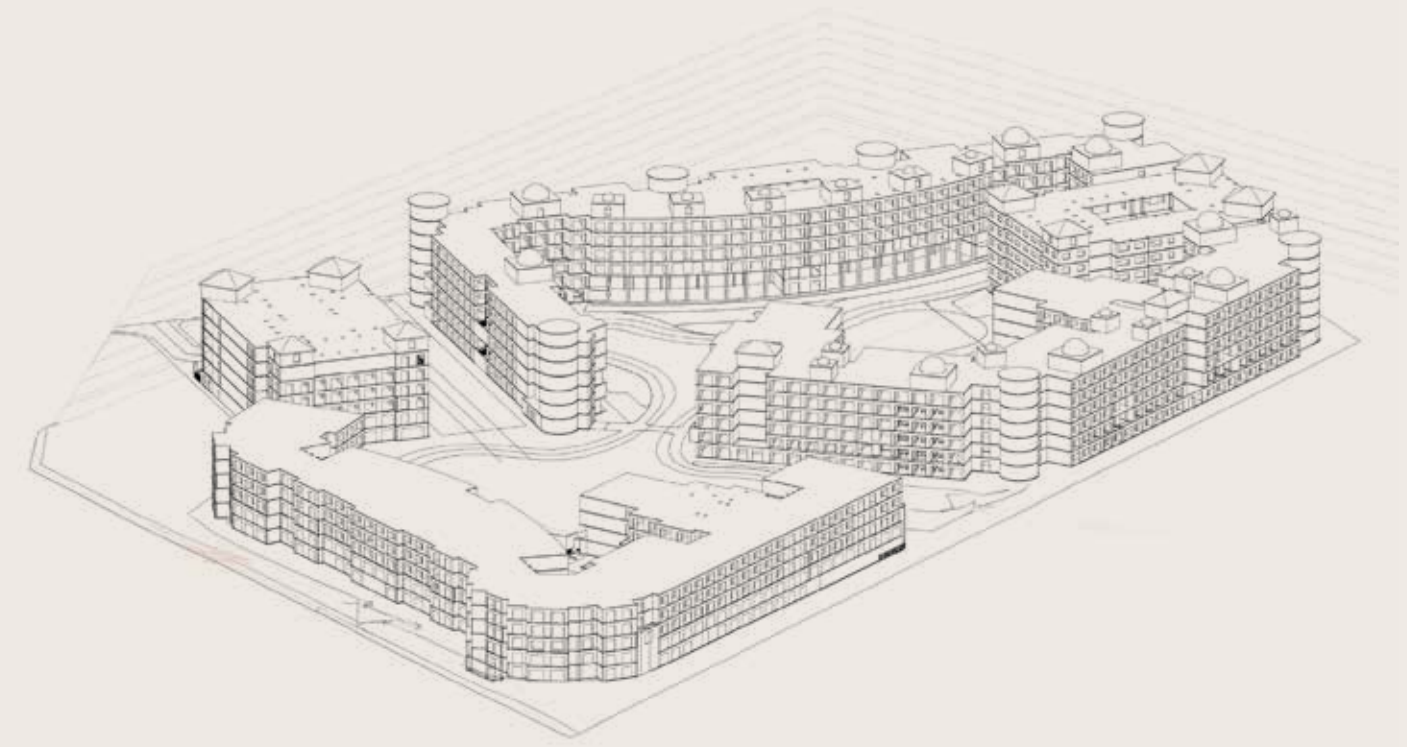
Building C

DISCLAIMER

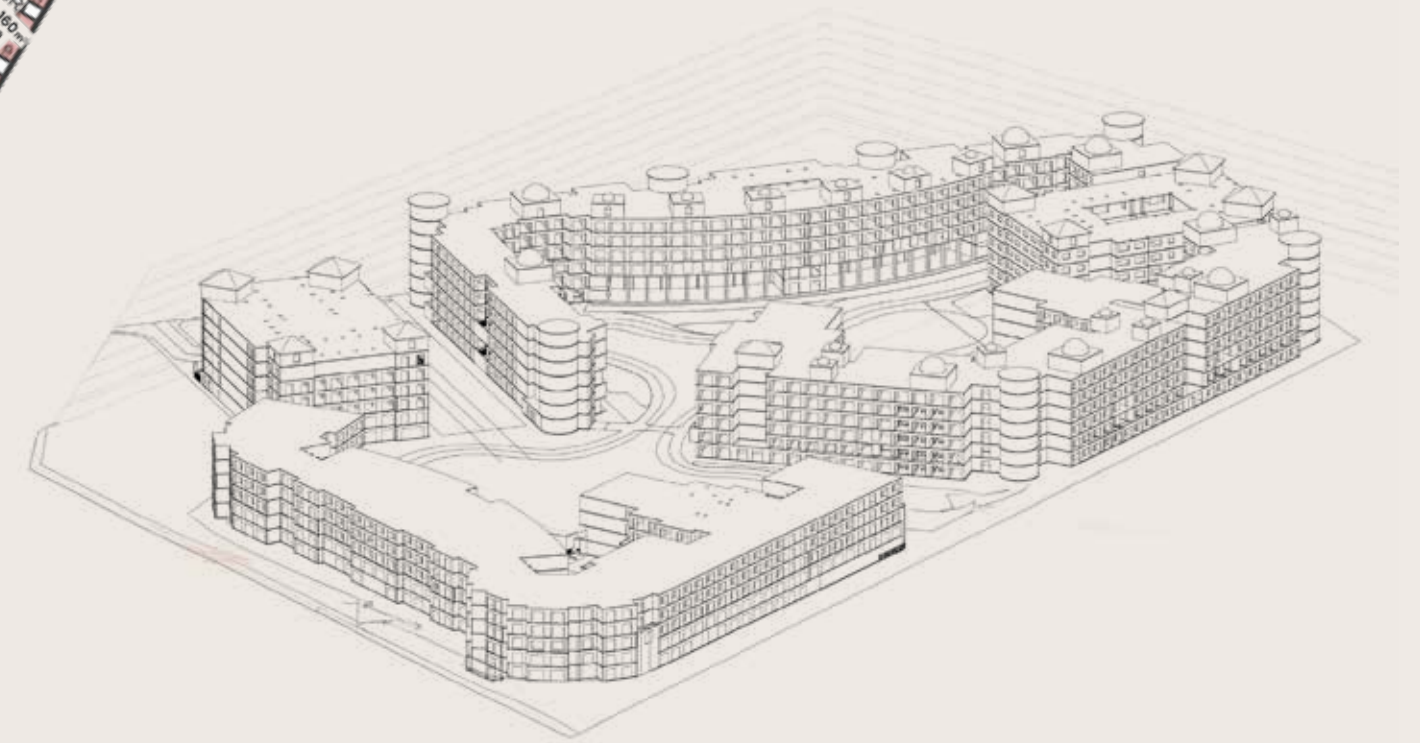
1. This façade is subjected to minor amendments without prior notice. 2. Specification, materials and/or colors might be changed based on the final design and material availability, actual unit finishings for front windows, porches, FRONT VIEW terraces, loggia and exterior trim may vary by elevation styles and floor level. 3. This façade is for illustrative purposes



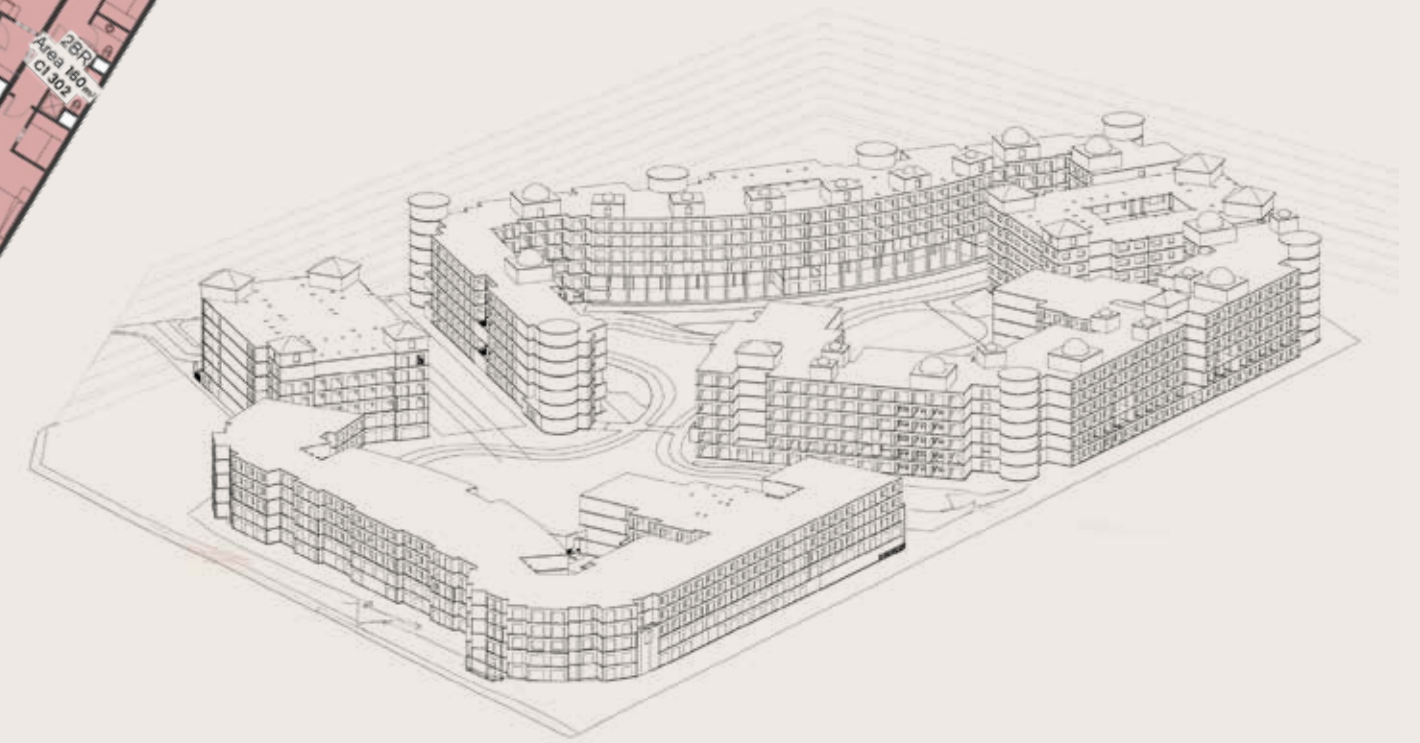
Building C
Ground Floor



Building C
First Floor



Building C
Second Floor



Building C
Third Floor

A close-up photograph of a woman's hands holding a book with a vibrant, intricate pattern in teal, orange, and white on a dark background. The book is held at an angle, and soft, golden light rays emanate from it, creating a warm and ethereal atmosphere. The woman's face is partially visible in profile on the right side of the frame, looking towards the book. She is wearing a white strapless top and a gold necklace. The background is a plain, light color.

Every Reason to Cherish Moments



Interiors

Interiors



Interiors



Interiors

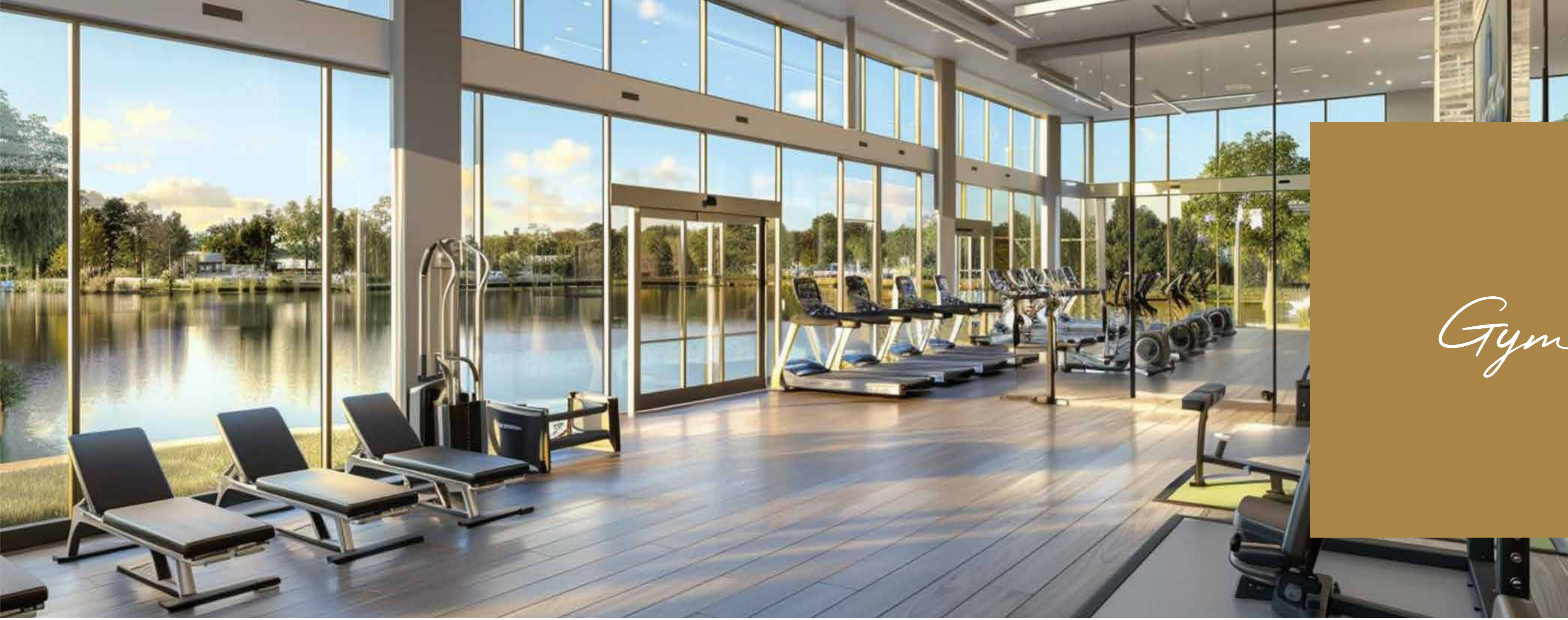


Interiors



Interiors





Gym

Spa





Resturant

Cafe





Indoor Pool

A woman with long blonde hair, wearing sunglasses and a peach-colored long-sleeved dress, stands on the deck of a sailboat. She is looking out towards the right. The background shows a vast blue sky with light, wispy clouds and the ocean in the distance. The sailboat's white sail is visible on the left side of the frame.

Create Memories in Your New Place

 **CASTELLO**
Town

15423

Al Mouhamadi Hoaidak Square - In Front Of The Old VIC Beach

Hurghada

castelloeg.com