









مخطط الطوابق  
FLOOR PLANS



# مخطط الطابق الأرضي GROUND FLOOR PLAN



800 626742  
almamsha.ae

f @ almamshauae

Alef



# مخطط الطابق الأول 1<sup>ST</sup> FLOOR PLAN

WATER FEATURE ZONE

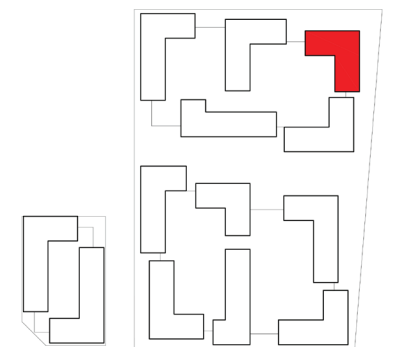


RETAIL ZONE

## LEGEND

- 1 BEDROOM - TYPE 01 : 49.13 SQM
- 1 BEDROOM - TYPE 03 : 49.68 SQM
- 1 BEDROOM - TYPE 04 : 50.14 SQM
- 1 BEDROOM - TYPE 05 : 48.28 SQM
- 1 BEDROOM - TYPE 06 : 54.91 SQM
- 1 BEDROOM - TYPE 08 : 53.28 SQM
- 2 BEDROOM - TYPE 05 : 97.58 SQM
- 2 BEDROOM - TYPE 06 : 98.27 SQM
- 3 BEDROOM - TYPE 02 : 137.16 SQM

## KEYPLAN



CITY VIEW



800 626742  
almamsha.ae

f @ almamshauae









# مخطط الطابق السابع 7<sup>TH</sup> FLOOR PLAN

WATER FEATURE ZONE

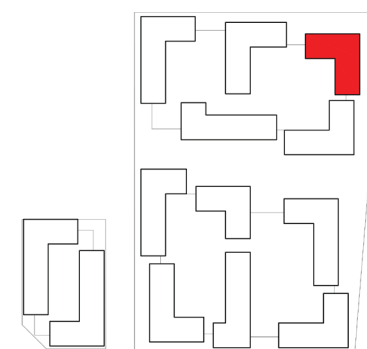
RETAIL ZONE

CITY VIEW

## LEGEND

- 1 BEDROOM - TYPE 01 : 49.13 SQM
- 1 BEDROOM - TYPE 03 : 49.68 SQM
- 1 BEDROOM - TYPE 04 : 50.14 SQM
- 1 BEDROOM - TYPE 05 : 48.28 SQM
- 1 BEDROOM - TYPE 06 : 54.91 SQM
- 1 BEDROOM - TYPE 08 : 53.28 SQM
- 2 BEDROOM - TYPE 05 : 97.58 SQM
- 2 BEDROOM - TYPE 06 : 98.27 SQM
- 3 BEDROOM - TYPE 02 : 137.16 SQM

## KEYPLAN



800 626742  
almamsha.ae

f @ almamshauae





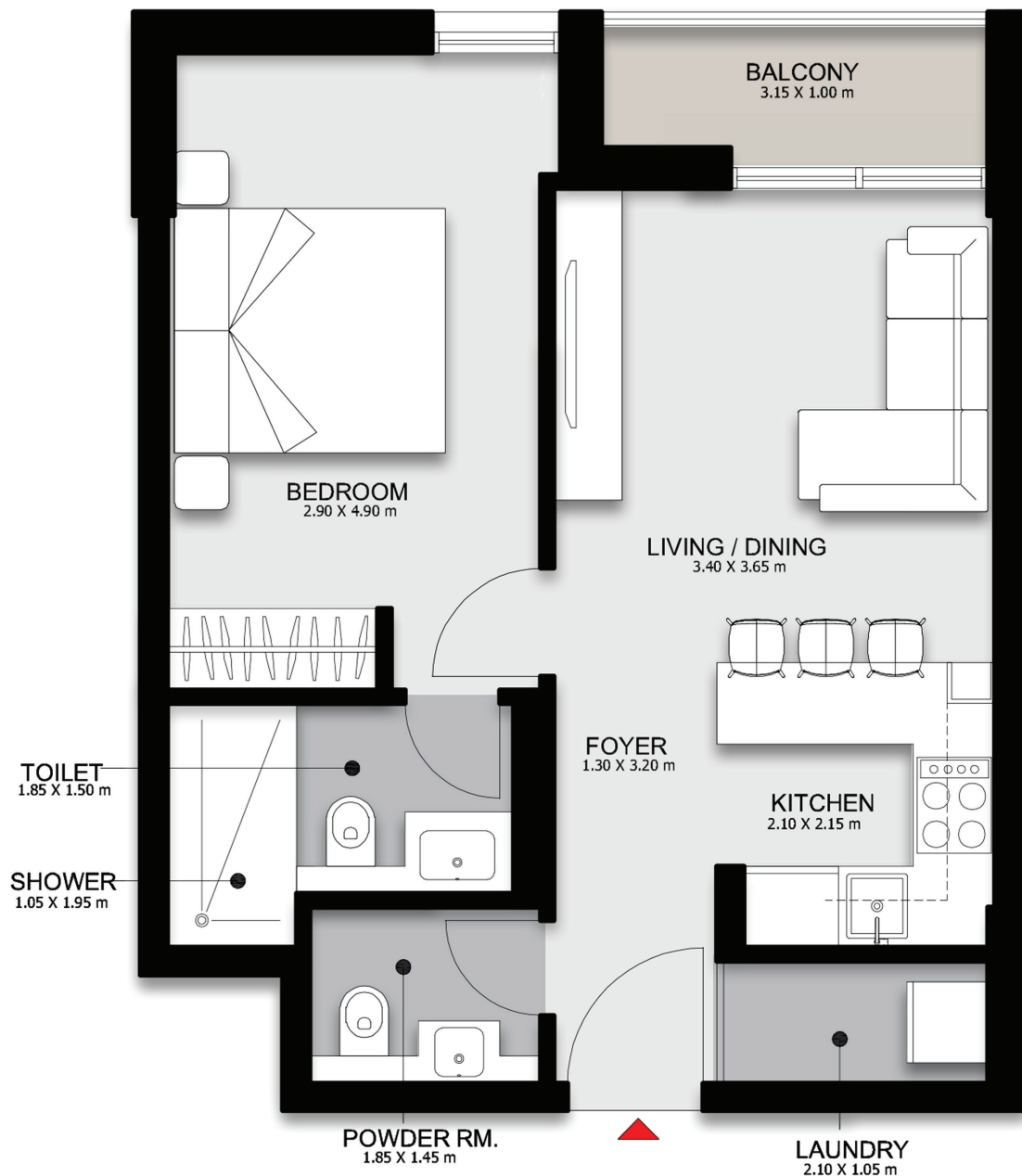


# درب 2 DARB

مخطط الوحدات

UNIT PLANS





800 626742

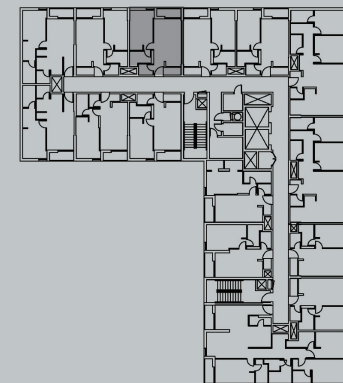
almamsha.ae



almamshauae

# AL MAMSHA

Raseel



## DARB 2

### 1 BEDROOM - TYPE 1B01A -105

#### LEVEL 1

INTERNAL	: 45.98 sq. m.	494.92 sq. ft.
BALCONY	: 3.15 sq. m.	33.91 sq. ft.
GARDEN	: -	
TERRACE	: -	
<b>TOTAL NET</b>	<b>: 49.13 sq. m.</b>	<b>  528.83 sq. ft.</b>

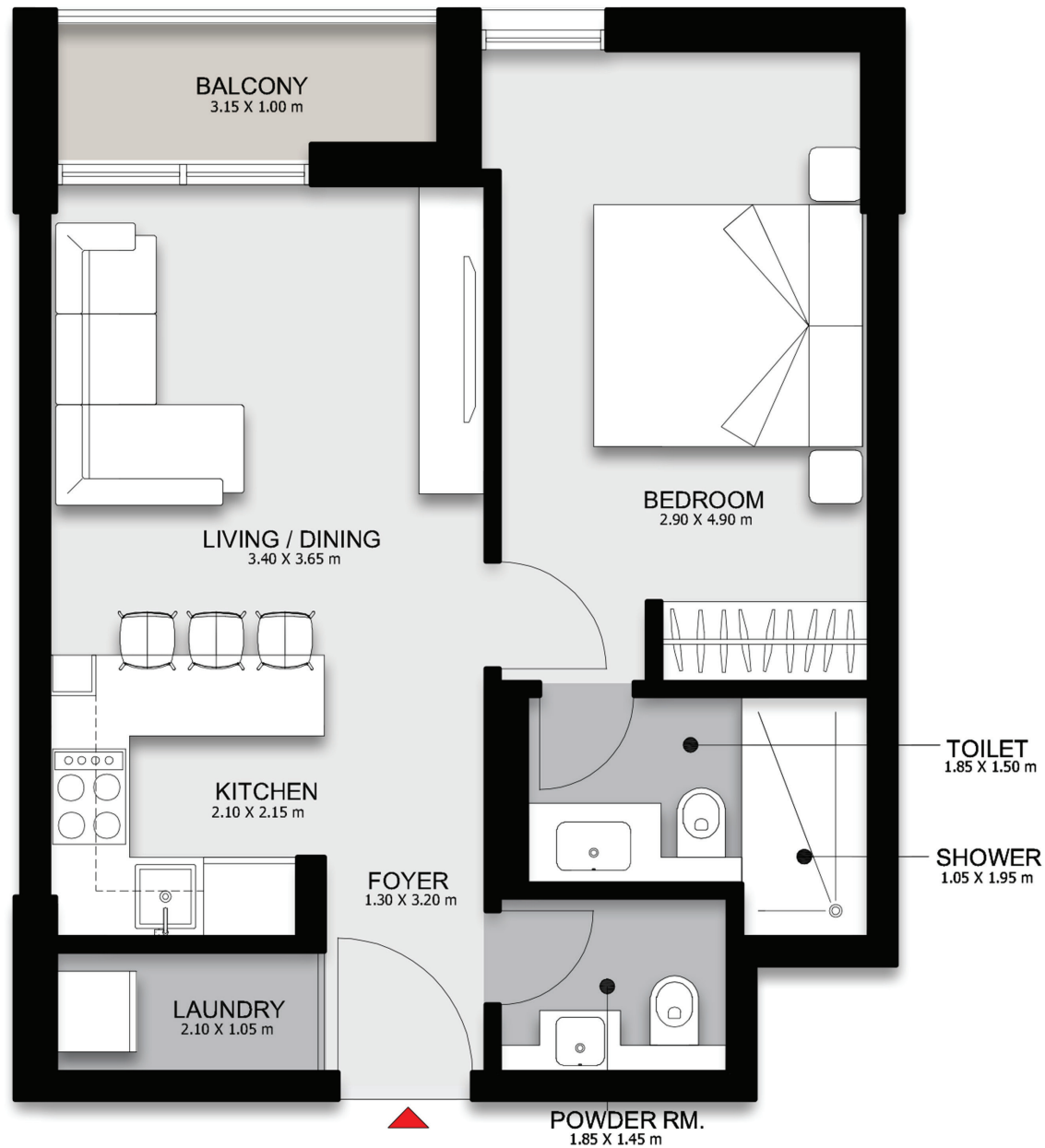
**TOTAL GROSS : 62.81 sq. m. | 676.11 sq. ft.**

#### NOTES:

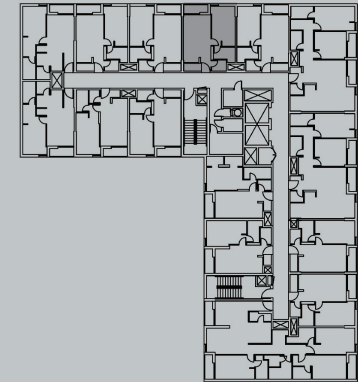
1. Measurements are indicative in metric and imperial excluding construction tolerance.
2. Plots / unit dimensions may vary from brochure.
3. All images used are for illustrative purposes only.
4. Unless stated otherwise, all fittings and interior decorative items shown are for illustrative purposes only and should not be a part of the handing over items.
5. The developer reserves the right to make alterations, at its absolute discretion, without any liability whatsoever up to the final 'as built' status.







# AL MAMSHA *Raseel*



## DARB 2

### 1 BEDROOM - TYPE 1B01B -106

#### LEVEL 1

INTERNAL	: 45.98 sq. m.	494.92 sq. ft.
BALCONY	: 3.15 sq. m.	33.91 sq. ft.
GARDEN	: -	
TERRACE	: -	
<b>TOTAL NET</b>	<b>: 49.13 sq. m.</b>	<b>  528.83 sq. ft.</b>

**TOTAL GROSS : 62.81 sq. m. | 676.11 sq. ft.**

#### NOTES:

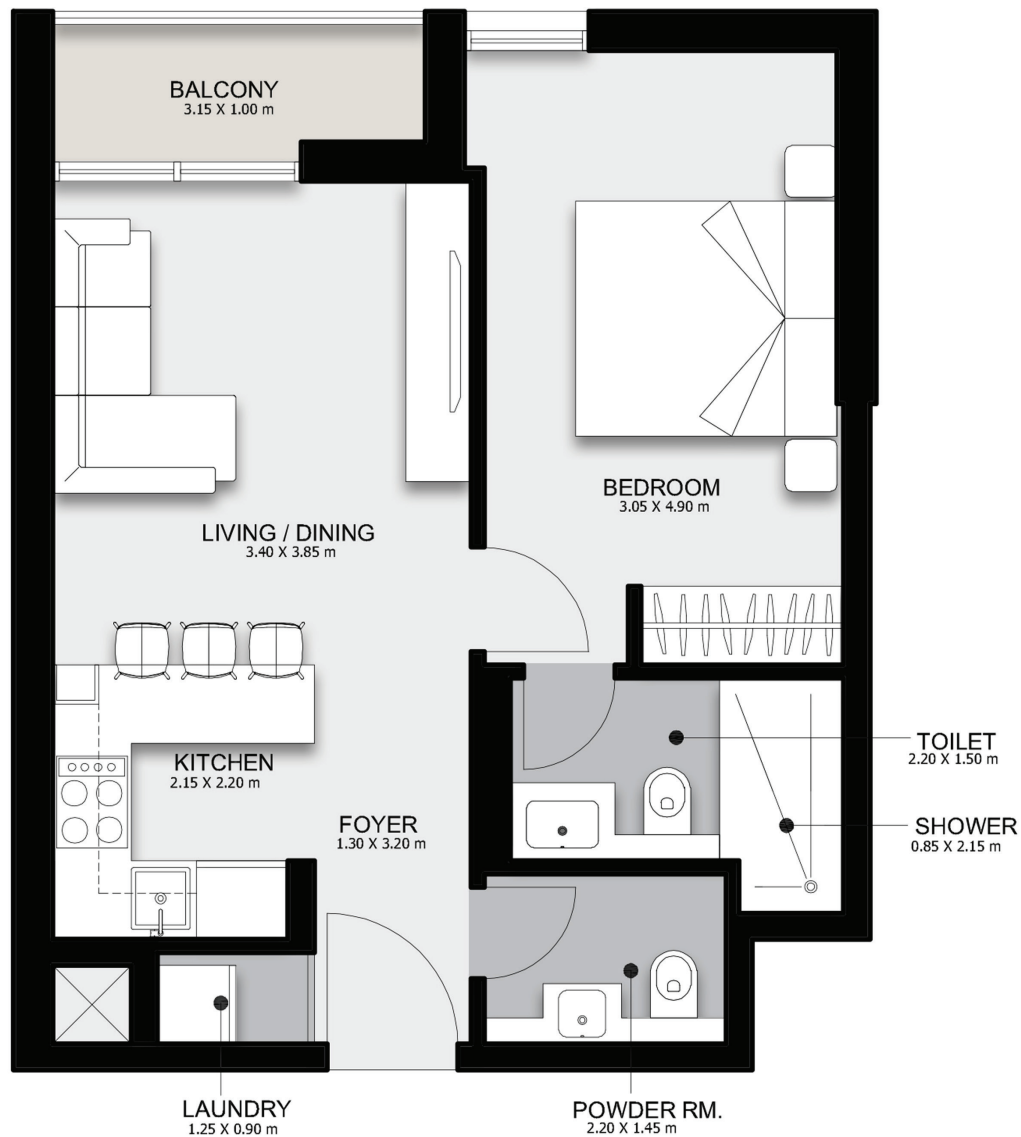
1. Measurements are indicative in metric and imperial excluding construction tolerance.
2. Plots / unit dimensions may vary from brochure.
3. All images used are for illustrative purposes only.
4. Unless stated otherwise, all fittings and interior decorative items shown are for illustrative purposes only and should not be a part of the handing over items.
5. The developer reserves the right to make alterations, at its absolute discretion, without any liability whatsoever up to the final 'as built' status.



800 626742

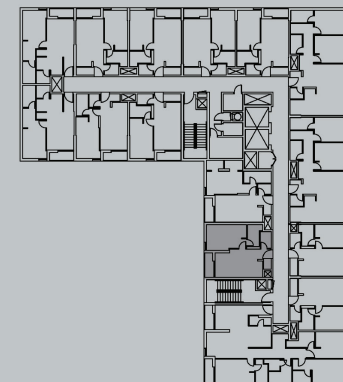
almamsha.ae |   almamshauae





# AL MAMSHA

*Raseel*



## DARB 2

### 1 BEDROOM - TYPE 1B04C -113

#### LEVEL 1

INTERNAL	:	45.53 sq. m.		490.08 sq. ft.
BALCONY	:	3.15 sq. m.		33.91 sq. ft.
GARDEN	:	-		
TERRACE	:	-		
<b>TOTAL NET</b>	:	<b>48.68 sq. m.</b>		<b>523.99 sq. ft.</b>

**TOTAL GROSS : 62.24 sq. m. | 669.91 sq. ft.**

#### NOTES:

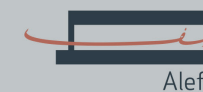
1. Measurements are indicative in metric and imperial excluding construction tolerance.
2. Plots / unit dimensions may vary from brochure.
3. All images used are for illustrative purposes only.
4. Unless stated otherwise, all fittings and interior decorative items shown are for illustrative purposes only and should not be a part of the handing over items.
5. The developer reserves the right to make alterations, at its absolute discretion, without any liability whatsoever up to the final 'as built' status.

800 626742

almamsha.ae

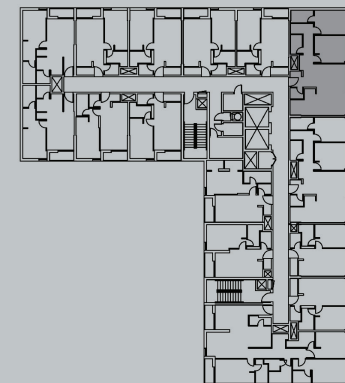


almamshauae





# AL MAMSHA *Raseel*



## DARB 2

### 1 BEDROOM - TYPE 2B05A -108

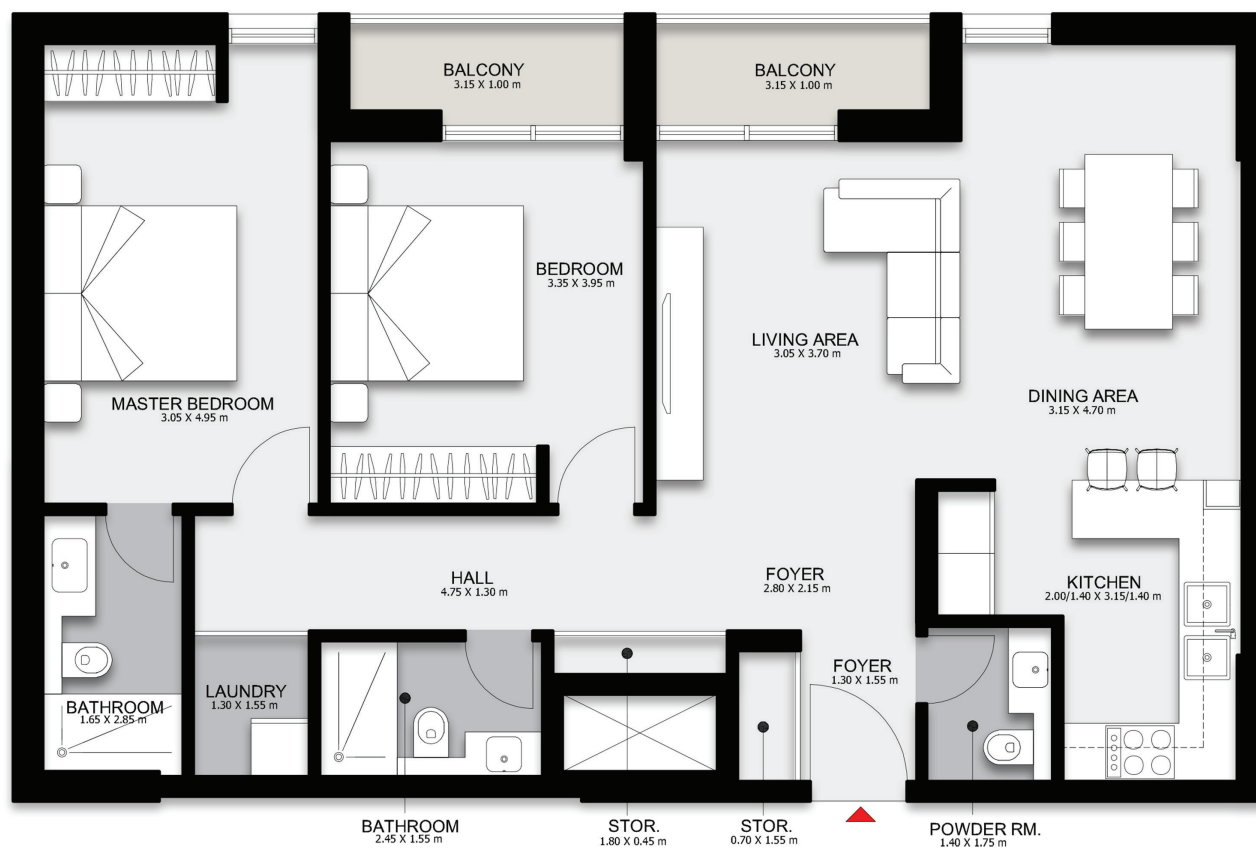
#### LEVEL 1

INTERNAL	: 91.28 sq. m.   982.53 sq. ft.
BALCONY	: 6.3 sq. m.   67.81 sq. ft.
GARDEN	: -
TERRACE	: -
<b>TOTAL NET</b>	<b>: 97.58 sq. m.   1050.34 sq. ft.</b>

**TOTAL GROSS : 124.76 sq. m. | 1342.85 sq. ft**

#### NOTES:

1. Measurements are indicative in metric and imperial excluding construction tolerance.
2. Plots / unit dimensions may vary from brochure.
3. All images used are for illustrative purposes only.
4. Unless stated otherwise, all fittings and interior decorative items shown are for illustrative purposes only and should not be a part of the handing over items.
5. The developer reserves the right to make alterations, at its absolute discretion, without any liability whatsoever up to the final 'as built' status.



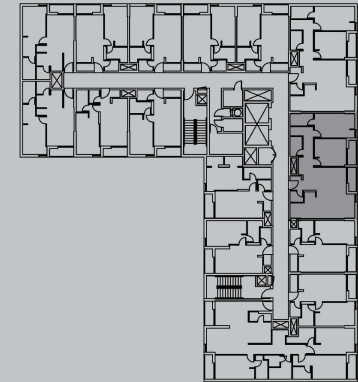
800 626742

almamsha.ae |   almamshauae





# AL MAMSHA *Raseel*



## DARB 2

### 1 BEDROOM - TYPE 2B06A -109

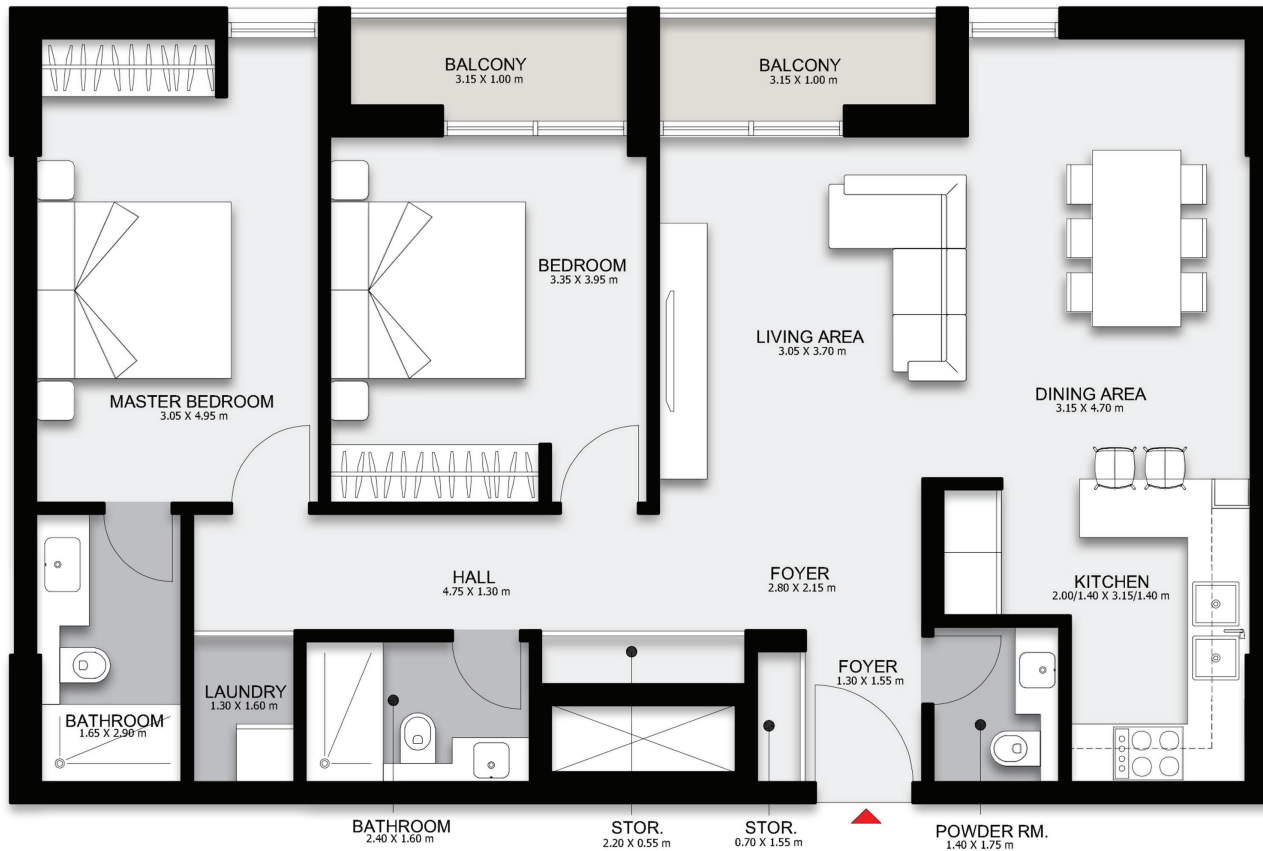
#### LEVEL 1

INTERNAL	:	91.97 sq. m.		989.96 sq. ft.
BALCONY	:	6.3 sq. m.		67.81 sq. ft.
GARDEN	:	-		
TERRACE	:	-		
<b>TOTAL NET</b>	:	<b>98.27 sq. m.</b>		<b>1057.77 sq. ft.</b>

**TOTAL GROSS : 125.64 sq. m. | 1352.35 sq. ft**

#### NOTES:

1. Measurements are indicative in metric and imperial excluding construction tolerance.
2. Plots / unit dimensions may vary from brochure.
3. All images used are for illustrative purposes only.
4. Unless stated otherwise, all fittings and interior decorative items shown are for illustrative purposes only and should not be a part of the handing over items.
5. The developer reserves the right to make alterations, at its absolute discretion, without any liability whatsoever up to the final 'as built' status.



800 626742

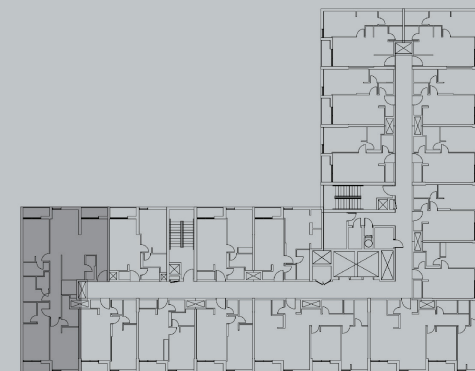
almamsha.ae |   almamshauae







# AL MAMSHA *Raseel*



## DARB 1

### 3 BEDROOM - TYPE 3B01A - 213 LEVEL 2

INTERNAL : 126.16 sq. m. | 1357.97 sq. ft.  
BALCONY : 9.45 sq. m. | 101.72 sq. ft.  
GARDEN : -  
TERRACE : -  
**TOTAL NET : 135.61 sq. m. | 1459.69 sq. ft.**

**TOTAL GROSS : 166.25 sq. m. | 1789.50 sq. ft.**

#### NOTES:

1. Measurements are indicative in metric and imperial excluding construction tolerance.
2. Plots / unit dimensions may vary from brochure.
3. All images used are for illustrative purposes only.
4. Unless stated otherwise, all fittings and interior decorative items shown are for illustrative purposes only and should not be a part of the handing over items.
5. The developer reserves the right to make alterations, at its absolute discretion, without any liability whatsoever up to the final 'as built' status.

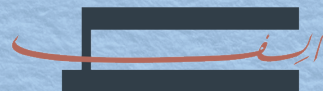


800 626742

almamsha.ae |   almamshauae



An aqua living experience by



Alef