

**VALDA**  
VILLAGE



*Valda Village*  
PROJECT BY VALDA DEVELOPMENTS

*Live*  
WHAT TRULY MATTERS



More than just a place, a village is a way of life. It represents safety, belonging, and meaningful connection. It's where children grow up in a nurturing environment, where families thrive, and where everyday life is lived with comfort and ease.

At the heart of Valda Village's concept is a powerful idea, one that brings together Valda's enduring trust and reliability with a perfected living experience shaped around what truly matters.



# A STRATEGIC LOCATION With Mostakbal City

Strategically located within the first and most established phase of Mostakbal City, Valda Village is situated at the heart of its most vibrant and liveable neighborhood. Its prime location ensures seamless access to key destinations making it one of the most connected and desirable addresses in Mostakbal City.

**RING ROAD**  
*2 minutes*

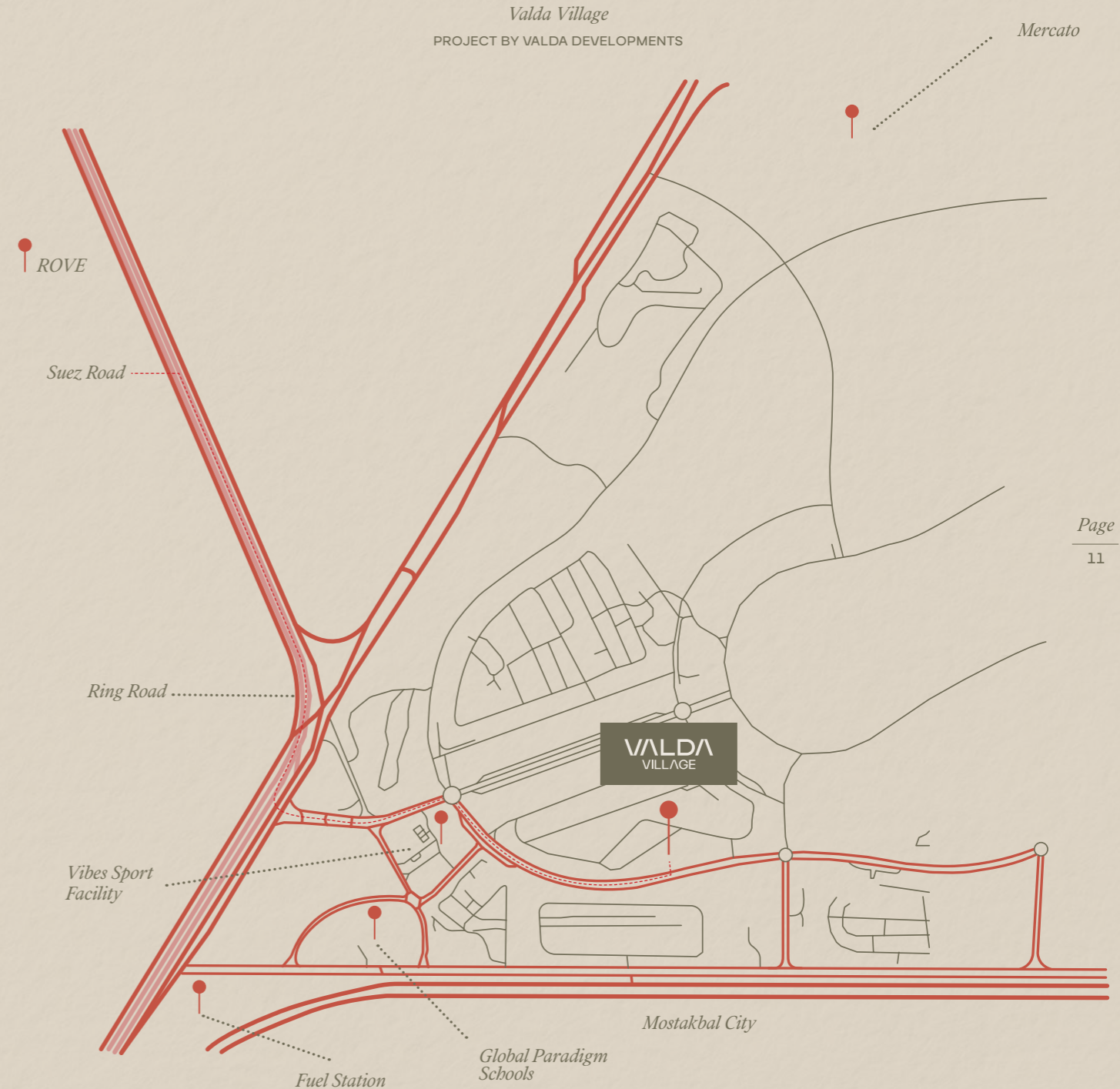
**SUEZ ROAD**  
*8 minutes*

**FUEL STATION**  
*3 minutes*

**MERCATO AREA**  
*1 minute*

**GLOBAL PARADIGM SCHOOL**  
*1 minute*

**VIBES SPORT FACILITY**  
*1 minute*





GET A GLIMPSE INSIDE

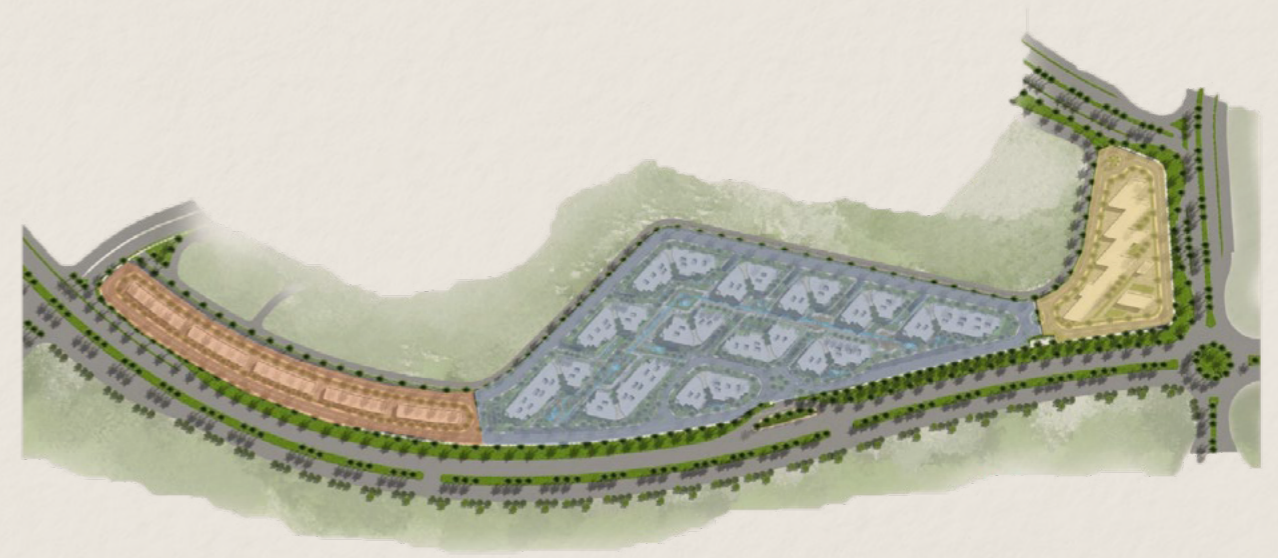


GET A GLIMPSE INSIDE

## Get a GLIMPSE INSIDE

Thoughtfully designed to place residences at the core of the development, creating a natural transition between the lively commercial zones and the exclusive serviced apartments.

Just steps away from vibrant retail, dining and lifestyle experiences, while also neighbouring the convenience and services offered by premium hospitality-style living.



COMMERCIAL

RESIDENTIAL

SERVICED APARTMENTS

## THE VILLAGE DESIGNED TO LIVE IN!

Valda Village has been thoughtfully masterplanned and meticulously designed to offer residents an elevated living experience, balancing natural beauty with modern functionality. With open areas, lush landscaping, and smart design throughout, it's a place where nature and community come together beautifully.



*Everything here is designed to feel open, functional, and effortlessly connected to the world around you.*

126,000 M2

LAND AREA

*Fostering the village values*

750

UNITS

*Each carrying a story*

24

BUILDINGS

*Represents a new chapter  
in the village*

18

COMMUNAL HUBS

*Designed to bring  
hearts together*



Valda Village's design and architecture has given birth to an address where technology, nature, and community work in harmony to create a connected, flexible, and sustainable way of living.

Inspired by the design of a motherboard, Valda Village features a smart circulation system; streets flow like circuit lines, while flexible public squares adapt to host a variety of events, creating vibrant spaces for community interaction. Green areas are thoughtfully placed to improve visibility and encourage moments of pause and connection—functioning as nature's touchpoints within the urban fabric. A non centralized building approach allows organic fluidity and connection tunnels that weave the space together. These passageways support smooth transitions between zones, enhancing accessibility while preserving architectural harmony.



## DESIGN & ARCHITECTURE







## A CLUBHOUSE Crafted For Living Well.

**1800 SQM BUILT FOR BELONGING**

*Redefining modern living, keeping what matters most close,  
shared, and effortlessly part of your routine!*

18 communal hubs, each offering thoughtfully selected amenities, are spread across the project. Every building has its own hub, set against stunning landscape views.

*A Village Crafted for Your Lifestyle*  
Where Every MOMENT Feels Right.

COMMUNAL HUBS · COMMUNAL HUBS ·  
18  
COMMUNAL HUBS · COMMUNAL HUBS

BUILT  
SPACES FOR  
EVERY NEED

Valda Village  
PROJECT BY VALDA DEVELOPMENTS



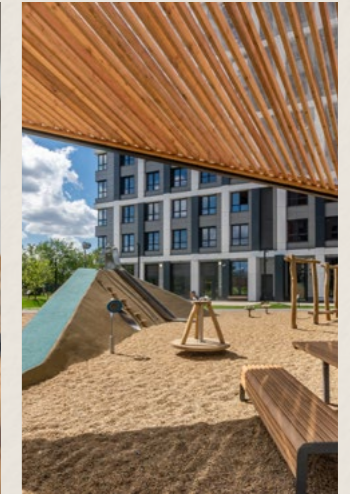
*Game room*



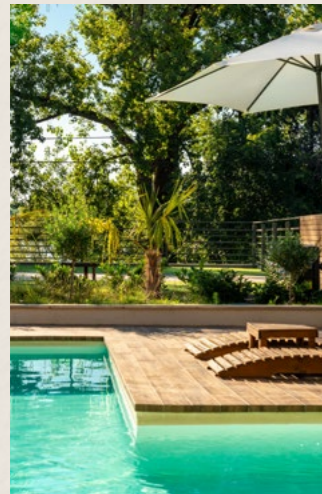
*Focus rooms*



*Meditation area*



*Social hall*



*Pool*



*Fitness Studio*



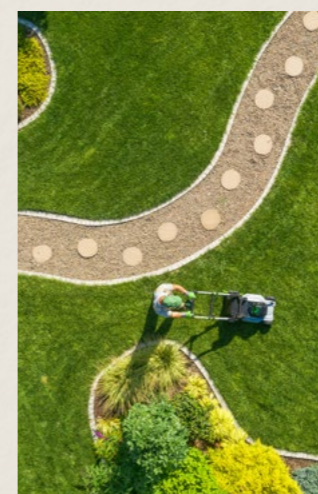
*Kids area*



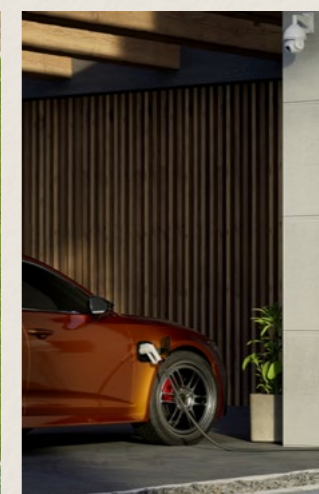
*Entertainment room*



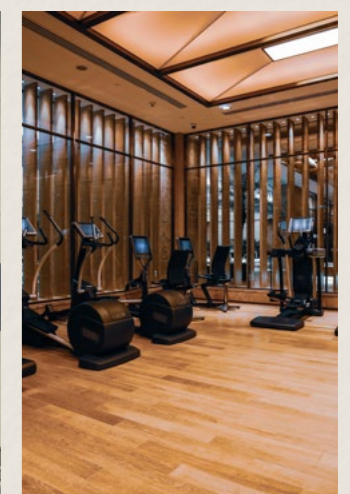
*Cafeteria*



*Landscape gardens*



*Parking*



*Gym*

# PHASE 1







**VALLDA**  
VILLAGE

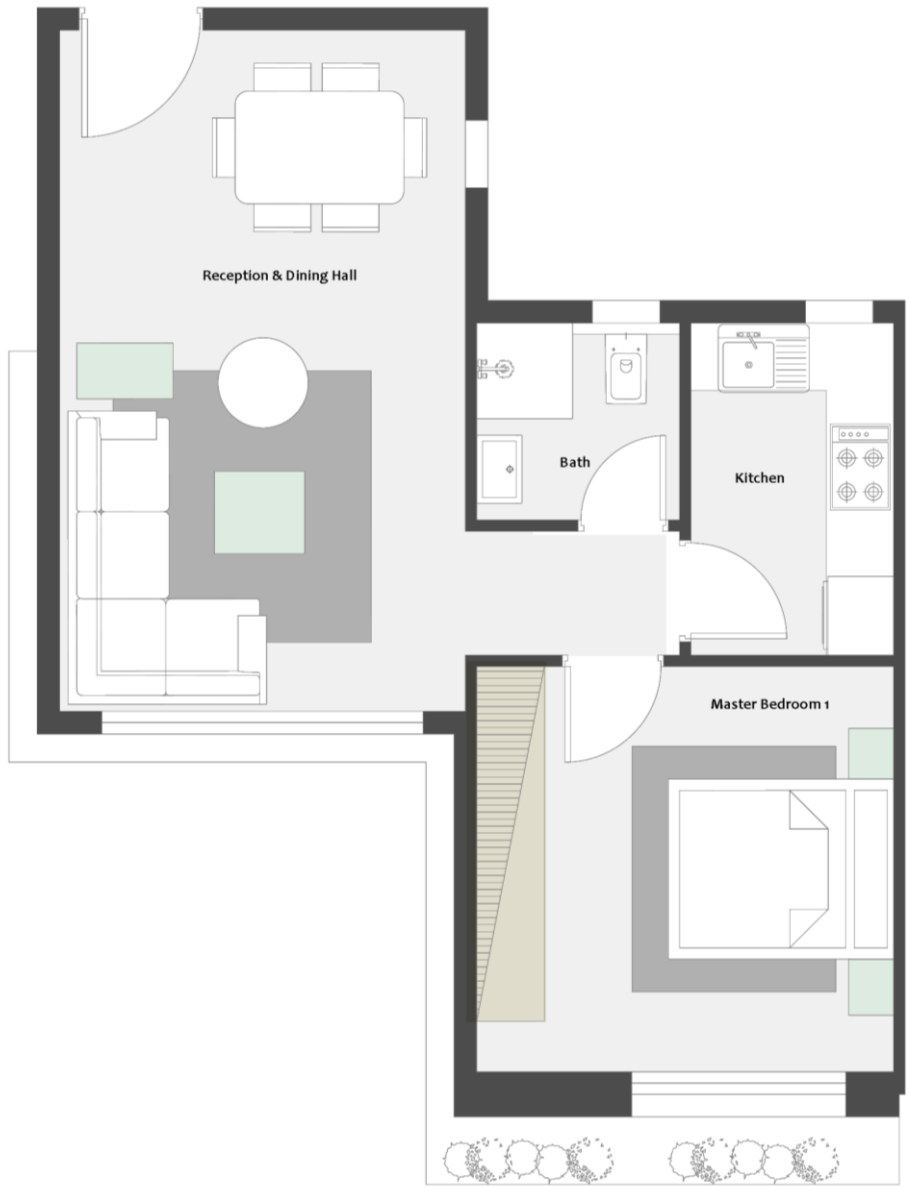
Typical Floor

# V2-C-21a Type C

Area 67 m<sup>2</sup> - 1 Bedroom

Second Floor

Kitchen	3.20m x 1.95m
Reception & Dining Hall	6.65m x 3.85m
Master Bedroom 1	4.00m x 3.95m
Bath	1.95m x 1.90m



**VALDA**  
VILLAGE

VALDA  
DEVELOPMENTS