



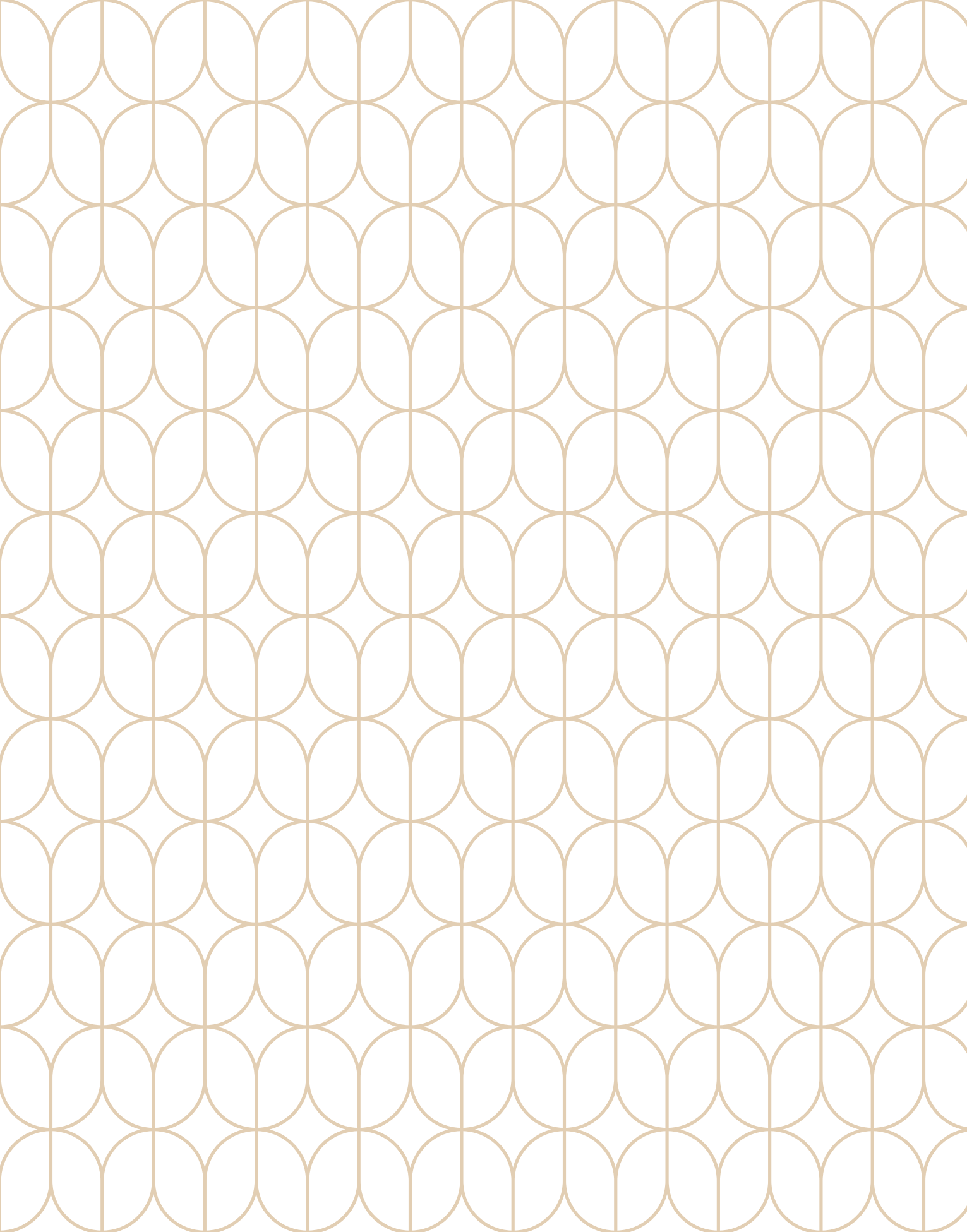
جوقد

With you . . We thrive



YOUR NEW ADDRESS

With stunning views and integrated facilities,
enjoy living in your modern home.



ABOUT US

Albatha Real Estate is one of the oldest real estate company established over 50 years ago. It owns, develops, leases, and manages a diverse array of commercial, residential, retail, and industrial properties as part of its commitment to meeting a broad spectrum of property requirements in the UAE.

From apartment blocks and villa developments to warehouses, showrooms, mosques, and industrial facilities, Al Batha Real Estate has a wide and influential presence across the UAE, actively supporting the property sector and contributing to the economy.

FLOOR PLANS



SHARJAH -

WHERE MODERNITY MEETS HERITAGE

Sharjah's steadfast dedication to safeguarding its rich Islamic heritage, deep-rooted history, and vibrant culture has established its prominent position on the global stage. This is reflected in the numerous international acknowledgements of the emirate's achievements and successes.

Sharjah narrates its vibrant story through its renowned museums, carefully restored art and heritage sites, and lively cultural festivals.

Sharjah's strong emphasis on family values and bonds is deeply rooted in Islamic teachings. Its vision of social cohesion originates from stable and supportive families, which are essential to the emirate's development. This dedication is further highlighted by the launch of the Sharjah Family Development Program in August 2025. The programme aims to further strengthen family ties to ensure overall well-being and progress.

The United Nations Educational, Scientific and Cultural Organization (UNESCO) declared the Emirate of Sharjah, under the wise leadership of His Highness Sheikh Dr. Sultan bin Muhammad Al Qasimi, Member of the Supreme Council of the United Arab Emirates and Ruler of Sharjah, the Cultural Capital of the Arab World in 1998. In 2014, Sharjah was named the Capital of Islamic Culture. UNESCO further declared Sharjah the World Book Capital in 2019. These achievements reflect the Emirate of Sharjah's influence across various cultural, literary, and historical fields.

In July 2025, the UNESCO World Heritage Committee adopted a decision to inscribe the archaeological site of Faya in the Emirate of Sharjah on the prestigious UNESCO World Heritage List, which includes sites of outstanding value to humanity.

The site is also referred to as the "Faya Paleo landscape," meaning "the prehistoric cultural landscape of Faya." It dates to the Palaeolithic era and is the oldest known human settlement in a desert environment, approximately 200,000 years old.



TYPE B-4

Units: 32

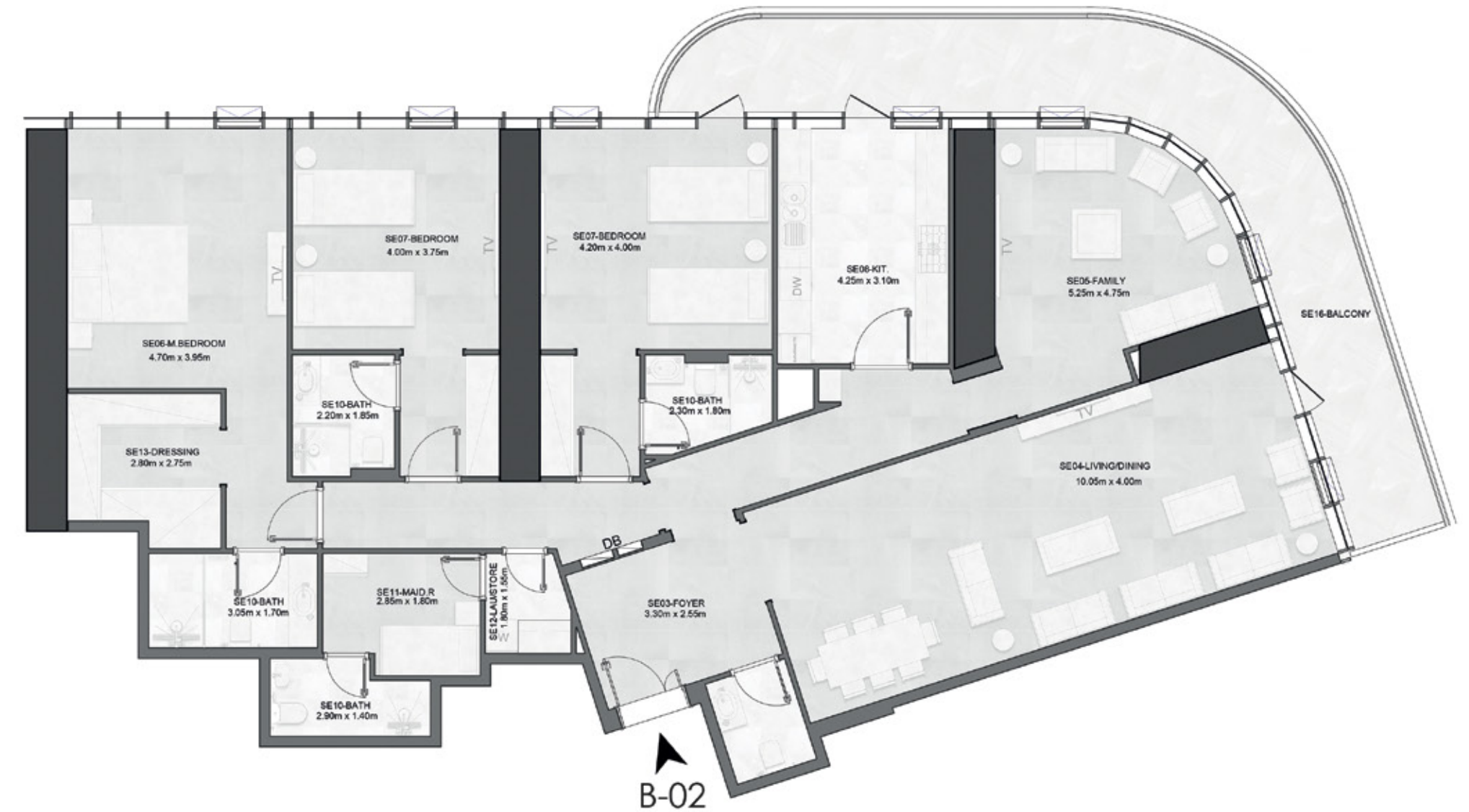
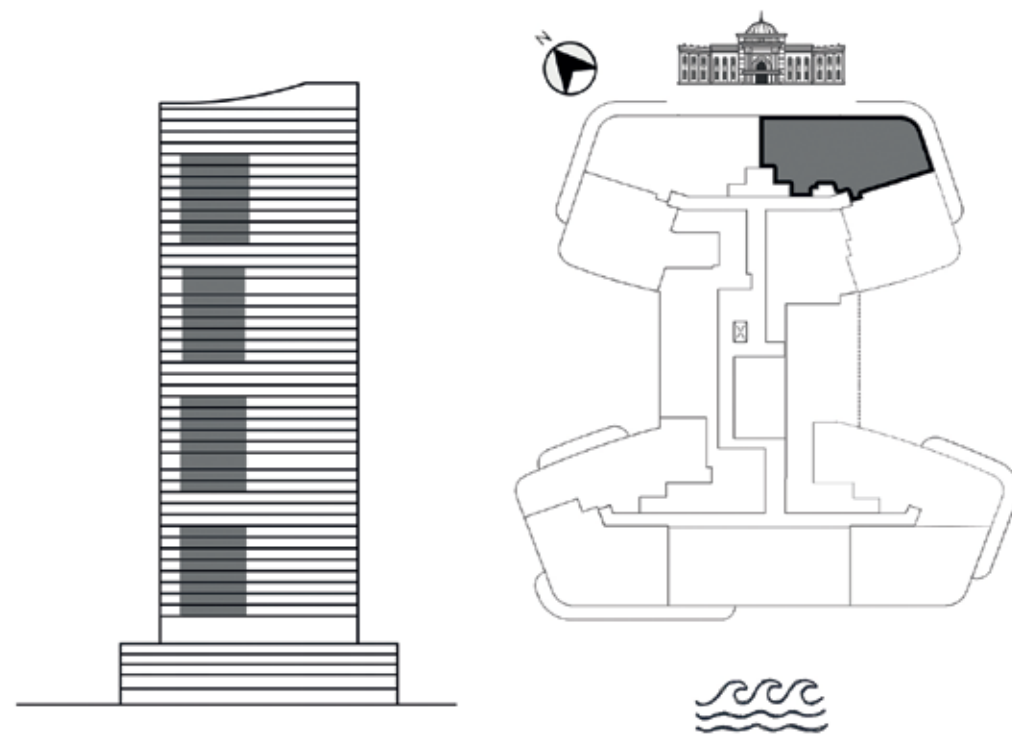
3 Bedrooms

Located at floors:

2, 3, 4, 5, 6, 7, 8, 9, 13, 14,
15, 16, 17, 18, 19, 20, 24,
25, 26, 27, 28, 29, 30, 31 35,
36, 37, 38, 39, 40, 41, 42

Average area:

2,848 ft² | 264.63m²



All stated areas and dimensions - including terrace areas - are indicative for illustration purposes and may vary by floor and unit location.



A NEW ADDRESS
FOR EXCELLENCE

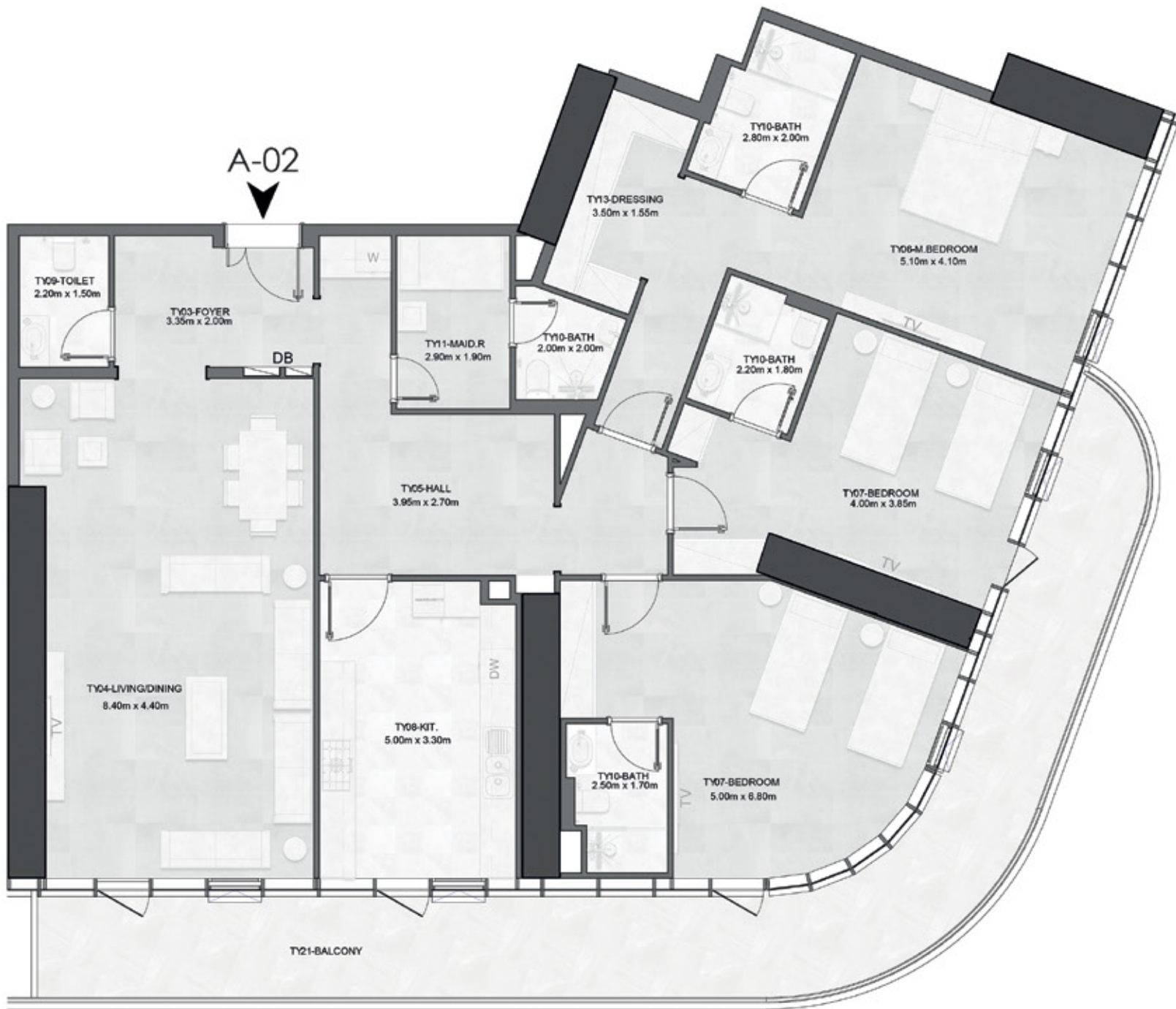
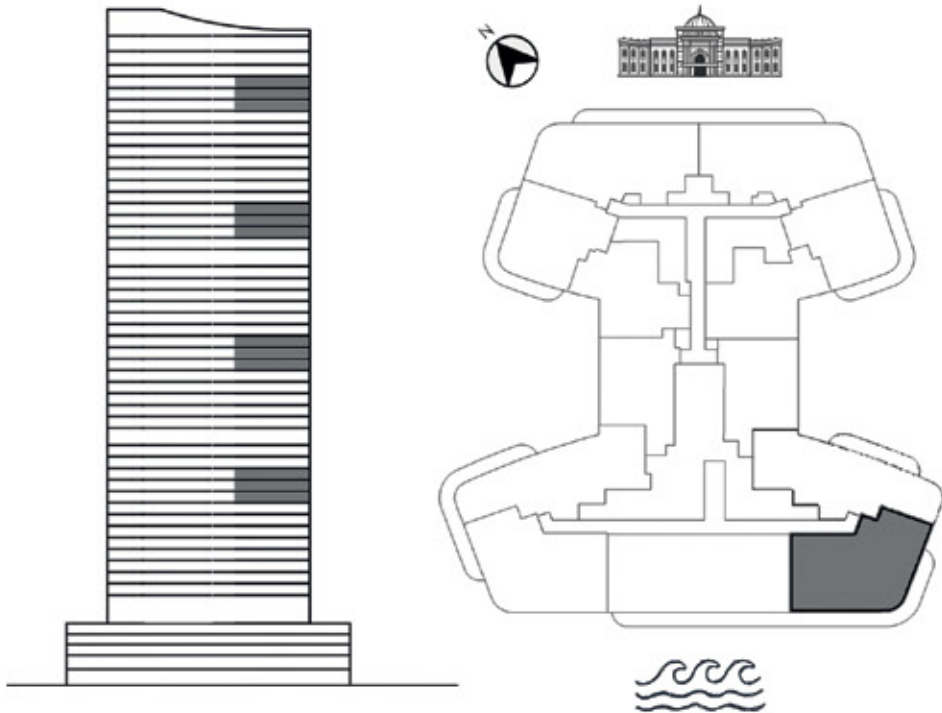
TYPE A-13

Units:12

3 Bedrooms

Located at floors:
10, 11, 12, 21, 22, 23, 32,
33, 34, 43, 44, 45

Average area:
2,848 ft² | 264.63m²



All stated areas and dimensions - including terrace areas - are indicative for illustration purposes and may vary by floor and unit location.

IT INCLUDES
7 PARKING LEVELS

THE TOWER HAS
55
FLOORS

IT OFFERS OVER
20,000+ SQ. FT.
OF RETAIL SPACE

THERE ARE
572
RESIDENTIAL UNITS

UNITS



UNIT TYPES

- 2/3/4 bedrooms
- 3/4 bedrooms + private garden at the podium level.
- 4 bedrooms duplex (Joud Villa) on the floor from 45 upwards.
- 5 bedrooms penthouse with private pool - BESPOKE.

AMENITIES

- Gymnasium, Sauna and Steam Room: two blocks, one dedicated for men and the other for women.
- Pool + Kids pool.
- Padel court.
- Running track.
- Kids' Play Area.
- Multipurpose hall.
- Café.
- Prayer rooms.
- Nursery.
- Retail on the ground floor.

OTHER FEATURES

- Controlled Delivery Circulation separate from the residents' circulation.
- 24/7 Concierge Service.
- Restricted Smart Access entry and exit for residents.
- Every unit is a smart home.
- Full Maintenance team onsite.

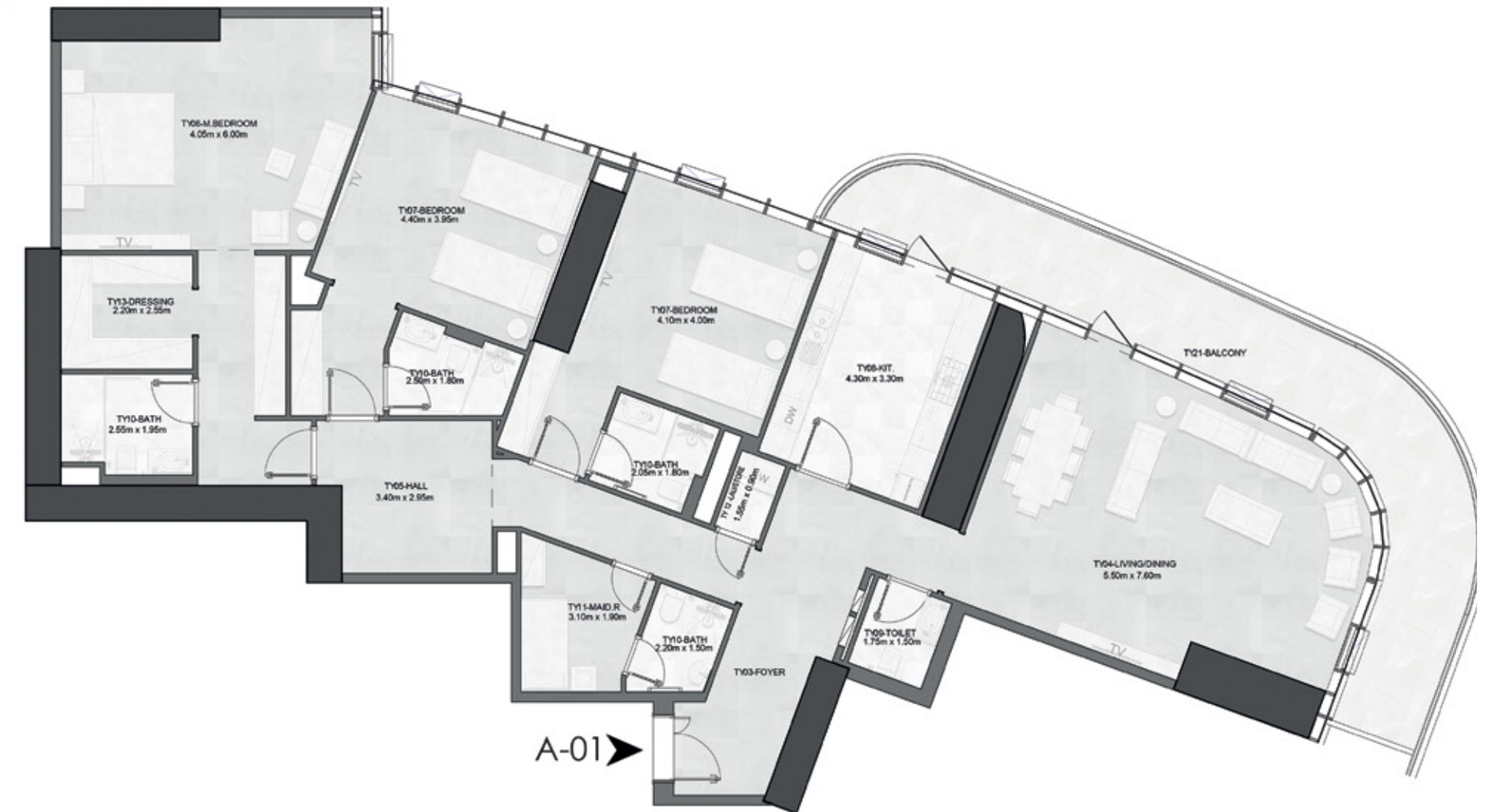
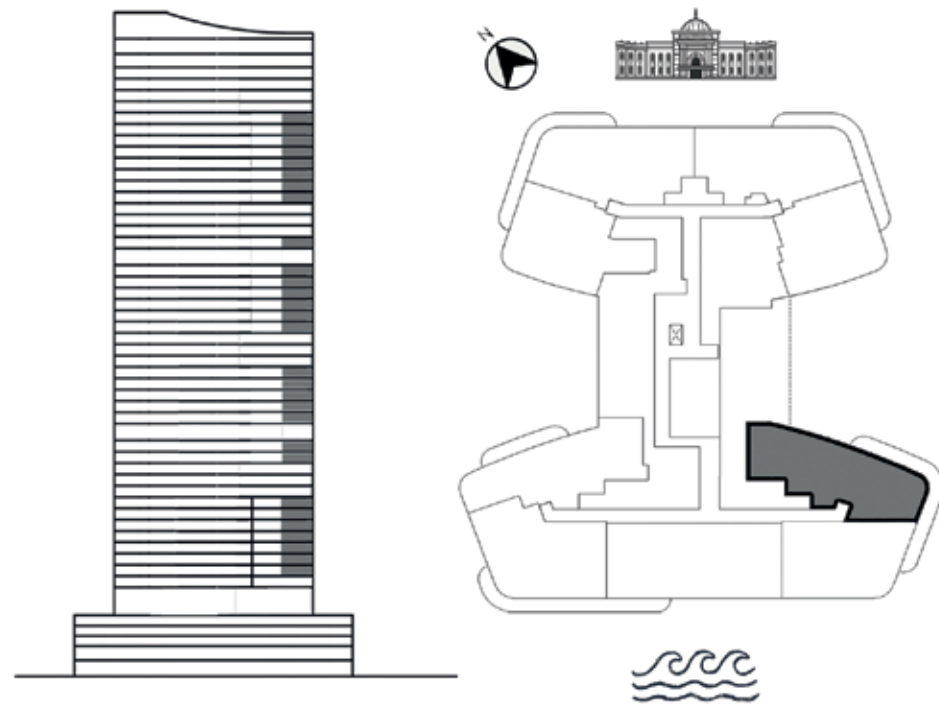
TYPE A-9

Units: 29

3 Bedrooms

Located at floors:
3, 4, 5, 6, 7, 8, 9 , 13, 14 16,
17, 18, 19, 20, 24, 25, 26,
27, 28, 29, 31, 35, 36, 37,
38, 39, 40, 41, 42

Average area:
2,778 ft² | 258.13m²



All stated areas and dimensions - including terrace areas - are indicative for illustration purposes and may vary by floor and unit location.



UNIQUE VIEWS

ENJOY UNPARALLELED VIEWS

Enjoy the views of Al Mamzar Lake and Al Khan Lake from sunrise to sunset, and then again when the city lights come alive.

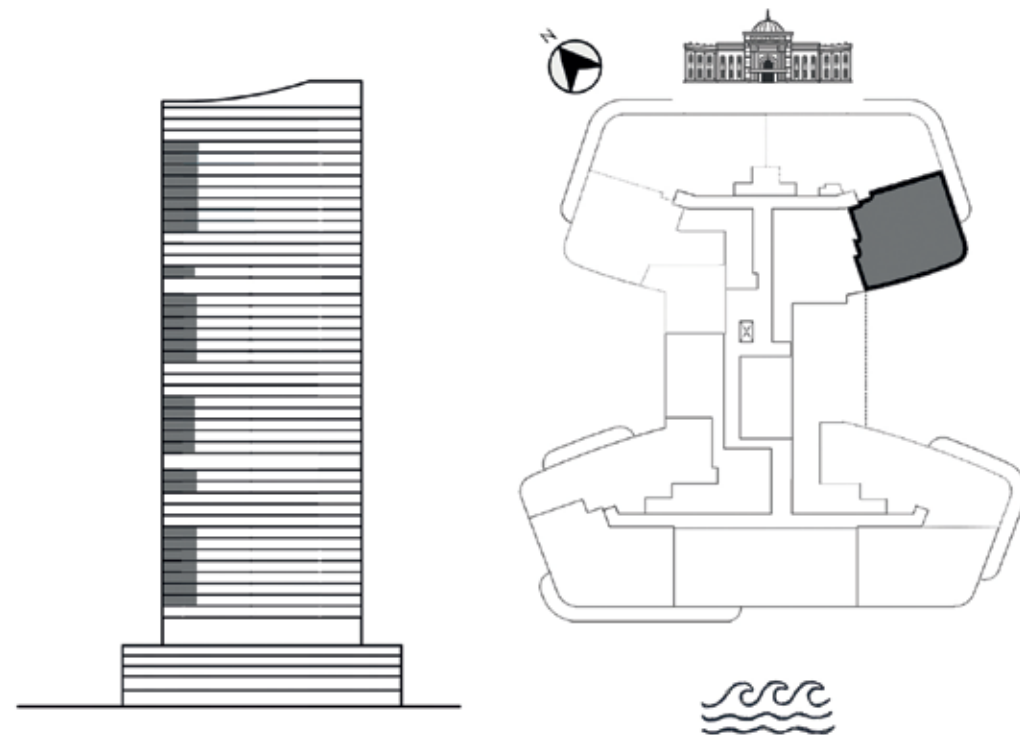
TYPE B-9

Units: 29

2 Bedrooms

Located at floors:
3, 4, 5, 6, 7, 8, 9, 13, 14, 16,
17, 18, 19, 20, 24, 25, 26,
27, 28, 29, 31, 35, 36, 37, 38,
39, 40, 41, 42

Average area:
1,821 ft² | 169.20m²



All stated areas and dimensions -
including terrace areas - are indicative for
illustration purposes and may vary by floor
and unit location.



ELEGANCE. STYLE.
PERFECTION.

Modern and stylish apartments fitted with the latest
appliances and wardrobes to ensure your complete comfort.

TYPE B-10

Units: 40

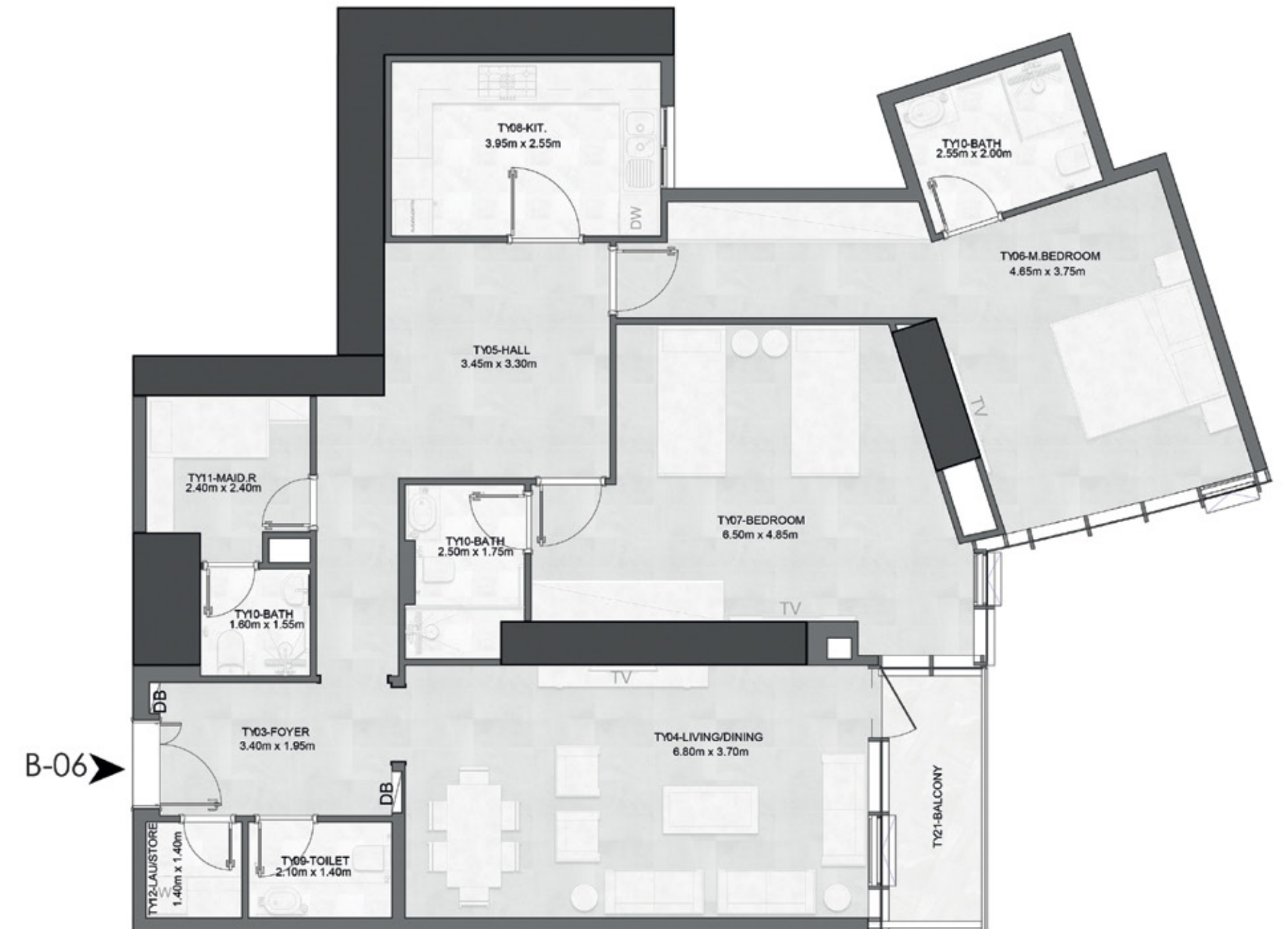
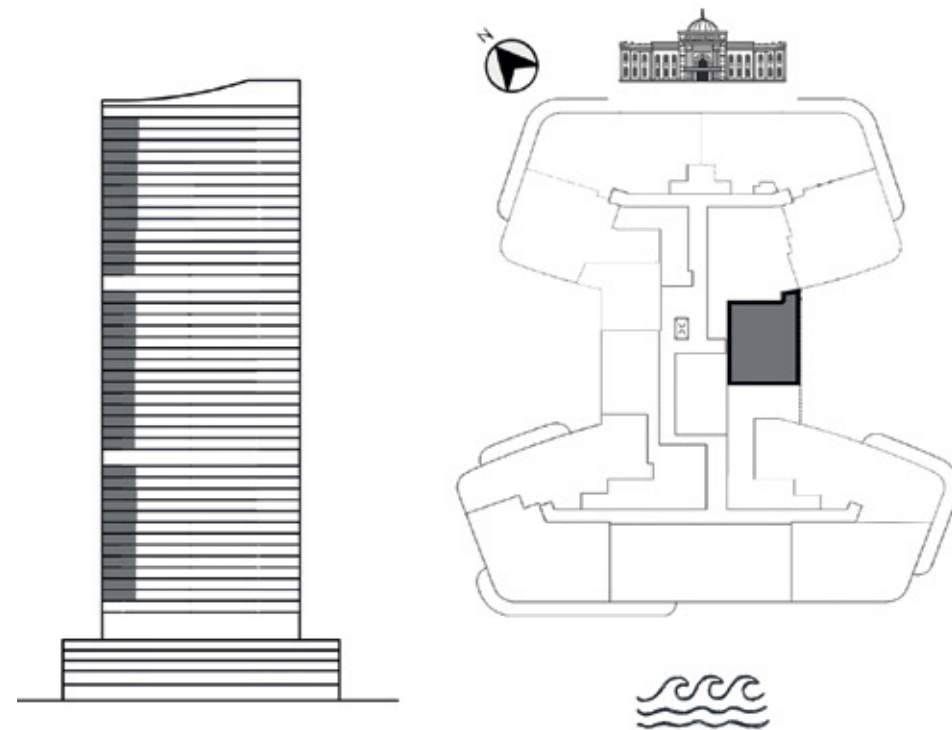
2 Bedrooms

Located at floors:

3, 4, 5, 6, 7, 8, 9, 10, 11, 12,
13, 14, 16, 17, 18, 19, 20,
21, 22, 23, 24, 25, 26, 27,
28, 29, 31, 32, 33, 34, 35,
36, 37, 38, 39, 40, 41, 42,
43, 44

Average area:

1,693 ft² | 157.26m²



All stated areas and dimensions - including terrace areas - are indicative for illustration purposes and may vary by floor and unit location.



YOUR HAVEN OF PEACE AND COMFORT

Smart apartments designed to be a haven of peace,
security and comfort for you and your loved ones.

TYPE B-11

Units: 40

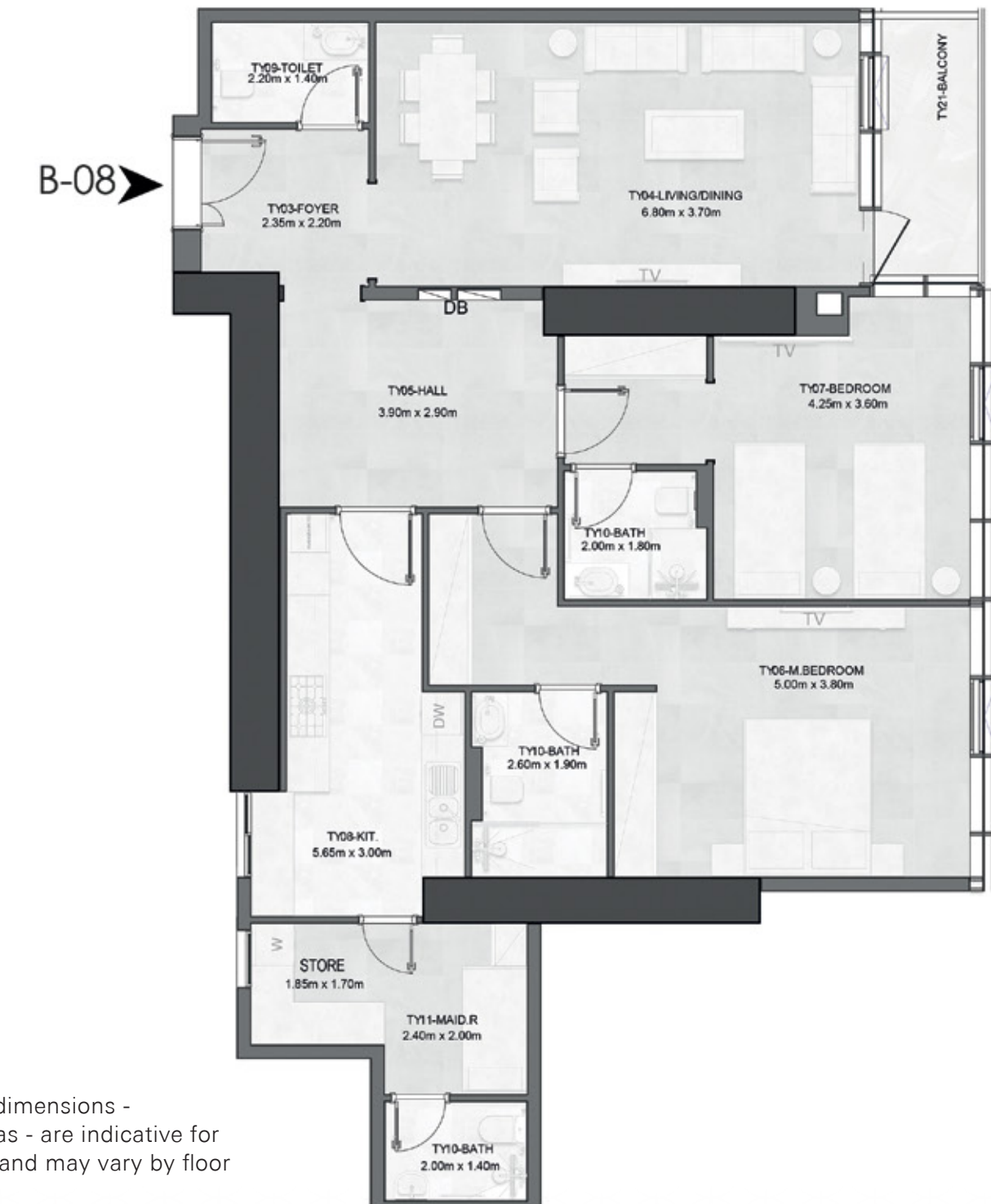
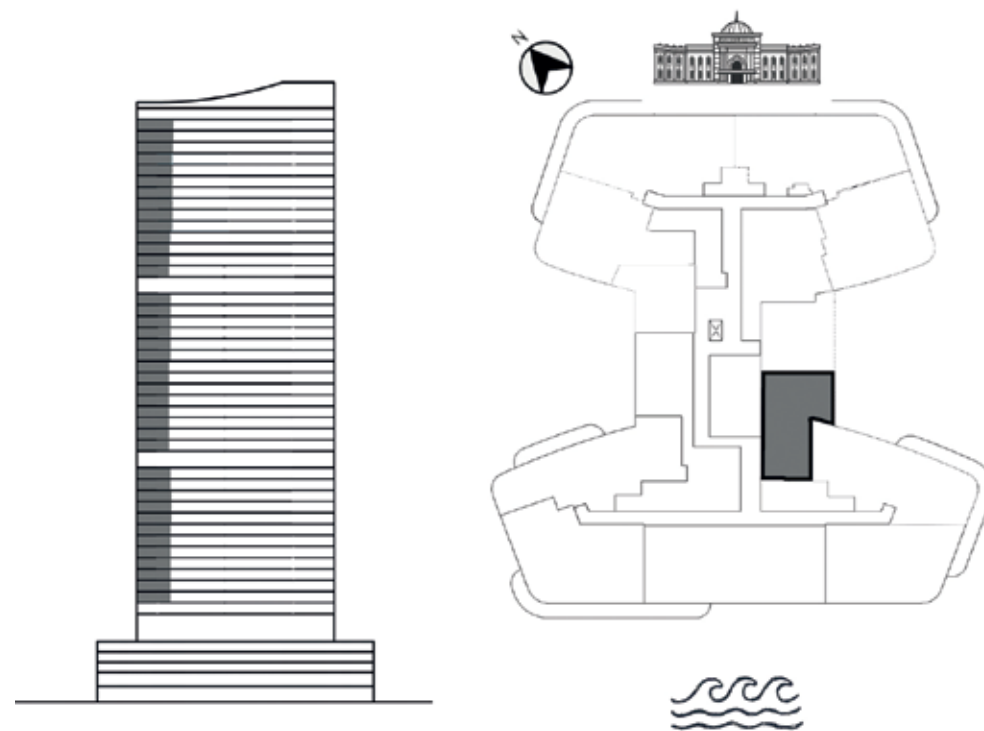
2 Bedrooms

Located at floors:

3, 4, 5, 6, 7, 8, 9, 10, 11, 12,
13, 14, 16, 17, 18, 19, 20, 21,
22, 23, 24, 25,, 26, 27, 28,
29, 31, 32, 33, 34, 35, 36, 37,
38, 39, 40, 41, 42, 43, 44

Average area:

1,547 ft² | 143.74m²



All stated areas and dimensions - including terrace areas - are indicative for illustration purposes and may vary by floor and unit location.



PENTHOUSE

ELEGANT. STUNNING. PERFECT.

5-bedroom apartments with private pools, designed with separate areas for families and guests.

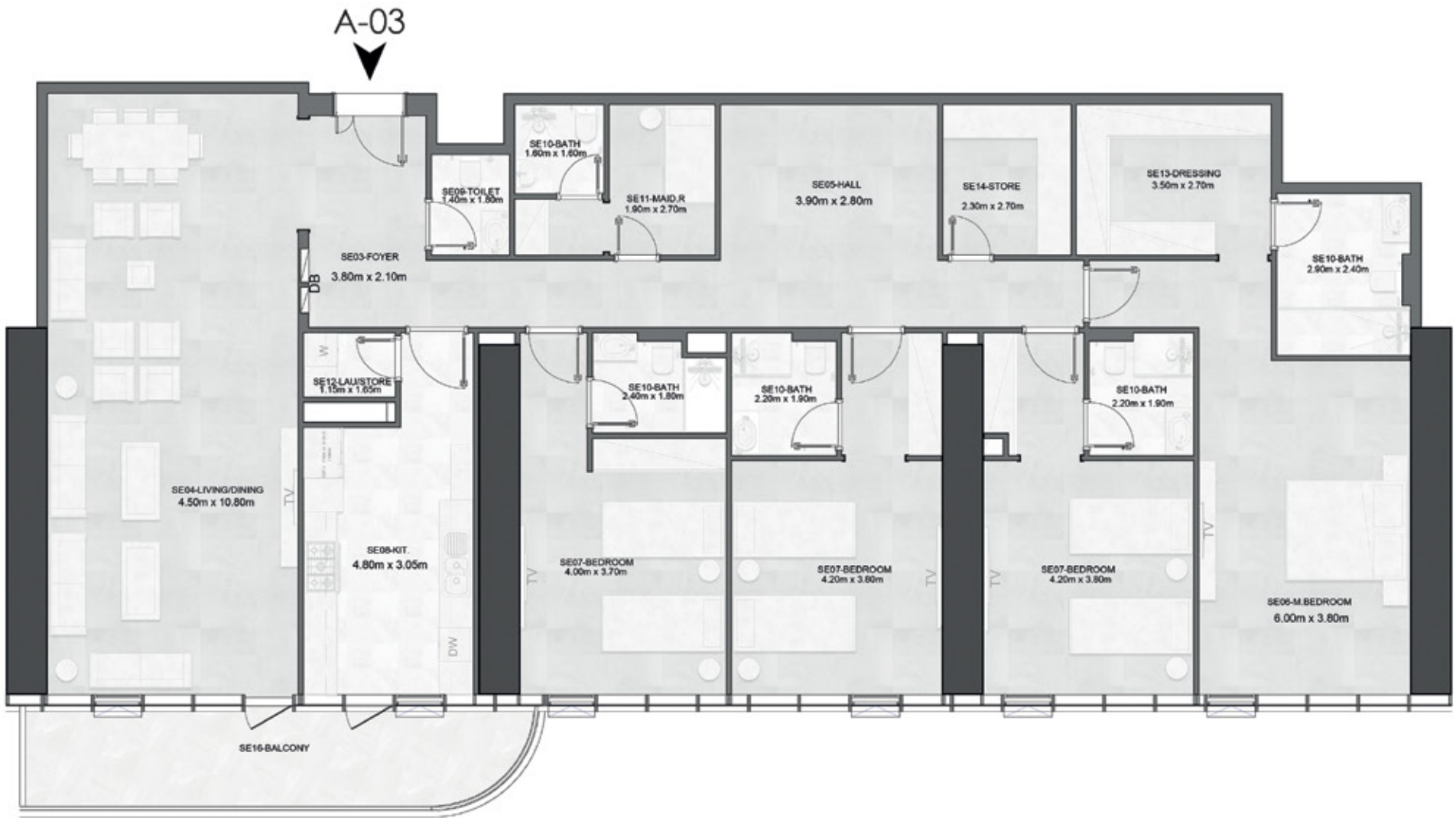
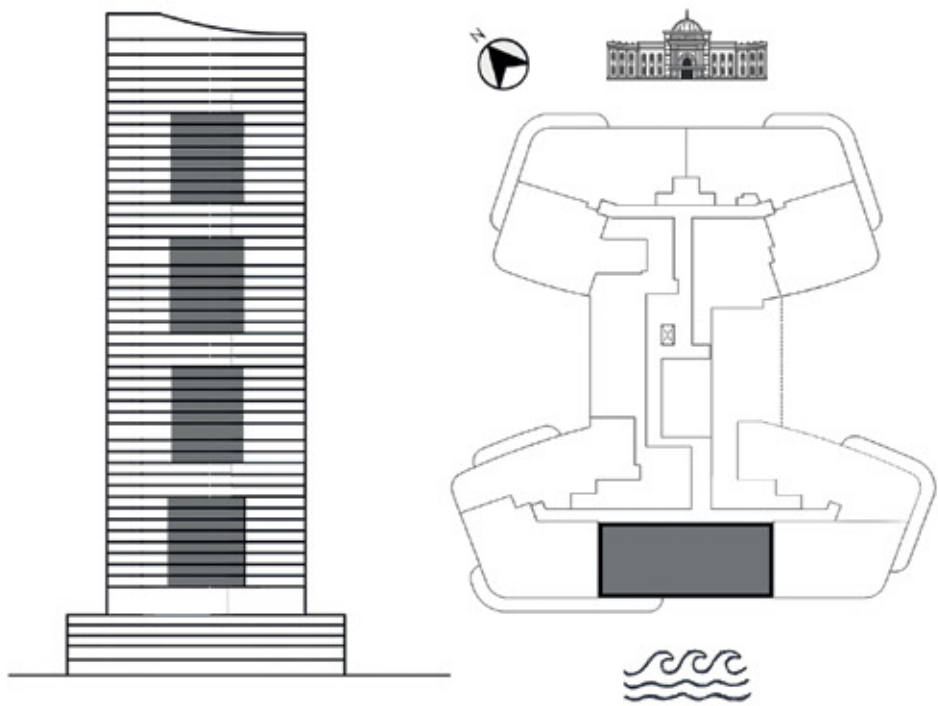
TYPE A-6

Units: 32

4 Bedrooms

Located at floors:
2, 3, 4, 5, 6, 7, 8, 9, 13, 14,
15, 16, 17, 18, 19, 20, 24, 25,
26, 27, 28, 29, 30, 31, 35, 36,
37, 38, 39, 40, 41, 42

Average area:
3,092 ft² | 287.22m²



All stated areas and dimensions - including terrace areas - are indicative for illustration purposes and may vary by floor and unit location.



RETURN TO A HOME OF UNMATCHED LUXURY

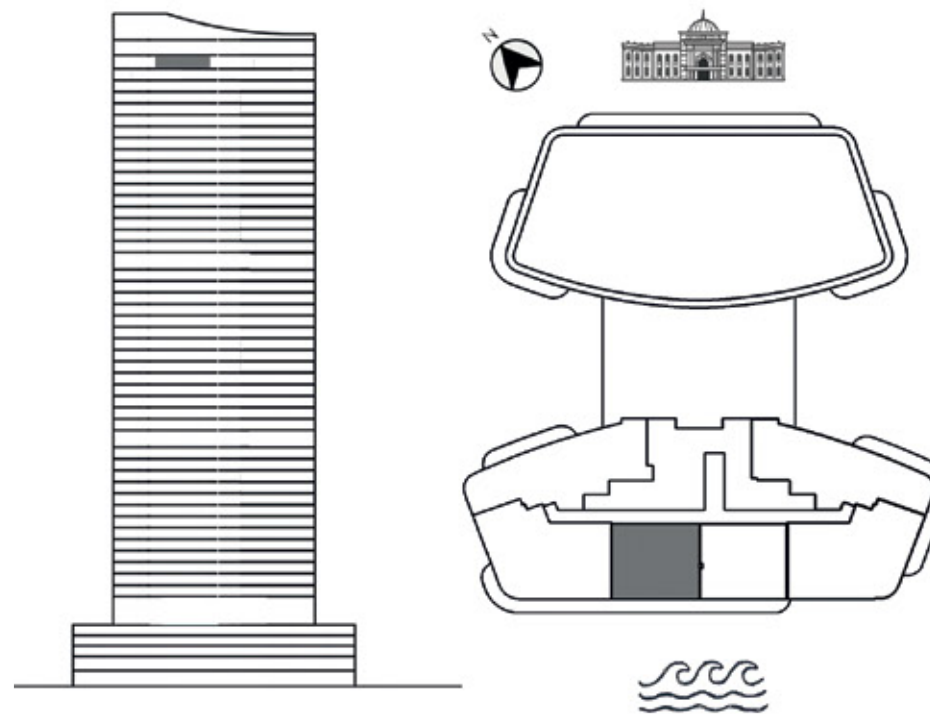
PRICELESS VIEWS

Enjoy the breathtaking views of Al Mamzar Lake and Al Khan Lake from sunrise to sunset and at midnight, when the city comes alive with lights.

TYPE A-30

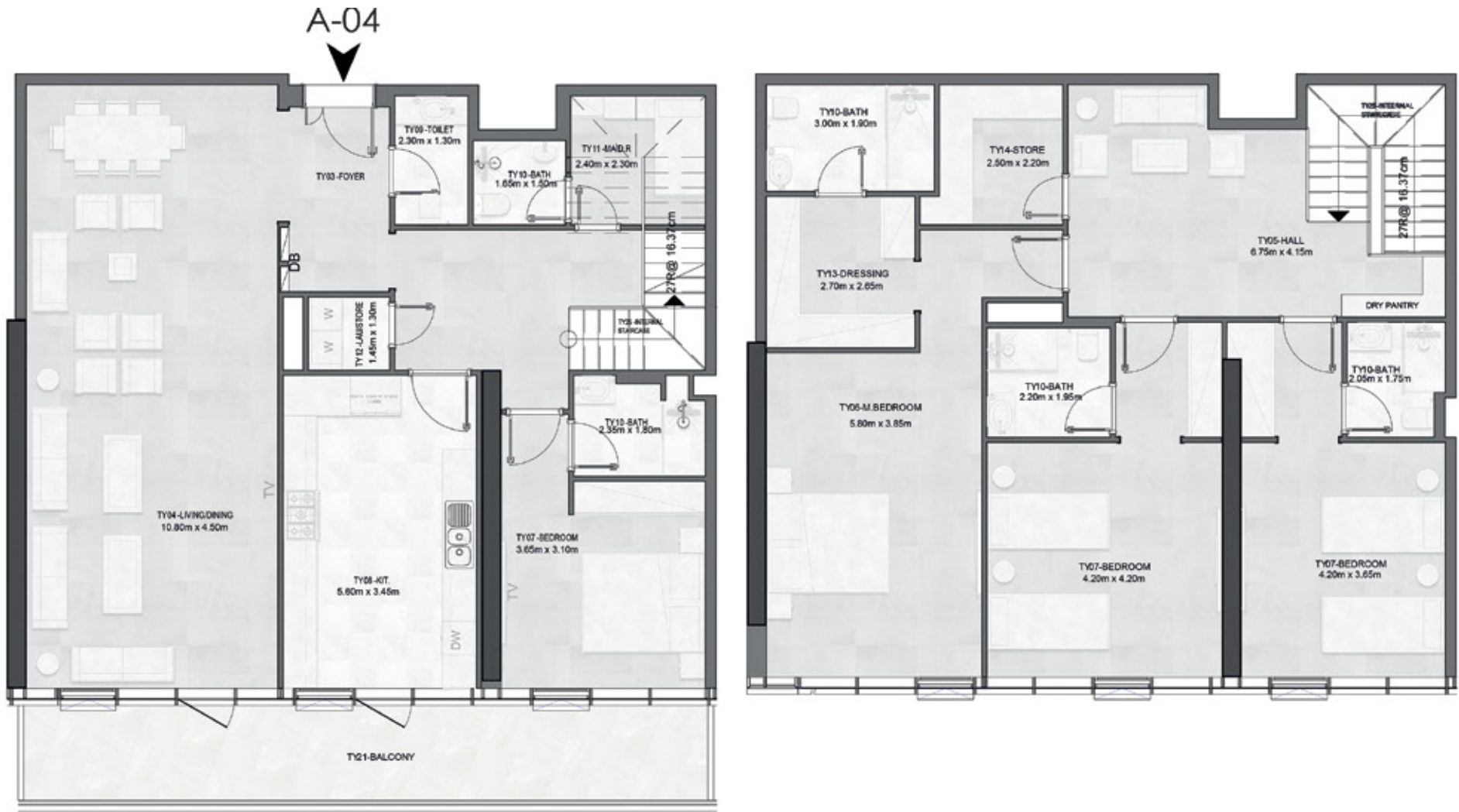
Unit: 1

Duplex
(Joud Villa)



Located at floors no 2nd - 47

Average area:
3,180 ft² | 295.39m²



All stated areas and dimensions - including terrace areas - are indicative for illustration purposes and may vary by floor and unit location.



INTEGRATED NEARBY SERVICES

Enjoy commercial facilities at your doorstep with over 20,000 square feet of retail space.

