

205 TOWERS

AN ARKAN PALM DEVELOPMENT










STRATEGIC BRILLIANCE

Master planned by the world-renowned Gensler, 205 reimagines urban living through a harmonious blend of residential, commercial, and leisure districts—each with its own identity, yet all flowing as one. Like a living tapestry, the masterplan weaves diverse experiences into a unified, walkable destination. At the heart of it all, a 2 km river flows through the development, linking communities, cooling the air, and setting the stage for scenic F&B spots along its banks. With multiple access points and intuitively designed public spaces, 205 invites movement, connection, and discovery at every turn.

-  NORTH TOWER
-  EAST TOWER
-  WEST TOWER



205 TOWERS
MASTERPLAN

-  NORTH TOWER
-  EAST TOWER
-  WEST TOWER





SERVICED BY
INTERCONTINENTAL



INTERCONTINENTAL
205 - WEST CAIRO





INTERIOR DESIGN

DESIGN THAT
SPEAKS VOLUMES



Duplex Reception Concept

Disclaimer: All pictures, plans, layouts, information, data and details included in this brochure are indicative only and may change at any time up to the final 'as built' status in accordance with final designs of the project, regulatory approvals and planning permissions. All accessories and interior finishes such as wallpaper, chandeliers, furniture, electronics, white goods, curtains, hard and soft landscaping, pavements, features, gym, swimming pool(s) and other elements displayed in the brochure, or within the show apartment or between the plot boundary and the unit, are not part of the unit and are shown for illustrative purposes only.



Dining Room Concept

Disclaimer: All pictures, plans, layouts, information, data and details included in this brochure are indicative only and may change at any time up to the final 'as built' status in accordance with final designs of the project, regulatory approvals and planning permissions. All accessories and interior finishes such as wallpaper, chandeliers, furniture, electronics, white goods, curtains, hard and soft landscaping, pavements, features, gym, swimming pool(s) and other elements displayed in the brochure, or within the show apartment or between the plot boundary and the unit, are not part of the unit and are shown for illustrative purposes only.



Corner Reception Concept

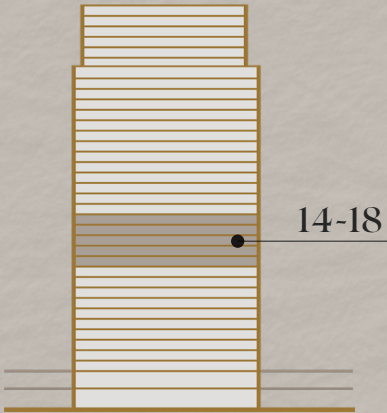
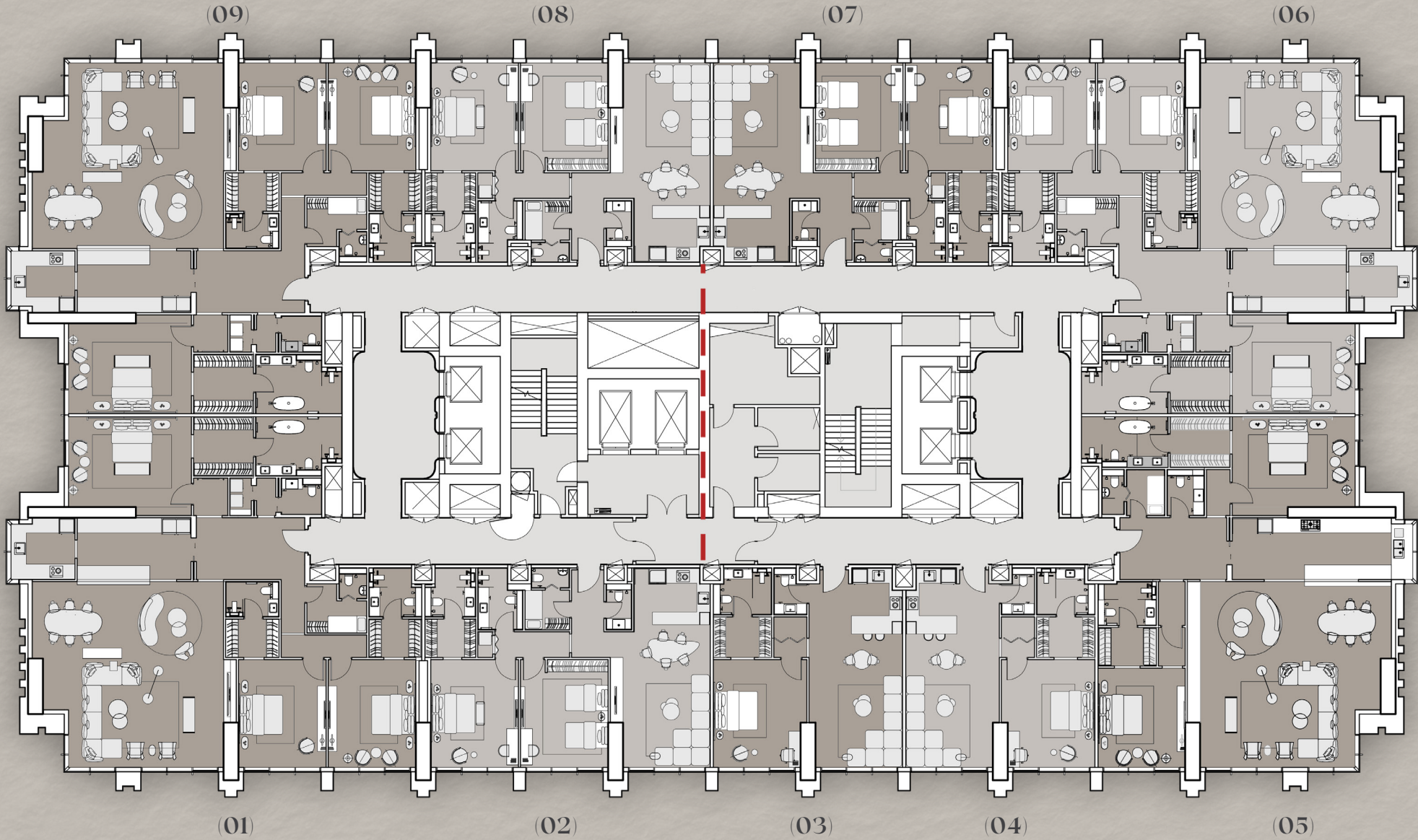
Disclaimer: All pictures, plans, layouts, information, data and details included in this brochure are indicative only and may change at any time up to the final 'as built' status in accordance with final designs of the project, regulatory approvals and planning permissions. All accessories and interior finishes such as wallpaper, chandeliers, furniture, electronics, white goods, curtains, hard and soft landscaping, pavements, features, gym, swimming pool(s) and other elements displayed in the brochure, or within the show apartment or between the plot boundary and the unit, are not part of the unit and are shown for illustrative purposes only.



Bedroom Concept

Disclaimer: All pictures, plans, layouts, information, data and details included in this brochure are indicative only and may change at any time up to the final 'as built' status in accordance with final designs of the project, regulatory approvals and planning permissions. All accessories and interior finishes such as wallpaper, chandeliers, furniture, electronics, white goods, curtains, hard and soft landscaping, pavements, features, gym, swimming pool(s) and other elements displayed in the brochure, or within the show apartment or between the plot boundary and the unit, are not part of the unit and are shown for illustrative purposes only.

205 TOWERS FLOOR PLATES



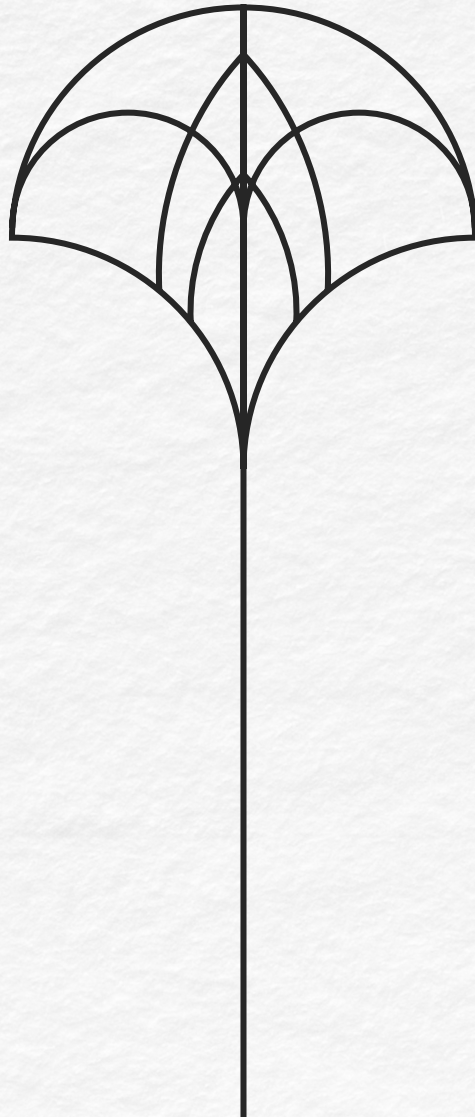
DISCLAIMER:

The visuals, plans, layouts, data, and other information presented in this brochure are for illustrative purposes only and are subject to modification until the project reaches its final 'as-built' stage.

FEATURES

1 BEDROOM APARTMENT

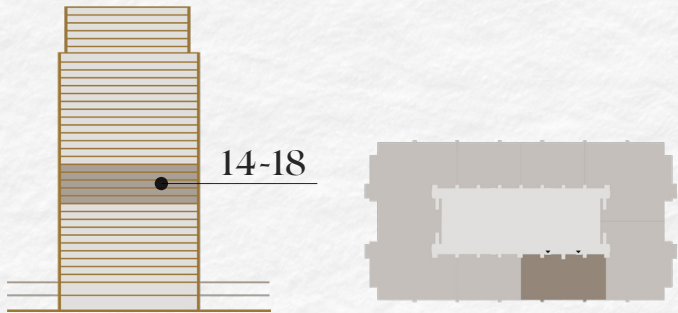
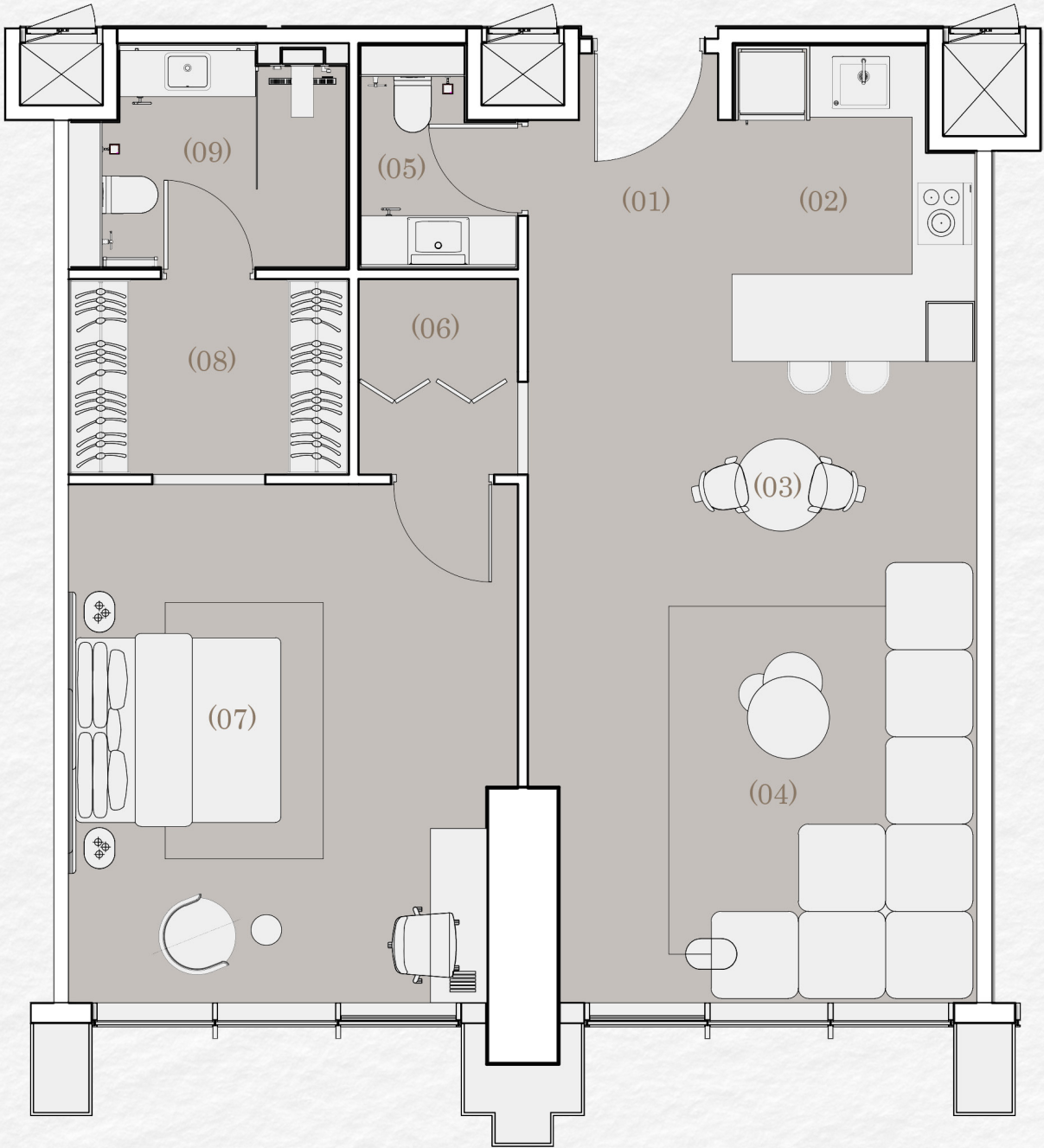
Experience refined urban living in our spacious one-bedroom residences, featuring a beautifully appointed master bedroom, walk-in closet, and expansive living area. Each home includes a laundry room, dedicated basement storage, and parking spaces.



I BEDROOM APARTMENT

UNIT AREA 125 SQM

01	Entrance Lobby	1.8m x 1.5m
02	Open Kitchen	2.4m x 3.1m
03	Dining Space	4.4m x 1.6m
04	Living Space	4.4m x 6.3m
05	Powder Room	1.5m x 2.1m
06	Closet	1.5m x 1.9m
07	Master Bedroom	4.1m x 5.0m
08	Dressing Room	2.7m x 1.9m
09	Master Bathroom	2.4m x 2.2m



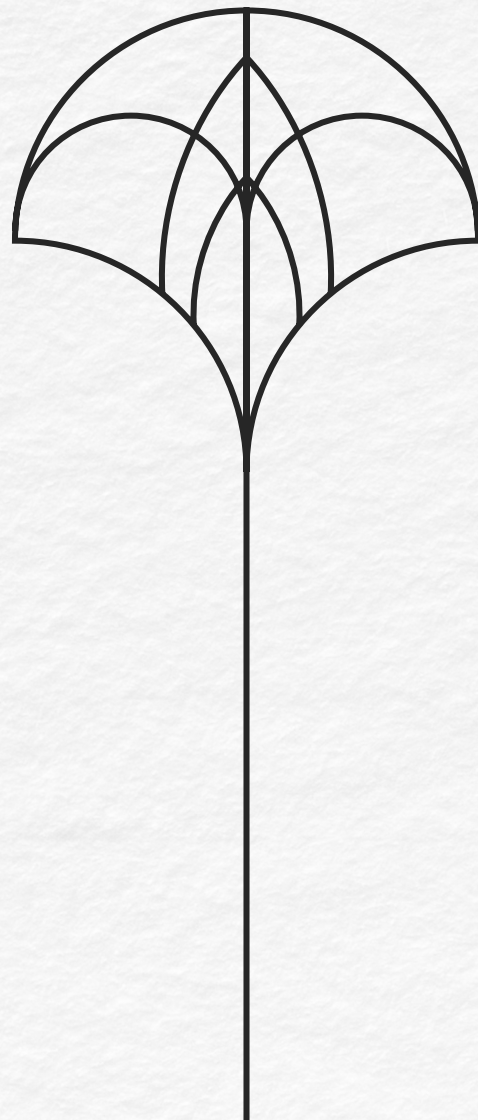
DISCLAIMER:

The visuals, plans, layouts, data, and other information presented in this brochure are for illustrative purposes only and are subject to modification until the project reaches its final 'as-built' stage.

APARTMENT FEATURES

2 BEDROOM
APARTMENT

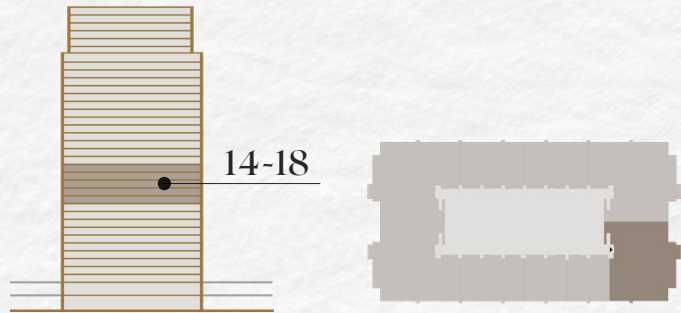
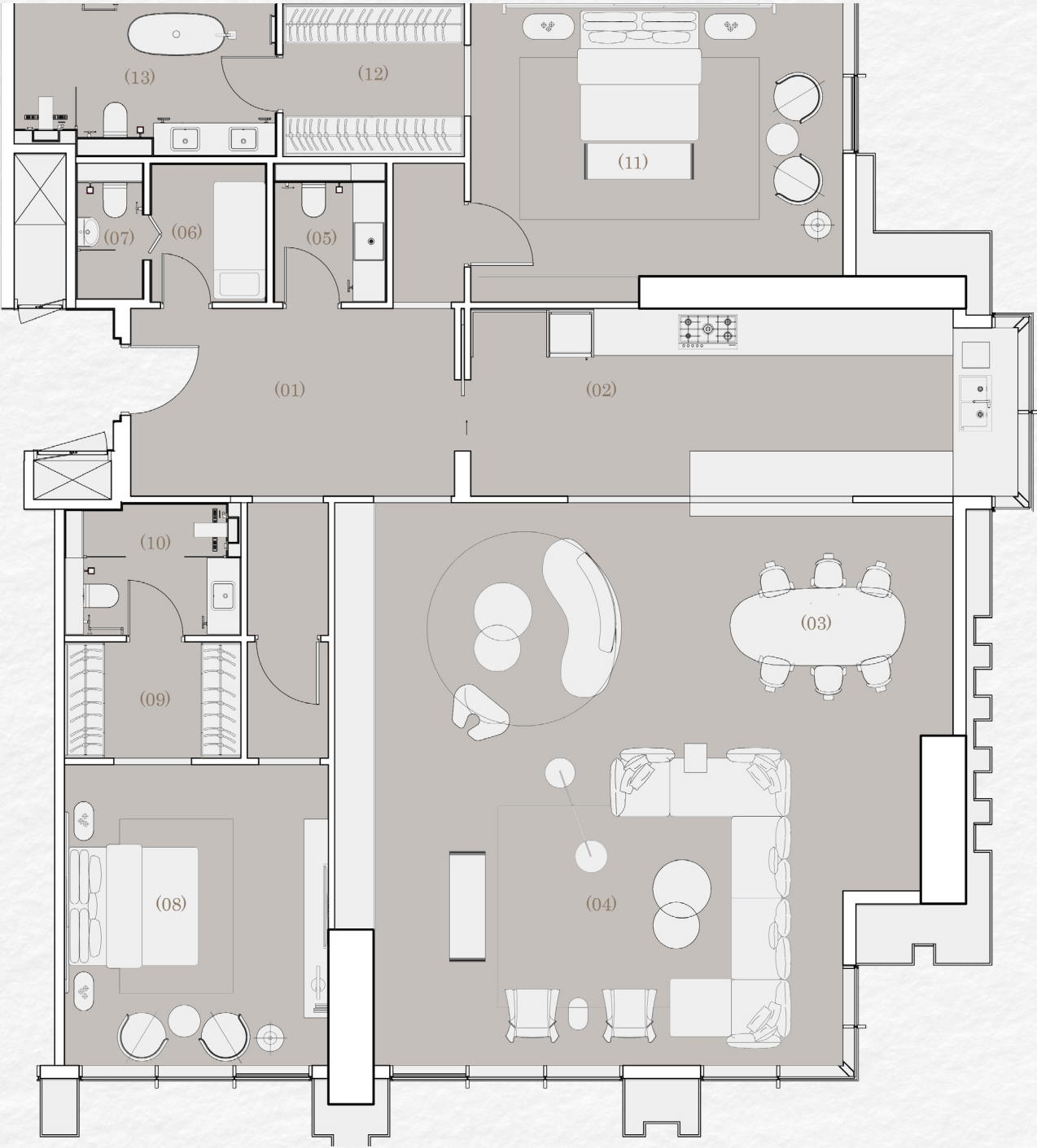
Occupying privileged corner positions, these select two-bedroom residences offer enhanced privacy and breathtaking vistas. All bedrooms feature en-suite bathrooms, with separate laundry and storage areas, and expansive living spaces designed for both everyday comfort and elegant entertainment. Each residence also includes two dedicated parking spaces, ensuring added convenience for residents.



2 BEDROOM APARTMENT

UNIT AREA 325 SQM

01	Entrance Lobby	2.9m x 5.0m	08	Master Bedroom	4.0m x 4.6m
02	Open Kitchen	2.9m x 7.5m	09	Dressing Room	2.6m x 1.8m
03	Dining Space	4.0m x 3.6m	10	Master Bathroom	2.7m x 2.0m
04	Living Space	9.5m x 8.7m	11	Master Bedroom	5.7m x 4.2m
05	Powder Room	1.7m x 2.1m	12	Dressing Room	2.4m x 2.8m
06	Nanny's Room	1.8m x 2.1m	13	Master Bathroom	4.0m x 2.3m
07	Nanny's Bathroom	1.1m x 2.1m			



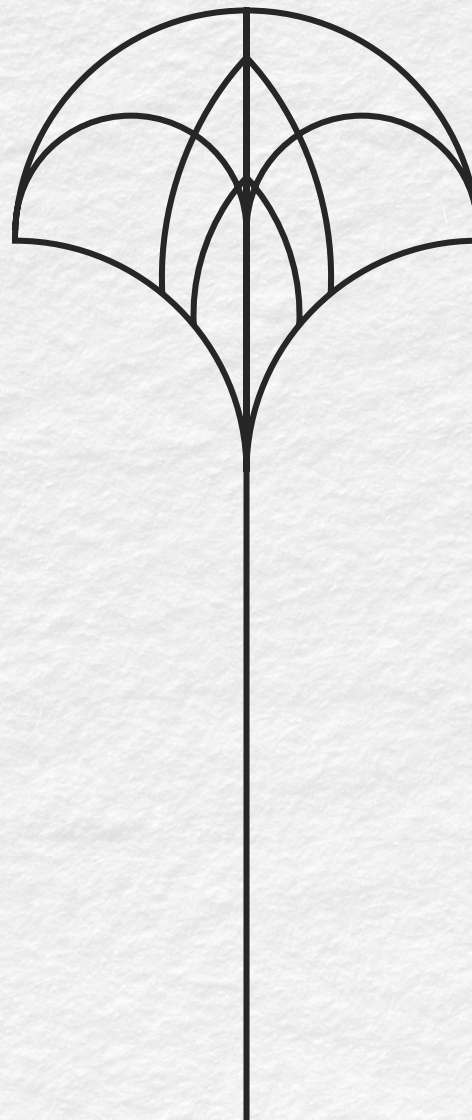
DISCLAIMER:

The visuals, plans, layouts, data, and other information presented in this brochure are for illustrative purposes only and are subject to modification until the project reaches its final 'as-built' stage.

APARTMENT FEATURES

2 BEDROOM APARTMENT

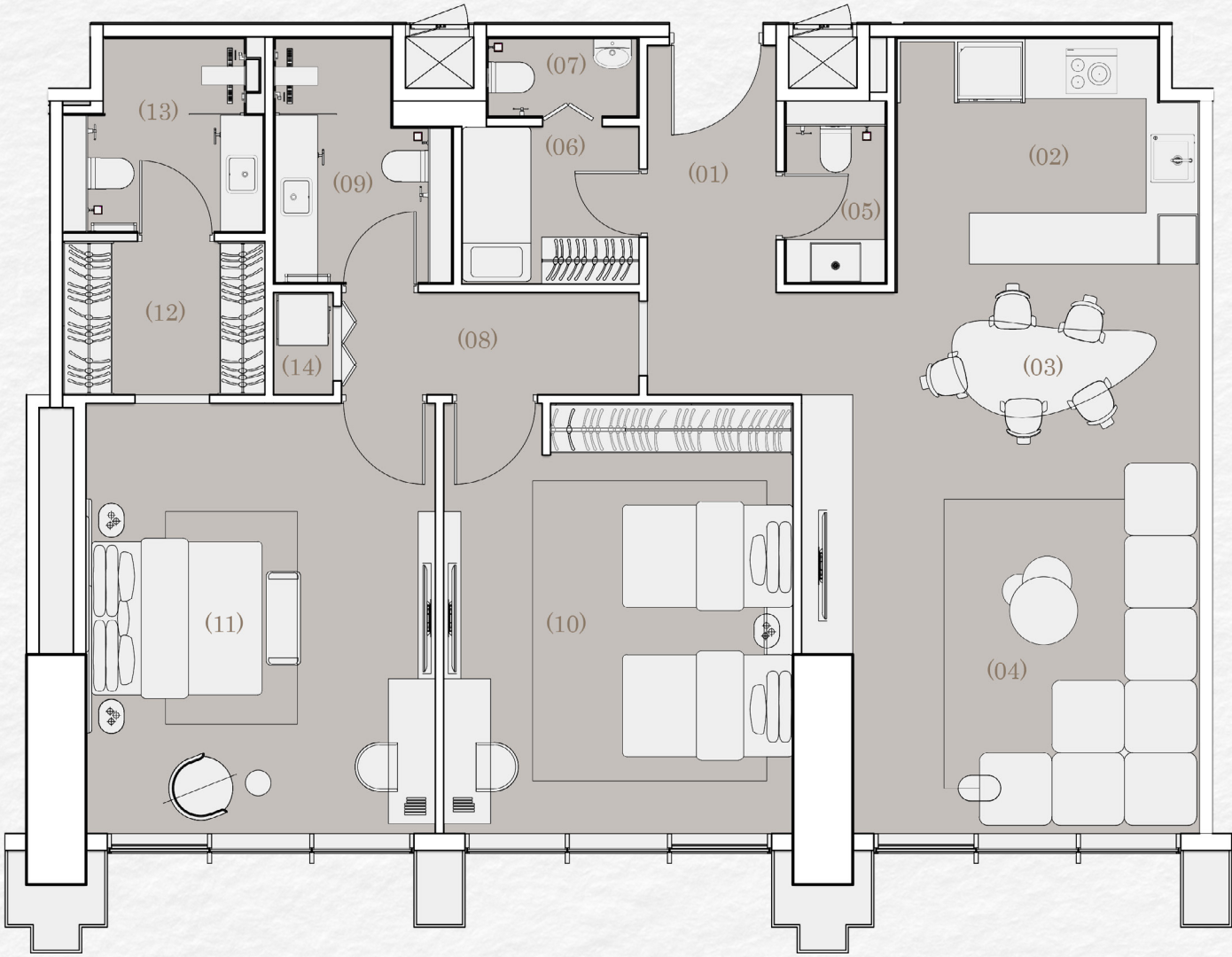
Discover family comfort redefined in our two-bedroom middle residences, featuring a dedicated nanny's room with bathroom and generous storage solutions. With two parking spaces and thoughtfully designed living areas, these homes balance sophisticated style with practical family needs.



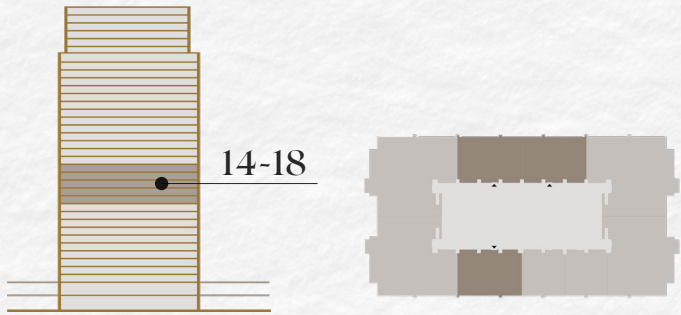
2 BEDROOM APARTMENT

UNIT AREA 187 SQM

01	Entrance Lobby	1.5m x 4.1m	08	Lobby	3.5m x 1.2m
02	Open Kitchen	3.6m x 3.0m	09	Bathroom	1.8m x 2.8m
03	Dining Space	4.7m x 2.7m	10	Bedroom	4.1m x 5.0m
04	Living Space	4.7m x 6.3m	11	Master Bedroom	5.0m x 4.1m
05	Powder Room	1.3m x 2.1m	12	Dressing Room	2.4m x 1.8m
06	Nanny's Room	2.0m x 1.8m	13	Master Bathroom	2.3m x 2.3m
07	Nanny's Bathroom	1.8m x 0.9m	14	Closet	0.7m x 1.2m



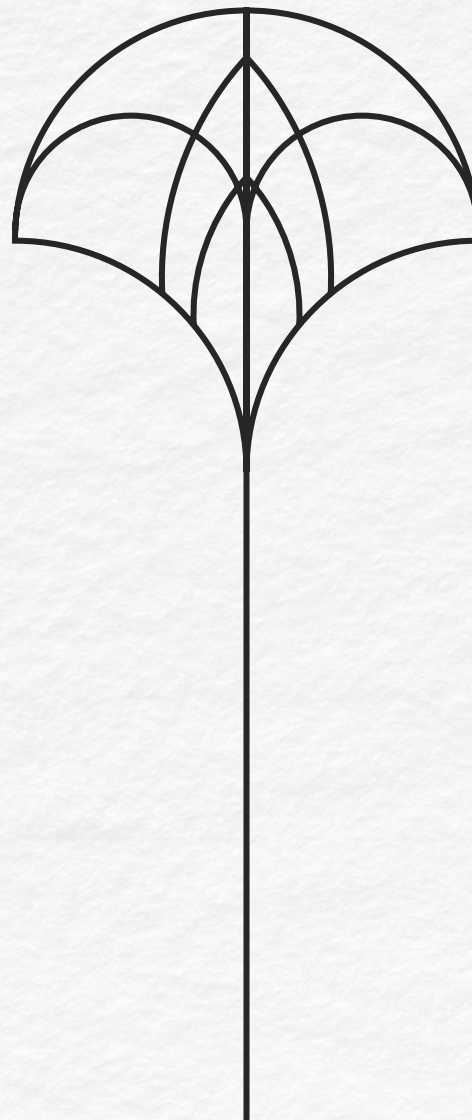
DISCLAIMER:
The visuals, plans, layouts, data, and other information presented in this brochure are for illustrative purposes only and are subject to modification until the project reaches its final 'as-built' stage.



APARTMENT FEATURES

3 BEDROOM APARTMENT

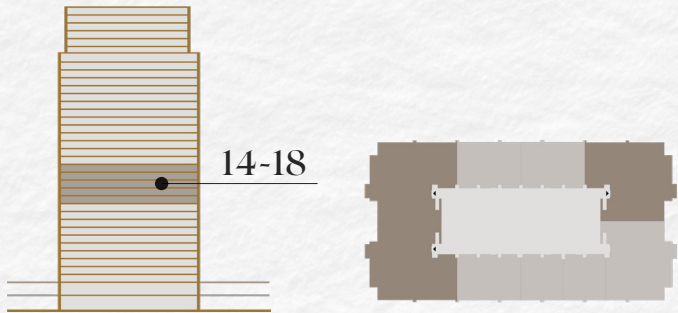
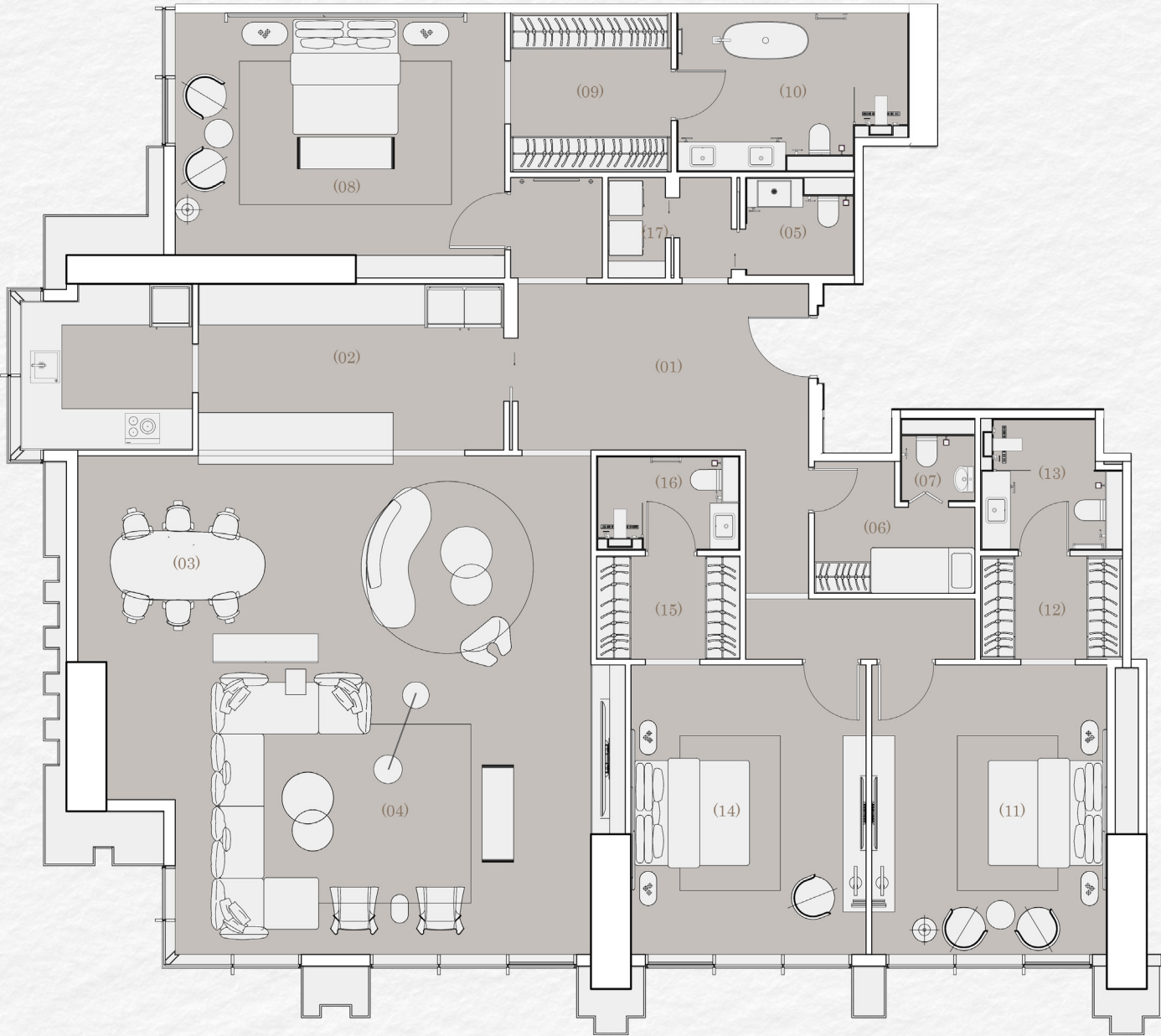
Occupying privileged corner positions, these select three-bedroom residences offer enhanced privacy and breathtaking vistas. All bedrooms feature en-suite bathrooms, including spacious master suites, along with separate laundry and storage areas. Expansive living spaces are thoughtfully designed for both everyday comfort and elegant entertainment. Each residence also includes three dedicated parking spaces, providing added convenience for residents.



3 BEDROOM APARTMENT

UNIT AREA 387 SQM

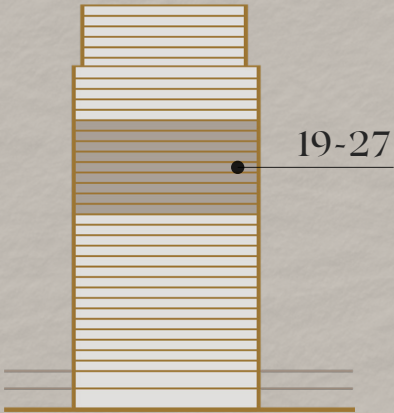
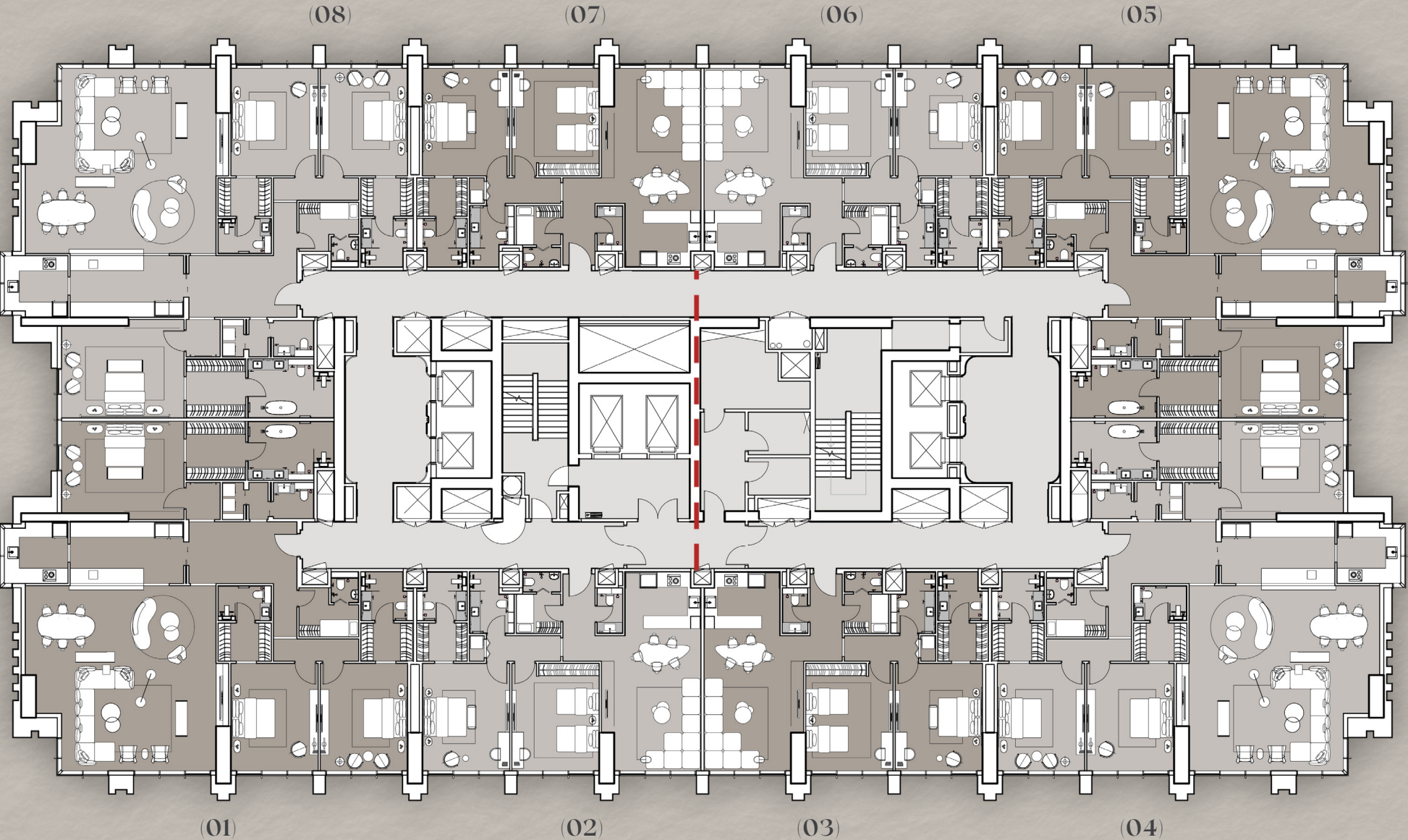
01	Entrance Lobby	5.0m x 2.9m	10	Master Bathroom	4.0m x 2.7m
02	Open Kitchen	8.5m x 2.9m	11	Master Bedroom	4.0m x 5.0m
03	Dining Space	4.0m x 3.6m	12	Dressing Room	2.5m x 1.8m
04	Living Space	9.0m x 8.7m	13	Master Bathroom	2.4m x 1.6m
05	Powder Room	1.8m x 1.8m	14	Master Bedroom	4.0m x 5.0m
06	Nanny's Room	2.8m x 2.3m	15	Dressing Room	2.5m x 1.8m
07	Nanny's Bathroom	1.3m x 1.4m	16	Master Bathroom	2.1m x 2.3m
08	Master Bedroom	5.7m x 4.2m	17	Closet	1.0m x 1.7m
09	Dressing Room	2.8m x 2.7m			



DISCLAIMER:
The visuals, plans, layouts, data, and other information presented in this brochure are for illustrative purposes only and are subject to modification until the project reaches its final 'as-built' stage.

205 TOWERS

FLOOR PLATES



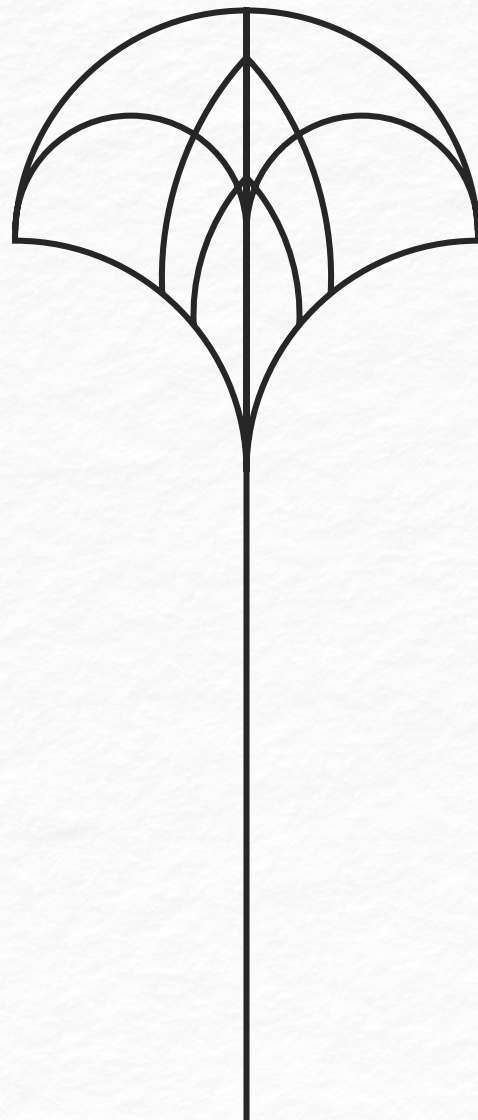
DISCLAIMER:

The visuals, plans, layouts, data, and other information presented in this brochure are for illustrative purposes only and are subject to modification until the project reaches its final 'as-built' stage.

APARTMENT FEATURES

2 BEDROOM APARTMENT

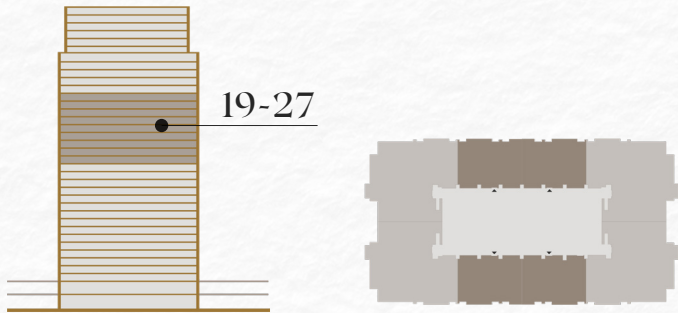
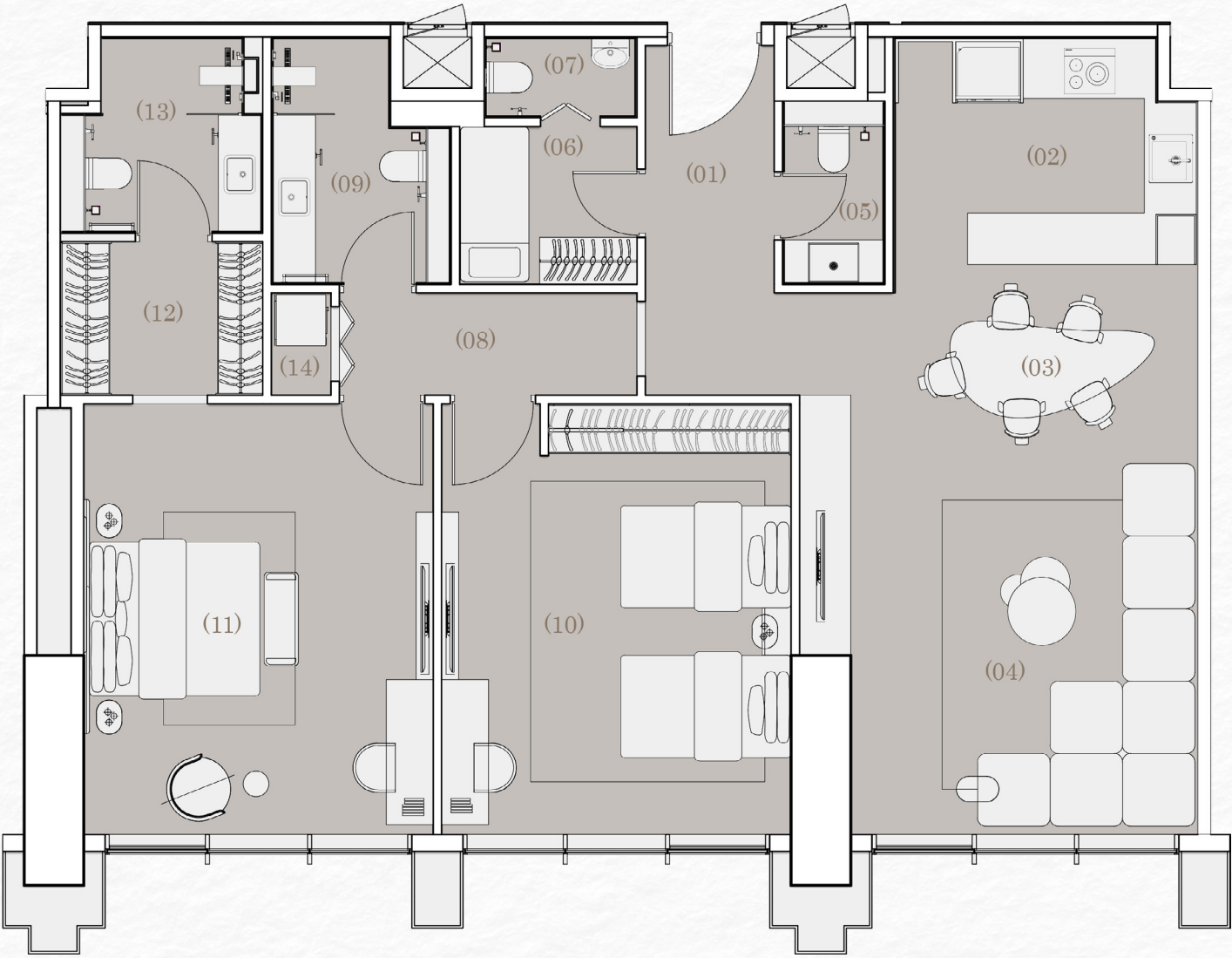
Discover family comfort redefined in our two-bedroom middle residences, featuring a dedicated nanny's room with bathroom and generous storage solutions. With two parking spaces and thoughtfully designed living areas, these homes balance sophisticated style with practical family needs.



2 BEDROOM APARTMENT

UNIT AREA 187 SQM

01	Entrance Lobby	1.5m x 4.1m	08	Lobby	3.5m x 1.2m
02	Open Kitchen	3.6m x 3.0m	09	Bathroom	1.8m x 2.8m
03	Dining Space	4.7m x 2.7m	10	Bedroom	4.1m x 5.0m
04	Living Space	4.7m x 6.3m	11	Master Bedroom	5.0m x 4.1m
05	Powder Room	1.3m x 2.1m	12	Dressing Room	2.4m x 1.8m
06	Nanny's Room	2.0m x 1.8m	13	Master Bathroom	2.3m x 2.3m
07	Nanny's Bathroom	1.8m x 0.9m	14	Closet	0.7m x 1.2m

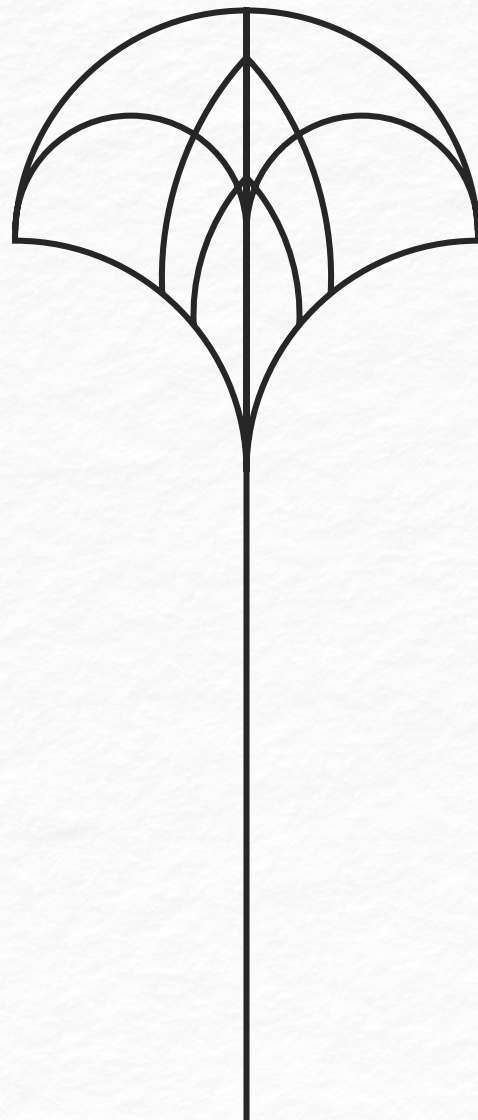


DISCLAIMER:
The visuals, plans, layouts, data, and other information presented in this brochure are for illustrative purposes only and are subject to modification until the project reaches its final 'as-built' stage.

APARTMENT FEATURES

3 BEDROOM
APARTMENT

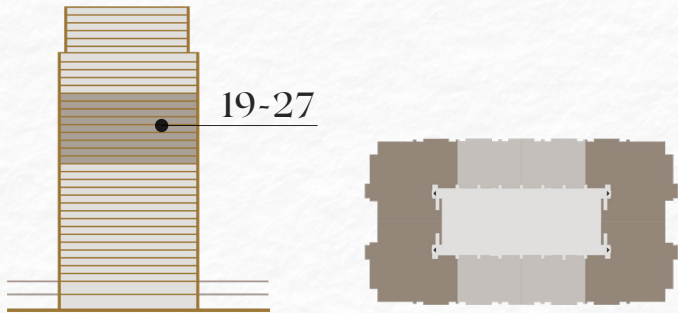
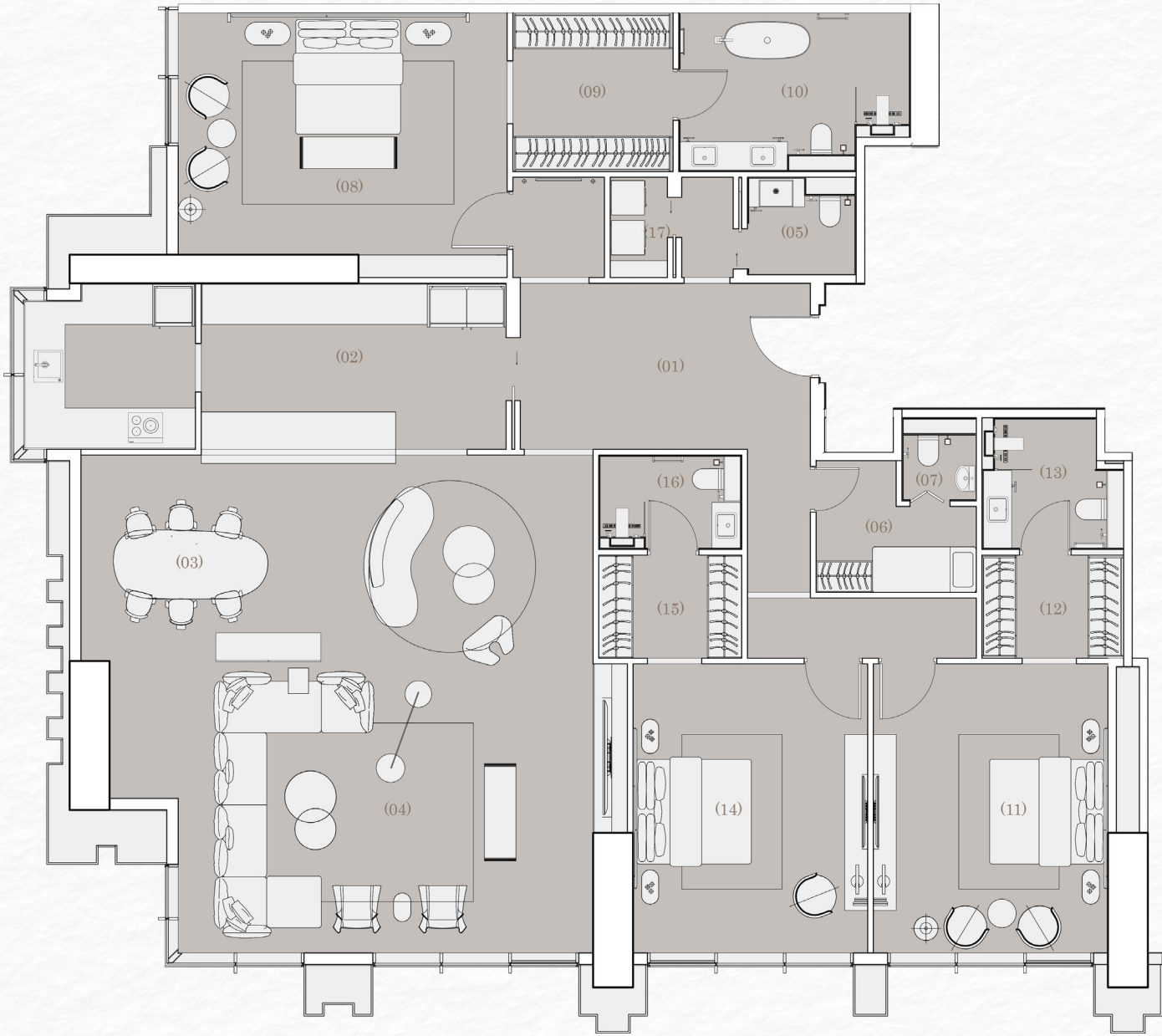
Occupying privileged corner positions, these select three-bedroom residences offer enhanced privacy and breathtaking vistas. All bedrooms feature en-suite bathrooms, including master bedrooms, along with separate laundry and storage areas. Expansive living spaces are designed for both everyday comfort and elegant entertainment. Each residence also offers three dedicated parking spaces, ensuring convenience for residents.



3 BEDROOM APARTMENT

UNIT AREA 387 SQM

01	Entrance Lobby	5.0m x 2.9m	10	Master Bathroom	4.0m x 2.7m
02	Open Kitchen	8.5m x 2.9m	11	Master Bedroom	4.0m x 5.0m
03	Dining Space	4.0m x 3.6m	12	Dressing Room	2.5m x 1.8m
04	Living Space	9.0m x 8.7m	13	Master Bathroom	2.4m x 1.6m
05	Powder Room	1.8m x 1.8m	14	Master Bedroom	4.0m x 5.0m
06	Nanny's Room	2.8m x 2.3m	15	Dressing Room	2.5m x 1.8m
07	Nanny's Bathroom	1.3m x 1.4m	16	Master Bathroom	2.1m x 2.3m
08	Master Bedroom	5.7m x 4.2m	17	Closet	1.0m x 1.7m
09	Dressing Room	2.8m x 2.7m			

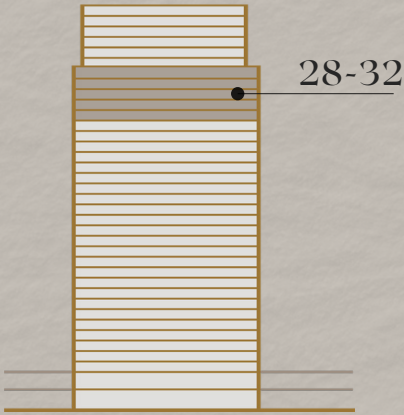
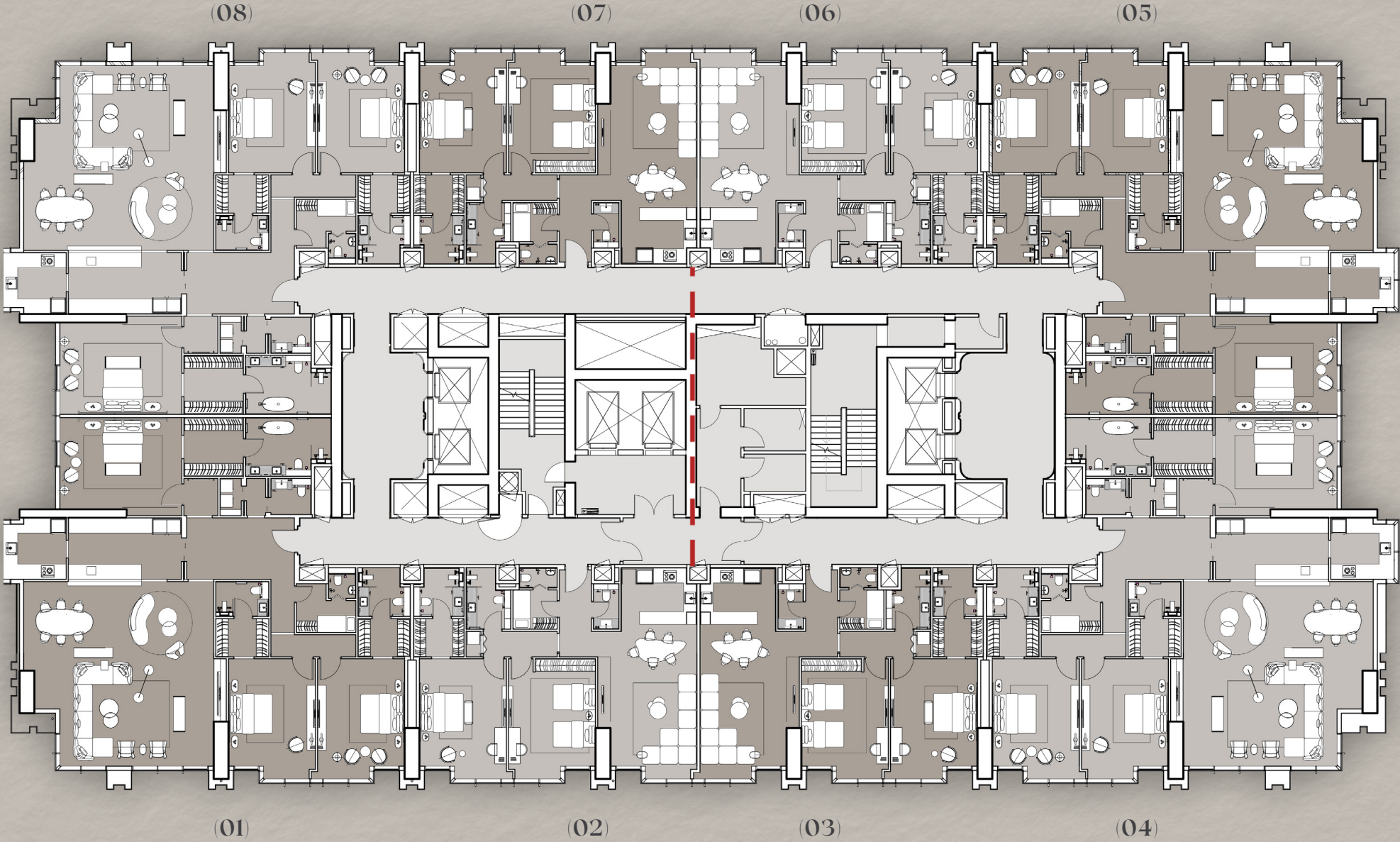


DISCLAIMER:

The visuals, plans, layouts, data, and other information presented in this brochure are for illustrative purposes only and are subject to modification until the project reaches its final 'as-built' stage.

205 TOWERS

FLOOR PLATES



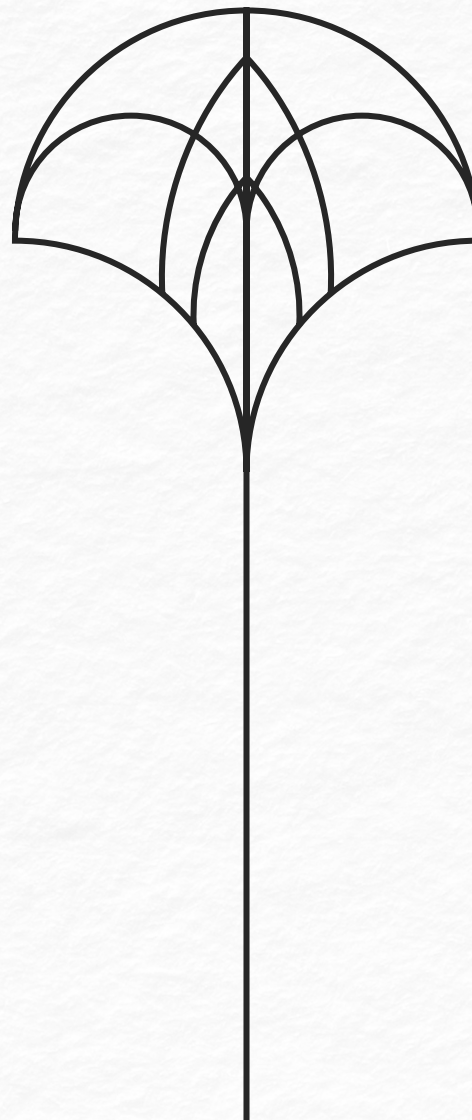
DISCLAIMER:

The visuals, plans, layouts, data, and other information presented in this brochure are for illustrative purposes only and are subject to modification until the project reaches its final 'as-built' stage.

APARTMENT FEATURES

2 BEDROOM APARTMENT

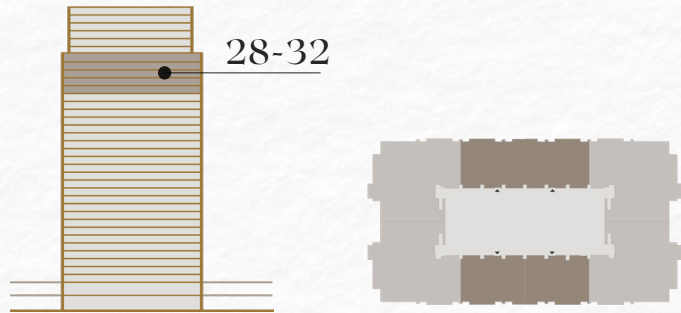
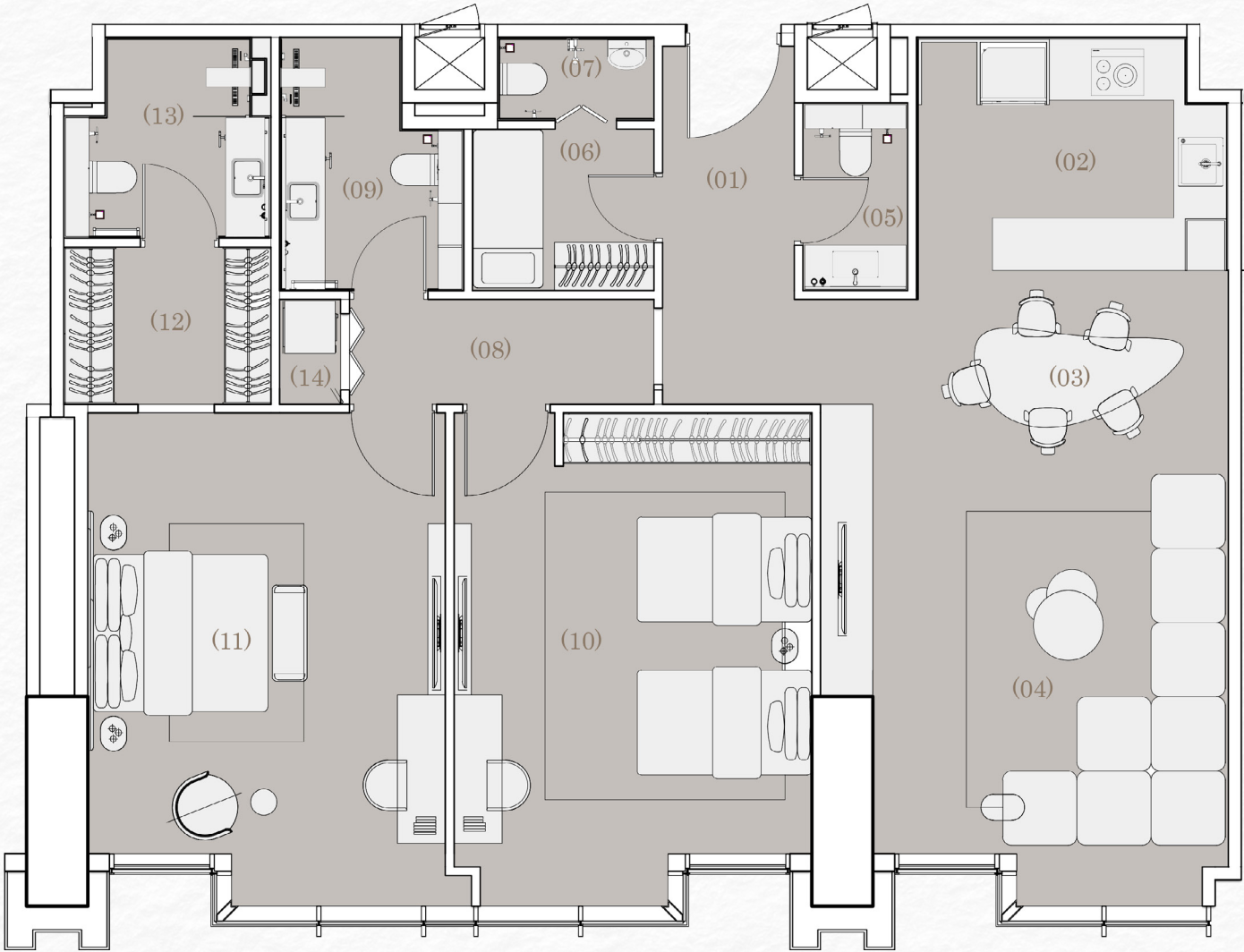
Discover family comfort redefined in our two-bedroom middle residences, featuring a dedicated nanny's room with bathroom and generous storage solutions. With two parking spaces and thoughtfully designed living areas, these homes balance sophisticated style with practical family needs.



2 BEDROOM APARTMENT

UNIT AREA 193 SQM

01	Entrance Lobby	1.5m x 4.1m	08	Lobby	3.5m x 1.2m
02	Open Kitchen	3.6m x 3.0m	09	Bathroom	1.8m x 2.8m
03	Dining Space	4.7m x 2.7m	10	Bedroom	4.1m x 5.0m
04	Living Space	4.7m x 6.3m	11	Master Bedroom	5.0m x 4.1m
05	Powder Room	1.3m x 2.1m	12	Dressing Room	2.4m x 1.8m
06	Nanny's Room	2.0m x 1.8m	13	Master Bathroom	2.3m x 2.3m
07	Nanny's Bathroom	1.8m x 0.9m	14	Closet	0.7m x 1.2m



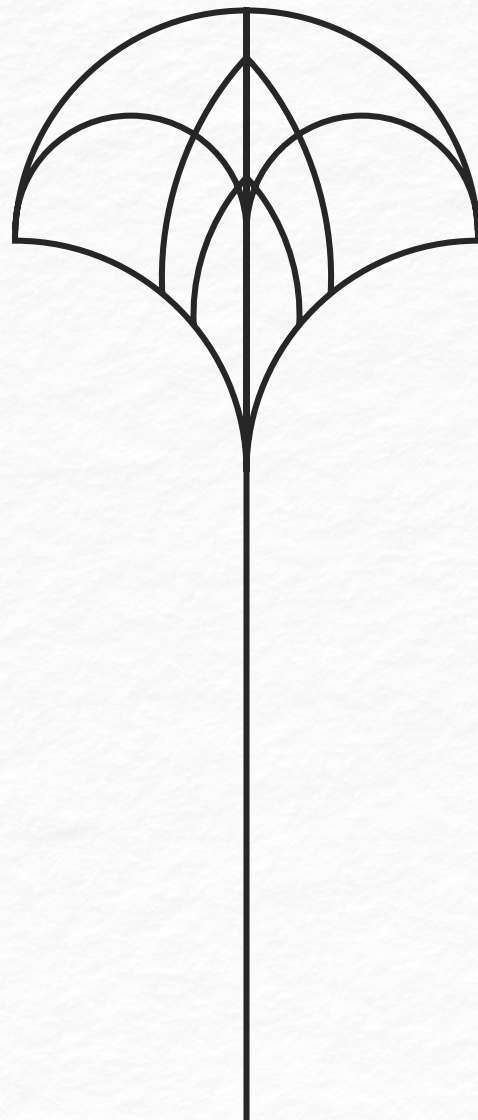
DISCLAIMER:

The visuals, plans, layouts, data, and other information presented in this brochure are for illustrative purposes only and are subject to modification until the project reaches its final 'as-built' stage.

APARTMENT FEATURES

3 BEDROOM APARTMENT

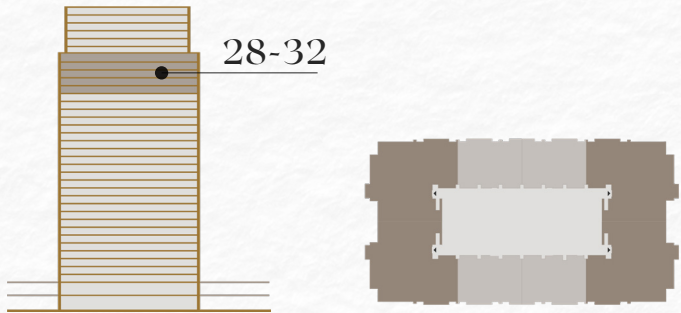
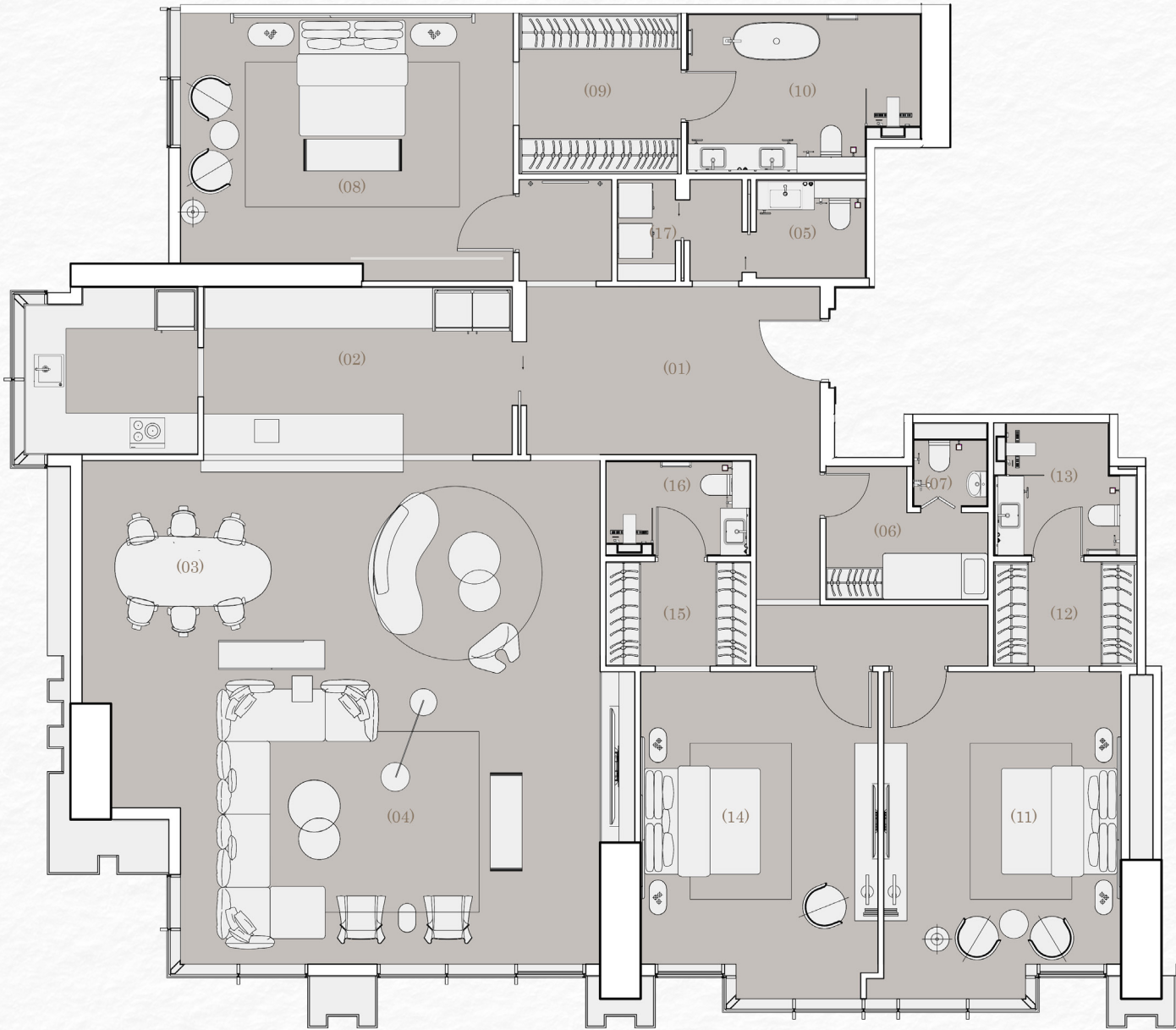
Occupying privileged corner positions, these select three-bedroom residences offer enhanced privacy and breathtaking vistas. All bedrooms feature en-suite bathrooms, including master bedrooms, with separate laundry and storage areas, and expansive living spaces designed for both everyday comfort and elegant entertainment. Each residence also includes three private parking spaces, offering convenience for residents.



3 BEDROOM APARTMENT

UNIT AREA 392 SQM

01	Entrance Lobby	5.0m x 2.9m	10	Master Bathroom	4.0m x 2.7m
02	Open Kitchen	8.5m x 2.9m	11	Master Bedroom	4.1m x 5.7m
03	Dining Space	4.2m x 3.1m	12	Dressing Room	2.5m x 1.8m
04	Living Space	9.5m x 8.7m	13	Master Bathroom	2.5m x 1.6m
05	Powder Room	1.8m x 1.8m	14	Master Bedroom	4.1m x 5.7m
06	Nanny's Room	2.8m x 2.3m	15	Dressing Room	2.5m x 1.8m
07	Nanny's Bathroom	1.3m x 1.4m	16	Master Bathroom	2.5m x 2.3m
08	Master Bedroom	5.7m x 4.3m	17	Closet	1.0m x 1.7m
09	Dressing Room	2.8m x 2.7m			

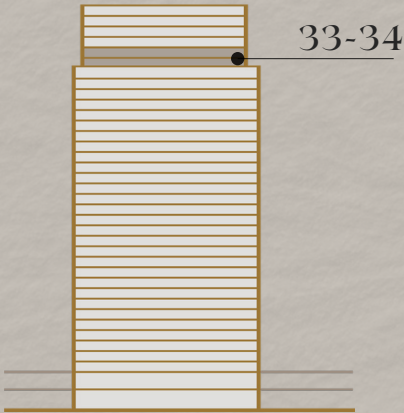
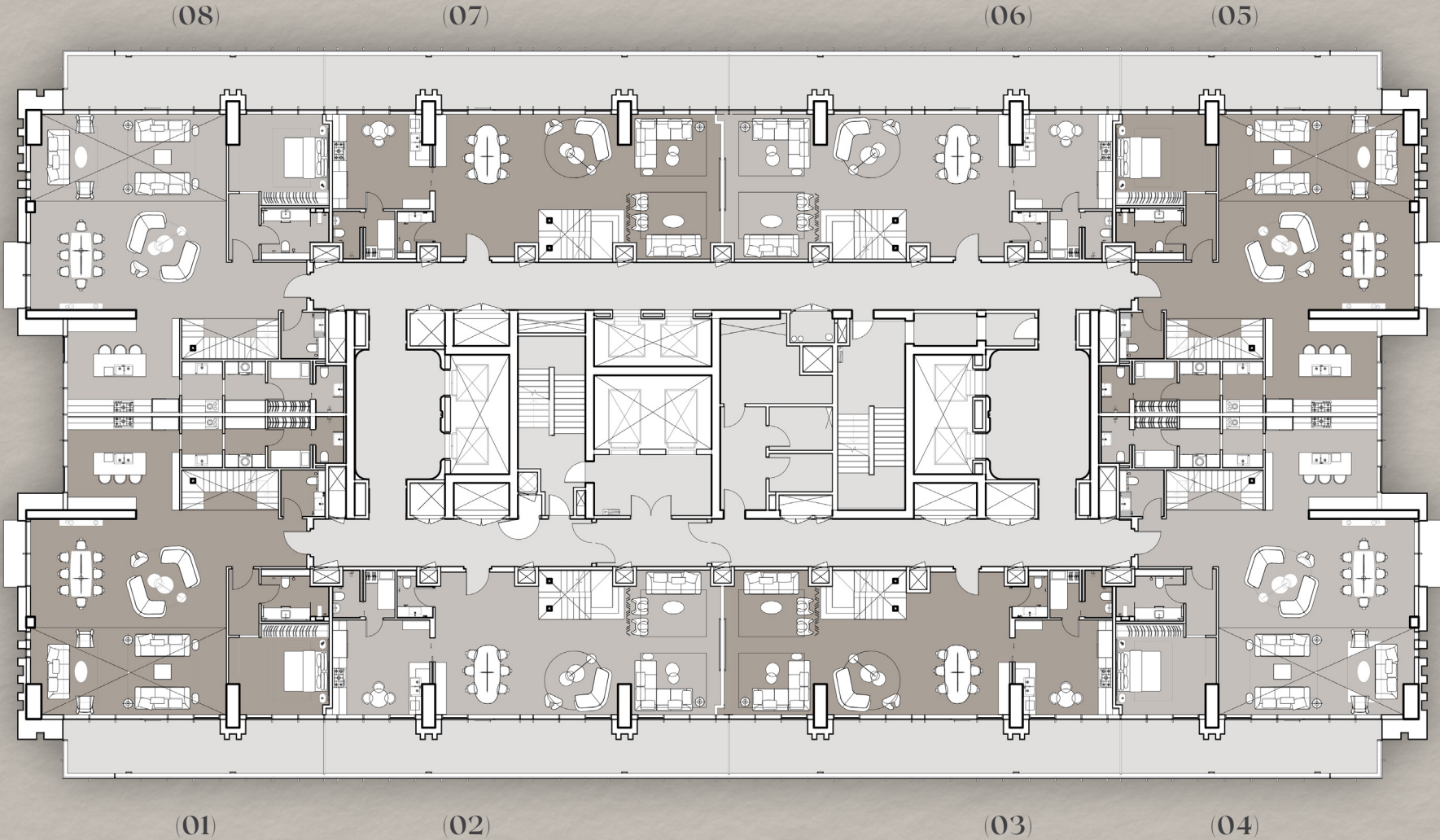


DISCLAIMER:

The visuals, plans, layouts, data, and other information presented in this brochure are for illustrative purposes only and are subject to modification until the project reaches its final 'as-built' stage.

205 TOWERS

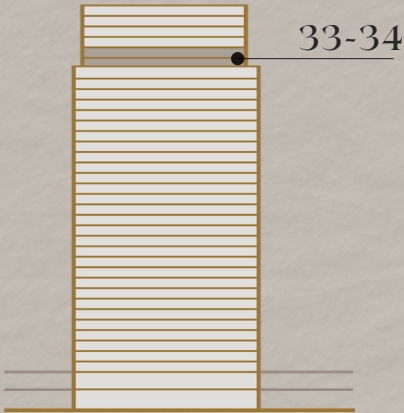
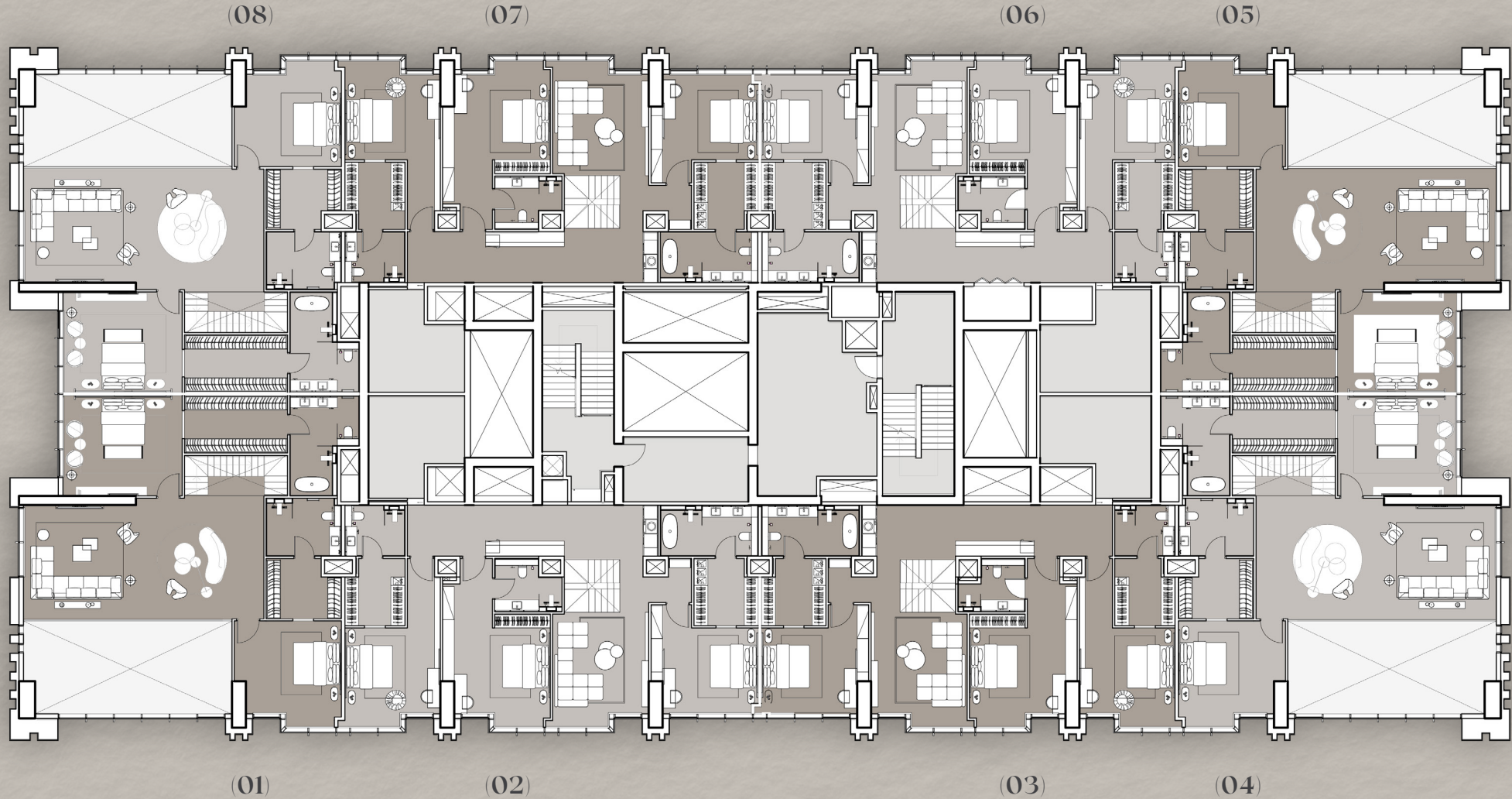
FLOOR PLATES



DISCLAIMER:

The visuals, plans, layouts, data, and other information presented in this brochure are for illustrative purposes only and are subject to modification until the project reaches its final 'as-built' stage.

205 TOWERS
FLOOR PLATES



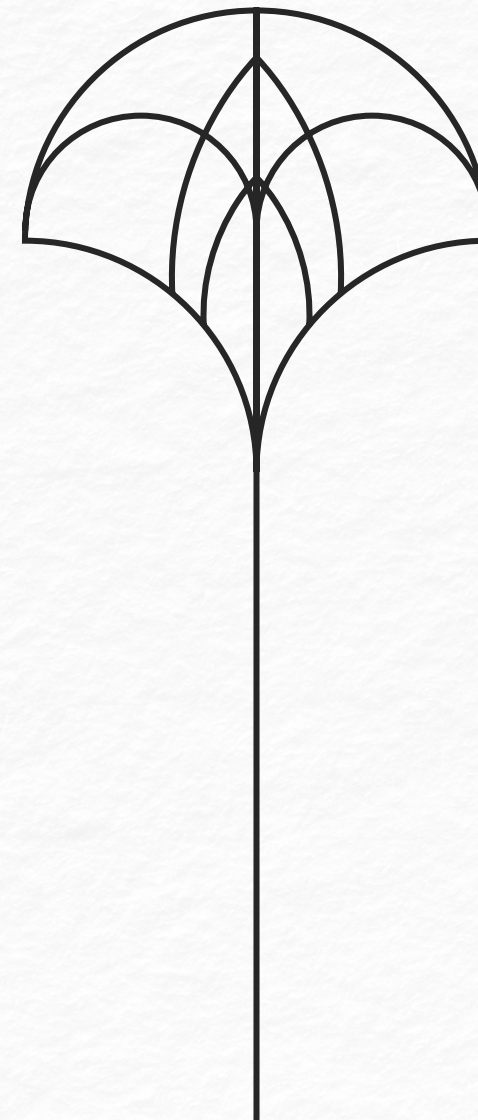
DISCLAIMER:

The visuals, plans, layouts, data, and other information presented in this brochure are for illustrative purposes only and are subject to modification until the project reaches its final 'as-built' stage.

APARTMENT FEATURES

3 BEDROOM DUPLEX

These exceptional corner duplexes combine unique architecture with functional excellence. Featuring three master bedrooms, a secondary living area, a grand terrace, and impressive entertainment spaces with high ceilings, they offer both style and comfort. Hard and soft kitchen configurations, three dedicated parking spaces, and premium finishes throughout create an incomparable living experience.

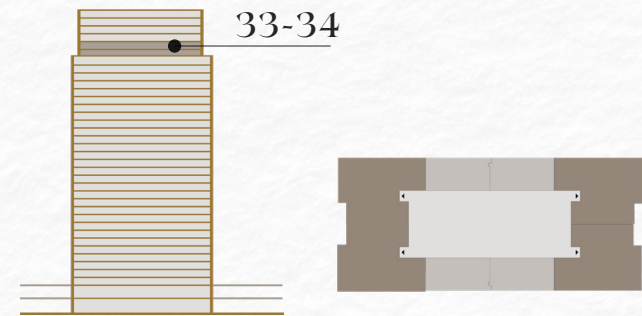
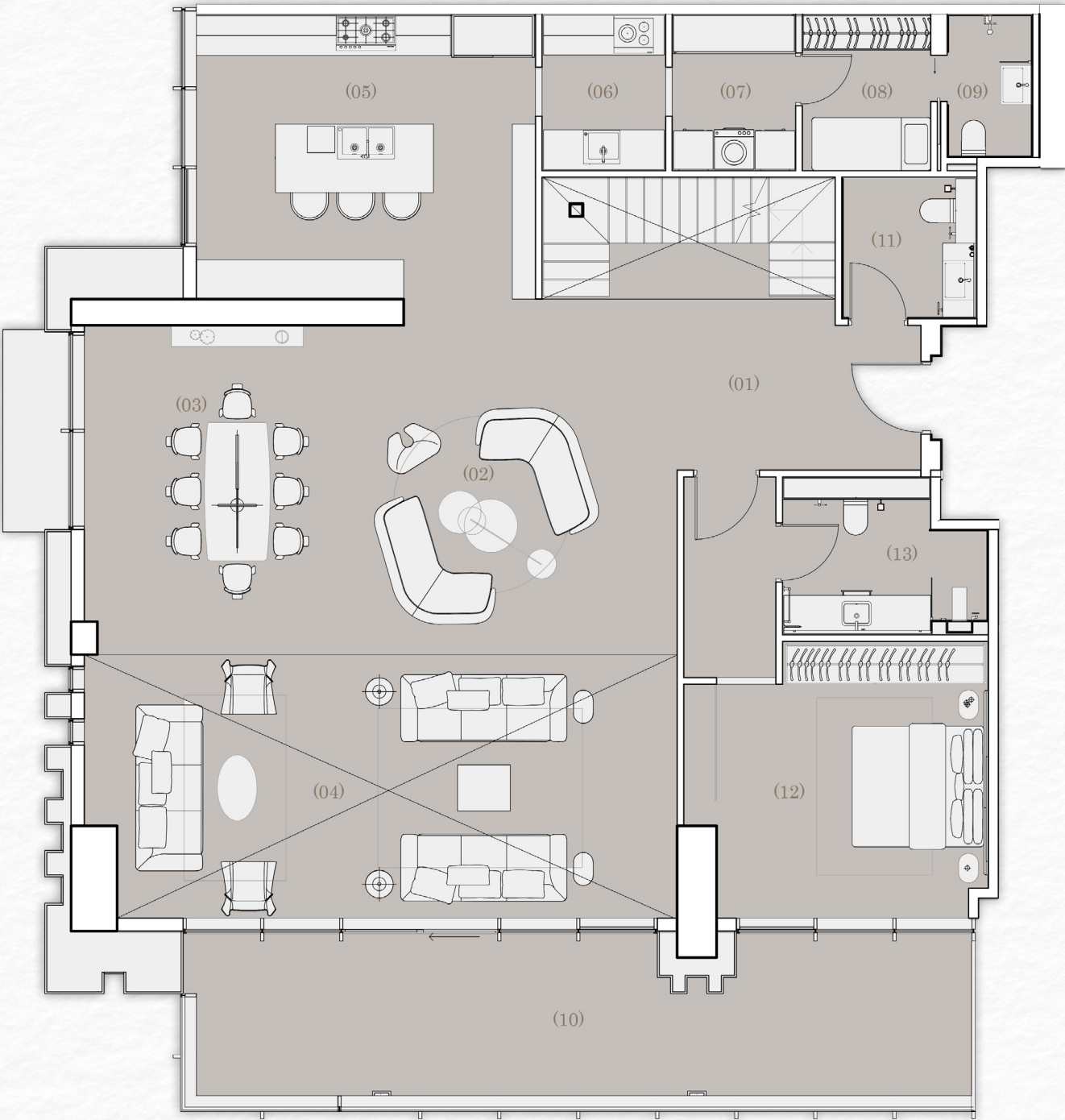


3 BEDROOM DUPLEX

UNIT AREA 570 SQM

LOWER FLOOR

01	Entrance	2.6m x 3.7m	08	Nanny's Room	2.0m x 2.3m
02	Casual Living	4.9m x 5.0m	09	Nanny's Bathroom	1.3m x 2.1m
03	Dining Space	4.0m x 5.0m	10	Terrace Lounge	11.7m x 2.5m
04	Double-height Living	9.0m x 4.0m	11	Powder Room	2.0m x 2.1m
05	Kitchen	5.1m x 4.3m	12	Master Bedroom	4.6m x 4.2m
06	Hard Kitchen	1.9m x 2.3m	13	Bathroom	3.1m x 2.4m
07	Laundry & Storage	1.9m x 2.3m			



DISCLAIMER:

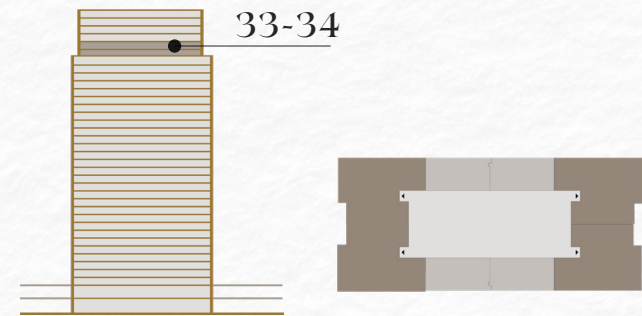
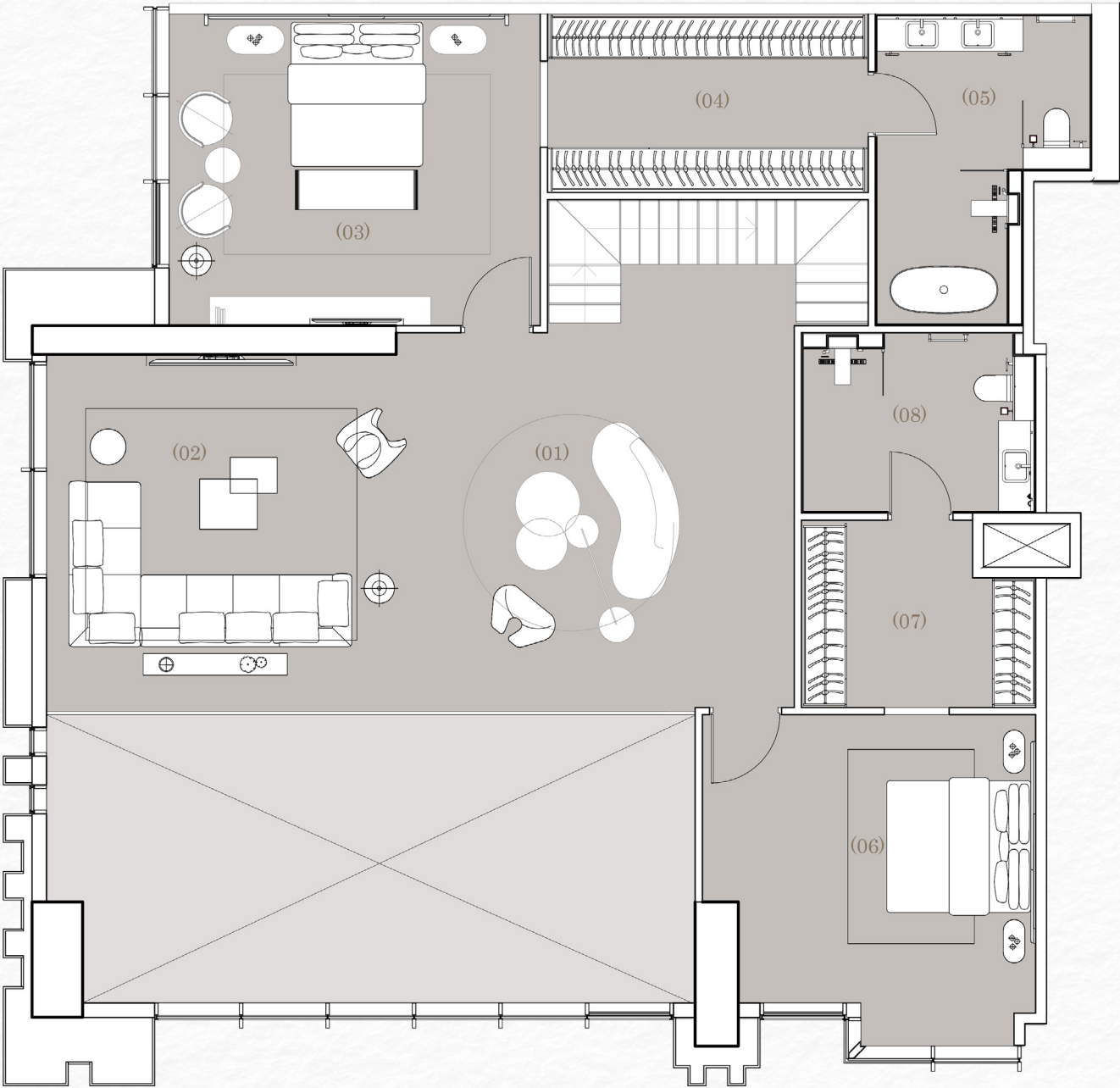
The visuals, plans, layouts, data, and other information presented in this brochure are for illustrative purposes only and are subject to modification until the project reaches its final 'as-built' stage.

3 BEDROOM DUPLEX

UNIT AREA 570 SQM

UPPER FLOOR

01	Casual Space	5.0m x 5.4m
02	Living Area	5.2m x 5.0m
03	Master Bedroom	5.1m x 4.3m
04	Dressing Room	4.5m x 2.5m
05	Bathroom	3.0m x 4.3m
06	Master Bedroom	4.6m x 4.5m
07	Dressing Room	3.2m x 2.6m
08	Bathroom	3.0m x 2.5m



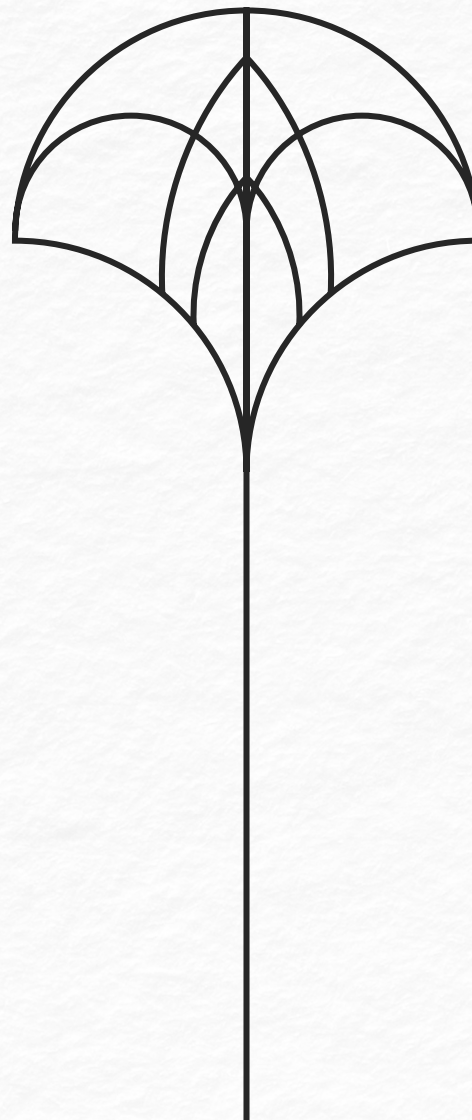
DISCLAIMER:

The visuals, plans, layouts, data, and other information presented in this brochure are for illustrative purposes only and are subject to modification until the project reaches its final 'as-built' stage.

APARTMENT FEATURES

3 BEDROOM DUPLEX

Offering a perfect balance of space and sophistication, these middle duplexes feature a grand terrace, three master bedrooms, and secondary private living area. High ceilings create an atmosphere of grandeur, while thoughtful touches like hard and soft kitchen options elevate everyday living.

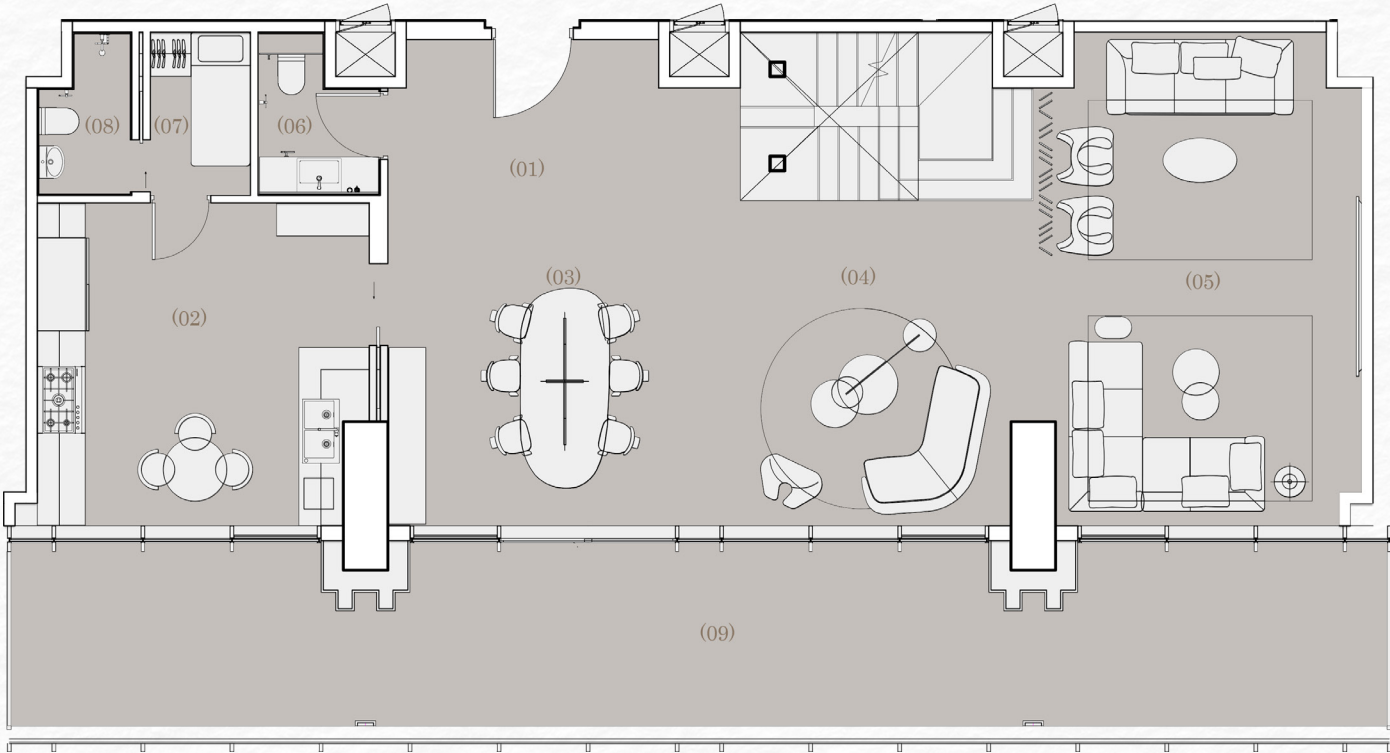


3 BEDROOM DUPLEX

UNIT AREA 497 SQM

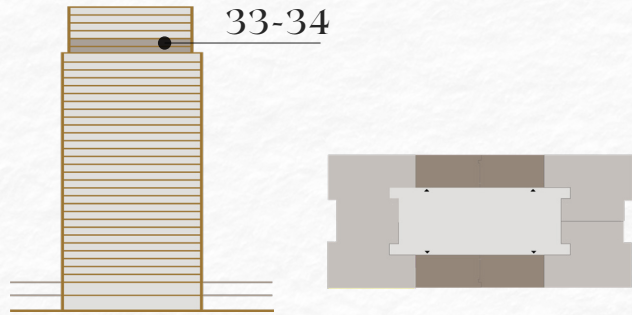
LOWER FLOOR

01	Entrance Lobby	4.3m x 3.3m
02	Kitchen	4.5m x 4.3m
03	Dining Space	4.2m x 3.5m
04	Casual Living Space	4.2m x 4.4m
05	Formal Living Space	8.5m x 3.5m
06	Powder Room	1.6m x 2.2m
07	Nanny's Room	1.3m x 2.2m
08	Nanny's Bathroom	1.2m x 2.2m
09	Terrace	1.90m x 2.5m



DISCLAIMER:

The visuals, plans, layouts, data, and other information presented in this brochure are for illustrative purposes only and are subject to modification until the project reaches its final 'as-built' stage.

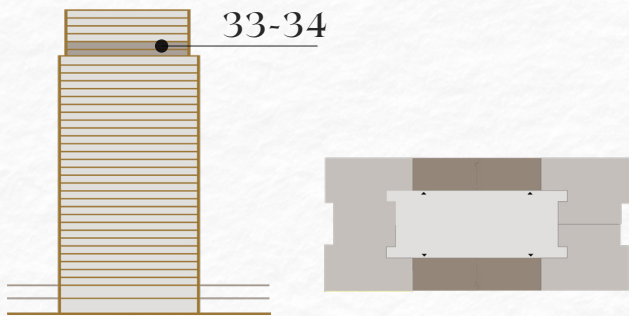
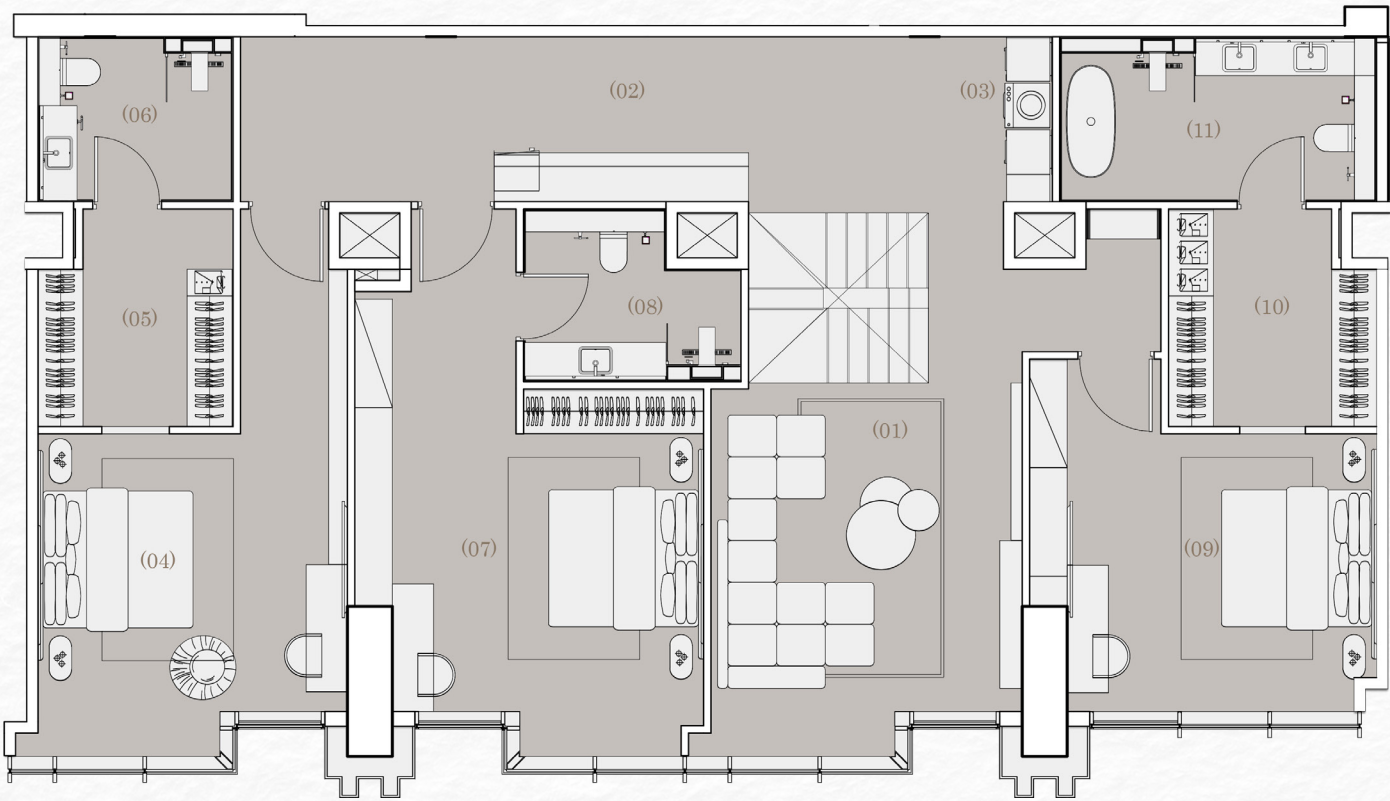


3 BEDROOM DUPLEX

UNIT AREA 497 SQM

UPPER FLOOR

01	Living Space	4.1m x 4.8m	07	Master Bedroom	4.6m x 4.9m
02	Lobby	6.8m x 2.2m	08	Bathroom	2.9m x 2.3m
03	Laundry & Storage	1.0m x 2.2m	09	Master Bedroom	4.6m x 3.6m
04	Master Bedroom	4.1m x 4.3m	10	Dressing	2.8m x 2.9m
05	Dressing	2.6m x 2.9m	11	Bathroom	4.2m x 2.2m
06	Bathroom	2.6m x 2.2m			

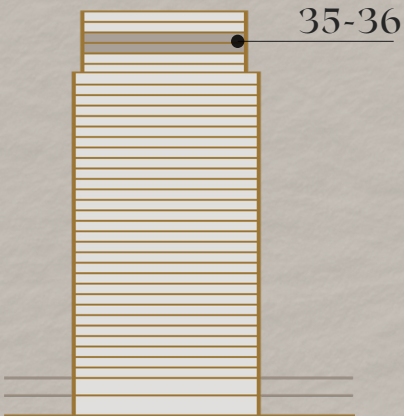
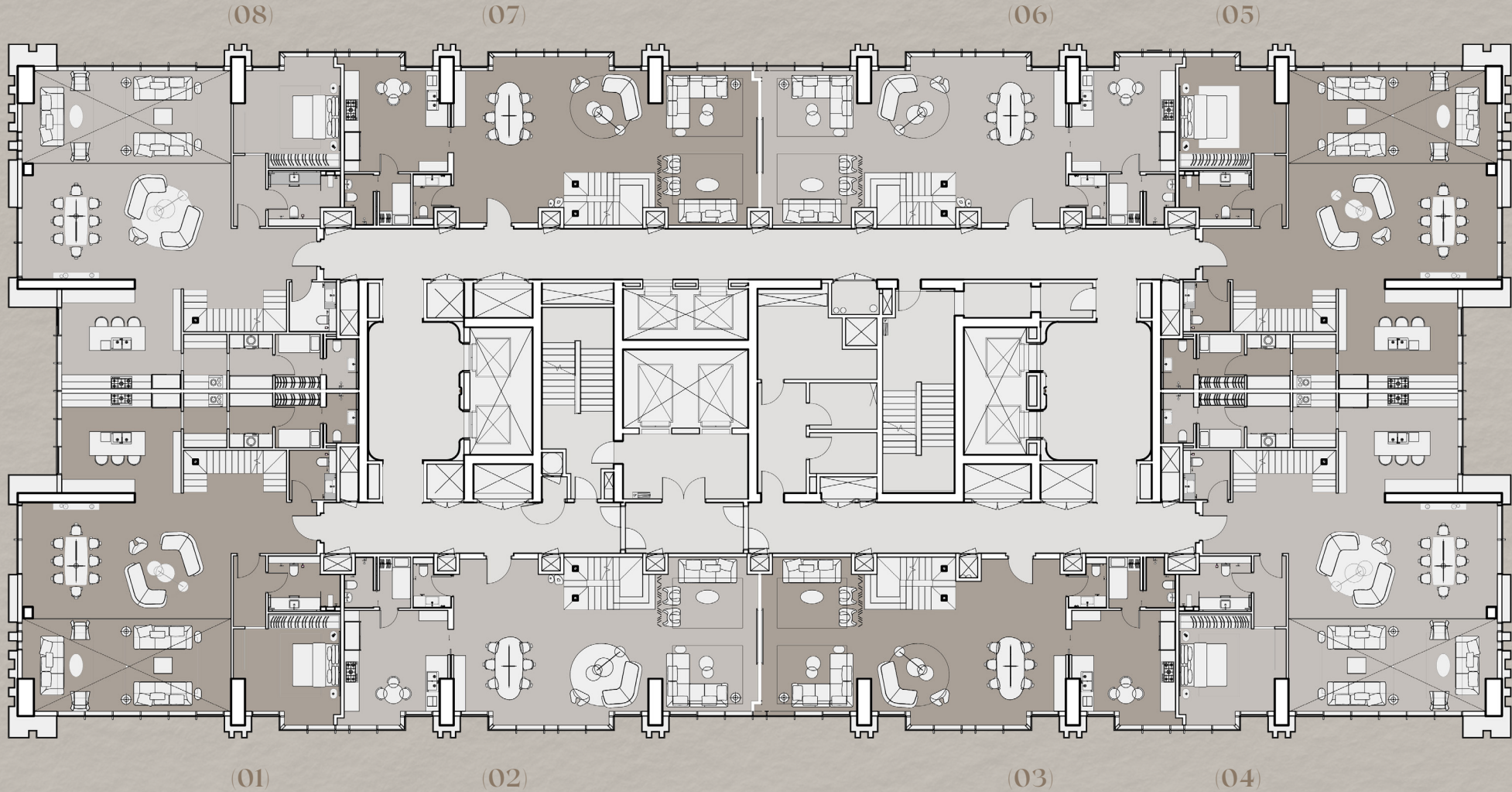


DISCLAIMER:

The visuals, plans, layouts, data, and other information presented in this brochure are for illustrative purposes only and are subject to modification until the project reaches its final 'as-built' stage.

205 TOWERS

FLOOR PLATES

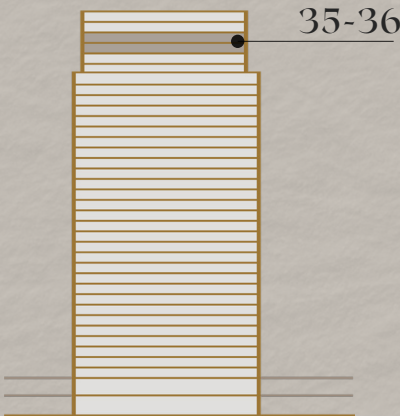
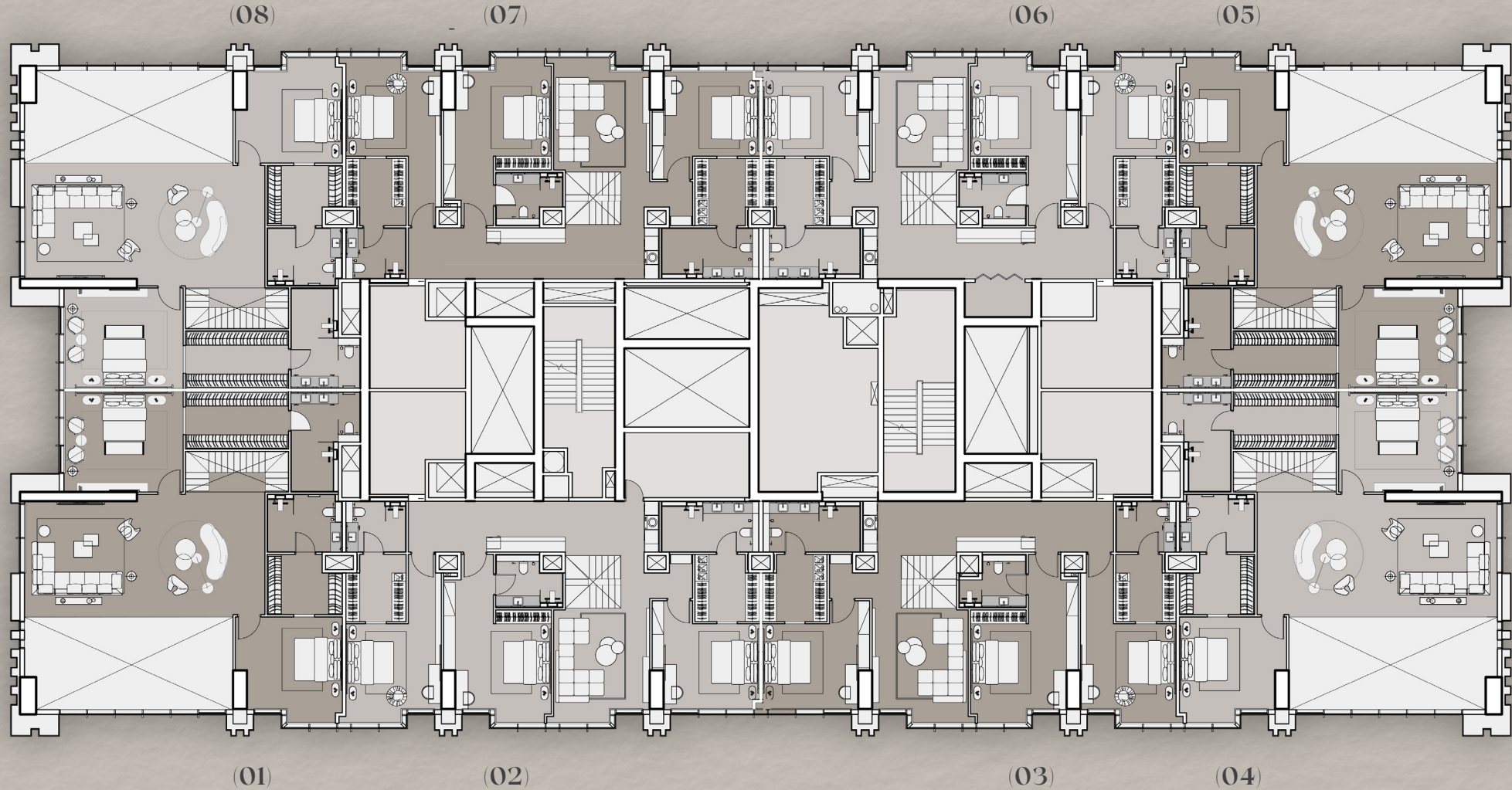


DISCLAIMER:

The visuals, plans, layouts, data, and other information presented in this brochure are for illustrative purposes only and are subject to modification until the project reaches its final 'as-built' stage.

205 TOWERS

FLOOR PLATES



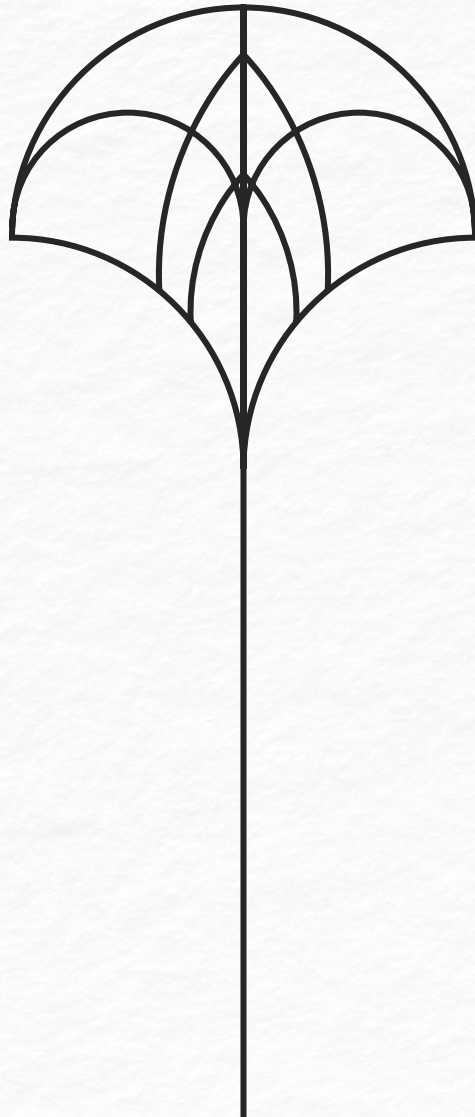
DISCLAIMER:

The visuals, plans, layouts, data, and other information presented in this brochure are for illustrative purposes only and are subject to modification until the project reaches its final 'as-built' stage.

APARTMENT FEATURES

3 BEDROOM
DUPLEX

These exceptional corner duplexes combine unique architecture with functional excellence. Featuring three master bedrooms, secondary living area, and impressive entertainment spaces with high ceilings. Hard and soft kitchen configurations, three parking spaces, and premium finishes throughout create an incomparable living experience.

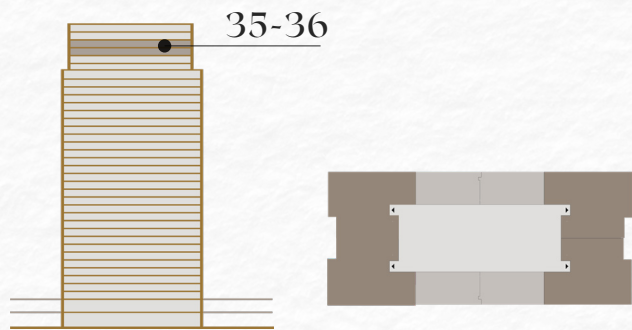
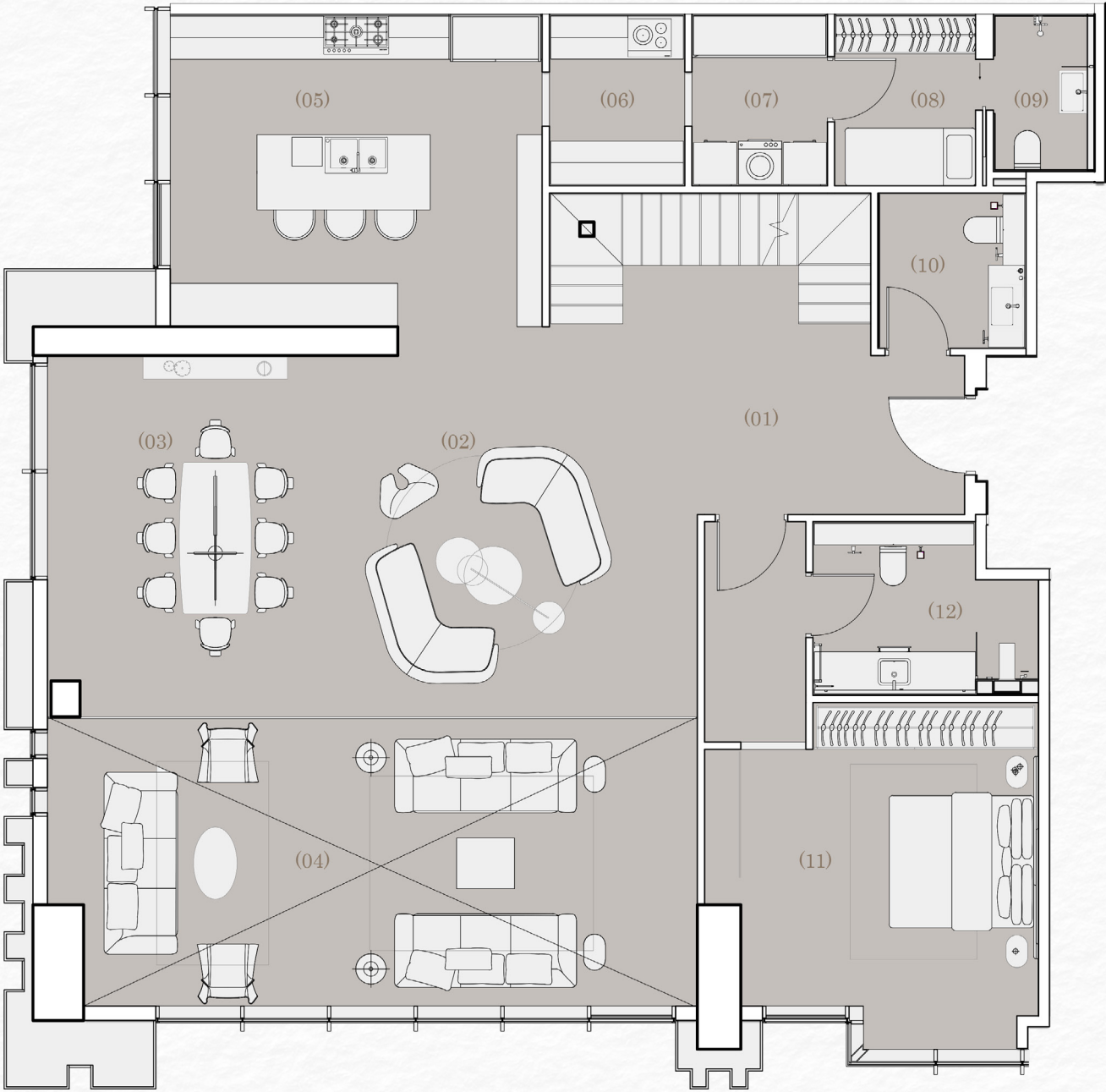


3 BEDROOM DUPLEX

UNIT AREA 527 SQM

LOWER FLOOR

01	Entrance	2.1m x 2.2m	07	Laundry & Storage	1.9m x 2.4m
02	Casual Living	5.1m x 5.0m	08	Nanny's Room	2.0m x 2.4m
03	Dining Space	3.8m x 5.0m	09	Nanny's Bathroom	1.3m x 2.1m
04	Double-height Living	9.0m x 3.9m	10	Powder Room	2.0m x 2.1m
05	Kitchen	5.1m x 4.3m	11	Master Bedroom	4.6m x 4.7m
06	Hard Kitchen	1.9m x 2.4m	12	Bathroom	3.1m x 2.4m



DISCLAIMER:

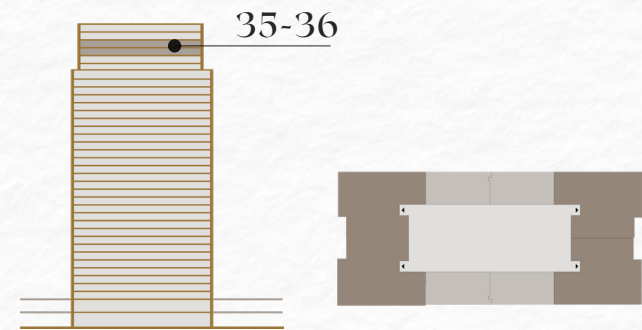
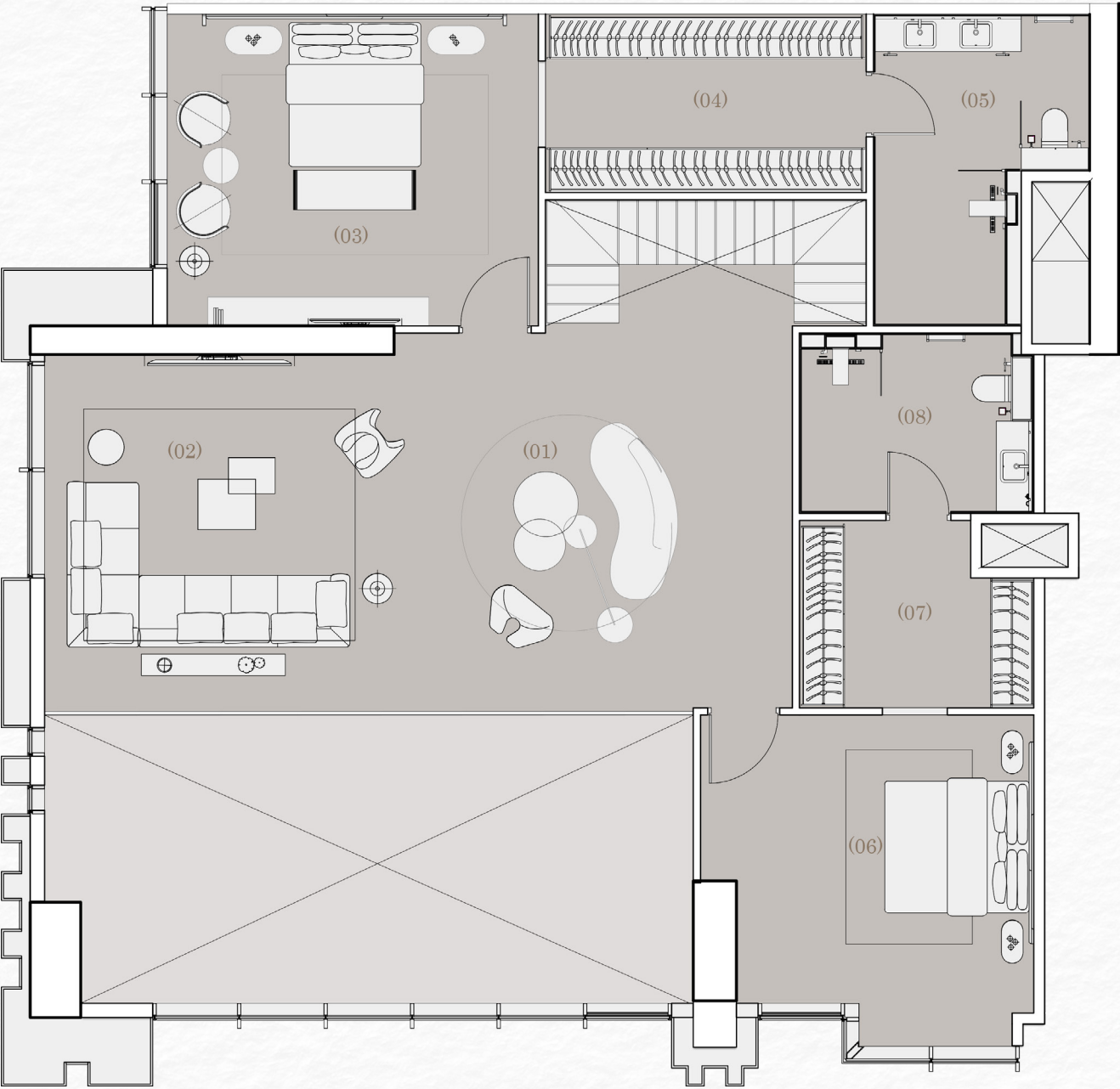
The visuals, plans, layouts, data, and other information presented in this brochure are for illustrative purposes only and are subject to modification until the project reaches its final 'as-built' stage.

3 BEDROOM DUPLEX

UNIT AREA 527 SQM

UPPER FLOOR

01	Casual Space	5.5m x 5.2m
02	Living Area	4.8m x 4.9m
03	Master Bedroom	5.1m x 4.3m
04	Dressing Room	4.4m x 2.5m
05	Bathroom	3.0m x 4.3m
06	Master Bedroom	4.6m x 4.5m
07	Dressing Room	3.2m x 2.6m
08	Bathroom	3.2m x 2.5m



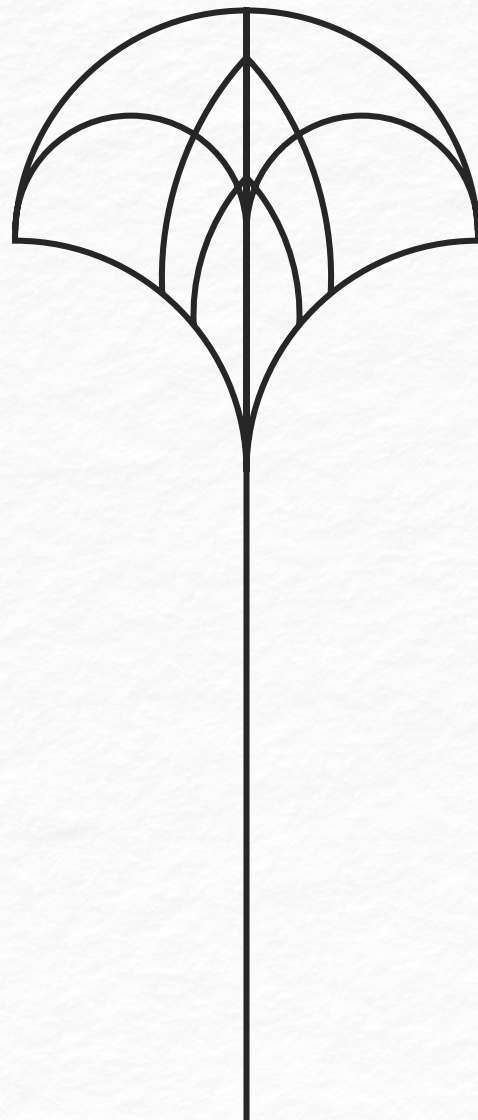
DISCLAIMER:

The visuals, plans, layouts, data, and other information presented in this brochure are for illustrative purposes only and are subject to modification until the project reaches its final 'as-built' stage.

APARTMENT FEATURES

3 BEDROOM DUPLEX

Offering a perfect balance of space and sophistication, these middle duplexes feature three master bedrooms and secondary private living area. Offering a perfect balance of space and sophistication, these middle duplexes feature three master bedrooms and a secondary private living area. High ceilings create an atmosphere of grandeur, while thoughtful touches like hard and soft kitchen options elevate everyday living. Each residence also includes three dedicated parking spaces, ensuring convenience and ease for residents. touches like hard and soft kitchen options elevate everyday living.

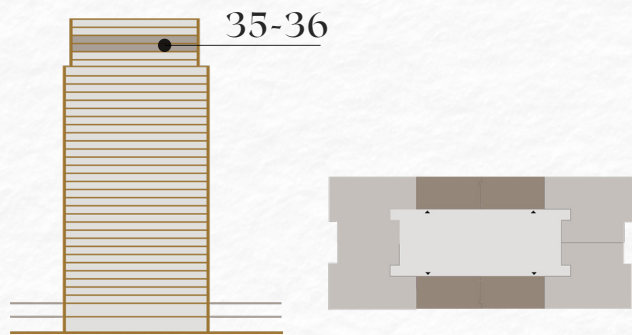
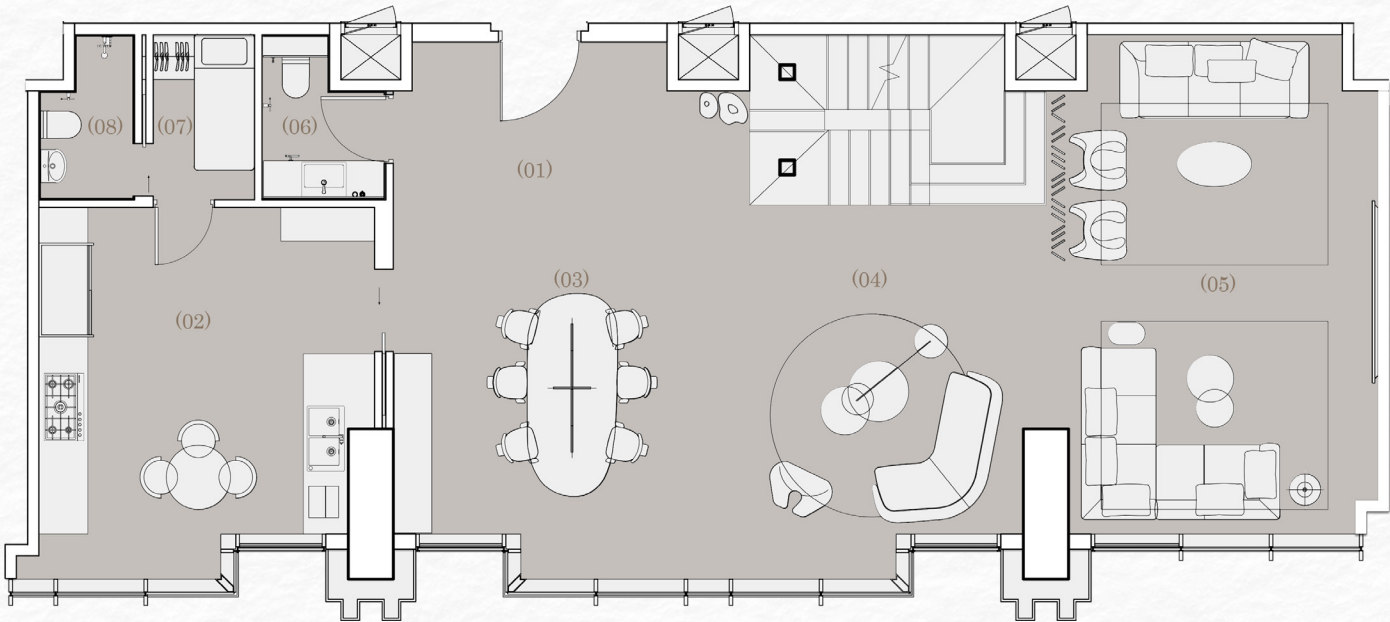


3 BEDROOM DUPLEX

UNIT AREA 433 SQM

LOWER FLOOR

01	Entrance Lobby	4.7m x 2.2m
02	Kitchen	4.5m x 5.0m
03	Dining Space	4.3m x 4.8m
04	Casual Living Space	4.0m x 4.8m
05	Formal Living Space	4.4m x 6.6m
06	Powder Room	1.6m x 2.2m
07	Nanny's Room	1.3m x 2.2m
08	Nanny's Bathroom	1.2m x 2.2m



DISCLAIMER:

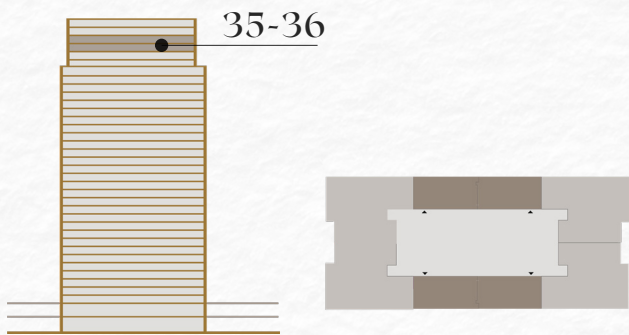
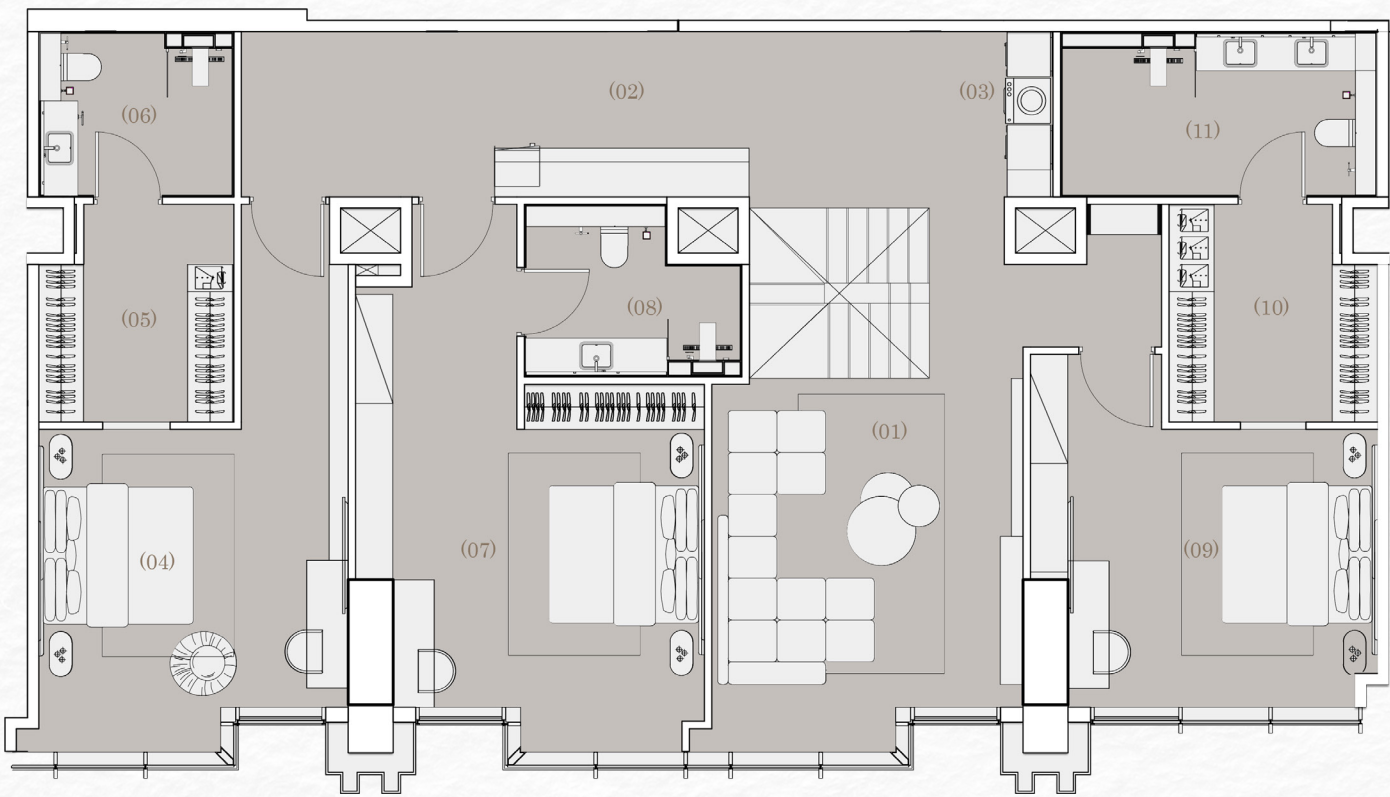
The visuals, plans, layouts, data, and other information presented in this brochure are for illustrative purposes only and are subject to modification until the project reaches its final 'as-built' stage.

3 BEDROOM DUPLEX

UNIT AREA 433 SQM

UPPER FLOOR

01	Living Space	4.1m x 4.9m	07	Master Bedroom	4.7m x 4.9m
02	Lobby	9.1m x 2.2m	08	Bathroom	2.9m x 2.3m
03	Laundry & Storage	0.7m x 2.2m	09	Master Bedroom	4.6m x 3.6m
04	Master Bedroom	4.1m x 4.2m	10	Dressing	2.8m x 2.9m
05	Dressing	2.6m x 2.9m	11	Bathroom	4.2m x 2.2m
06	Bathroom	2.6m x 2.2m			

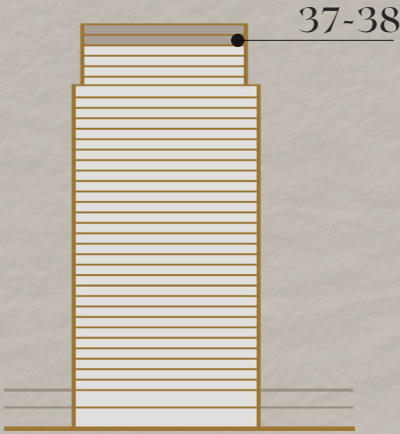
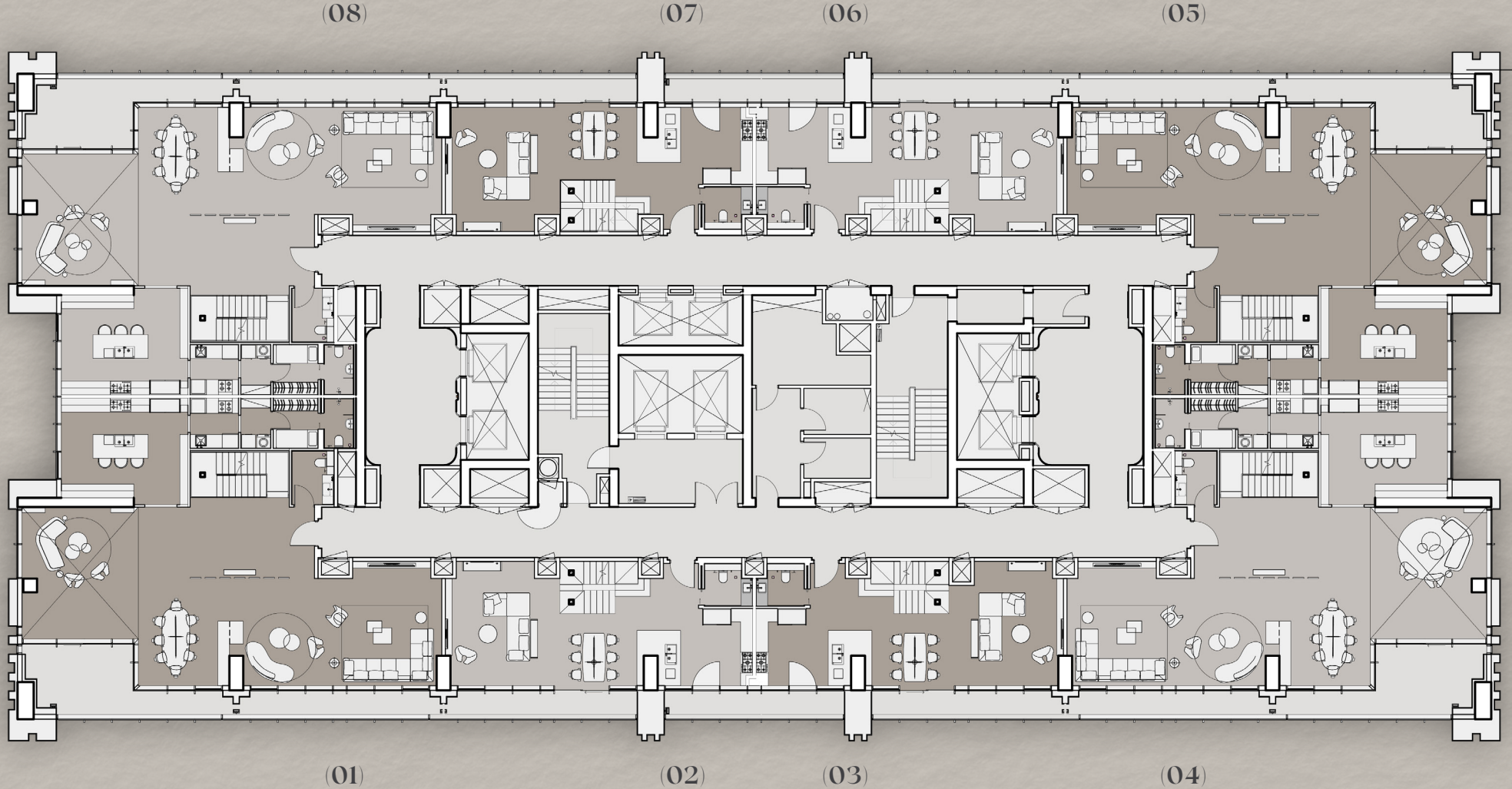


DISCLAIMER:

The visuals, plans, layouts, data, and other information presented in this brochure are for illustrative purposes only and are subject to modification until the project reaches its final 'as-built' stage.

205 TOWERS

FLOOR PLATES

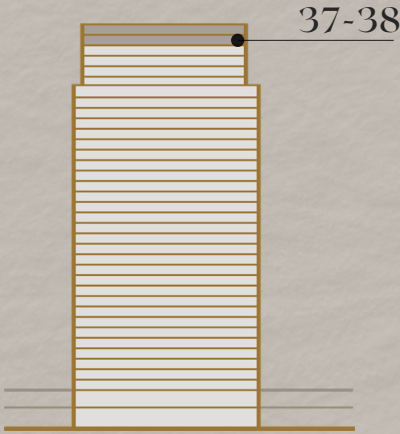
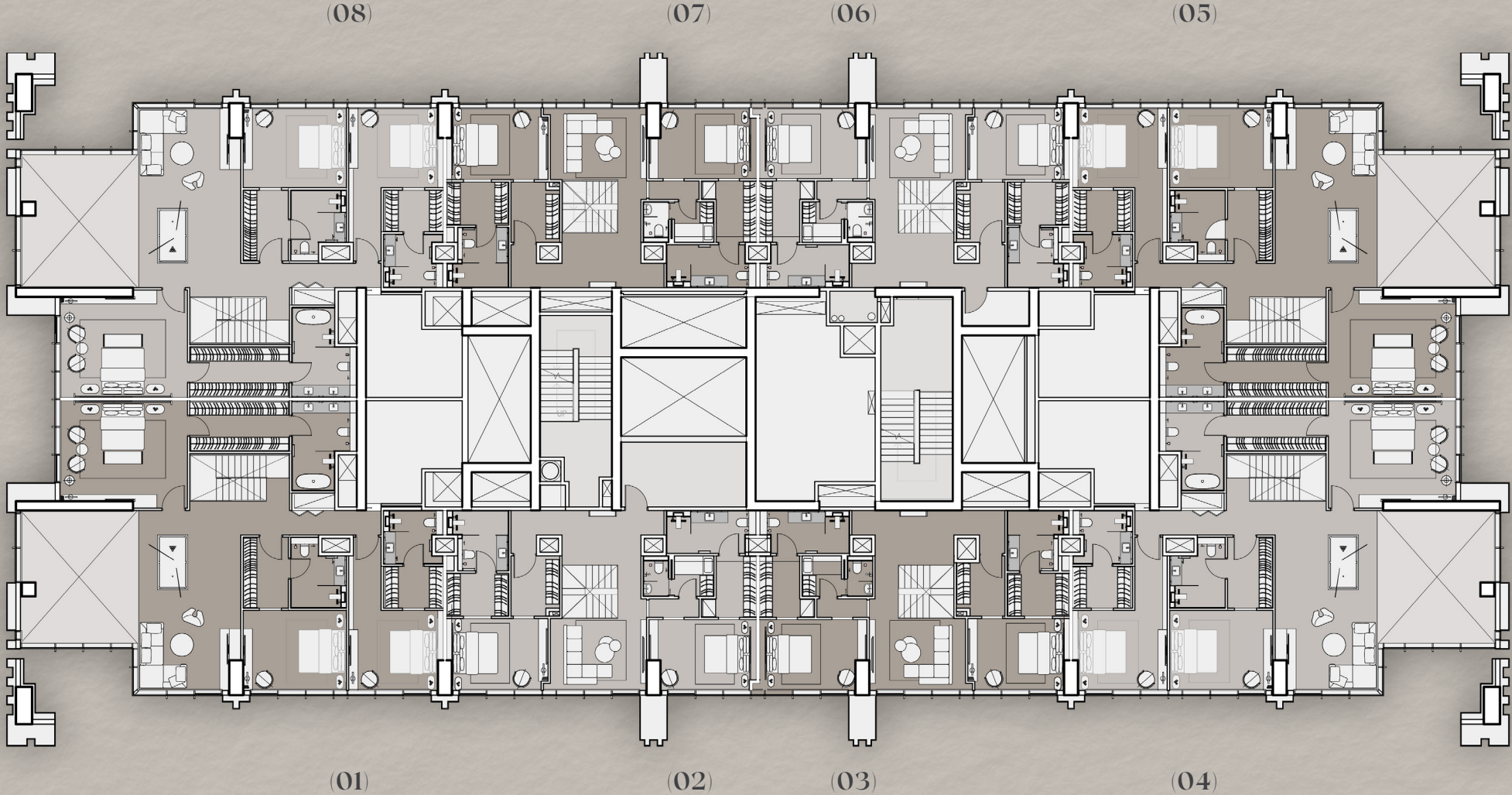


DISCLAIMER:

The visuals, plans, layouts, data, and other information presented in this brochure are for illustrative purposes only and are subject to modification until the project reaches its final 'as-built' stage.

205 TOWERS

FLOOR PLATES



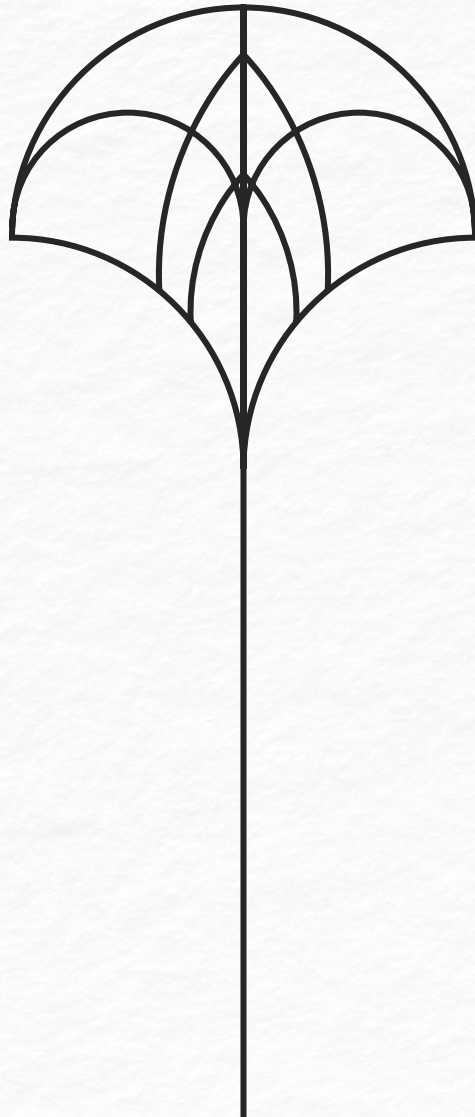
DISCLAIMER:

The visuals, plans, layouts, data, and other information presented in this brochure are for illustrative purposes only and are subject to modification until the project reaches its final 'as-built' stage.

APARTMENT FEATURES

2 BEDROOM
DUPLEX

Experience vertical living reimagined in these duplex residences featuring high ceilings and generous proportions. With hard and soft kitchen options, two en-suite master bedrooms, and secondary private living room, these homes deliver exceptional space and style with two dedicated parking spaces.

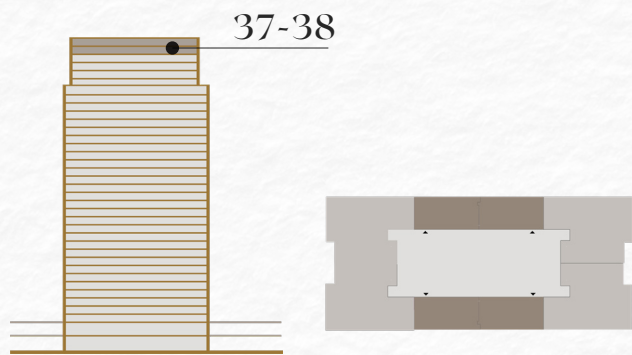
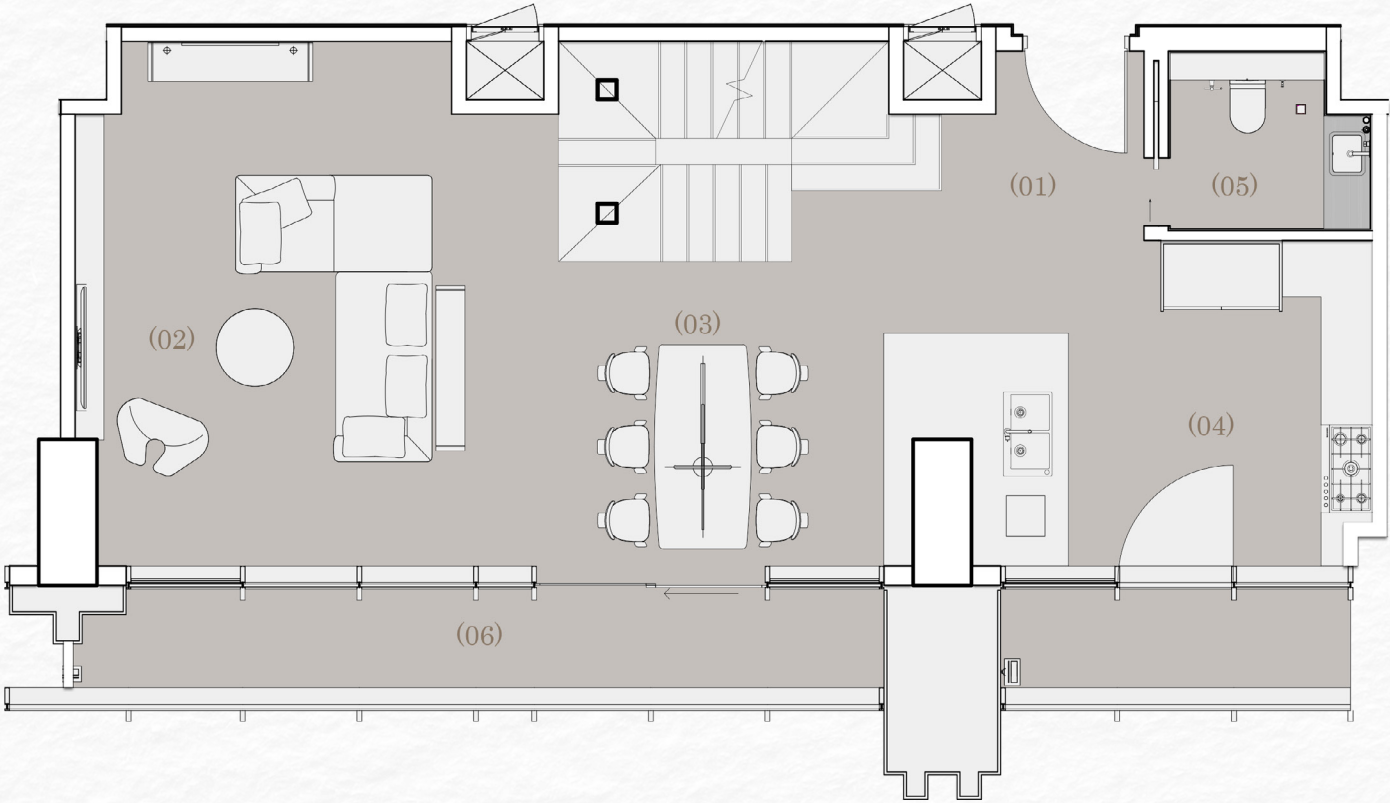


2 BEDROOM DUPLEX

UNIT AREA 289 SQM

LOWER FLOOR

01	Entrance	1.5m x 1.4m
02	Living Space	5.0m x 5.4m
03	Dining Space	3.4m x 3.1m
04	Open Kitchen	5.0m x 3.3m
05	Powder Room	2.1m x 1.8m
06	Terrace	12.4m x 1.2m



DISCLAIMER:

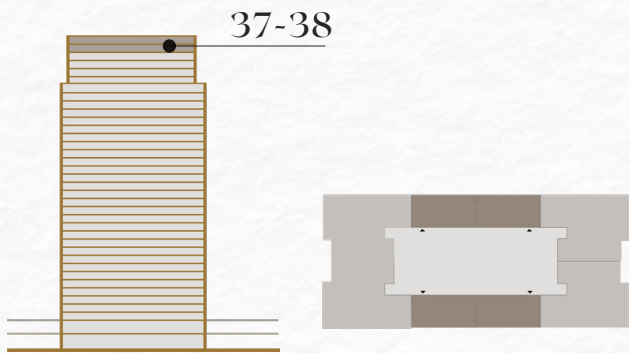
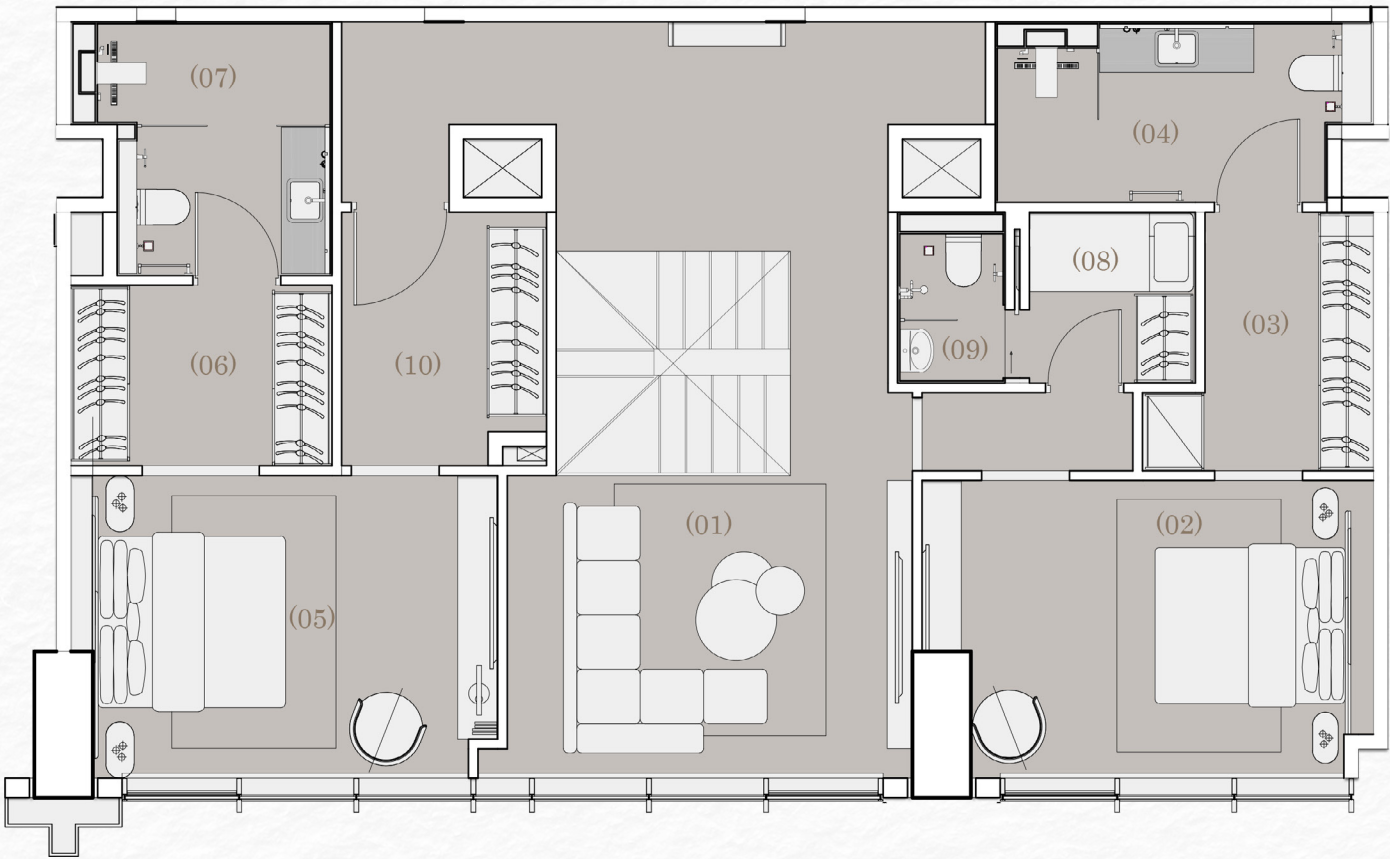
The visuals, plans, layouts, data, and other information presented in this brochure are for illustrative purposes only and are subject to modification until the project reaches its final 'as-built' stage.

2 BEDROOM DUPLEX

UNIT AREA 289 SQM

UPPER FLOOR

01	Living Space	4.1m x 3.0m	06	Dressing	2.7m x 1.8m
02	Master Bedroom	4.6m x 3.0m	07	Master Bathroom	2.7m x 2.6m
03	Dressing	1.7m x 2.6m	08	Nanny's Room	1.7m x 1.7m
04	Master Bathroom	3.8m x 1.8m	09	Nanny's Bathroom	1.1m x 1.7m
05	Master Bedroom	4.1m x 3.0m	10	Walk-in Closet	2.1m x 2.6m



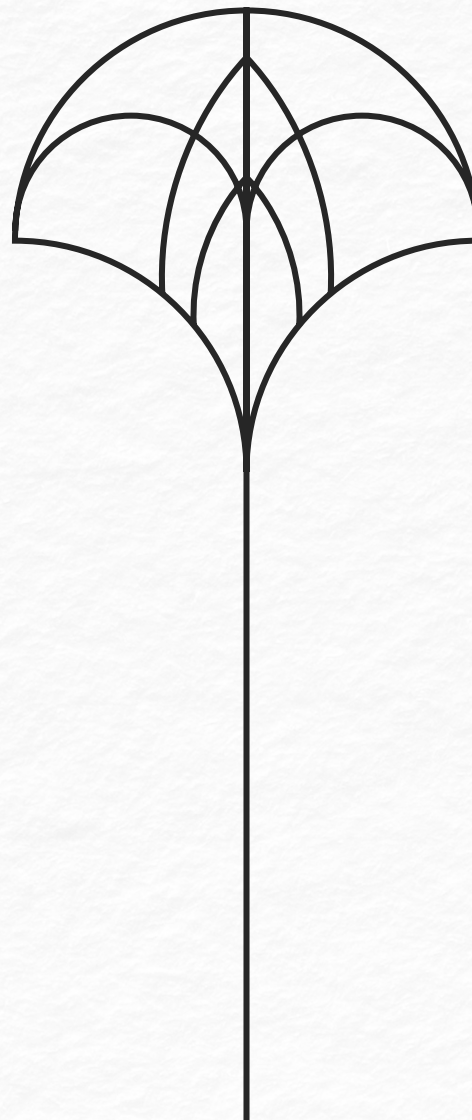
DISCLAIMER:

The visuals, plans, layouts, data, and other information presented in this brochure are for illustrative purposes only and are subject to modification until the project reaches its final 'as-built' stage.

APARTMENT FEATURES

3 BEDROOM DUPLEX

Among our most distinguished offerings, these corner duplexes feature three master bedrooms, private secondary living space, and a spectacular grand terrace. With high ceilings, premium finishes, and three parking spaces, these homes represent the pinnacle of sophisticated vertical living.

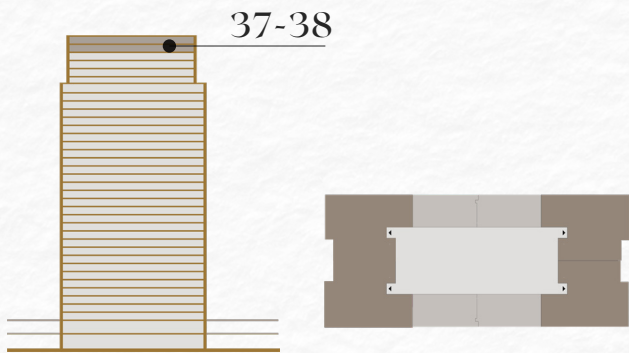
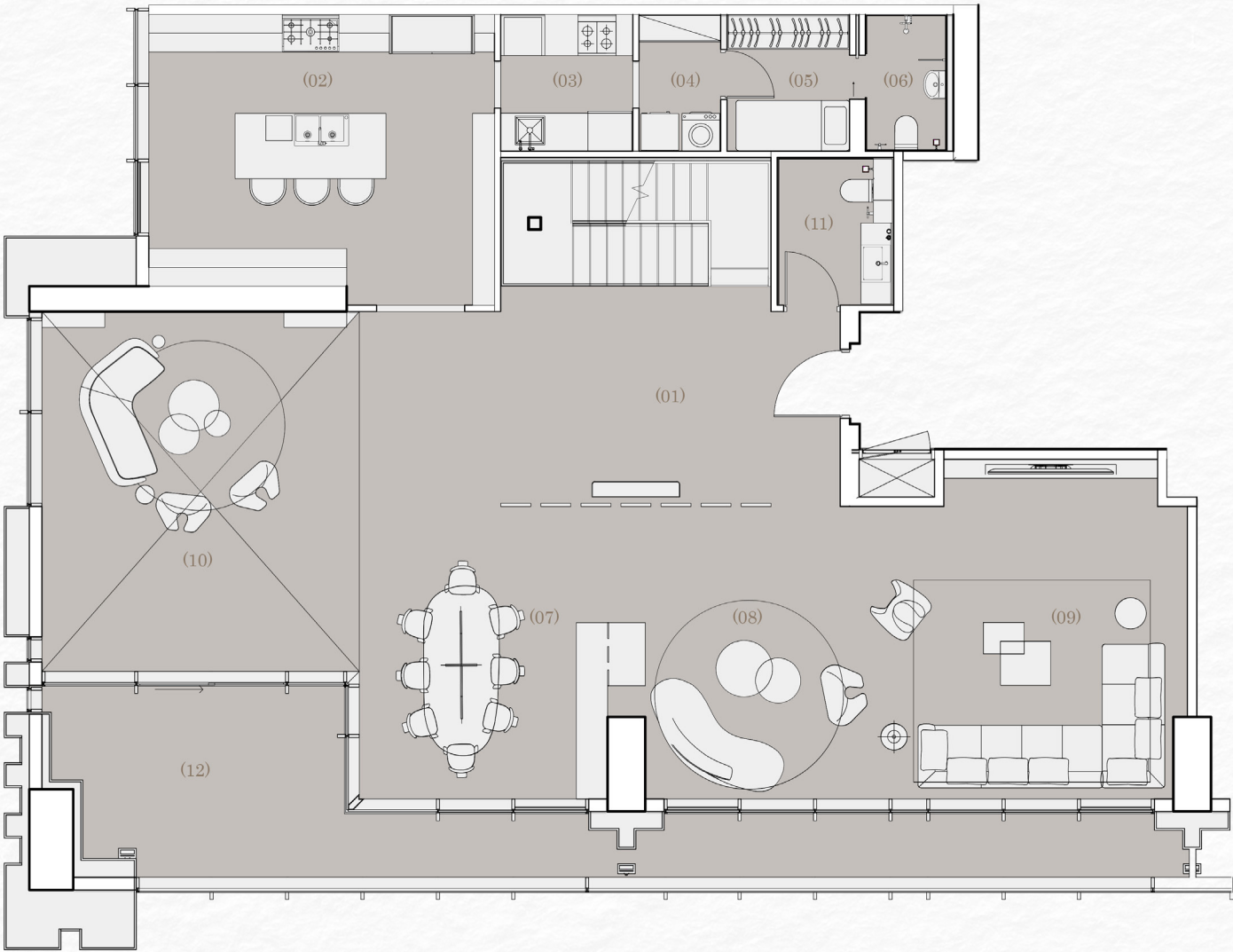


3 BEDROOM DUPLEX

UNIT AREA 583 sqm

LOWER FLOOR

01	Entrance	5.4m x 3.1m	07	Dining	4.0m x 4.6m
02	Kitchen	4.5m x 4.3m	08	Casual Living	3.9m x 4.6m
03	Hard Kitchen	2.0m x 2.2m	09	Formal Living	4.7m x 5.6m
04	Closet & Storage	1.3m x 2.2m	10	Double-height Living	5.0m x 5.7m
05	Nanny's Room	2.1m x 2.1m	11	Powder Room	1.8m x 2.3m
06	Nanny's Bathroom	1.3m x 2.1m	12	Terrace	17.5m x 3.0m



DISCLAIMER:

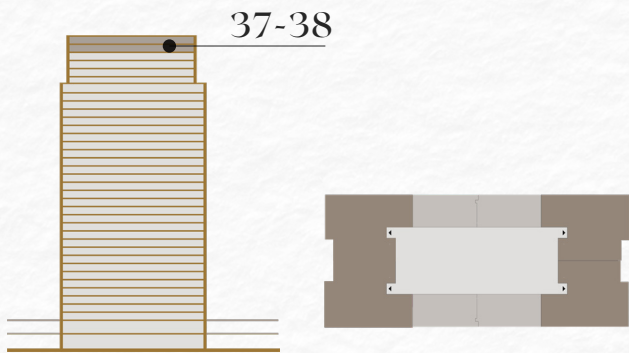
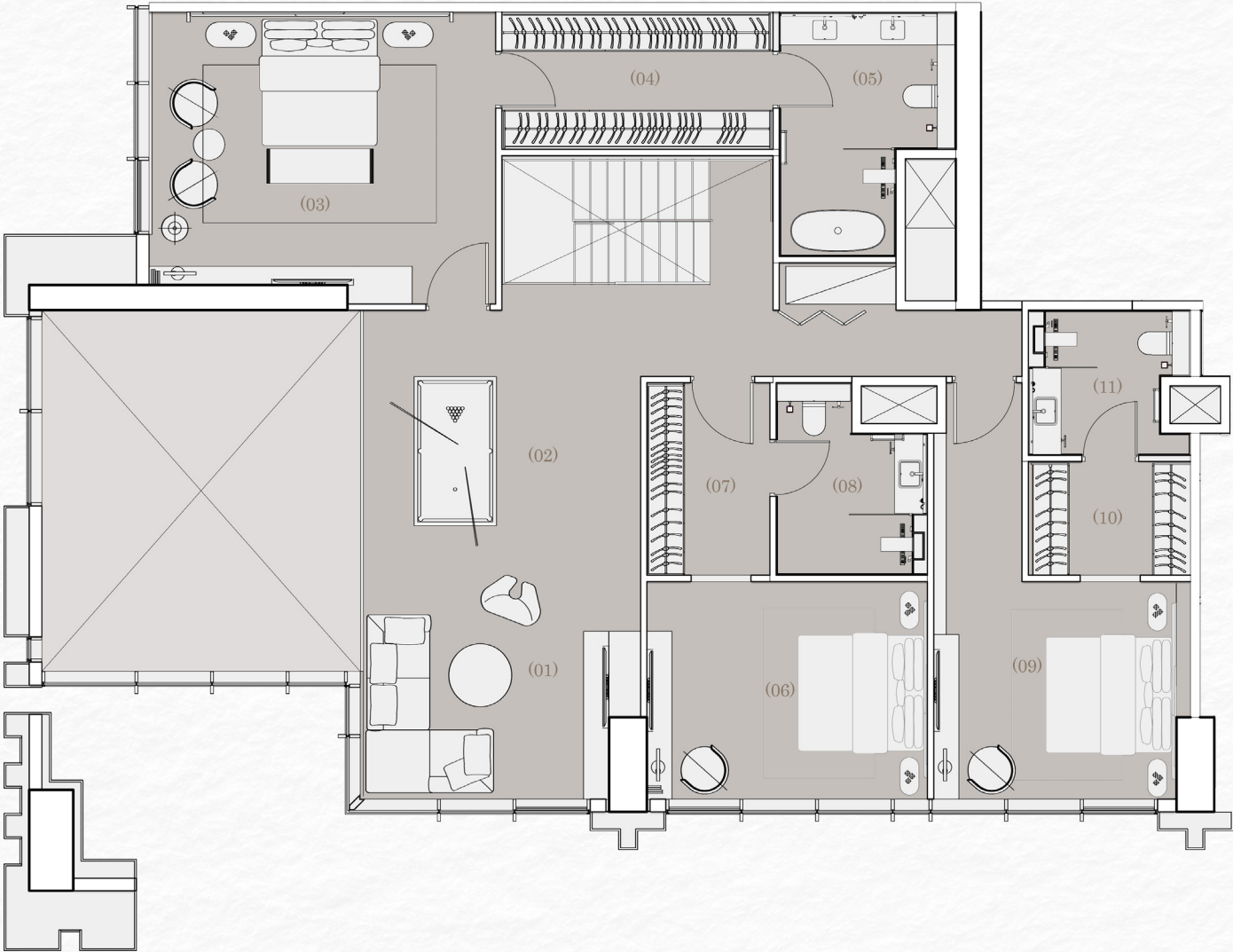
The visuals, plans, layouts, data, and other information presented in this brochure are for illustrative purposes only and are subject to modification until the project reaches its final 'as-built' stage.

3 BEDROOM DUPLEX

UNIT AREA 583 sqm

UPPER FLOOR

01	Living Space	4.4m x 3.8m	07	Dressing	2.0m x 3.0m
02	Billiard Lounge	4.4m x 3.8m	08	Master Bathroom	2.4m x 3.0m
03	Master Bedroom	5.5m x 4.3m	09	Master Bedroom	4.0m x 3.4m
04	Dressing	4.3m x 2.1m	10	Dressing	2.6m x 1.8m
05	Master Bathroom	2.8m x 3.8m	11	Master Bathroom	2.6m 2.3m
06	Master Bedroom	4.5m x 3.4m			



DISCLAIMER:

The visuals, plans, layouts, data, and other information presented in this brochure are for illustrative purposes only and are subject to modification until the project reaches its final 'as-built' stage.



PARTNERS & COLLABORATORS

DESIGN PARTNERS:



CONSULTANT PARTNERS:



HOSPITALITY AND PROPERTY MANAGEMENT:



CONSTRUCTION PARTNERS:



For More Information Click Here

Address:

205 by Arkan Palm, El Sheikh Zayed, Giza, Egypt

Sales Office:

Arkan Plaza, El Sheikh Zayed, Giza, Egypt

Email: info@arkanpalm.com

Hotline: 15760



ARKAN PALM