



RAMADA RESIDENCES ~ By Lincoln





# Where Design Meets Distinction

A G+6 branded apartments in Dubai South, Ramada Residences By Lincoln blends modern design with exclusive amenities for a lifestyle of comfort and elegance

# WYNDHAM

HOTELS & RESORTS

# WYNDHAM GLOBAL

HOSPITALITY LEADER

Wyndham Hotels & Resorts is the world's largest hotel franchising company, with a portfolio of trusted brands across more than 95 countries. Renowned for its commitment to quality, value, and exceptional guest experiences, Wyndham offers a diverse range of accommodations that cater to both

# RAMADA®

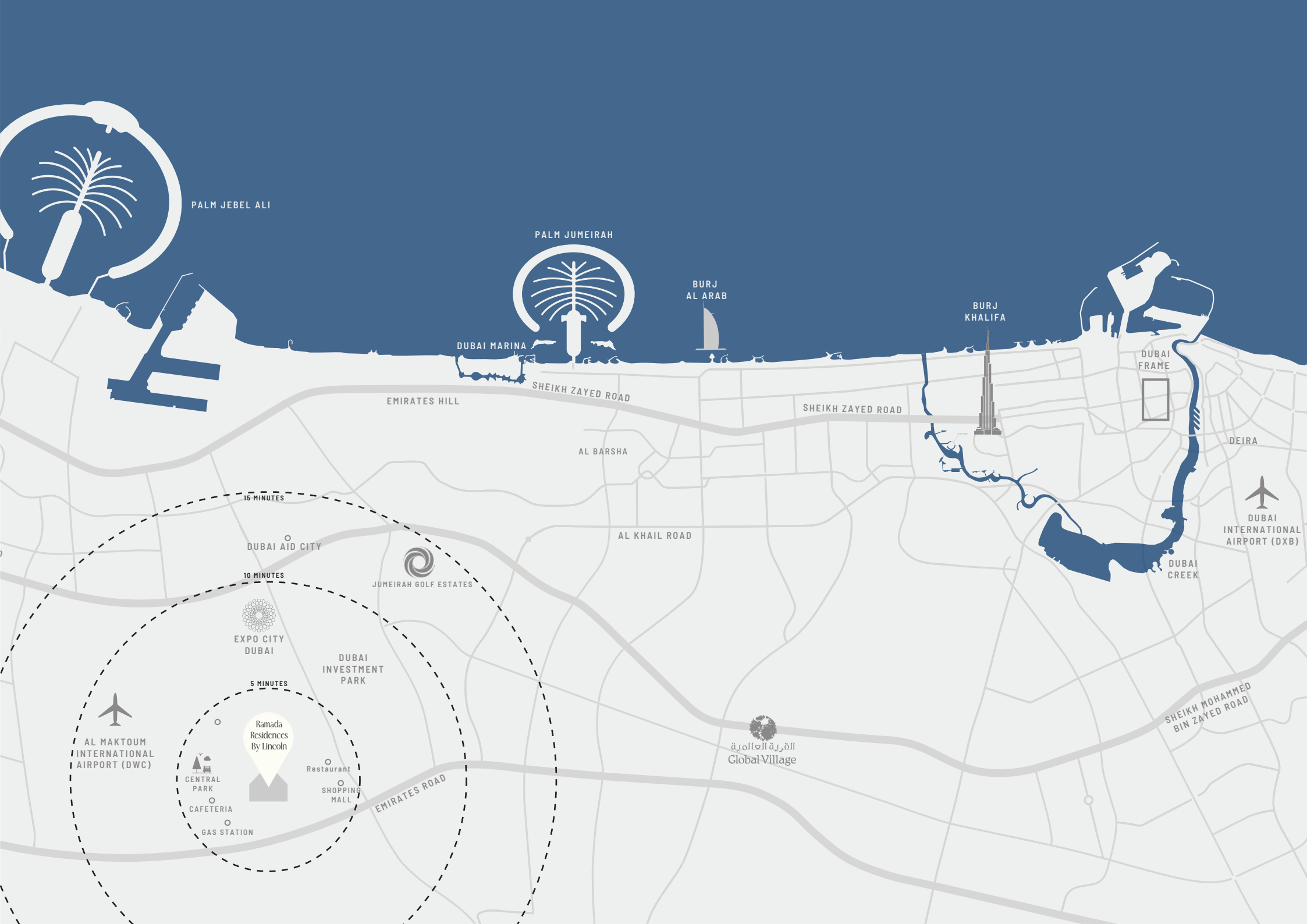
---

# RAMADA Trusted

Comfort Worldwide

Ramada, part of the renowned Wyndham Hotels & Resorts portfolio, is a globally trusted hospitality brand known for delivering comfort, convenience, and exceptional service. With five distinctive properties across Dubai—Downtown Dubai, JBR, Deira, Plaza Deira, and Barsha Heights—Ramada offers thoughtfully designed accommodations and modern amenities to create memorable stays for both leisure and business travelers.





PALM JEBEL ALI

PALM JUMEIRAH

DUBAI MARINA

BURJ  
AL ARAB

BURJ  
KHALIFA

DUBAI  
FRAME

DEIRA

DUBAI  
INTERNATIONAL  
AIRPORT (DXB)

DUBAI  
CREEK

SHEIKH MOHAMMED  
BIN ZAYED ROAD

EMIRATES HILL

SHEIKH ZAYED ROAD

SHEIKH ZAYED ROAD

AL BARSHA

AL KHAIL ROAD

15 MINUTES

DUBAI AID CITY

10 MINUTES

EXPO CITY  
DUBAI

DUBAI  
INVESTMENT  
PARK

5 MINUTES

Ramada  
Residences  
By Lincoln

CENTRAL  
PARK

CAFETERIA

GAS STATION

Restaurant

SHOPPING  
MALL

EMIRATES ROAD

القرية العالمية  
Global Village

AL MAKTOUM  
INTERNATIONAL  
AIRPORT (DWC)



# Closer Than You Think

From Ramada Residences By Lincoln



**In Front Of Project**

Community Park



**Behind Of Project**

Shopping & Retail



**Within the Community**

Healthcare Facilities



**Within the Community**

Educational Institutions



**10 Minutes**

Expo City



**15 Minutes**

Al Maktoum International Airport



**15 Minutes**

Dubai Parks & Resorts



**25 Minutes**

Burj Khalifa



**30 Minutes**

Palm Jebel Ali



**30 Minutes**

Burj Al Arab



**30 Minutes**

Dubai Marina



**35 Minutes**

Palm Jumeirah

# Seamlessly Connected To Dubai's Metro Future

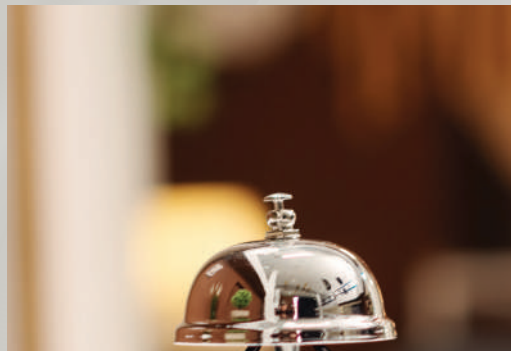
Seamless access to Dubai Metro  
(Blue & Red Lines), Etihad Rail,  
and major highways connects  
you to every corner of the UAE



# Where Every Road Leads To You

Effortless access to E611,  
Sheikh Zayed Road,  
Mohamed Bin Zayed  
Road, and Expo Road  
ensures you're always  
close to the city's pulse





## More Than a Residence – A Lifestyle

From the moment you arrive, every service reflects the elegance of a luxury stay. Gourmet in-residence dining, white-glove valet, concierge assistance, and personalized touches create a living experience that's seamless, stylish, and deeply personal

This is branded living, redefined. Where you don't just own a space — you inherit a lifestyle



Luxury Flows Beyond Limits

+20 Luxury Amenities

# Live Actively. Be Pampered



Concierge



Bellhop



Valet



In-Room Dining



Airport Shuttle



24H Reception



Travel Desk



High Speed  
Wi-Fi



Co-Working  
Lounge



+20 Luxury Amenities

# Where calm meets connection



Sky Pool



Jacuzzi



Sauna



Halo-Therapy  
Room



Open Activity  
Area



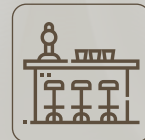
Meditation  
Zone



BBQ Area



Club Lounge



Sky Lounge



Kids Playground



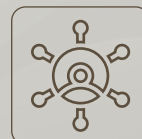
Gym



Jogging Track



Sports Court



Multipurpose  
Area



EV Charging







# Premium Comfort. Always Within Reach

Enjoy hotel-style living with premium services designed for your comfort — from concierge and valet to in-room dining and on-call care



Maintenance On-Demand



Laundry On Call



Housekeeping



Chauffeur On Call



Doctor On Call



Salon On Call



Where Love Meets  
Fine Living











# Floor Plans

## Ground Floor Plan



# Floor Plans

## Typical Floor Plan



# Floor Plans

## Rooftop Plan



## Units Layout

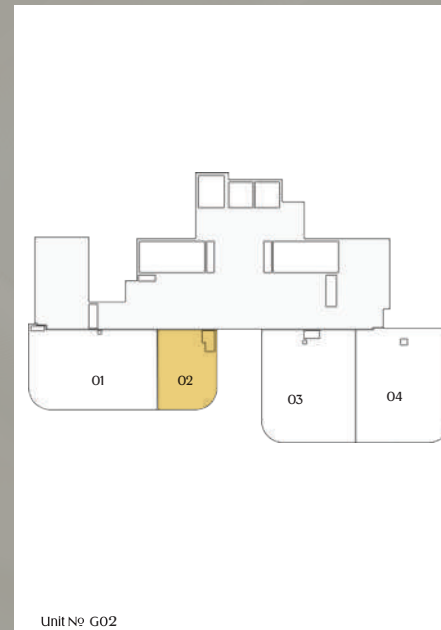
### Studio – Ground Floor

Type - A - Premium



Size:

40.64 SQ.M | 437.48 SQ.FT



## Units Layout

### Studio – Typical Floor

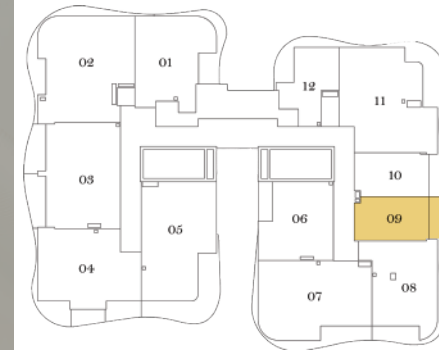
1st Floor - 6th Floor

Type - B -



Size:

38.65 SQ.M | 415.88 SQ.FT



Unit No 109 - 209 - 309 - 409 - 509 - 609

## Units Layout

### Studio – Typical Floor

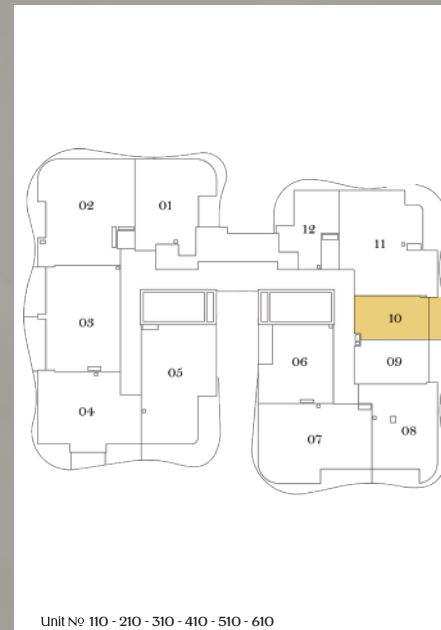
1st Floor - 6th Floor

Type - C -



Size:

37.8 SQ.M | 406.72 SQ.FT



## Units Layout

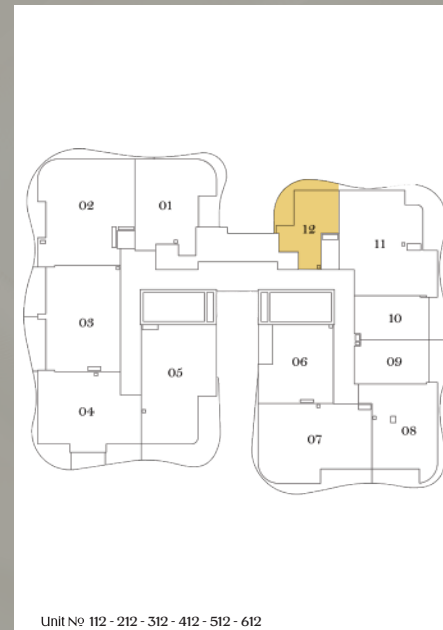
### Studio – Typical Floor 1st Floor – 6th Floor

Type – D –



Size:

41.84 SQ.M | 450.19 SQ.FT



## Units Layout

# 1 Bedroom – Typical Floor

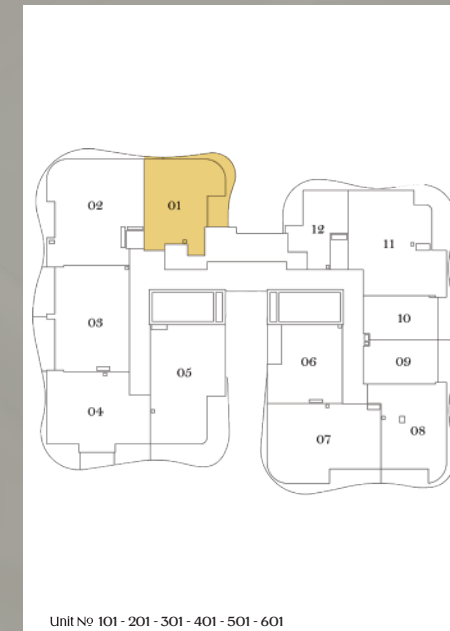
1st Floor - 6th Floor

Type - A -



Size:

70.15 SQ.M | 754.81 SQ.FT



## Units Layout

# 1 Bedroom – Typical Floor

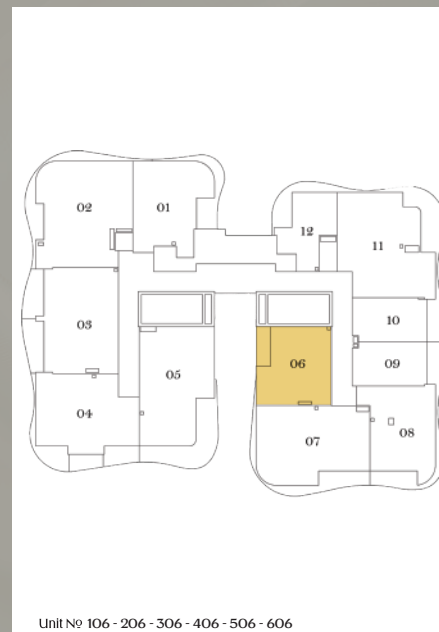
1st Floor - 6th Floor

Type - B -



Size:

54.42 SQ.M | 585.55 SQ.FT



## Units Layout

# I Bedroom – Typical Floor

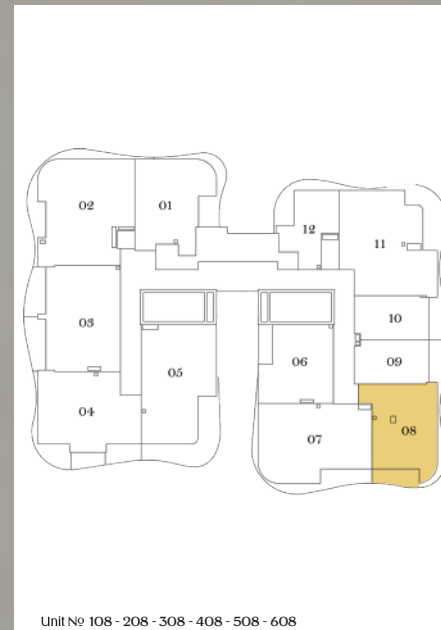
1st Floor - 6th Floor

Type - C -



Size:

68.15 SQ.M | 701.01 SQ.FT



## Units Layout

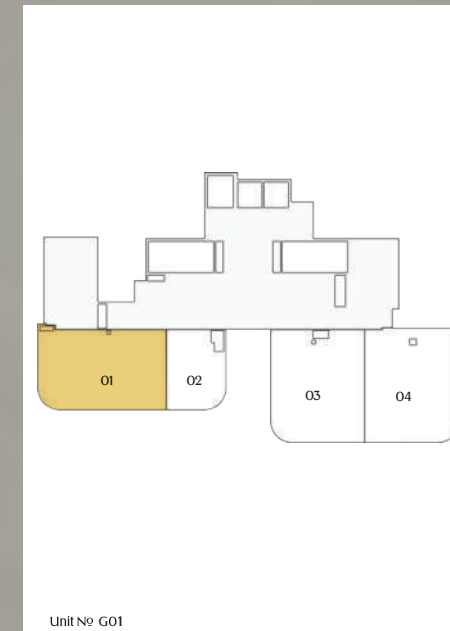
### 2 Bedroom – Ground Floor

Type - A - Premium



Size:

96.17 SQ.M | 1035.25 SQ.FT



## Units Layout

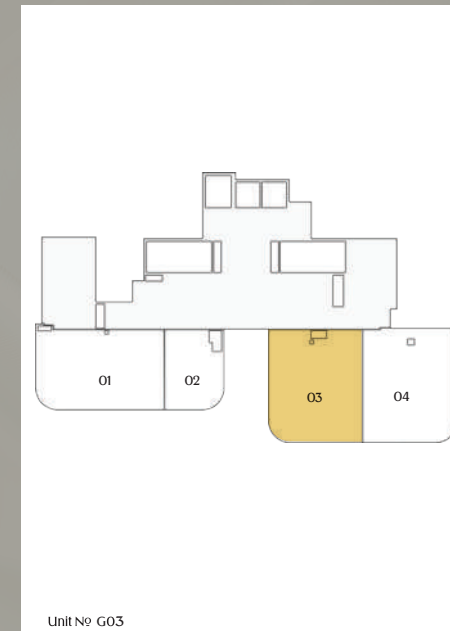
### 2 Bedroom – Ground Floor

Type - B - Premium



Size:

95.99 SQ.M | 1033.26 SQ.FT



## Units Layout

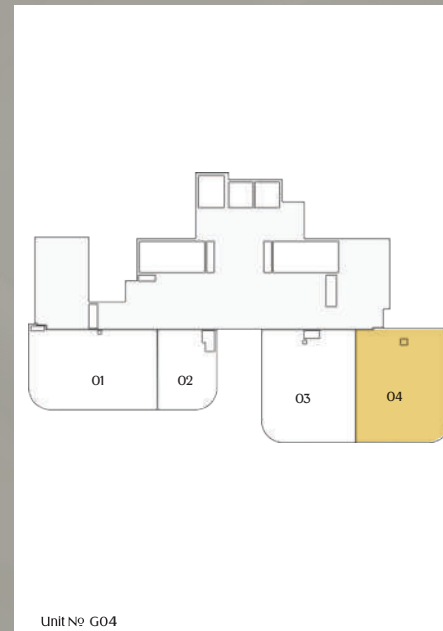
### 2 Bedroom – Ground Floor

Type - C - Premium



Size:

101.18 SQ.M | 1089.12 SQ.FT



## Units Layout

### 2 Bedroom – Typical Floor

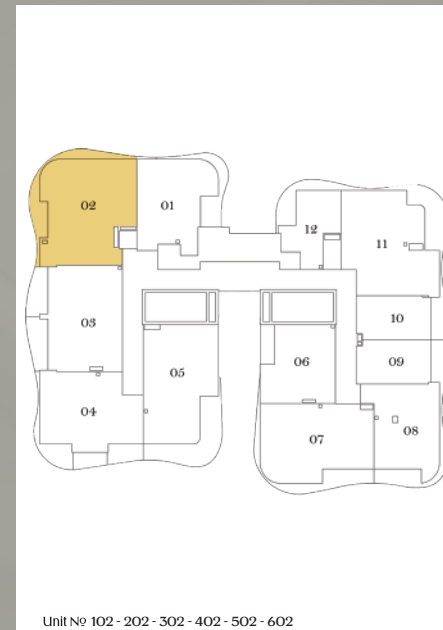
1st Floor - 6th Floor

Type - D -



Size:

100.82 SQ.M | 1084.82 SQ.FT

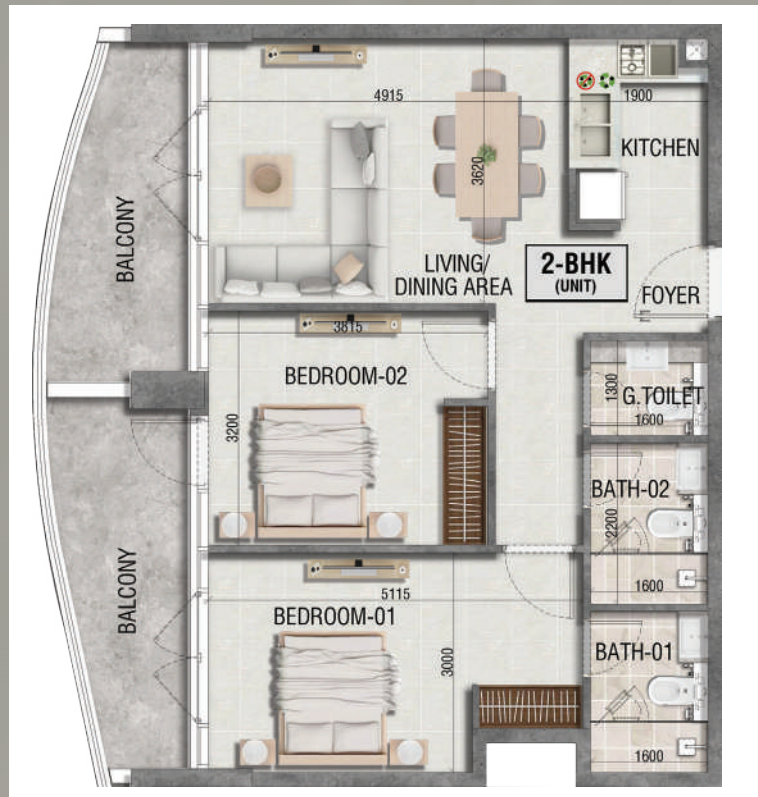


## Units Layout

### 2 Bedroom – Typical Floor

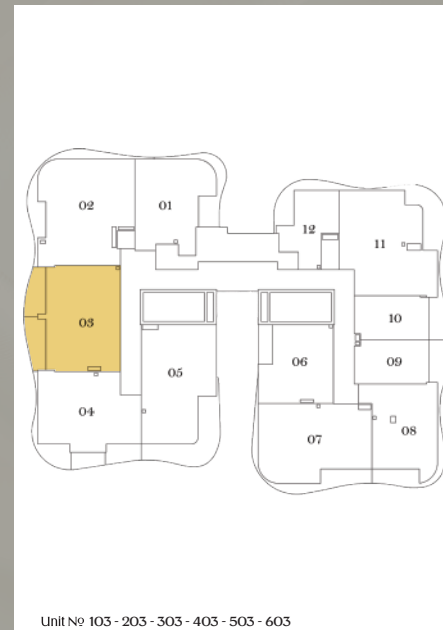
1st Floor - 6th Floor

Type - E -



Size:

90.61 SQ.M | 974.96 SQ.FT

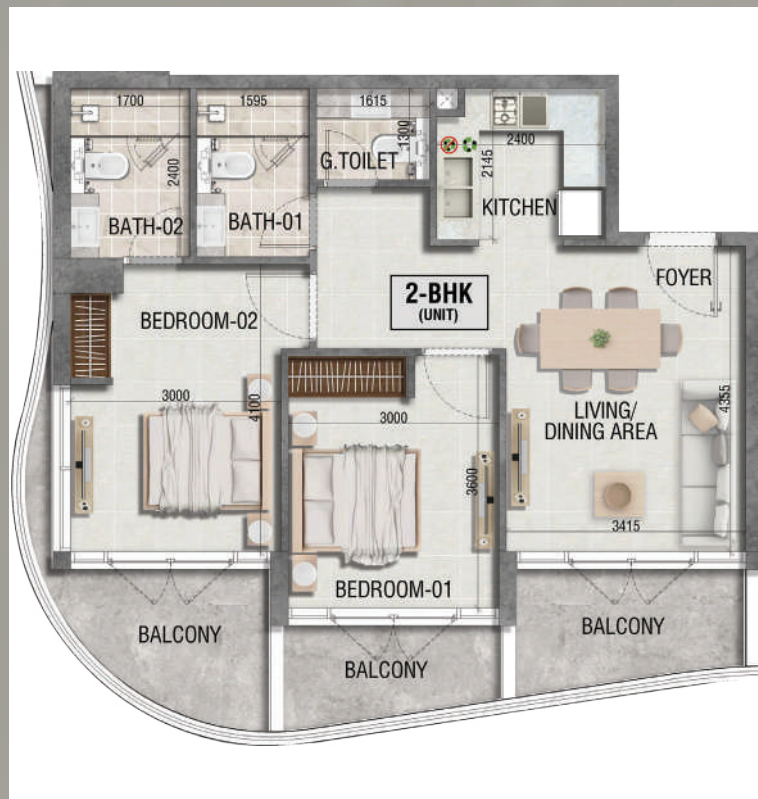


## Units Layout

### 2 Bedroom – Typical Floor

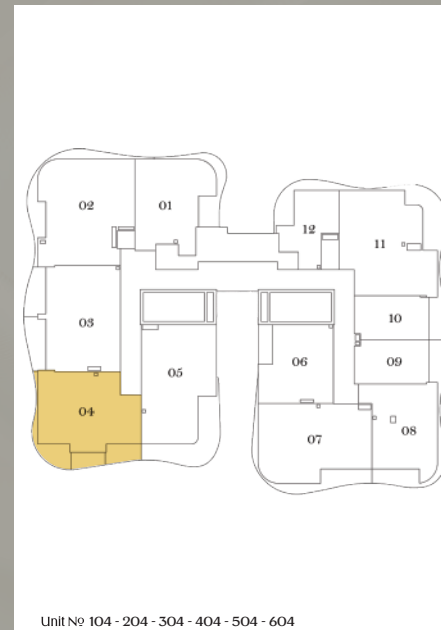
1st Floor - 6th Floor

Type - F -



Size:

87.71 SQ.M | 943.7 SQ.FT



## Units Layout

### 2 Bedroom – Typical Floor

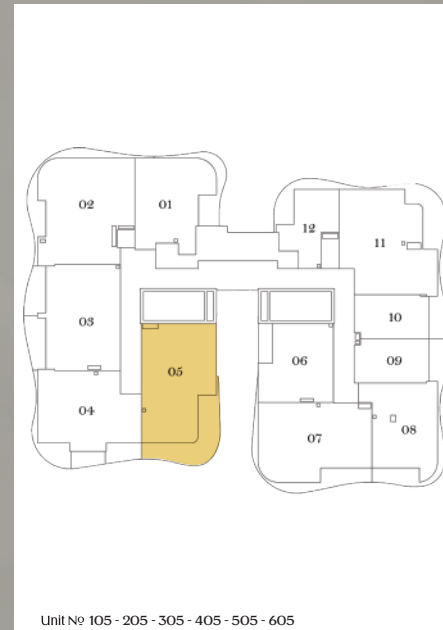
1st Floor - 6th Floor

Type - G -



Size:

97.55 SQ.M | 1049.63 SQ.FT



## Units Layout

### 2 Bedroom – Typical Floor

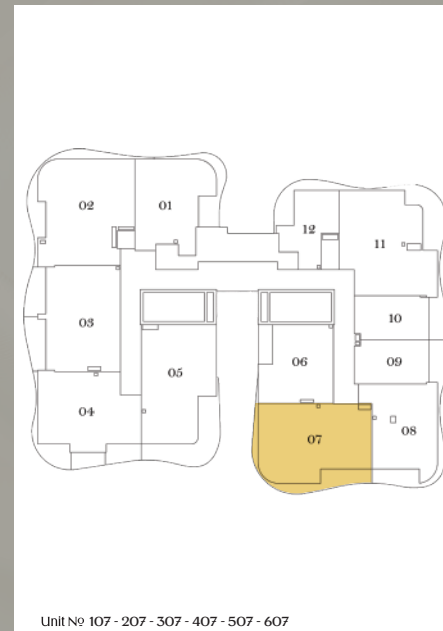
1st Floor - 6th Floor

Type - H -



## Size:

91.87 SQ.M | 988.52 SQ.FT



## Units Layout

### 2 Bedroom – Typical Floor

1st Floor - 6th Floor

Type - I -



Size:

98.71 SQ.M | 1062.11 SQ.FT

