

PALM CENTRAL

PRIVATE RESIDENCES

NAKHEEL | PALM JEBEL ALI

PALM CENTRAL PRIVATE RESIDENCES

A CALM CALLED HOME

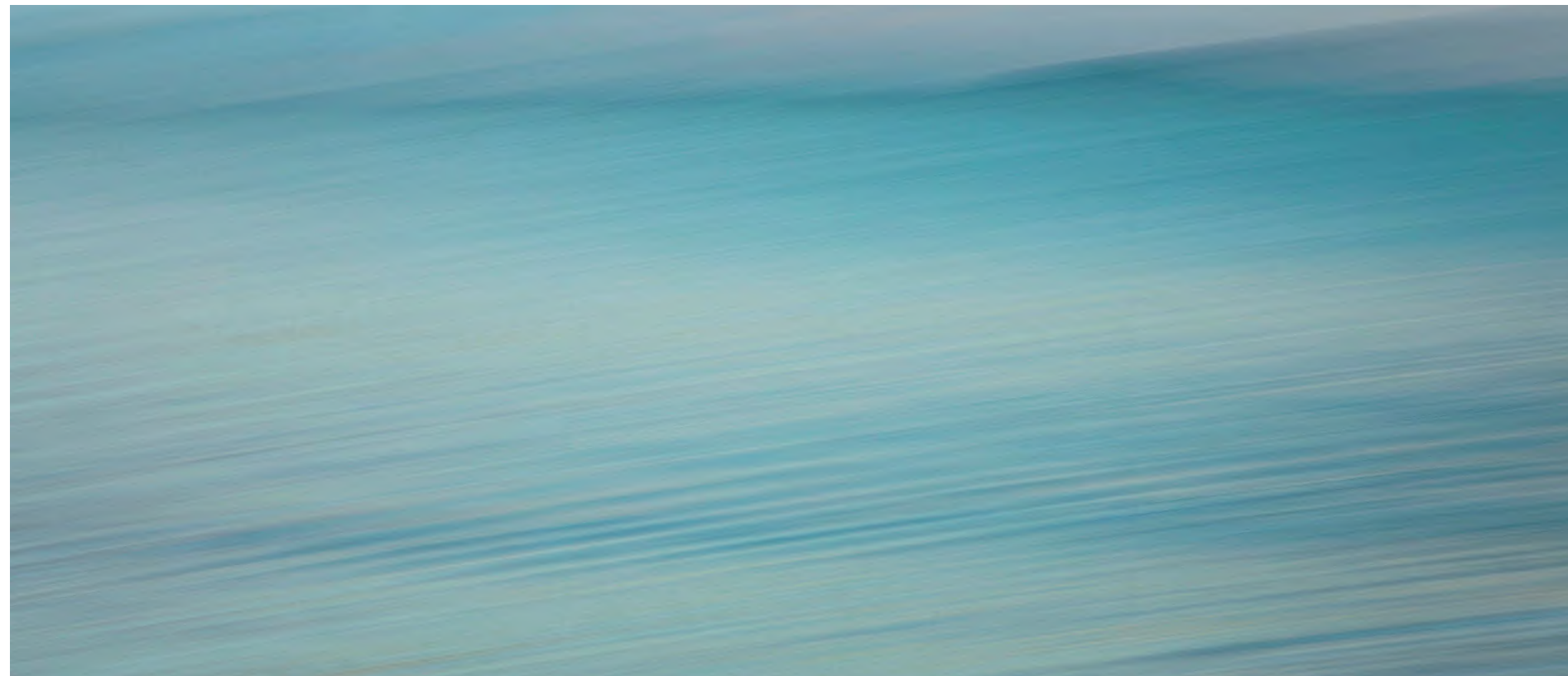
Set on the iconic Palm Jebel Ali, Palm Central Private Residences is a place where the sea and sky define the rhythm of each day. Here, calm isn't designed; it's born from the tides that shape the shore and held by the horizon in every direction. Life moves to the gentle pulse of this resort-style destination, where every moment is framed by water, light, and infinite ease.





INTRODUCTION

WHERE HOME IS SHAPED BY THE HORIZON



Palm Central Private Residences is a collection of 220 contemporary, resort-style homes set across three elegant buildings at the heart of the island. Its stepped architecture opens each residence to uninterrupted views across Palm Jebel Ali, from sunrise to starlight.

Each home is an expression of serenity and connection, defined by open-plan layouts, natural textures, and a quiet sense of prestige that reflects the essence of island living.



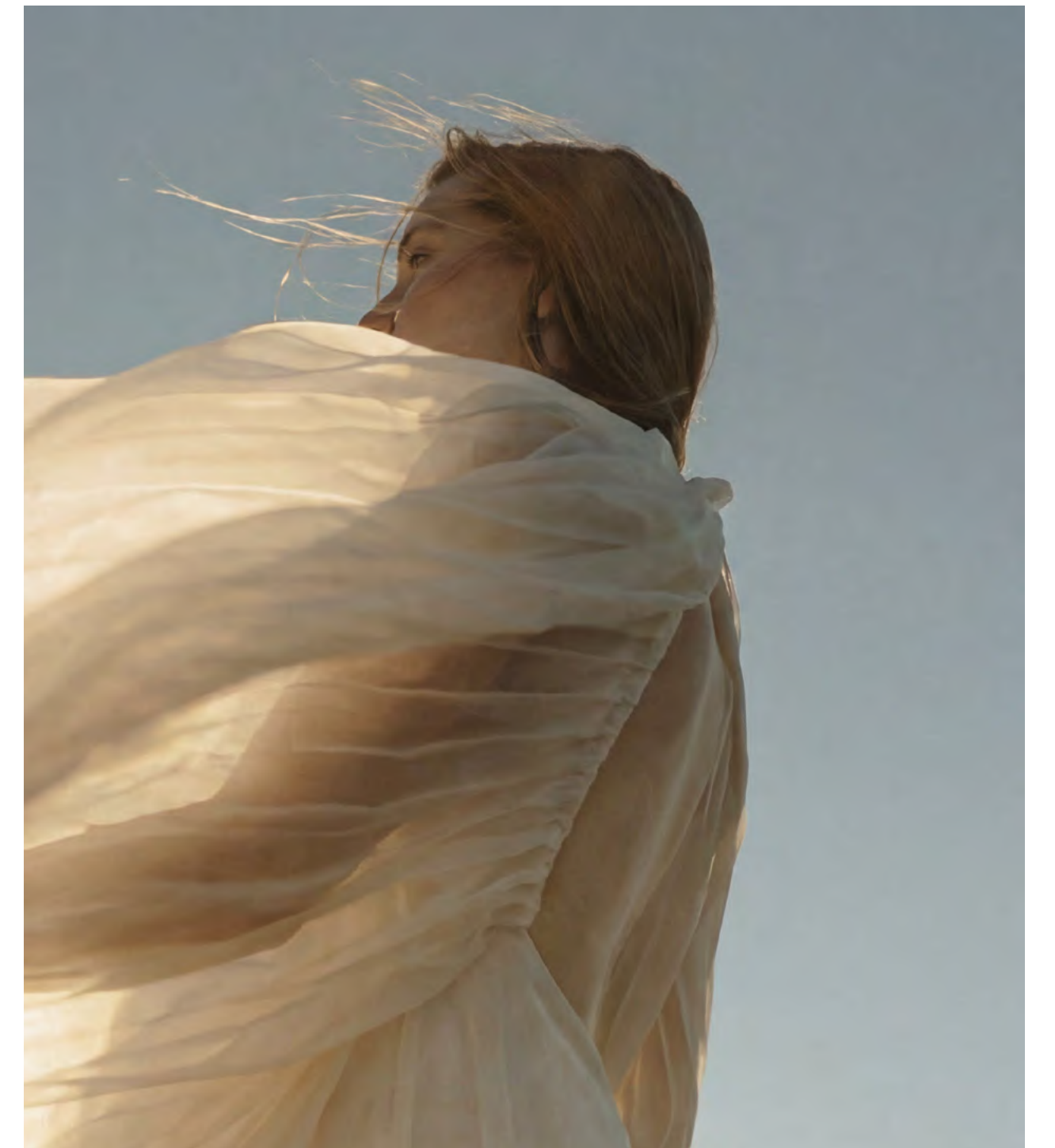




THE DESTINATION

A BALANCE OF MOVEMENT AND CALM

Palm Central Private Residences lies along the Spine of Palm Jebel Ali, the island's vibrant central location lined with community centres, mosques, parks, and wellness hubs, as well as hospitality and leisure venues.



23 MIN TO BLUEWATERS ISLAND

25 MIN TO DWC AIRPORT

27 MIN TO MALL OF THE EMIRATES

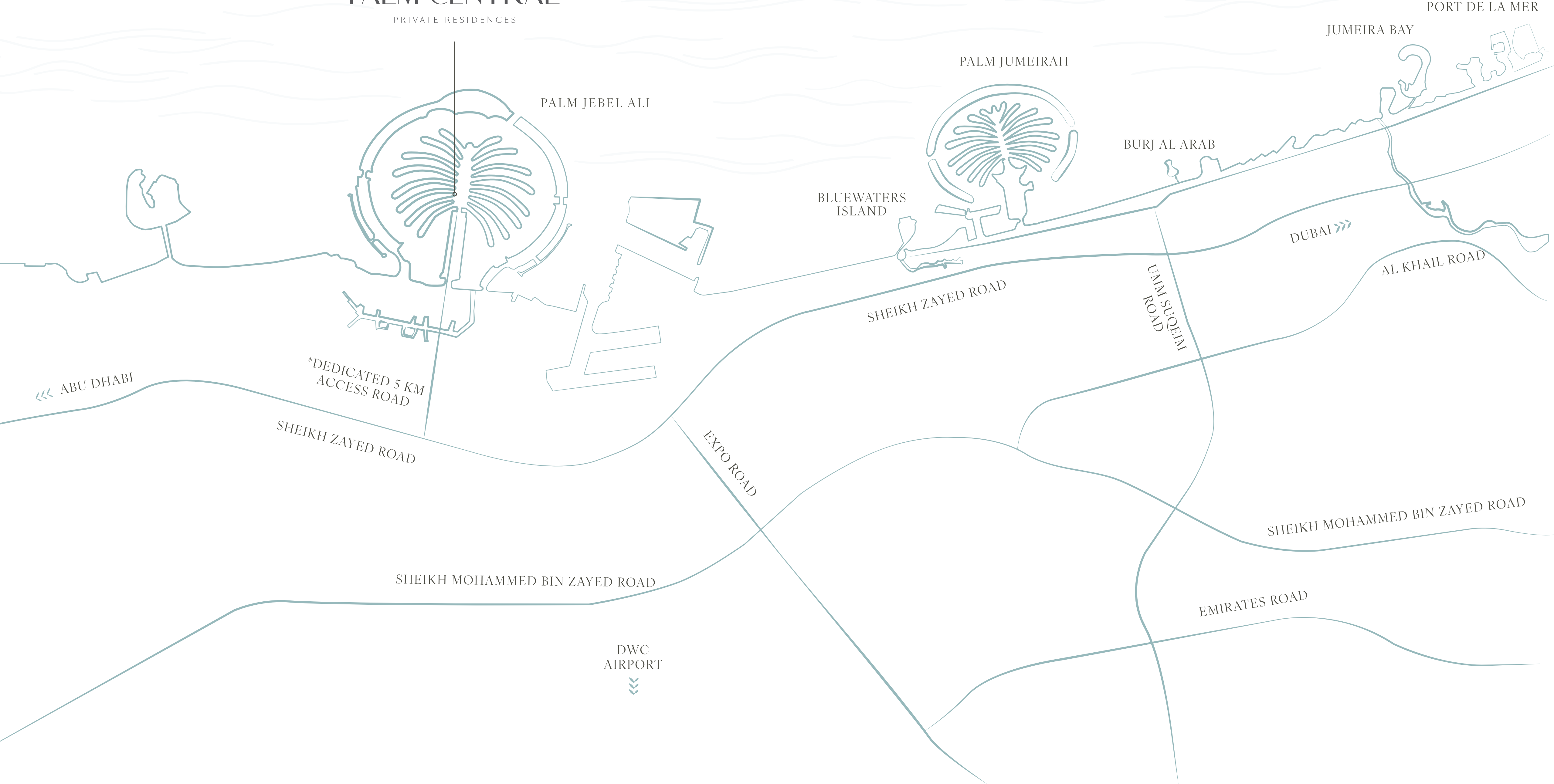
28 MIN TO PALM JUMEIRAH

30 MIN TO BURJ AL ARAB

40 MIN TO DXB AIRPORT

PALM CENTRAL

PRIVATE RESIDENCES



PALM JEBEL ALI

PALM JUMEIRAH

BLUEWATERS ISLAND

BURJ AL ARAB

JUMEIRA BAY

PORT DE LA MER

ABU DHABI

*DEDICATED 5 KM ACCESS ROAD

SHEIKH ZAYED ROAD

SHEIKH ZAYED ROAD

EXPO ROAD

UMM SUQEIM ROAD

DUBAI

AL KHAIL ROAD

SHEIKH MOHAMMED BIN ZAYED ROAD

SHEIKH MOHAMMED BIN ZAYED ROAD

EMIRATES ROAD

DWC AIRPORT

PALM CENTRAL

PRIVATE RESIDENCES

Rising gracefully from the Arabian Gulf, Palm Jebel Ali is an exquisite island realm just off the coast of Dubai. A city-scale destination where lush landscapes meet azure waters, it brings together refined residences, world-class hotels, and exceptional lifestyle experiences along pristine waterfronts.

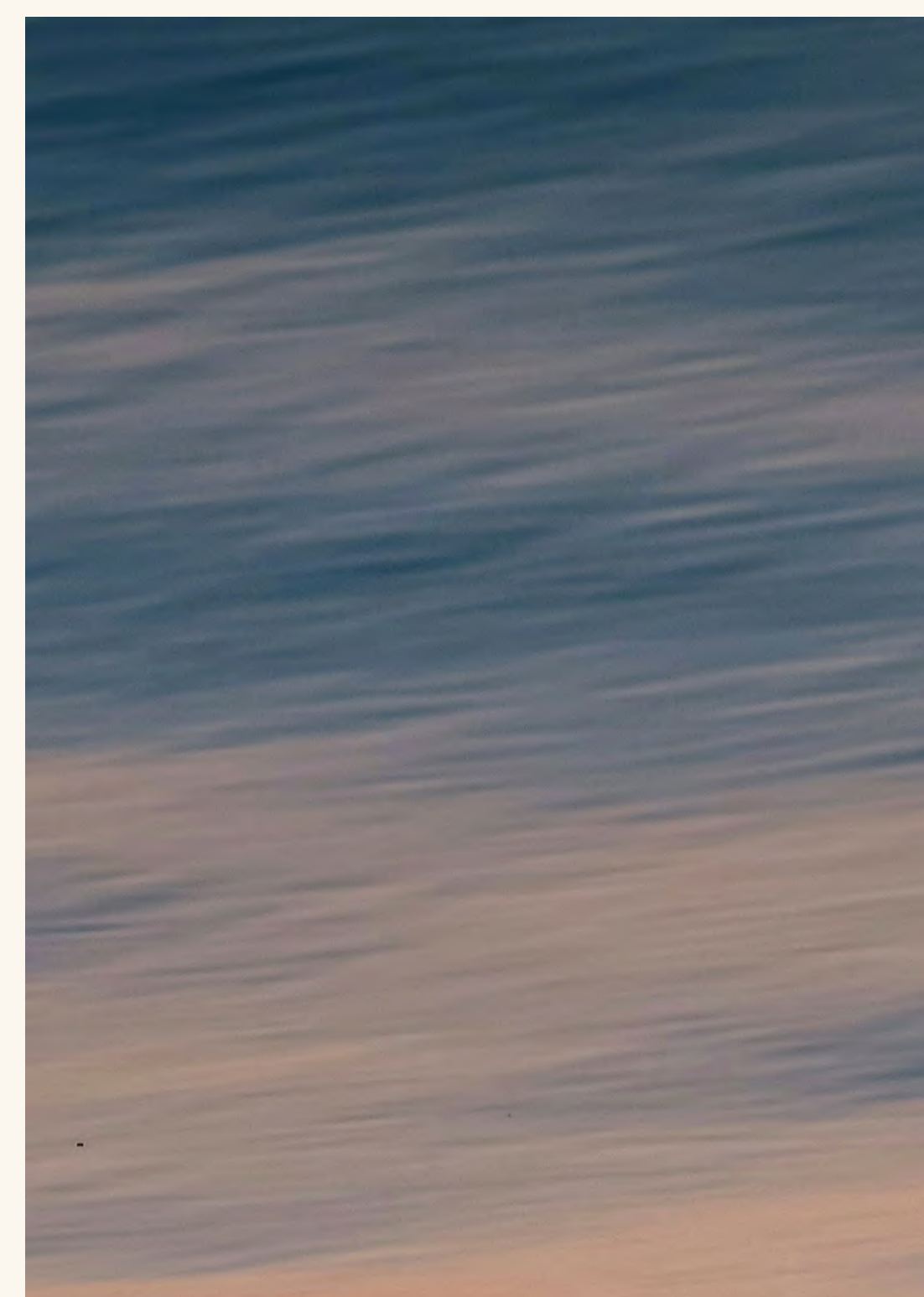
1. Community Centre & Mosque
2. Sports & Wellness Centre
3. Park





RESORT LIVING

MORE THAN A DESTINATION, A WAY OF LIVING



Palm Central Private Residences is a new expression of resort-style living on Palm Jebel Ali, a destination that redefines what it means to come home to calm.











Every element has been designed to echo the natural rhythm of the island, where water, light, and landscape come together in quiet harmony.

Sunlight moves through open spaces, water mirrors the sky, and every detail has been shaped to restore a sense of harmony. It's a place to pause without stepping away, to slow down without losing touch, and to live in the gentle space between sea and home.





OUTDOOR AMENITIES

- 1. Padel Court
- 2. Outdoor Kids' Play Area
- 3. Outdoor BBQ
- 4. Outdoor Fitness Zone
- 5. Infinity Pool
- 6. Beach Volleyball
- 7. Event Lawn
- 8. Beach

INDOOR AMENITIES

- 9. Indoor Kids' Play Area
- 10. Clubhouse
- 11. Games Room
- 12. Gym with Fitness Studio
- 13. Lobby Lounge

DESIGNED IN HARMONY WITH THE SHORE



At Palm Central Private Residences, architecture and nature exist in quiet balance. Each home opens onto landscaped gardens that flow directly to the beach, creating a seamless connection between the indoors and the sea. Residents can step from their private retreat onto soft sand, enjoying the calm rhythm of the shoreline or the glow of the horizon at dusk.





The stepped architecture creates a distinctive silhouette that maximises views, privacy, and connection to the outdoors. The upper levels feature spacious residences with expansive terraces and unrivalled vistas, while the design integrates effortlessly with the surrounding landscape.

Ground-floor townhouses are thoughtfully positioned to open directly onto the landscaped deck and beach, uniting architectural elegance with coastal living.

Floor-to-ceiling glazing fills each residence with natural light and sweeping sea and skyline views, blurring the boundary between interior comfort and the beauty of resort living. By night, the softly illuminated façade reflects across the water, revealing a graceful form that blends with its coastal setting.



THE FIRST MOMENT OF CALM



Arrival at Palm Central Private Residences is defined by quiet sophistication. A signature drop-off framed by lush gardens and soft lighting creates a seamless, elegant welcome. Thoughtful detailing and covered access ensure every transition feels effortless.

Inside, the double-height lobby sets a refined tone through natural textures, curated materials, and soft light. With exclusive lounges and an outdoor terrace overlooking the gardens and the beach, it offers a calm and connected space to unwind, meet, or simply pause.



LOBBY





WHERE MOVEMENT MEETS PAUSE

Designed for both activity and ease, Palm Central Private Residences offers a complete lifestyle experience, including direct access to the beach, an infinity pool overlooking the water, a state-of-the-art gym with a private studio, dedicated children's play areas, and a stylish games room.

The elevated wellness deck invites moments of stillness, while the clubhouse provides an elegant social setting by day and a serene retreat by night.

UPPER TERRACE



INFINITY POOL



CLUBHOUSE



GAMES ROOM



YOGA STUDIO



GYM



GYM





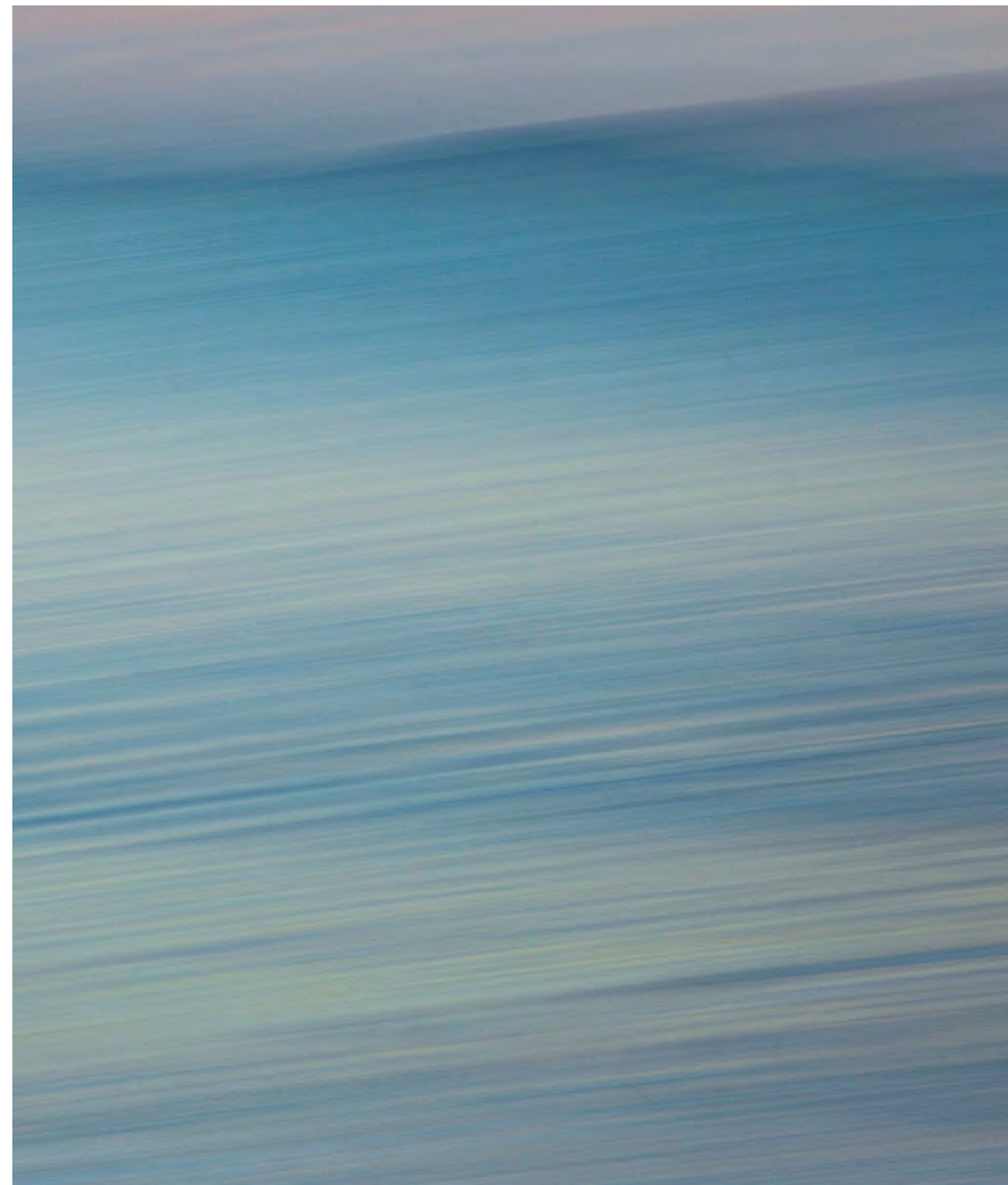
PRIVATE RESIDENCES

WHERE NOISE
FADES AND CALM
TAKES OVER

Palm Central Private Residences embodies a rare harmony of distinctive design and quiet living on Palm Jebel Ali. Here, calm is not an escape; it is the life you return to.

Inside, the sense of stillness deepens through timeless craftsmanship and warmth. Natural textures meet sculpted forms; light moves gently across stone, timber, and glass. Each space feels both open and personal. Interiors that don't seek attention, but invite it, expressing calm in its purest form.

SECLUDED



SHORES



PRIVATE BEACH





RESIDENCES

Palm Central Private Residences presents a refined collection of one- to four-bedroom apartments designed for light, comfort, and connection to the outdoors.



Three- and four-bedroom layouts feature open living spaces that flow onto balconies and generous terraces overlooking landscaped amenities, blending indoor ease with outdoor calm.

Contemporary finishes and bright interiors create an atmosphere of understated luxury throughout, while select residences include a maid's room for added versatility.

3-BEDROOM | KITCHEN, DINING AND LIVING ROOM



3-BEDROOM | DINING AND LIVING ROOM



3-BEDROOM | DINING AND LIVING ROOM



3-BEDROOM | BALCONY



3-BEDROOM | BALCONY



3-BEDROOM | MASTER BEDROOM



3-BEDROOM | BATHROOM



4-BEDROOM | KITCHEN, DINING AND LIVING ROOM



4-BEDROOM | BALCONY



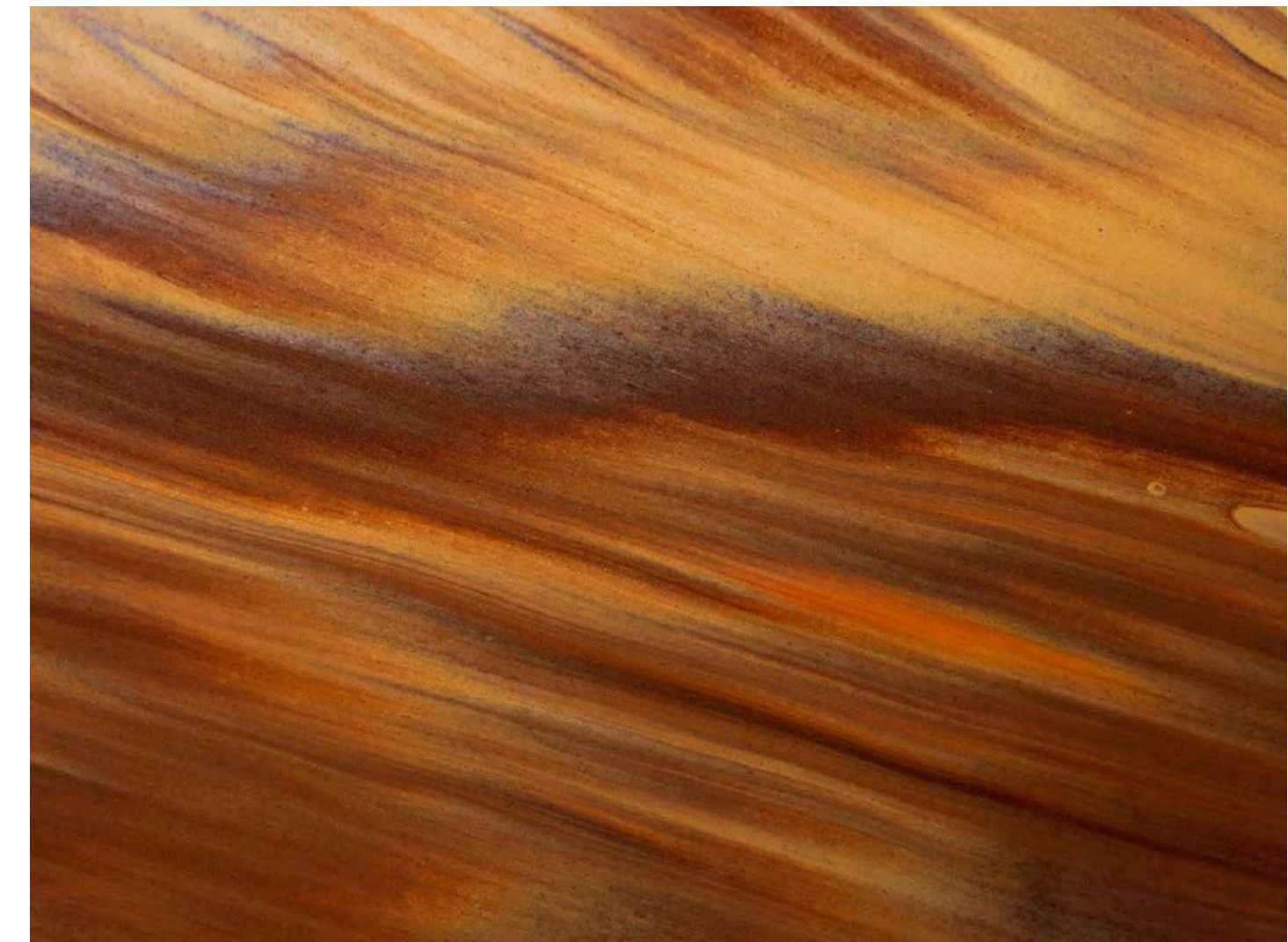
4-BEDROOM | BATHROOM





TOWNHOUSES

The four- and five-bedroom townhouses with private garages combine architectural presence with coastal calm. Double-height living spaces amplify light and openness, creating a striking sense of scale while framing views of the horizon.



Each home enjoys direct access to landscaped gardens and the beach, while generous terraces extend the living areas outdoors, offering private spaces to relax and unwind, surrounded by nature and sea air.

5-BEDROOM TOWNHOUSE | TERRACE



5-BEDROOM TOWNHOUSE | LIVING ROOM



5-BEDROOM TOWNHOUSE | KITCHEN, DINING & LIVING ROOM





NAKHEEL

Nakheel is one of Dubai's leading master developers, shaping the city's skyline and lifestyle through visionary residential communities. Its legacy includes landmark achievements such as Palm Jumeirah, Dubai Islands and Palm Jebel Ali, iconic developments that continue to set new benchmarks in innovation, design and quality.

With a focus on exceptional homes and vibrant, sustainable neighbourhoods, each Nakheel project is thoughtfully designed to offer a harmonious balance of comfort, nature and well-being, featuring integrated green spaces, waterfront living and seamless access to world-class amenities.

Driven by a commitment to excellence and long-term value, Nakheel homes are crafted to enrich lives today and for generations to come.

A blurred landscape of a beach and ocean under a grey sky. The foreground shows a sandy beach with gentle waves lapping at the shore. The middle ground is dominated by the ocean, with soft, out-of-focus waves. The background is a flat, overcast sky. The overall image has a soft, dreamy quality due to the motion blur.

NAKHEEL