



ONE 6

— C O M P O U N D —



We develop vibrant residential, leisure,
tourism and commercial projects!

PTC Company is one of Egypt's leading real estate developers.

It was founded in 2015 to enrich the community through vibrant residential, leisure, tourism, and commercial projects.

Our services include planning, development, design, & construction of high-end modern residential buildings, smart residential buildings & resorts that use cutting-edge technologies.



WHY CHOOSE US ?

We are eager to achieve diversity in projects to meet all needs & expand geographically by targeting new cities & regions.

All our projects have integrated services with massive green spaces, allowing residents to enjoy a quiet & private life style away from the city's traffic.

We believe that approaching hundreds of new customers starts with one satisfied customer.

The best long term business strategies are good reputation, credibility & unique innovations.

We are keen on picking highly qualified team members that can uplift any project.

Our consultants, engineers & other parties guarantee excellence & meet the needs of our clients who demand sophistication & luxury.

PTC's name is now associated with providing new distinctive projects to suit all tastes.



ONE 6

NEXT GENERATION LIVING

Exclusive for its convenient location and relaxed living environment. Lying on the west side of Cairo,

ONE 6 combines the best of two worlds. It is adequately removed from the hustle and bustle of city life, yet close enough to El-sheikh Zayed vital attractions. The development is five minutes away from a number of other high-end residential and retail developments.



LOCATION

AN EXCEPTIONAL LOCATION

Strategically located in the heart of New Zayed , Cairo west. Facilitating the community's accessibility to the city & minutes away from Zayed most vital locations, shopping centers, schools, business districts & universities.

5 MIN

WASLET DAHSHOUR

7 MIN

MALL OF ARABIA

10 MIN

MUST UNIVERSITY

15 MIN

SMART VILLAGE

ONE 6

COMPOUND



MASTER PLAN LINEAR LAYOUT

DESERT OASIS

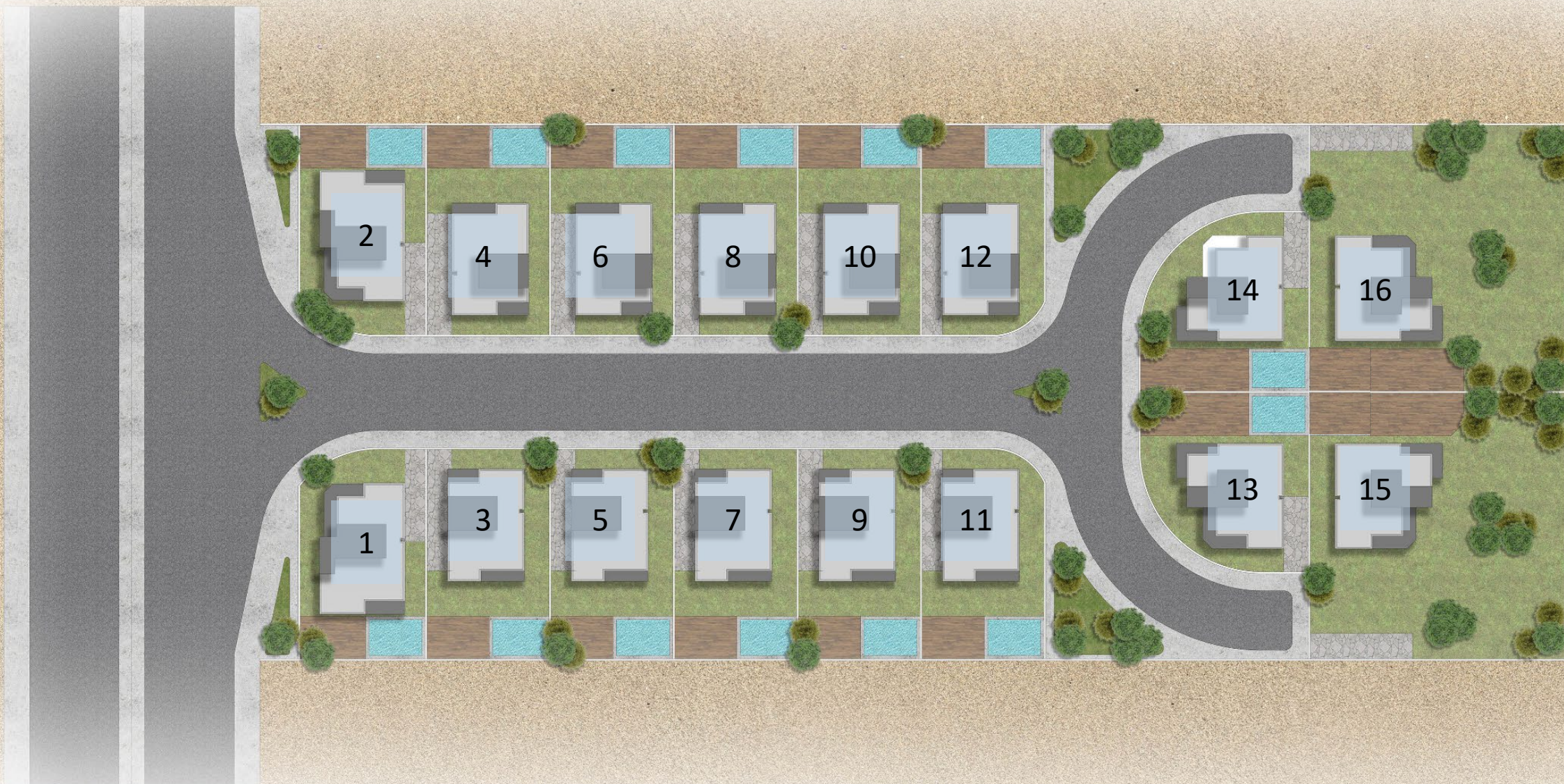
EVERLASTING GREEN

We offer amazing comfy homes located with vast spaces of landscape in ONE 6 which is haven of tranquility & luxury where trees , paths & water features provides large space to enjoy the wonderful outdoor area. ONE 6 your home is what you dreamed of.

DREAM HOUSE

MASTER PLAN

2D LAYOUT NUMBERED





LUXURY

ONE 6
COMPOUND

PTC
DEVELOPMENTS
Picking The Communities



ONE 6
COMPOUND

PTC
DEVELOPMENTS
Picking The Communities



ONE 6
COMPOUND

PTC
DEVELOPMENTS
Picking The Communities



ONE 6
COMPOUND

PTC
DEVELOPMENTS
Picking The Communities



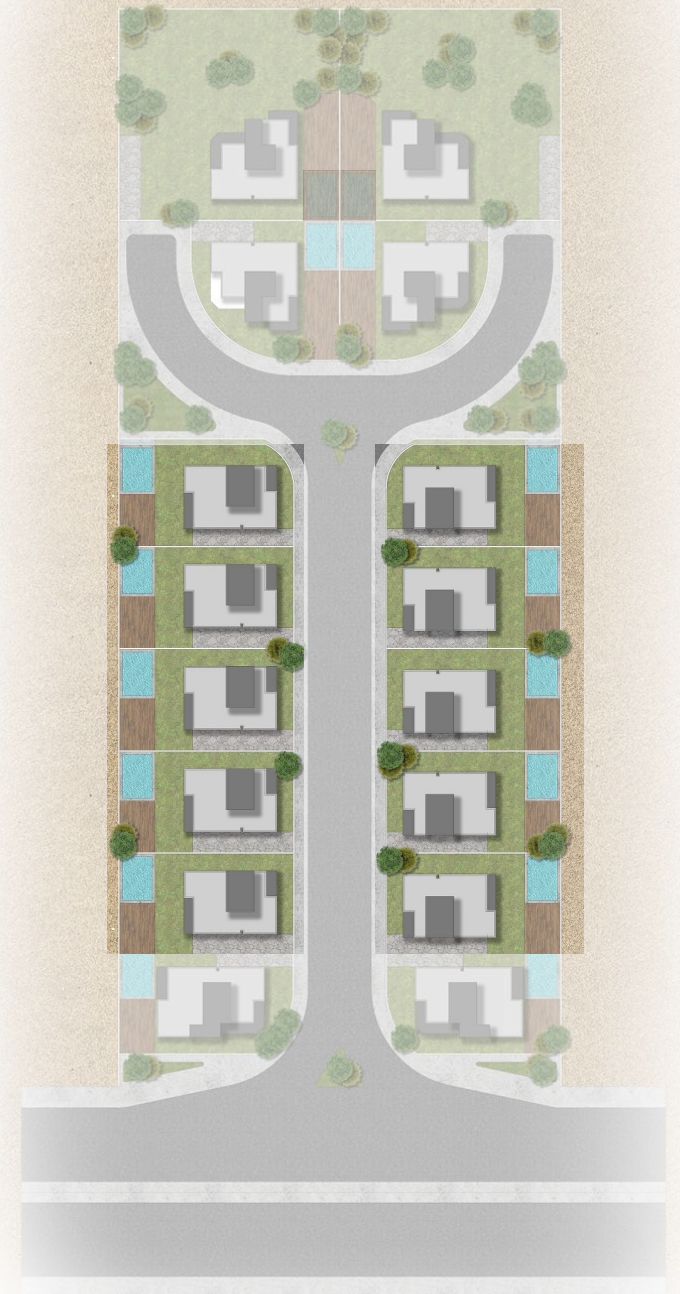
ONE 6
COMPOUND

PTC
DEVELOPMENTS
Picking The Communities



WE
RE
TRY

QUEEN
VILLA





FRONT VIEW

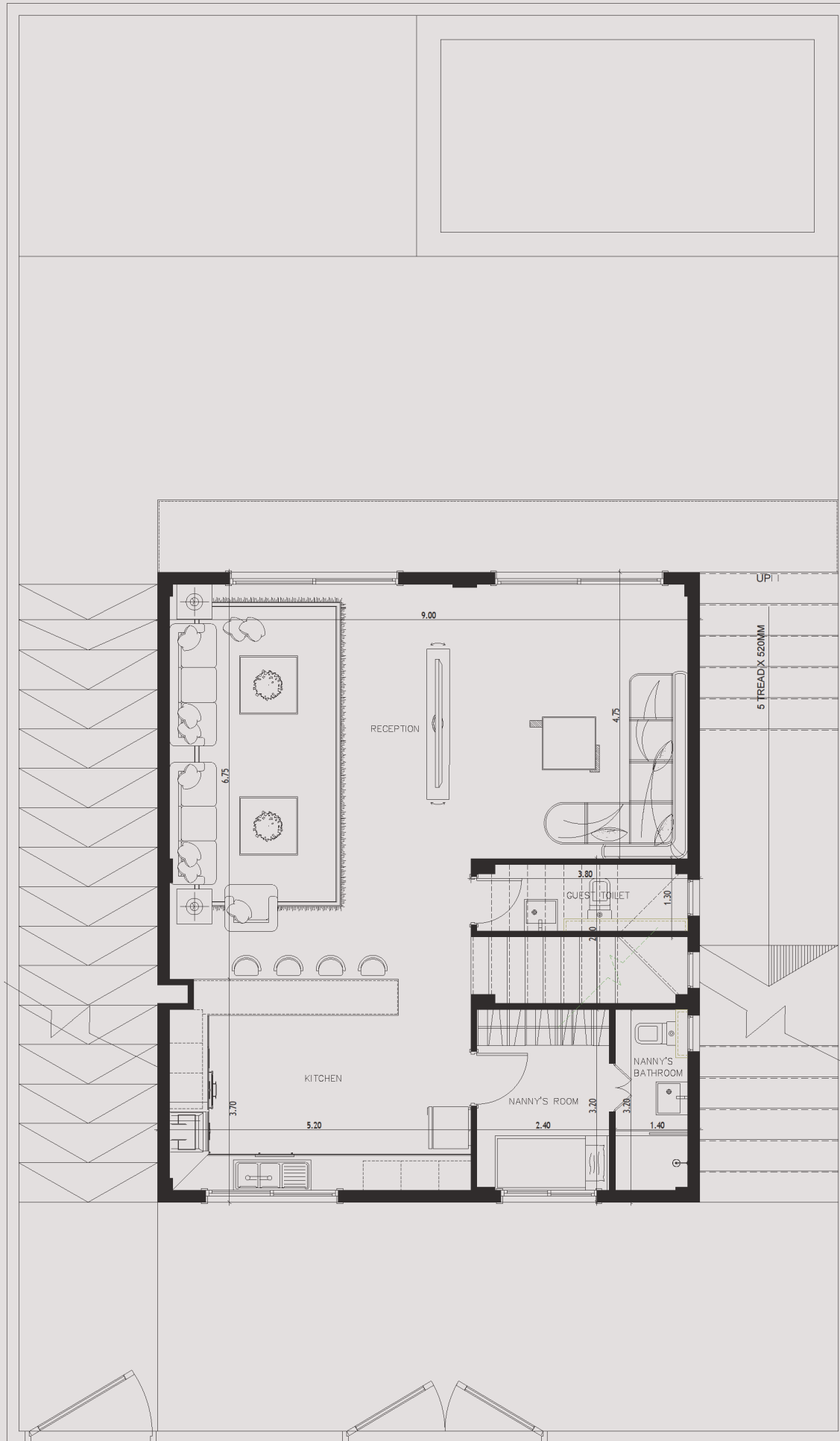
BACK VIEW





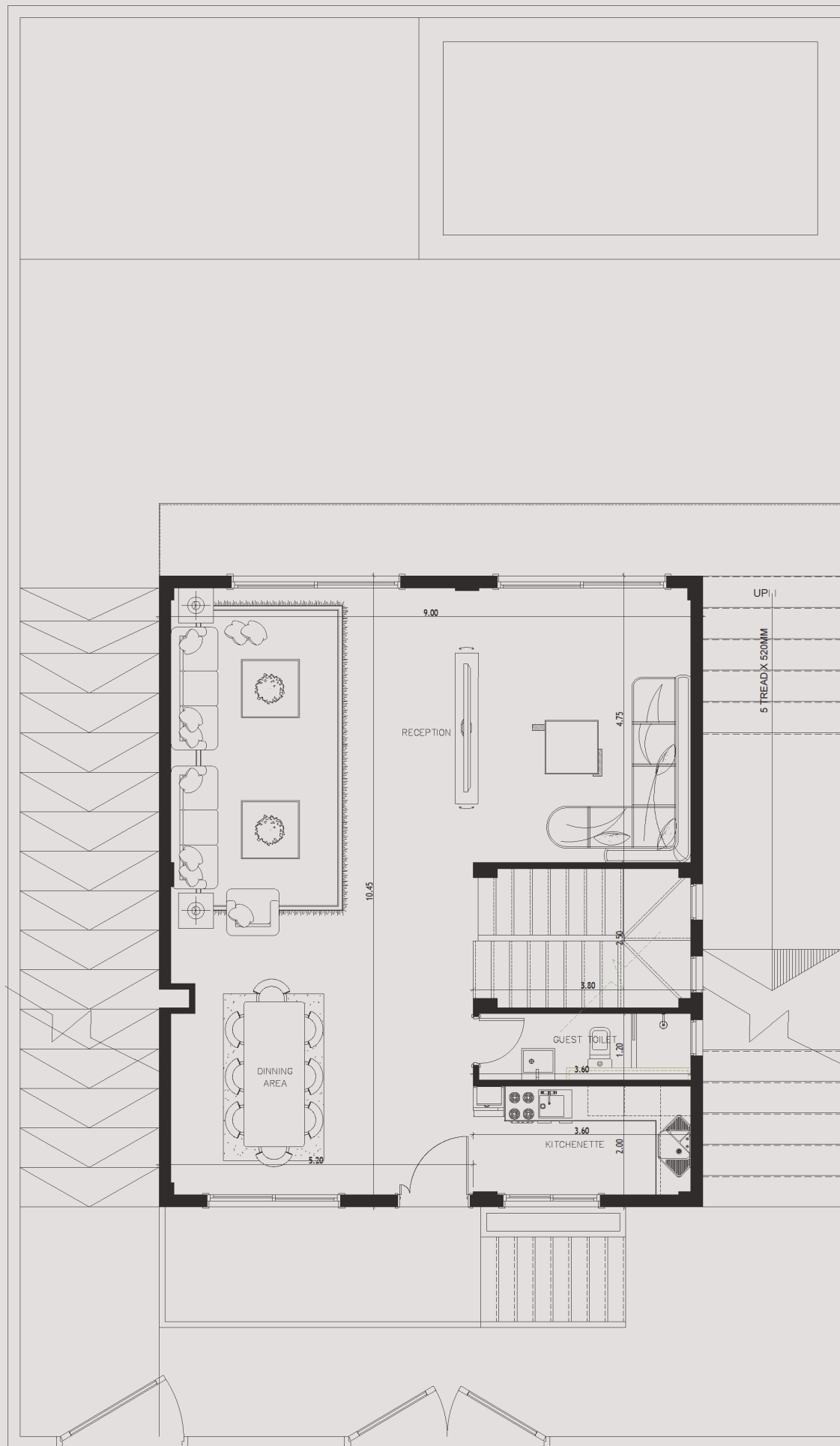
TOP VIEW

BASEMENT FLOOR PLAN



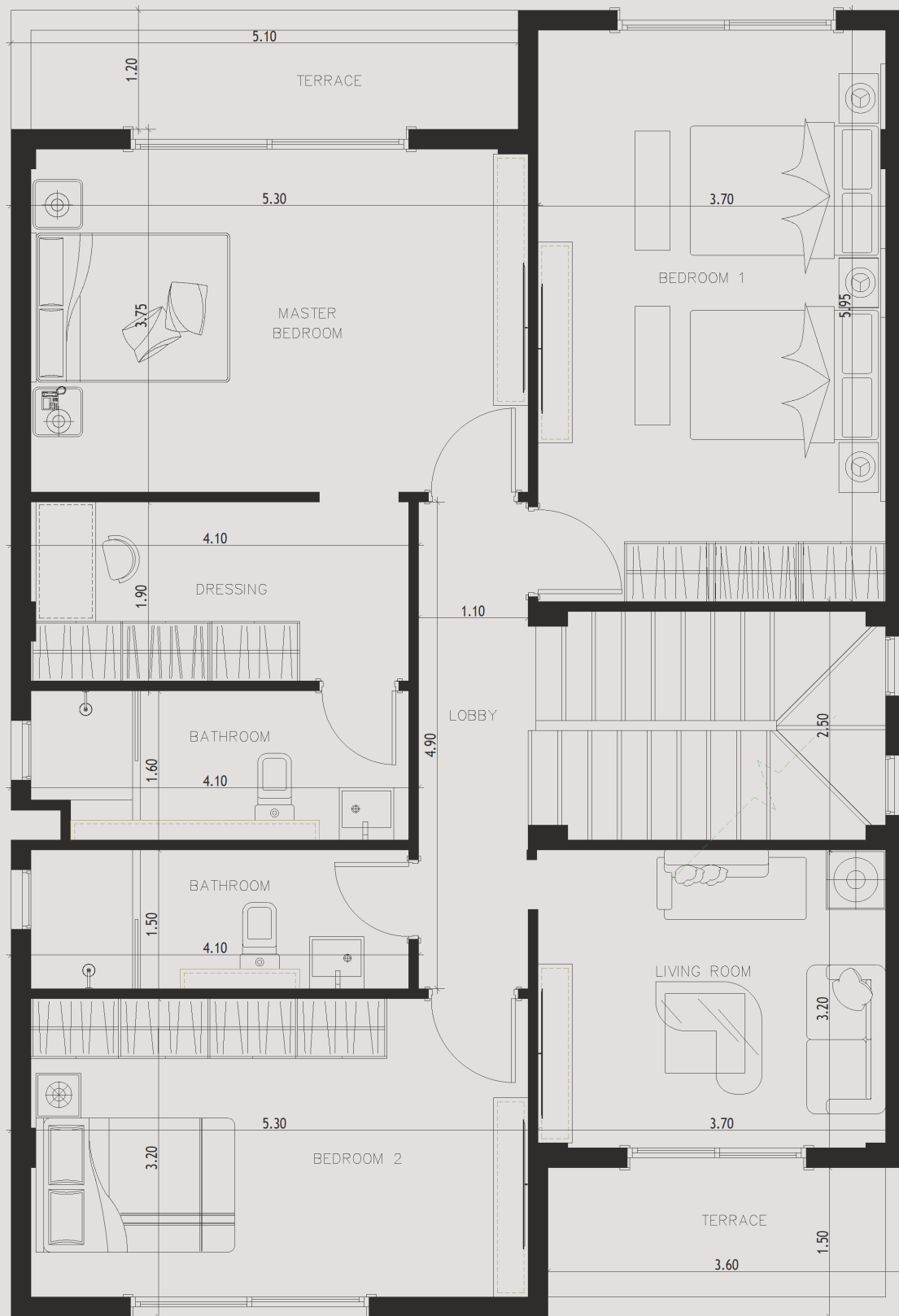
- RECEPTION 9.00 m² x 6.75 m² .
- KITCHEN 5.20 m² x 3.70 m² .
- NANNY'S ROOM 3.20 m² x 2.40 m² .
- NANNY'S BATHROOM 3.20 m² x 1.40 m² .
- GUEST TOILET 3.80 m² x 1.30 m² .

GROUND FLOOR PLAN



- RECEPTION 9.00 m² x 6.25 m² .
- DINNING AREA 4.20 m² x 5.20 m² .
- KITCHENNETE 3.60 m² x 2.00 m² .
- GUEST TOILET 3.60 m² x 1.20 m² .

FIRST FLOOR PLAN



- MASTER BEDROOM 5.30 m² x 3.75 m².
- DRESSING 4.10 m² x 1.90 m².
- MASTER BATHROOM 4.10 m² x 1.60 m².
- BEDROOM 1 5.95 m² x 3.70 m².
- BEDROOM 2 5.30 m² x 3.20 m².
- LIVING ROOM 3.70 m² x 3.20 m².
- BATHROOM 4.10 m² x 1.50 m².
- LOBBY 4.90 m² x 1.10 m².
- TERRACE 1 5.10 m² x 1.20 m².
- TERRACE 2 3.60 m² x 1.50 m².

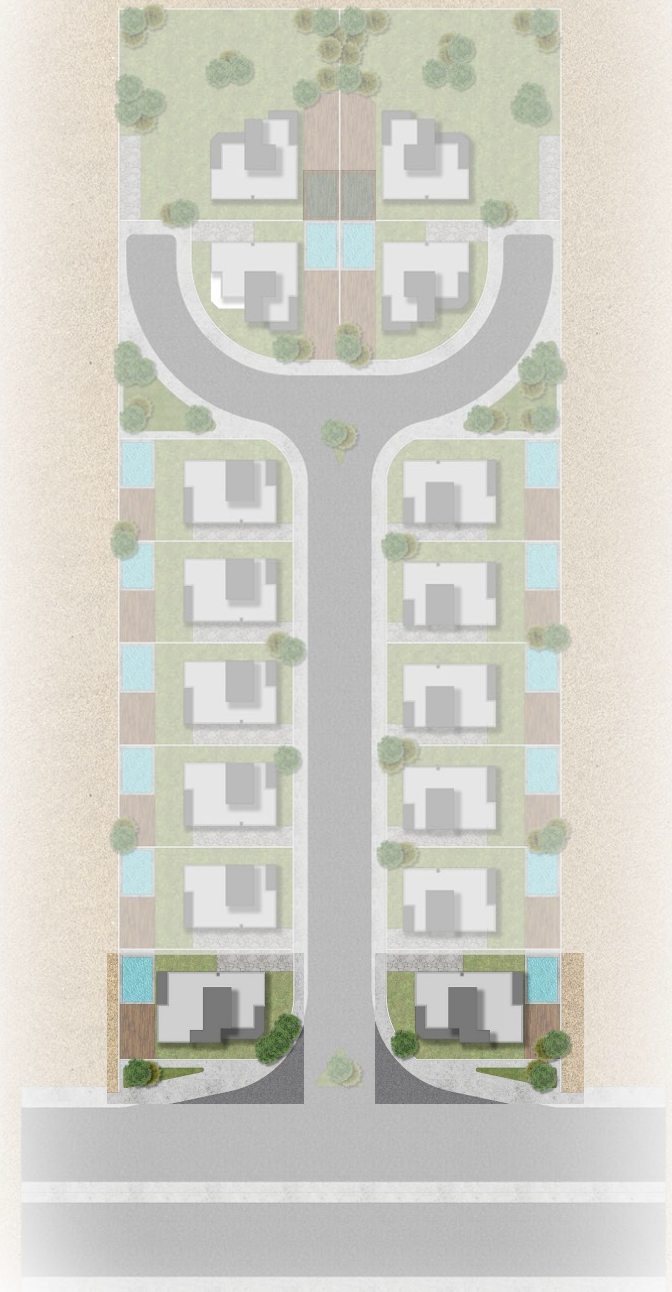
ROOF FLOOR PLAN



- LIVING ROOM 4.00 m² x 3.15 m² .
- BATHROOM 2.70 m² x 1.60 m² .

WE
ARE
TRY

KING
VILLA





FRONT VIEW

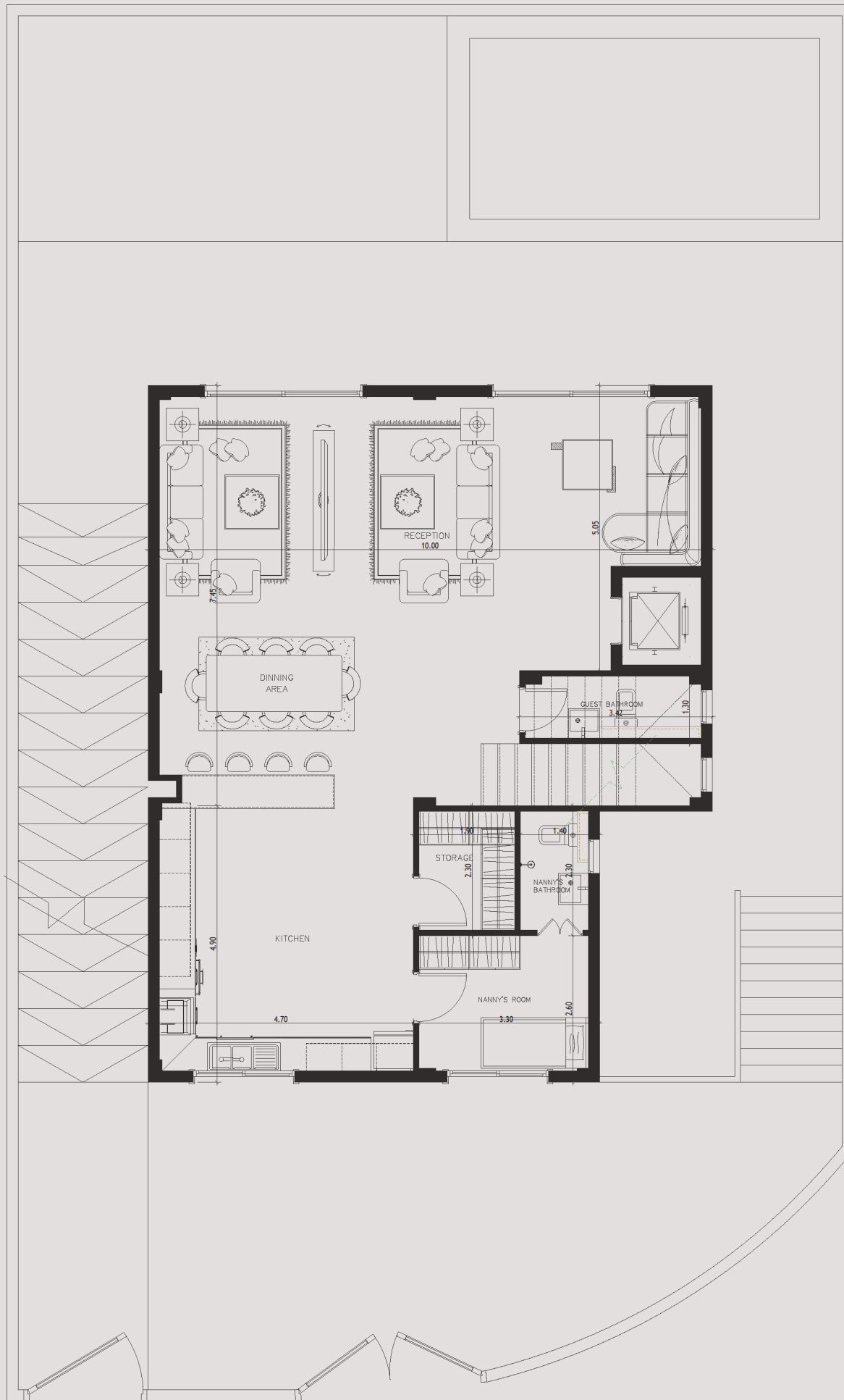
BACK VIEW





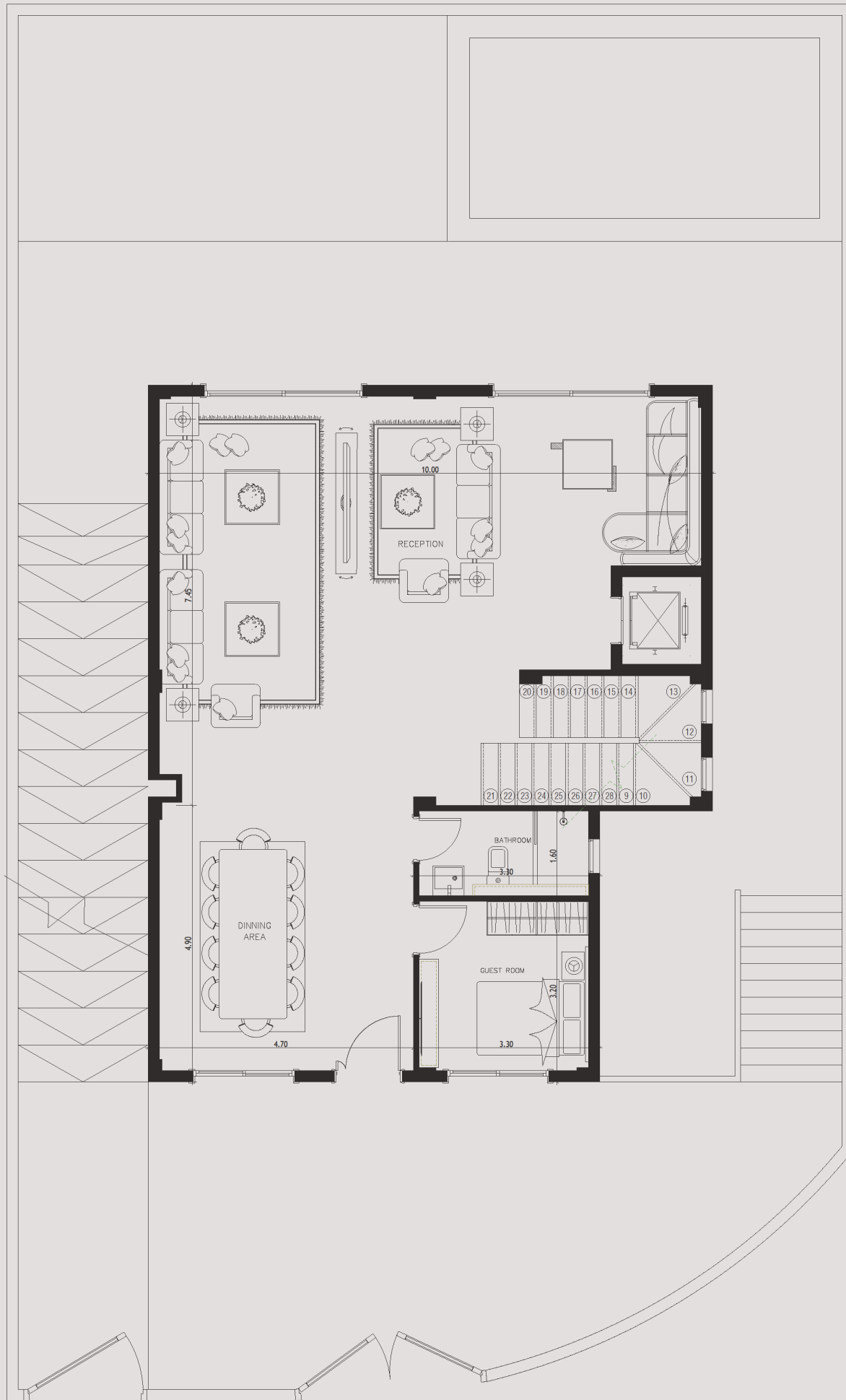
TOP VIEW

BASEMENT FLOOR PLAN



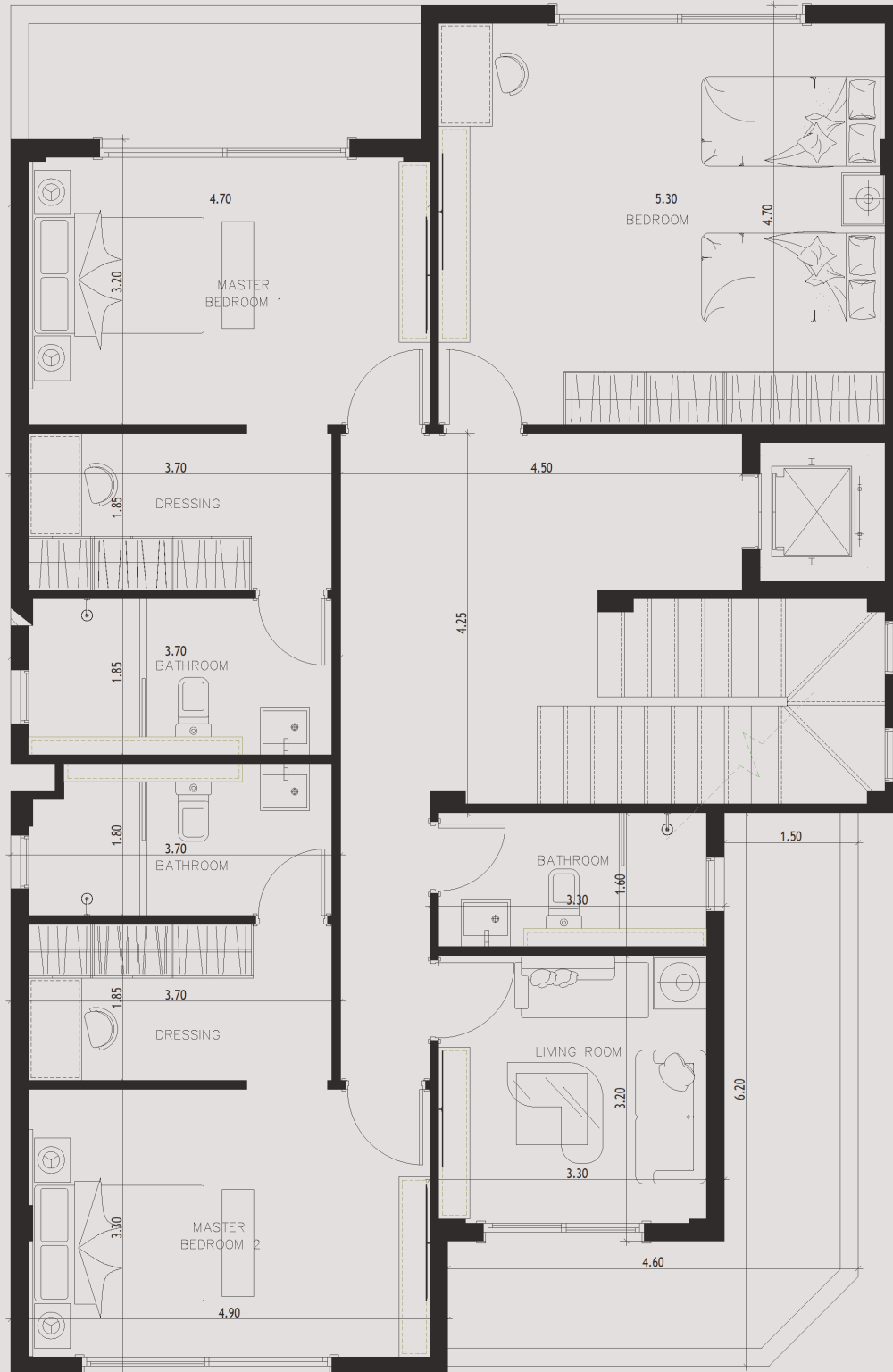
- RECEPTION 10.00 m² x 4.20 m² .
- KITCHEN 4.90 m² x 4.70 m² .
- NANNY'S ROOM 3.30 m² x 2.60 m² .
- NANNY'S BATHROOM 2.30 m² x 1.40 m² .
- STORAGE 2.30 m² x 1.90 m² .
- DINNING AREA 4.50 m² x 2.40 m² .
- GUEST TOILET 3.40 m² x 1.30 m² .

GROUND FLOOR PLAN



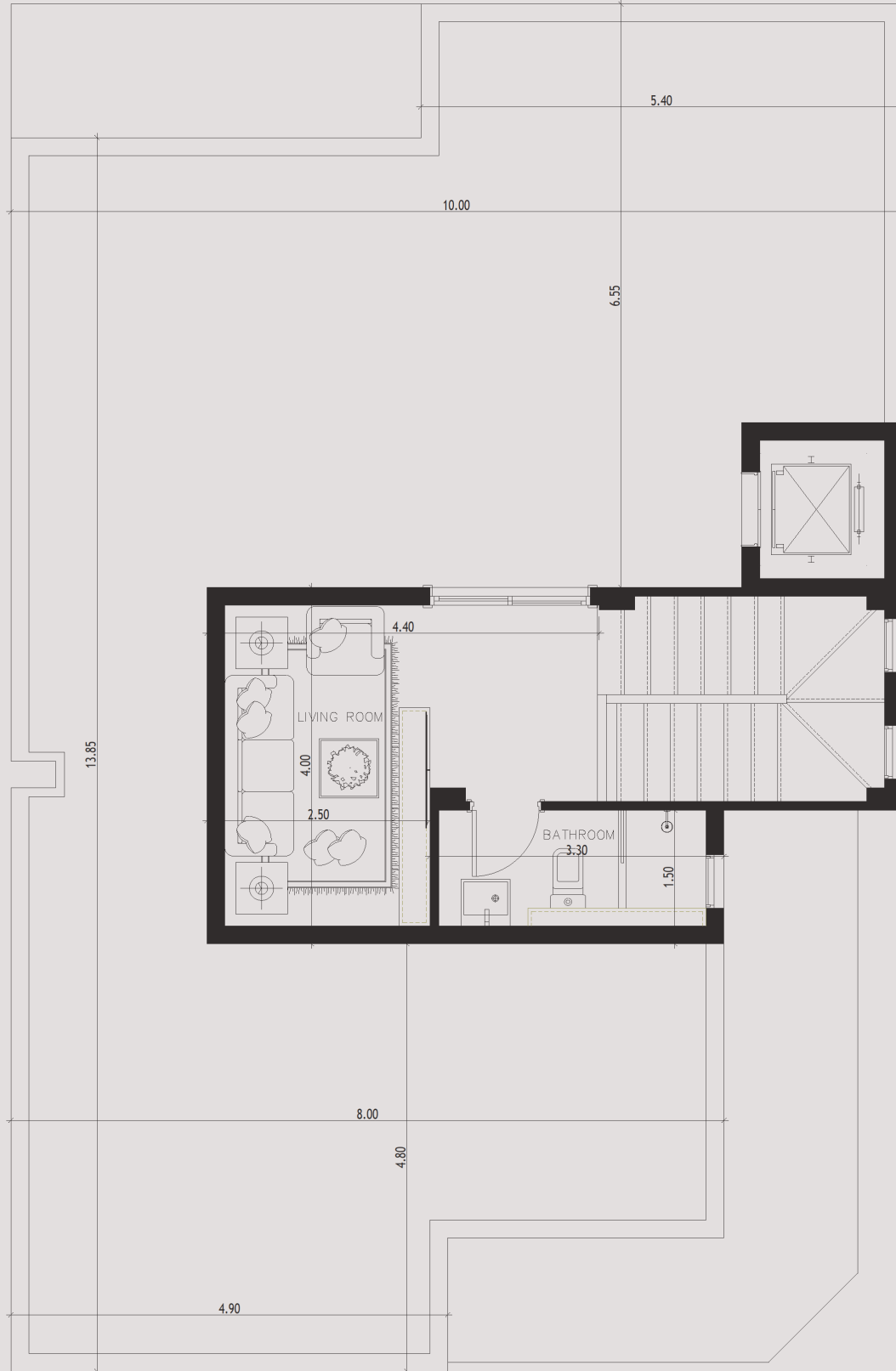
- RECEPTION 10.00 m² x 7.45 m² .
- DINNING AREA 4.90 m² x 4.70 m² .
- GUEST ROOM 3.30 m² x 3.20 m² .
- BATHROOM 3.30 m² x 1.60 m² .

FIRST FLOOR PLAN



- MASTER BEDROOM1 4.70 m² x 3.20 m² .
- DRESSING 3.70 m² x 1.85 m² .
- MASTER BATHROOM1 3.70 m² x 1.85 m² .
- MASTER BEDROOM 2 4.90 m² x 3.30 m² .
- DRESSING 3.70 m² x 1.85 m² .
- MASTER BATHROOM2 3.70 m² x 1.85 m² .
- BEDROOM 5.30 m² x 4.70 m² .
- LIVING ROOM 3.30 m² x 3.20 m² .
- BATHROOM 3.30 m² x 1.60 m² .
- LOBBY 7.30 m² x 1.10 m² .
- TERRACE 1 4.60 m² x 1.50 m² .
- TERRACE 2 6.20 m² x 4.60 m² .

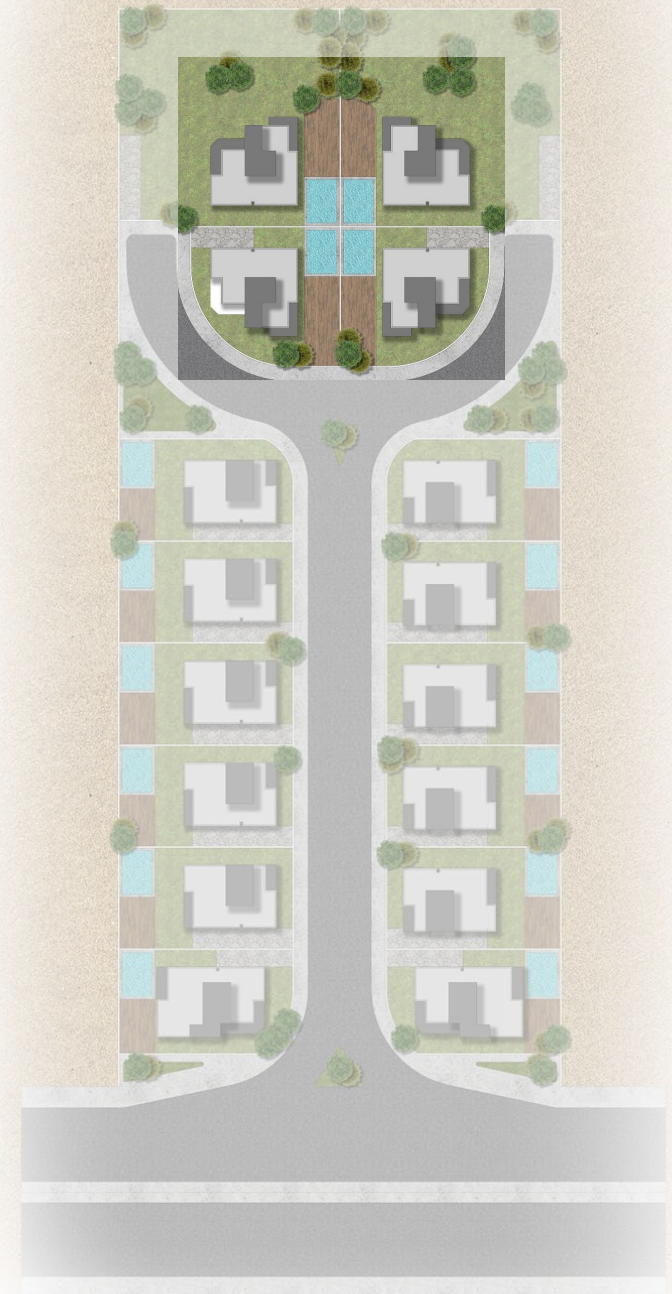
ROOF FLOOR PLAN



- LIVING ROOM 4.40 m² x 4.00 m² .
- BATHROOM 3.30 m² x 1.50 m² .

THE

ROYAL
VILLA





FRONT VIEW

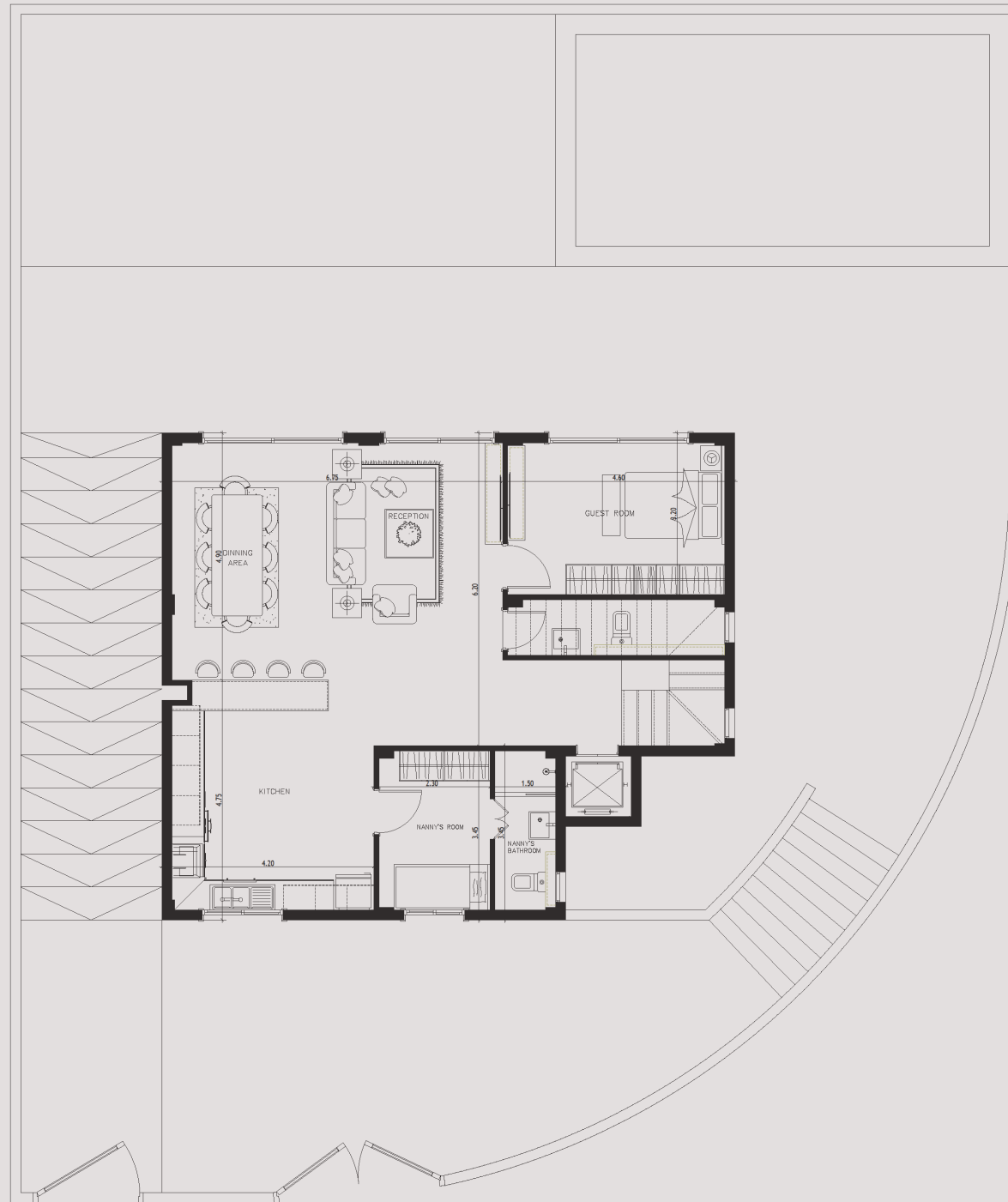
BACK VIEW





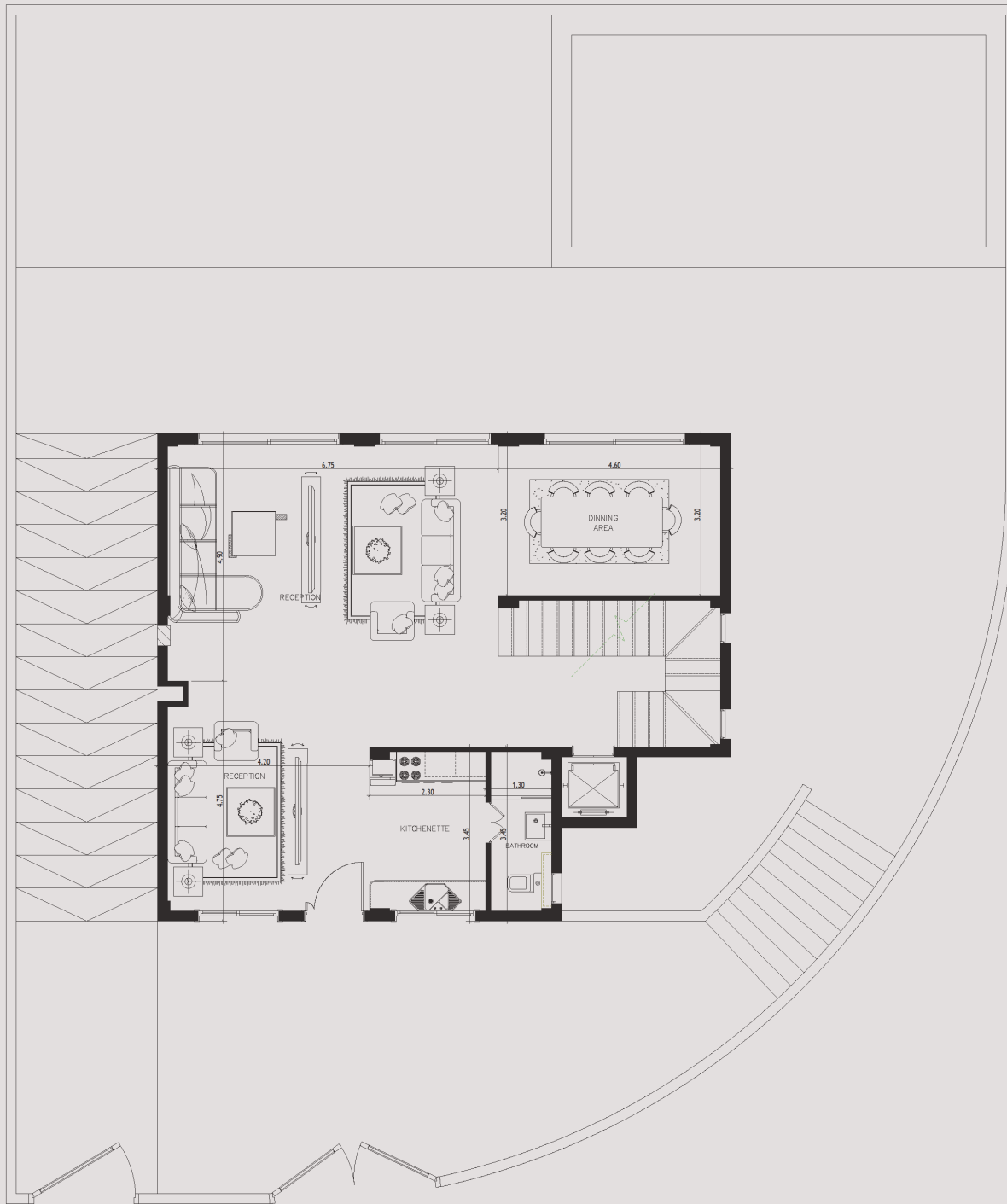
TOP VIEW

BASEMENT FLOOR PLAN



- RECEPTION 4.90 m² x 4.90 m² .
- KITCHEN 4.75 m² x 4.20 m² .
- NANNY'S ROOM 3.45 m² x 2.30 m² .
- NANNY'S BATHROOM 3.45 m² x 1.50 m² .
- GUEST ROOM 2.30 m² x 1.90 m² .
- DINNING AREA 4.90 m² x 2.40 m² .
- GUEST TOILET 4.60 m² x 1.30 m² .

GROUND FLOOR PLAN



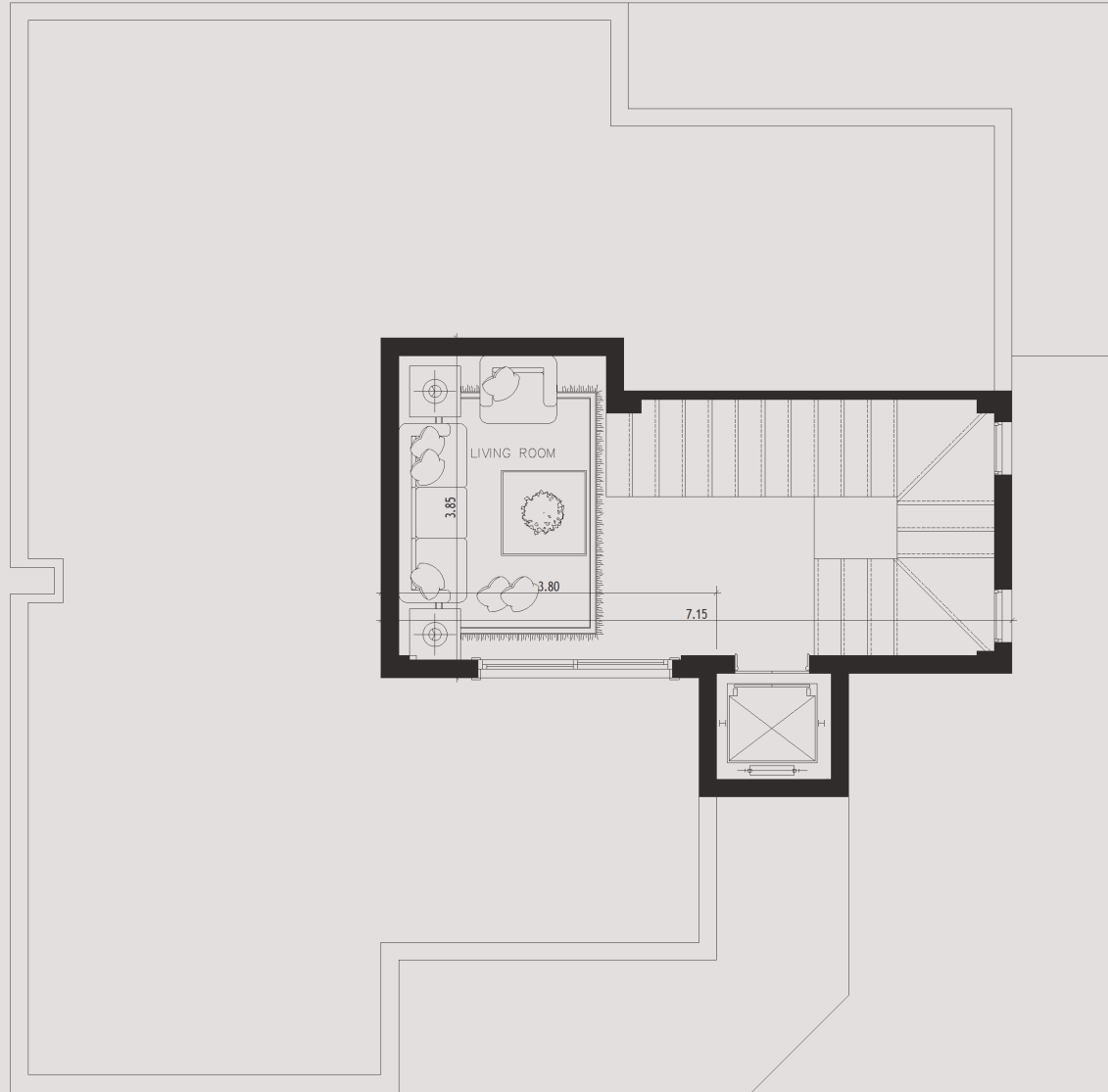
- RECEPTION 9.65 m² x 6.75 m² .
- DINNING AREA 4.60 m² x 3.20 m² .
- KITCHENETTE 3.30 m² x 3.20 m² .
- BATHROOM 3.45 m² x 1.30 m² .

FIRST FLOOR PLAN



- MASTER BEDROOM 4.20 m² x 3.20 m².
- MASTER BATHROOM 4.30 m² x 1.90 m².
- BEDROOM 1 4.40 m² x 3.55 m².
- BEDROOM 2 3.80 m² x 3.35 m².
- LIVING ROOM 4.50 m² x 3.20 m².
- BATHROOM 3.20 m² x 2.40 m².
- TERRACE 1 4.10 m² x 1.20 m².
- TERRACE 2 5.60 m² x 4.00 m².
- TERRACE 3 5.10 m² x 3.35 m².

ROOF FLOOR PLAN



- LIVING ROOM 3.85 m² x 3.80 m² .