



INSPIRED BY PALM JEBEL ALI

Palm Jebel Ali captures the transformative power of living in an extraordinary place. It's not just about the beauty of the island, but about how it inspires everyone who calls it home. Each day brings a sense of renewal—residents find themselves uplifted by the vast, azure coastlines and lush spaces that surround them. The island's design sparks creativity at every turn. Living here ignites a fire within, where minds are refreshed, hearts are renewed, and lives are elevated. It's a place where the environment itself inspires people to dream bigger, live more fully, and embrace a life of possibility.



NAKHEEL'S DESIGN VISION

“ WE ARE BUILDING A NEW REALITY
FOR OUR PEOPLE, A NEW FUTURE
FOR OUR CHILDREN, AND A NEW
MODEL OF DEVELOPMENT.”

H.H Sheikh Mohammed bin Rashid Al Maktoum
UAE VICE-PRESIDENT, PRIME MINISTER, AND RULER OF DUBAI

Cities are made to inspire.

Nakheel, a world-leading master developer, brings this vision to life through award-winning projects, each driven by an unwavering pursuit of perfection. Nakheel's creations are not momentary—they are crafted to inspire and endure for generations. This relentless pursuit of excellence and fulfillment culminates in the realisation of Palm Jebel Ali: a pinnacle of engineering, design brilliance, and the ultimate expression of Dubai living.

Palm Jebel Ali is more than a development; it symbolises a journey of innovation and inspiration, a reflection not only of a company's vision but of a nation's ambition. It is a place where we are drawn to experience the wonder of vibrant colours, the music of emotions, the beauty of shapes, and the harmony

of nature. This is an unprecedented world where every home kindle a renewed sense of possibility.

With leading designers drawing inspiration from vernacular architecture, the sunlit coastal landscape, and ultra-luxurious materials, the magnificent Beach Villas Collection embodies a creative fusion of style, ensuring that each villa lining the fronds of Palm Jebel Ali is unique in character and spirit. These homes do more than offer luxury—they inspire their residents, igniting creativity and enriching lives through exceptional living experiences.

This is not just a home.
This is where inspiration lives.
This is Palm Jebel Ali.

Index

1. A CURATED COLLECTION

THE
BEACH VILLAS

Serenity By The Sea

In a beach villa, a happy tomorrow arrives every day, every single dawn.

Beachfront living at its finest	—	P. 8
An iconic neighbourhood	—	P. 17
Introducing the Beach Collection	—	P. 22

2. LIVE IN THE MASTERPIECE

OWN A PIECE
OF HISTORY

The Beach Collection	—	P. 30
Villa Crystal Springs	—	P. 36

A CURATED COLLECTION

THE
BEACH
VILLAS

1



Serenity By The Sea

Beachfront living at its finest	—	P.8
An iconic neighbourhood	—	P.17
Introducing the Beach Collection	—	P.22

S

— BEACHFRONT LIVING AT ITS FINEST

SUN, SEA, SAND, & SOPHISTICATION

WAVES OF LUXURY, MOMENTS OF BLISS.

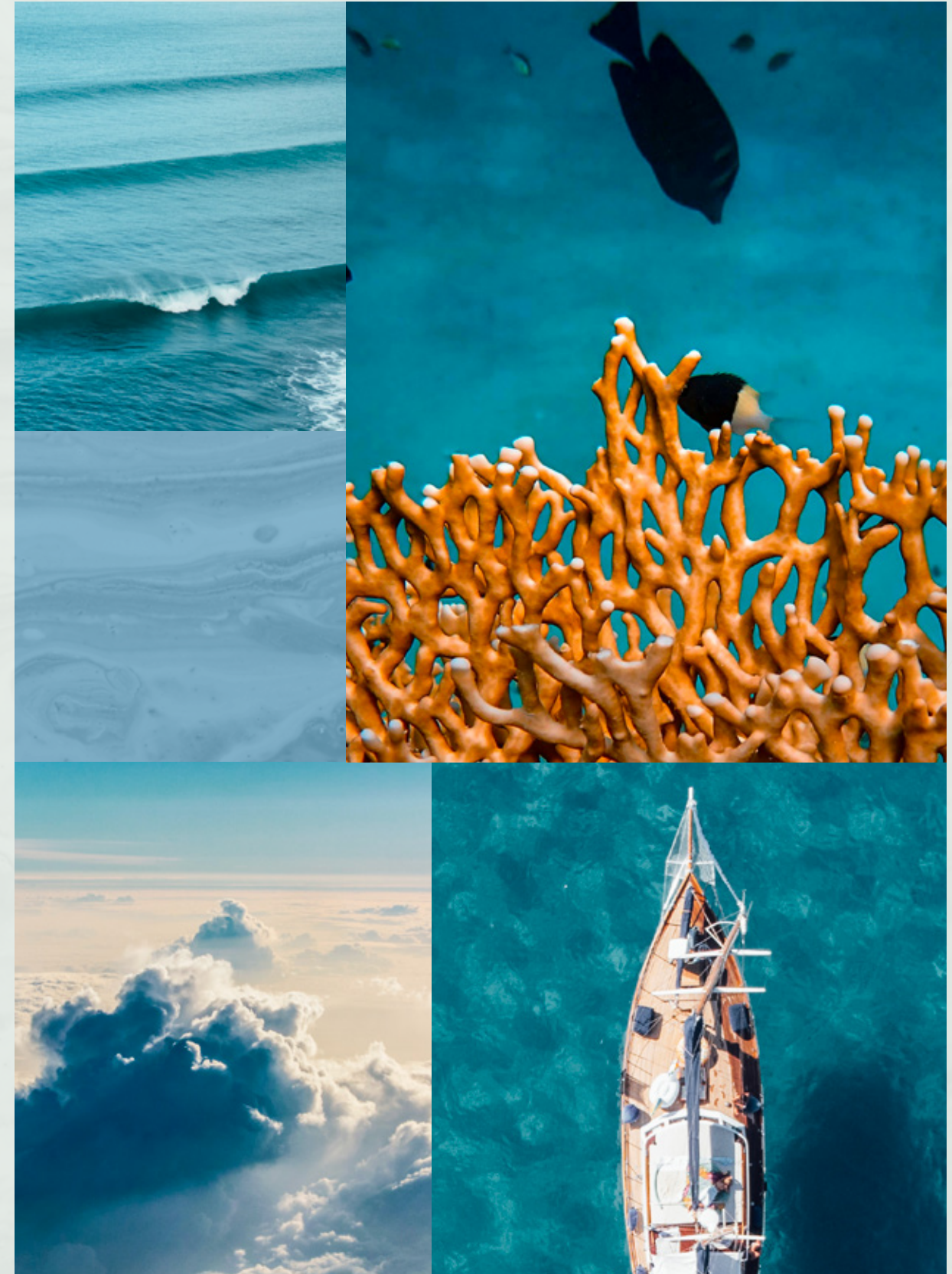
Welcome to Palm Jebel Ali, a world-class lifestyle destination where every detail is meticulously designed to inspire. Impeccably curated, this haven offers unrivalled luxury living, enriching the lives of its residents through every experience.



Live a life of inspiration, serenity, and comfort in Dubai's most coveted district—a vibrant blend of lush greenery, azure waters, and pristine white sands.

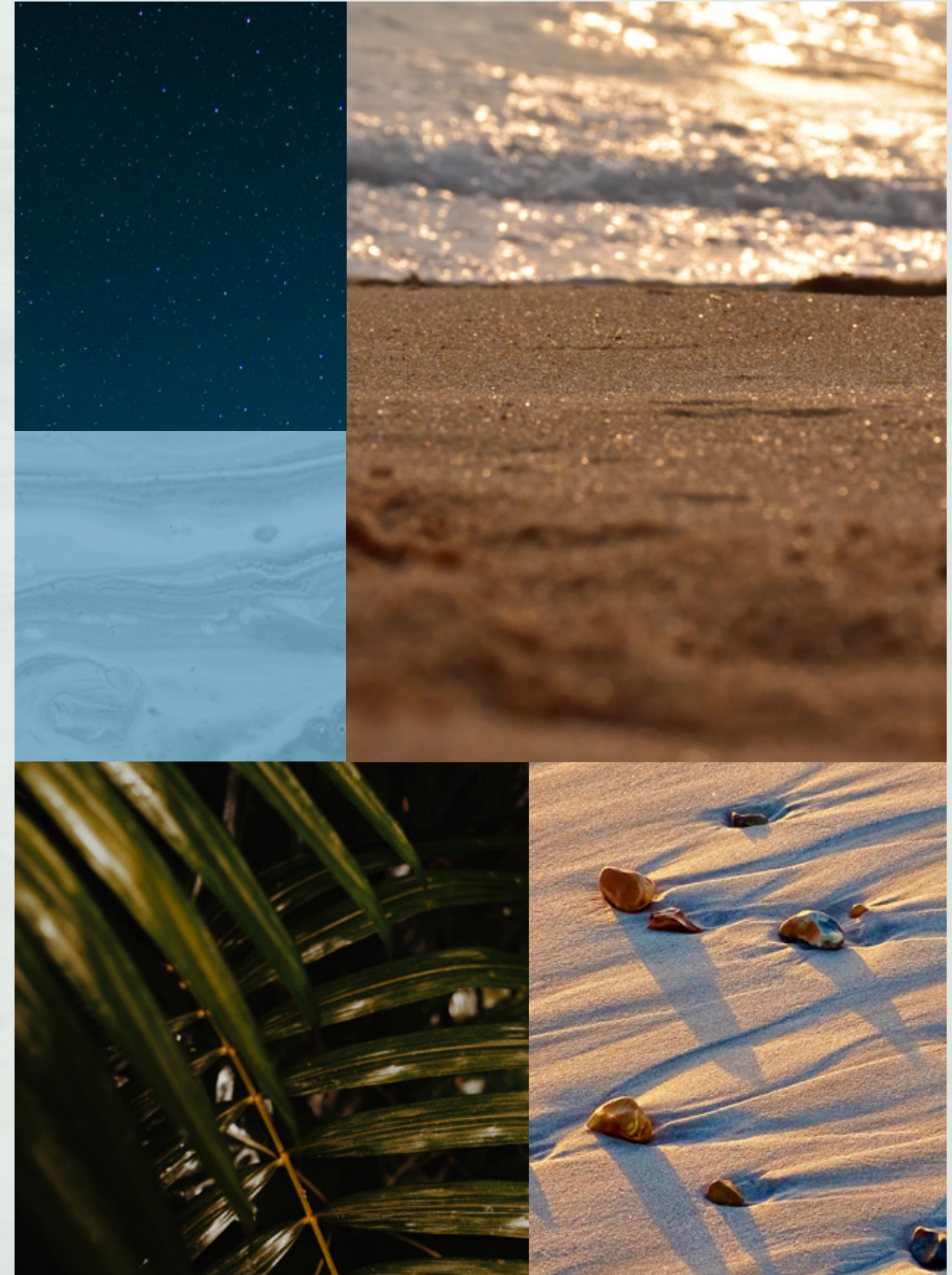
LIVE INSPIRED, IN HARMONY WITH NATURE,
BETWEEN THE CITY AND THE SKY.

Palm Jebel Ali rises from the sea, not just as a luxury archipelago, but as a sanctuary of inspiration. Offering unparalleled views of Dubai's skyline, this masterpiece of living boasts the longest coastline in the city. Just minutes from Dubai's center and seamlessly connected via Sheikh Zayed Road (E11), Palm Jebel Ali is set to become the crown jewel of the city's rapidly growing southern urban centre. Here, spectacular properties and five-star amenities come together to create a residential experience that redefines luxury and elevates everyday living to extraordinary heights.





THE
FRONDS
BEACH COLLECTION





— FLOURISHING GREEN FRONDS

AN ICONIC NEIGHBOURHOOD

ARTFULLY DESIGNED, PRIVATE
NEIGHBOURHOODS FOR SOPHISTICATED
CITY LIVING.

Each exclusive frond at Palm Jebel Ali forms its own thoughtfully crafted private neighbourhood, designed to inspire. Elegant streets are painted in shades of lush greenery, where vibrant flora blends seamlessly with curated foliage to create a harmonious, beachfront residential landscape.

Here, an active lifestyle thrives—wide, walkable streets invite pedestrians and bikers to explore pocketed parks and access the beach. The frond streetscapes provide shaded paths lined with tree corridors and layered plantings, creating an idyllic oasis and connection with nature.





Savour the tropical atmosphere that envelops you as you step from your serene garden onto the sandy beach just beyond your doorstep. Let the soothing sound of the waves and the vast openness of the sea spark moments of pure relaxation and ignite a sense of renewal.

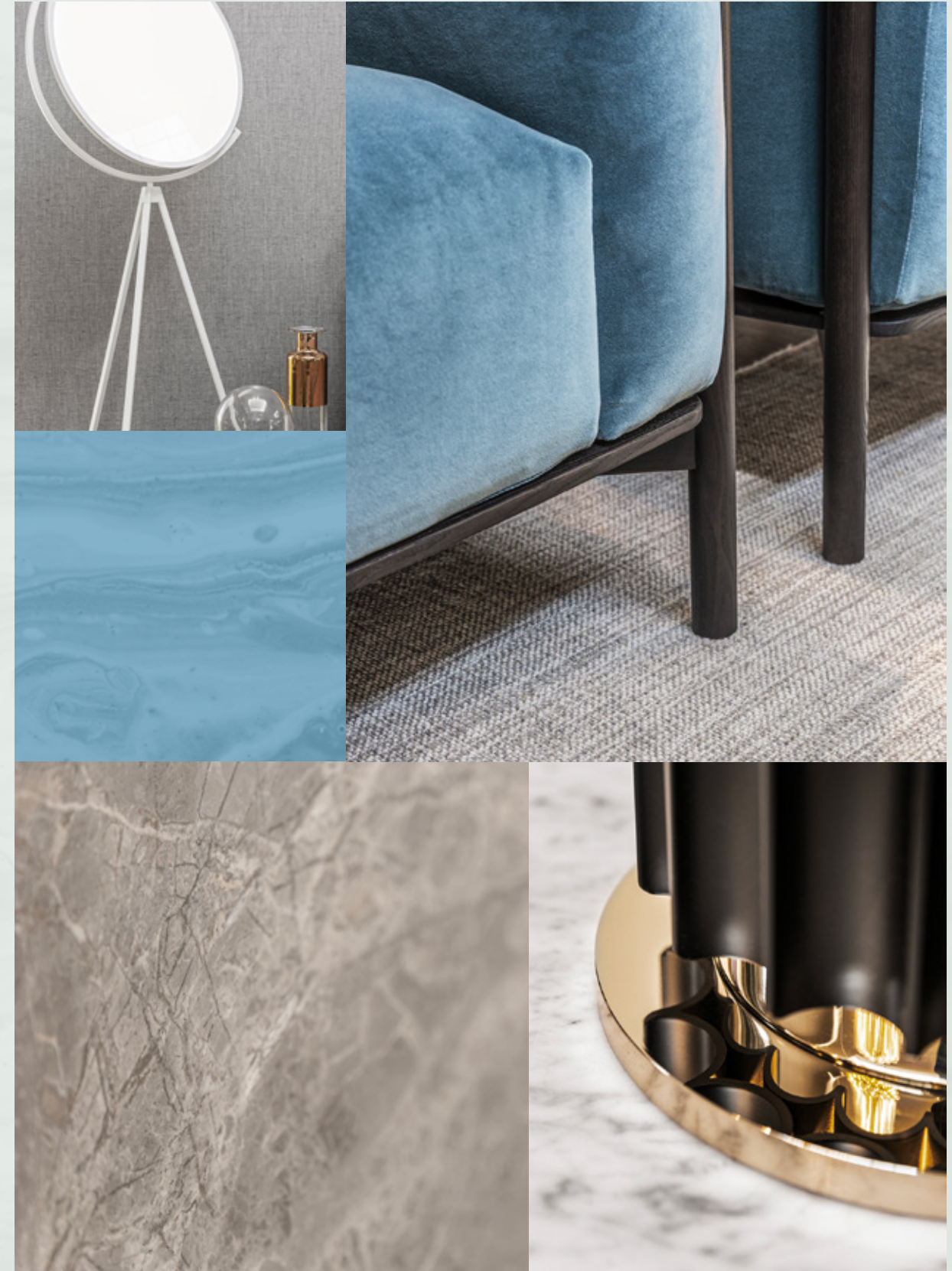


INTRODUCING THE BEACH COLLECTION

CRAFTED WITH CARE

SOPHISTICATED STYLE AND PERFECT POISE.
DISCOVER THE BLISSFUL BEACH COLLECTION.

A collection, thoughtfully designed and nestled in an idyllic setting. Immerse yourself in the serenity of beachfront living, where the calming sounds of the water from your enchanting terrace create moments of pure bliss.



Exceptional design, a breathtaking beachfront location, and the exclusivity of a private neighbourhood, all crafted to impress.

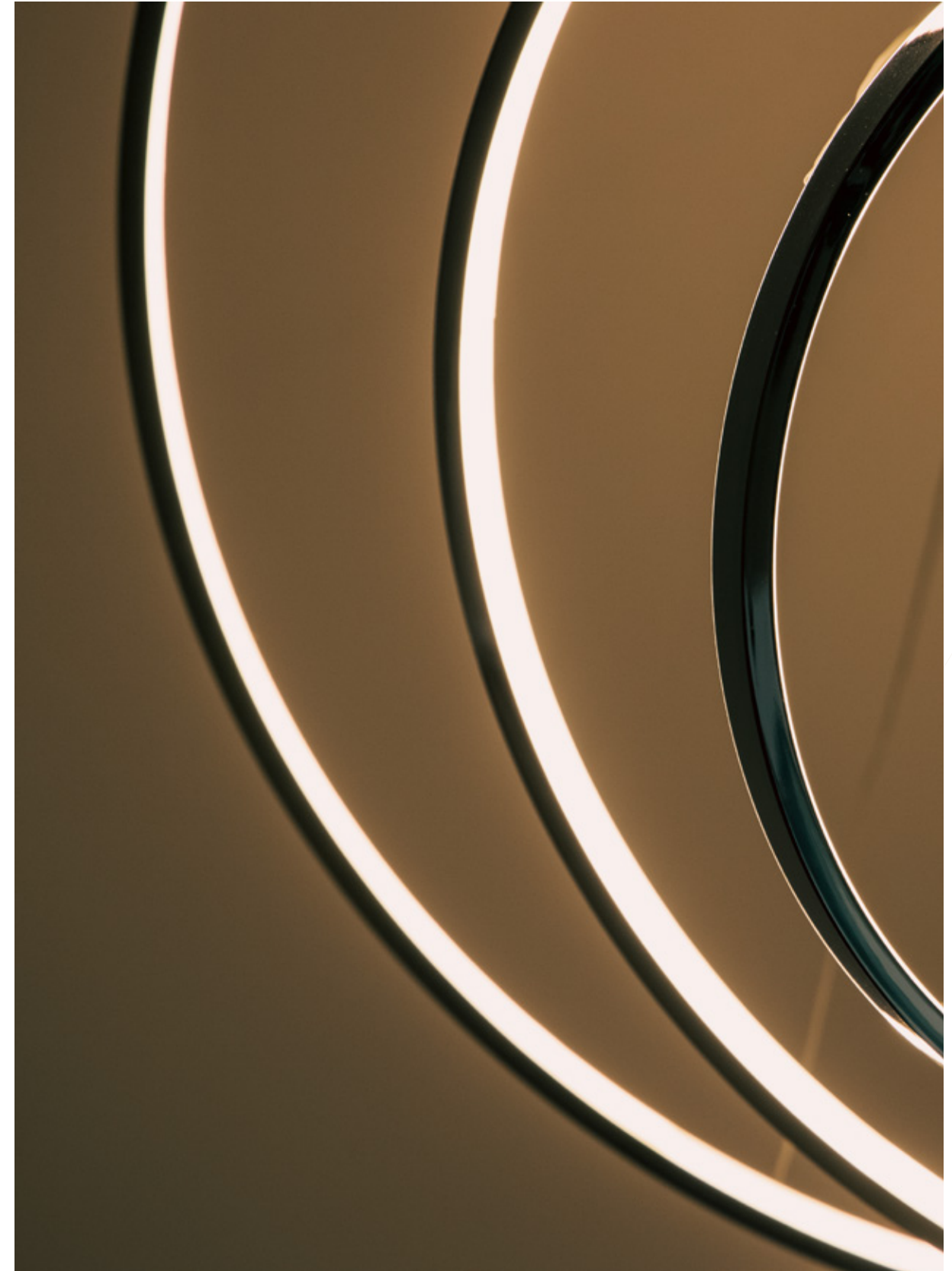
HOMES DESIGNED WITH STYLISH FLAIR.

The Beach Collection is for those who seek a home that embraces contemporary design. Each villa is thoughtfully crafted to accommodate a variety of lifestyles, with spacious layouts that ensure seamless indoor-outdoor living and maximise views of the sea. The architecture blends modern aesthetics with timeless appeal, creating a harmony between nature and home.

Unique finishes complement each villa, enhancing its design and elevating the overall living experience.



EXCEPTIONAL DESIGN / LUXURIOUS BEACHSIDE ENVIRONMENT / BEACHFRONT LOCATION



LIVE IN A MASTERPIECE

OWN A PIECE OF

HISTORY

2



Ten Unique Beach Villas

The Beach Collection	—	P.30
Villa Crystal Springs	—	P.36

THE BEACH COLLECTION

WELCOMING WATERFRONT RESIDENCES

THE CONTEMPORARY COMPOSITION OF EACH STATEMENT VILLA HAS BEEN METICULOUSLY DESIGNED.

Imagine living an exclusive waterfront experience. Every morning and evening, the rhythmic sound of the sea, its graceful movements, and shimmering surface create a harmonious landscape that fuels creativity.

With up to six spacious bedrooms, private ensuite bathrooms, lush greenery, and vibrant plants, each villa is a masterpiece where every detail has been carefully designed. The seamless connection between indoors and outdoors invites you to live in perfect harmony with your surroundings.

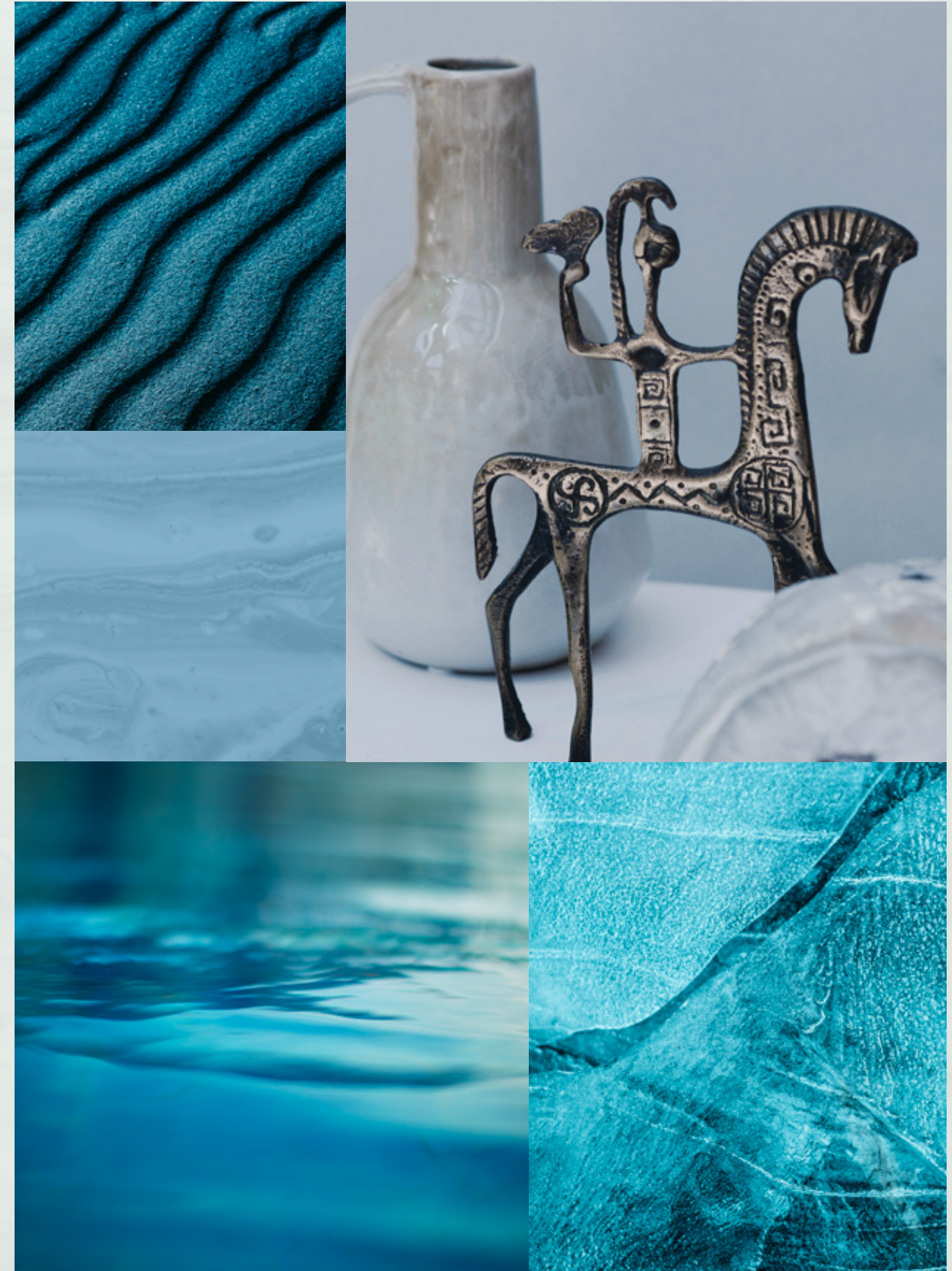
In the Beach Villas, everyday life becomes an inspired expression of beauty and balance.



Located on the exclusive fronds, each residence offers direct access to the beach, nestled within a private neighbourhood that inspires serenity.

TRUE LUXURY LIVING REFLECTS YOUR OWN DESIRES.

Choose an elegant, high-quality home and enjoy an unrivalled lifestyle. Each villa is unique, bespoke, and crafted to fulfil your individual needs, creating a perfect balance that reflects your personal vision. Here, we don't build just homes, but happiness and prosperity for every resident, ensuring a life of inspiration.





BEACH CONNECTIVITY / SERENE / PRIVATE

VILLA

CRYSTAL
SPRINGS

Five-Bedroom Property

“We took on a luxurious, minimalist approach when designing this project.”

WHITESPACE - ARCHITECT

VILLA CRYSTAL SPRINGS

STEP UP
TO NEW HEIGHTS
OF EXCLUSIVITY

THE SIMPLICITY OF A BOLD, MINIMALIST
DESIGN CREATES A CAPTIVATING HOME.

A stunning architectural design leaves a memorable impression with precise, square shapes stepping up to the sky on the street side façade. The villa's design embraces pure geometric forms and contrasting profiles, resulting in generous interior spaces and a seamless connection to the outdoors.

Angles reaching toward inset windows highlight the unique perspective of this stunning villa that maximises views and spaces illuminated by natural daylight.





THE BEACHSIDE FAÇADE IS A REMARKABLE CONTRAST AND TESTAMENT TO AN INTELLIGENT DESIGN WHERE THE BEACHFRONT IS THE VILLA'S FOCAL POINT.

Sublime comfort awaits in the luxurious curves and plush materials adorning the lounge opening up to expansive water views with their dramatic play of colour and light.



This refined residence invites nature indoors with natural materials and seamless indoor-outdoor space.

FEEL IMMERSED IN NATURE

Nature infuses every experience with careful planning ensuring extended balconies and outdoor terraces perfectly frame views of the beach awaiting your footprints. A shaded terrace on the roof wraps around the villa, providing an expansive and immersive experience of the waterfront surroundings.



Enjoy the perfect panorama of azure water views from the rooftop lounge. Refined interiors in sophisticated colours create sumptuous comfort which flows out onto the terrace for a more interactive experience.





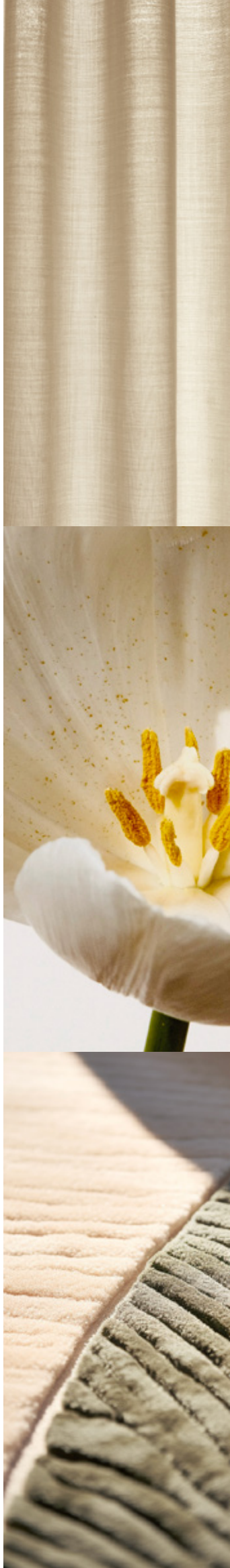
UPON ENTERING THE VILLA, THE FOYER LEADS TO A SHOWCASE STAIRCASE THAT CREATES AN IMPRESSIVELY ELEGANT TRANSITION TO THE FIRST FLOOR.

Be inspired by the elevated views from the rooftop room where you choose to craft a creative space or a haven for wellbeing. Add your personal touch to enhance the sophisticated style.



Awake to private views clear skies reflected in the waters below from this stunning master bedroom.

Sleek lines and natural material create your personal sanctuary.





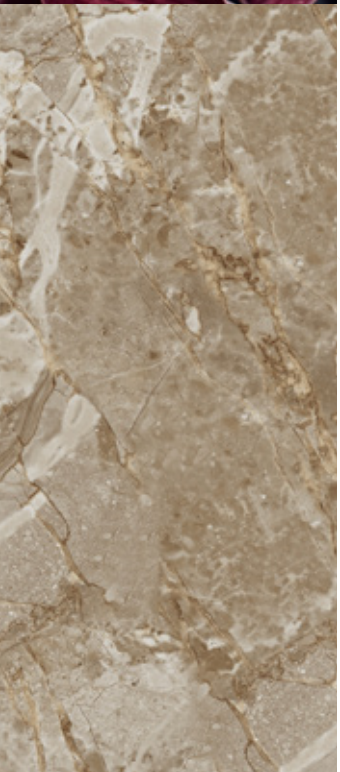
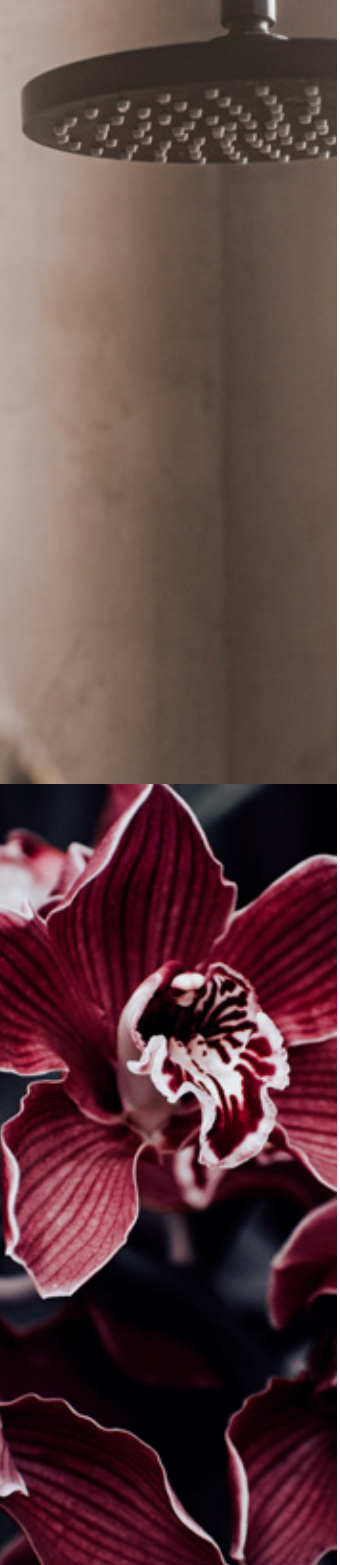
Live beyond expectations in this minimalist designed villa where intricate details create the difference.

A HOME THAT PROMOTES WELLNESS

Crafted in perfect harmony with nature, a sense of wellbeing infuses all aspects of this designer home. From framed open views, to outdoor courtyards and private spaces, an inviting and positive atmosphere greets all who enter.

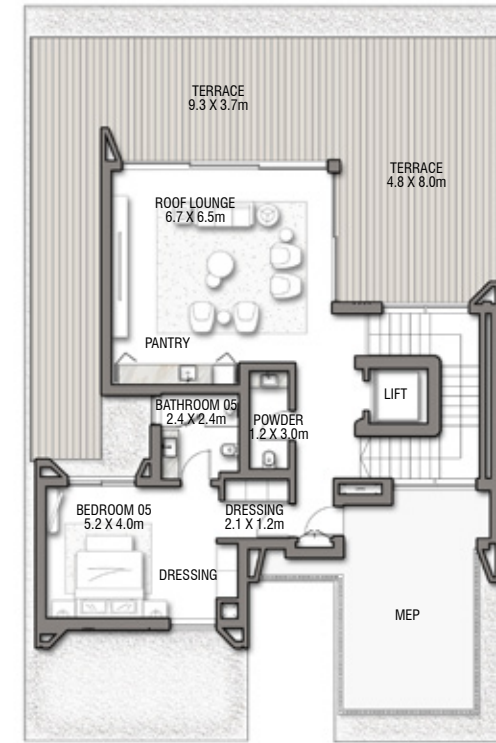
A master bathroom that will take your breath away with its stunning view and full privacy.

Impeccable finishings, quality materials and attention to detail creates your personal sanctuary.

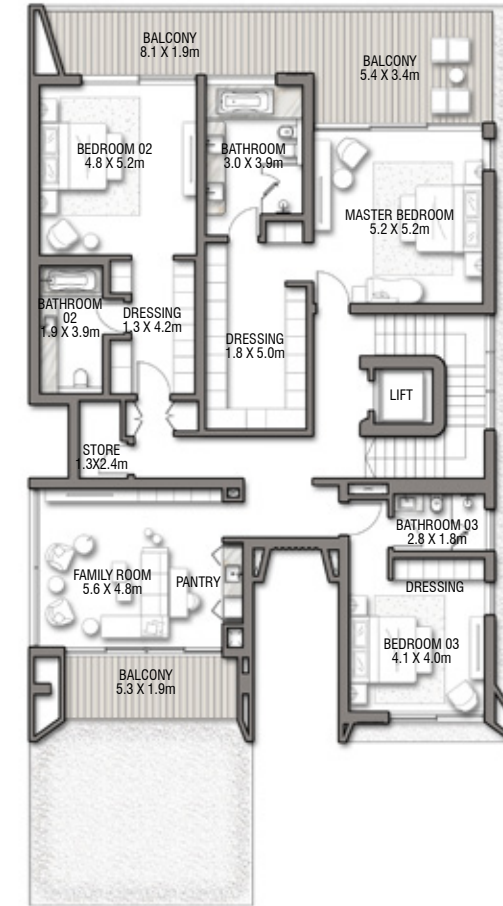




GROUND FLOOR



SECOND FLOOR



FIRST FLOOR

BEACH VILLAS COLLECTION

VILLA

CRYSTAL SPRINGS

G + 2

5 BEDROOMS + FAMILY ROOM
+ ROOF LOUNGE AND TERRACE

FLOOR TYPE	SQ. M.	SQ. FT.
Ground Floor	231.23	2,488.94
Balcony / Terrace / Porch-GF	00.00	00.00
First Floor Area	236.10	2,541.36
Balcony / Terrace - First Floor	46.39	499.34
Second Floor Area	128.24	1,380.36
Balcony / Terrace - Second Floor	99.34	1,069.29
Garage - Covered	45.13	485.78
TOTAL BUILT-UP AREA	786.43	8,465.06
Garage with Pergola	0.0	0.0
TOTAL AREA	786.43	8,465.06

Numbers, square footage and floor plans are approximate. Final dimensions, square footage and floor plans may vary and are subject to change without notice. The developer reserves the right to make revisions. Built-Up Area is measured in accordance with Dubai Land Department standards. Plans, artistic renderings, landscaping and images are for illustrative purposes only and are subject to change without notice. Landscape shown is indicative and not provided by the developer. Pool layout and configuration shown on floor plans are for general illustrative purposes only and are not provided by the developer.

The publication is for illustrative purposes only. Some of the Images shown in the document were developed with computer graphics technology (photorealistic rendering) with reference to details for the façade and elevations, common areas, private areas and interiors of the villa, for the sole purpose of presenting a plan for future realization and/or the various, potential solutions following user customization. All furniture, decorative lighting and art are represented for marketing and rendering purposes only. For this reason, all information, descriptions, and images are purely indicative and subject to change. This document has no contractual value and is not binding on the investment company that owns the rights and information reported. The reproduction and the partial use of texts and images is forbidden without prior authorization.

