



BEAUT BUDAIYA  
بيوت البديع



# TABLE OF CONTENT

## Contents

## Page No

Location	03
Overview	04
About the Developer	05
Our Goal	06
Villas and Living Spaces	07
Specialties	08
Finishes	09
Features	10
Area Statement	11-15

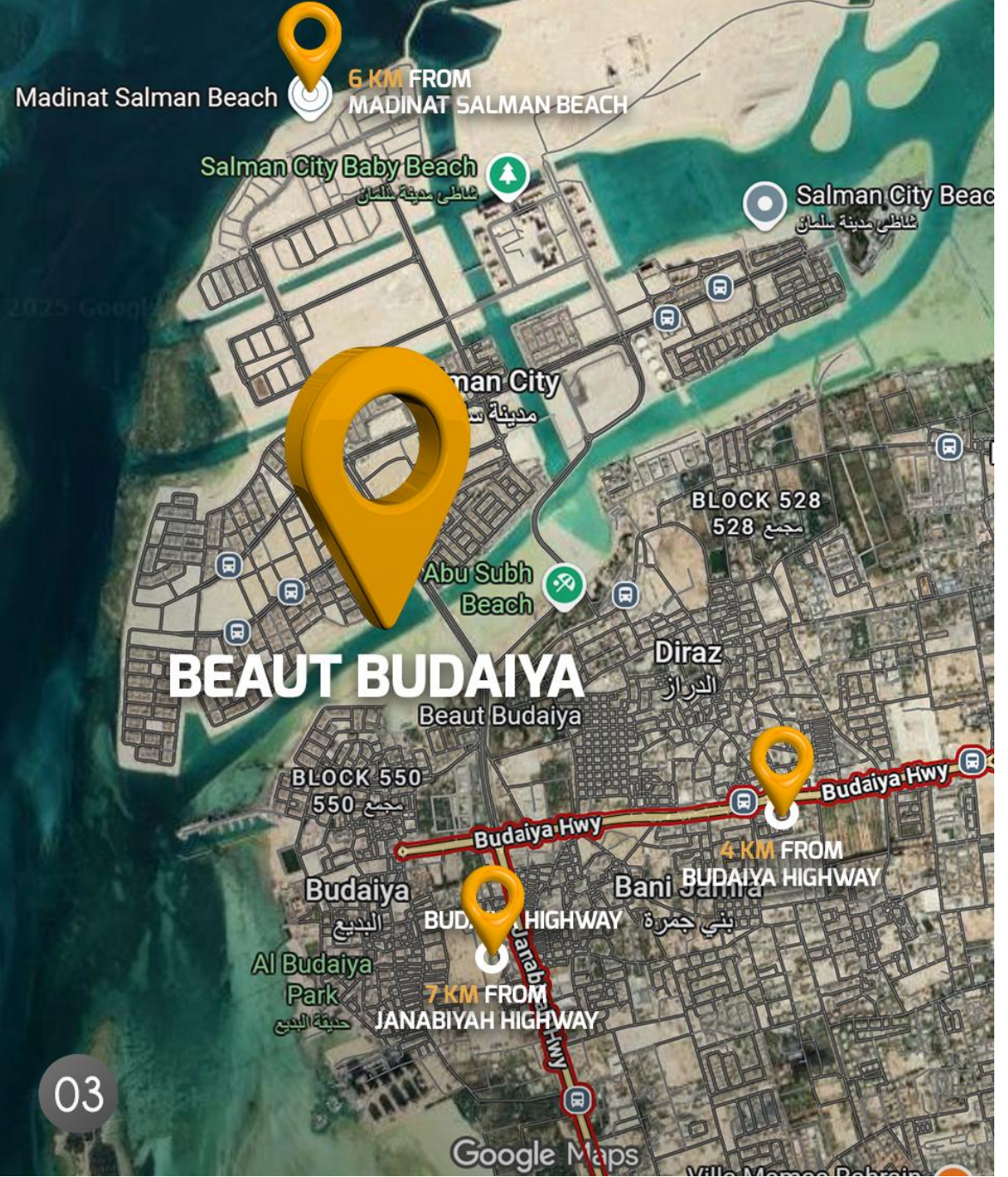
## MINUTES AWAY FROM EVERYTHING

على بُعد دقائق من كل شيء

**6 KM FROM MADINAT SALMAN BEACH**  
٦ كم من شاطئ مدينة سلمان

**7 KM FROM JANABIYAH HIGHWAY**  
٧ كم من شارع جنابية السريع

**4 KM FROM BUDAIYA HIGHWAY**  
٤ كم من شارع البديع السريع





## OVERVIEW

Beaut Budaiya is a one-of-a-kind residential project in Budaiya, Bahrain. It's designed as a sustainable township where families can enjoy modern homes and a lively, safe neighborhood. With a variety of villas, the community provides options for all kinds of households, making it an ideal place to live.

## ABOUT THE DEVELOPER

Al Raha Real Estate, a sister concern of Ahad Holdings, is behind this project. The company specializes in real estate investments and developments. Each project is carefully planned, keeping in mind the beauty of the land, the environment and modern living standards, along with security. Al Raha Real Estate is known for delivering high-quality homes across the region.

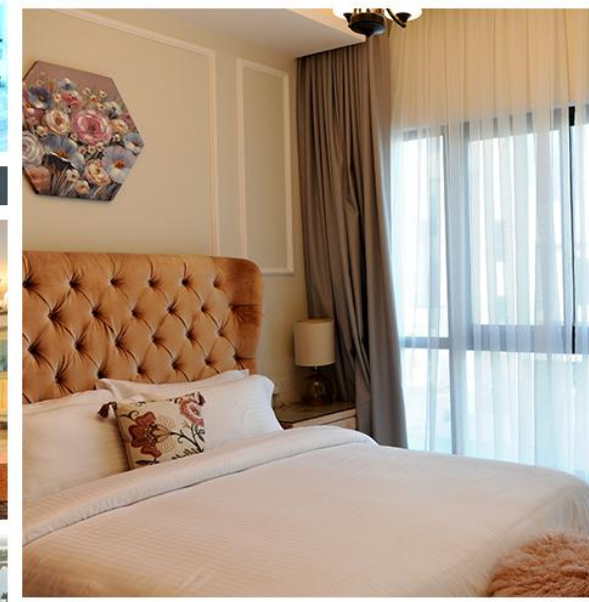
## OUR GOAL

We aim to offer more than just homes — we aim to create communities. Our focus is on quality, trust, and innovation, building residential areas that families can proudly call home. These developments reflect our impact on the city's appearance and growth, setting new benchmarks for residential luxury.



## VILLAS AND LIVING SPACES

- **Types of Villas:** 3 and 4-bedroom villas, designed for modern family living
- **Total Units:** 121 homes forming a close-knit neighborhood
- **Design:** Affordable luxury with attractive layouts and comfortable spaces
- **Road Layout:** Main township road runs through the community for smooth access



## CONVENIENCE AT YOUR DOORSTEP

Beaut Budaiya is easy to reach and close to everything you need:

**Three main entry points:**  
Madinat Salman, Budaiya Highway,  
Janabiya Highway

**Nearby amenities:**  
Supermarkets, petrol stations, Budaiya  
Farmers Market

**Shopping & leisure:**  
Delmon Gate Mall, Ruyan, Alosra  
Supermarket

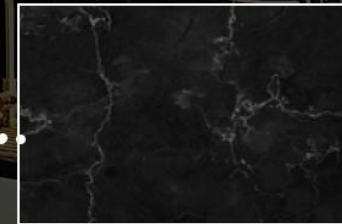
**Parks & schools:**  
Safe and friendly spaces for kids and  
families

Living here means having all the necessities within reach, while enjoying a calm, well-planned community.

# FINISHES



Semi Solid Wooden Veneer  
Doors & Cabinets



Granite Kitchen Counter Top



Imported Porcelain Tiles

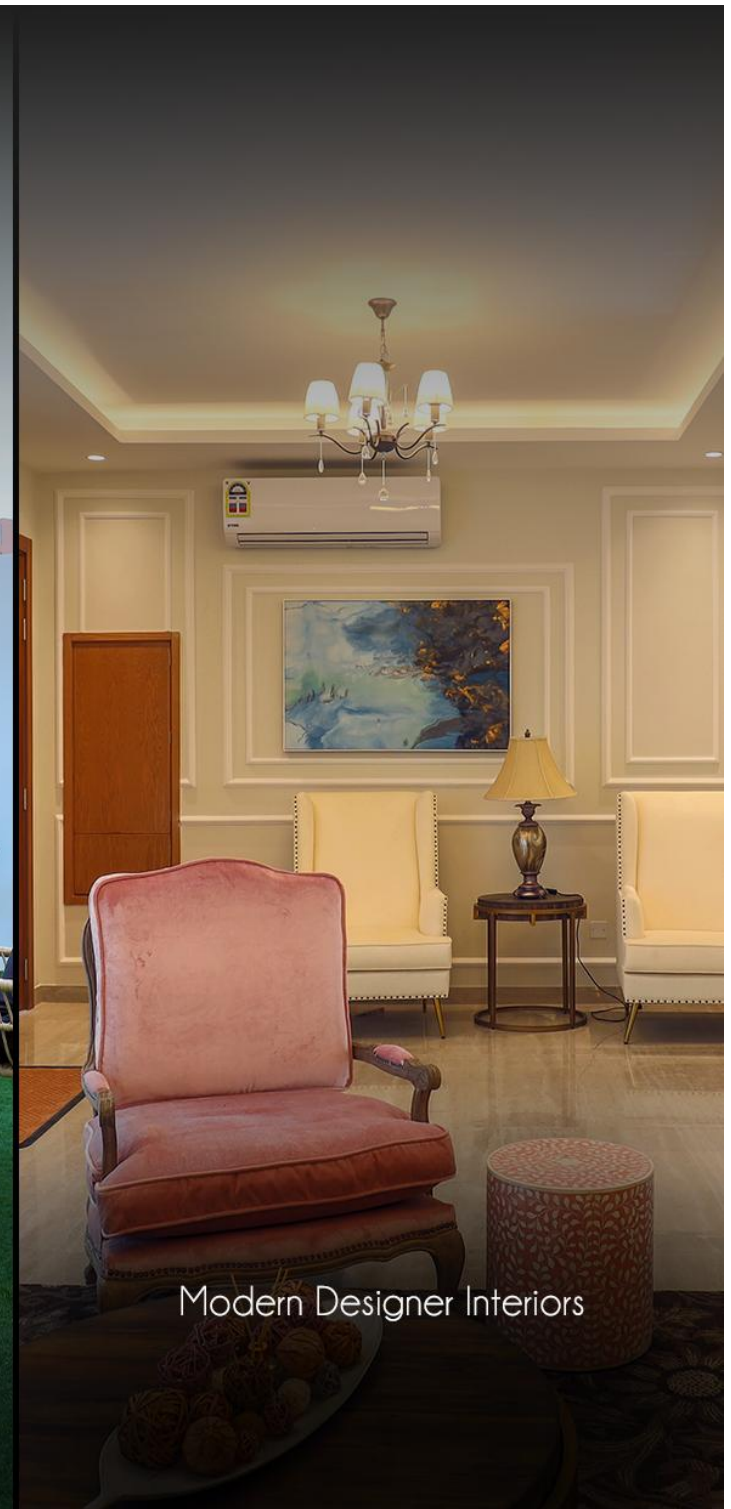
## FEATURES



European Sanitary Including  
Rain Showers



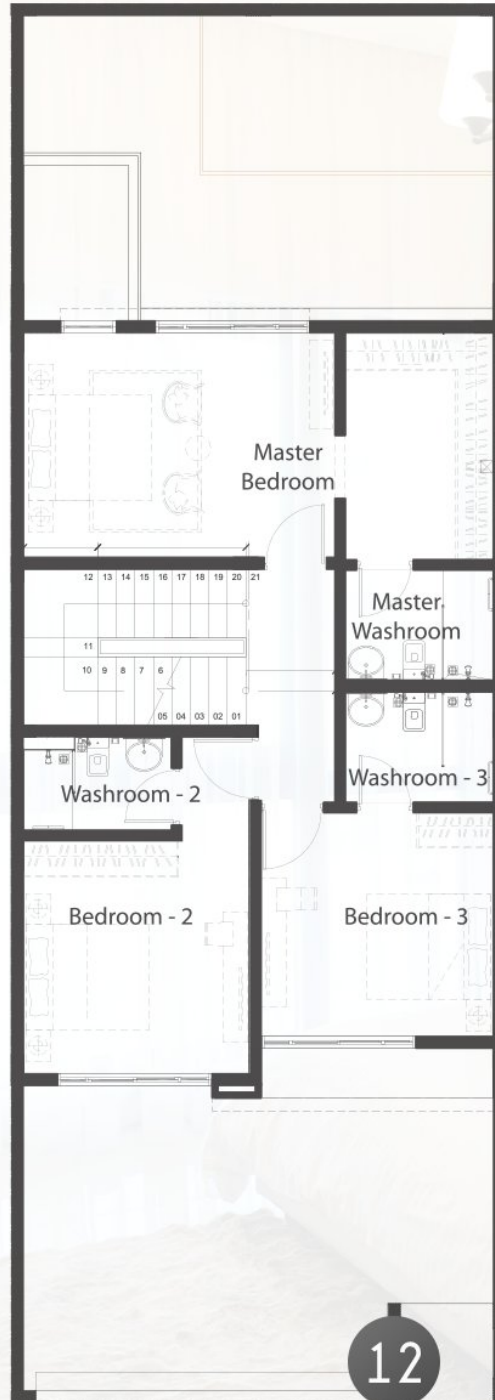
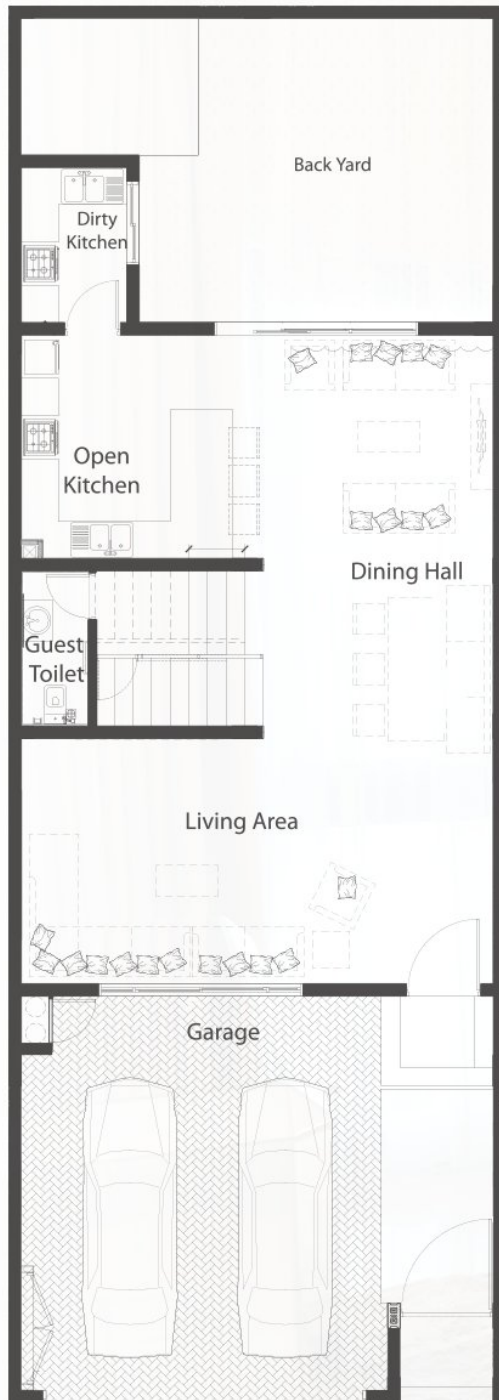
Outdoor Courtyard



Modern Designer Interiors

## AREA STATEMENT

Type	Land Area	Total Built-up
1A	180 m <sup>2</sup>	213 m <sup>2</sup>
1E	180 m <sup>2</sup>	213 m <sup>2</sup>
1D	225 m <sup>2</sup>	215 m <sup>2</sup>
2B	284 m <sup>2</sup>	258 m <sup>2</sup>



## FLOOR PLAN

### TYPE 1A

Total Built Area - 213 m<sup>2</sup>

Land Area - 180 m<sup>2</sup>

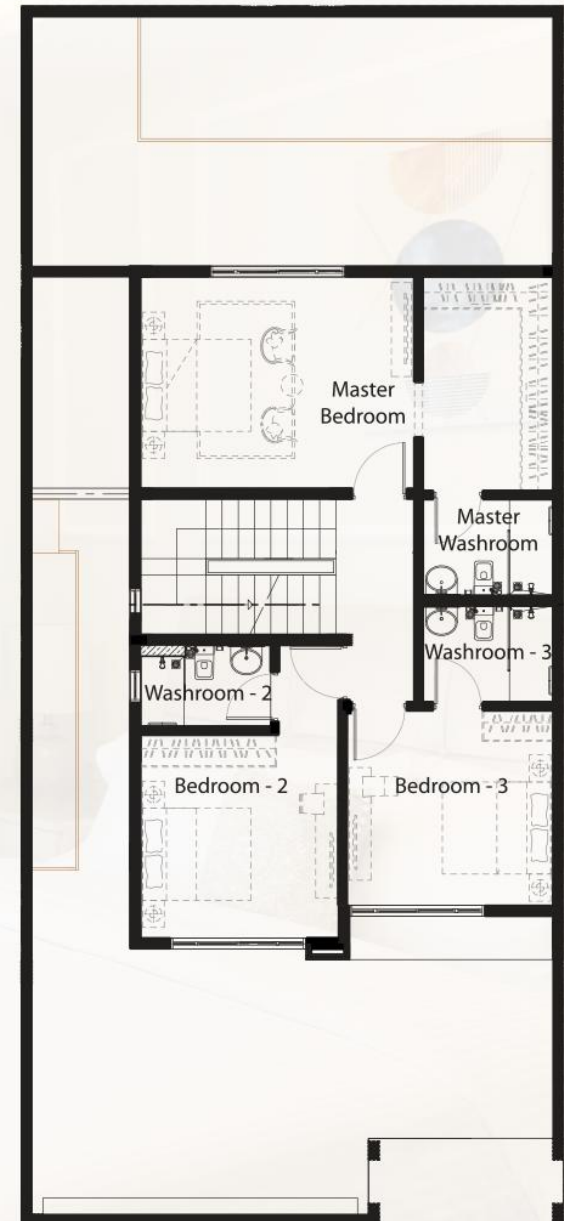
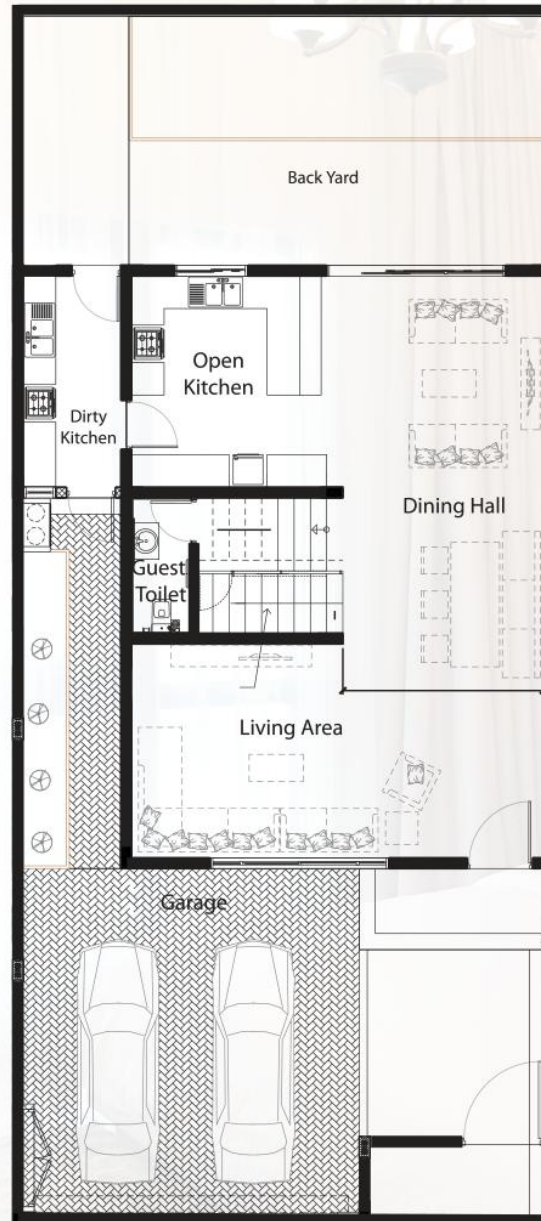
- 3 Bedrooms
- Living Area
- Dining Hall
- Open Kitchen
- Dirty Kitchen
- Guest Toilet
- Storage
- Back Yard
- Maids Room
- Laundry Area
- Garage For 2 Cars

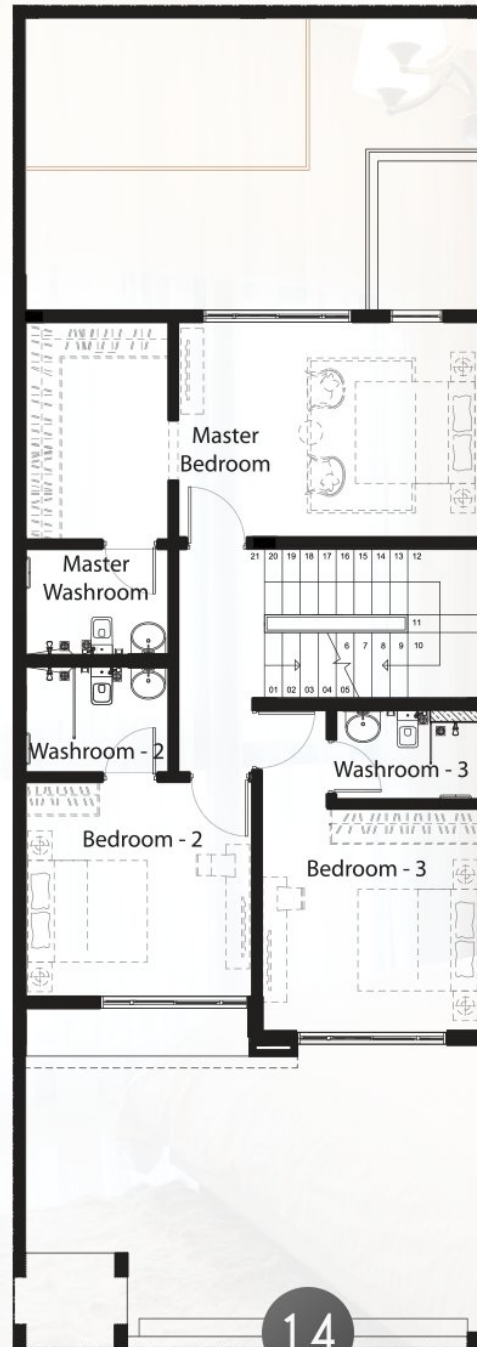
## FLOOR PLAN

### TYPE 1D

Total Built Area - 215 m<sup>2</sup>  
Land Area - 225 m<sup>2</sup>

- 3 Bedrooms
- Living Area
- Dining Hall
- Open Kitchen
- Dirty Kitchen
- Guest Toilet
- Storage
- Back Yard
- Maids Room
- Laundry Area
- Garage For 2 Cars





## FLOOR PLAN

### TYPE 1E

Total Built Area - 213 m<sup>2</sup>

Land Area - 180 m<sup>2</sup>

- 3 Bedrooms
- Living Area
- Dining Hall
- Open Kitchen
- Dirty Kitchen
- Guest Toilet
- Storage
- Back Yard
- Maids Room
- Laundry Area
- Garage For 2 Cars

## FLOOR PLAN

### TYPE 2B

Total Built Area – 258 m<sup>2</sup>  
Land Area – 284 m<sup>2</sup>

- 4 Bedrooms
- Majlis
- Living Area
- Dining Hall
- Open Kitchen
- Dirty Kitchen
- Guest Toilet
- Storage
- Back Yard
- Maids Room
- Laundry Area
- Garage For 2 Cars

