

NUMA

R E S E R V E

A home that lets
the outside in



Where boundaries fade
and life takes shape



Our vision is to inspire a life well-lived.. where serenity, beauty, and belonging exist in perfect harmony.

We believe true luxury whispers, never shouts.. it is effortless, private, and profoundly personal.

Rooted in trust, guided by clarity, and defined by excellence, we craft spaces where every detail is purposeful, and every home feels quietly extraordinary. Because a truly extraordinary home.. simply feels right!

Team MDRFA

CONTENT OVERVIEW

DISCLAIMER: All images, renders, and visuals included in this brochure are for illustrative purposes only and may not accurately represent the final product. Designs, layouts, materials, and specifications are subject to change without prior notice at the sole discretion of the developer. This brochure does not constitute a binding offer and is intended for general marketing and informational purposes only.

The Location	1
Prime Location with Easy Access	4
The Neighbourhood	6
Our Story	7
The Aspiration	8
Numa Reserve	9
Design Narrative	11
The Reserve	15
The Community	18
Exterior Visuals	25
Interior Visuals & Floorplans	36
Features & Inclusions	70
Master Plan	85
Payment Plan	87



THE LOCATION

A true community for families seeking both serenity and city connectivity in Dubai. Envision a life where lush parks and essential amenities are just a stroll away, fostering a peaceful environment for children to play and families to connect, without the long commutes.

Meydan offers a harmonious blend of tranquillity and convenience, providing families with a true oasis where the pulse of the city remains within easy reach, yet the comfort of a peaceful home prevails.



PRIME LOCATION WITH EASY ACCESS

15 min to
MBR City District 1

20 min to
Downtown Dubai & Burj Khalifa

20 min to
Dubai International Airport

25 min to
Burj Al Arab

25 min to
Jumeirah Bay

25 min to
Trump Golf Course

30 min to
Dubai Marina

35 min to
Palm Jumeirah



THE NEIGHBORHOOD

Envisioned by Sheikh Mohammed Bin Rashid Al Maktoum, Meydan is a popular luxury district in Dubai that fuses urban and natural environments. Centered around the Meydan Racecourse, which hosts the Dubai World Cup, the area has seen rapid development since its 2010 opening, now featuring high-end residences, retail, international schools, and leisure facilities.



OUR STORY

THE ASPIRATION

The vibrant energy of Dubai, while exhilarating, often leaves a longing for something more: a community where families can reconnect amidst the quiet beauty of nature.

Imagine a haven, tucked away from the city's hustle, where children laugh freely in lush gardens, neighbors become lifelong friends, and every day feels like a resort-inspired retreat. A community that embraces the beauty of simple elegance through exquisite materials, impeccable craftsmanship, and a respect for the planet.



NUMA RESERVE

Picture waking up to the gentle sounds of nature, stepping out onto a sun-drenched terrace, and knowing that every detail, from the handcrafted finishes to the thoughtfully designed spaces, has been curated for you. This dream of serene living, of a true community where life unfolds at its own pace, is what so many families yearn for.



Numa Reserve was born from a desire to craft a true community, where nature and quiet luxury converge and exude a refined sense of elegance in Dubai. A community bathed in golden light, where lush greenery and crisp air invite you to slow down and reconnect with loved ones and nature alike.

Here, elegant villas offer secluded peace, where families can flourish in a serene and beautiful environment, seamlessly integrated with intelligent home technology for utmost convenience. Numa Reserve is more than a home. It offers a refined lifestyle crafted for those seeking a harmonious blend of privacy, natural tranquillity, and a strong sense of belonging.



Each villa is a testament to thoughtful, meticulous design that seamlessly blends elegant aesthetics with the practical needs of modern life. From the moment you arrive, you'll sense a different rhythm – a peaceful ambience that invites you to slow down and savour life's precious moments.

Numa Reserve isn't just a place to reside. It's a place to belong and create memories for a lifetime.

A person wearing a long, flowing white dress is walking barefoot across a light-colored floor. The floor is covered with long, rectangular shadows cast by a window or glass partition. To the left, a large, dark green plant with long, thin leaves is partially visible, its shadow also cast onto the floor. The overall atmosphere is serene and minimalist.

DESIGN NARRATIVE

WELCOME
TO QUIET
ELEGANCE

EVERY ELEMENT
MADE TO BELONG



ILLUSORY LIKE A FLEETING MIRAGE

Numa Reserve's design offers a seamless transition to an elusive beauty, valuing translucency, comfort, nature, and connection, while ensuring safety and privacy. The aesthetic creates light, airy spaces that blend indoor and outdoor living, fostering a refined lifestyle for families within a connected community.

Architectural Firm



ZAD STUDIO



THE RESERVE

WELCOME TO
NUMA
RESERVE



MASTER PLAN



THE COMMUNITY

WHERE SECURITY MEETS SERENITY



Welcome to Numa Reserve, where your peace of mind is paramount thanks to our discreet, cutting-edge security. A community designed for secure and sophisticated living in the safest city in the world.





Where tranquil living and a strong sense of community flourish amidst nature-inspired beauty, all while enjoying effortless access to the city's offerings. Experience a harmonious blend of peaceful retreat and urban connection.

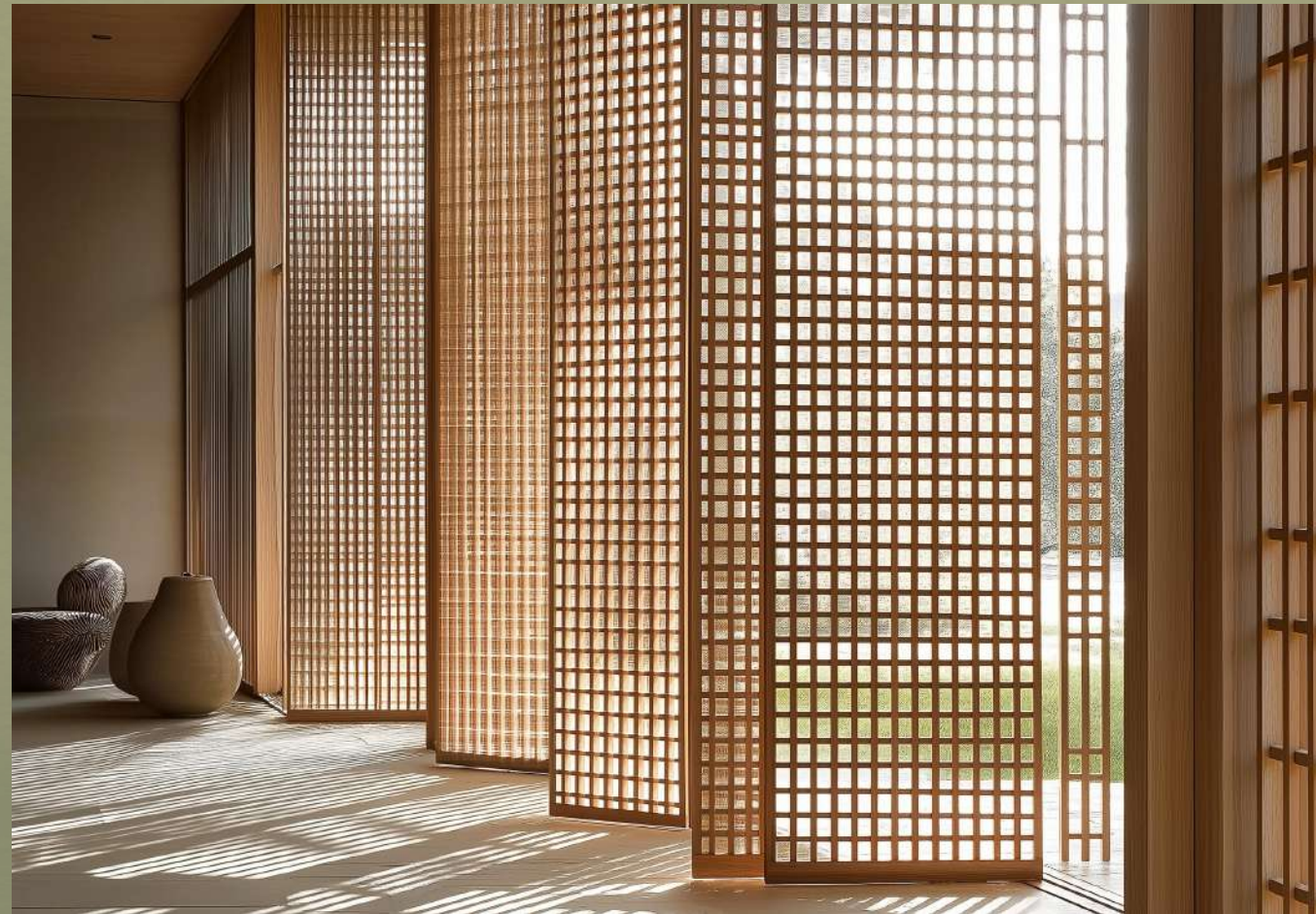
A SPACE TO PAUSE AND BELONG



A true community where you can unwind in a setting where modern elegance and nature exist in perfect balance. This is where your family's story unfolds.



TIMELESS AESTHETIC



EXTERIOR VISUALS





WELCOME HOME

Beyond its modern design, experience a home where smart features anticipate your needs – creating an effortless and welcoming environment for your family.



THE NATURAL WORLD REFINED FOR LIVING



Experience unmatched privacy in a villa designed for peaceful living. A serene sanctuary where nature meets refined comfort, offering a quiet escape from the outside world.





EVERY VIEW
CURATED

Where thoughtful design,
natural materials and
effortless flow, create a home
that lasts.

EVERY MOMENT IN HARMONY WITH NATURE

Peaceful. Private. Perfect.





EFFORTLESS LIVING WITH EXCEPTIONAL DESIGN



INTERIOR VISUALS & FLOORPLANS

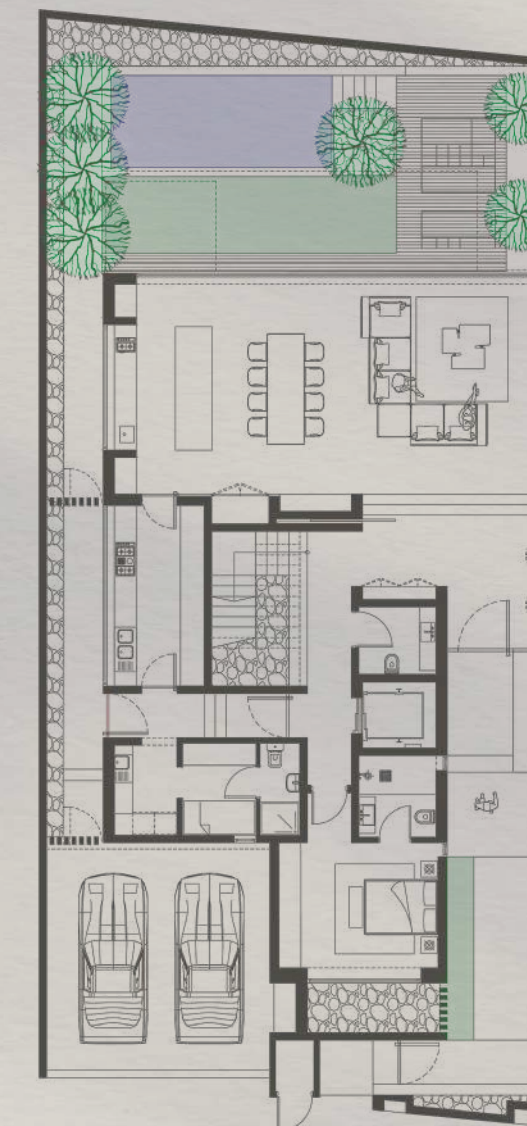
TPOLOGY 1

BUA 6,020 sq. ft.
Plot 4,300 sq. ft.

Crafted for those who seek simplicity in design and soulfulness in space. These homes offer open layouts, natural light, and seamless transitions between indoor calm and outdoor connection.



TYPE 1A | 5 UNITS



Ground Floor



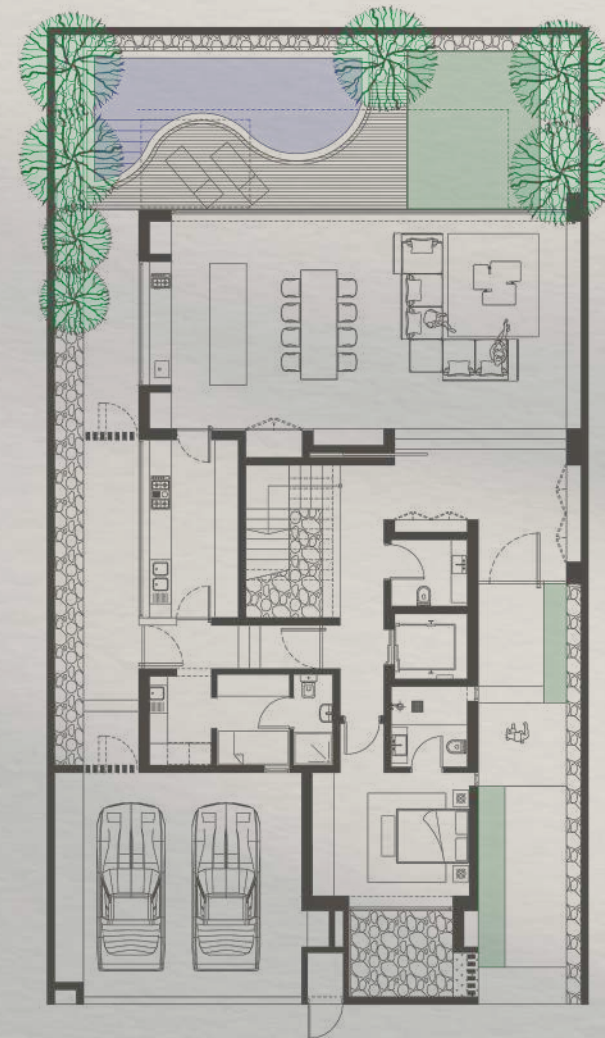
First Floor



Second Floor

Floorplans are for illustrative purposes only and may be subject to minor variations.

TYPE 1B | 6 UNITS



Ground Floor



First Floor



Second Floor

Floorplans are for illustrative purposes only and may be subject to minor variations.

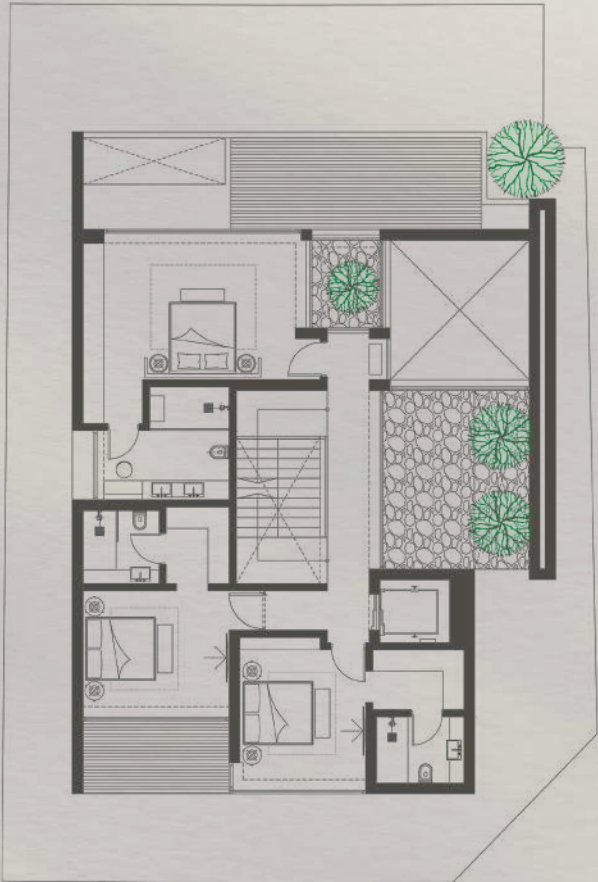




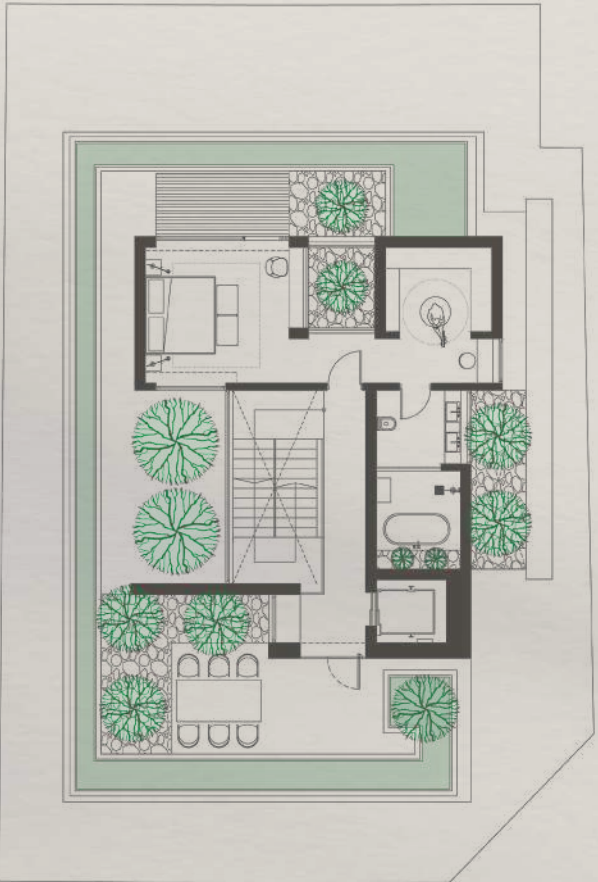
TYPE 1C | 5 UNITS



Basement



Ground Floor



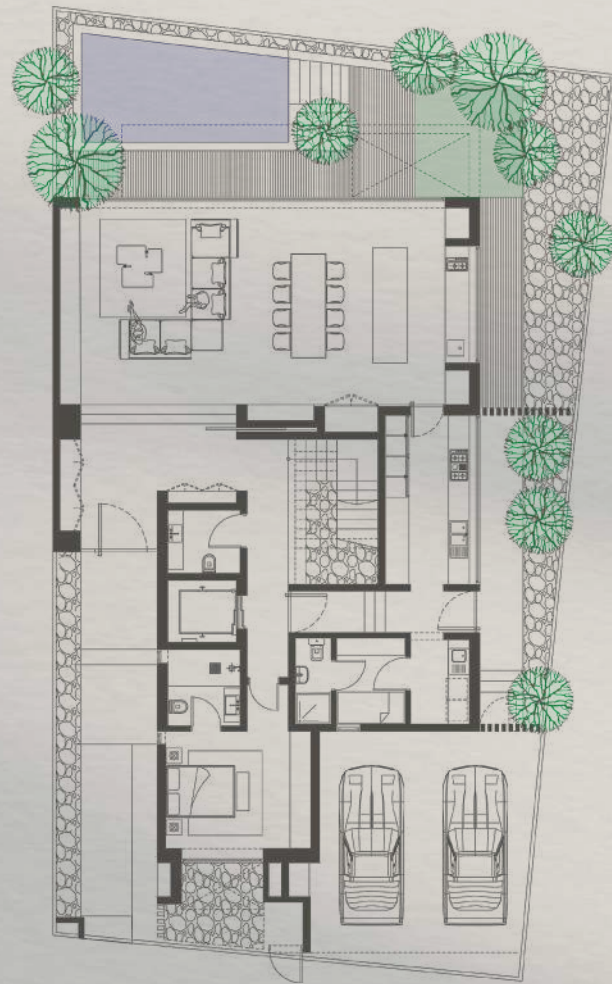
First Floor



Second Floor

Floorplans are for illustrative purposes only and may be subject to minor variations.

TYPE 1D | 1 UNIT



Ground Floor



First Floor



Second Floor

Floorplans are for illustrative purposes only and may be subject to minor variations.



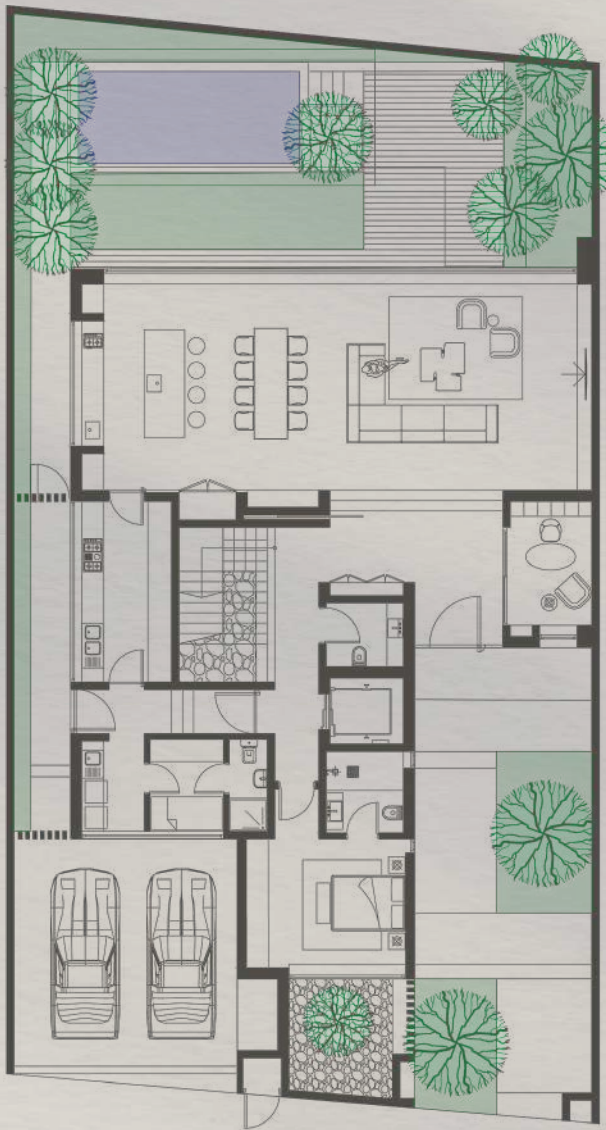
TYPOLGY 2

BUA 6,800 sq. ft.
Plot 5,000 sq. ft.

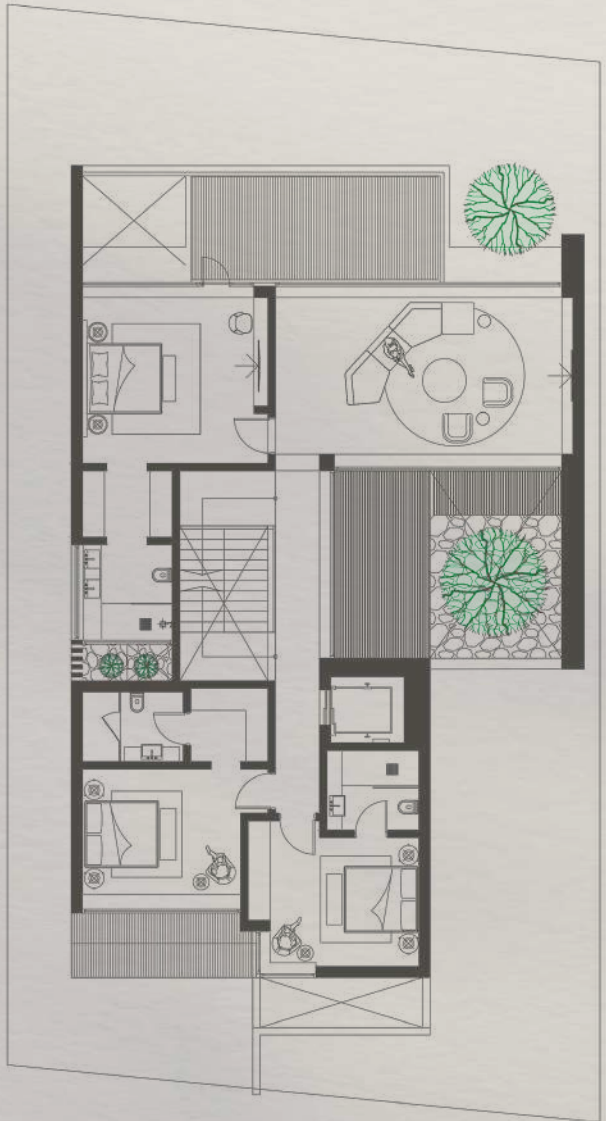
Balancing form and function, these homes offer room to grow — with enhanced privacy, landscaped courtyards, and family-friendly layouts that invite togetherness while allowing space to pause.



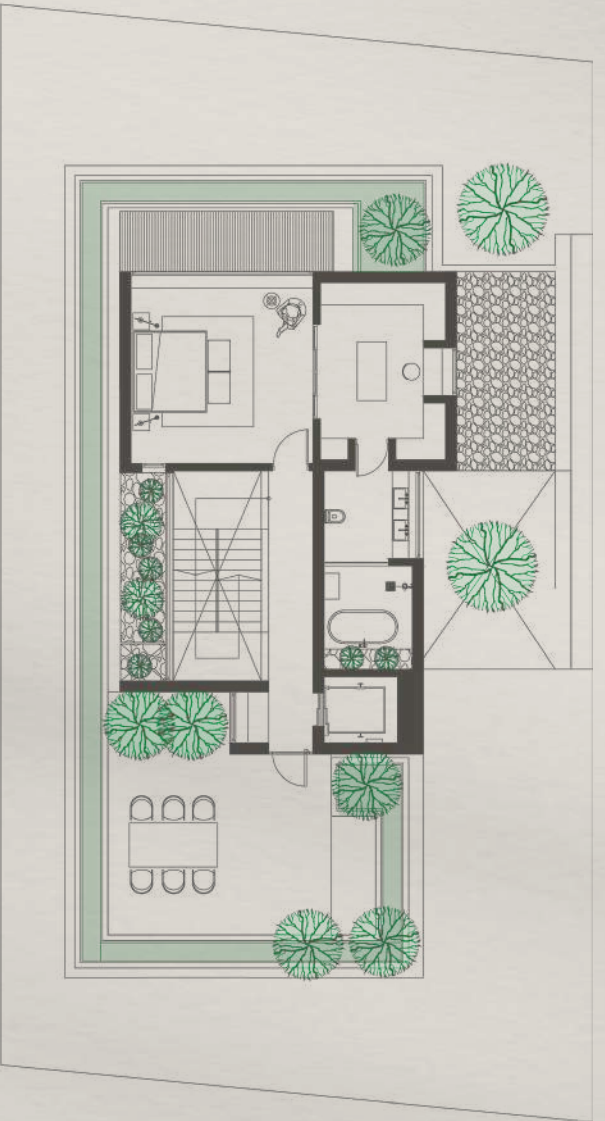
TYPE 2A | 4 UNITS



Ground Floor



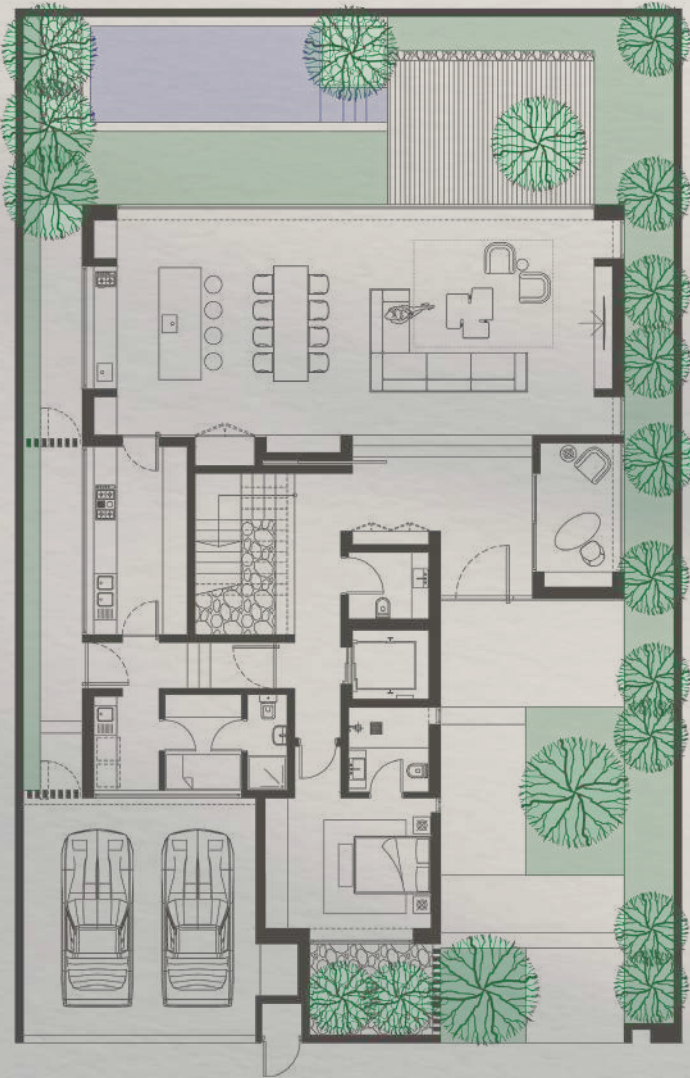
First Floor



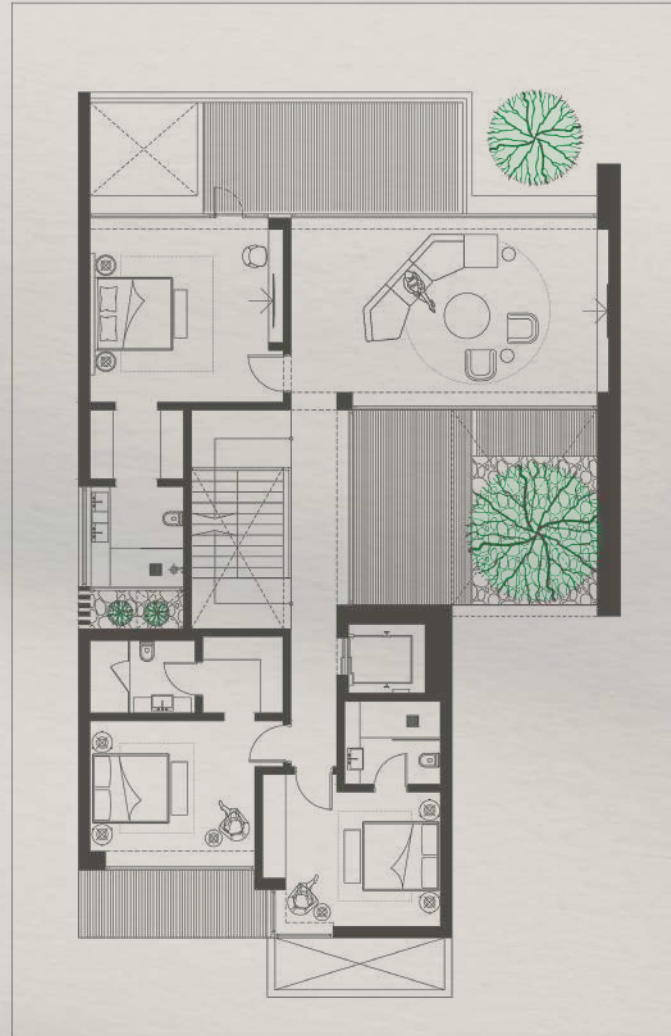
Second Floor

Floorplans are for illustrative purposes only and may be subject to minor variations.

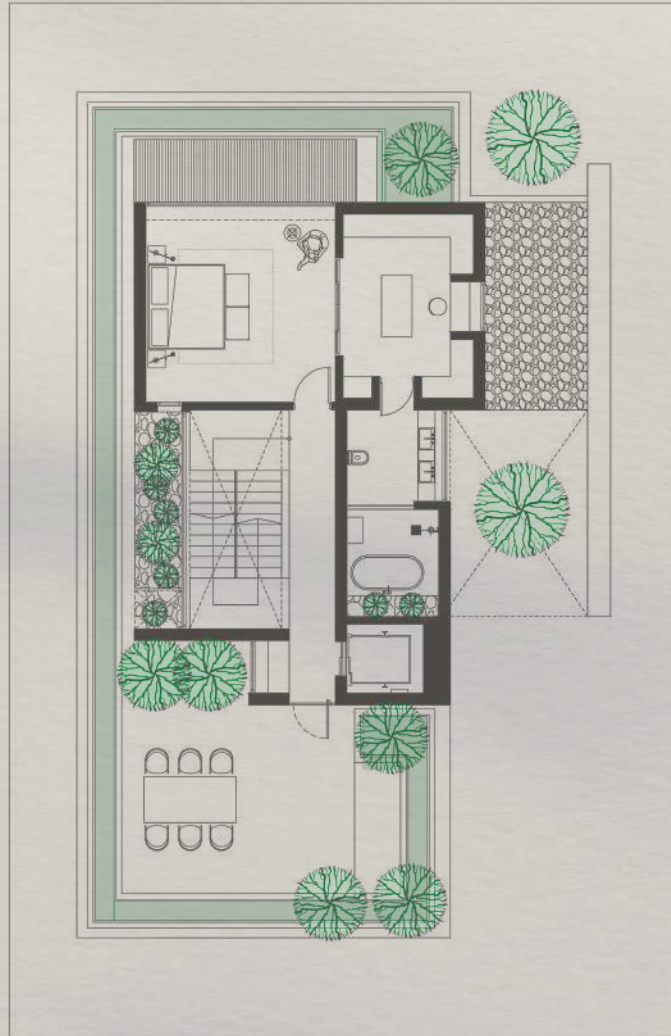
TYPE 2B | 2 UNITS



Ground Floor



First Floor



Second Floor

Floorplans are for illustrative purposes only and may be subject to minor variations.





TYPE 2C | 1 UNIT



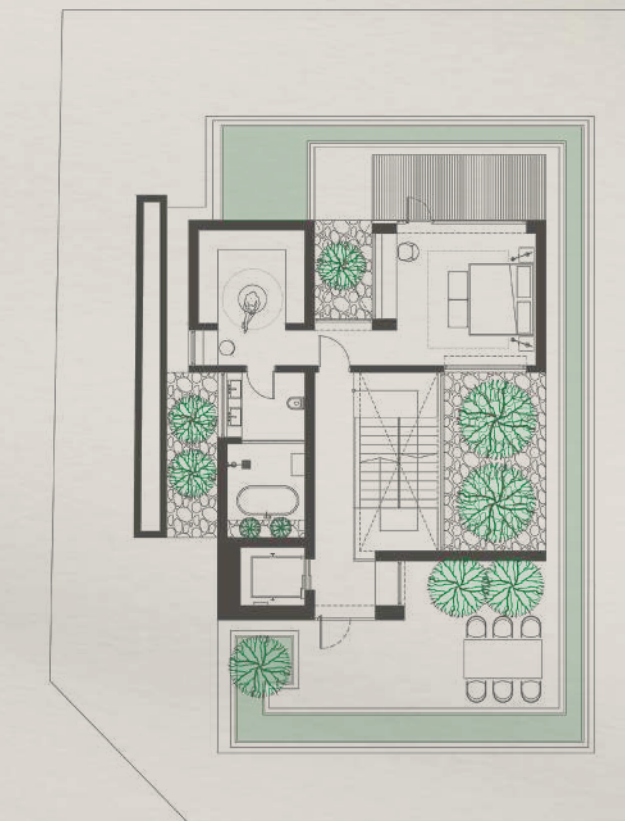
Basement



Ground Floor



First Floor



Second Floor

Floorplans are for illustrative purposes only and may be subject to minor variations.

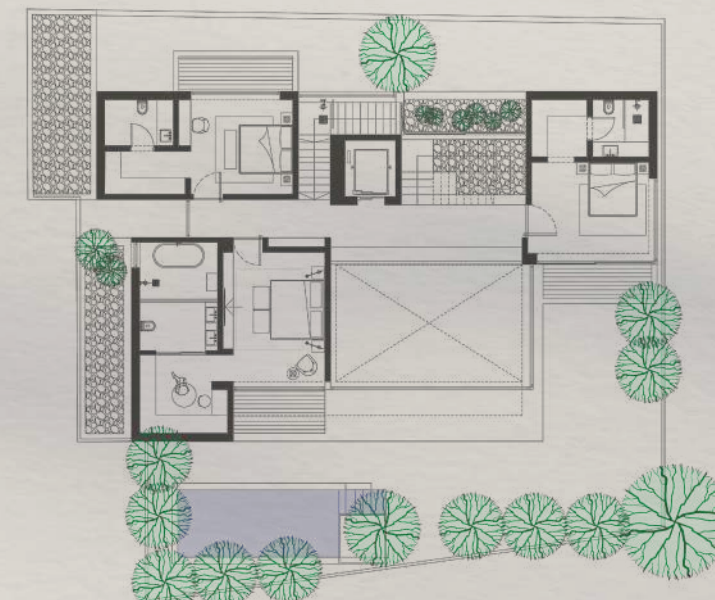
TYPE 2D | 1 UNIT



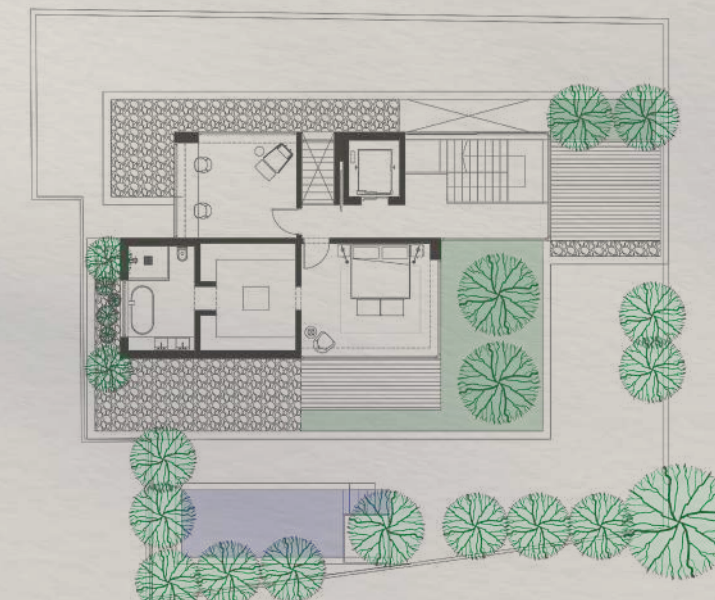
Basement



Ground Floor



First Floor



Second Floor

Floorplans are for illustrative purposes only and may be subject to minor variations.



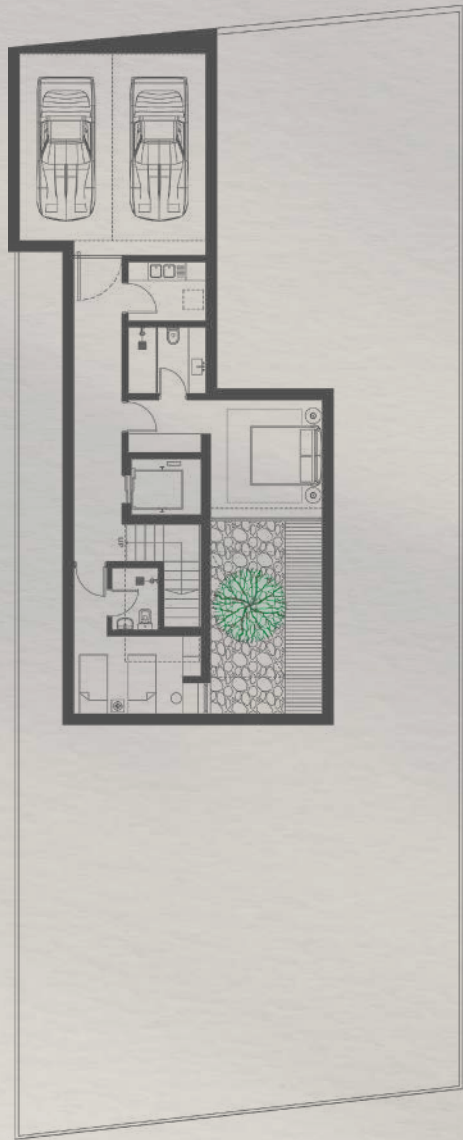
TYPOLGY 3

BUA 7,700 sq. ft.
Plot 5,500 sq. ft.

More than just generous in size, these homes elevate everyday living with flexible spaces, dual lounges, and natural textures that echo the landscape.



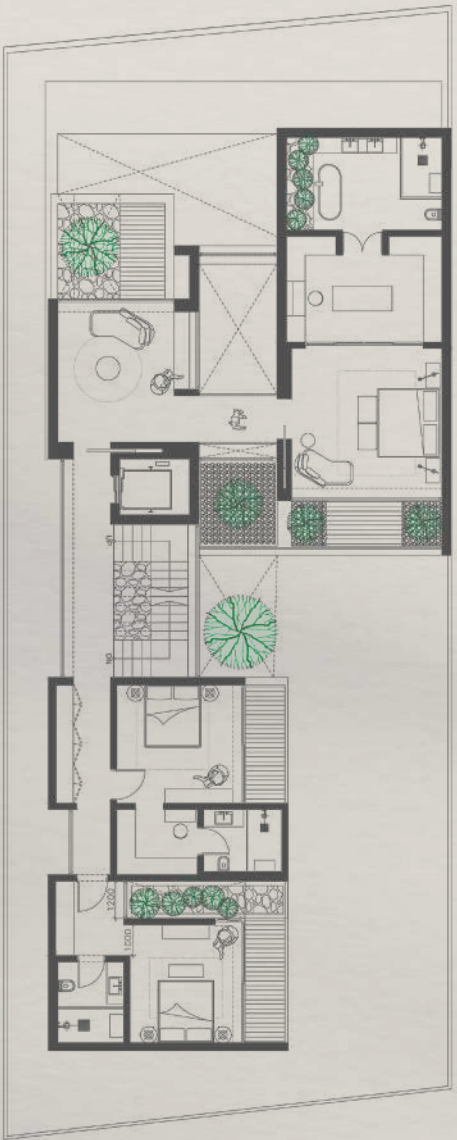
TYPE 3A | 4 UNITS



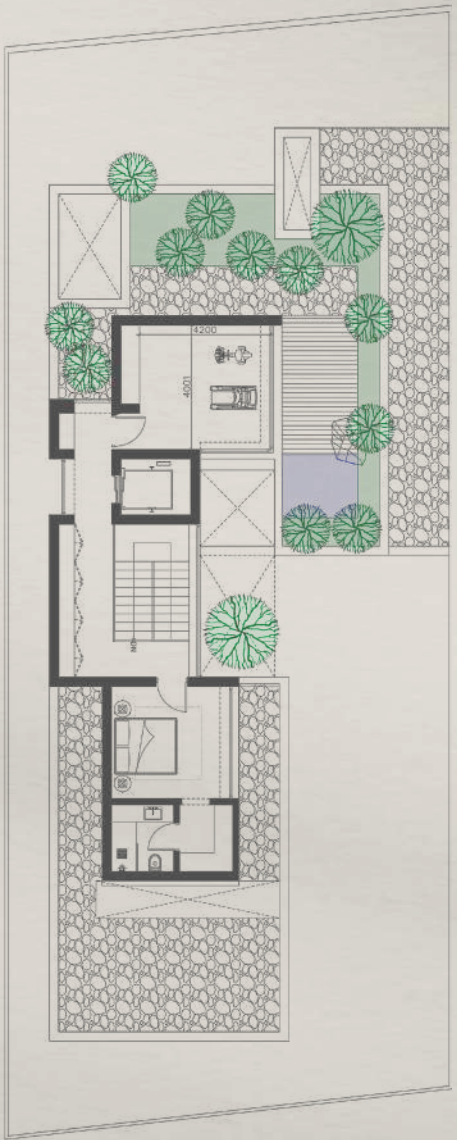
Basement



Ground Floor



First Floor



Second Floor

Floorplans are for illustrative purposes only and may be subject to minor variations.

TYPOLGY 4

BUA 8,500 sq. ft.
Plot 6,000 sq. ft.

A statement of quiet elegance — with expansive indoor volumes, private gardens, and layered spatial experiences made for those who value both solitude and celebration.



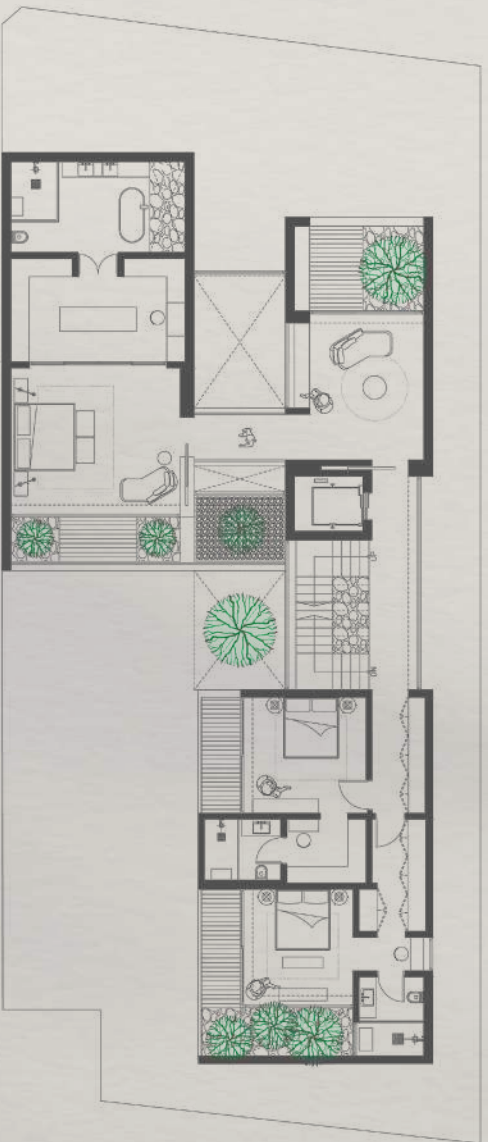
TYPE 4A | 2 UNITS



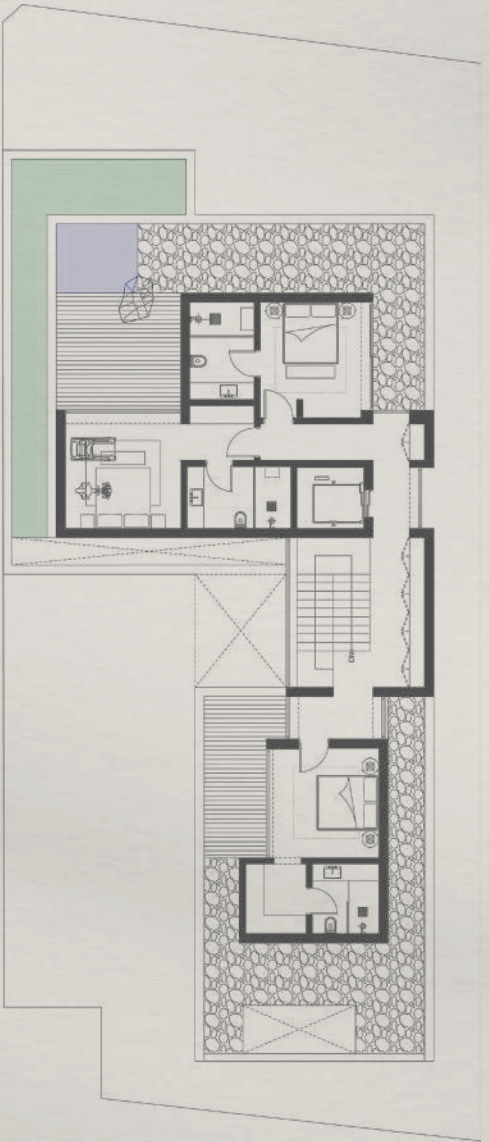
Basement



Ground Floor



First Floor



Second Floor

Floorplans are for illustrative purposes only and may be subject to minor variations.

TYOLOGY 5

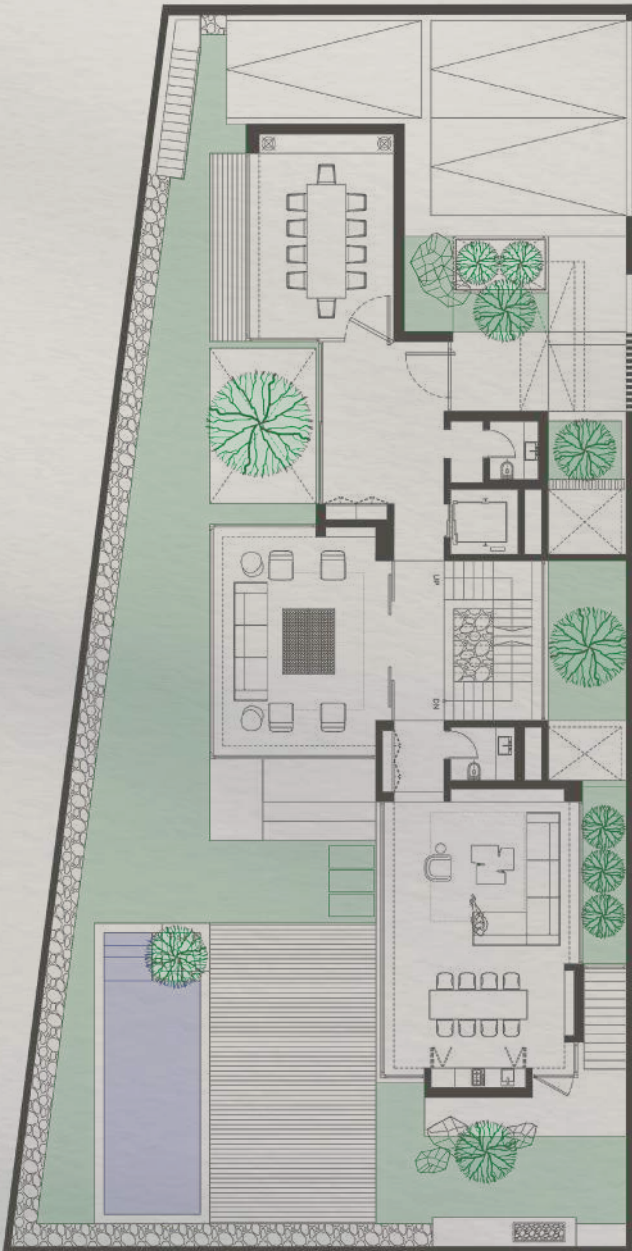
BUA 10,500 sq. ft.

Plot 7,000 sq. ft.

Designed for multi-generational living or those who love to host, this home is defined by flow — from shaded verandas to lush courtyards, where every detail encourages connection.



TYPE 5A | 1 UNIT



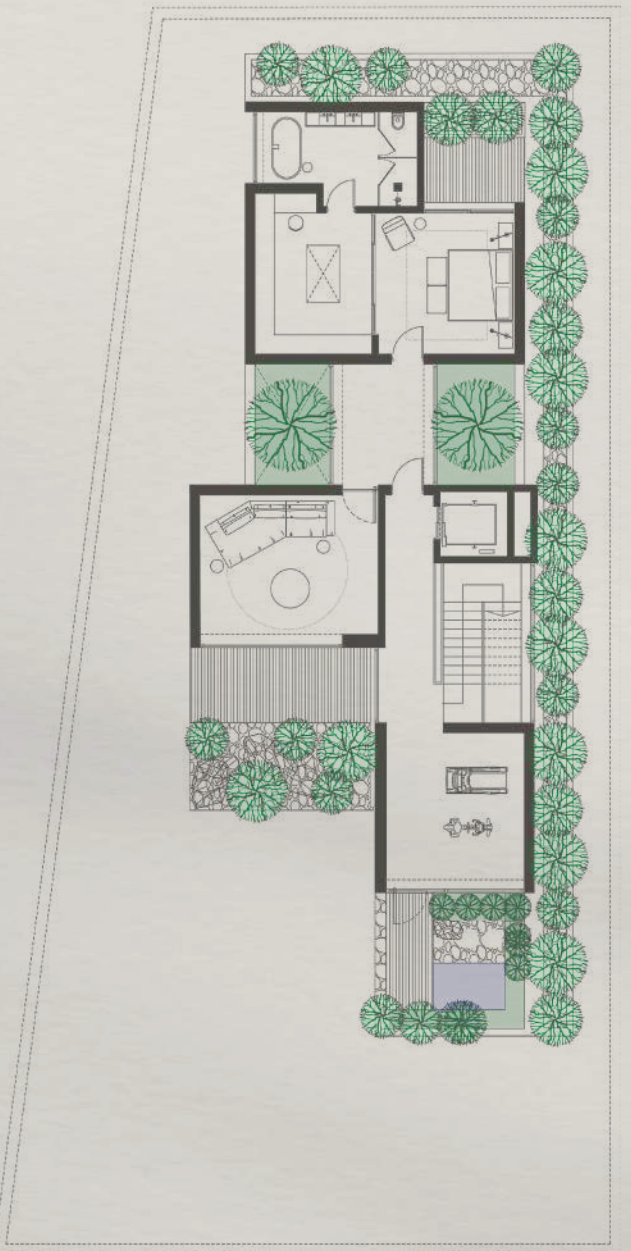
Basement



Ground Floor



First Floor

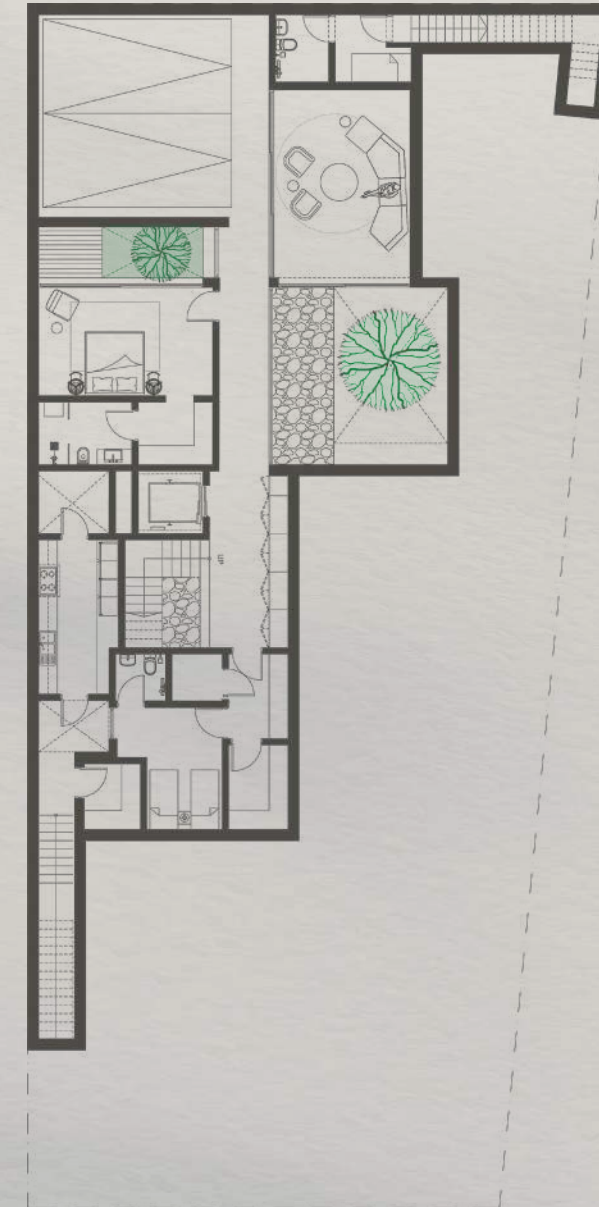


Second Floor

Floorplans are for illustrative purposes only and may be subject to minor variations.



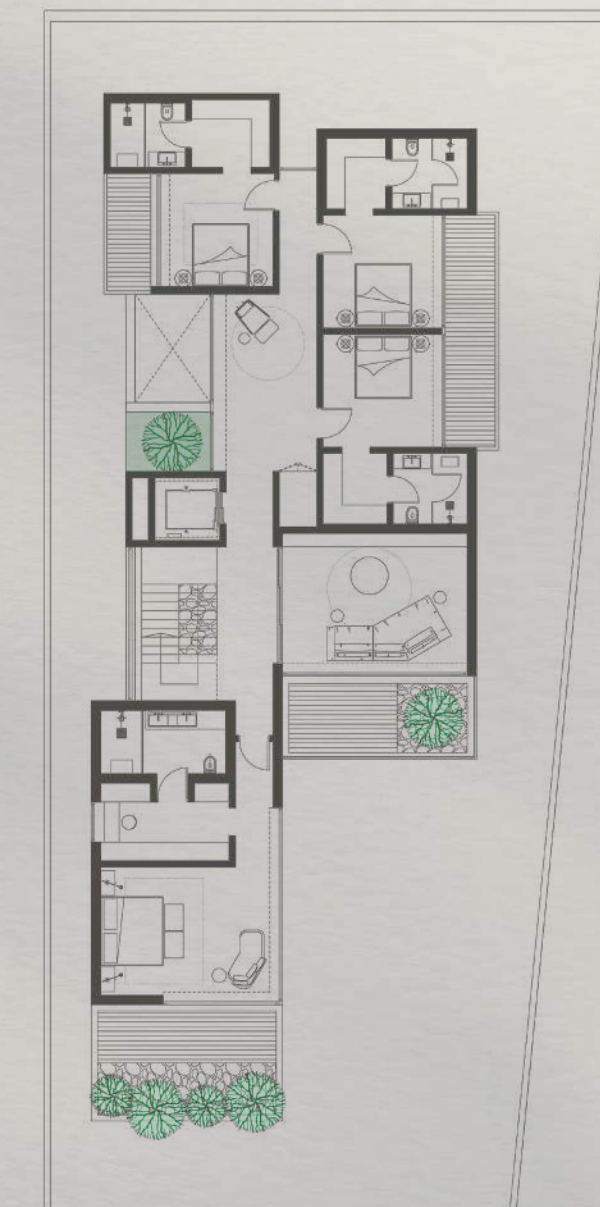
TYPE 5B | 1 UNIT



Basement



Ground Floor



First Floor



Second Floor

Floorplans are for illustrative purposes only and may be subject to minor variations.

TYOLOGY 6

BUA 15,300 sq. ft.

Plot 8,000 sq. ft.

At the pinnacle of Numa living, this typology offers the most spacious layout — crafted with bespoke touches, serene views, and a rare sense of retreat. A home that feels like forever.

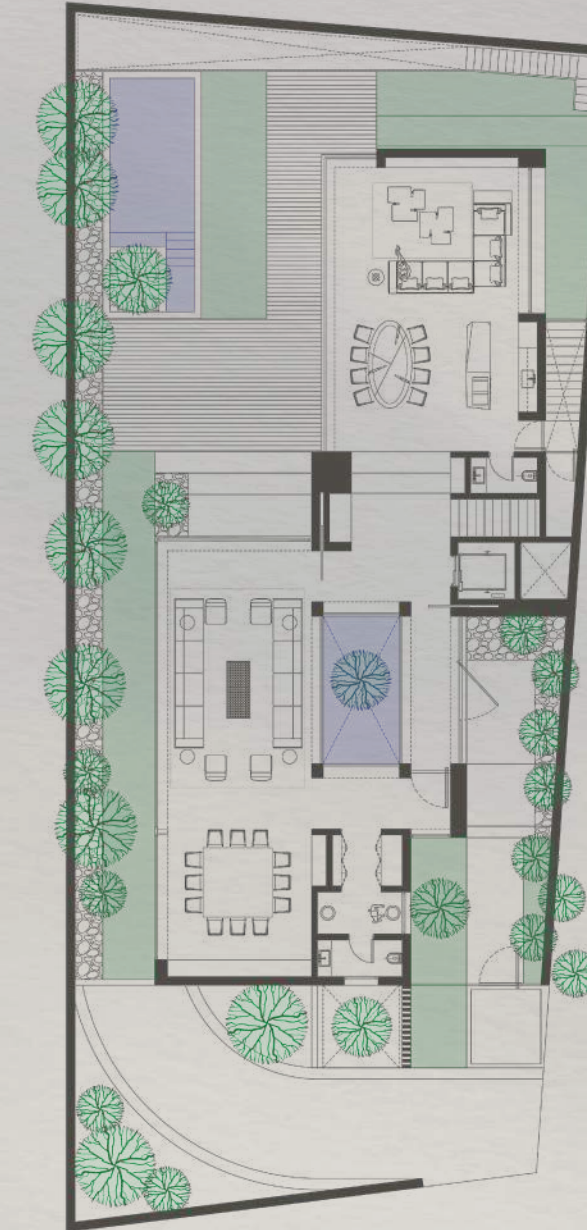




TYPE 6A | 1 UNIT



Basement



Ground Floor



First Floor

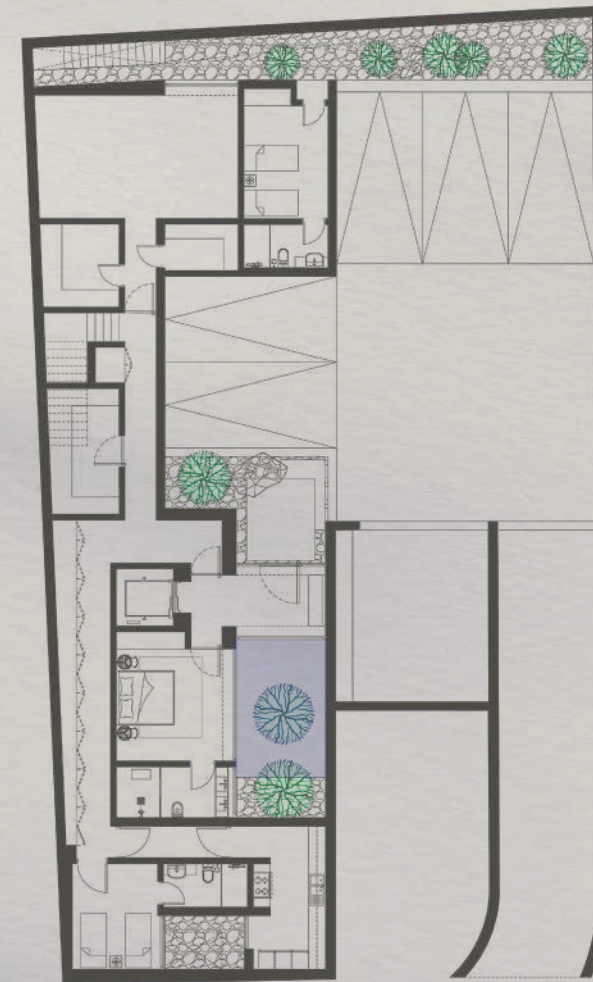


Second Floor

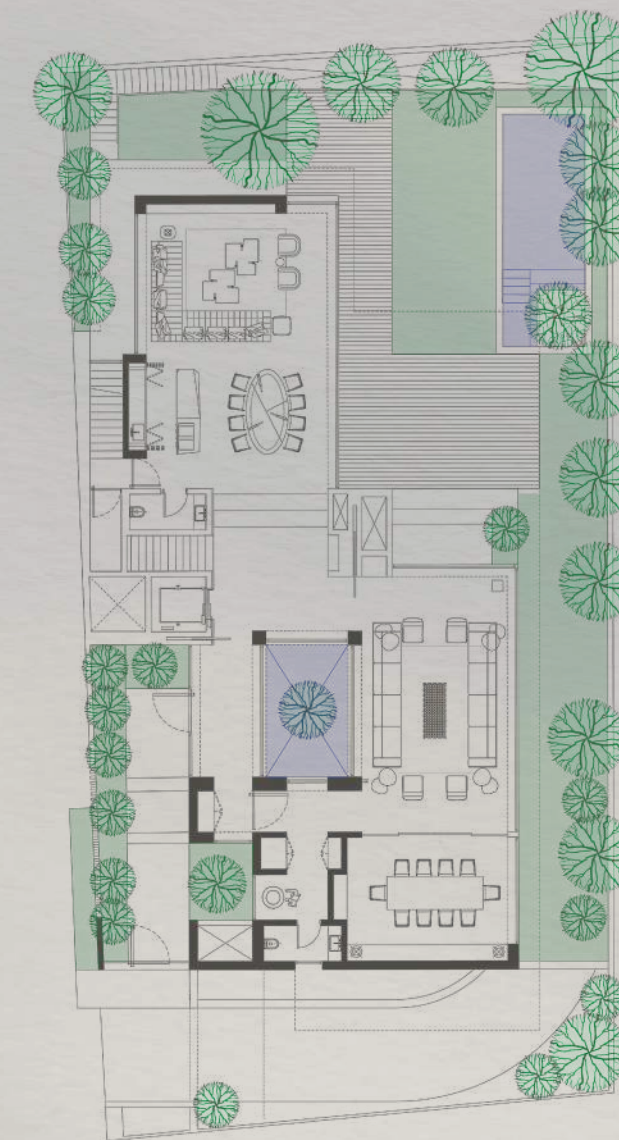
Floorplans are for illustrative purposes only and may be subject to minor variations.



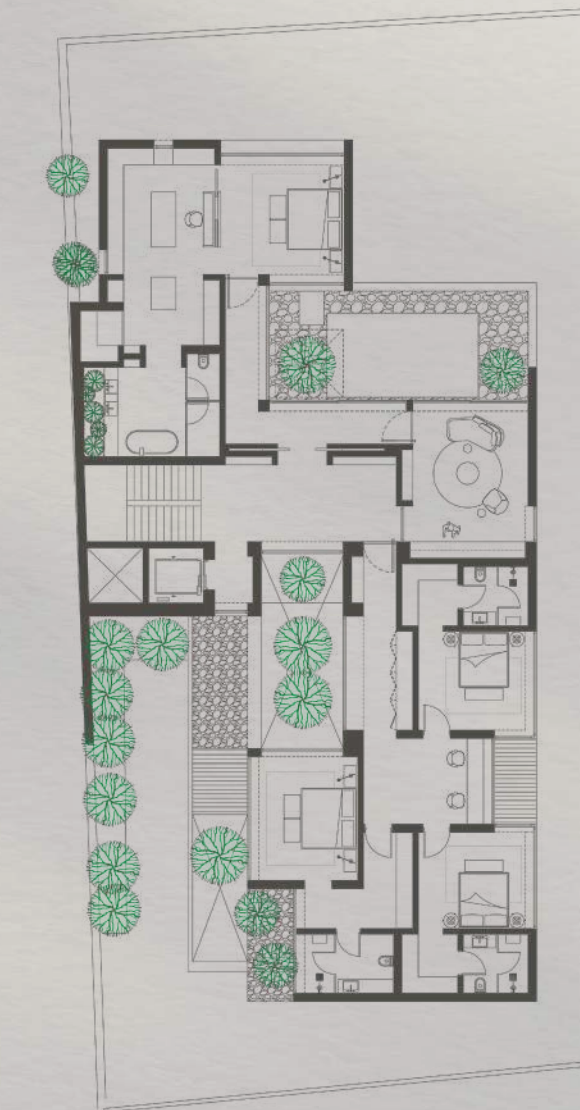
TYPE 6B | 1 UNIT



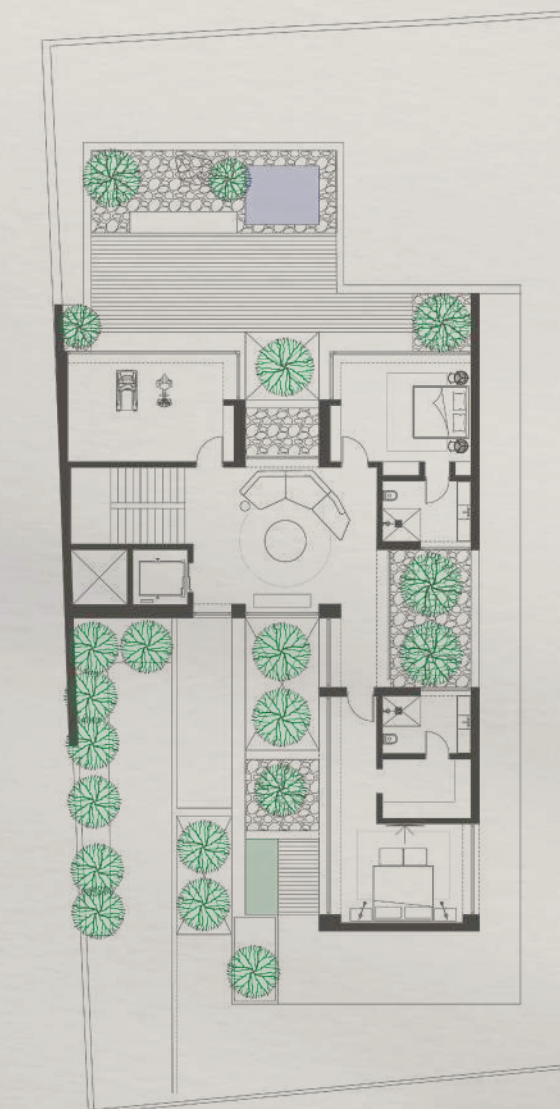
Basement



Ground Floor



First Floor



Second Floor

Floorplans are for illustrative purposes only and may be subject to minor variations.

A wide-angle photograph of a modern interior hallway. The walls are covered in dark, vertical wood slats. The floor is made of light-colored wood. In the center, a large window looks out onto a lush green landscape with trees. A dark, low-profile sofa is visible through the window. The lighting is soft and natural, coming from the window.

FEATURES AND INCLUSIONS

Carefully selected materials that
embody subtle refinement & a deep
respect for nature

FINELY CRAFTED BATHROOM FIXTURES



Exquisite design meets
lasting quality.





AN AREA THAT REFLECTS YOUR STYLE

Your dream walk-in closet awaits.



HARMONIOUS OUTDOOR LIVING



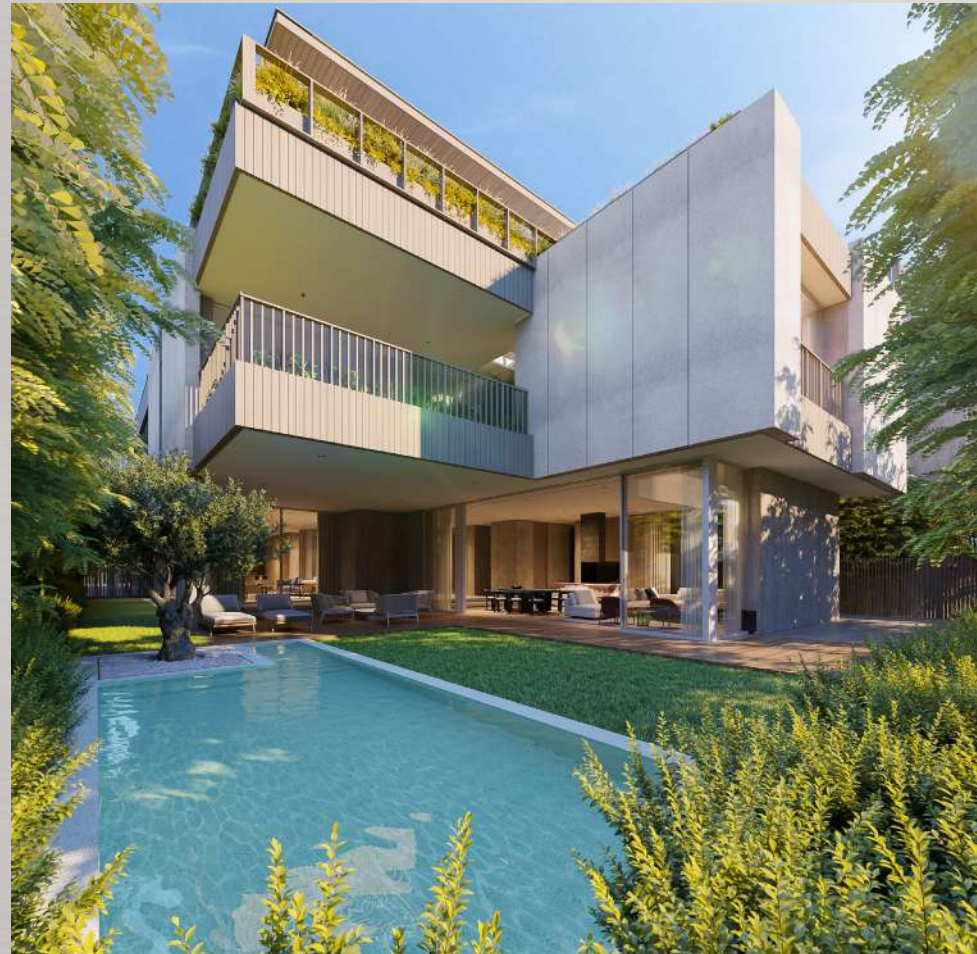
Thoughtfully designed landscapes that
extend your home's embrace.

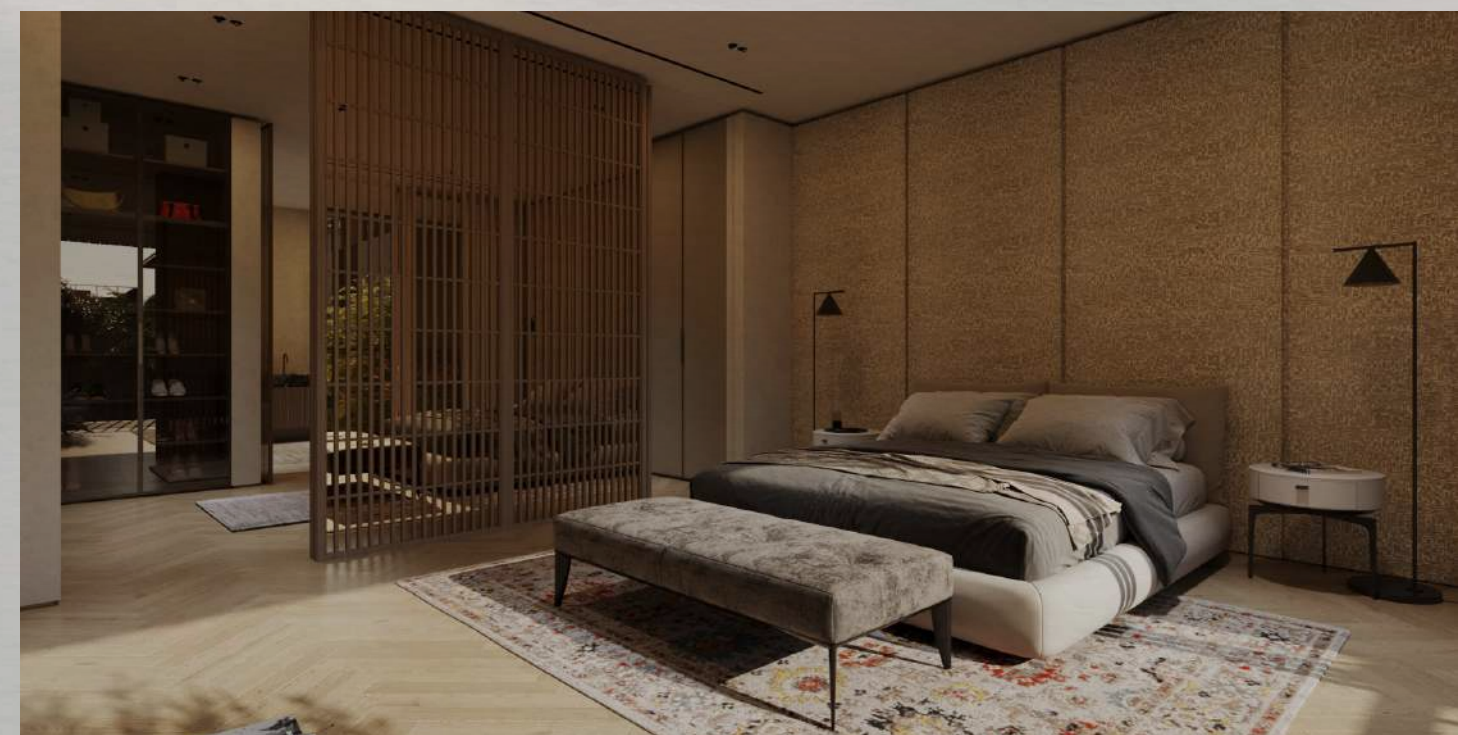




SWIM ON YOUR OWN SCHEDULE

Temperature controlled swimming pools all year round.





THE DIFFERENCE OF UNRAVELLED CRAFTSMANSHIP

Miele appliances and high end flooring
that will enrich your lifestyle.



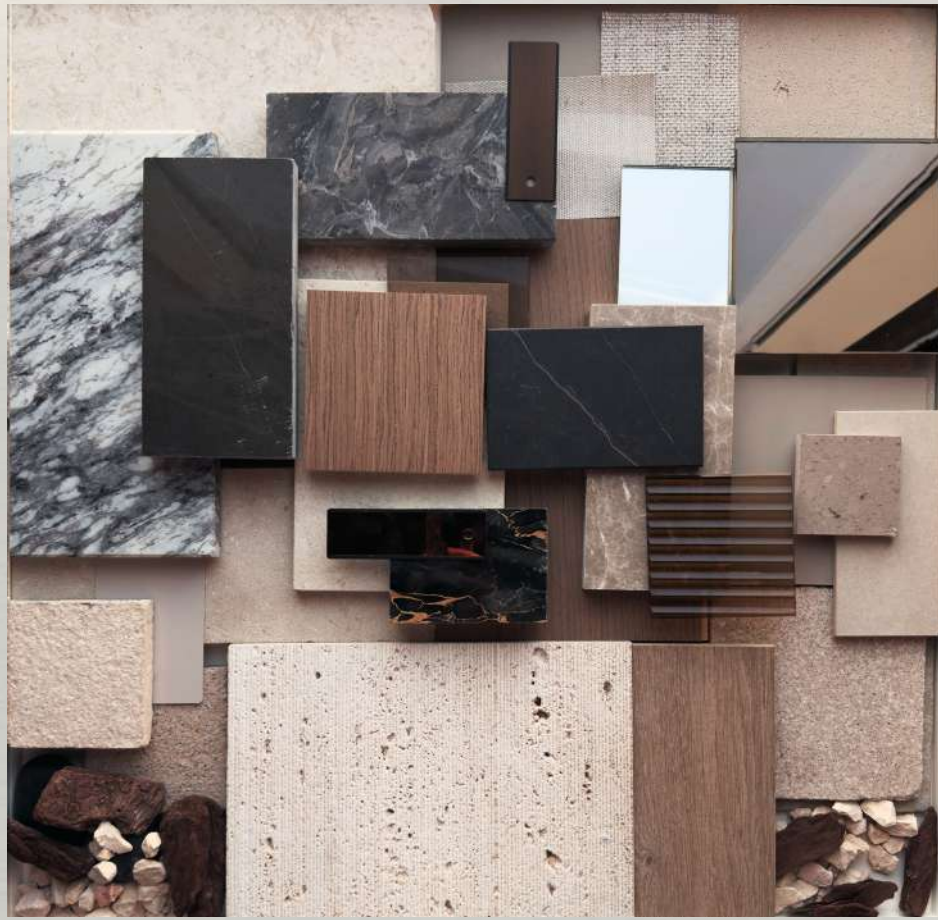


A state-of-the-art car lift that ascends to your private basement garage.



EFFORTLESS
PARKING FOR
ELEVATED
CONVENIENCE

STEP INTO THE FEELING



A curated selection of textures, tones, and natural light. Each detail is chosen to evoke a feeling.





MASTER PLAN OVERVIEW

Type 1 | Plot 4,300 sq. ft.

- Typology 1A
- Typology 1B
- Typology 1C
- Typology 1D

Type 2 | Plot 5,000 sq. ft.

- Typology 2A
- Typology 2B
- Typology 2C
- Typology 2D

Type 3 | Plot 5,500 sq. ft.

- Typology 3A

Type 4 | Plot 6,000 sq. ft.

- Typology 4A

Type 5 | Plot 7,000 sq. ft.

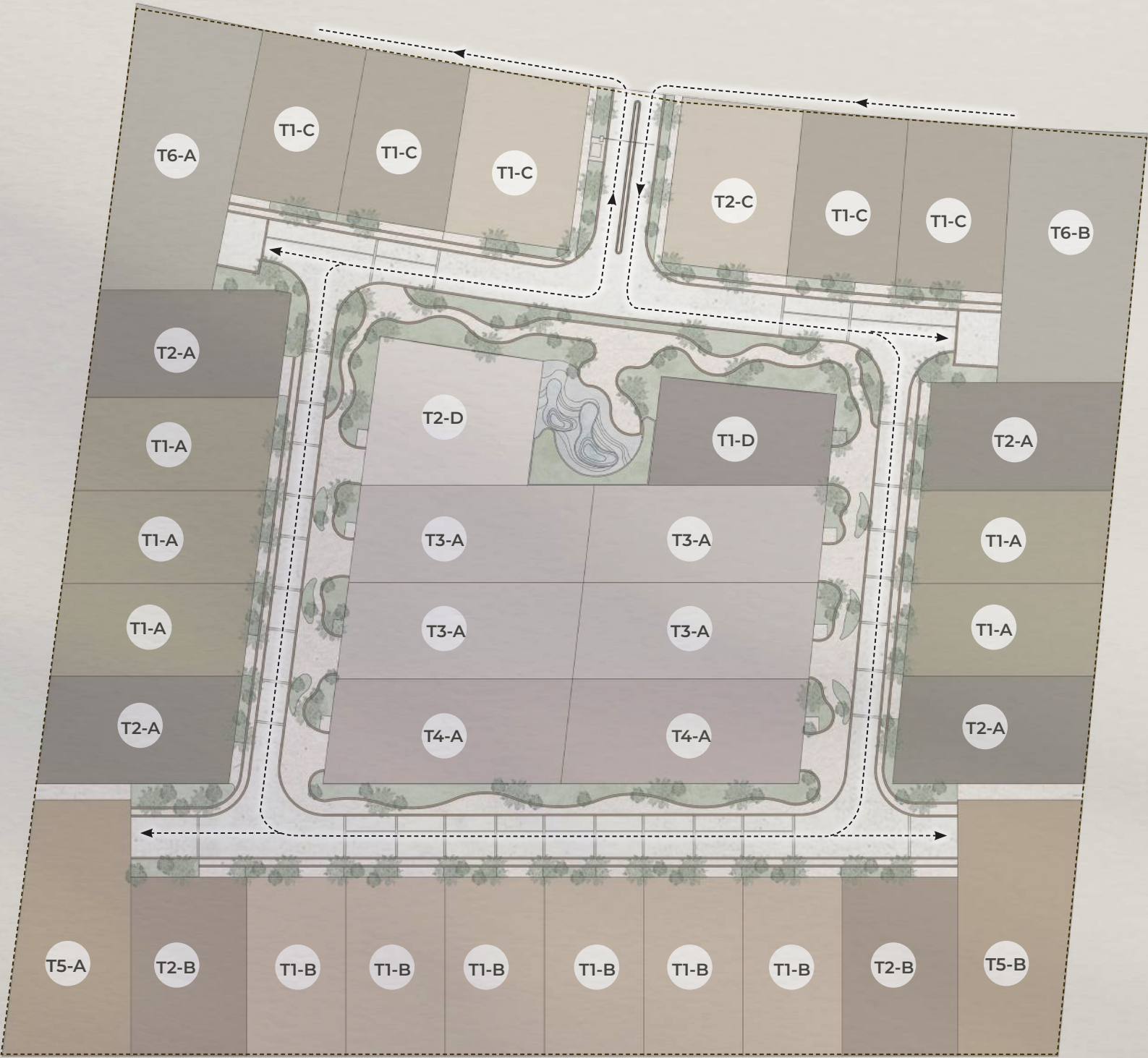
- Typology 5A
- Typology 5B

Type 6 | Plot 8,000 sq. ft.

- Typology 6A
- Typology 6B

Units

- 5
- 6
- 4
- 1
- 4
- 2
- 1
- 1
- 4
- 2
- 1
- 1
- 1
- 1



The Masterplan Overview is for illustrative purposes only.

PAYMENT PLAN

PAYMENT PLAN	
5%	Approx. Date of Escrow Opening – April 2025
5%	May 2025
5%	August 2025
5%	November 2025
10%	February 2026
5%	May 2026
65%	On Handover – Q3/Q4 2026
NOTE: The above are all approximate and may be subject to change as per the Escrow opening.	

NUMA

R E S E R V E

Mirfa IBC
Dubai Hills | Dubai
mirfaibc.com