



# BETA RESIDENCE

## Orientation

**BETA**<sup>TM</sup>  
DEVELOPMENTS  
SINCE 1993

**30**<sup>YRS.</sup> SHAPING  
COMMUNITIES,  
ENRICHING  
LIVES.



[www.betadevelopments.com](http://www.betadevelopments.com)

SHAPING COMMUNITIES, ENRICHING LIVES.



## Established

- Since 1993



## 3 Destinations

- 6th October
- Mostakbal City
- Obour city



## 10 UDP

Urban development  
Projects East & West



## 6+ Billion

Egyptian pounds  
investments



## 3200+

- Residential units
- Villas
- Townhouses



## 25000 Residents

1400 Club Members



## Residential Projects

- BETA Gardens 6th october
- BETA Golf Residence 6th october
- BETA Greens 6th october
- BETA Greens New cairo
- Golf House
- Golf Palace I
- Golf Palace II



## Commercial Projects

- Golf Corner
- Business Park
- Business square



## Sports Projects

- BETA Sporting club



## ISO 9001

Certified

# P I L L A R S



Research



Selecting prime  
locations



Intelligent designs



Cost effectiveness



Delivering promised  
quality on time



Integrated services



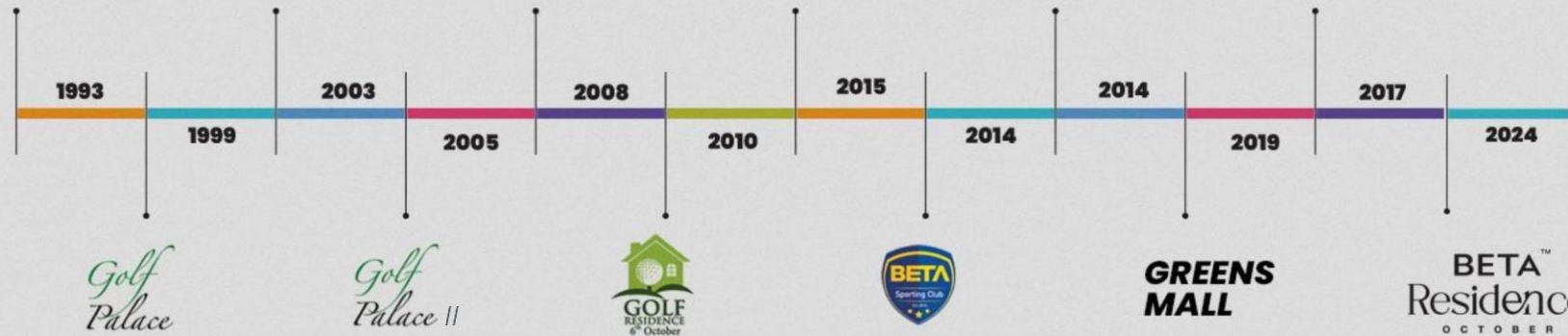
Strong facility  
management



High customer satisfaction



# M I L E S T O N E S



& NOW  
OUR **New  
Story**



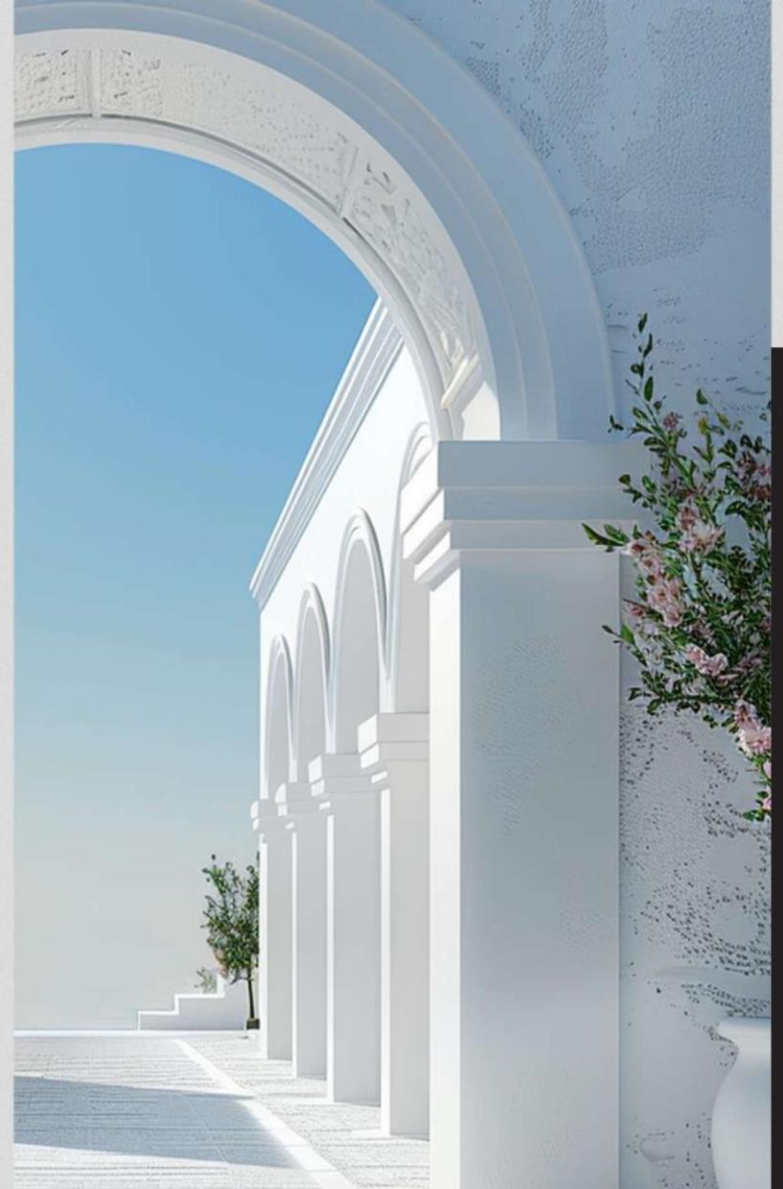
Three chapters to discover, One Story to write

BETA<sup>TM</sup>  
Residence  
OCTOBER

VOL.11

قصة جديدة

By  
BETA<sup>TM</sup>  
DEVELOPMENTS  
SINCE 1993

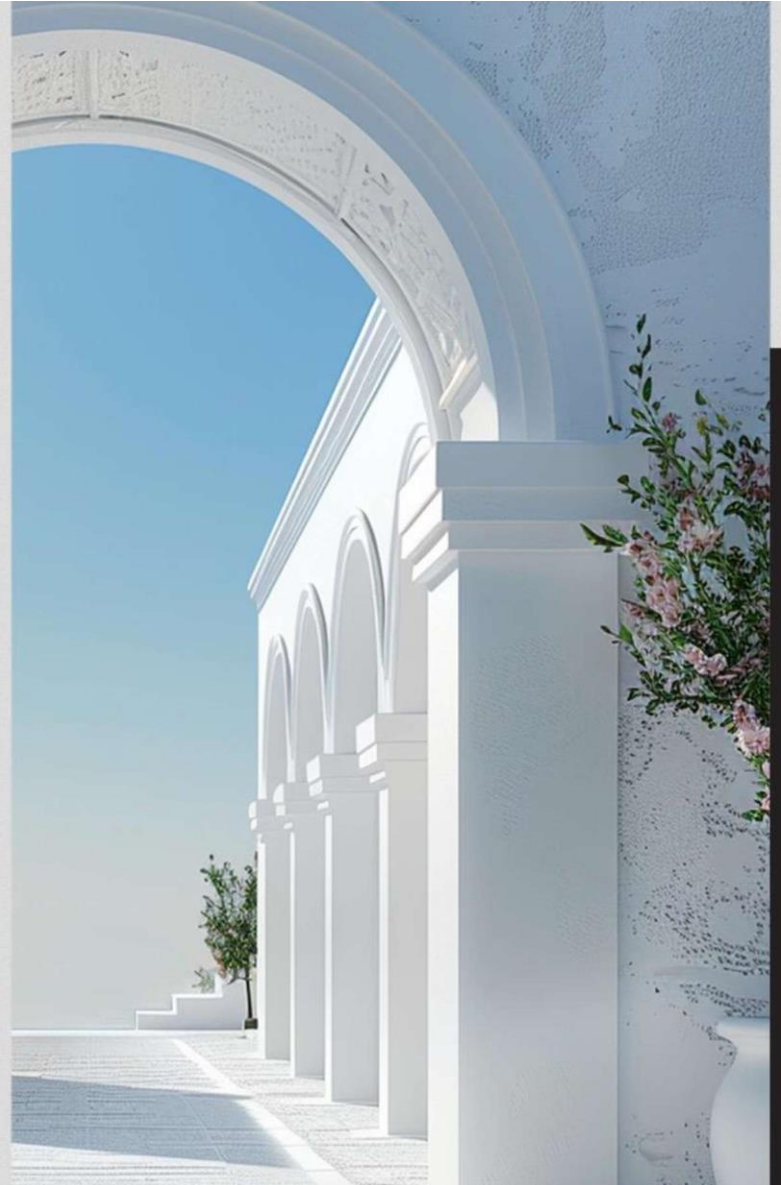


Three chapters to discover, One story to write



**BETA<sup>TM</sup>**  
**Residence**  
OCTOBER

**LANDSCAPE**  
DESIGN CONCEPT



Three chapters to discover, One Story to write



BETA<sup>TM</sup>  
Residence  
OCTOBER



قصة جديدة

BETA<sup>TM</sup>  
DEVELOPMENTS  
ÖKOPLAN<sup>TM</sup>  
LANDSCAPING  
Frank Söhler



### About Ökoplan for Landscaping

Ökoplan Landscaping stands as a distinguished and award-winning consultancy firm, boasting numerous national and international awards.

Ökoplan Landscaping has significantly influenced the landscape architecture scene in Egypt and the middle east for nearly **three decades**

By fostering collaboration among site engineers, design teams, and technical teams, ensures the seamless transition from **concept to reality**.



# BETA STORY MAP

## A touch of the Mediterranean Gardens around the world

### Greece

Greek gardens are a reflection of timeless simplicity and harmony, rooted in the natural beauty of the Mediterranean. These gardens celebrate balance, blending lush greenery with rustic stone pathways, vibrant wildflowers, and aromatic herbs.

### La Rambla

La Rambla, a vibrant boulevard that pulses with life, culture, and history, with the tree-lined promenade is a tapestry of sights and sounds.

### ANDALUSIA

Andalusia Gardens are a living tapestry of Moorish elegance and natural beauty, where history and tranquility intertwine. These gardens, inspired by centuries-old traditions, feature a harmonious blend of vibrant blooms, and symmetrical pathways.

### Piazza Italia

Piazza Italia, a charming slice of Italian elegance, is a gathering place where history, culture, and community converge. The square radiates a welcoming energy, drawing people together.



# CONCEPTUAL DESIGN SKETCH





# LANDSCAPE CIRCULATION



# ZONING



- Entrance Roundabout
- Piazza Italian zone
- La Rambla zone
- Andalusian Dreams zone
- Grecian Retreat zone
- Club House zone

# LA RAMBLA ZONE

Designing a La Rambla-style landscape layout takes inspiration from the iconic pedestrian boulevard in Barcelona, blending vibrant urban life with natural and artistic elements.





# CONCEPTUAL DESIGN SKETCH

## LA RAMBLA ZONE

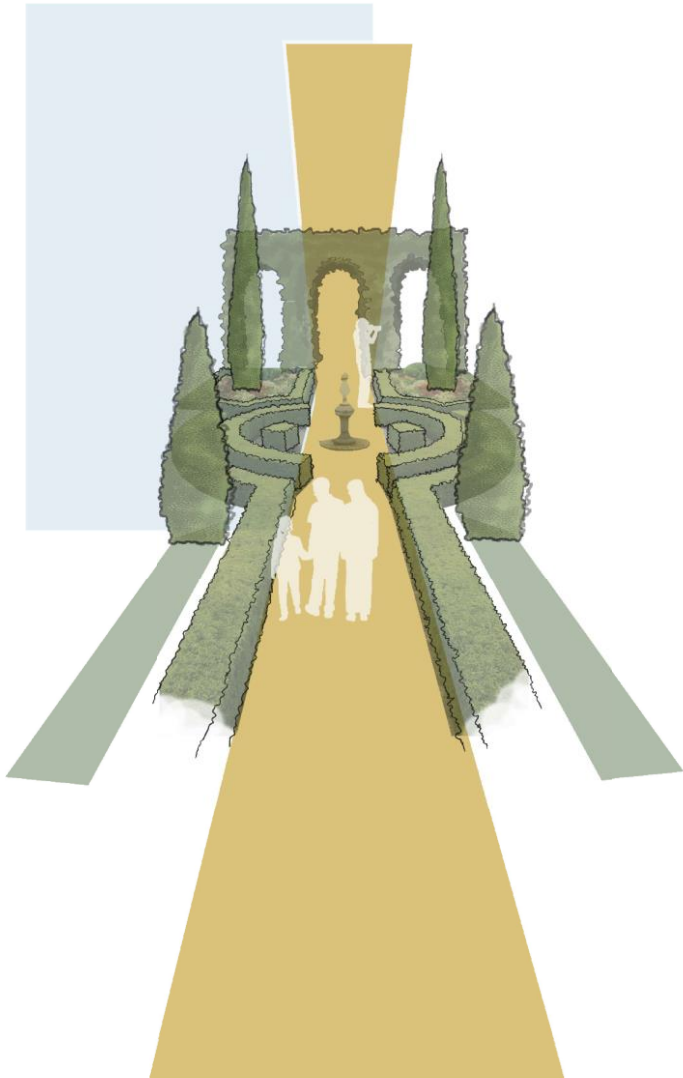
A conceptual design layout for incorporating La Rambla's style into a landscape concept by having a Central Promenade, wide pedestrian pathway as the centerpiece Flanked by rows of trees for shade and symmetry. Include public art installations such as sculptures or columns artworks to Integrate performance areas for street artists or musicians.



**BETA**<sup>TM</sup>  
DEVELOPMENTS

**ÖKOPLAN**  
LANDSCAPING  
*Frank Seibert*





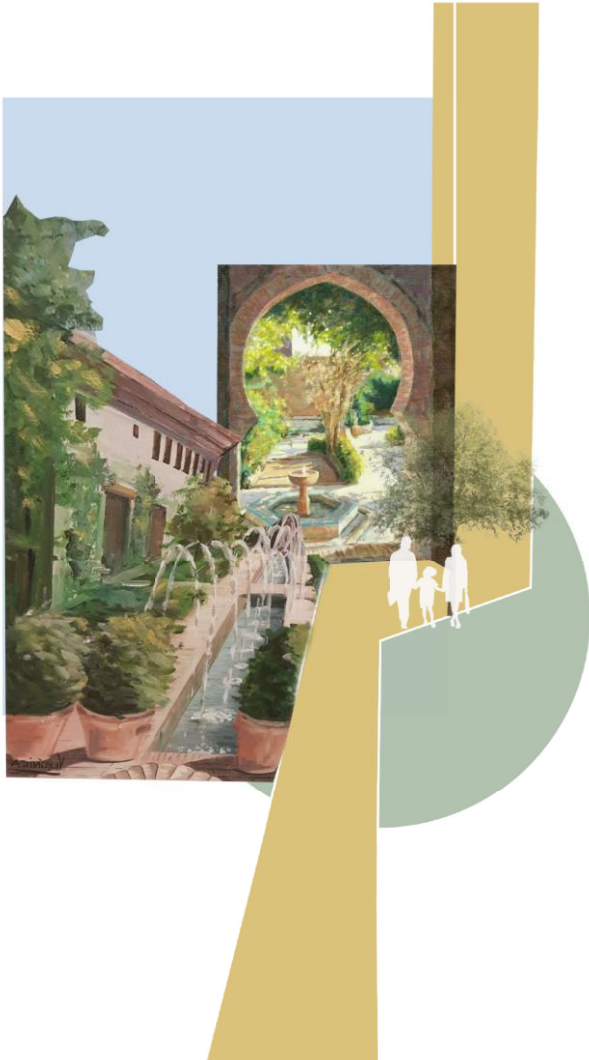
# PIAZZA ITALIA ZONE

Designing a piazza in an Italian landscape concept involves blending traditional elements of Italian architecture with natural features and modern functionality blend natural beauty and architectural elegance.

## CONCEPTUAL DESIGN SKETCH PIAZZA ITALIA ZONE

This zone is an open space framed by water feature elements, sculptures, and arcades, providing both functionality and aesthetic appeal.





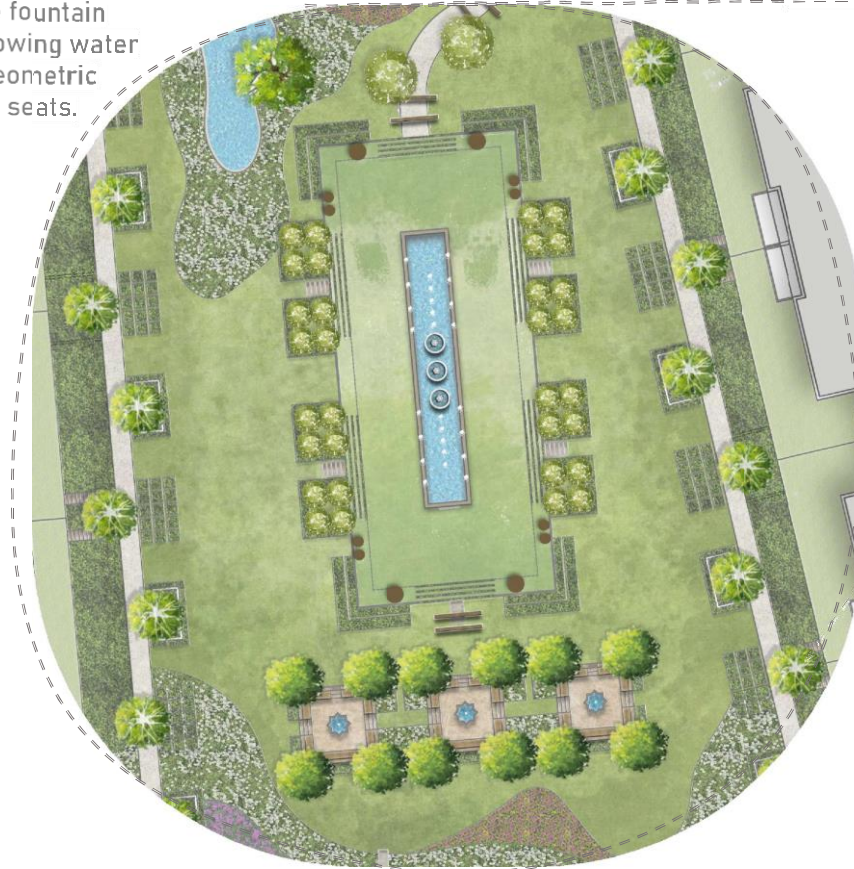
# ANDALUSIAN DREAMS ZONE

Creating an Andalusian Dreams zone in a landscape layout draws inspiration from the rich cultural and natural elements of Andalusia, Spain. The design emphasizes Moorish architecture, vibrant colors, water features, and lush greenery, creating an enchanting and tranquil ambiance

# CONCEPTUAL DESIGN SKETCH

## ANDALUSIAN DREAMS ZONE

This zone contains tiered Moorish-style fountain with intricate tilework (azulejos) and flowing water to evoke tranquility. Surrounded by a geometric formed shrubs , water pots and sunken seats.







## GRECIAN RETREAT ZONE

A Grecian Retreat in landscape design captures the timeless elegance and serenity of ancient Greece. It combines classical architecture, Mediterranean flora, and serene spaces for relaxation, evoking a harmonious blend of nature and history.

# CONCEPTUAL DESIGN SKETCH

## GRECIAN RETREAT ZONE

Adding a Reflecting Pool lined with white marble, mirroring the clean lines of Greek architecture. With A central tiered water cascade, inspired by ancient designs, with flowing water for ambiance



**BETA**<sup>TM</sup>  
DEVELOPMENTS

**ÖKOPLAN**  
LANDSCAPING  
*Frank Seibert*

# CONCEPTUAL DESIGN SKETCH

## GRECIAN RETREAT GARDEN ZONES

- Club House
- Shaded Seating area
- Bougainvillea Garden
- Lemon Garden Orange
- Graden
- Olive Garden



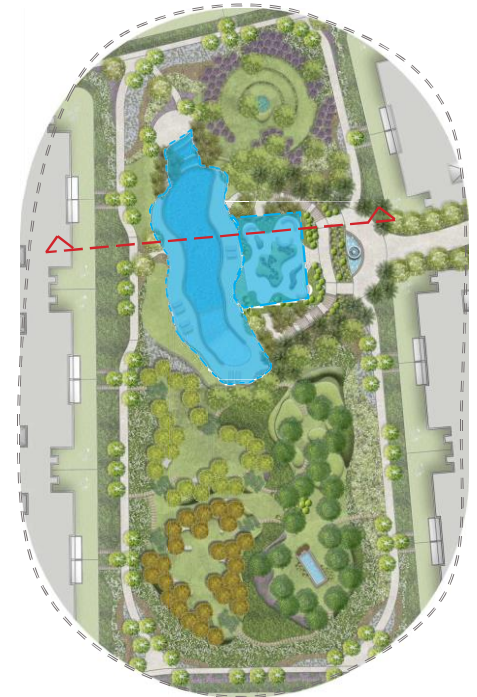
**BETA**<sup>TM</sup>  
DEVELOPMENTS

**ÖKOPLAN**  
LANDSCAPING  
*Frank Seibert*



# GRECIAN RETREAT GARDEN

## CLUB HOUSE CROSS SECTION



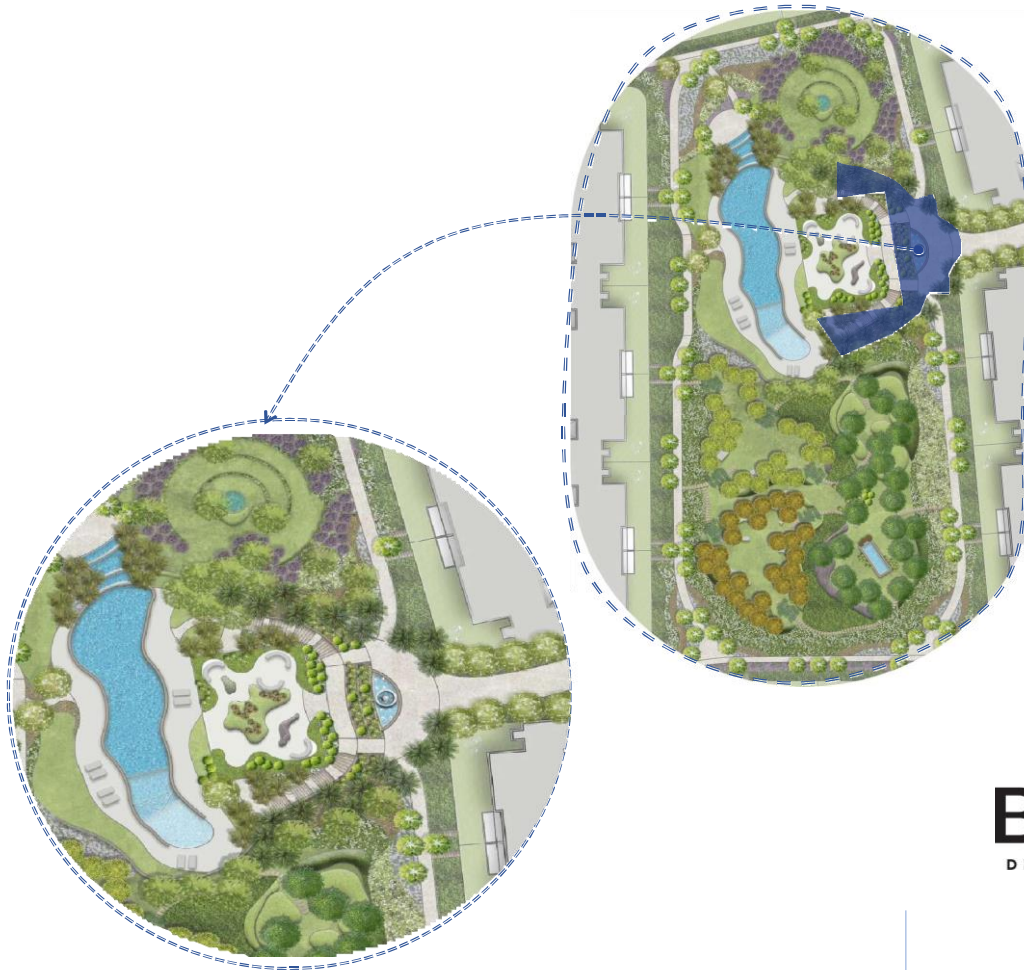
# GRECIAN RETREAT GARDEN

## CLUB HOUSE POOL



# GRECIAN RETREAT GARDEN

## CLUB HOUSE ENTRANCE





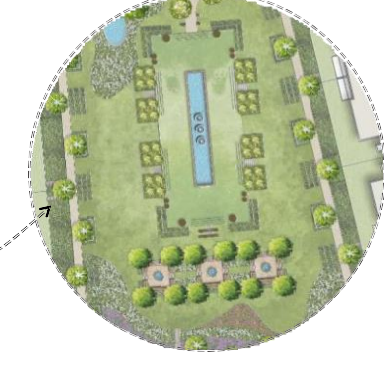
# GRECIAN RETREAT GARDEN

## BOUGAINVILLEA GARDEN



# BETA

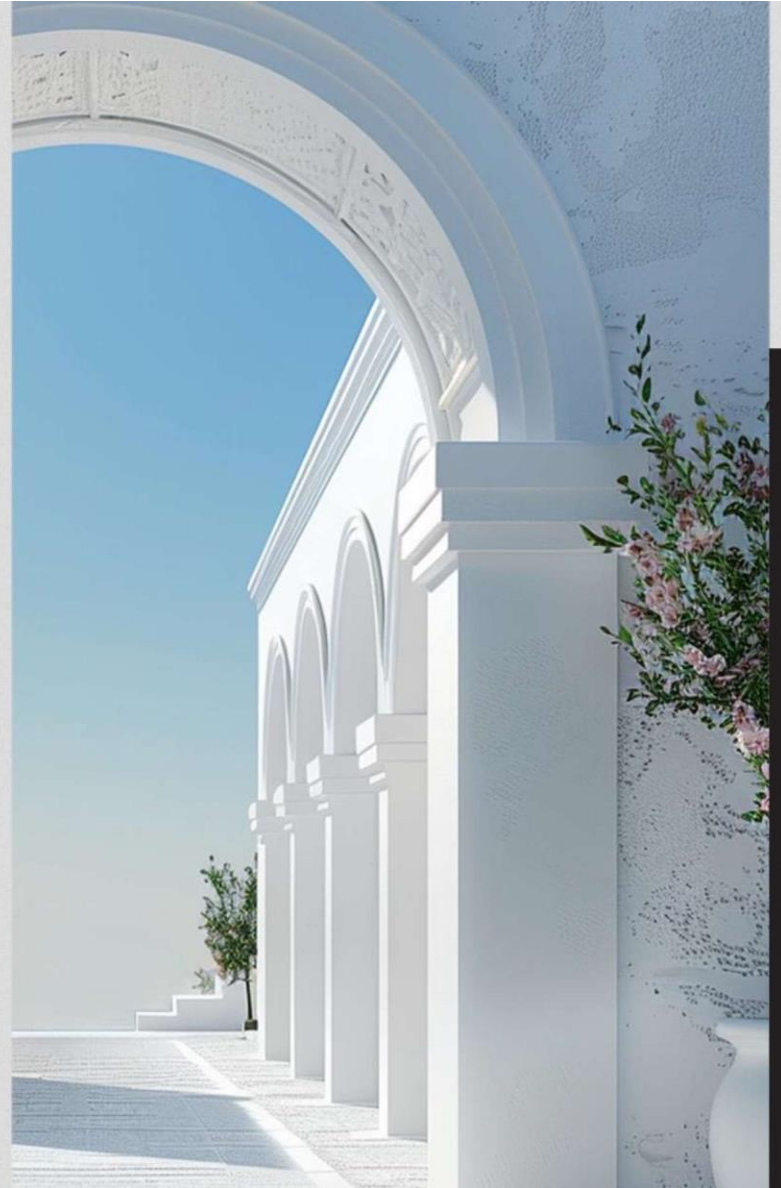
"Mediterranean gardens: a timeless embrace of nature's beauty, uniting the world with their vibrant colors, fragrant blooms, and serene charm."





**BETA**<sup>TM</sup>  
*Residence*  
OCTOBER

**ARCHITECTURE**  
CONCEPT DESIGN



Three chapters to discover, One story to write

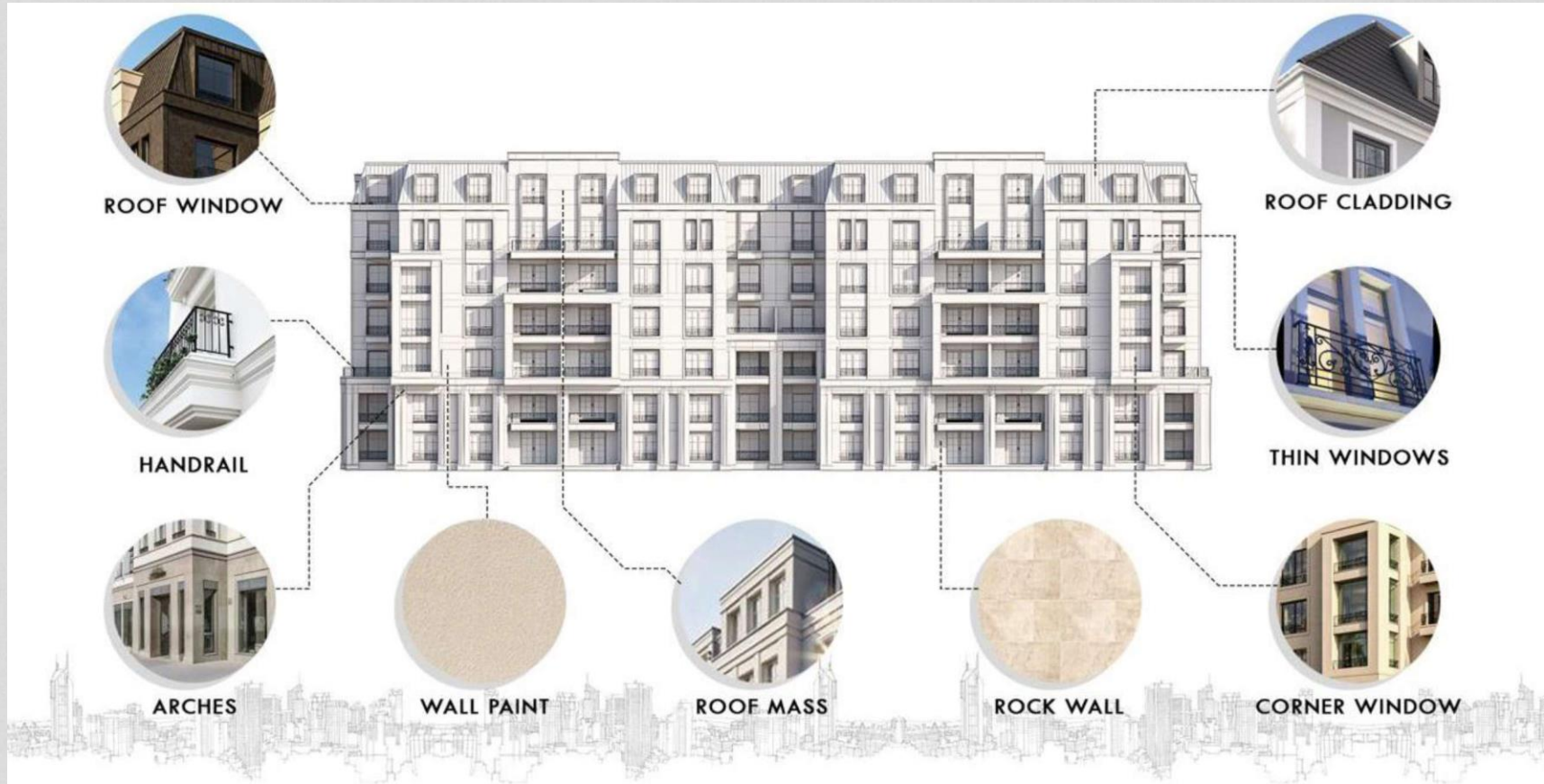


BETA<sup>™</sup>  
Residence  
OCTOBER

# MASTER PLAN









BETA<sup>TM</sup>  
Residence  
OCTOBER

# قصة جيدة

VOL.11

By BETA<sup>TM</sup>  
DEVELOPMENTS  
SINCE 1993





BETA<sup>TM</sup>  
Residence  
OCTOBER

# قصة جديدة

VOL.11

By BETA<sup>TM</sup>  
DEVELOPMENTS  
SINCE 1993





BETA<sup>TM</sup>  
Residence  
OCTOBER

# قصة جديدة

VOL.11

By BETA<sup>TM</sup>  
DEVELOPMENTS  
SINCE 1993



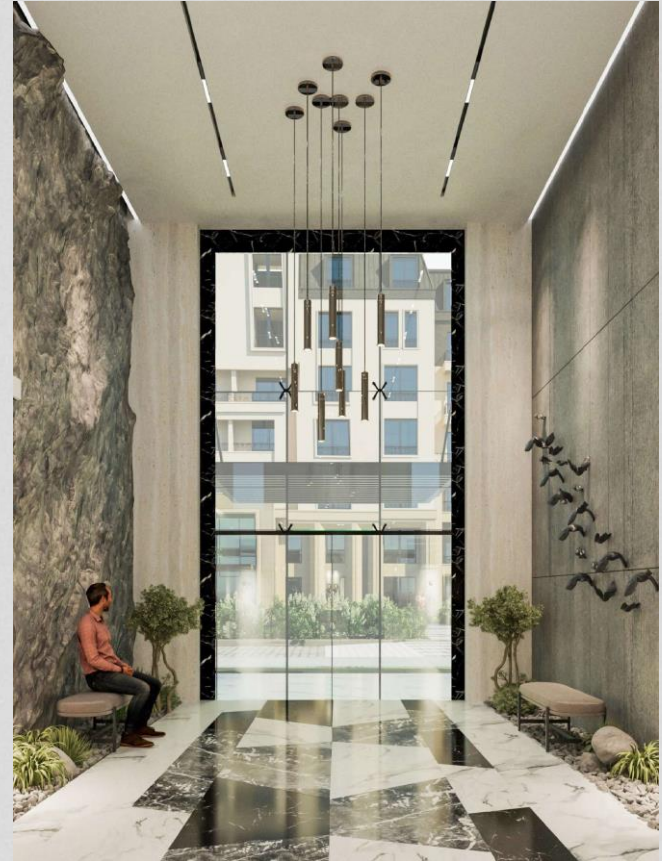


BETA<sup>TM</sup>  
Residence  
OCTOBER

# قصة جديدة

VOL.11

By BETA<sup>TM</sup>  
DEVELOPMENTS  
SINCE 1993





قصة جديدة

Three chapters to discover, One Story to write

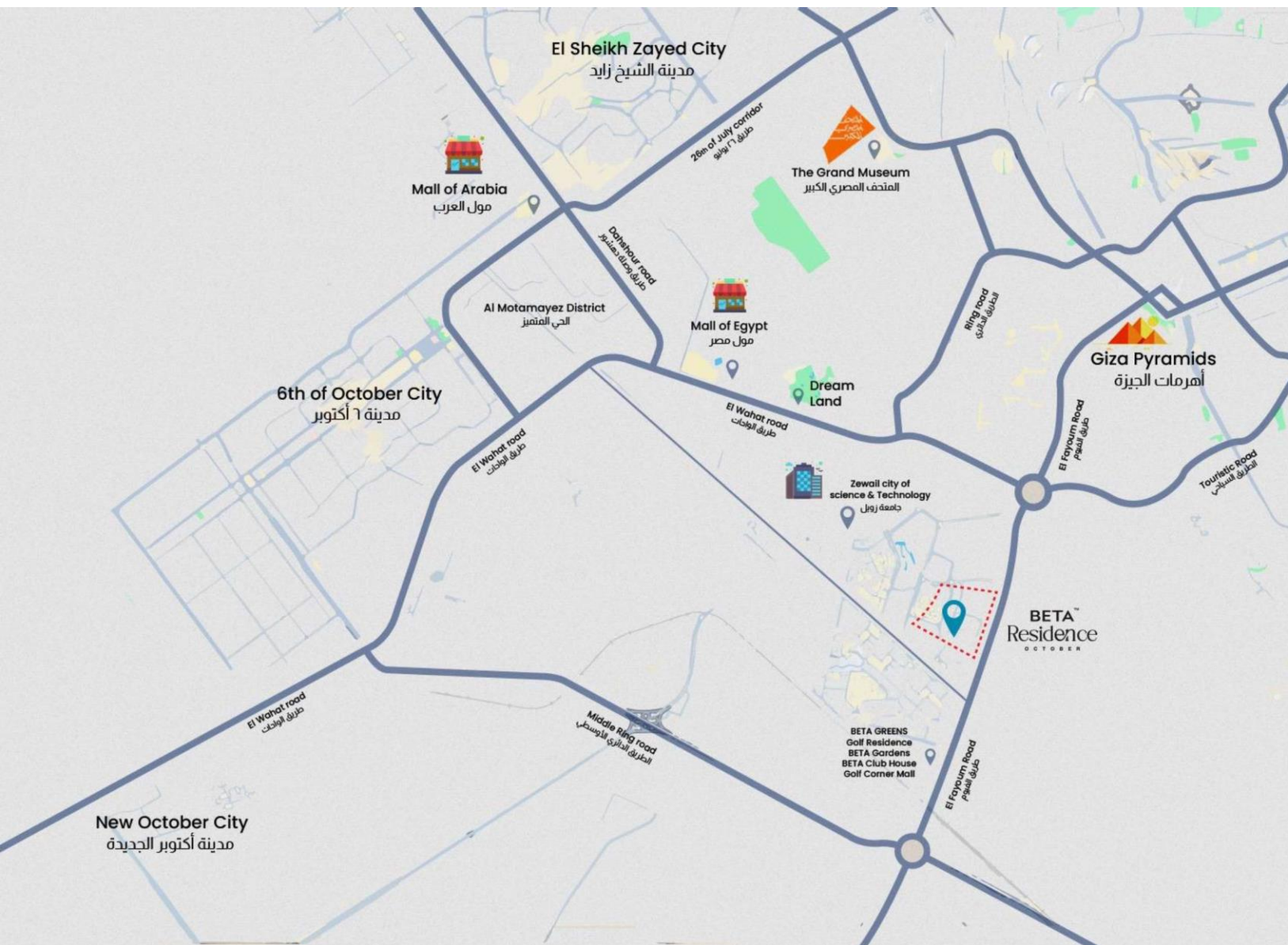
# BETA<sup>TM</sup> Residence

O C T O B E R

*Project Overview*

BETA<sup>TM</sup>  
Residence  
O C T O B E R

By BETA<sup>TM</sup>  
DEVELOPMENTS  
SINCE 1993





BETA™  
Residence  
OCTOBER

## MASTER PLAN

20 Acers





— A facility that perfectly captures your story —



**Open spaces  
and greenery**



**Pedestrian  
walkways**



**Communal zones  
with unique  
water features**



**Kids  
area**



**Swimming  
pool**



**Gym**



**Club  
house**



**Luxurious double  
height entrances**



**2 Elevators  
Per building**



**Underground  
Parking with  
storage facilities**



**Smart  
gates**



**Security  
24/7**



**Facility  
Management**



**Commercial  
buildings**



**Ev. charging**



## ***Types Of Residential Modules B1 / B2***

### ***Two Bedrooms***

*Areas starts from  
115m to 125m*

### ***Three Bedrooms***

*Areas starts from  
140m to 175m*

## ***Residential Building G +6 Floors***

### ***Launch inventory***

Ground Floor Apartments  
Typical Floor





## ***Launch Payment Plans***

### ***Option 1***

#### ***6 years***

5% Down payment  
5% after 1 year  
6 years equal installments

### ***Option 3***

#### ***8 years***

15% Down payment  
10% after 1 year  
8 years equal installments

### ***Option 2***

#### ***7 years***

10% Down payment  
10% after 1 year  
7 years equal installments

***Maintenance 8%***

***Start Price : From 5 million***





# ***EOI's***

## ***Expression of Interest (EOI)***

50,000 EGP Refundable cheques  
International transfers allowed



BETA™  
Residence  
OCTOBER

& NOW  
OUR **New  
Story**

*Thank You.....*



By **BETA™**  
DEVELOPMENTS  
SINCE 1993

Three chapters to discover, One Story to write