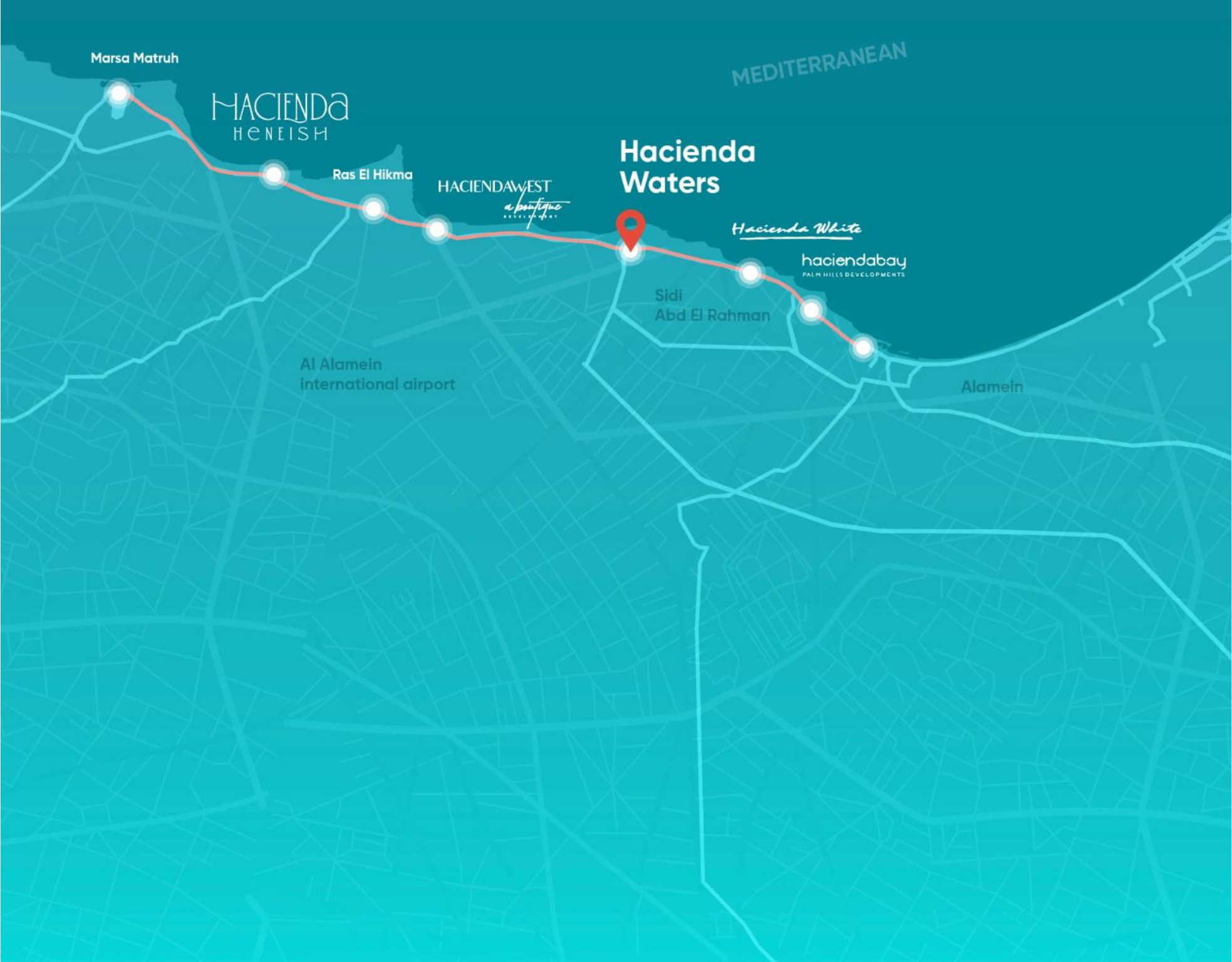


# HACIENDA WATERS



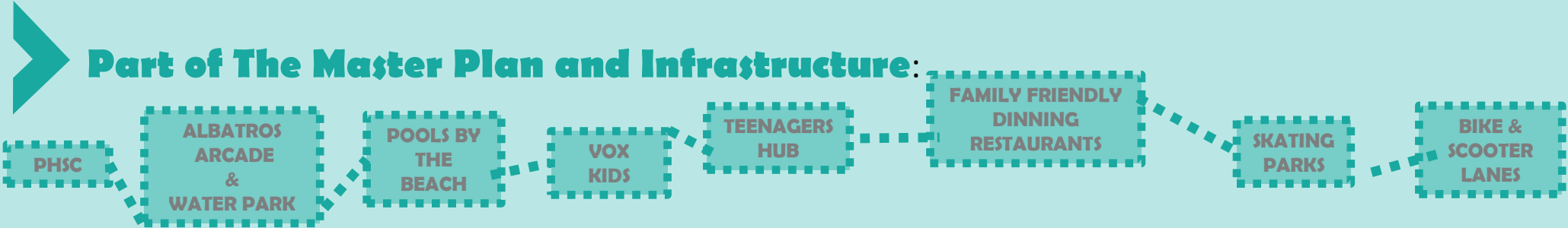
# HACIENDA WATERS

20 KILOS BEFORE HACIENDA WEST  
30 KILOS FROM RAS EL HEKMA





**We Have It All!** The first family friendly development catered to the whole family encompassing activities for kids, teenagers and adults.



**VOX KIDS**



**BIKE LANES**



**GO KARTING**



**POOLS BY THE BEACH**



**TEENAGERS HUB**



**SKATING PARKS**



**ARCADES** where the colorful lighting along side the diverse set of games offers an unforgettable experience families & kids. **PARTNER UP** with **ALBATROS**

Complementing the experience with the **BIGGEST WATER PARK**

**ALBATROS WATER PARK**



**ALBATROS ARCADE**





**PALM HILLS CLUB** For the first time ever, is coming to the North Coast. You no longer must pause your kids training during Summer season. PHSC is coming with all what it has to offer in terms of facilities and amenities



**OVERVIEW**



**PALM HILLS CLUB** For the first time ever, is coming to the North Coast. You no longer must pause your kids training during Summer season. PHSC is coming with all what it has to offer in terms of facilities and amenities



**FOOD MARKET**

**LITTLE PALMS**





**PALM HILLS CLUB** For the first time ever, is coming to the North Coast. You no longer must pause your kids training during Summer season. PHSC is coming with all what it has to offer in terms of facilities and amenities



**BE FIT**



**KICKBOXING**



**PADDLE**



**GYMNASTICS**



**WATER BALLET**



**WATER POLO**





**We Have It All!** The first family friendly development catered to the whole family encompassing activities for kids, teenagers and adults.



**ADD ON\$**

WALKWAYS

JUNGLE GYM

INTERACTIVE KIDS PLAY AREA

STROLLER PARKING & PATHWAYS

BASINETS BY THE BEACH

BATHROOM CHANGING TABLES

TRAMPOLINE

**LITTLE PALM NURSERY**



**OUTDOOR ADVENTURE ZONE**



**INTERACTIVE KIDS' AREA**

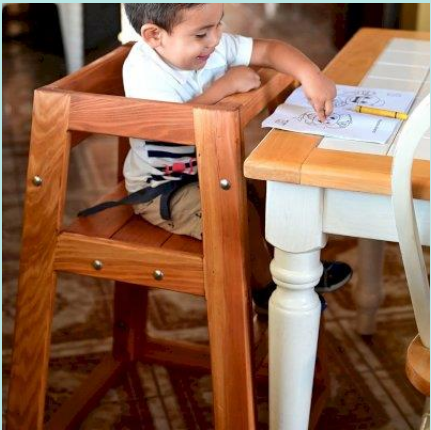


**TRAMPOLINE**



**SOMETHING FOR EVERYONE**

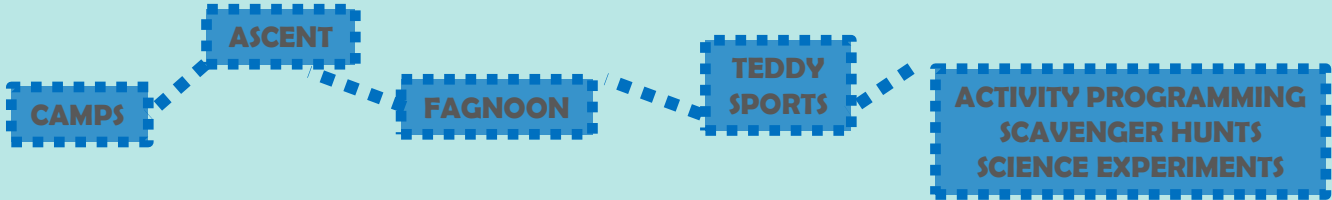
**FAMILY AMENITIES BY THE BEACH**





**We Have It All!** The first family friendly development catered to the whole family encompassing activities for kids, teenagers and adults.

**POP UPS**



**ACTIVITY PROGRAMMING**



**TEDDY SPORTS**



**ASCENT**

**SOMETHING FOR EVERYONE**

**KIDS WORKSHOPS BY THE BEACH**





**HACIENDA WATERS**

**LOOK  
& FEEL**

**MINIMALISM MEETS ELEGANCE**





**ARCHITECTURE LOOK  
& FEEL      VILLAS**





**ARCHITECTURE LOOK  
& FEEL      CHALET\$**





**ARCHITECTURE LOOK  
& FEEL      CONDOS**





# PIEDS DANS L'EAU

## TURN- KEY





# HACIENDA WATERS MASTER PLAN

AREA: 161.7 FDS:  
Lagoons: 18 FDS  
Footprint : 12.5%  
Landscape & Hardscape: 40.5%  
Commercial & Recreational: 15%  
Product Mix:












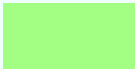
PDL 2 Bed;	Villas & Town Houses;	Condos 1,2 & 3 Bed;
Cabins 1 &2 Bed;	Senior & Junior Chalet;	G+1 & G+5





# KEY DISTRIBUTION MASTER PLAN

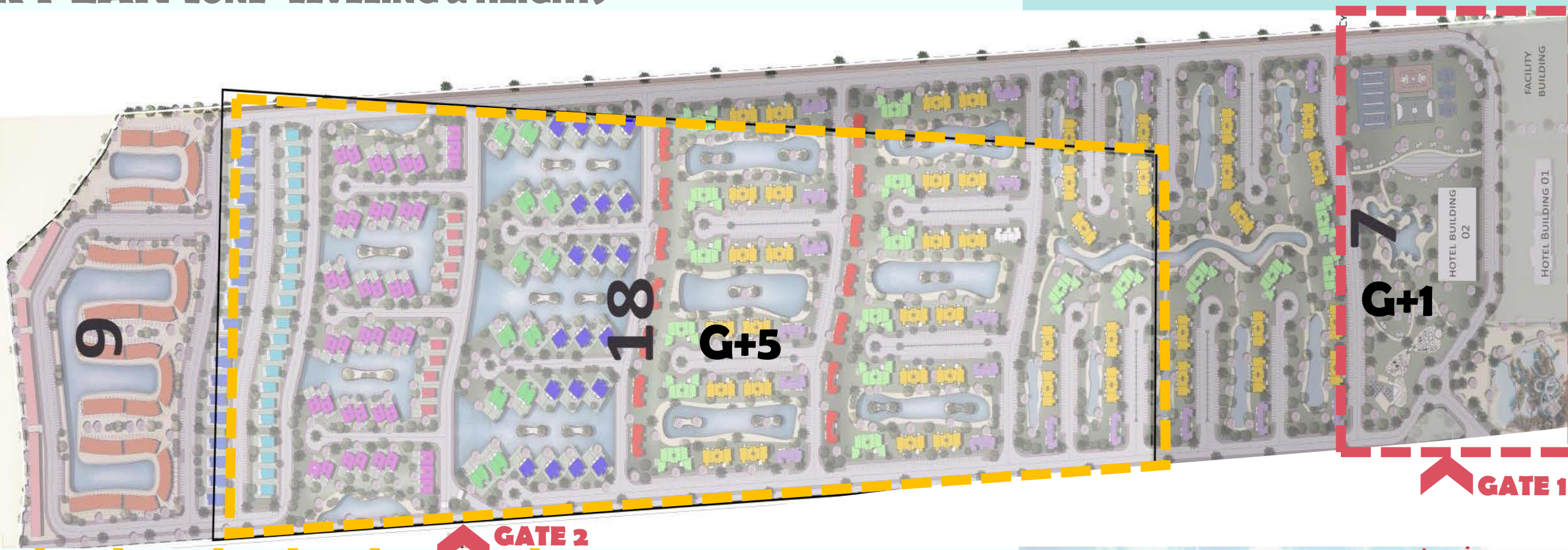


- |   |                           |   |                     |   |               |
|---|---------------------------|---|---------------------|---|---------------|
|  | Pieds Dans L'Eau          |  | Water Town House    |  | Water Condo 1 |
|  | Lagoon Cabins             |  | Water Villa         |  | Water Condo 2 |
|  | 1 <sup>st</sup> Row Villa |  | Water Senior Chalet |  | Water Condo 3 |
|  | 2 <sup>nd</sup> Row Villa |  | Water Junior Chalet |  | Water Condo 4 |

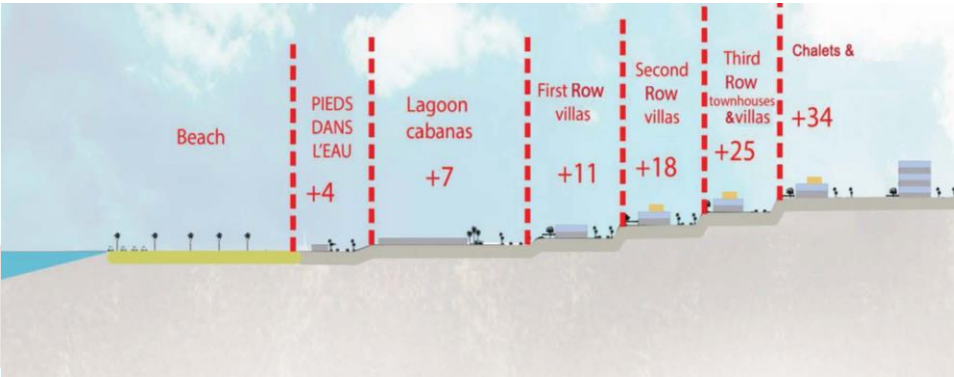


# MASTER PLAN ZONE- LEVELING & HEIGHTS

COMMERCIAL – RECREATIONAL & HOTELS



PDL	CABINS	1 <sup>ST</sup> ROW	2 <sup>ND</sup> ROW	VILLAS & TOWNS	CHALETs
+4	+7	+11	+18	+25	+34 SLOPPED





# HACIENDA WATERS

# VILLAS & TOWN H.

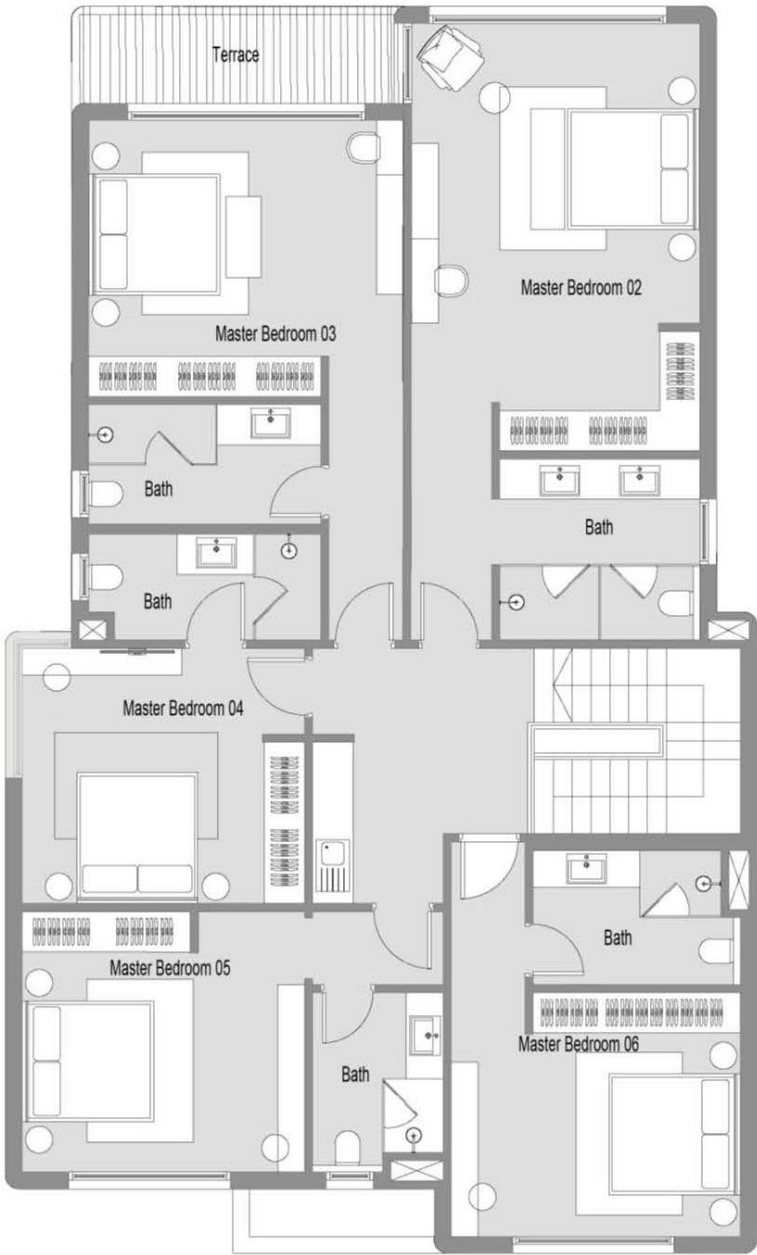




1<sup>ST</sup> ROW  
VILLA



GROUND FLOOR



FIRST FLOOR

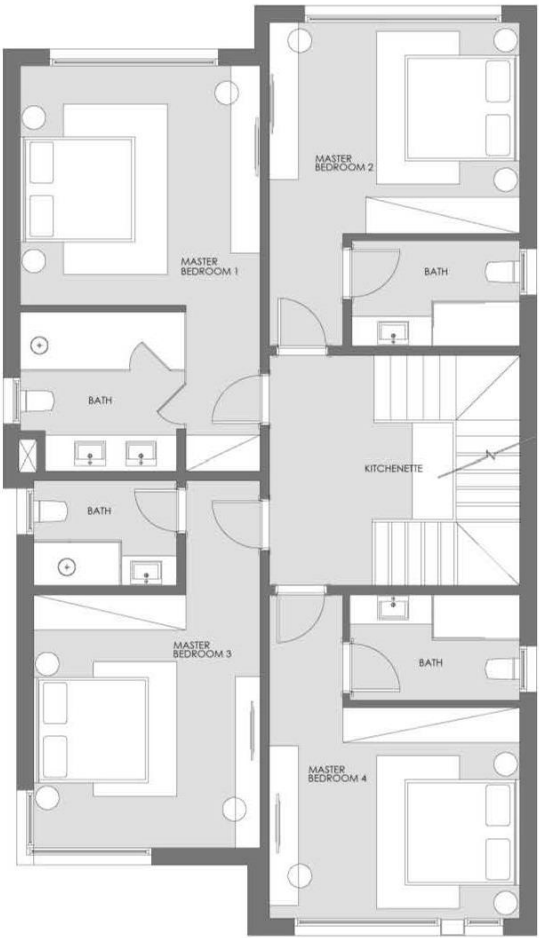
AVG. LAND AREA	550 m <sup>2</sup>
AVG. BUA (Ground +1st)	374 m <sup>2</sup>
SPECS	6 MASTER BEDS NANNY DRIVER



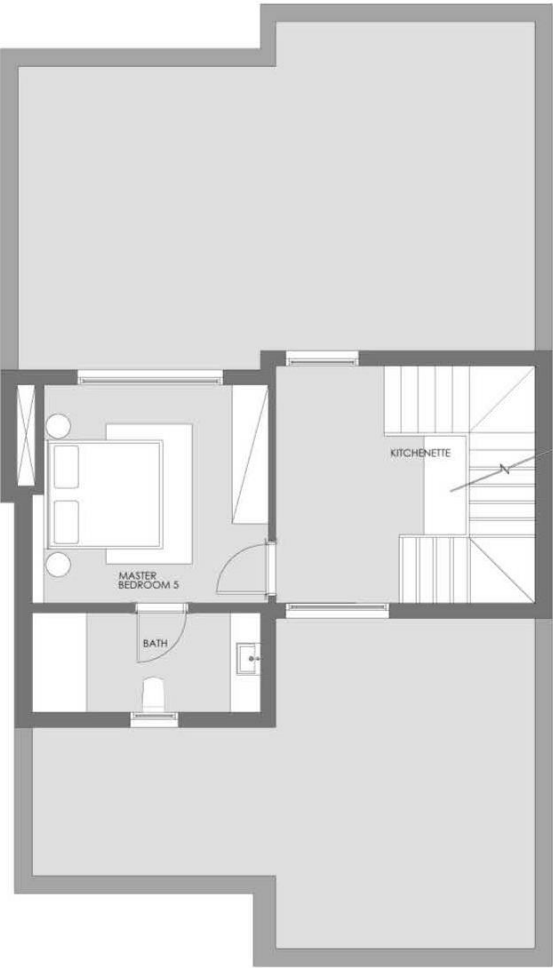
2<sup>nd</sup> ROW  
VILLA



GROUND FLOOR



FIRST FLOOR



PENTHOUSE FLOOR

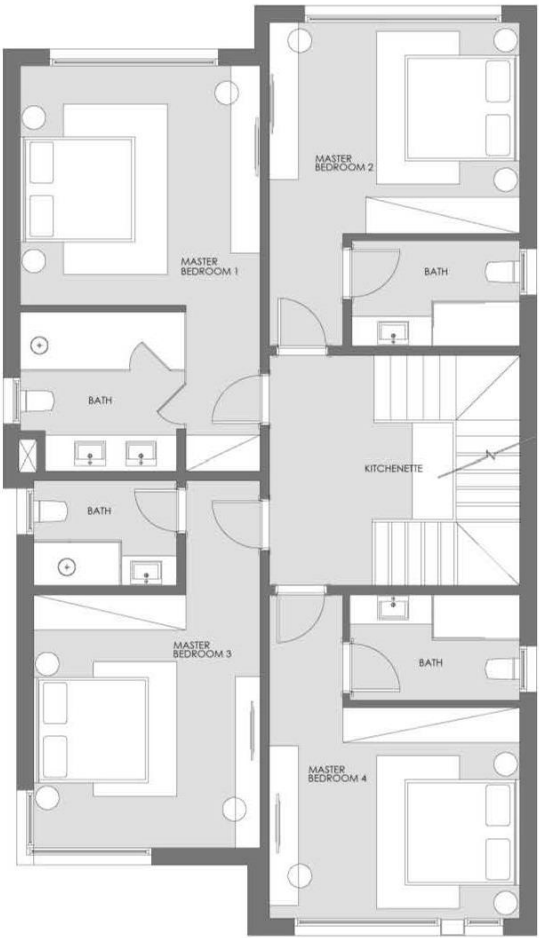
AVG. LAND AREA	420 m <sup>2</sup>
AVG. BUA (Ground +1st)	278 m <sup>2</sup>
AVG. PENTHOUSE AREA	46 m <sup>2</sup>
AVG. ROOF AREA	88.5 m <sup>2</sup>
SPECS	5 MASTER BEDS NANNY DRIVER



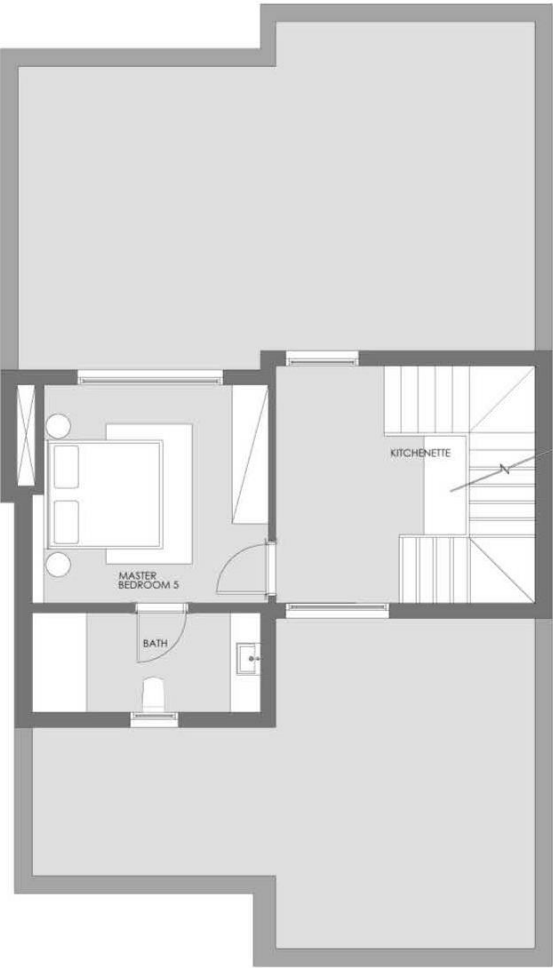
# WATER VILLA



GROUND FLOOR



FIRST FLOOR



PENTHOUSE FLOOR

AVG. LAND AREA	420 m <sup>2</sup>
AVG. BUA (Ground +1st)	278 m <sup>2</sup>
AVG. PENTHOUSE AREA	46 m <sup>2</sup>
AVG. ROOF AREA	88.5 m <sup>2</sup>
SPECS	5 MASTER BEDS NANNY DRIVER



# WATER TOWN HOUSE



GROUND FLOOR



FIRST FLOOR



PENTHOUSE FLOOR

	CORNER	MIDDLE
AVG. LAND AREA	190 m <sup>2</sup>	187 m <sup>2</sup>
AVG. BUA (Ground +1st)	198m <sup>2</sup>	196 m <sup>2</sup>
AVG. PENTHOUSE AREA	38 m <sup>2</sup>	38 m <sup>2</sup>
AVG. ROOF AREA	57 m <sup>2</sup>	55 m <sup>2</sup>
SPECS	4BEDS (3 MASTER) NANNY	



**HACIENDA WATERS**

# WATER CHALETs

**SENIOR & JUNIOR**

**DIRECT DECKS ON LAGOONS**

**SEA VIEW FROM PENTHOUSE FLOOR**

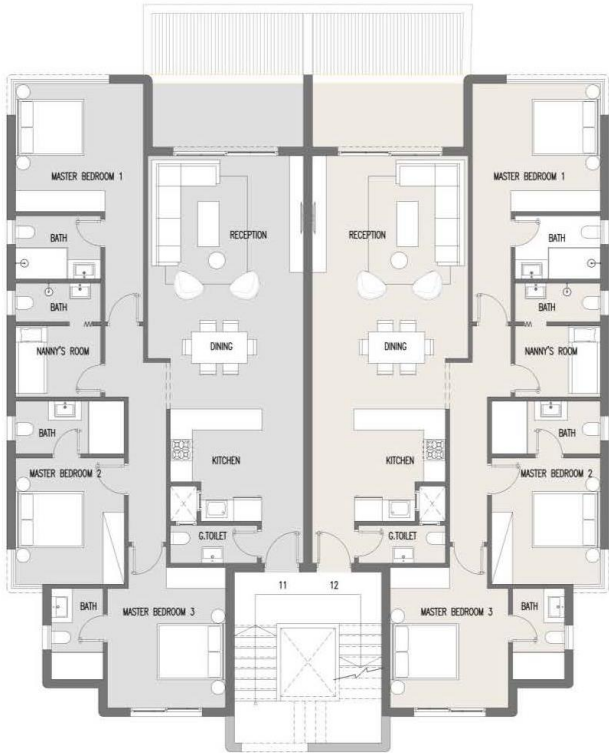




# WATER SENIOR CHALET



GROUND FLOOR



FIRST FLOOR



PENTHOUSE FLOOR

## GROUND UNIT

AVG. LAND AREA	250 m <sup>2</sup>
AVG. BUA - Ground	164 m <sup>2</sup>
SPECS	4BEDS (2 MASTER) NANNY

## 1<sup>ST</sup> & PENT UNIT

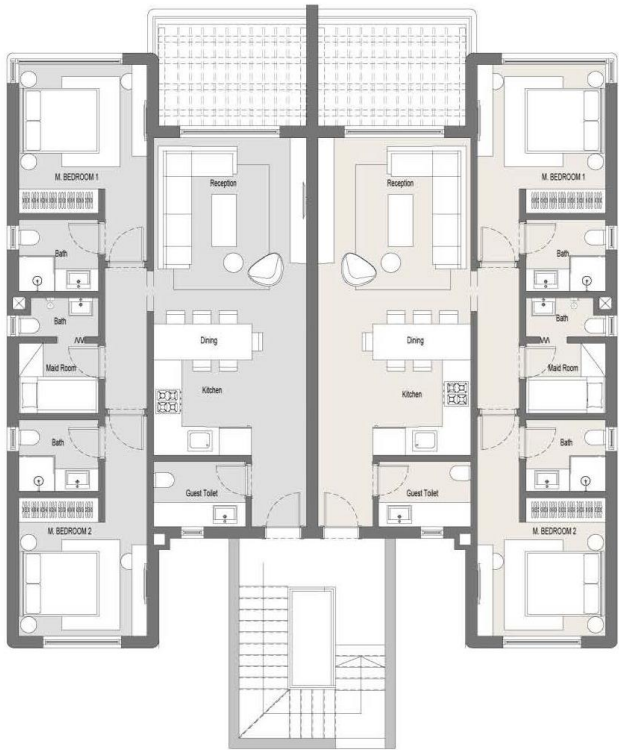
AVG. BUA -1 <sup>st</sup>	154.5 m <sup>2</sup>
AVG. PENTHOUSE AREA	41 m <sup>2</sup>
AVG. ROOF AREA	104.5 m <sup>2</sup>
SPECS	4BEDS (3 MASTER) NANNY



# WATER JUNIOR CHALET



GROUND FLOOR



FIRST FLOOR



PENTHOUSE FLOOR

## GROUND UNIT

AVG. LAND AREA	230 m <sup>2</sup>
AVG. BUA - Ground	116 m <sup>2</sup>
SPECS	3 BEDS (1 MASTER)

## 1<sup>ST</sup> & PENT UNIT

AVG. BUA -1 <sup>st</sup>	114.5 m <sup>2</sup>
AVG. PENTHOUSE AREA	38 m <sup>2</sup>
AVG. ROOF AREA	65.5 m <sup>2</sup>
SPECS	3 BEDS (2MASTER) NANNY



**HACIENDA WATERS**

# WATER CONDOS

**VIEWING CONTINUOUS LAGOONS & SEA  
HORIZON**

**NEXT DOOR TO HOTEL- FAMILY  
FRIENDLY DINNING RESTAURANTS &  
WATER PARK**

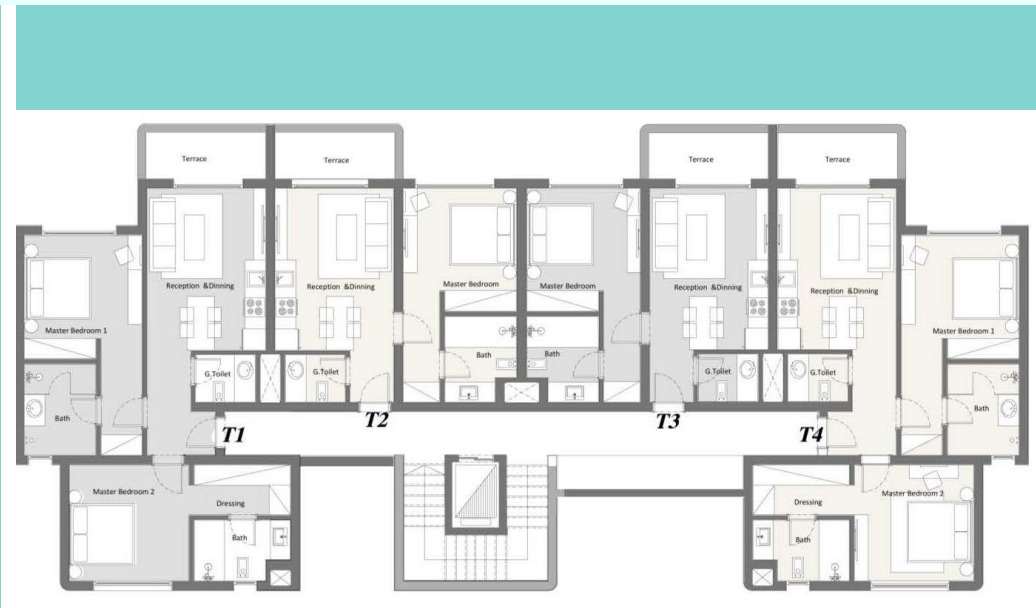




# WATER CONDO 1



GROUND FLOOR



TYPICAL FLOOR



PENTHOUSE FLOOR

## INDICATIONAL SECTION

G+1

1st	2 Bed	1 Bed	1 Bed	2 Bed
Ground	2 Bed	2 Bed		2 Bed

G+5

Penthouse	2 Bed	1 Bed	1 Bed	2 Bed
4th	2 Bed	1 Bed	1 Bed	2 Bed
3rd	2 Bed	1 Bed	1 Bed	2 Bed
2nd	2 Bed	1 Bed	1 Bed	2 Bed
1st	2 Bed	1 Bed	1 Bed	2 Bed
Ground	2 Bed	2 Bed		2 Bed

## PRODUCT MIX

Ground	1 Bed: 55-60 M <sup>2</sup> 2 Beds: 80-100 M <sup>2</sup>
Typical	
Penthouse	



# WATER CONDO 2



GROUND FLOOR



TYPICAL FLOOR



PENTHOUSE FLOOR

## INDICATIONAL SECTION

G+1

1st	3 Bed	2 Bed	2 Bed	3 Bed
Ground	3 Bed	2 Bed	2 Bed	3 Bed

G+5

Penthouse	3 Bed	2 Bed	2 Bed	3 Bed
4th	3 Bed	2 Bed	2 Bed	3 Bed
3rd	3 Bed	2 Bed	2 Bed	3 Bed
2nd	3 Bed	2 Bed	2 Bed	3 Bed
1st	3 Bed	2 Bed	2 Bed	3 Bed
Ground	3 Bed	2 Bed	2 Bed	3 Bed

## PRODUCT MIX

Ground	2 Beds: 91-105 M <sup>2</sup> 3 Beds: 122.5-146.5 M <sup>2</sup>
Typical	
Penthouse	



# WATER CONDO 3



GROUND FLOOR



TYPICAL FLOOR



PENTHOUSE FLOOR

## INDICATIONAL SECTION

G+1

First	2 Bed	1 Bed	1 Bed	2 Bed
Ground	2 Bed	1 Bed	1 Bed	2 Bed

G+5

Penthouse	2 Bed	1 Bed	1 Bed	2 Bed
4th	2 Bed	1 Bed	1 Bed	2 Bed
3rd	2 Bed	1 Bed	1 Bed	2 Bed
2nd	2 Bed	1 Bed	1 Bed	2 Bed
1st	2 Bed	1 Bed	1 Bed	2 Bed
Ground	2 Bed	1 Bed	1 Bed	2 Bed

## PRODUCT MIX

Ground	1 Bed: 64- 64.5 M <sup>2</sup> 2 Beds: 100-101 M <sup>2</sup>
Typical	
Penthouse	



# WATER CONDO 4



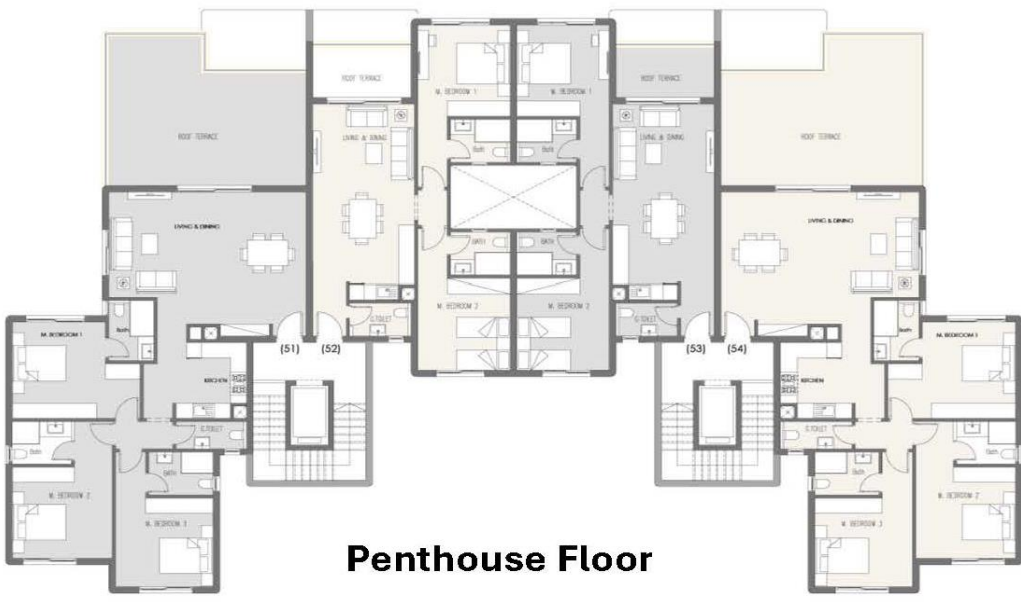
Ground Floor

GROUND FLOOR



Typical Floor

TYPICAL FLOOR



Penthouse Floor

PENTHOUSE FLOOR

## INDICATIONAL SECTION

G+1

First	3 Bed		2 Bed	2 Bed	3 Bed	
Ground	2 Bed	2 Bed	2 Bed	2 Bed	2 Bed	2 Bed

G+5

Penthouse	3 Bed		2 Bed	2 Bed	3 Bed	
4th	2 Bed	2 Bed	2 Bed	2 Bed	2 Bed	2 Bed
3rd	2 Bed	2 Bed	2 Bed	2 Bed	2 Bed	2 Bed
2nd	2 Bed	2 Bed	2 Bed	2 Bed	2 Bed	2 Bed
1st	2 Bed	2 Bed	2 Bed	2 Bed	2 Bed	2 Bed
Ground	2 Bed	2 Bed	2 Bed	2 Bed	2 Bed	2 Bed

## PRODUCT MIX

Ground	2 Beds: 93- 109 M <sup>2</sup> 3 Beds: 145-147 M <sup>2</sup>
Typical	
Penthouse	



# HACIENDA WATERS

## PRODUCT BRIEF

Category	Sub CAT	AVG.BUA /SQM	AVG. PENT /SQM	AVG. Roof Terrace/SQM	Av. Land/Garden Area/M2	Total NO of Beds	Bedroom Specs		Living	Nanny	Driver	Finishing Specs			
							MB	B				FF	Furniture	Ac's	Kit Cab
Pied Dans L'eau	2 BedS	90			55	2	2		✓			✓	✓	✓	✓
Cabins	1 Bed	42				1		1	✓			✓			
	2 BedS	84				2	2		✓			✓			
Villa First Row		374			550	6	6			✓	✓	✓			
Villa Second Row		278	46	88.5	420	5	5			✓	✓	✓			
Villa Lagoon View		278	46	88.5	420	5	5			✓	✓	✓			
Townhouse 1&2	Corner	198	38	57	190	4	3	1		✓		✓			
	Middle	196	38	55	187	4	3	1		✓		✓			
Senior Chalet	Ground	164			250	4	2	2		✓		✓			
	First	154.5	41	104.5		4	3	1		✓		✓			
Junior Chalet	Ground	116			230	3	1	2				✓			
	First	114.5	38	65.5		3	2	1		✓		✓			
Lagoon Condo 1 G+1/G+5	Ground	1 Bed: 55-60 2 Bed: 80-100										✓			
	Typical											✓			
	Penthouse												✓		
Lagoon Condo 2 G+1/G+5	Ground	2 Bed: 91-105 3 Bed: 122.5-146.5										✓			
	Typical											✓			
	Penthouse												✓		
Lagoon Condo 3 G+1/G+5	Ground	1 Bed: 64-64.5 2 Bed: 100-101										✓			
	Typical											✓			
	Penthouse												✓		
Lagoon Condo 4 G+1/G+5	Ground	2 Bed: 93-109 3 Bed: 145-147										✓			
	Typical											✓			
	Penthouse												✓		



