

ZG ZONES OF GROWTH[®]
DEVELOPMENTS



LIVITY

R E S I D E N C E

Table of Contents

01

About LIVITY

02

Vision

03

Introducing LIVITY Residence

04

Master Plan

05

Why Choose LIVITY

06

The Destination

07

Facilities & Amenities

08

Unit Types

09

Key Facts

10

Contact

ABOUT LIVITY

A Place Where Life Feels Balanced

LIVITY Residence is a boutique residential community created for those who value calm living, privacy, and everyday comfort.

Nestled in Hood 6, New Zayed, LIVITY offers a carefully designed neighbourhood where modern architecture meets greenery, water, and a peaceful sense of belonging.

Every corner has been thoughtfully planned to feel warm, welcoming, and effortlessly elegant.

A place where life naturally slows down and every day feels more balanced.

*More than just a home, LIVITY is a setting for **family moments**, quiet mornings, and memories that grow over time.*

Introducing LIVITY Residence

Our Vision

To create a boutique residential address that brings together privacy, beauty, and everyday ease.

LIVITY is designed to offer a lifestyle that feels intimate and refined, where every home enjoys space, greenery, and a strong sense of community.

LIVITY Residence is more than a compound. It is a boutique community designed around the way life is truly lived — with space to breathe, places to gather, and moments to enjoy.

From landscaped walkways and flowing water features to warm architectural lines and private homes, every detail is meant to create a sense of harmony.

Home feels calm.

Life feels connected.

Every day feels just right.

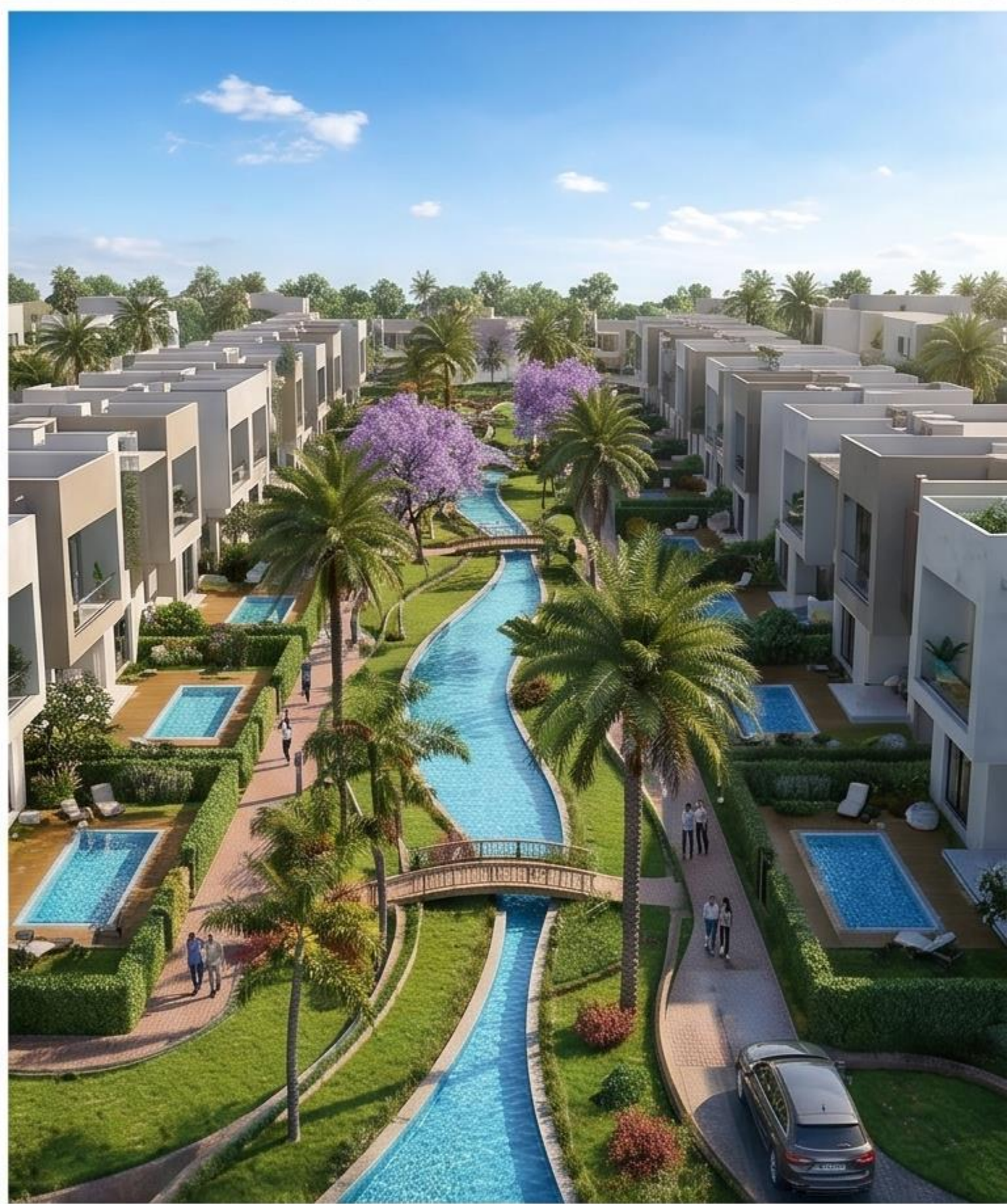


Master Plan

KEY MASTER PLAN









Every Address Feels Intentional

Boutique by Design

The placement of each home has been designed to create a boutique community that feels both intimate and beautifully connected.

Maximised Views & Light

From central green views to corner garden residences, every unit type is positioned to maximise privacy, natural light, and the sense of living within a thoughtfully crafted neighbourhood.

Purposeful Positioning

At LIVITY, every address feels intentional — crafted to offer the finest balance of space, greenery, and community connection.

WHY CHOOSE LIVITY?

A Home That Feels Personal

Choosing LIVITY means choosing a home that feels personal. A boutique compound offers something different from large developments — more privacy, more exclusivity, and a stronger sense of belonging.

At LIVITY, the community is designed to feel intimate and serene, where families can grow in a safe, elegant, and thoughtfully planned environment.



Quiet Mornings



Family Gatherings



Children's Laughter



Evening Walks



Lasting Memories

THE DESTINATION

Perfectly Located in Hood 6, New Zayed

LIVITY Residence offers effortless connectivity to everything that matters — shopping, healthcare, schools, dining, and everyday essentials — while still enjoying the calm of a boutique gated residence.

5 min

SODIC Strip Mall

Retail & dining at your doorstep

7 min

El Nada Hospital

World-class healthcare nearby

8 min

Mall of Arabia

Premier shopping destination

12 min

Sheikh Zayed

Anywhere in the city

LIVITY gives you the perfect balance between accessibility and privacy.

[View on Google Maps →](#)

Every Detail Designed to Enhance Daily Life



24/7 Security & CCTV

A fully secure gated community with round-the-clock monitoring for complete peace of mind.



Landscaped Green Areas

Thoughtfully designed gardens and green pockets that create a refreshing and elegant environment.



Water Features

Beautiful flowing water elements integrated across the community to bring calmness and visual harmony.



Kids' Area

A safe and joyful outdoor space where children can play, explore, and create lasting memories.



Barbeque Area

A dedicated social space for family gatherings, weekend meals, and shared moments with friends.

UNIT TYPES

Homes Designed for the Way You Live

LIVITY Residence offers a curated selection of homes designed to suit different lifestyles and family needs.

Stand Alone Villas

Private homes with generous layouts, spacious gardens, and a strong sense of exclusivity.

Twin-Houses

Modern layouts that combine comfort, elegance, and efficient space planning.

Town-Houses

Thoughtfully designed for a warm neighbourhood feel, combining modern living with a strong sense of community.

Stand Alone Villas

UNIT TYPE

Stand Alone Villas

Private homes with generous layouts, spacious gardens, and a strong sense of exclusivity.

*Perfect for families looking for **maximum privacy** and spacious living — where every corner of the home is yours to enjoy.*

A home that is entirely yours — private, spacious, and surrounded by beauty.

→ **Generous private garden**

→ **Spacious internal layouts**

→ **Maximum exclusivity**

→ **Ideal for large families**



Twin-Houses

UNIT TYPE

Twin-Houses

The perfect balance of privacy and community — designed for families who want it all.

Modern layouts that combine comfort, elegance, and efficient space planning.

*Ideal for growing families who value both **privacy and community** — a home that grows with you.*

- **Modern, efficient layouts**
- **Elegant architectural design**
- **Community connection**
- **Ideal for growing families**





Town-Houses

(Cluster 1)

UNIT TYPE

Town-houses

Thoughtfully designed for a warm neighbourhood feel, combining modern living with a strong sense of community.

Discover our beautifully designed town-houses, offering contemporary living spaces with a warm neighbourhood feeling. These homes are crafted for comfort and practicality across two distinct cluster types.

Ideal for families seeking connection and a vibrant community atmosphere.



**Warm
neighbourhood
feeling**



**Contemporary
living spaces**



**Practical design
for families**



**Strong
community
connection**





Town-Houses

(Cluster 2)







Stand Alone Villas

Floor Plans

UNIT TYPE

Stand Alone Villas: Floor Plans

Private homes with generous layouts, spacious gardens, and complete privacy. Designed for families who value exclusivity, open space, and a stronger sense of independence.

243

Built-up area (m²)

Spacious design for ultimate comfort

4+

Bedrooms

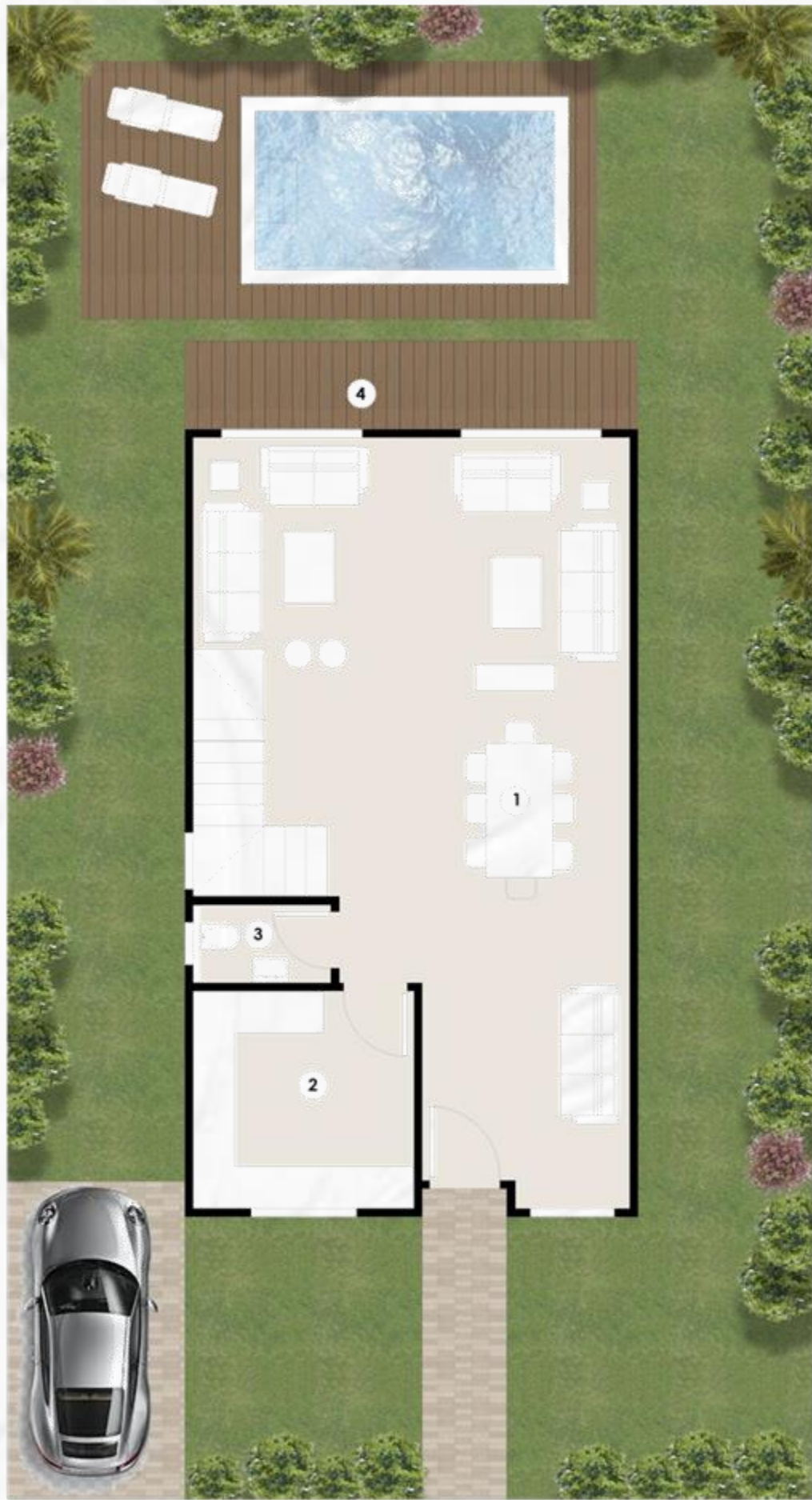
Ample space for large families

3

Bathrooms

Luxury and convenience

STAND ALONE VILLA – TYPE A 243 M²



GROUND FLOOR



FIRST FLOOR

STAND ALONE VILLA – TYPE A



ROOF

Total Built-up		243 m ²
No	Room	Dimensions
Ground Floor		
1	Reception & Dining	3.11 X 6.43 + 4.41 X 4.72 + 3.30 X 3.31
2	Kitchen	3.30 m X 3.37 m
3	Guest Toilet	2.19 m X 1.34 m
4	Terrace	6.43 m X 1.25 m
First Floor		
5	Master Bedroom	4.14 m X 4.01 m
6	Dressing room	1.27 m X 2.54 m
7	Master Bathroom	1.84 m X 2.42 m
8	Terrace	2.16 m X 1.10 m
9	Bedroom	3.54 m X 3.89 m
10	Bedroom	3.54 m X 3.94 m
11	Bathroom	2.59 m X 1.79 m
12	Living Room	3.19 m X 3.07 m
13	Terrace	2.00 m X 1.05 m
Roof Floor		
14	Living room	3.61m X 3.83 m
15	Terrace	6.43 m X 4.99 m + 6.43 X 5.12

Twin-Houses

Floor Plans

UNIT TYPE

Twin-houses: Floor Plans

Beautiful semi-detached homes that combine privacy with a connected neighbourhood feel. Perfectly designed for modern family living with elegant layouts and efficient space planning.

208

Built-up area (m²)

Optimised for comfort and style

3+

Bedrooms

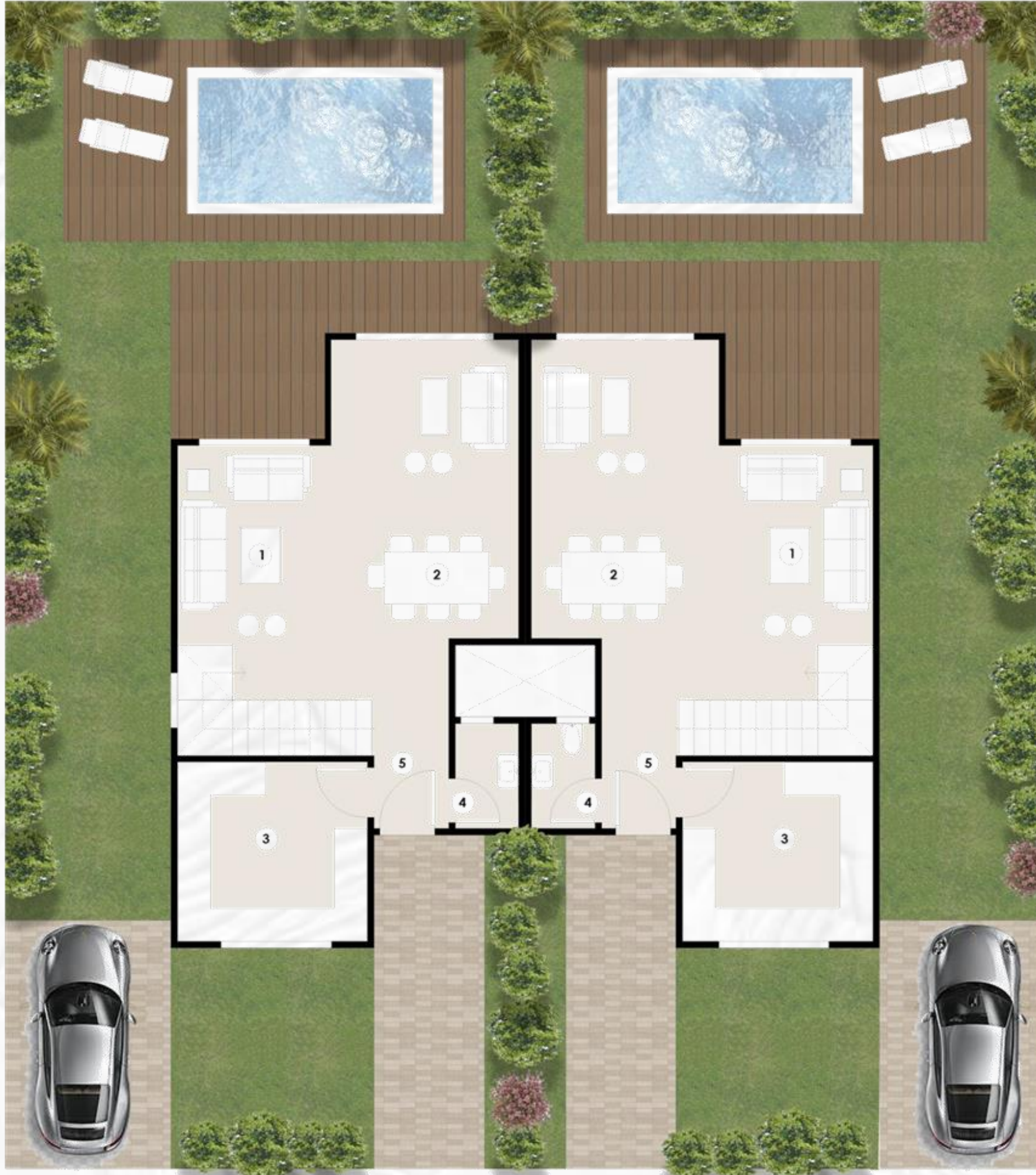
Flexible space for growing families

3

Bathrooms

Contemporary and practical design

TWIN VILLA - TYPE B 208 M²



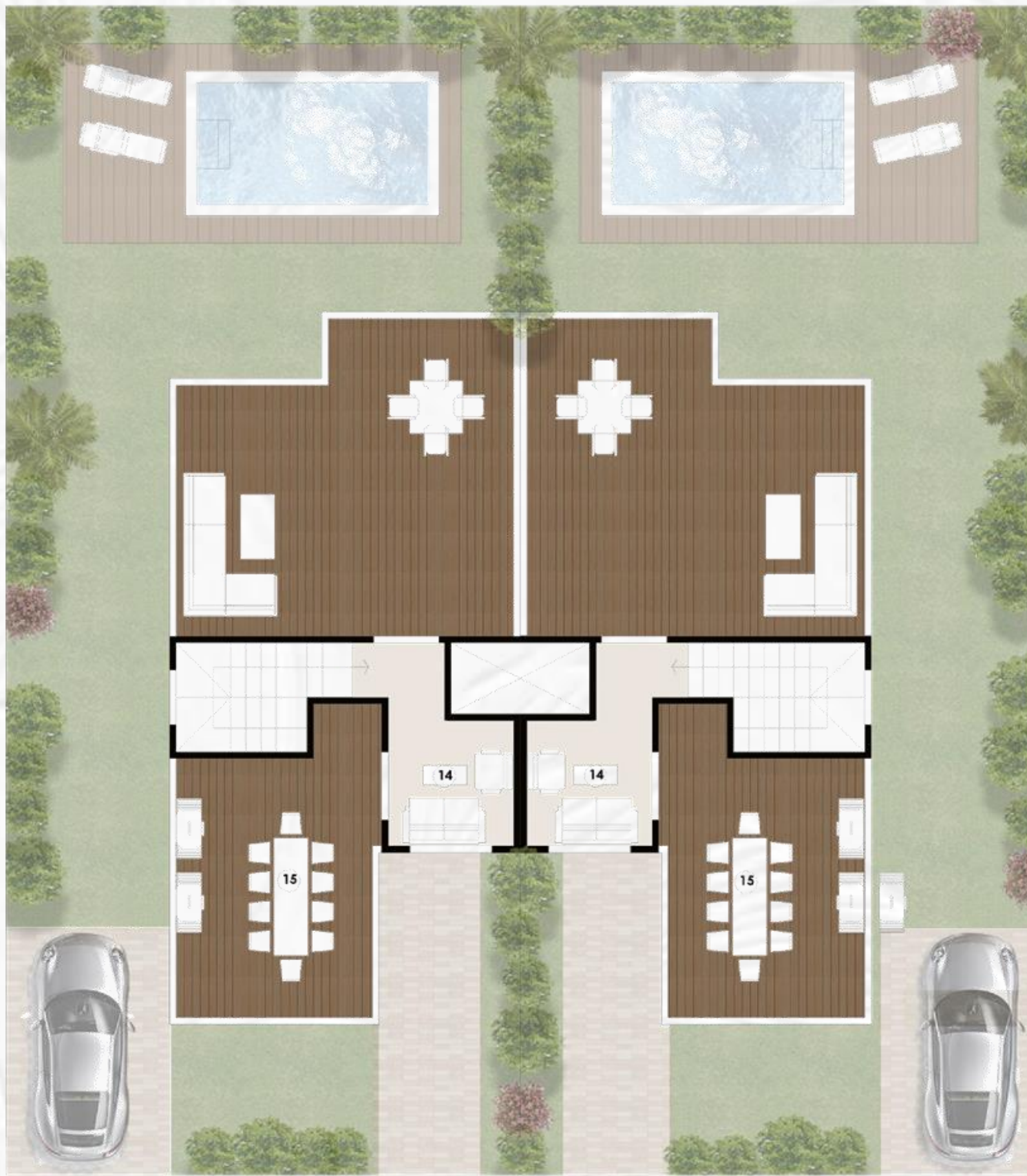
GROUND FLOOR

TWIN VILLA - TYPE B 208 M²



FIRST FLOOR

TWIN VILLA - TYPE B 208 M²



ROOF

Total Built-up	208 m ²
----------------	--------------------

No	Room	Dimensions
Ground Floor		
1	Reception	4.62 m X 2.79 m
2	Dining Room	3.64 m X 5.42 m
3	Kitchen	3.25 m X 3.45 m
4	Guest Toilet	1.90 m X 1.07 m
5	Entrance Lobby	2.02 m X 1.35 m
6	Terrace	2.79 m X 3.22 m + 3.64 m X 1.30 m
First Floor		
7	Master Bedroom	3.89 m X 4.76 m
8	Master Bathroom	1.67 m X 2.54 m
9	Terrace	2.20 m X 1.10 m
10	Bedroom	3.74 m X 3.54 m
11	Bedroom	3.64 m X 3.64 m
12	Bathroom	2.42 m X 1.79 m
13	Terrace	2.40 m X 1.10 m
Roof Floor		
14	Living room	2.54 m X 2.42 m
15	Terrace	6.43 m X 5.94 m + 4.87 X 3.84

Town-Houses

*Floor Plans
(Cluster 1)*

UNIT TYPE

Town-houses: Floor Plans (Cluster 1)

Warm, contemporary homes designed for families seeking style, comfort, and a strong sense of community. Ideal for daily living with practical layouts and inviting outdoor spaces.

208

Built-up area (m²)

Optimised for comfort

3+

Bedrooms

Flexible space for families

3

Bathrooms

Practical and modern

TOWN VILLA - TYPE B 208 M²



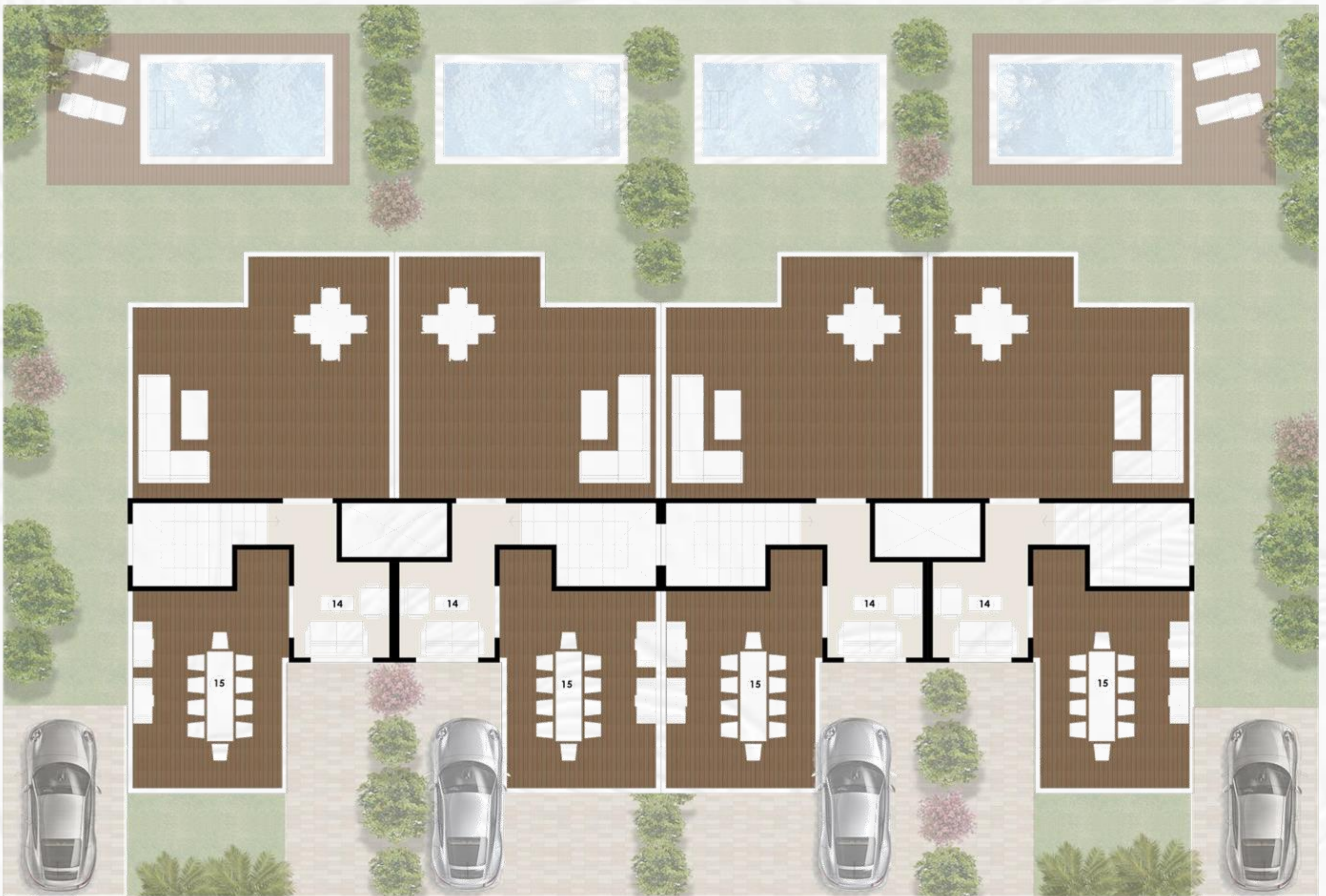
GROUND FLOOR

TOWN VILLA - TYPE B 208 M²



FIRST FLOOR

TOWN VILLA - TYPE B 208 M²



ROOF

TOWN VILLA - TYPE B

Total Built-up	208 m ²
----------------	--------------------

No	Room	Dimensions
Ground Floor		
1	Reception & Dining Room	3.64 m X 5.54 m
2	Reception & Dining Room	4.74 m X 2.79 m
3	Kitchen	3.45 m X 3.69 m
4	Guest Toilet	2.14 m X 1.39 m
5	Entrance Lobby	3.56 m X 1.35 m
6	Terrace	2.79 m X 3.22 m + 3.64 m X 1.30 m

First Floor		
7	Master Bedroom	3.89 m X 4.76 m
8	Master Bathroom	1.67 m X 2.54 m
9	Terrace	2.20 m X 1.10 m
10	Bedroom	3.74 m X 3.54 m
11	Bedroom	3.64 m X 3.64 m
12	Bathroom	2.42 m X 1.79 m
13	Terrace	2.40 m X 1.10 m

Roof Floor		
14	Living room	2.54 m X 2.42 m
15	Terrace	6.43 m X 5.94 m + 4.87 X 3.84

Town-Houses

*Floor Plans
(Cluster 2)*

UNIT TYPE

Town-houses: Floor Plans (Cluster 2)

Explore our premium corner town-houses in Cluster 2, featuring larger land areas, enhanced privacy, and expansive gardens. These residences offer open views and a distinguished position within the community.

269

Built-up area (m²)

Spacious design, elevated living

4+

Bedrooms

Ample space for large families

3

Bathrooms

Contemporary and practical

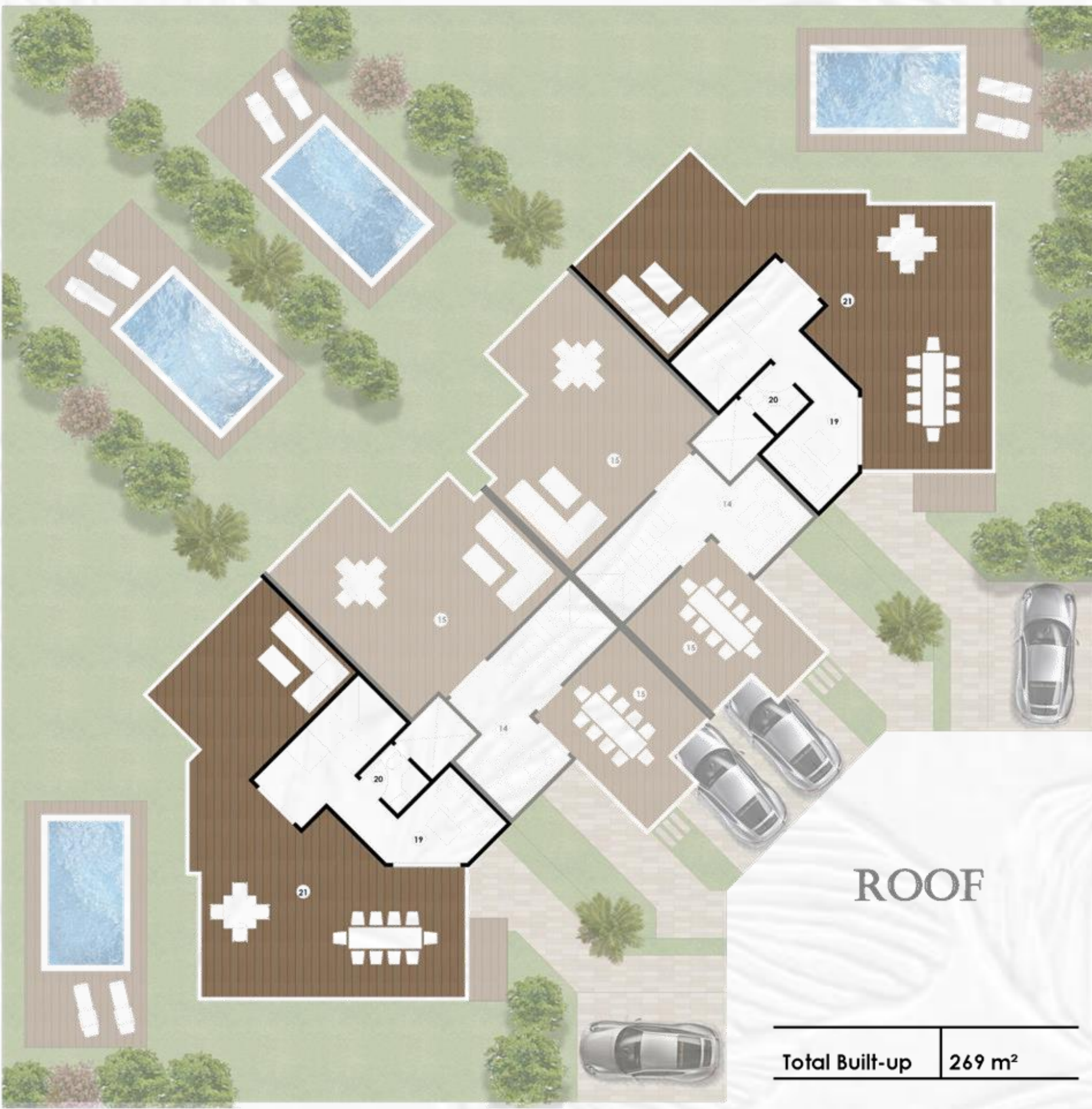
CORNER
VILLA TYPE C
269 M²



CORNER
VILLA TYPE C
269 M²



CORNER VILLA TYPE C 269 M²



Room	Dimensions
Ground Floor	
1 Reception	3.50 m X 3.92 m + 4.60 m X 4.05m
2 Dining	3.22 m X 4.04 m
3 Kitchen	3.22 m X 3.74 m
4 Guest Toilet	2.14 m X 1.24 m
5 Maid's room	2.48 m X 2.89 m
6 Maid's toilet	1.02 m X 2.14 m
7 Entrance Lobby	3.74 m X 1.47 m
8 Terrace	3.72 m X 1.55 m + 1.55 m X 6.65 m
9 Kitchen Terrace	1.50 m X 3.74 m
First Floor	
10 Master Bedroom	4.44 m X 3.84 m
11 Dressing room	1.80 m X 2.82 m
12 Master Bathroom	1.84 m X 2.61 m
13 Terrace	2.45 m X 1.15 m
14 Bedroom	3.62 m X 3.84 m
15 Bedroom	3.92 m X 4.14 m
16 Terrace	1.15 m X 2.30 m
17 Bathroom	2.66 m X 1.72 m
18 Living Room	4.40 m X 3.79 m
Roof Floor	
19 Living room	2.61 m X 3.59 m
20 Bathroom	1.62 m X 1.72 m
21 Terrace	7.86 m X 4.15 m + 5.07m X 4.02 m

MIDDLE VILLA
TYPE
D 208 M²



MIDDLE VILLA
TYPE
D 208 M²



MIDDLE VILLA TYPE D 208 M²



ROOF

Total Built-up		208 m ²
No	Room	Dimensions
Ground Floor		
1	Reception	4.74 m X 2.91 m
2	Dining Room	3.52 m X 5.36 m
3	Kitchen	3.69 m X 3.49 m
4	Guest Toilet	2.61 m X 1.25 m
5	Entrance Lobby	2.45 m X 1.50 m
6	Terrace	2.79 m X 3.47 m + 3.52 m X 1.55 m
First Floor		
7	Master Bedroom	3.89 m X 4.76 m
8	Master Bathroom	1.80 m X 2.61 m
9	Terrace	2.20 m X 1.10 m
10	Bedroom	3.74 m X 3.54 m
11	Bedroom	3.64 m X 3.84 m
12	Bathroom	2.42 m X 1.79 m
13	Terrace	2.40 m X 1.10 m
Roof Floor		
14	Living room	2.71 m X 2.61 m
15	Terrace	6.56 m X 5.94 m + 4.99 X 3.84

It's More Than a Home. It's Where You Belong.

LIVITY Residence is a boutique community where architecture, nature, and everyday life come together in perfect balance. A place where mornings feel lighter, evenings feel calmer, and home feels exactly as it should.

LIVITY
RESIDENCE

LIFE AS IT IS LIVED

LIVITY

R E S I D E N C E



ZG ZONES OF GROWTH[®]
DEVELOPMENTS