

DUBAI ISLANDS

HELVETIA

M A R I N E

DEVELOPED BY  **DHG**
PROPERTIES



CONCEPT BEHIND

Your Home as the Statment.

A New Wave of Coastal Elegance

Helvetia Marine brings the rhythm of the sea to modern architecture and refined living.

Located on an exclusive waterfront destination, your new residence on Dubai Islands is a coastal sanctuary where timeless design meets the vibrant energy of Dubai.



Helvetia Living – Quality with Style

Helvetia, the historic name for Switzerland, today stands for a premium residential concept by DHG — reflecting the superior quality and precision rooted in our Swiss origins.

At Helvetia Marine, this legacy unfolds in a waterfront setting, offering a lifestyle defined by elegance, serenity, and enduring value.





Architecture Inspired by Nature's Artistry

Modern and fluid, the architecture of Helvetia Marine draws inspiration from the sophisticated beauty of corals.

This design philosophy shapes a distinctive silhouette that blends natural form with contemporary precision, making a refined statement on Dubai Islands.

Views that Reflect A Life Well-Lived

From the sea horizon to the Dubai skyline, every residence is framed by inspiring views.

Watch the sun rise over the marina or set behind the Burj Khalifa. Surrounded by water, greenery, and downtown vistas, life here is defined by perspective.





COASTAL SETTING

Your Life by
the Sea.



A Coastal City within the City

Set on the Island A of the reimagined Dubai Islands, Helvetia Marine places you at the forefront of the city's next great chapter.

This exclusive new district brings together waterfront lifestyle and urban convenience.



The Harmony of Island Living

Dubai Islands is envisioned as a world-class island community with an elegant blend of residential, retail, hospitality, and leisure.

Marinas, beaches, resorts, and parks shape a lifestyle rooted in nature, framed by skyline views.



Welcome to a Lifestyle Shaped by the Sea!

Imagine sandy shores and inviting pristine waters at your doorstep, and 20 kilometers of stunning beaches to choose from.





Unforgettable Moments by the Sea

Whether it's a morning swim, an afternoon under the sun, or a sunset stroll by the water, the island's premium beach leisure amenities transform every moment into a seaside ritual of relaxation and refinement.





Infinite Experiences Await

Stroll along promenades lined with charming cafés and restaurants. Explore convenient shopping at the nearby mall. Unwind in one of the many parks or enjoy a round of golf.

At Dubai Islands, five interconnected isles offer a world of experiences — all within reach, all designed for inspired living.



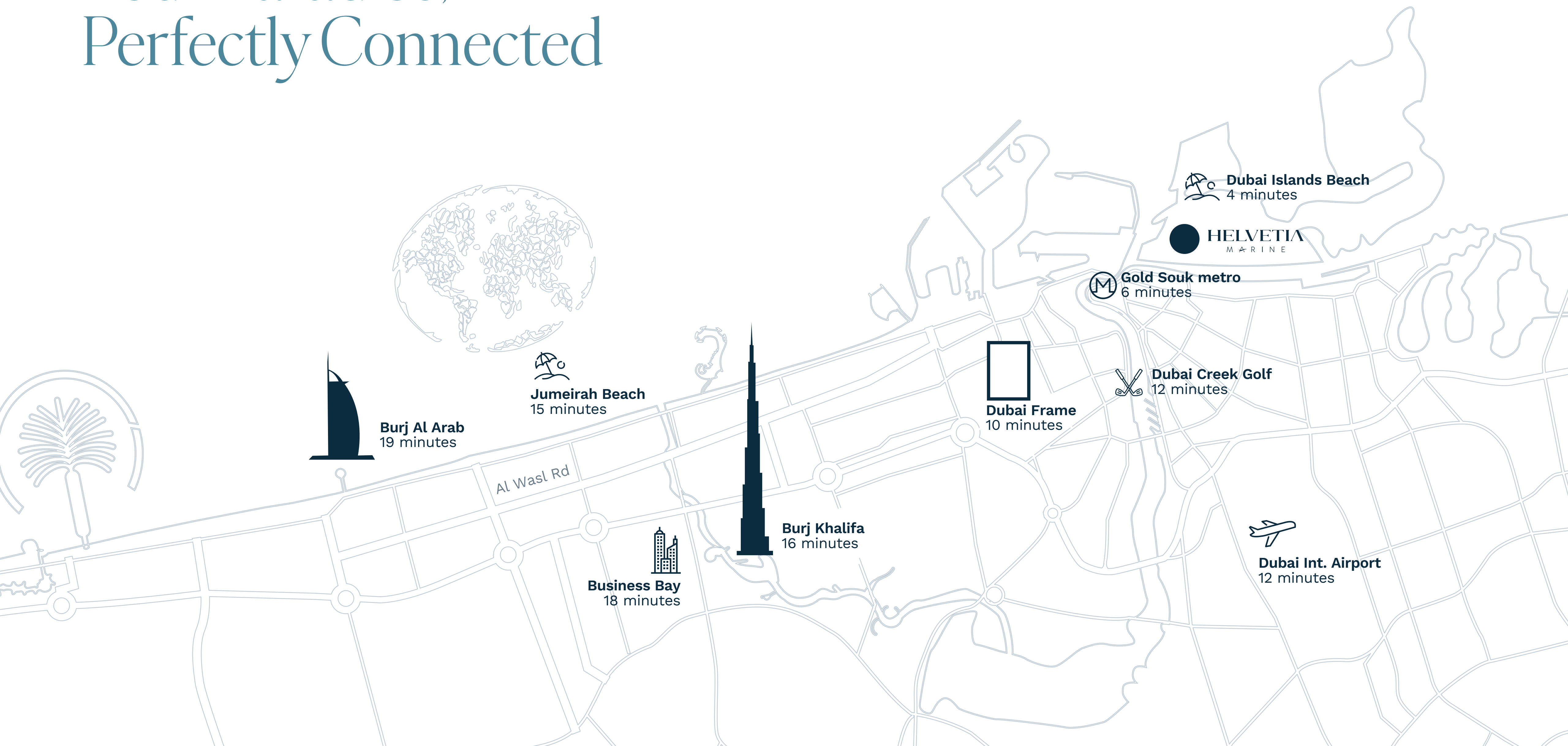
Where Serenity Meets Connectivity

Enjoy the balance of peace and energy.

Live minutes from the beach, close to downtown and its iconic landmarks, and connected to every part of Dubai by a growing network of roads and future metro links.



Your Paradise, Perfectly Connected



VISION OF INTERIORS

Your World
Designed to Inspire.

Form and Function Framed by Beauty

Elegant, thoughtful, timeless.

Guided by precision. Built to the highest standards.

Helvetia Marine reflects the Swiss tradition of uncompromising quality, brought to life in Dubai Islands.

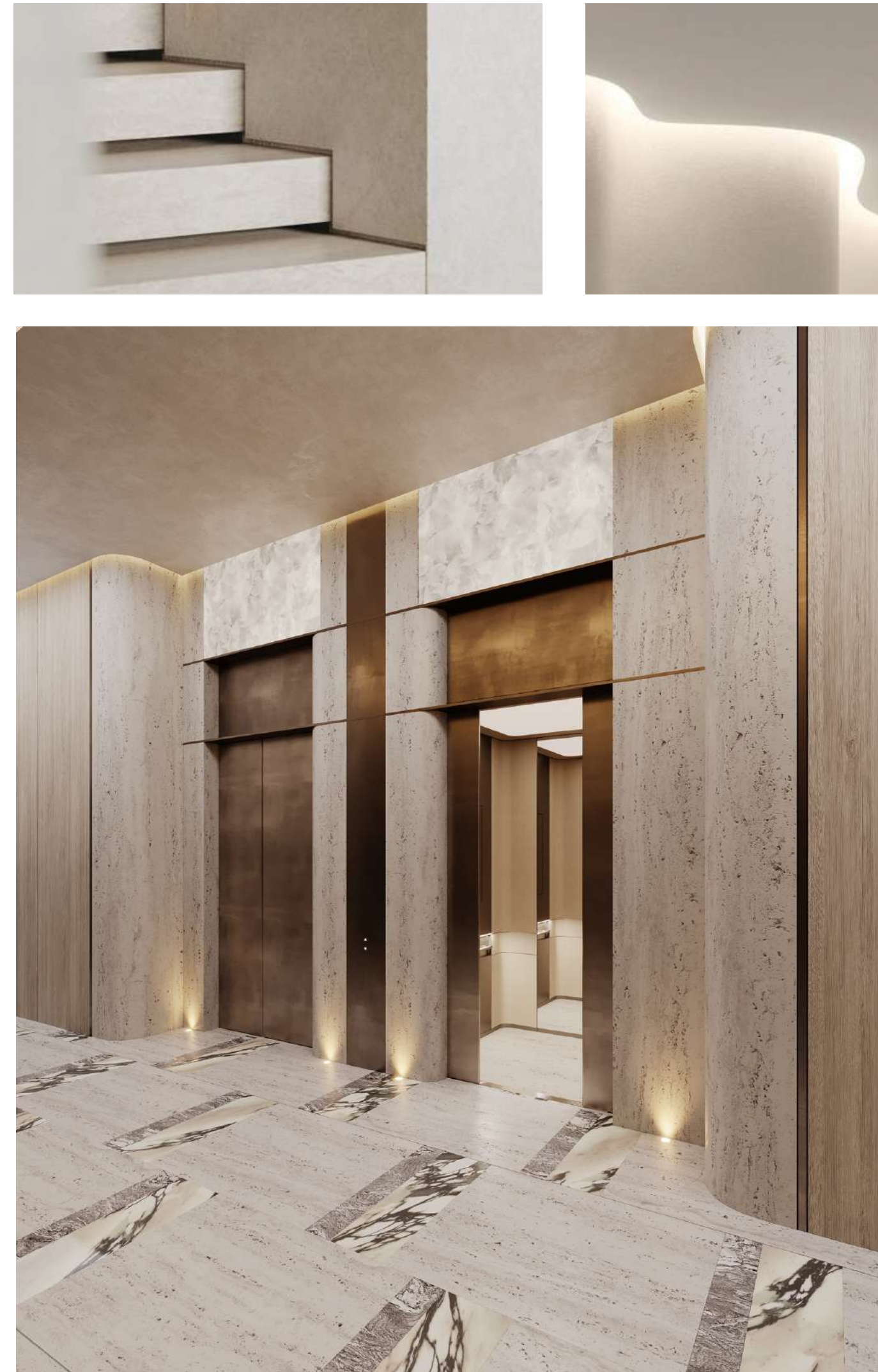




Interiors Reflecting Identity

At Helvetia Marine, the interiors are meticulously curated to reflect a cosmopolitan spirit infused with Mediterranean charm.

The design philosophy draws inspiration from contemporary yacht living. A balance of calming natural tones and uplifting accents creates spaces that radiate sophistication and serenity.











Sensory Living in Every Detail

Natural tones and textures in the interiors are enriched with modern elegance, creating spaces of tranquil beauty.

Premium materials like oak and travertine, along with luxury finishes in marble and bronze metal, set the tone. Reflective elements paired with blue details add depth and distinction.





Designed for the Way You Live

Thoughtfully designed residences at Helvetia Marine offer a selection of bespoke layouts tailored to diverse lifestyles.

Whether you choose a one-, two-, or three-bedroom apartment, each home ensures optimal flow, abundant natural light, and seamless blend of functionality and style.

Townhouse Residences

Distinctive two-bedroom duplexes feature a private green terrace on the lower level and a balcony above — designed to reflect refined living.

Soaring five-meter ceilings evoke a gallery-like ambiance, ideal for those who cherish openness.

Garden Residences

Enjoy resort-style comfort at home with a private outdoor garden.

A perfect combination of intimacy and indulgence brings a touch of everyday luxury to your lifestyle.



SMART LAYOUTS

Your Space
Perfectly Composed.

1-Bedroom Residence

Type 1

Thoughtfully designed to maximize space and comfort, this residence opens onto a generous terrace surrounded by greenery — creating a seamless transition between indoor sophistication and outdoor serenity.

Apartment Size

from 1,242.92 sq ft to 1,579.72 sq ft
from 115.47 sq m to 146.76 sq m

Apartment Number

102; 104
Type 1 without garden: 202; 205; 302; 305; 402;
405; 502; 505; 602; 605; 702; 704; 802; 804



1-Bedroom Residence

Type 2

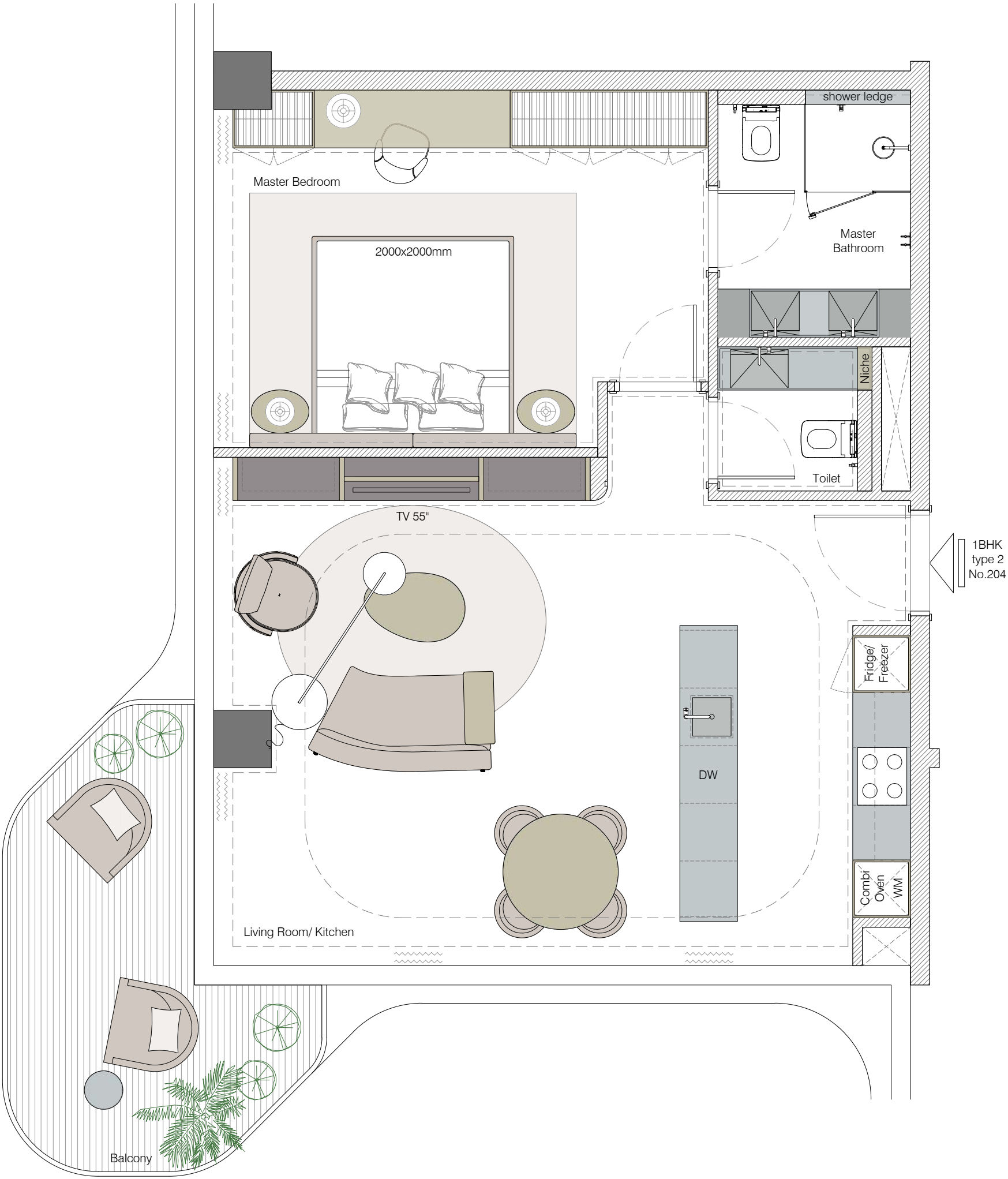
Bathed in natural light, this sun-filled home offers an airy layout with excellent flow. A corner balcony invites you to enjoy open views and peaceful moments throughout the day.

Apartment Size

from 802.88 sq ft to 861.65 sq ft
from 74.59 sq m to 146.76 sq m

Apartment Number

204; 304; 404; 504; 604



1-Bedroom Residence

Type 3

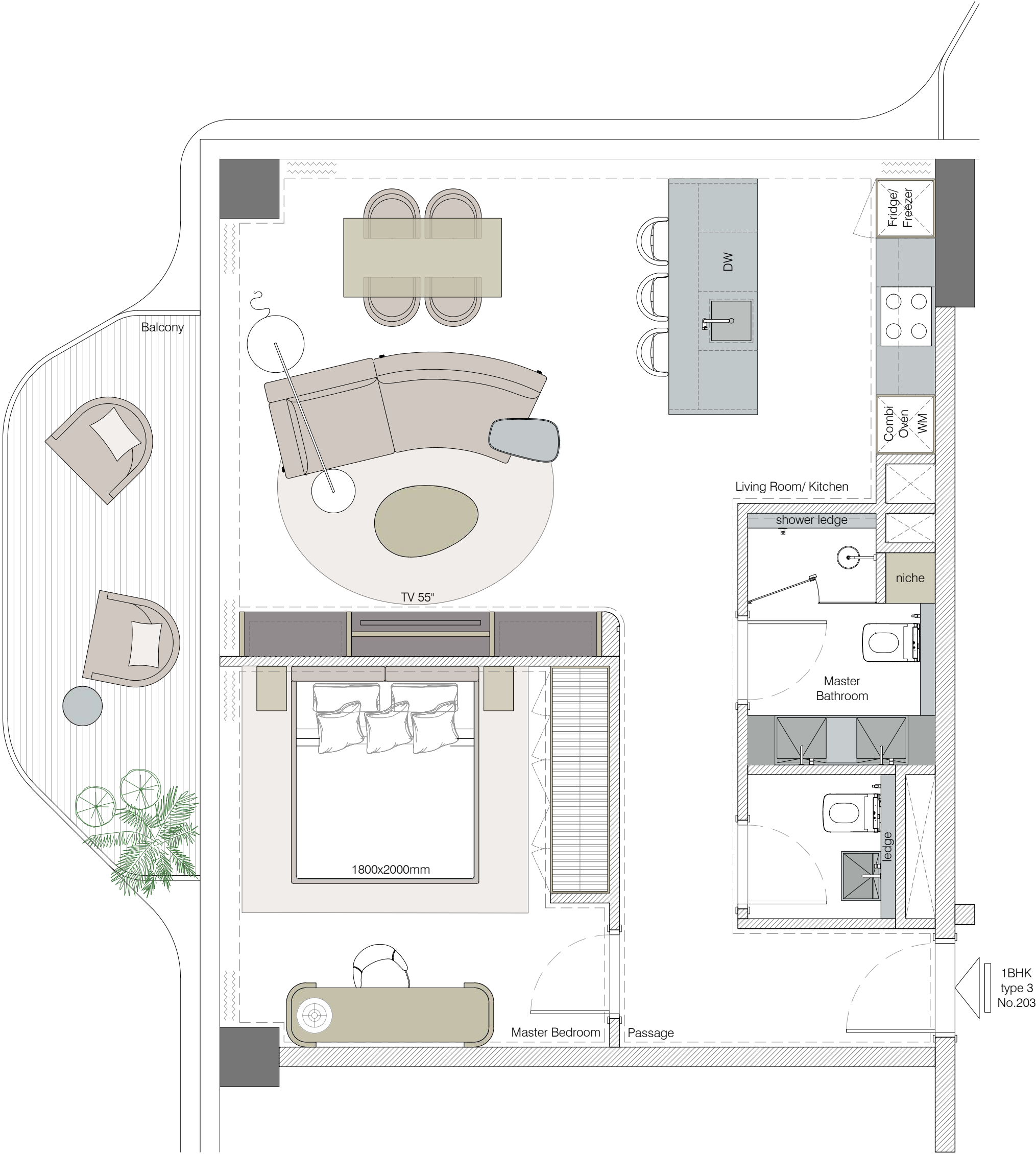
A smart layout complemented by stylish design — this apartment brings together comfort, openness, and light in perfect proportion.

Apartment Size

from 802.88 sq ft to 861.65 sq ft
from 74.59 sq m to 146.76 sq m

Apartment Number

203; 303; 403; 503; 603



2-Bedroom Residence

Type 1 - Duplex Apartment

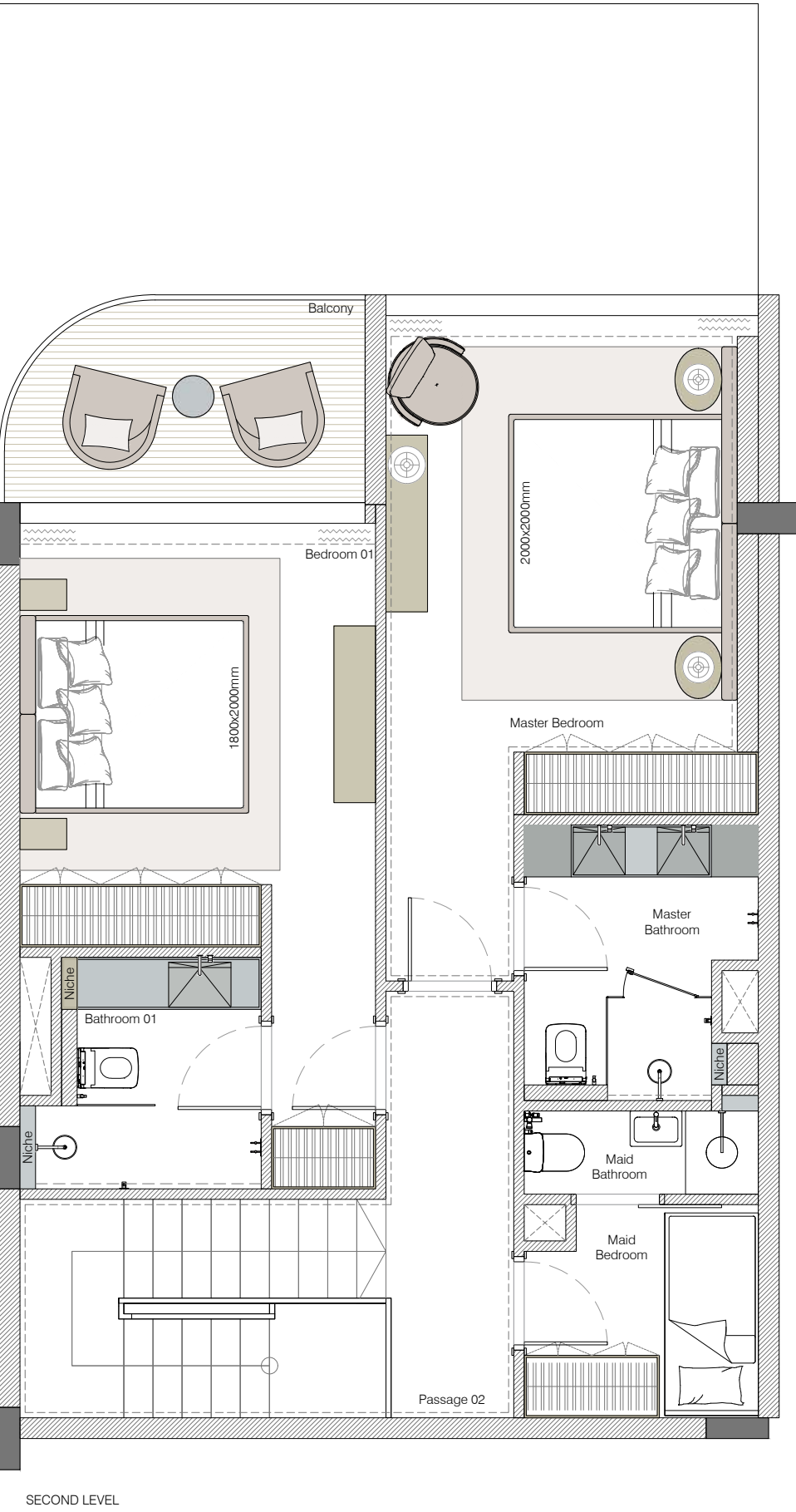
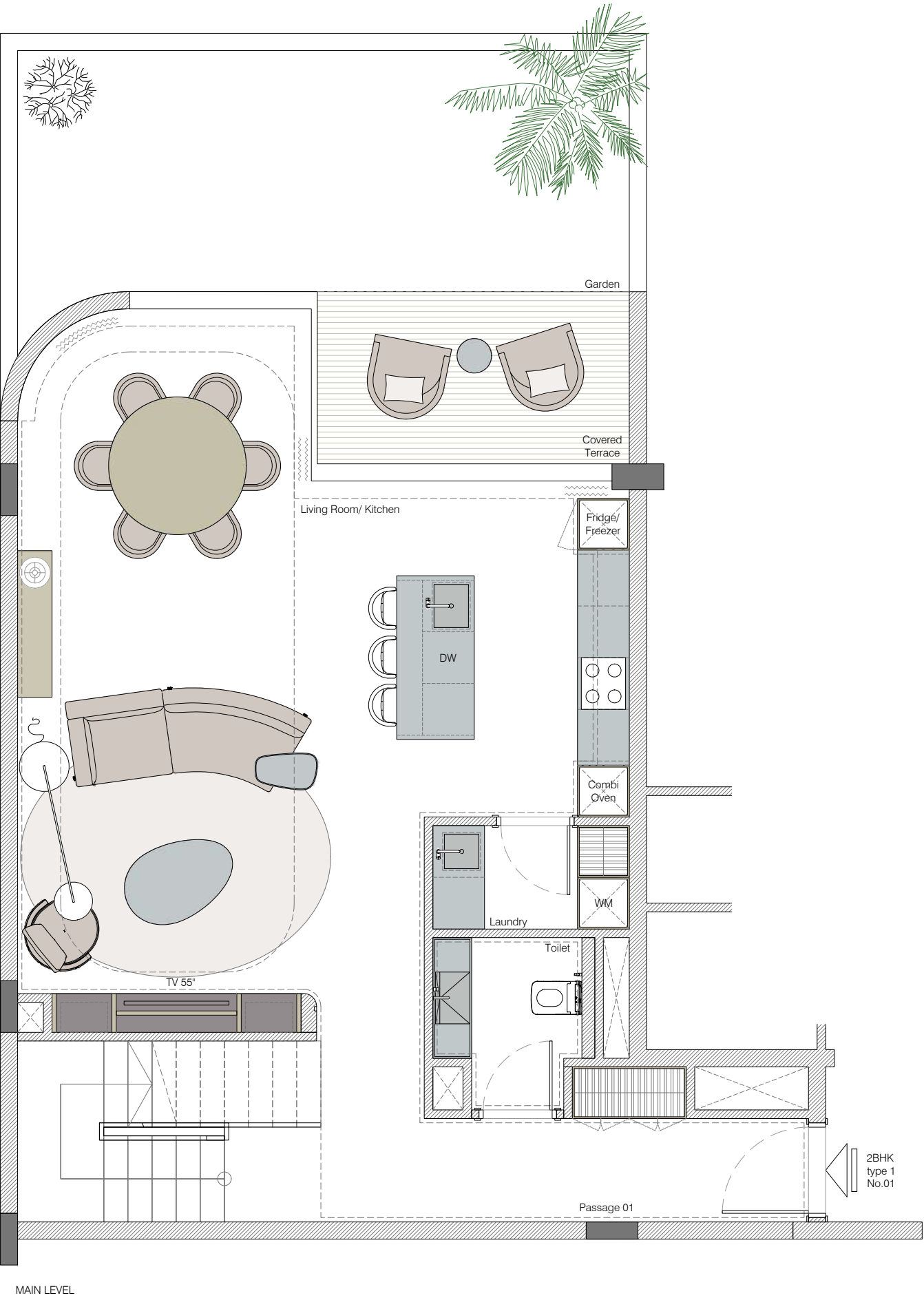
Experience elevated living across two meticulously designed levels. The ground floor features a spacious living and dining area that opens onto a private garden with a coveted terrace — perfect for entertaining or relaxing. Upstairs, the bedrooms offer privacy and comfort, complete with access to a balcony for tranquil outdoor moments and a maid’s room.

Apartment Size

from 1,593.92 sq ft to 1,757.10 sq ft
from 148.08 sq m to 163.24 sq m

Apartment Number

01; 05



2-Bedroom Residence

Type 2

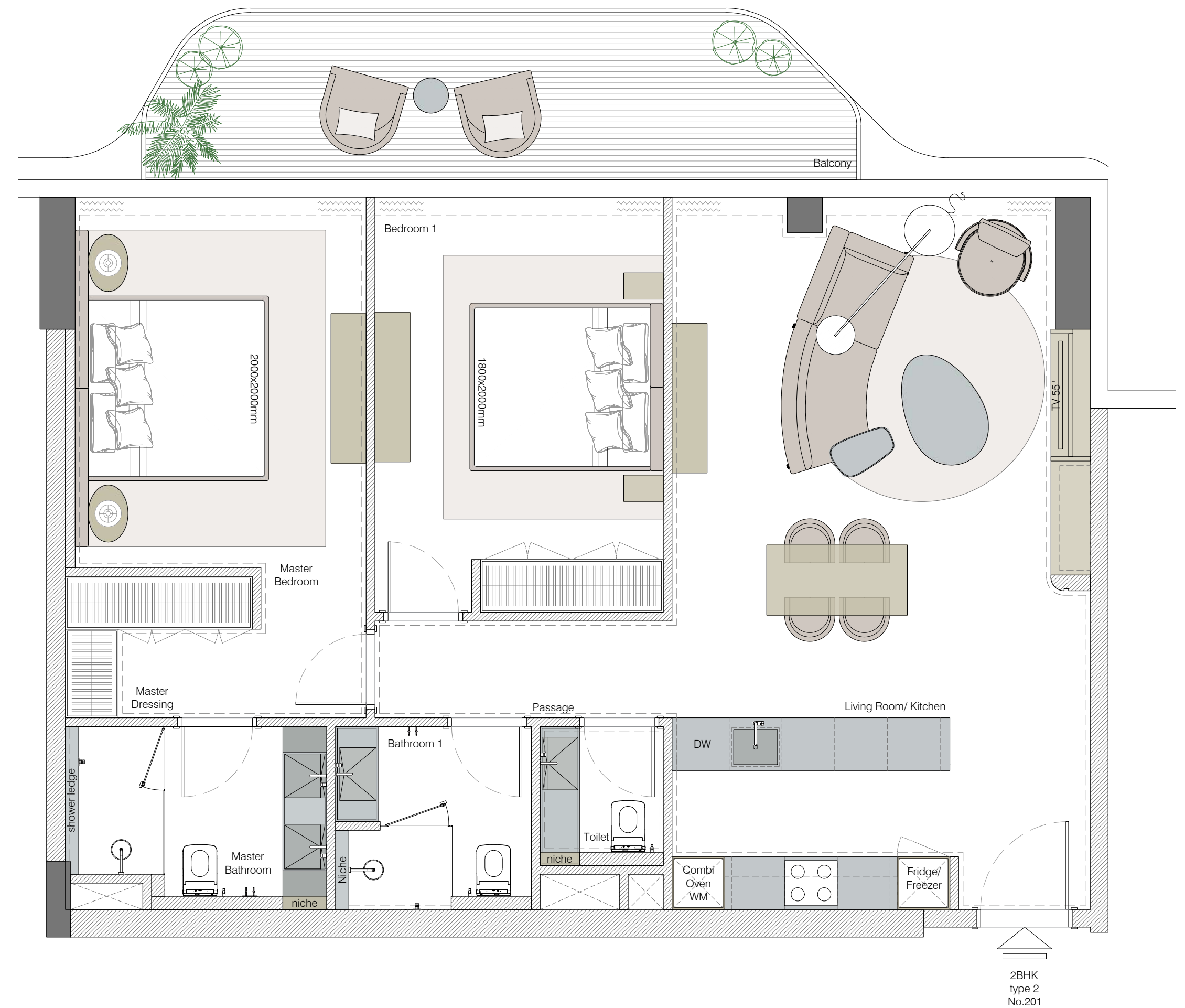
Spacious, well-zoned interiors ideal for couples or young families seeking harmony in everyday living.

Apartment Size

from 1,147.01 sq ft to 1,444.74sq ft
from 106.56 sq m to 134.22 sq m

Apartment Number

101; 201; 301; 401; 501; 601; 701; 801



2-Bedroom Residence

Type 3

This well-balanced residence combines smart spatial planning with a sense of openness and light. The result is a stylish, contemporary home that feels both spacious and inviting.

Apartment Size

from 1,147.01 sq ft to 1,444.74sq ft
from 106.56 sq m to 134.22 sq m

Apartment Number

207; 307; 407; 507; 607; 208; 308; 408; 508; 608



3-Bedroom Residence

Type 1

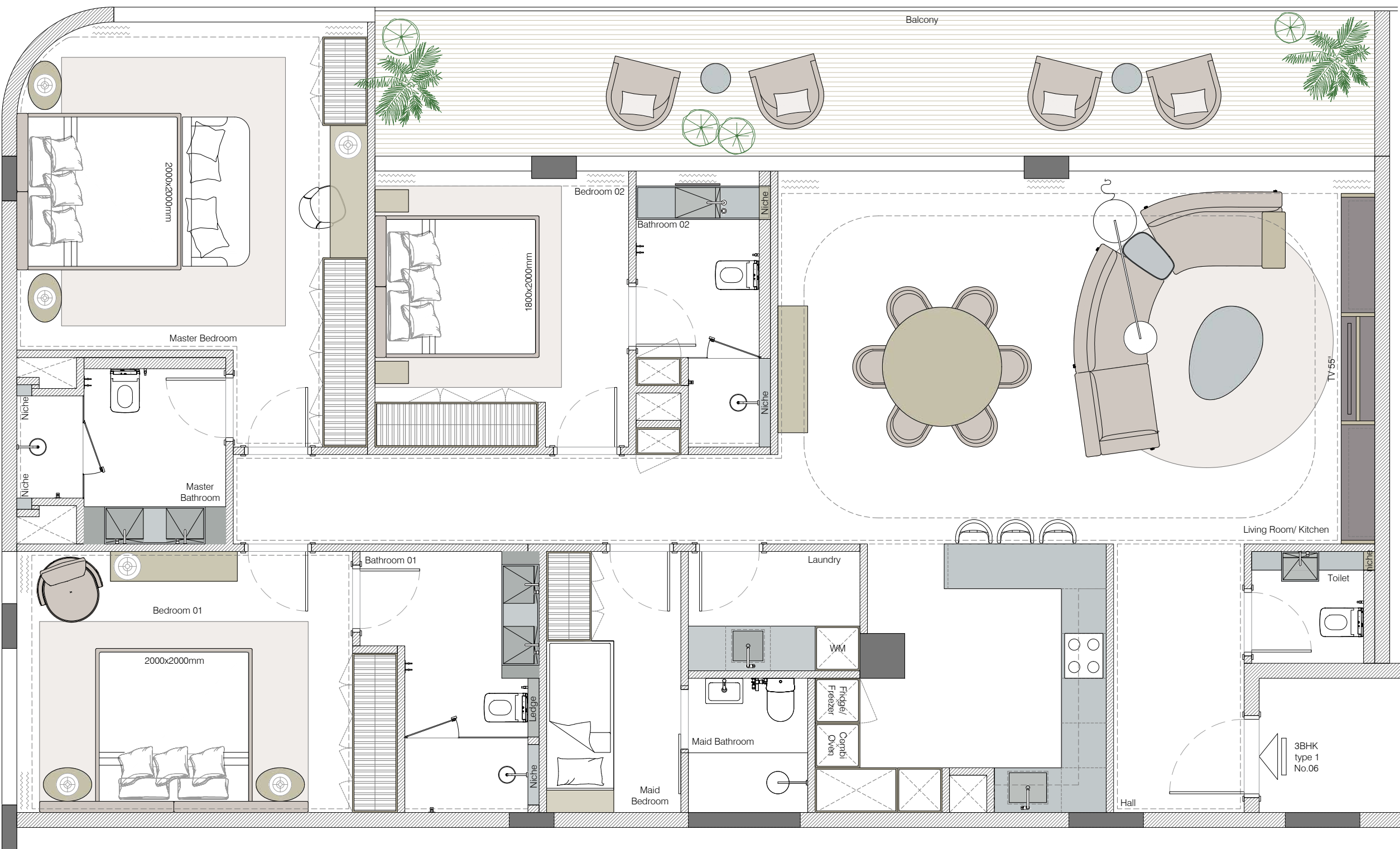
Generous dimensions with perfect composition and flow ensure a superior home for growing families. In addition to three bedrooms, the apartment includes a maid's room, while a large balcony stretches seamlessly across the living and sleeping areas, bringing a continuous outdoor connection to everyday life.

Apartment Size

from 1,722.24 sq ft to 2,090.80 sq ft
from 160 sq m to 194.24 sq m

Apartment Number

06; 07



3-Bedroom Residence

Type 2

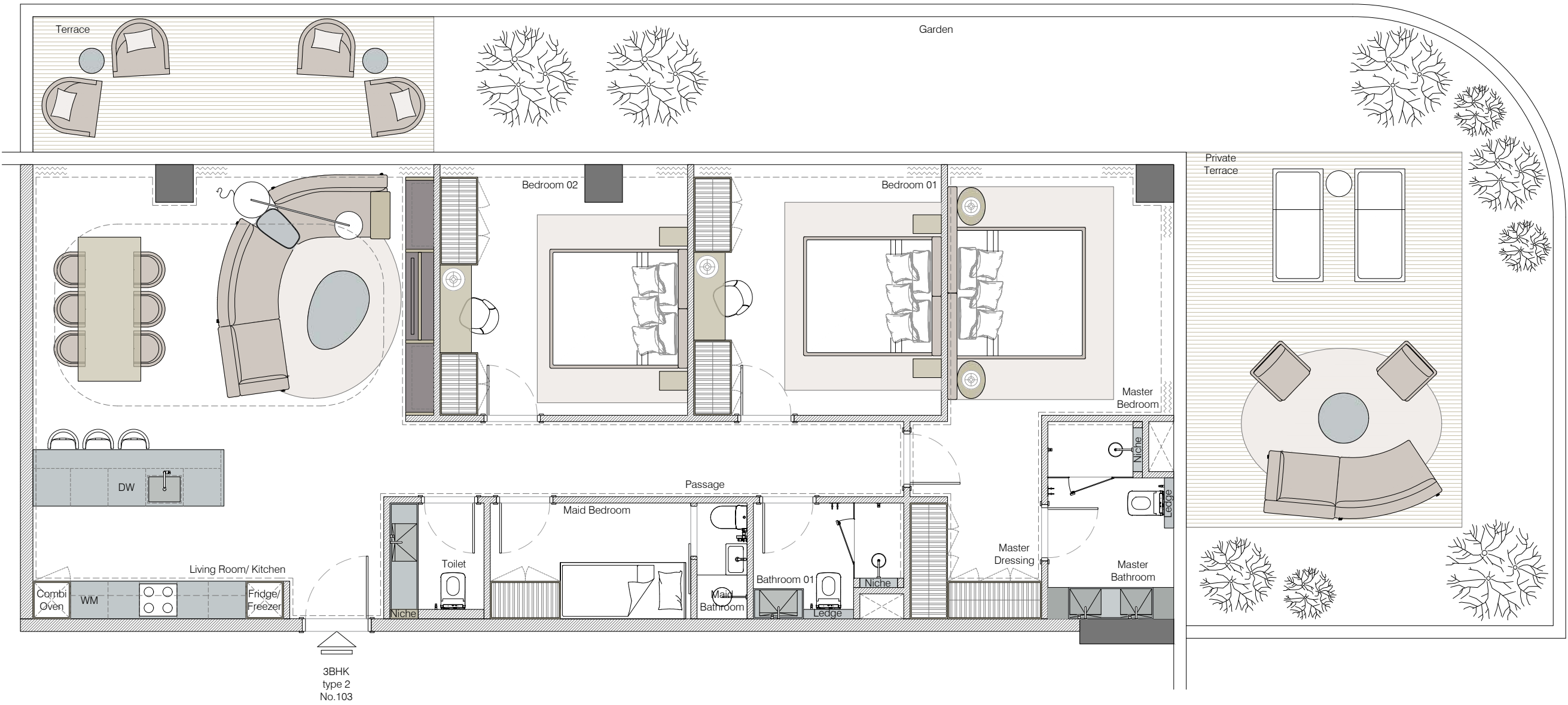
This spacious 3-bedroom home with maid's room belongs to a limited collection of garden apartments, offering superior comfort. Enjoy serene garden views and the luxury of two private terraces that extend your living space outdoors—perfect for family gatherings or peaceful moments of retreat.

Apartment Size

2,592.18 sq ft
240.82 sq m

Apartment Number

103



3-Bedroom Residence

Type 3

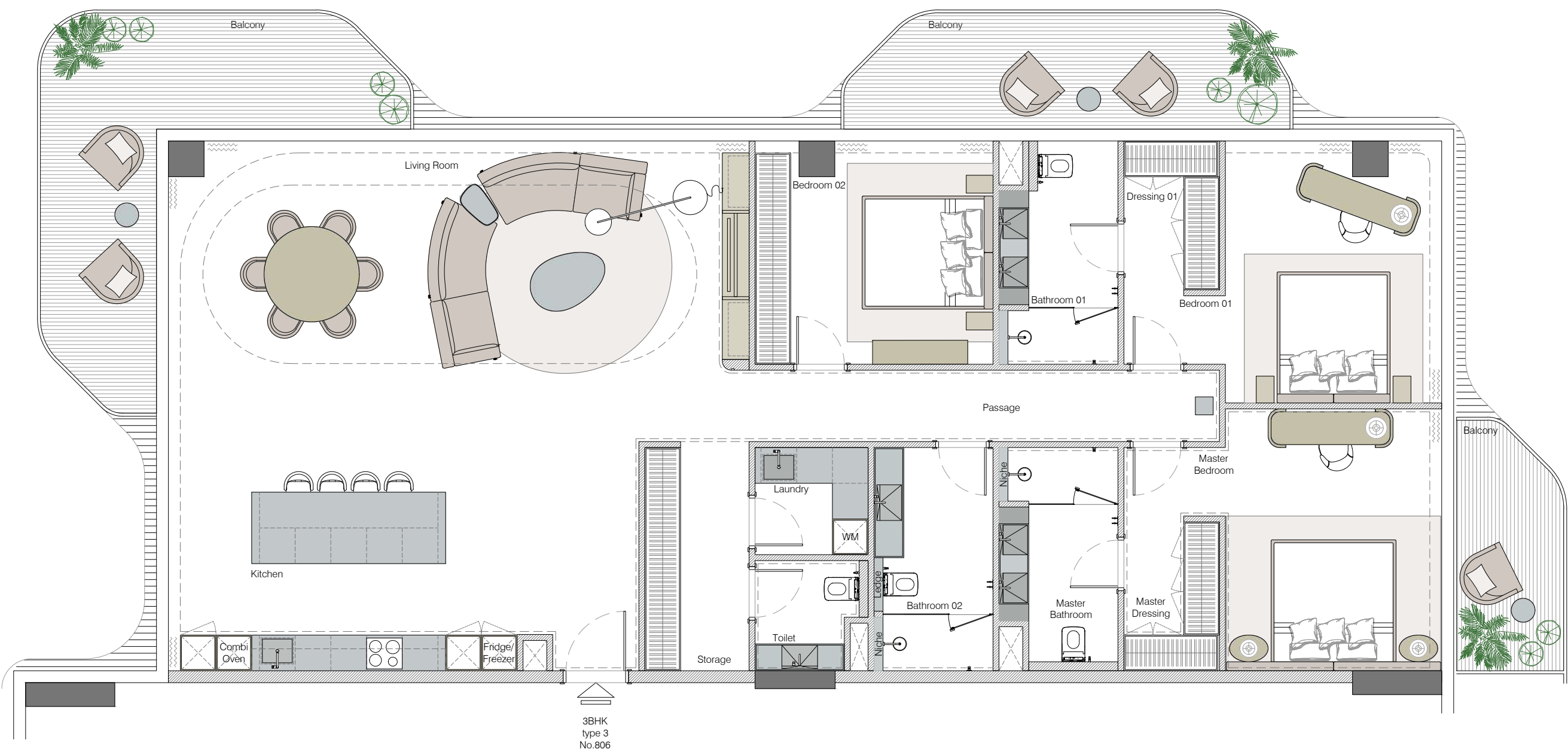
Bright, airy, and exceptionally well laid out, this 3-bedroom residence offers natural flow and generous space throughout. With three balconies every corner of the home connects to the outdoors.

Apartment Size

from 2,435.14 sq ft to 2,574.43 sq ft
from 226.23 sq m to 239.17 sq m

Apartment Number

706; 806



LIFESTYLE AMENITIES

Your Everyday
Elevated.



For Living in Balance

At Helvetia Marine, everyday life unfolds in spaces designed for well-being, connection, and leisure — from the exquisite podium garden to the panoramic rooftop sanctuary.

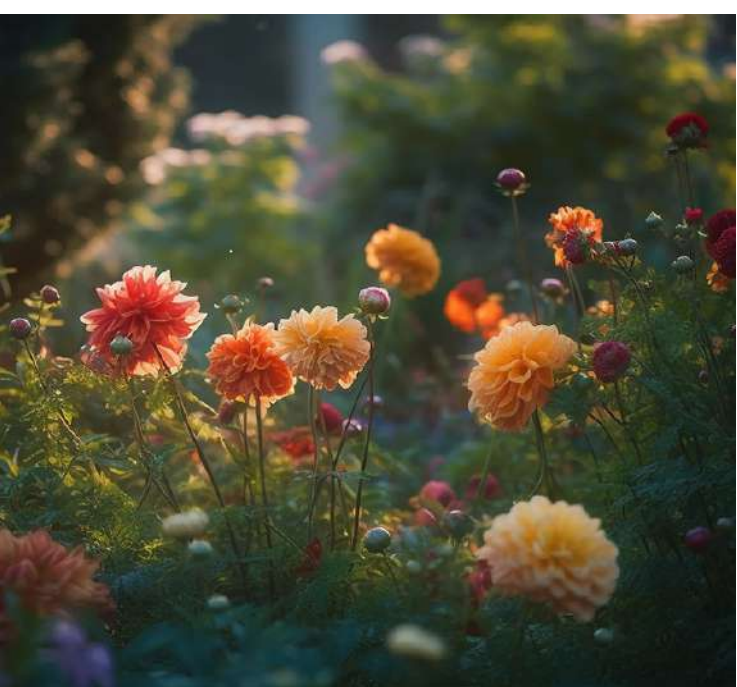


Exceptional Moments, Curated for You

Take in skyline and sea views from an elevated perspective of the rooftop pool with a chic bar. Unwind in dedicated yoga space or under elegant sun umbrellas.







Retreats of Wellness and Leisure

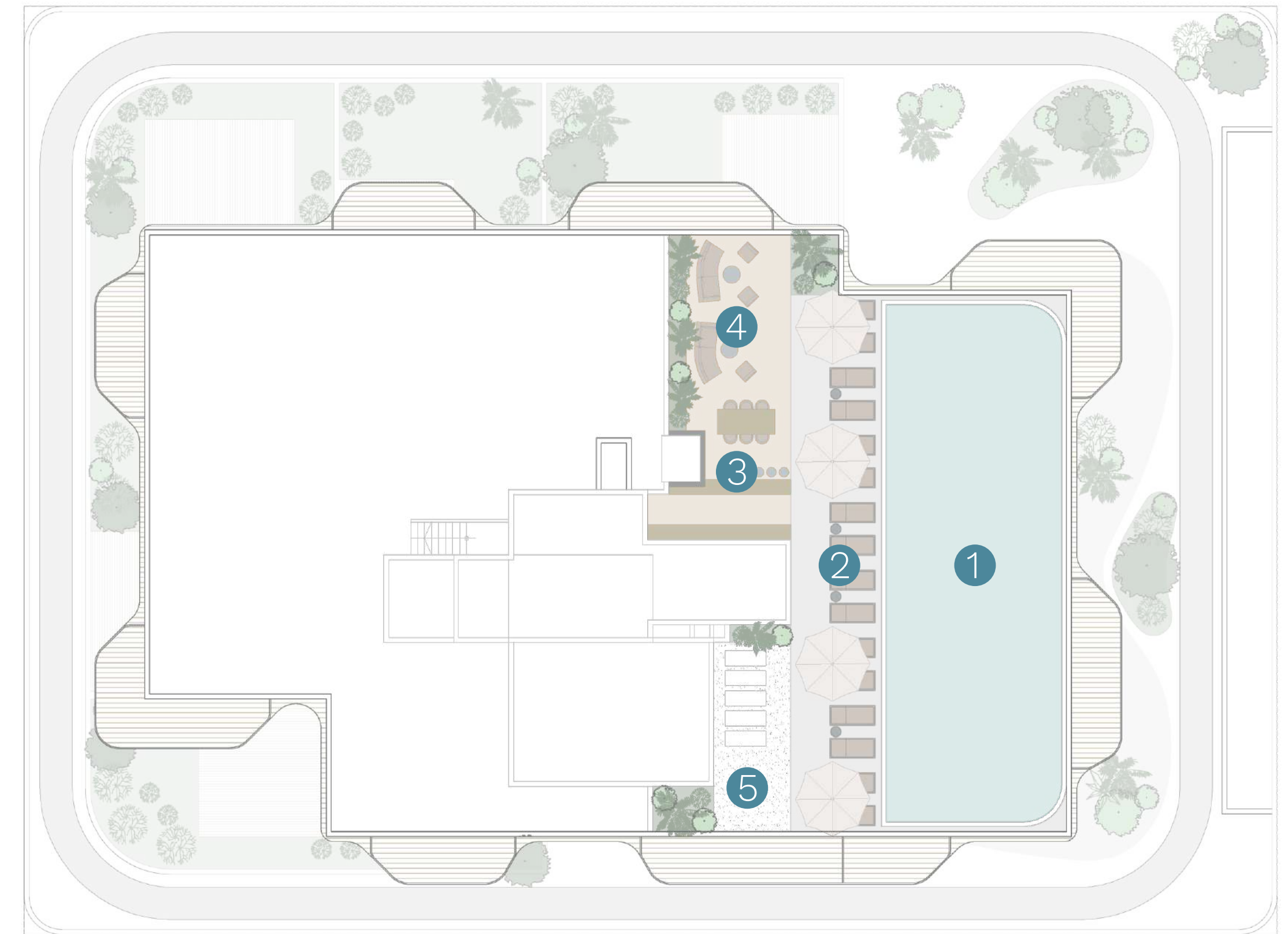
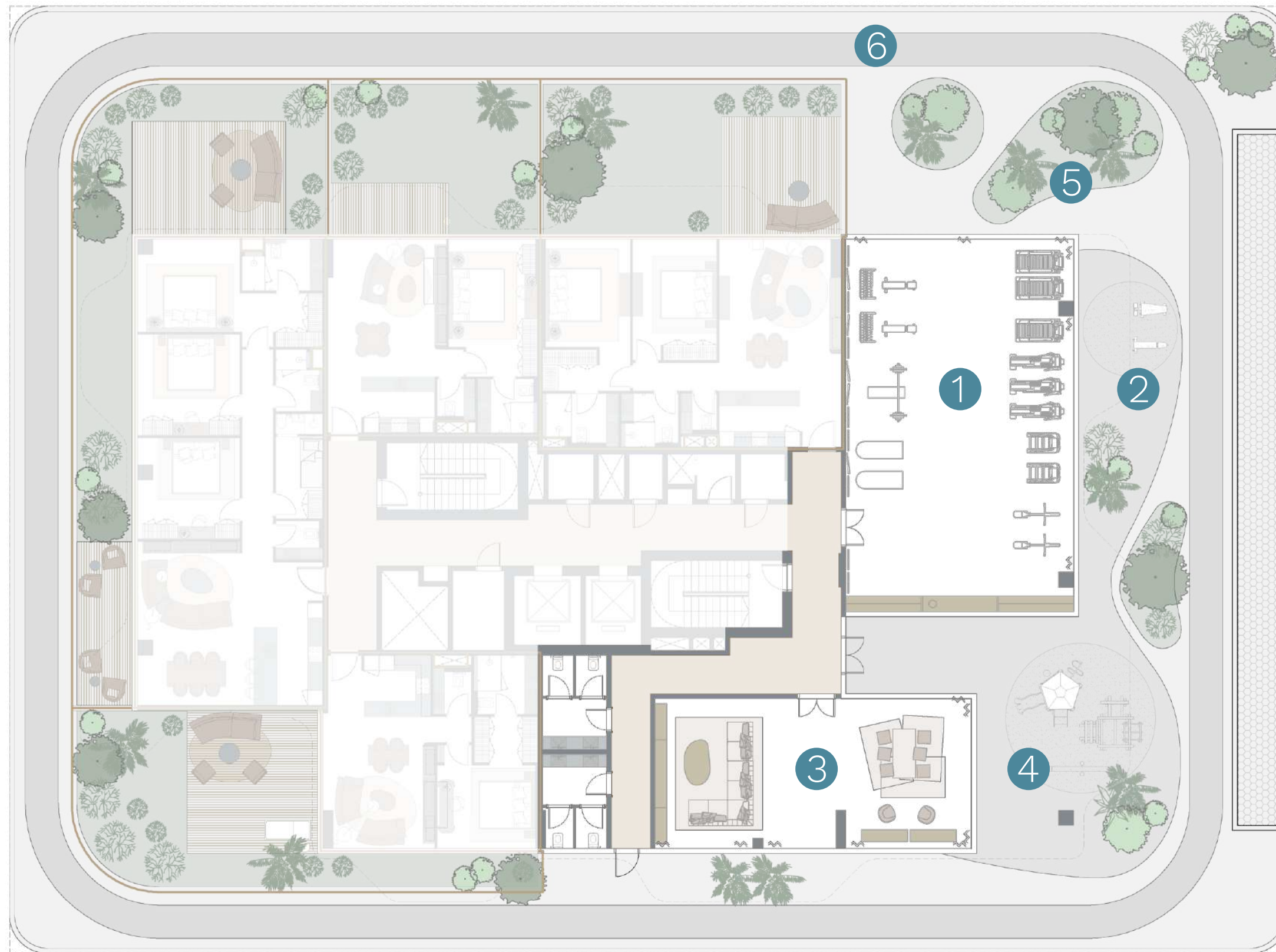
The podium-top garden serves as a green heart for relaxation and community time.

Stay active in an indoor and outdoor fitness area, equipped with high-end gear, offering training in stylish air-conditioned interiors or in the open air.

Entertain your friends in the social club - a welcoming lounge with both indoor comfort and alfresco flair, as the kids enjoy their playground.







First Floor Amenities

- 1 Indoor Gym
- 2 Outdoor Gym
- 3 Social Club & Relax Lounge
- 4 Kids' Playground
- 5 Garden
- 6 Jogging track

Rooftop Amenities

- 1 Infinity Swimming Pool
- 2 Sun Loungers
- 3 Pool Bar
- 4 Rooftop Lounge
- 5 Yoga & Meditation Area

SWISS QUALITY BY DHG

Your Future
with Value.



Helvetia Marine is developed by DHG Properties, the Dubai-based member of DHG — a Swiss real estate and construction group with more than 30 years of experience.

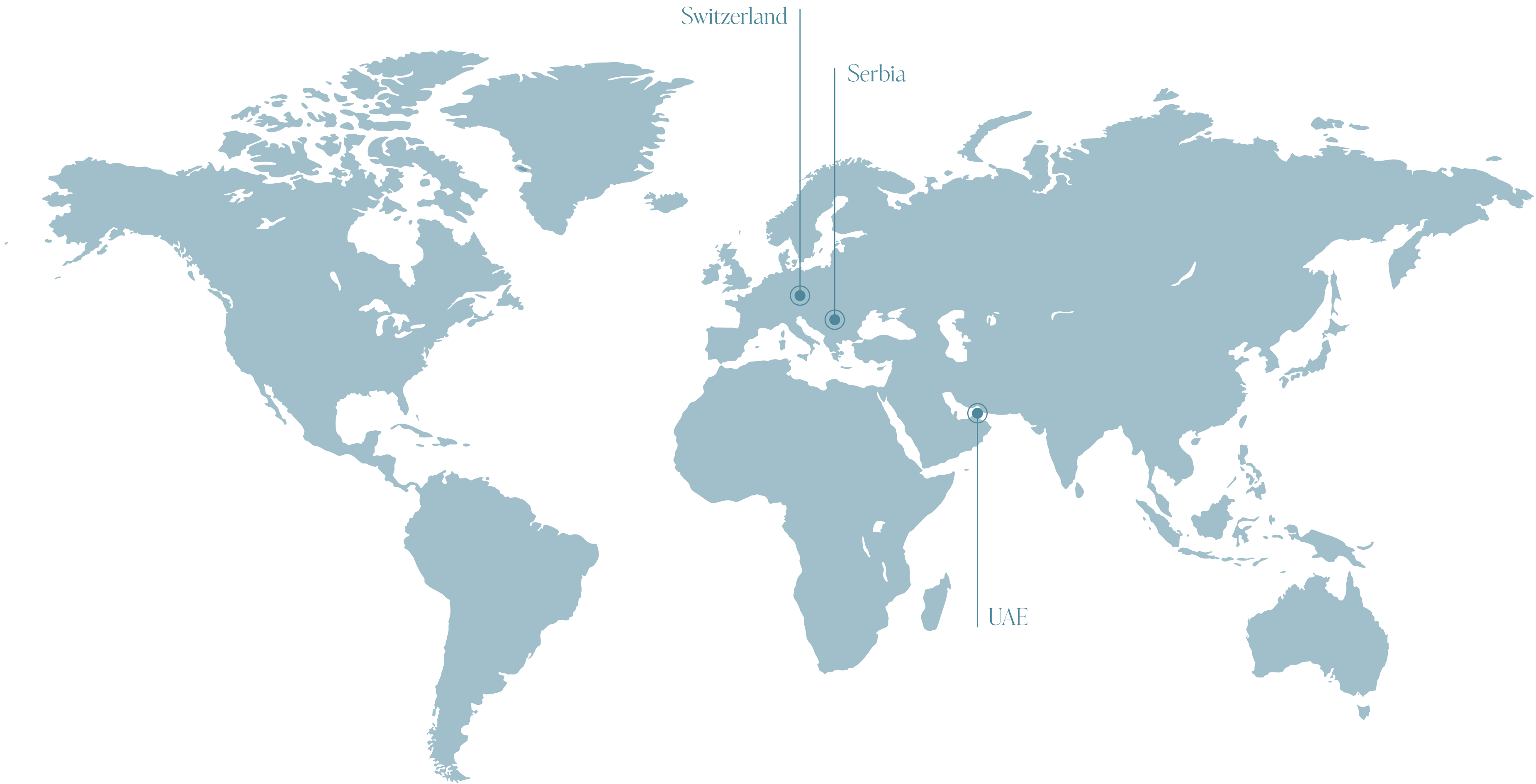
With a presence across Switzerland, the UAE, and Serbia, DHG brings a full-scope development philosophy to life: building premium residences defined by Swiss excellence, modern functionality, and timeless beauty.

www.dhg.ch



Swiss Legacy Reaching International Horizons

With more than 300 successfully completed projects in Europe, spanning over 2.5 million square meters, DHG brings Swiss quality and superior craftsmanship to the UAE real estate market, developing properties designed for the future.



Building the Future, Backed by 30 Years of Excellence

Rooted in decades of expertise, we build with sustainability in mind, and deliver projects that stand as a testament to reliability and trust.

3
Countries

30
Years of Business

300+
Completed Projects

2.5M m²
Delivered Space

1,800+
Units in Development

800M \$
New Projects Value

HELVETIA

M A R I N E

THIS BROCHURE IS INTENDED FOR GENERAL MARKETING PURPOSES ONLY AND DOES NOT CONSTITUTE A LEGAL OFFER OR BINDING COMMITMENT BY THE DEVELOPER. ALL RENDERINGS, IMAGES, LAYOUTS, AND DESCRIPTIONS ARE ARTISTIC IMPRESSIONS AND CONCEPTUAL REPRESENTATIONS THAT MAY NOT REFLECT THE FINAL DELIVERED PRODUCT. THE DEVELOPER RESERVES THE RIGHT TO MAKE CHANGES TO THE DESIGN, SPECIFICATIONS, AND FEATURES IN ACCORDANCE WITH RERA AND DLD REGULATIONS. PROSPECTIVE BUYERS SHOULD REFER TO THE OFFICIAL DOCUMENTATION AND SALE AND PURCHASE AGREEMENT FOR ACCURATE AND ENFORCEABLE INFORMATION.