



OXFORD
COVE
by IMAN

IMAN
DEVELOPERS

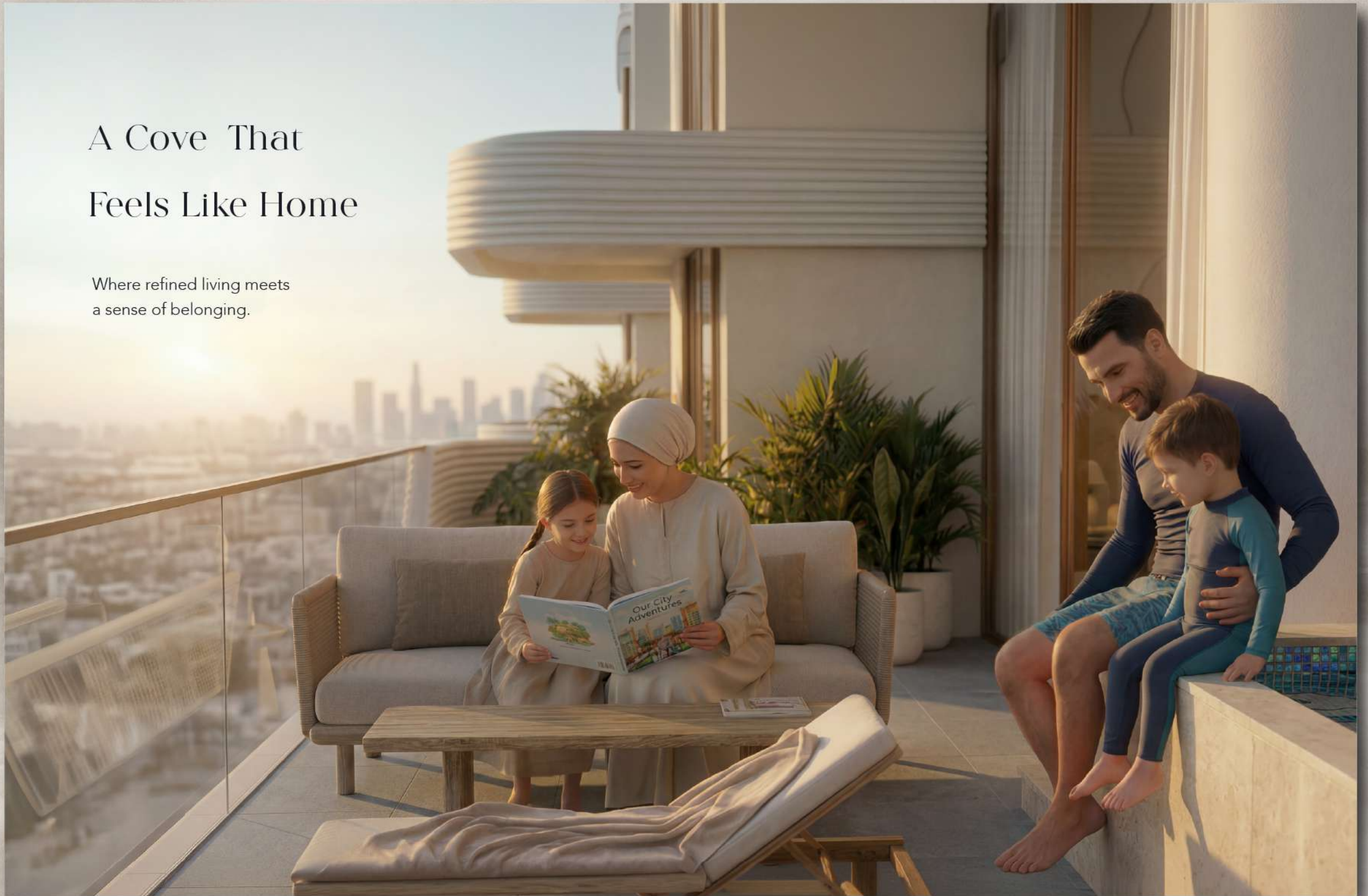


Nature Shaped Luxury

Flowing architectural curves inspired by nature

A Cove That Feels Like Home

Where refined living meets
a sense of belonging.



01 **2016**
OXFORD VILLAS

02 **2017**
OXFORD RESIDENCES

03 **2019**
OXFORD RESIDENCES 2

04 **2021**
OXFORD BOULEVARD

05 **2022**
OXFORD 212

06 **2022**
OXFORD TERRACES

07 **2022**
OXFORD TERRACES 2

08 **2022**
THE GROVE

09 **2023**
OXFORD GARDENS

10 **2023**
10 OXFORD

11 **2023**
GARDENS 2

12 **2024**
ONE PARK CENTRAL

13 **2024**
ONE SKY PARK

14 **2024**
ONE PARK SQUARE

15 **2025**
15 CASCADE

16 **2025**
SIERRA

Iman Developers
Crafting timeless
spaces
Since 2016



JVC: The Urban Sanctuary

Jumeirah Village Circle (JVC) offers a refined balance of community living and modern convenience, positioning it as one of Dubai's most desirable residential neighborhoods. Surrounded by landscaped parks, reputable schools, and leading medical facilities, JVC provides all the essentials for a balanced and elevated lifestyle. Its strategic proximity to major motorways ensures smooth connectivity across the city.

Evolving into a well-established destination, JVC combines contemporary infrastructure with a welcoming, family-oriented environment. For discerning homebuyers, this vibrant community presents an ideal choice — offering a strong sense of belonging alongside a premium investment opportunity within Dubai's dynamic real estate landscape.

A Sheltered Cove in the Heart of the City

17min

Bluewaters
Island

18min

Expo
City

20min

Palm
Jumeirah

20min

Mall of the
Emirates

25min

Dubai
Mall

30min

Al Maktoum
Intl Airport

30min

Dubai Intl
Airport
(DXB)

36min

Palm
Jebel Ali



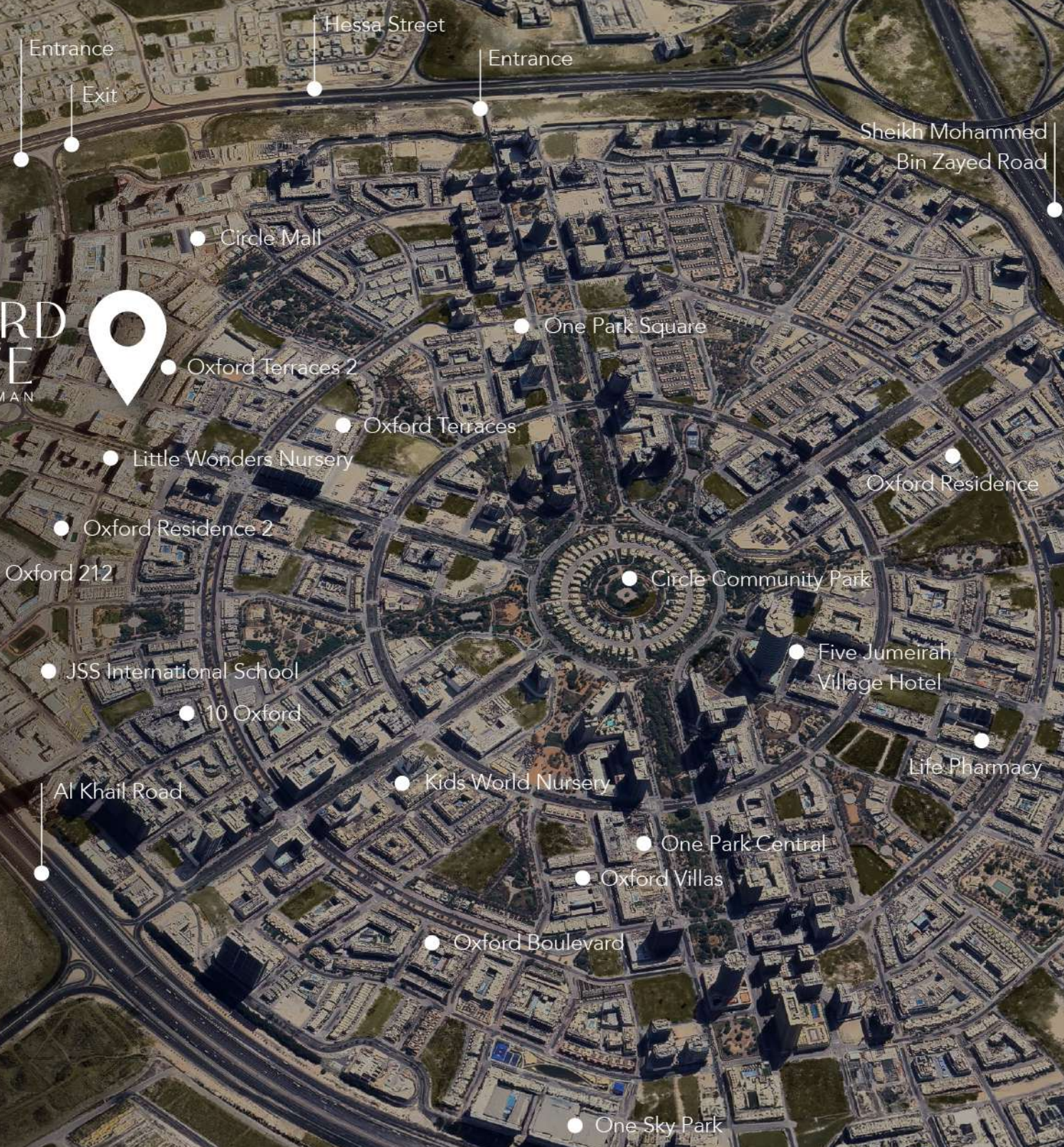
A Connected Community in JVC

Set within Jumeirah Village Circle, Oxford Cove is part of a well-established district defined by balance, accessibility, and everyday ease.

JVC brings together parks, Circle Mall, schools, hotels, and essential retail, all within close reach. Direct connections via Al Khail Road and Hessa Street ensure seamless access across the city.

Within this wider fabric, multiple developments by Iman Developers contribute to the evolving residential character of the community.

Oxford Cove sits within this connected setting — offering the calm of a familiar neighborhood with the advantage of city-wide connectivity.



The Oxford Series

A legacy shaped through design



OXFORD VILLAS



OXFORD RESIDENCES



OXFORD RESIDENCES 2



OXFORD BOULEVARD



OXFORD 212



OXFORD TERRACES




OXFORD TERRACES 2



OXFORD GARDENS



10 OXFORD



The Art of Living.
Curved to
Perfection





Building Configuration

Units Breakdown

247

Residential
Apartment

06

Retail

Number of Floors

B + G + P + 5

Completion Date

Q1 2029



5th Floor

30M Infinity Pool, BBQ Area,
Fitness Center, Meditation Deck,
Outdoor Activity Area, Jacuzzi, Leisure Deck

4th floor

Corner Duplex with Plunge Pool

1st Floor

38M Leisure Pool, Kid's Pool,
Splash Pad, Outdoor Kid's Play Area,
Pool Deck Seating, Outdoor Dining

Podium

Clubhouse,
Indoor Kid's Play Area

Ground Floor

Double Height Entrance Lobby,
Retail Units, Ev-Parking, Parking Entrance & Exit

Residential Collection

Number of Units

Retail	:	6 Units
Studio	:	109 Units
1 Bedroom	:	68 Units
1 Bed with Study	:	30 Units
2 Bedroom	:	21 Units
2 Bed with Study	:	15 Units
2 Bed Duplex with Pool	:	4 Units

Starting Unit Sizes

Retail	:	From 680 Sq.ft
Studio	:	From 388 Sq.ft
1 Bedroom	:	From 658 Sq.ft
1 Bed with Study	:	From 741 Sq.ft
2 Bedroom	:	From 1061 Sq.ft
2 Bed with Study	:	From 1041 Sq.ft
2 Bed Duplex with Pool	:	From 2159 Sq.ft





Exceptional Amenities



38M LEISURE POOL



KIDS POOL



KID'S SPLASH PAD



OUTDOOR KID'S
PLAY AREA



INDOOR KID'S
PLAY AREA



OUTDOOR
DINING AREA



LEISURE SEATING



CLUBHOUSE



FITNESS
CENTER



MEDITATION DECK



OUTDOOR
ACTIVITY AREA



BBQ LOUNGE



JACUZZI



30M ROOFTOP
INFINITY POOL

PHOTOGRAPHY BY JIMMY DOEY FOR E&F



OXFORD COVER BY ILMAN DEVELOPERS



NEIGHBOUR

ROAD

PASSAGE

ROAD

OXFORD COVE BY IMAN DEVELOPERS

Ground Floor Amenities

- 1. Double Height Main Lobby
- 2. Lounge Seating Area
- 3. Meeting Zone
- 4. Carpool Vehicle Parking
- 5. Bicycle Parking
- 6. Retail Spaces
- 7. POD Parking

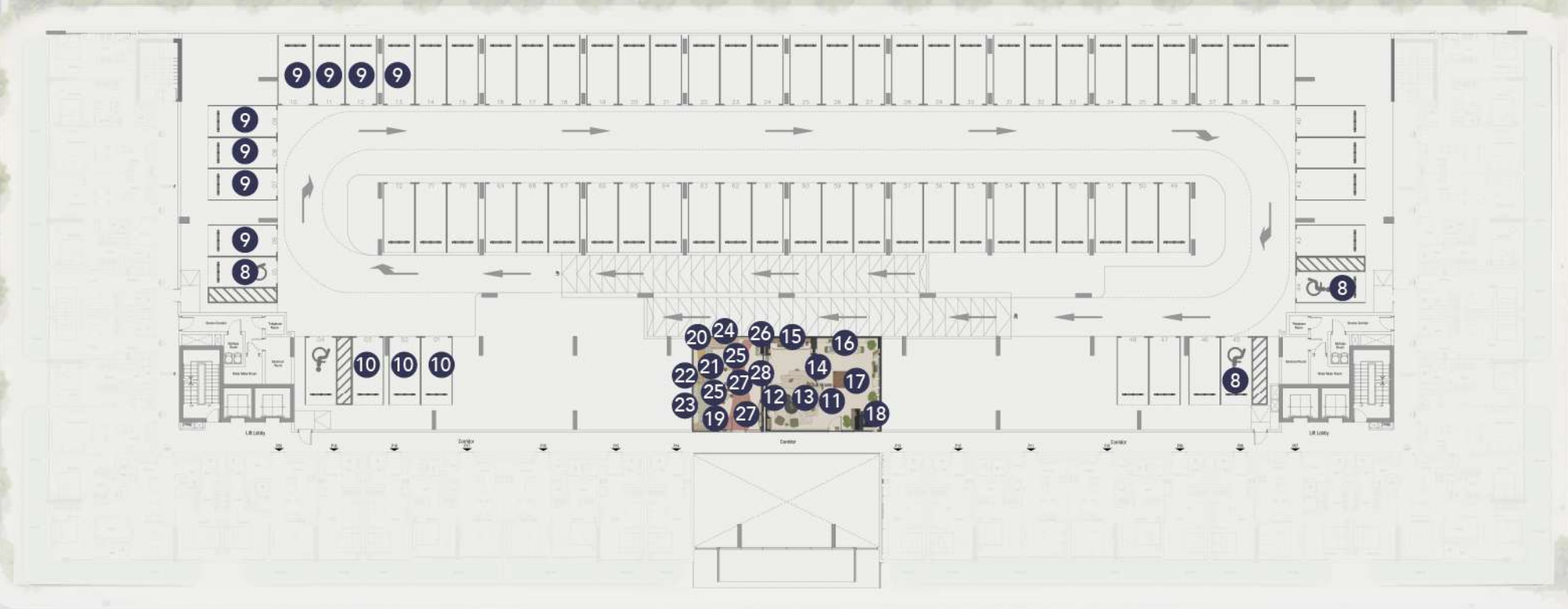


NEIGHBOUR

ROAD

PASSAGE

OXFORD COVE BY IMAN DEVELOPERS



ROAD

P-Floor Amenities

- | | | | | |
|-------------------------------------|------------------------------|---------------------------|-----------------------|------------------|
| 8. POD Parking | 12. TV lounge | 17. Games Lounge | 22. Basketball Zone | 27. Hanging Pods |
| 9. Hybrid Vehicle | 13. Social Relaxation Lounge | 18. Entertainment Arcade | 23. Climbing Wall | 28. Puzzle Wall |
| 10. Low Emitting
Vehicle Parking | 14. Hot Desk Seating Zone | 19. Indoor Kids Play Area | 24. Soft Seating Area | |
| 11. Clubhouse | 15. Refreshment Zone | 20. Adventure Slide | 25. Creative Hub | |
| | 16. Quiet / Reading zone | 21. Ball Pit Landing | 26. Kitchenette | |



NEIGHBOUR

ROAD

PASSAGE

ROAD

First Floor Amenities

- | | |
|----------------------------|--------------------|
| 29. 38M Leisure Pool | 34. Sun Loungers |
| 30. Kids Pool | 35. Outdoor Shower |
| 31. Splash Pad | 36. Outdoor Dining |
| 32. Outdoor Kids Play Area | 37. Pool Deck |
| 33. Outdoor Seating | 38. Walkway |



NEIGHBOUR

ROAD

PASSAGE



ROAD

Rooftop Floor Amenities

39. 30M Rooftop Infinity Pool

40. Jacuzzi

41. Sun Loungers

42. Reading Zone

43. Outdoor Seating

44. Barbeque Area

45. Outdoor Chess

46. Meditation Deck

47. Fintess Center

48. Male/Female Changing

Rooms & Shower Area

49. People of Determination Toilet

50. Strength Zone

51. Functional Training Track

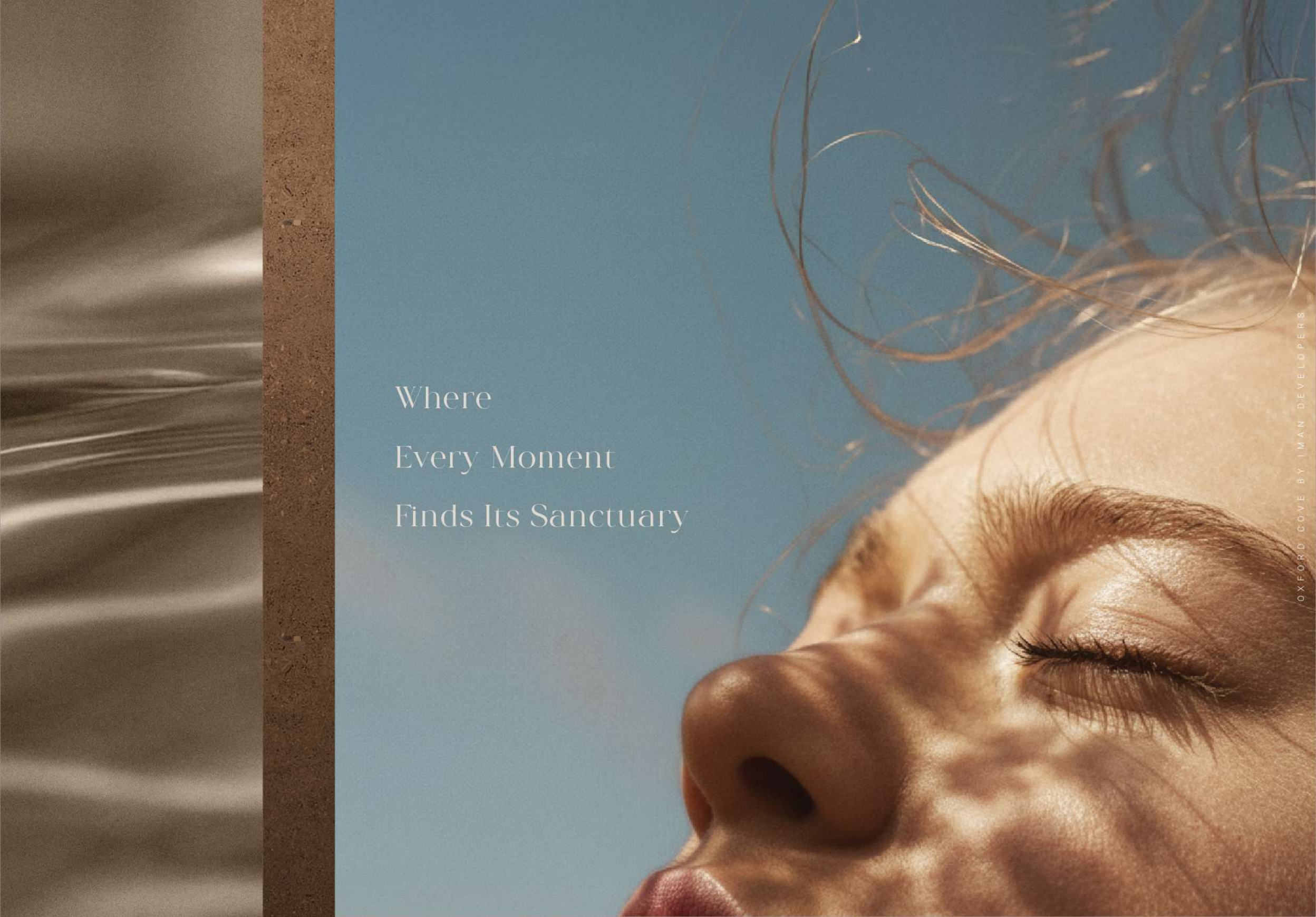
52. Cardio Deck

53. Endurance Hub

54. Free Weights Studio

55. Recovery Zone





Where
Every Moment
Finds Its Sanctuary



COFFEE SHOP

MIAMI IMAN



Grand Drive



A Calm Beginning
to every arrival

OXFORD COVE BY IMAN DEVELOPERS

Double Height Entrance Lobby





Double Height Entrance Lobby



Where life
Finds its
Natural rhythm

At Oxford Cove, amenities are shaped as an extension of everyday living — open, calm, and intuitively placed to support moments of rest, movement, and connection.



OXFORD COVE BY IMAN DEVELOPERS

38M Leisure Pool



OXFORD CITY HUMAN DEVELOPERS

Kids Pool



OXFORD COVE BY IMAN DEVELOPERS

Outdoor Kids Play Area



Indoor Kids Play Area





Fitness Center

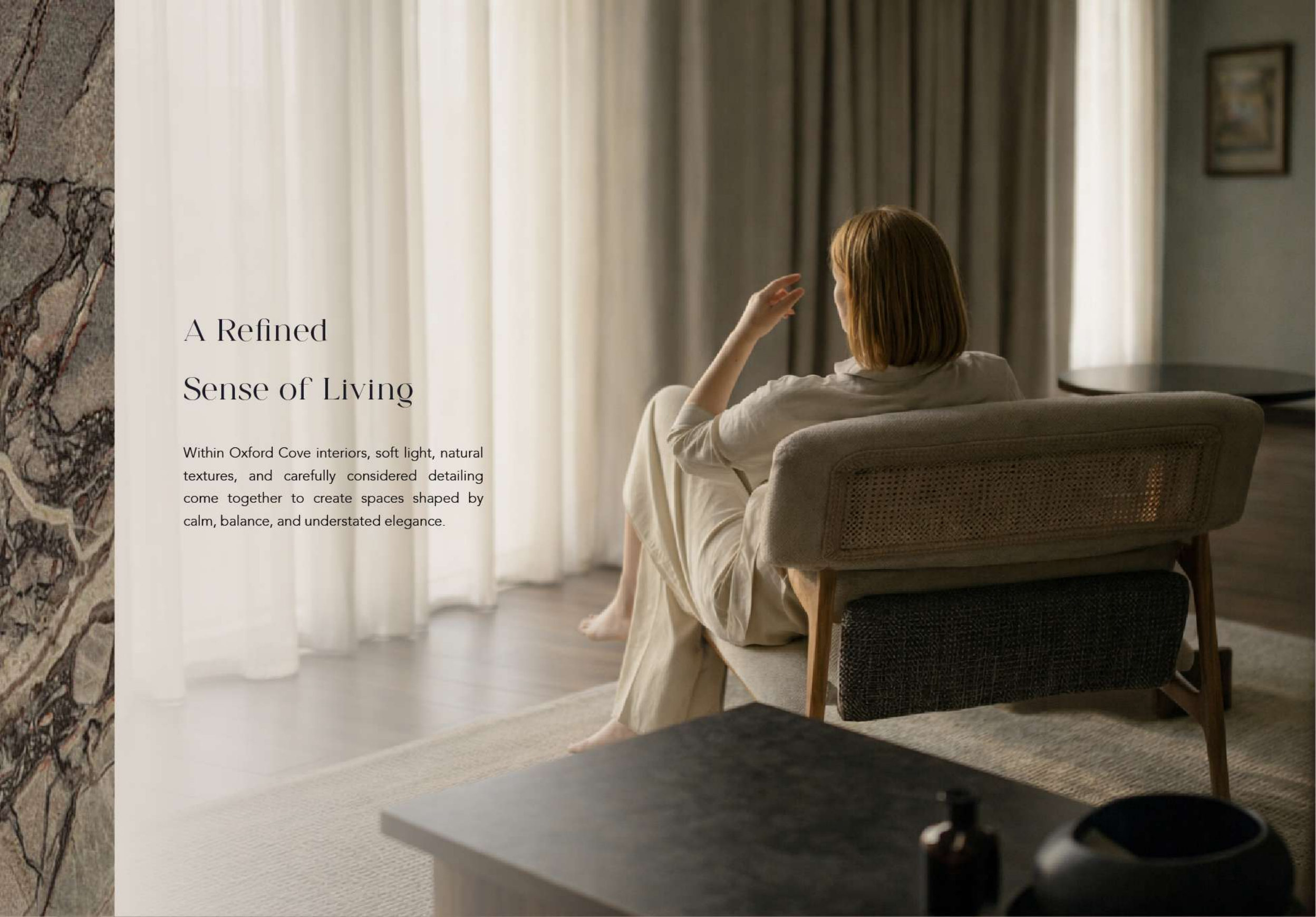


BBQ Area



30M Rooftop Infinity Pool

PHOTO BY TAN DEE ELLERS

A woman with short blonde hair is sitting in a modern, light-colored armchair with a cane backrest. She is wearing a light-colored, long-sleeved top and trousers, and is barefoot. She is looking out a window with sheer white curtains. The room is dimly lit, with soft light coming from the window. In the foreground, there is a dark, low coffee table with a few items on it. The overall atmosphere is calm and understated.

A Refined Sense of Living

Within Oxford Cove interiors, soft light, natural textures, and carefully considered detailing come together to create spaces shaped by calm, balance, and understated elegance.


A Space
That Feels
Like Home

Ease and comfort come together in this living area — where natural light, soft finishes, and a sense of openness create a place you'll always want to return to.





The Living Room



Where
Life Unfolds
Naturally

Thoughtfully arranged, the kitchen and dining space support both daily routines and shared moments — feeling welcoming, intuitive, and effortlessly connected.



The Dining Area

OXFORD COVE BY HUMAN DEVELOPERS



The Kitchen



A Space
to Rest
and Unwind

Soft tones, natural light, and a sense of calm
come together to create a bedroom that feels
peaceful, comfortable, and effortlessly inviting



The Bedroom



Where Comfort Feels Effortless

Crafted with thoughtful design and refined finishes, the bathroom offers a serene atmosphere that transforms everyday routines into moments of comfort and relaxation.





The Bathroom

OXFORD COVE

by IMAN

Typical Unit Plans

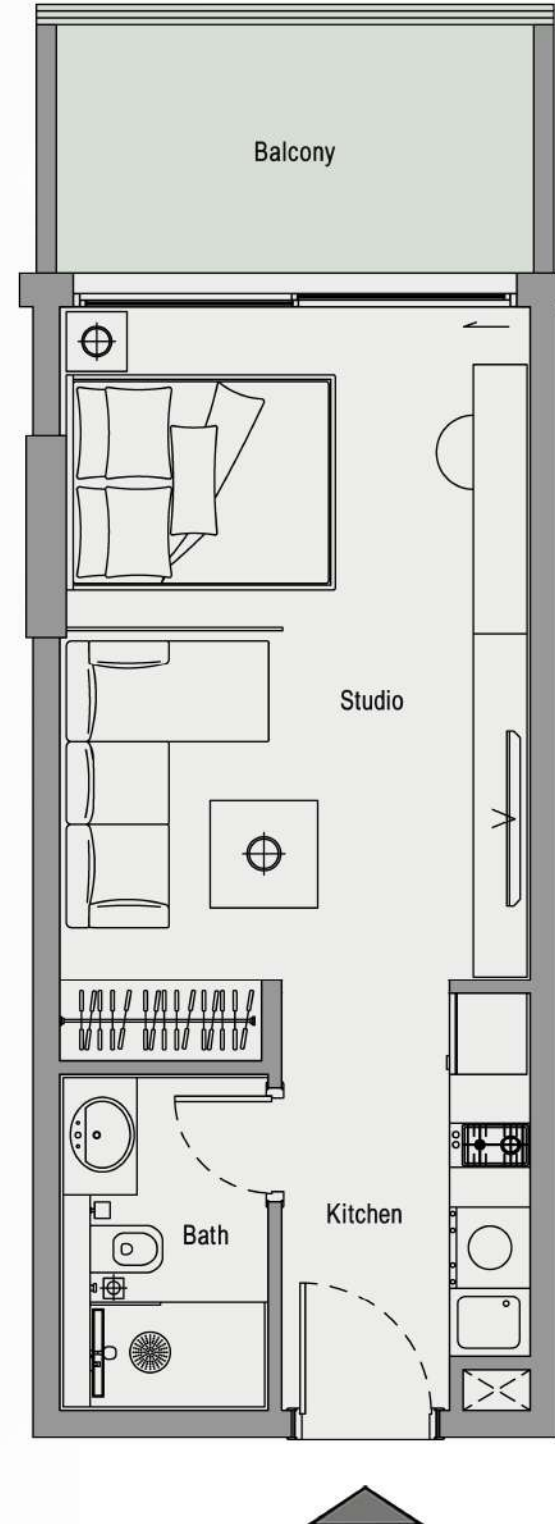


Studio

SUITE AREA 330 SQFT

BALCONY AREA 84 SQFT

TOTAL AREA 414 SQFT

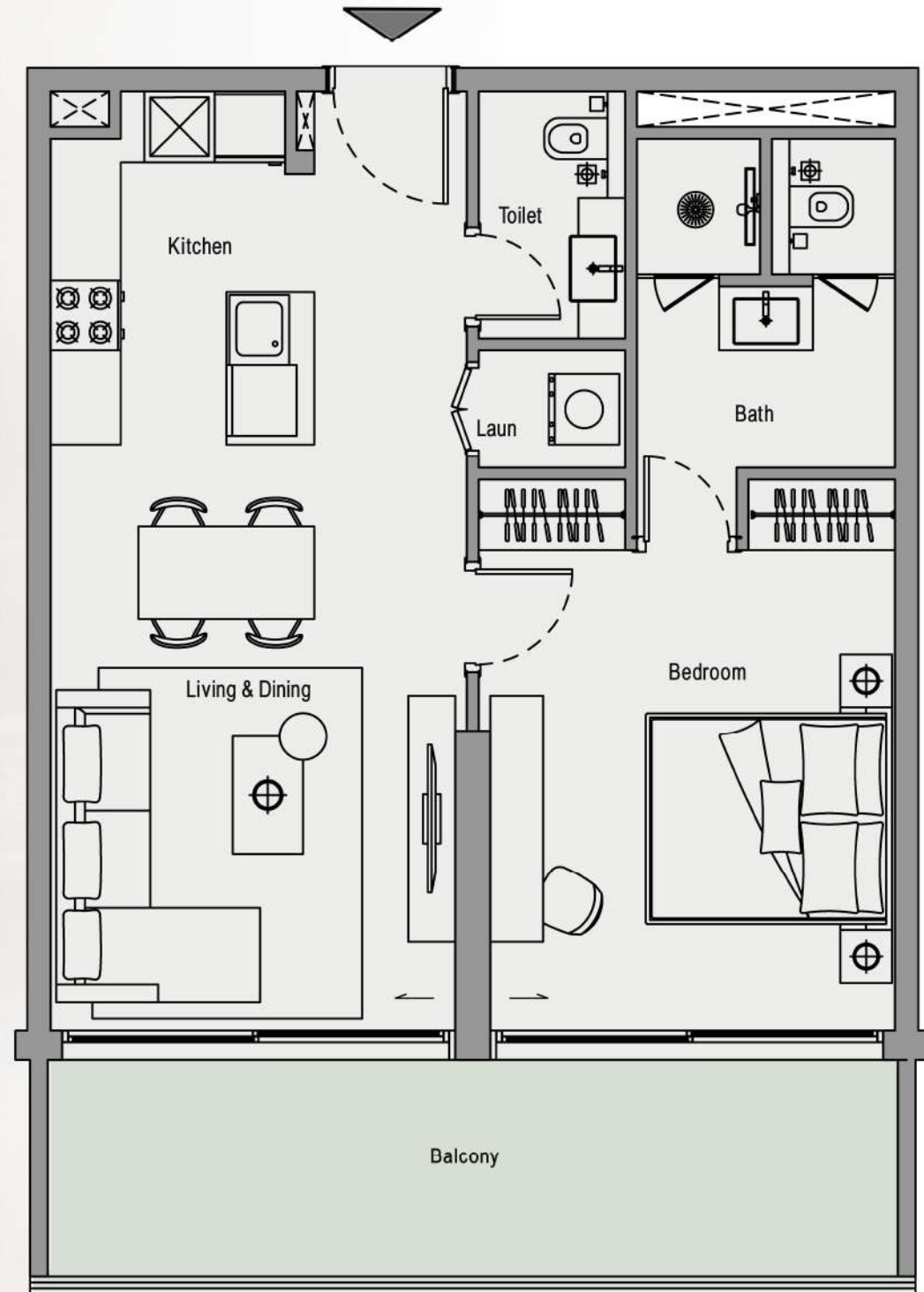


1 Bedroom

SUITE AREA 635 SQFT

BALCONY AREA 169 SQFT

TOTAL AREA 804 SQFT



1 Bed with Study

SUITE AREA 659 SQFT

BALCONY AREA 82 SQFT

TOTAL AREA 741 SQFT

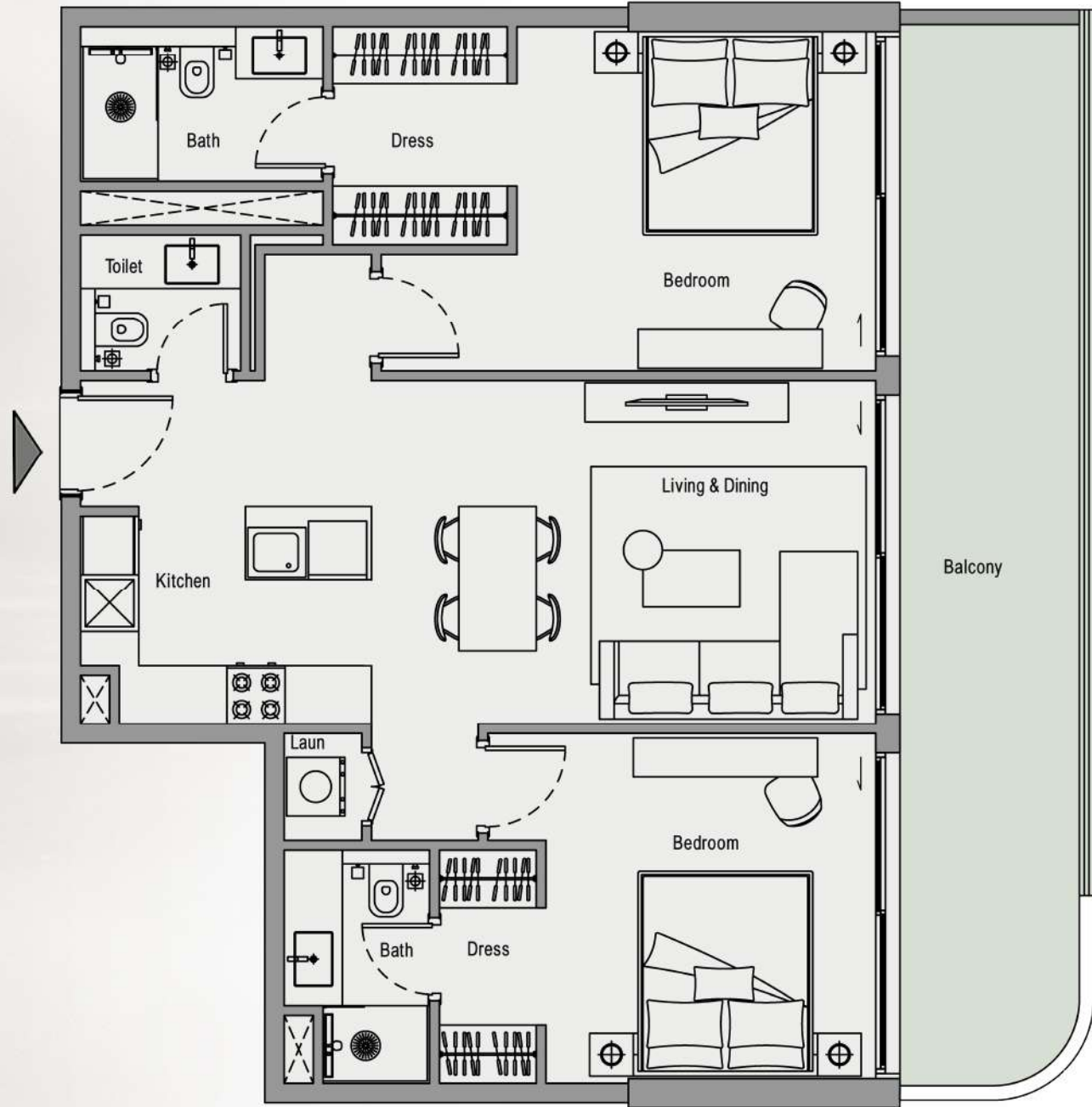


2 Bedroom

SUITE AREA 895 SQFT

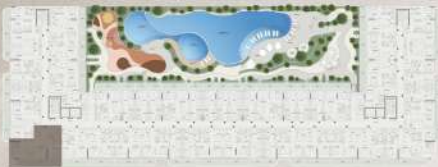
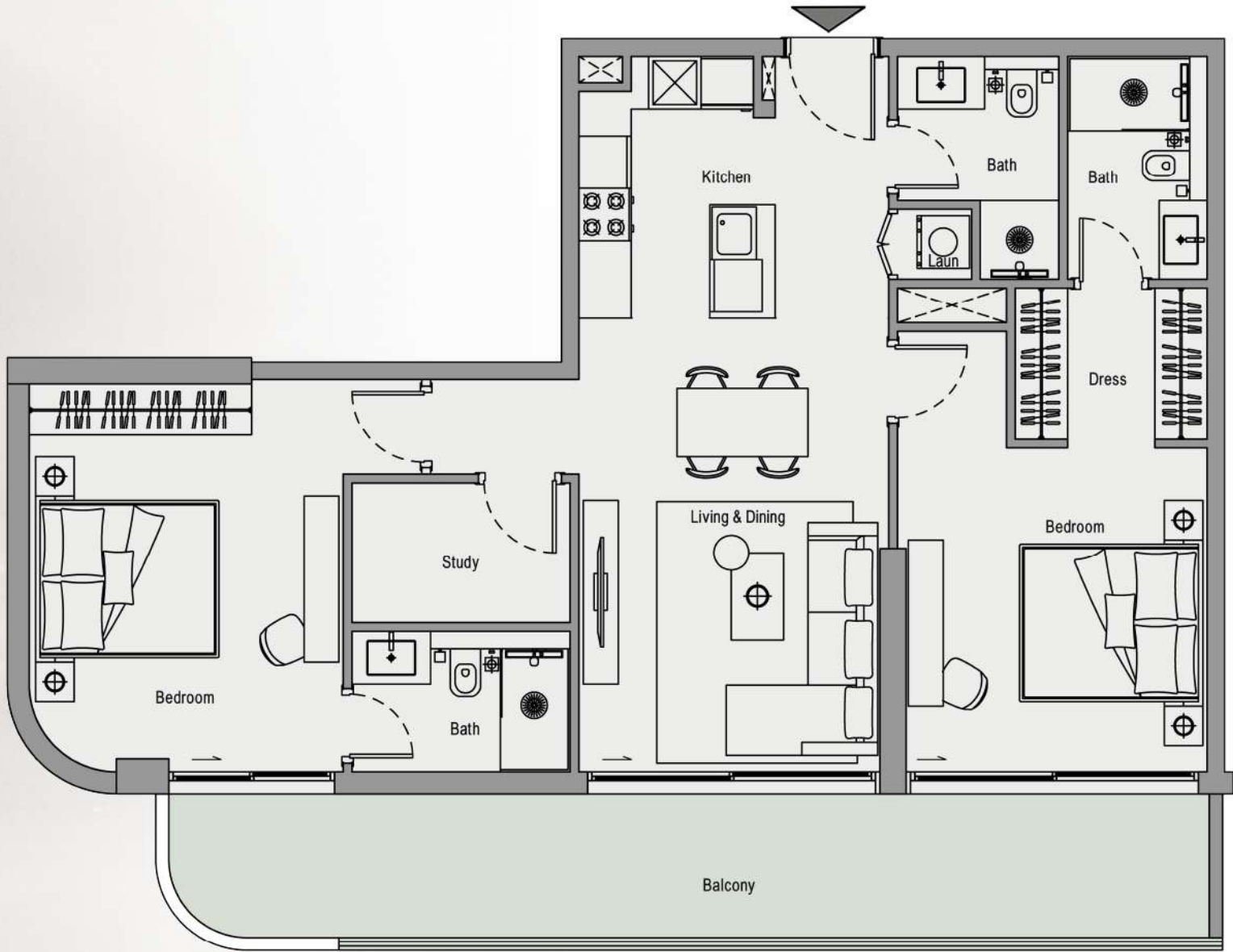
BALCONY AREA 251 SQFT

TOTAL AREA 1146 SQFT



2 Bed with Study

SUITE AREA	972 SQFT
BALCONY AREA	245 SQFT
TOTAL AREA	1217 SQFT



Disclaimer: all pictures, plans, layouts information, data and details included in this brochure are indicative only and may change at any time up to the final 'as built status in accordance with the final designs of the project, regulatory approvals and planning permissions'



2 Bed Duplex with Pool

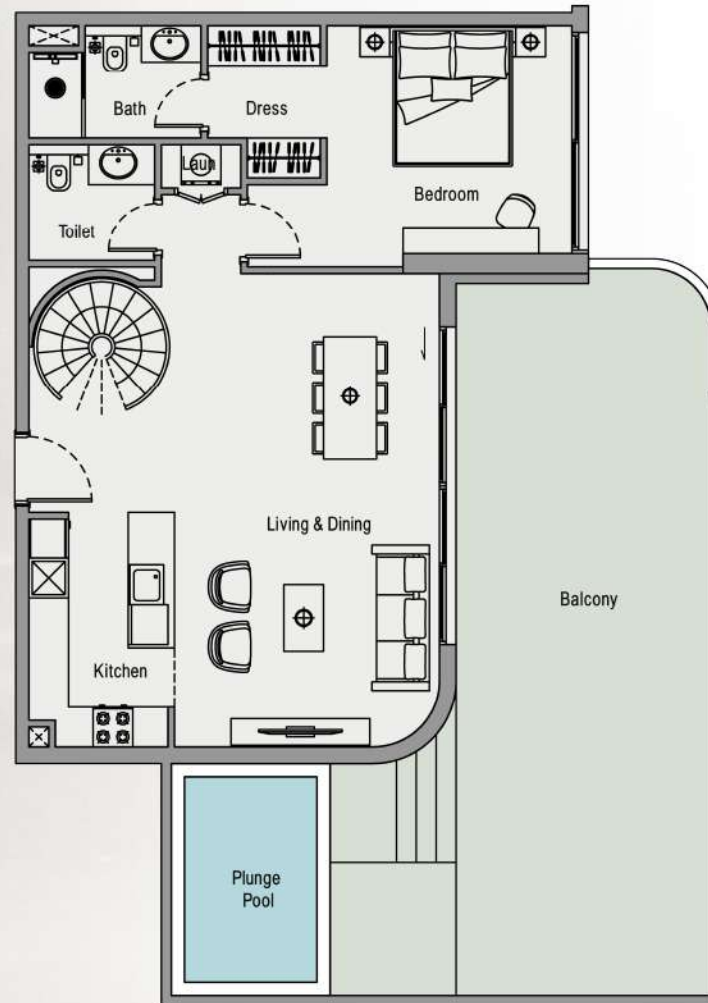
SUITE AREA 1411 SQFT

BALCONY AREA 748 SQFT

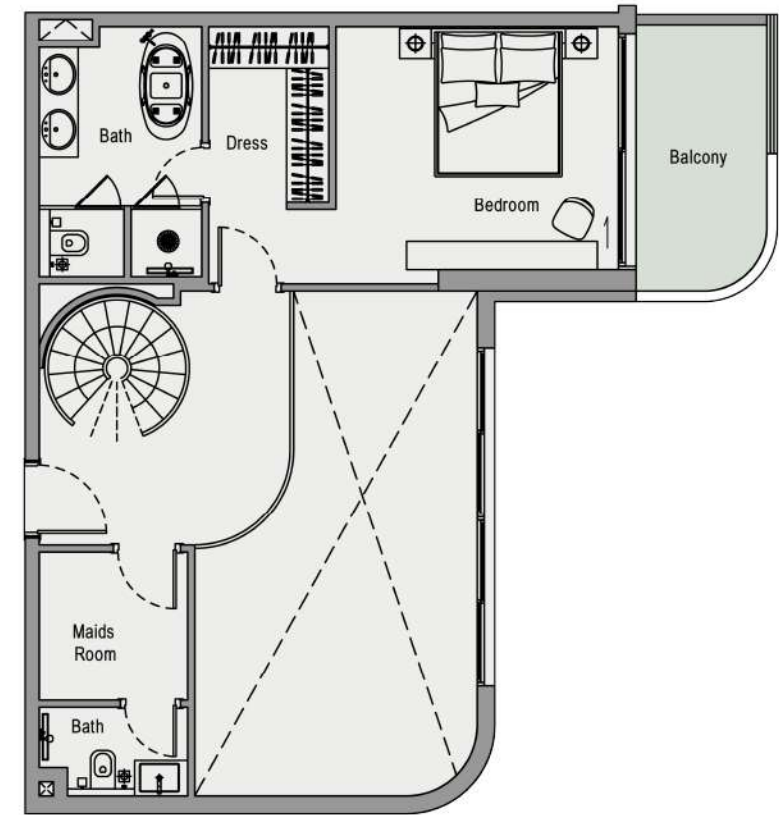
TOTAL AREA 2159 SQFT



LOWER FLOOR



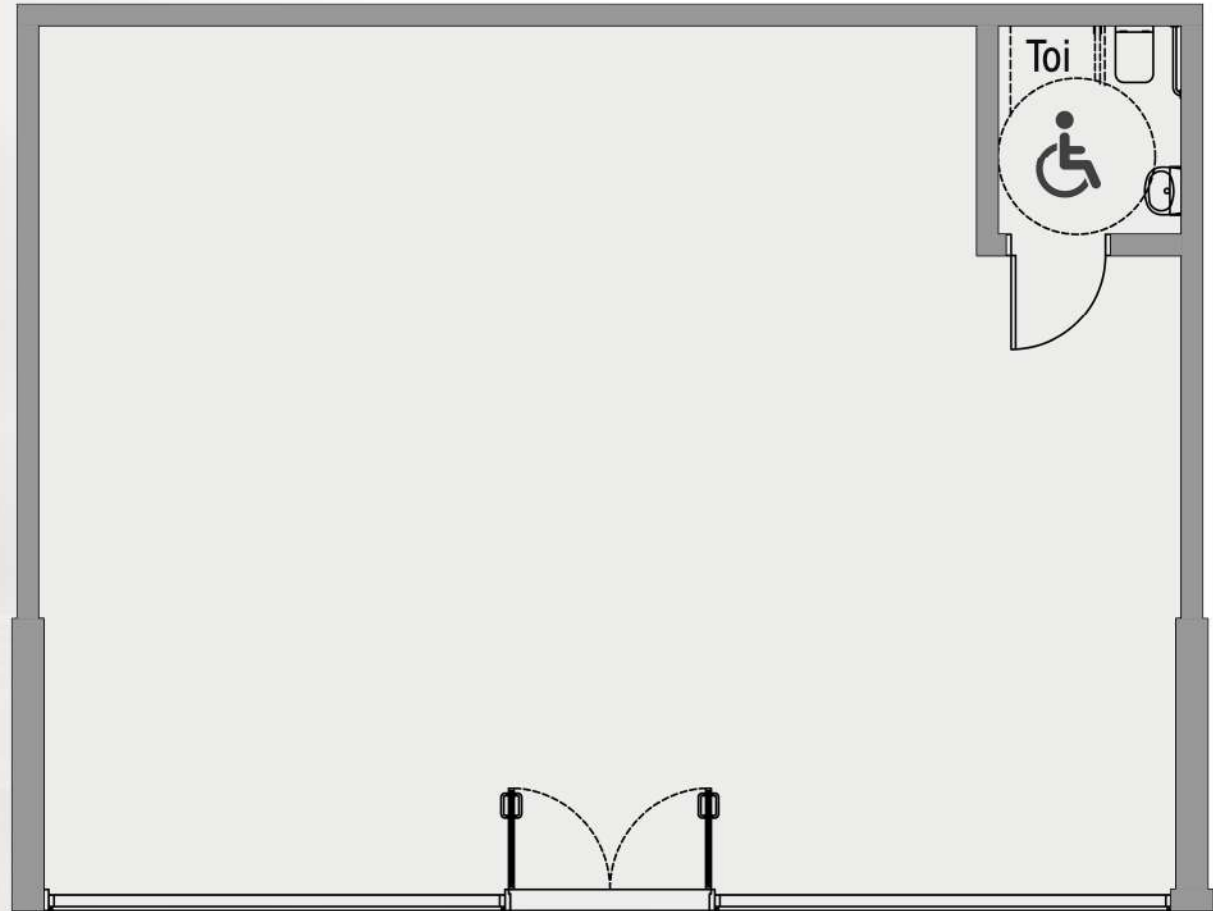
UPPER FLOOR



Retail

SUITE AREA 1019 SQFT

TOTAL AREA 1019 SQFT





FOR COVE-8

STARTING PRICE

679K

Studio

1.11M

1 Bedroom

1.15M

1 Bed with Study

1.45M

2 Bedroom

1.69M

2 Bed with Study

2.24M

2 Bed Duplex with Pool

2.1M

Retail Units

PAYMENT PLAN

20%

On Booking

10%

In 90 days

10%

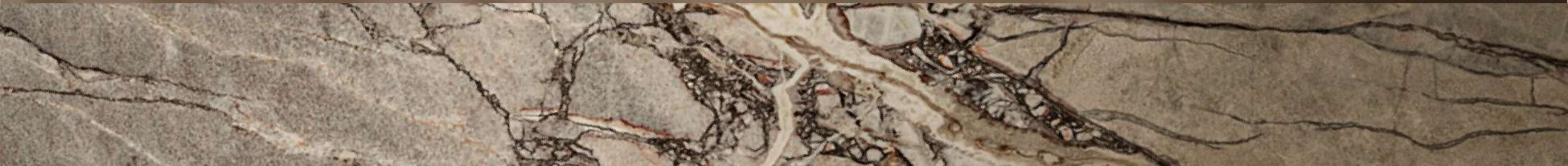
On 20% Construction
Completion

10%

On 40% Construction
Completion

50%

On Project
Completion



RESIDENTIAL
PRE-LAUNCH OFFER

4%

Discount

PAYMENT PLAN

40%

During Construction

60%

On Completion

Oxford Cove,
Crafted for You





IMAN
DEVELOPERS