

رايت كابيتال
للتطوير العقاري



RIGHTCAPITAL
REAL ESTATE DEVELOPMENT

Building Wealth, Creating Opportunities

رايت كابيتال
للتطوير العقاري



RIGHTCAPITAL
REAL ESTATE DEVELOPMENT

Building Wealth, Creating Opportunities



LOCATION

Just off the highway, the Al Shamkha neighbourhood is the perfect base for a calm, convenient and contemporary lifestyle. It offers easy access to the bright lights and bustle of Abu Dhabi, thanks to a convenient network of roads (Al Mafrq, Al Ain, Mohammed Bin Rashid Street and Suwaihan). The drive to Abu Dhabi International Airport is also swift and scenic, so whether you're travelling for business or pleasure, you'll arrive at your terminal in a matter of minutes.

الريمان ALREEMAN



Blending modernity with tradition, Alreeman celebrates the best of the UAE and beyond. Open to all nationalities, it is the blueprint; the foundations; the very beginnings of the home you've always dreamed of. Also. There are exciting opportunities for investors, with a variety of land available for commercial builds.

Alreeman community offers a choice of amenities designed or convenient, sustainable living. All to be enjoyed surrounded by friends and loved ones who share your values and lifestyle choices.



COMPREHENSIVE COMMUNITY FACILITIES ON YOUR DOORSTEP

A range of diverse community facilities distributed throughout the development - all within walking distance





UNIQUE SELLING POINTS

- Affordable apartment plots starting from only AED 4.68 million with a 10% down payment and an easy payment plan.
- Investment zone status open for both UAE and international investors (all nationalities).
- First opportunity to invest in Al Shamkha area for international investors.
- Opportunity for significant investment yields.
- GFA ranges from 4,500 to 7,000 sqm gross floor area, with allowable heights ranging from G+5 to G+7.
- First investment zone in Abu Dhabi targeting low to mid income developments.
- Integrated master planned community, providing residents with all amenities, including schools, retail and mosque.
- 10 minutes from Abu Dhabi Airport and other major employment nodes.
- Apartment plots with surface parking is permitted, basement parking is not mandatory.
- Plots fully-serviced by all infrastructure and public realm.
- No district cooling and ample community services.



RIGHT CAPITAL **رايت كاپيتال**

Right Capital One is the first residential building developed by Right Capital Real Estate Development L.L.C., setting new standards of modern living in the heart of Alreeman, one of Aldar's prestigious new developments. Designed for comfort, convenience, and elegance, Right Capital One offers a refined lifestyle in a prime location within Al Shamkha, Abu Dhabi.

Prime Location & Connectivity

Nestled just off the highway, Al Shamkha provides seamless connectivity to key destinations in Abu Dhabi. Residents enjoy easy access to Al Mafraq, Al Ain, Mohammed Bin Rashid Street, and Suwaihan Road, ensuring a smooth commute across the city. Additionally, Abu Dhabi International Airport is just minutes away, making travel effortless.

Alreeman – A Vision of Modern Living

Alreeman seamlessly blends tradition and modernity, offering a vibrant community open to all nationalities. It is an investment hotspot with commercial land opportunities, as well as thoughtfully designed amenities for sustainable and comfortable living.

- Exclusive Living at Right Capital One
- Right Capital One stands in a strategic location within Alreeman, featuring:
- Uninterrupted Open Views – Overlooking a main public park
- Proximity to Key Facilities – Adjacent to a mosque and service spaces
- Excellent Road Access – Facing a major roadway through the neighborhood
- Premium Amenities – Private parking and a swimming pool
- Spacious & Luxurious Residences – Featuring high-end finishes and top-tier materials

Right Capital One is more than a home—it's a lifestyle of comfort, exclusivity, and elegance, tailored for those who seek the best in modern living.



Right Capital One is strategically located within Alreeman, offering a prime position with open views of a main public park, direct access to a major roadway, and proximity to essential amenities like a mosque and service spaces. With private parking and a swimming pool, it ensures a luxurious and convenient lifestyle

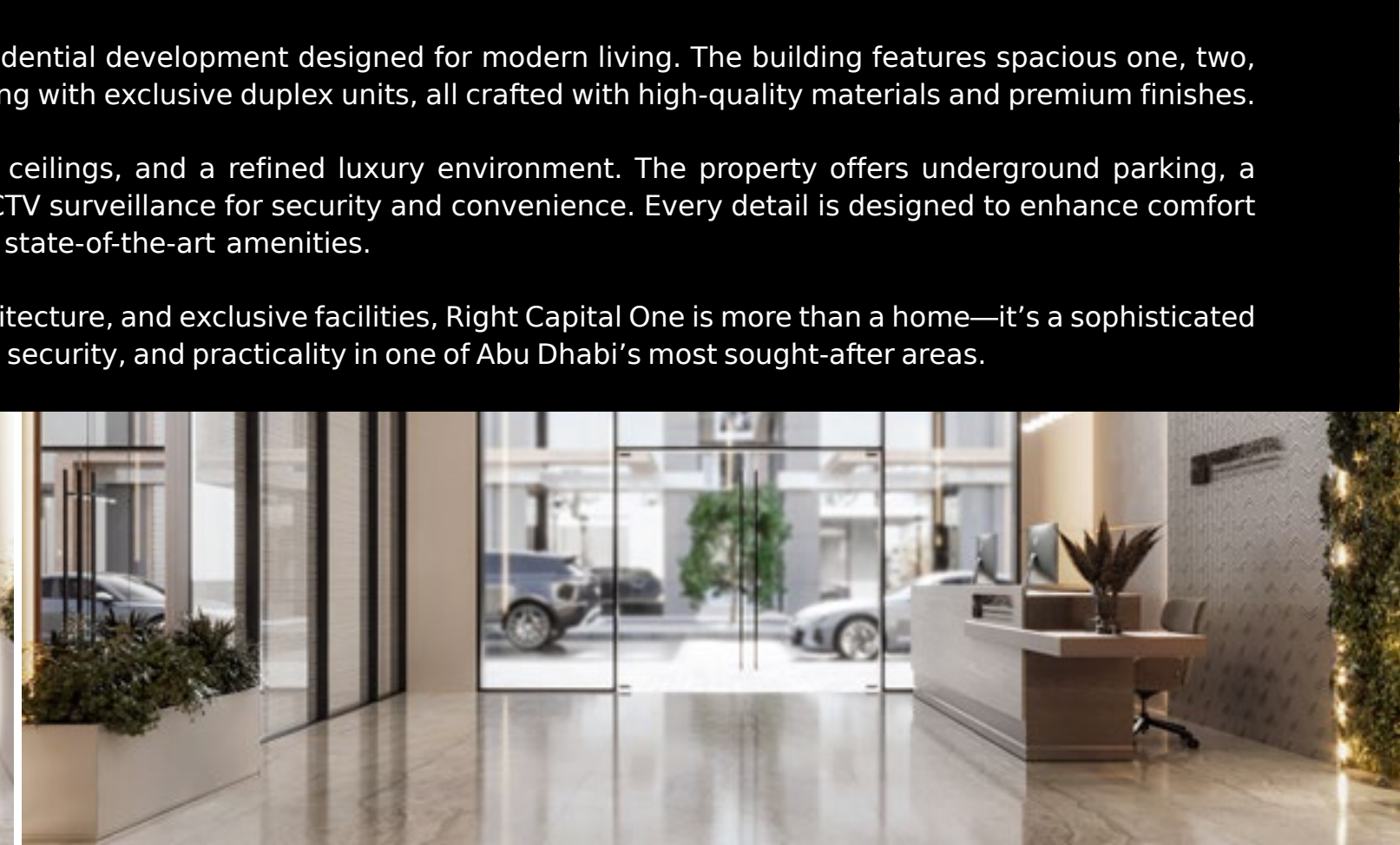


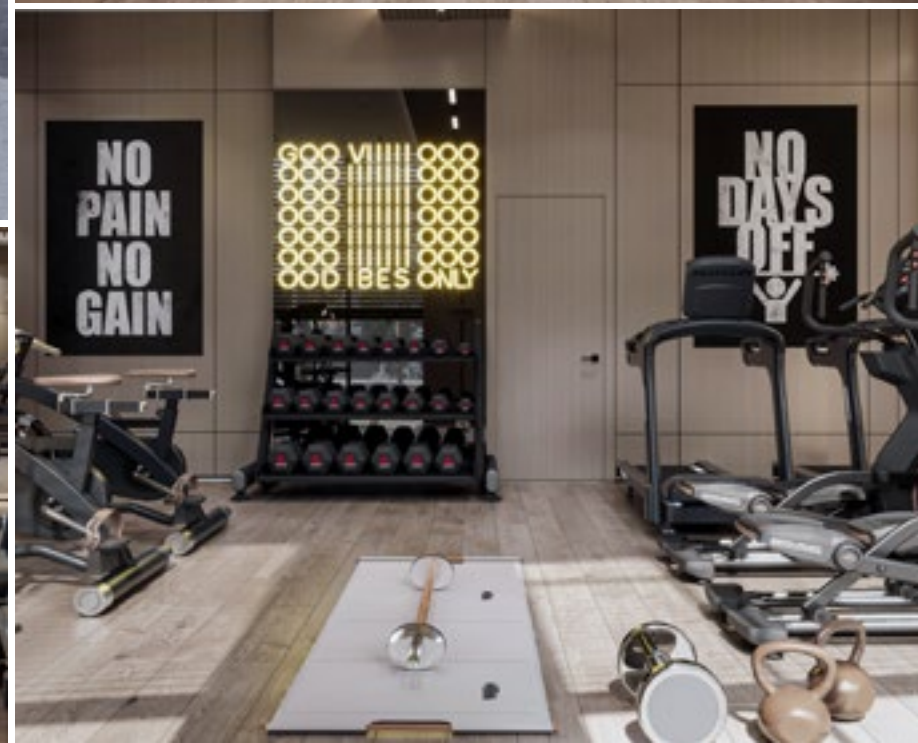
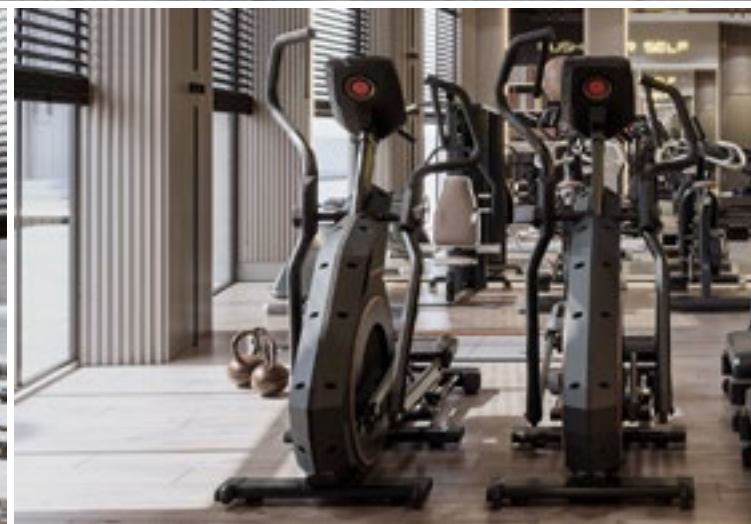
RIGHTCAPITAL 

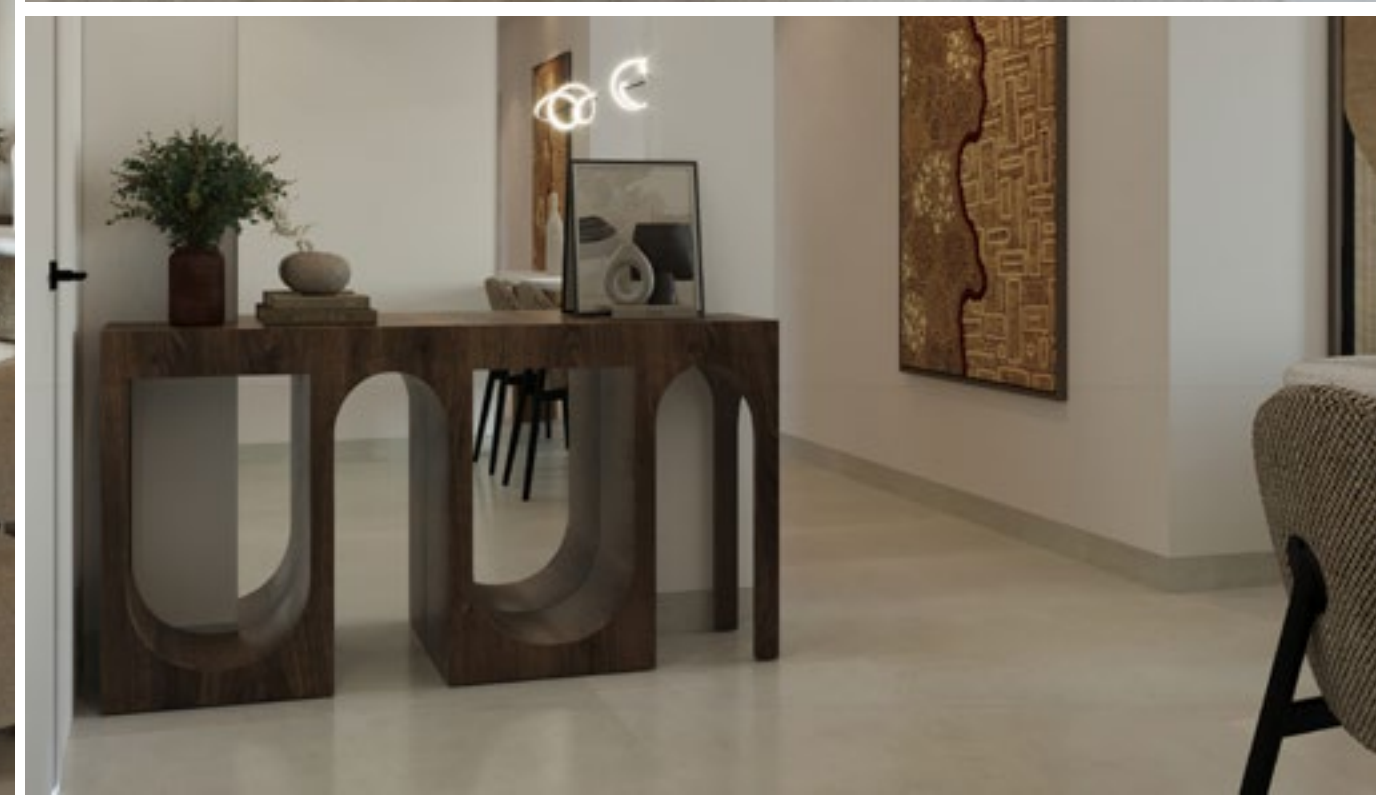
Right Capital One is a luxurious residential development designed for modern living. The building features spacious one, two, and three-bedroom apartments, along with exclusive duplex units, all crafted with high-quality materials and premium finishes.

Residents enjoy large spaces, high ceilings, and a refined luxury environment. The property offers underground parking, a private swimming pool, and 24/7 CCTV surveillance for security and convenience. Every detail is designed to enhance comfort and style, from elegant interiors to state-of-the-art amenities.

With its prime location, modern architecture, and exclusive facilities, Right Capital One is more than a home—it's a sophisticated living experience that blends luxury, security, and practicality in one of Abu Dhabi's most sought-after areas.











UNIT DETAIL		بيانات الوحدة	
UNIT OWNER	Right Capital Real Estate Development Construction/Establishment	مالك الوحدة	مؤسسة رائت كابيتال للتطوير العقاري للتأسيسات
UNIT NO:	901 (FLAT)	رقم الوحدة:	901 (شقة)
SUITE AREA (ADUAMS2-U)	121.09 SQ.M (1,303.40 SQ.FT)	مساحة الوحدة (ADUAMS2-U)	
BALCONY AREA (Ua)	75.54 SQ.M (813.11 SQ.FT)	مساحة البلكونة (Ua)	
TOTAL UNIT AREA (ADUAI)	196.63 SQ.M (2,116.51 SQ.FT)	المساحة الكلية (ADUAI)	

Legend:

- Unit Boundary
- ADUAMS2
- Ua (Balcony / Terrace)
- Uc (Wards and Shafts)

GENERAL NOTES:

- This plan is prepared by a registered surveyor, and the Total Unit Area specified in this Unit Site Plan is calculated according to Abu Dhabi Unit Area 1 (ADUAI), as specified in the Abu Dhabi Property Measurement Standards (ADPMS).
- The architectural detail in this plan is based on Detail Design drawings, and final As-Built conditions may vary.
- All architectural details are for illustrative purposes only.
- ADUAI is identified as the Gross Saleable Area.

UNIT DETAIL SCALE: NTS

SITE PLAN
SCALE: 1:500

UNIT LOCATION IN BUILDING
SCALE: NTS

CA = Common Area

FLOOR 01 SCALE: NTS

RIGHT CAPITAL
رئيس كابيتال للتطوير العقاري
REAL ESTATE DEVELOPMENT

PROJECT NO: C70
ZONE: Al Shamsiyah
SECTOR: SH06
USAGE TYPE: COMMERCIAL
TOTAL AREA: 2,304.26 SQ.M (24,802.85 SQ.FT)
مساحة المشروع: 24,802.85 متر مربع / 2,304.26 هكتار

KEY LOCATION

PROJECT NAME: Al Reeman - Phase 1
PREPARED BY: DIGITAL REALITY CORP L.L.C (REF: 2024)
SURVEY STATUS: NO
ISSUED ON: 25/9/2025
BLDG NAME & NO: Right Capital -1
ADM BUILDING NO: 1
SHEET: 1 OF 1

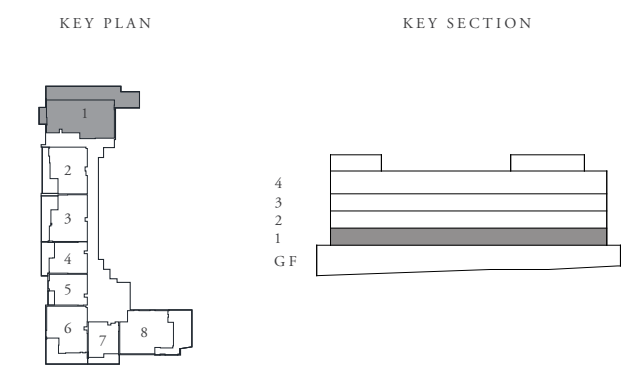
UNIT SITE PLAN
KEY PLAN

LICENSE NO.: 202400097934

RIGHT CAPITAL 1

AL REEMAN LIVING

	LEVEL 01	UNIT 101
SUITE AREA	121.09 SQ.M	1,303.40 SQ.FT
BALCONY AREA	75.54 SQ.M	813.11 SQ.FT
TOTAL AREA	196.63 SQ.M	2,116.51 SQ.FT



FLOOR PLAN 1. All dimensions are in imperial and metric, and measured from finish to finish excluding construction tolerances. 2. All materials, dimensions, and drawings are approximate only. 3. Information is subject to change without notice, at developer's absolute discretion. 4. Actual area may vary from the stated area. 5. Drawings not to scale. 6. All images used are for illustrative purposes only and do not represent the actual size, features, specifications, fittings, and furnishings. 7. The developer reserves the right to make revisions / alterations, at it's absolute discretion, without any liability whatsoever.



UNIT DETAIL		بيانات الوحدة	
UNIT OWNER	Right Capital Real Estate Development Construction Establishment	مالك الوحدة	مؤسسة رائت كابيتال للتطوير العقاري للتأسيسات
UNIT NO:	102 (FLAT)	رقم الوحدة:	102 (شقة)
SUITE AREA (ADUAMS2-U)	81.10 SQ.M (872.95 SQ.FT)	مساحة الوحدة (ADUAMS2-U)	
BALCONY AREA (Ua)	23.26 SQ.M (250.37 SQ.FT)	مساحة التراس (Ua)	
TOTAL UNIT AREA (ADUAT)	104.36 SQ.M (1,123.32 SQ.FT)	المساحة الكلية (ADUAT)	

Legend:

- Unit Boundary
- ADUAMS2
- Ua (Balcony / Terrace)
- Uc (Wards and Shafts)

DM / ADM
ADUAT = ADUAMS2 + Ua + Uc

GENERAL NOTES:

- This plan is prepared by a registered surveyor, and the Total Unit Area specified in this Unit Site Plan is calculated according to the Abu Dhabi Unit Area 1 (ADUATs), as specified in the Abu Dhabi Property Measurement Standards (ADPMS).
- The architectural detail in this plan is based on Detail Design drawings, and final As-Built conditions may vary.
- All architectural details are for illustrative purposes only.
- ADUAT is identified as the Gross Saleable Area.

UNIT DETAIL
SCALE: NTS

SITE PLAN
SCALE: 1:500

UNIT LOCATION IN BUILDING
SCALE: NTS

CA = Common Area

FLOOR 01
SCALE: NTS

RIGHT CAPITAL
رايت كابيتال للتطوير العقاري
REAL ESTATE DEVELOPMENT

PLOT NO:	C70	رقم القطعة	
ZONE:	Al Shamsiah	المنطقة	
SECTOR:	SH06	القطاع	
USAGE TYPE:	COMMERCIAL	نوع الاستخدام	
TOTAL AREA:	2,304.26 SQ.M (24,802.85 SQ.FT)	مساحة الكلية	
	(مساحة 24,802.85 متر مربع / 2,304.26 متر مربع)		

KEY LOCATION

PROJECT NAME: Al Reeman - Phase 1
 PREPARED BY: DIGITAL REALITY CORP L.L.C (REF: 2024)
 SURVEY STATUS: NO
 ISSUED ON: 25/01/2025
 BLDG NAME & NO.: Right Capital -1
 ADM BUILDING NO.: 1
 SHEET: 1 OF 1

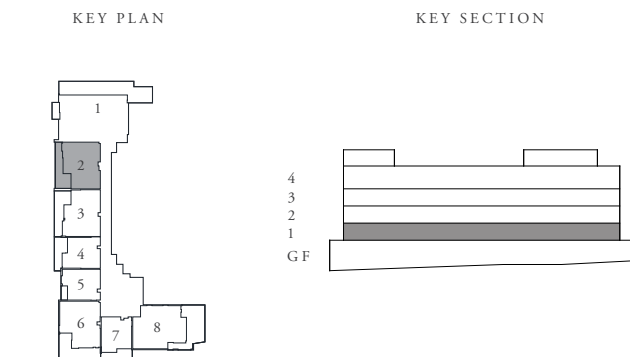
UNIT SITE PLAN
KEY PLAN

LICENSE NO.: 202400097034

RIGHT CAPITAL 1

AL REEMAN LIVING

	LEVEL 01	UNIT 102
SUITE AREA	81.10 SQ.M	872.95 SQ.FT
BALCONY AREA	23.26 SQ.M	250.37 SQ.FT
TOTAL AREA	104.36 SQ.M	1,123.32 SQ.FT



FLOOR PLAN 1. All dimensions are in imperial and metric, and measured from finish to finish excluding construction tolerances. 2. All materials, dimensions, and drawings are approximate only. 3. Information is subject to change without notice, at developer's absolute discretion. 4. Actual area may vary from the stated area. 5. Drawings not to scale. 6. All images used are for illustrative purposes only and do not represent the actual size, features, specifications, fittings, and furnishings. 7. The developer reserves the right to make revisions / alterations, at it's absolute discretion, without any liability whatsoever.

UNIT DETAIL		بيانات الوحدة	
UNIT OWNER: Right Capital Real Estate Development Construction Establishment		ملاك الوحدة: مؤسسة رائد كابيتال للتطوير العقاري للتأسيسات	
UNIT NO: 103 (FLAT)		رقم الوحدة: 103 (شقة)	
SUITE AREA (ADUAMS2-U): 80.47 SQ.M (866.17 SQ.FT)		مساحة الوحدة (بدون المساحة): 80.47 متر مربع (866.17 قدم مربع)	
BALCONY AREA (Ua): 25.63 SQ.M (275.88 SQ.FT)		مساحة التراس (Ua): 25.63 متر مربع (275.88 قدم مربع)	
TOTAL UNIT AREA (ADUA1): 106.10 SQ.M (1,142.05 SQ.FT)		المساحة الكلية (ADUA1): 106.10 متر مربع (1,142.05 قدم مربع)	

Legend:

- Unit Boundary
- ADUAMS2
- Ua (Balcony / Terrace)
- Uc (Wards and Shafts)

DM / ALM
ADUA1 = ADUAMS2 + Ua + Uc

GENERAL NOTES:

- This plan is prepared by a registered surveyor, and the Total Unit Area specified in this Unit Site Plan is calculated according to the Abu Dhabi Unit Area 1 (ADUATS), as specified in the Abu Dhabi Property Measurement Standards (ADPMS).
- The architectural detail in this plan is based on Detail Design drawings, and final As-Built conditions may vary.
- All architectural details are for illustrative purposes only.
- ADUA1 is identified as the Gross Saleable Area.

UNIT DETAIL
SCALE: NTS

SITE PLAN
SCALE: 1:500

UNIT LOCATION IN BUILDING
CA = Common Area

FLOOR 01
SCALE: NTS

RIGHT CAPITAL
رئيس كابيتال للتطوير العقاري
REAL ESTATE DEVELOPMENT

PLOT NO:	C70	رقم القطعة:	C70
ZONE:	Al Shamsiah	المنطقة:	الشمسية
SECTOR:	SH06	القطاع:	SH06
USAGE TYPE:	COMMERCIAL	نوع الاستخدام:	تجاري
TOTAL AREA:	2,304.26 SQ.M (24,802.85 SQ.FT)	المساحة الكلية:	2,304.26 متر مربع (24,802.85 قدم مربع)

KEY LOCATION

PROJECT NAME: Al Reeman - Phase 1
 PREPARED BY: DIGITAL REALTY CORP L.L.C (REF: 2024)
 SURVEY STATUS: NO
 ISSUED ON: 25/01/2025
 BLDG NAME & NO: Right Capital -1
 ADM BUILDING NO: 1
 SHEET: 1 OF 1

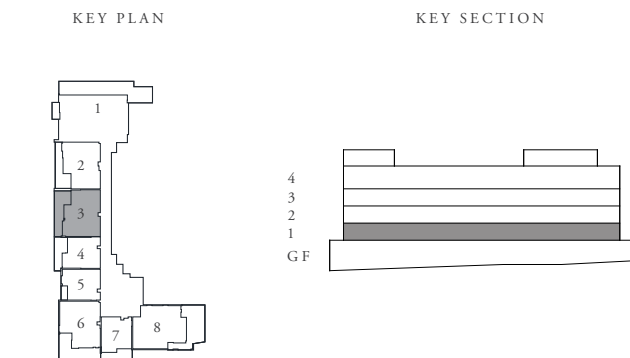
UNIT SITE PLAN
KEY PLAN

LICENSE NO.: 202400097034

RIGHT CAPITAL 1

AL REEMAN LIVING

	LEVEL 01	UNIT 103
SUITE AREA	80.47 SQ.M	866.17 SQ.FT
BALCONY AREA	25.63 SQ.M	275.88 SQ.FT
TOTAL AREA	106.10 SQ.M	1,142.05 SQ.FT



FLOOR PLAN 1. All dimensions are in imperial and metric, and measured from finish to finish excluding construction tolerances. 2. All materials, dimensions, and drawings are approximate only. 3. Information is subject to change without notice, at developer's absolute discretion. 4. Actual area may vary from the stated area. 5. Drawings not to scale. 6. All images used are for illustrative purposes only and do not represent the actual size, features, specifications, fittings, and furnishings. 7. The developer reserves the right to make revisions / alterations, at it's absolute discretion, without any liability whatsoever.

UNIT DETAIL		بيانات الوحدة	
UNIT OWNER	Right Capital Real Estate Development Construction Establishment	مالك الوحدة	مؤسسة رائد كابيتال للتطوير العقاري للتأسيسات
UNIT NO:	104 (FLAT)	رقم الوحدة:	104 (شقة)
SUITE AREA (ADUAMS2-U)	54.72 SQ.M (589.00 SQ.FT)	مساحة الوحدة (ADUAMS2-U)	
BALCONY AREA (Ua)	17.21 SQ.M (185.25 SQ.FT)	مساحة البلكونة (Ua)	
TOTAL UNIT AREA (ADUAT)	71.93 SQ.M (774.25 SQ.FT)	المساحة الكلية (ADUAT)	

Legend:

- Unit Boundary
- ADUAMS2
- Ua (Balcony / Terrace)
- Uc (Wards and Shafts)

DM / ADM
ADUAT = ADUAMS2 + Ua + Uc

GENERAL NOTES:

- This plan is prepared by a registered surveyor, and the Total Unit Area specified in this Unit Site Plan is calculated according to Abu Dhabi Unit Area 1 (ADUATs), as specified in the Abu Dhabi Property Measurement Standards (ADPMS).
- The architectural detail in this plan is based on Detail Design drawings, and final As-Built conditions may vary.
- All architectural details are for illustration purposes only.
- ADUAT is identified as the Gross Saleable Area.

UNIT DETAIL
SCALE: NTS

SITE PLAN
SCALE: 1:500

UNIT LOCATION IN BUILDING
SCALE: NTS

CA = Common Area

FLOOR 01
SCALE: NTS

PLOT NO:	C70	رقم القطعة
ZONE:	Al Shamsiyah	المنطقة
SECTOR:	SH06	القطاع
USAGE TYPE:	COMMERCIAL	نوع الاستخدام
TOTAL AREA:	2,304.26 SQ.M (24,802.85 SQ.FT)	إجمالي المساحة
	(24,802.85 متر مربع)	(2,304.26 متر مربع)

KEY LOCATION

PROJECT NAME: Al Reeman - Phase 1
 PREPARED BY: DIGITAL REALITY CORP L.L.C (REF: 2024)
 SURVEY STATUS: NO
 ISSUED ON: 25/01/2025
 BLDG NAME & NO.: Right Capital -1
 ADM BUILDING NO.: 1
 SHEET: 1 OF 1

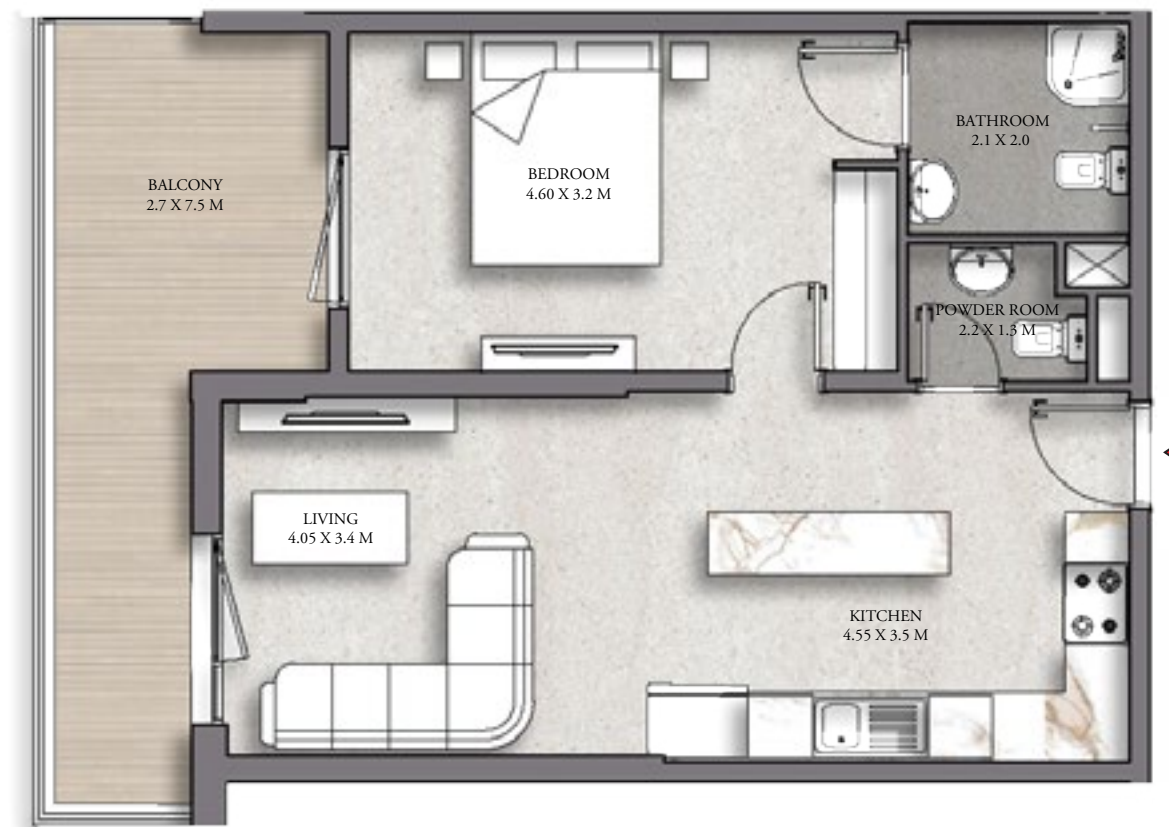
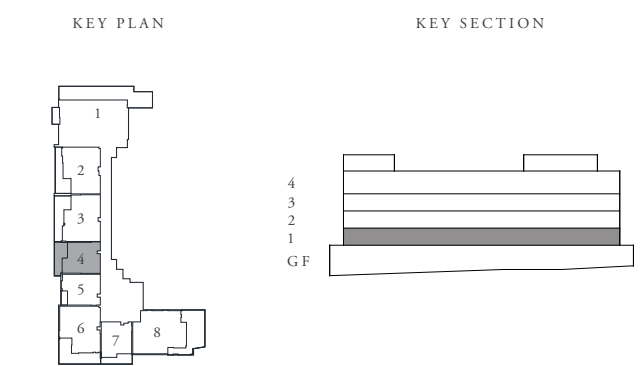
UNIT SITE PLAN
KEY PLAN

LICENSE NO.: 202400097934

RIGHT CAPITAL 1

AL REEMAN LIVING

	LEVEL 01	UNIT 104
SUITE AREA	54.72 SQ.M	589.00 SQ.FT
BALCONY AREA	17.21 SQ.M	185.25 SQ.FT
TOTAL AREA	71.93 SQ.M	774.25 SQ.FT



FLOOR PLAN 1. All dimensions are in imperial and metric, and measured from finish to finish excluding construction tolerances. 2. All materials, dimensions, and drawings are approximate only. 3. Information is subject to change without notice, at developer's absolute discretion. 4. Actual area may vary from the stated area. 5. Drawings not to scale. 6. All images used are for illustrative purposes only and do not represent the actual size, features, specifications, fittings, and furnishings. 7. The developer reserves the right to make revisions / alterations, at it's absolute discretion, without any liability whatsoever.



UNIT DETAIL		بيانات الوحدة	
UNIT OWNER	Right Capital Real Estate Development Construction Establishment	مالك الوحدة	مؤسسة رائد كابيتال للتطوير العقاري للتأسيسات
UNIT NO:	105 (FLAT)	رقم الوحدة:	105 (شقة)
SUITE AREA (ADUMS2-U)	54.96 SQ.M (591.58 SQ.FT)	مساحة الوحدة (ADUMS2-U)	
BALCONY AREA (Ua)	4.57 SQ.M (49.20 SQ.FT)	مساحة التراسوة (Ua)	
TOTAL UNIT AREA (ADUAT)	59.53 SQ.M (640.78 SQ.FT)	المساحة الكلية (ADUAT)	

Legend:

- Unit Boundary
- ADUMS2
- Ua (Balcony / Terrace)
- Uc (Wards and Shafts)

GENERAL NOTES:

- This plan is prepared by a registered surveyor, and the Total Unit Area specified in this Unit Site Plan is calculated according to Abu Dhabi Unit Area 1 (ADUATs), as specified in the Abu Dhabi Property Measurement Standards (ADPMS).
- The architectural detail in this plan is based on Detail Design drawings, and final As-Built conditions may vary.
- All architectural details are for illustration purposes only.
- ADUAT is identified as the Gross Saleable Area.

UNIT DETAIL SCALE: NTS

SITE PLAN
SCALE: 1:500

UNIT LOCATION IN BUILDING
CA = Common Area

FLOOR 01
SCALE: NTS

RIGHT CAPITAL
رئيس كابيتال للتطوير العقاري
REAL ESTATE DEVELOPMENT

PLOT NO:	C70	رقم القطعة:	
ZONE:	Al Shamsiah	المنطقة:	
SECTOR:	SH06	القطاع:	
USAGE TYPE:	COMMERCIAL	نوع الاستخدام:	
TOTAL AREA:	2,304.26 SQ.M (24,802.85 SQ.FT)	إجمالي المساحة:	24,802.85 متر مربع (2,304.26 متر مربع)

KEY LOCATION

PROJECT NAME: Al Reeman - Phase 1
 PREPARED BY: DIGITAL REALITY CORP L.L.C (REF: 2024)
 SURVEY STATUS: NO
 ISSUED ON: 25/01/2025
 BLDG NAME & NO.: Right Capital -1
 ADM BUILDING NO.: 1
 SHEET: 1 OF 1

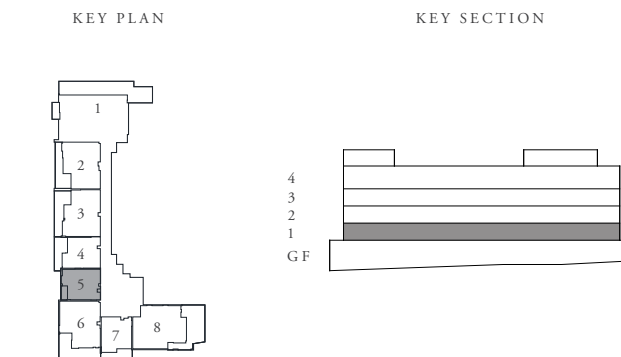
UNIT SITE PLAN
KEY PLAN

LICENSE NO.: 20240009704

RIGHT CAPITAL 1

AL REEMAN LIVING

	LEVEL 01	UNIT 105
SUITE AREA	54.96 SQ.M	591.58 SQ.FT
BALCONY AREA	4.57 SQ.M	49.20 SQ.FT
TOTAL AREA	59.53 SQ.M	640.78 SQ.FT



KITCHEN
4.55 X 3.5 M

LIVING
4.05 X 3.4 M

BEDROOM
4.60 X 3.2 M

BALCONY
1.1 X 3.2 M

POWDER ROOM
2.2 X 1.3 M

BATHROOM
2.1 X 2.0 M

FLOOR PLAN 1. All dimensions are in imperial and metric, and measured from finish to finish excluding construction tolerances. 2. All materials, dimensions, and drawings are approximate only. 3. Information is subject to change without notice, at developer's absolute discretion. 4. Actual area may vary from the stated area. 5. Drawings not to scale. 6. All images used are for illustrative purposes only and do not represent the actual size, features, specifications, fittings, and furnishings. 7. The developer reserves the right to make revisions / alterations, at it's absolute discretion, without any liability whatsoever.

UNIT DETAIL		بيانات الوحدة	
UNIT OWNER: Right Capital Real Estate Development Construction/Establishment		ملاك الوحدة: مؤسسة رائد كابيتال للتطوير العقاري للتأسيسات	
UNIT NO: 106 (FLAT)		رقم الوحدة: 106 (شقة)	
SUITE AREA (ADUAMS2-U): 85.78 SQ.M (923.33 SQ.FT)		مساحة الوحدة (شقة): 85.78 SQ.M (923.33 SQ.FT)	
BALCONY AREA (Ua): 32.95 SQ.M (354.67 SQ.FT)		مساحة التراسوة (Ua): 32.95 SQ.M (354.67 SQ.FT)	
TOTAL UNIT AREA (ADUA1): 118.73 SQ.M (1,278.00 SQ.FT)		المساحة الكلية (ADUA1): 118.73 SQ.M (1,278.00 SQ.FT)	

Legend:

- Unit Boundary
- ADUAMS2
- Ua (Balcony / Terrace)
- Uc (Wards and Shafts)

DM / ALM
ADUA1 = ADUAMS2 + Ua + Uc

GENERAL NOTES:

- This plan is prepared by a registered surveyor, and the Total Unit Area specified on this Unit Site Plan is calculated according to Abu Dhabi Unit Area 1 (ADUAMS2), as specified in the Abu Dhabi Property Measurement Standards (ADPMS).
- The architectural detail in this plan is based on Detail Design drawings, and final As-Built conditions may vary.
- All architectural details are for illustrative purposes only.
- ADUA1 is identified as the Gross Saleable Area.

UNIT DETAIL
SCALE: NTS

SITE PLAN
SCALE: 1:500

UNIT LOCATION IN BUILDING
SCALE: NTS

CA = Common Area

FLOOR 01
SCALE: NTS

RIGHT CAPITAL
رئيس كابيتال للتطوير العقاري
REAL ESTATE DEVELOPMENT

PLOT NO:	C70	رقم القطعة:	C70
ZONE:	Al Shamsiyah	المنطقة:	الشمسية
SECTOR:	SH06	المسقط:	SH06
USAGE TYPE:	COMMERCIAL	نوع الاستخدام:	تجاري
TOTAL AREA:	2,304.26 SQ.M (24,802.85 SQ.FT)	إجمالي المساحة:	2,304.26 متر مربع (24,802.85 قدم مربع)

KEY LOCATION

PROJECT NAME: Al Reeman - Phase 1
 PREPARED BY: DIGITAL REALITY CORP L.L.C (REF: 2024)
 SURVEY STATUS: NO
 ISSUED ON: 25/01/2025
 BLDG NAME & NO: Right Capital -1
 ADM BUILDING NO: 1
 SHEET: 106-1

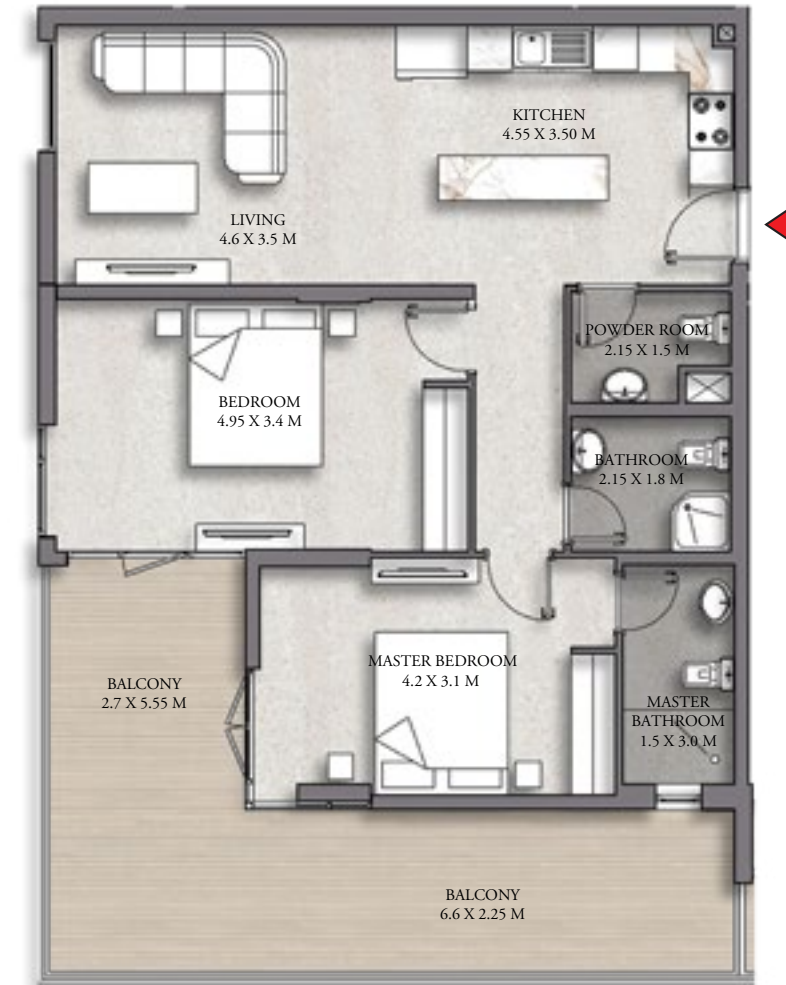
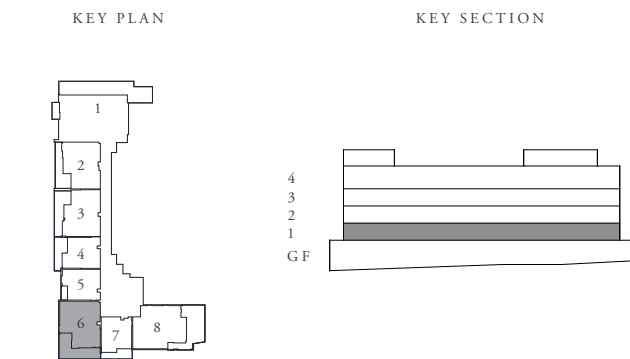
UNIT SITE PLAN
KEY PLAN

LICENSE NO: 202400007034

RIGHT CAPITAL 1

AL REEMAN LIVING

	LEVEL 01	UNIT 106
SUITE AREA	85.78 SQ.M	923.33 SQ.FT
BALCONY AREA	32.95 SQ.M	354.67 SQ.FT
TOTAL AREA	118.73 SQ.M	1,278.00 SQ.FT



FLOOR PLAN 1. All dimensions are in imperial and metric, and measured from finish to finish excluding construction tolerances. 2. All materials, dimensions, and drawings are approximate only. 3. Information is subject to change without notice, at developer's absolute discretion. 4. Actual area may vary from the stated area. 5. Drawings not to scale. 6. All images used are for illustrative purposes only and do not represent the actual size, features, specifications, fittings, and furnishings. 7. The developer reserves the right to make revisions / alterations, at it's absolute discretion, without any liability whatsoever.

UNIT DETAIL		بيانات الوحدة	
UNIT OWNER: Right Capital Real Estate Development Construction Establishment		ملاك الوحدة: مؤسسة رائد كابيتال للتطوير العقاري للتأسيسات	
UNIT NO: 107 (FLAT)		رقم الوحدة: 107 (شقة)	
SUITE AREA (ADUAMS2-U)	50.73 SQ.M (546.05 SQ.FT)	Sاحة الوحدة (ADUAMS2-U)	
BALCONY AREA (Ua)	13.43 SQ.M (144.56 SQ.FT)	مساحة البلكونة (Ua)	
TOTAL UNIT AREA (ADUAT)	64.16 SQ.M (690.61 SQ.FT)	المساحة الكلية (ADUAT)	

Legend:

- Unit Boundary
- ADUAMS2
- Ua (Balcony / Terrace)
- Uc (Wards and Shafts)

Legend:

- UAM / AUM
- ADUAT = ADUAMS2 + Ua + Uc

GENERAL NOTES:

- This plan is prepared by a registered surveyor, and the Total Unit Area specified in this Unit Site Plan is calculated according to Abu Dhabi Unit Area 1 (ADUATs), as specified in the Abu Dhabi Property Measurement Standards (ADPMS).
- The architectural detail in this plan is based on Detail Design drawings, and final As-Built conditions may vary.
- All architectural details are for illustrative purposes only.
- ADUAT is identified as the Gross Saleable Area.

UNIT DETAIL SCALE: NTS

SITE PLAN
SCALE: 1:500

UNIT LOCATION IN BUILDING
SCALE: NTS

CA = Common Area

FLOOR 01 SCALE: NTS

RIGHT CAPITAL
رئيس كابيتال للتطوير العقاري
REAL ESTATE DEVELOPMENT

KEY LOCATION

PROJECT NAME: Al Reeman - Phase 1
 PREPARED BY: DIGITAL REALITY CORP L.L.C (REF: 2024)
 SURVEY STATUS: NO
 ISSUED ON: 25/01/2025
 BLDG NAME & NO: Right Capital -1
 ADM BUILDING NO: 1
 SHEET: 1 OF 1

UNIT SITE PLAN
KEY PLAN

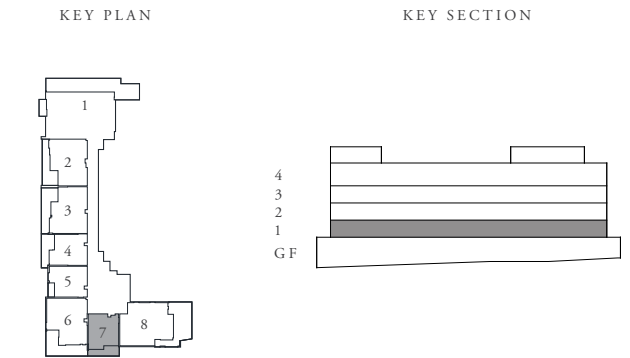
KEY SECTION

LICENSE NO.: 20040007034

RIGHT CAPITAL 1

AL REEMAN LIVING

	LEVEL 01	UNIT 107
SUITE AREA	50.73 SQ.M	546.05 SQ.FT
BALCONY AREA	13.43 SQ.M	144.56 SQ.FT
TOTAL AREA	64.16 SQ.M	690.61 SQ.FT



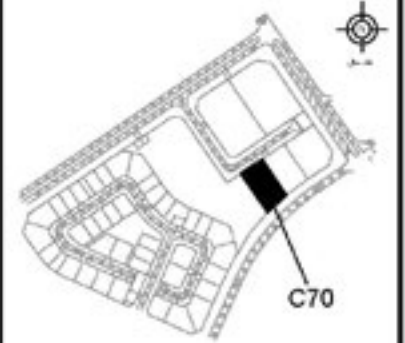
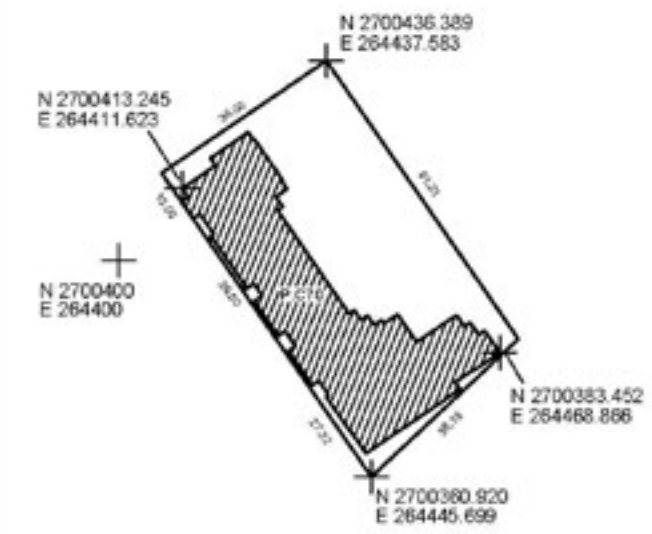
RIGHT CAPITAL
رايد كابيتال للتطوير العقاري
REAL ESTATE DEVELOPMENT

FLOOR PLAN 1. All dimensions are in imperial and metric, and measured from finish to finish excluding construction tolerances. 2. All materials, dimensions, and drawings are approximate only. 3. Information is subject to change without notice, at developer's absolute discretion. 4. Actual area may vary from the stated area. 5. Drawings not to scale. 6. All images used are for illustrative purposes only and do not represent the actual size, features, specifications, fittings, and furnishings. 7. The developer reserves the right to make revisions / alterations, at it's absolute discretion, without any liability whatsoever.

UNIT DETAIL		بيانات الوحدة	
UNIT OWNER	Right Capital Real Estate Development Construction/Establishment	مالك الوحدة	مؤسسة رأيت كابيتال للتطوير العقاري للتأسيسات
UNIT NO:	108 (FLAT)	رقم الوحدة:	108 (شقة)
SUITE AREA (ADUAMS2-U)	102.68 SQ.M (1,105.24 SQ.FT)	مساحة الوحدة (ADUAMS2-U)	
BALCONY AREA (Ua)	46.99 SQ.M (505.79 SQ.FT)	مساحة التراسوة (Ua)	
TOTAL UNIT AREA (ADUAT)	149.67 SQ.M (1,611.03 SQ.FT)	المساحة الكلية (ADUAT)	

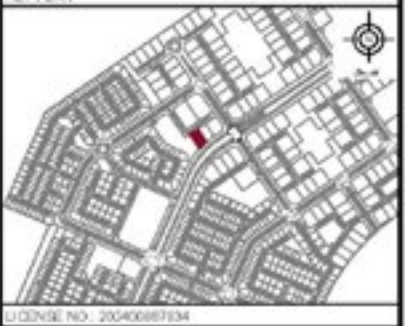


PLOT NO:	C70	رقم القطعة	
ZONE:	Al Shamsiah	المنطقة	
SECTOR:	SH06	القطاع	
USAGE TYPE:	COMMERCIAL	نوع الاستخدام	
TOTAL AREA:	2,304.26 SQ.M (24,802.85 SQ.FT)	إجمالي المساحة	
	(مساحة مخطط: 24,802.85 متر مربع / مساحه مخطط: 2,304.26)		



KEY LOCATION	
PROJECT NAME:	Al Reeman -Phase 1
PREPARED BY:	DIGITAL REALITY CORP L.L.C (REF: 2024)
SURVEY STATUS:	NO
ISSUED ON:	25/01/2025
BLDG NAME & NO.:	Right Capital -1
ADM BUILDING NO.:	1
SHEET:	1 OF 1

UNIT SITE PLAN



Legend:

[Blue outline]	Unit Boundary
[Orange fill]	ADUAMS2
[Red fill]	Ua (Balcony / Terrace)
[Blue fill]	Uc (Wards and Shafts)

UAM / ULM
ADUAT = ADUAMS2 + Ua + Uc

- GENERAL NOTES:
- This plan is prepared by a registered surveyor, and the Total Unit Area specified in this Unit Site Plan is calculated according to Abu Dhabi Unit Area 1 (ADUAT), as specified in the Abu Dhabi Property Measurement Standards (ADPMS).
 - The architectural detail in this plan is based on Detail Design drawings, and final As-Built conditions may vary.
 - All architectural details are for illustrative purposes only.
 - ADUAT is identified as the Gross Saleable Area.

UNIT DETAIL
SCALE: NTS

SITE PLAN

SCALE: 1:500

UNIT LOCATION IN BUILDING

CA = Common Area



FLOOR 01
SCALE: NTS

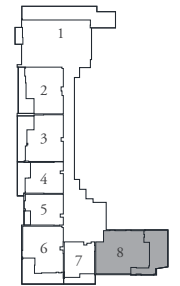
RIGHT CAPITAL 1

AL REEMAN LIVING

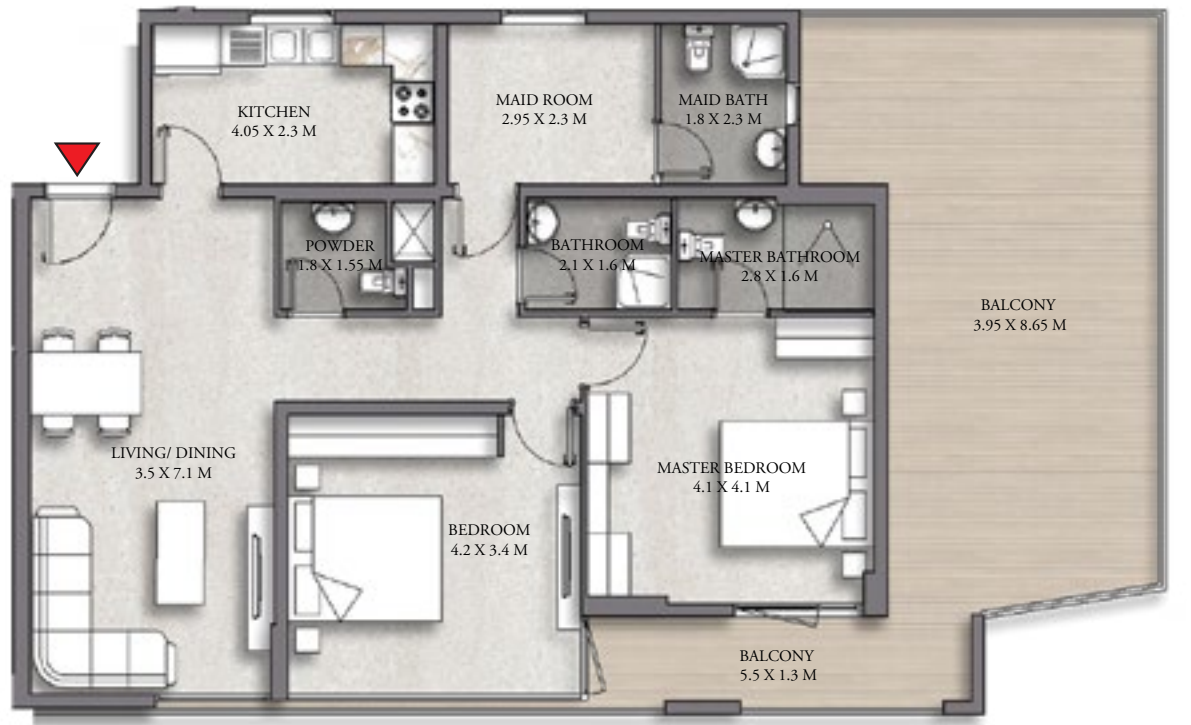
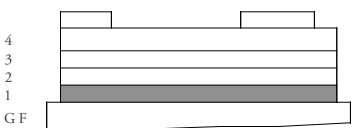


	LEVEL 01	UNIT 108
SUITE AREA	102.68 SQ.M	1,105.24 SQ.FT
BALCONY AREA	46.99 SQ.M	505.79 SQ.FT
TOTAL AREA	149.67 SQ.M	1,611.03 SQ.FT

KEY PLAN



KEY SECTION



FLOOR PLAN 1. All dimensions are in imperial and metric, and measured from finish to finish excluding construction tolerances. 2. All materials, dimensions, and drawings are approximate only. 3. Information is subject to change without notice, at developer's absolute discretion. 4. Actual area may vary from the stated area. 5. Drawings not to scale. 6. All images used are for illustrative purposes only and do not represent the actual size, features, specifications, fittings, and furnishings. 7. The developer reserves the right to make revisions / alterations, at it's absolute discretion, without any liability whatsoever.

UNIT DETAIL		بيانات الوحدة	
UNIT OWNER	Right Capital Real Estate Development Construction/Establishment	مالك الوحدة	مؤسسة رائد كابيتال للتطوير العقاري للتأسيسات
UNIT NO:	201 (FLAT)	رقم الوحدة:	201 (شقة)
SUITE AREA (ADUAMS2-U)	120.91 SQ.M (1,301.48 SQ.FT)	مساحة الوحدة (ADUAMS2-U)	
BALCONY AREA (Ua)	20.86 SQ.M (224.54 SQ.FT)	مساحة البلكونة (Ua)	
TOTAL UNIT AREA (ADUAI)	141.77 SQ.M (1,526.00 SQ.FT)	المساحة الكلية (ADUAI)	

Legend:

- Unit Boundary
- ADUAMS2
- Ua (Balcony / Terrace)
- Uc (Wards and Shafts)

GENERAL NOTES:

- This plan is prepared by a registered surveyor, and the Total Unit Area specified in this Unit Site Plan is calculated according to Abu Dhabi Unit Area 1 (ADUAI), as specified in the Abu Dhabi Property Measurement Standards (ADPMS).
- The architectural detail in this plan is based on Detail Design drawings, and final As-Built conditions may vary.
- All architectural details are for illustrative purposes only.
- ADUAI is identified as the Gross Saleable Area.

UNIT DETAIL SCALE: NTS

SITE PLAN SCALE: 1:500

UNIT LOCATION IN BUILDING موقع الوحدة في المبنى

CA = Common Area

FLOOR 02 SCALE: NTS

RIGHT CAPITAL
رئيس كابيتال للتطوير العقاري
REAL ESTATE DEVELOPMENT

PLOT NO:	C70	رقم القطعة
ZONE:	Al Shamsiah	المنطقة
SECTOR:	SH06	القطاع
USAGE TYPE:	COMMERCIAL	نوع الاستخدام
TOTAL AREA:	2,304.26 SQ.M (24,802.85 SQ.FT)	إجمالي المساحة
	(مساحة مخطط: 24,802.85 متر مربع / مساحه مخطط: 2,304.26 متر مربع)	

KEY LOCATION

PROJECT NAME: Al Reeman - Phase 1
 PREPARED BY: DIGITAL REALTY CORP L.L.C (REF: 2024)
 SURVEY STATUS: NO
 ISSUED ON: 25/01/2025
 BLDG NAME & NO.: Right Capital -1
 ADM BUILDING NO.: 1
 SHEET: 1 OF 1

UNIT SITE PLAN

KEY PLAN

LICENSE NO.: 202400097034

RIGHT CAPITAL 1

AL REEMAN LIVING

	LEVEL 02	UNIT 201
SUITE AREA	120.91 SQ.M	1,301.46 SQ.FT
BALCONY AREA	20.86 SQ.M	224.54 SQ.FT
TOTAL AREA	141.77 SQ.M	1,526.00 SQ.FT



FLOOR PLAN 1. All dimensions are in imperial and metric, and measured from finish to finish excluding construction tolerances. 2. All materials, dimensions, and drawings are approximate only. 3. Information is subject to change without notice, at developer's absolute discretion. 4. Actual area may vary from the stated area. 5. Drawings not to scale. 6. All images used are for illustrative purposes only and do not represent the actual size, features, specifications, fittings, and furnishings. 7. The developer reserves the right to make revisions / alterations, at it's absolute discretion, without any liability whatsoever.



UNIT DETAIL

بيانات الوحدة

UNIT OWNER: Right Capital Real Estate Development Construction Establishment	مالك الوحدة: مؤسسة رائد كابيتال للتطوير العقاري للتأسيسات
UNIT NO: 202 (FLAT)	رقم الوحدة: 202 (شقة)
SUITE AREA (ADUAMS2-U): 81.10 SQ.M (872.95 SQ.FT)	مساحة الوحدة (ADUAMS2-U): 81.10 متر مربع (872.95 متر مربع)
BALCONY AREA (Ua): 22.23 SQ.M (239.28 SQ.FT)	مساحة التراس (Ua): 22.23 متر مربع (239.28 متر مربع)
TOTAL UNIT AREA (ADUAT): 103.33 SQ.M (1,112.23 SQ.FT)	المساحة الكلية (ADUAT): 103.33 متر مربع (1,112.23 متر مربع)

Legend:

- Unit Boundary
- ADUAMS2
- Ua (Balcony / Terrace)
- Uc (Wards and Shafts)

Legend:

- DM / ADM
- ADUAT = ADUAMS2 + Ua + Uc

GENERAL NOTES:

- This plan is prepared by a registered surveyor, and the Total Unit Area specified in this Unit Site Plan is calculated according to Abu Dhabi Unit Area 1 (ADUATs), as specified in the Abu Dhabi Property Measurement Standards (ADPMS).
- The architectural detail in this plan is based on Detail Design drawings, and final As-Built conditions may vary.
- All architectural features are for illustrative purposes only.
- ADUAT is identified as the Gross Saleable Area.

UNIT DETAIL SCALE: NTS

SITE PLAN SCALE: 1:500

UNIT LOCATION IN BUILDING

موقع الوحدة في المبنى

CA = Common Area

FLOOR 02 SCALE: NTS

RIGHT CAPITAL REAL ESTATE DEVELOPMENT

PLOT NO:	C70	رقم القطعة:	C70
ZONE:	Al Shamsiah	المنطقة:	الشمسية
SECTOR:	SH06	القطاع:	SH06
USAGE TYPE:	COMMERCIAL	نوع الاستخدام:	تجاري
TOTAL AREA:	2,304.26 SQ.M (24,802.85 SQ.FT)	المساحة الكلية:	2,304.26 متر مربع (24,802.85 متر مربع)

KEY LOCATION

PROJECT NAME: Al Reeman - Phase 1

PREPARED BY: DIGITAL REALITY CORP L.L.C (REF: 2024)

SURVEY STATUS: NO

ISSUED ON: 25/01/2025

BLDG NAME & NO: Right Capital -1

ADM BUILDING NO: 1

SHEET 1 OF 1

UNIT SITE PLAN

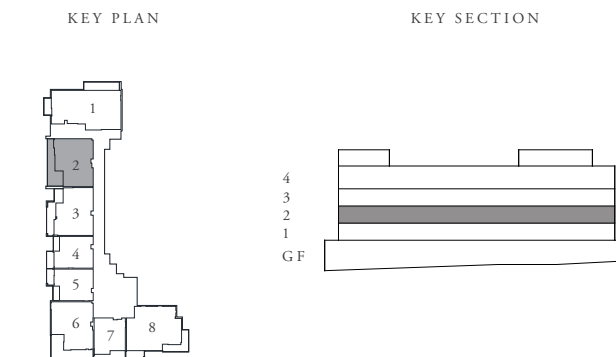
KEY PLAN

LICENSE NO.: 202400097034

RIGHT CAPITAL 1

AL REEMAN LIVING

	LEVEL 02	UNIT 202
SUITE AREA	81.10 SQ.M	872.95 SQ.FT
BALCONY AREA	22.23 SQ.M	239.28 SQ.FT
TOTAL AREA	103.33 SQ.M	1,112.23 SQ.FT



FLOOR PLAN 1. All dimensions are in imperial and metric, and measured from finish to finish excluding construction tolerances. 2. All materials, dimensions, and drawings are approximate only. 3. Information is subject to change without notice, at developer's absolute discretion. 4. Actual area may vary from the stated area. 5. Drawings not to scale. 6. All images used are for illustrative purposes only and do not represent the actual size, features, specifications, fittings, and furnishings. 7. The developer reserves the right to make revisions / alterations, at it's absolute discretion, without any liability whatsoever.

UNIT DETAIL		بيانات الوحدة	
UNIT OWNER	Right Capital Real Estate Development Construction Establishment	مالك الوحدة	مؤسسة رأيت كابيتال للتطوير العقاري للتأسيسات
UNIT NO:	203 (FLAT)	رقم الوحدة:	203 (شقة)
SUITE AREA (ADUAMS2-U)	80.59 SQ.M (867.46 SQ.FT)	مساحة الوحدة (ADUAMS2-U)	
BALCONY AREA (Ua)	19.33 SQ.M (208.07 SQ.FT)	مساحة التراسوة (Ua)	
TOTAL UNIT AREA (ADUAI)	99.92 SQ.M (1,075.53 SQ.FT)	المساحة الكلية (ADUAI)	

Legend:

- Unit Boundary
- ADUAMS2
- Ua (Balcony / Terrace)
- Uc (Wards and Shafts)

GENERAL NOTES:

- This plan is prepared by a registered surveyor, and the Total Unit Area specified in this Unit Site Plan is calculated according to the Abu Dhabi Unit Area 1 (ADUAI), as specified in the Abu Dhabi Property Measurement Standards (ADPMS).
- The architectural detail in this plan is based on Detail Design drawings, and final As-Built conditions may vary.
- All architectural details are for illustrative purposes only.
- ADUAI is identified as the Gross Saleable Area.

UNIT DETAIL
SCALE: NTS

SITE PLAN
SCALE: 1:500

UNIT LOCATION IN BUILDING
SCALE: NTS

CA = Common Area

FLOOR 02
SCALE: NTS

RIGHT CAPITAL
رأيت كابيتال للتطوير العقاري
REAL ESTATE DEVELOPMENT

PLOT NO:	C70	رقم القطعة	
ZONE:	Al Shamsiah	المنطقة	
SECTOR:	SH06	القطاع	
USAGE TYPE:	COMMERCIAL	نوع الاستخدام	
TOTAL AREA:	2,304.26 SQ.M (24,802.85 SQ.FT)	مساحة القطعة	
	(مساحة مخطط: 24,802.85 متر مربع) (مساحة مخطط: 2,304.26 متر مربع)		

KEY LOCATION

PROJECT NAME: Al Reeman - Phase 1
 PREPARED BY: DIGITAL REALTY CORP L.L.C (REF: 2024)
 SURVEY STATUS: NO
 ISSUED ON: 25/01/2025
 BLDG NAME & NO: Right Capital -1
 ADM BUILDING NO: 1
 SHEET: 1 OF 1

UNIT SITE PLAN
KEY PLAN

LICENSE NO: 20240007934

RIGHT CAPITAL 1

AL REEMAN LIVING

	LEVEL 02	UNIT 203
SUITE AREA	80.59 SQ.M	867.46 SQ.FT
BALCONY AREA	19.33 SQ.M	208.07 SQ.FT
TOTAL AREA	99.92 SQ.M	1,075.53 SQ.FT

KEY PLAN

KEY SECTION

FLOOR PLAN 1. All dimensions are in imperial and metric, and measured from finish to finish excluding construction tolerances. 2. All materials, dimensions, and drawings are approximate only. 3. Information is subject to change without notice, at developer's absolute discretion. 4. Actual area may vary from the stated area. 5. Drawings not to scale. 6. All images used are for illustrative purposes only and do not represent the actual size, features, specifications, fittings, and furnishings. 7. The developer reserves the right to make revisions / alterations, at it's absolute discretion, without any liability whatsoever.

UNIT DETAIL		بيانات الوحدة	
UNIT OWNER	Right Capital Real Estate Development Construction Establishment	مالك الوحدة	مؤسسة رأسية للتطوير العقاري للتأسيسات
UNIT NO:	204 (FLAT)	رقم الوحدة:	204 (شقة)
SUITE AREA (ADUAMS2-U)	55.04 SQ.M (592.45 SQ.FT)	مساحة الوحدة (ADUAMS2-U)	
BALCONY AREA (Ua)	10.42 SQ.M (112.35 SQ.FT)	مساحة التراسوة (Ua)	
TOTAL UNIT AREA (ADUAT)	65.46 SQ.M (704.81 SQ.FT)	المساحة الكلية (ADUAT)	

Legend:

- Unit Boundary
- ADUAMS2
- Ua (Balcony / Terrace)
- Uc (Wards and Shafts)

DM / ADM
ADUAT = ADUAMS2 + Ua + Uc

GENERAL NOTES:

- This plan is prepared by a registered surveyor, and the Total Unit Area specified in this Unit Site Plan is calculated according to Abu Dhabi Unit Area 1 (ADUATs), as specified in the Abu Dhabi Property Measurement Standards (ADPMS).
- The architectural detail in this plan is based on Detail Design drawings, and final As-Built conditions may vary.
- All architectural details are for illustrative purposes only.
- ADUAT is identified as the Gross Saleable Area.

UNIT DETAIL
SCALE: NTS

SITE PLAN
SCALE: 1:500

UNIT LOCATION IN BUILDING
Scale: NTS

CA = Common Area

FLOOR 02
SCALE: NTS

RIGHT CAPITAL
رأسية للتطوير العقاري
REAL ESTATE DEVELOPMENT

PLOT NO:	C70	رقم القطعة:	
ZONE:	Al Shamsiyah	المنطقة:	
SECTOR:	SH06	القطاع:	
USAGE TYPE:	COMMERCIAL	نوع الاستخدام:	
TOTAL AREA:	2,304.26 SQ.M (24,802.85 SQ.FT)	إجمالي المساحة:	
	(24,802.85 متر مربع)		

KEY LOCATION

PROJECT NAME: Al Reeman - Phase 1
 PREPARED BY: DIGITAL REALITY CORP L.L.C (REF: 2024)
 SURVEY STATUS: NO
 ISSUED ON: 25/01/2025
 BLDG NAME & NO.: Right Capital -1
 ADM BUILDING NO.: 1
 SHEET: 1 OF 1

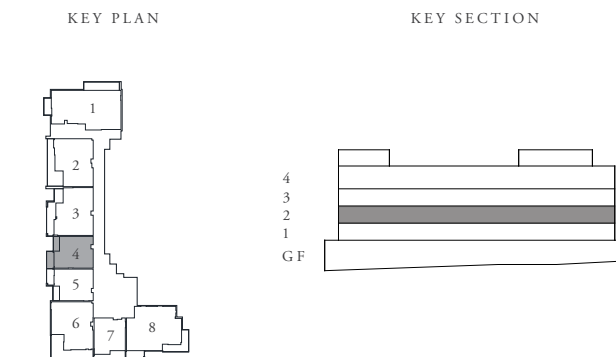
UNIT SITE PLAN
KEY PLAN

LICENSE NO.: 202400097934

RIGHT CAPITAL 1

AL REEMAN LIVING

	LEVEL 02	UNIT 204
SUITE AREA	55.04 SQ.M	592.45 SQ.FT
BALCONY AREA	10.42 SQ.M	112.16 SQ.FT
TOTAL AREA	65.46 SQ.M	704.61 SQ.FT



BALCONY 1.1 X 3.2 M

BEDROOM 4.60 X 3.2 M

BATHROOM 2.1 X 2.0

POWDER ROOM 2.2 X 1.3 M

LIVING 4.05 X 3.4 M

KITCHEN 4.55 X 3.5 M

BALCONY 1.2 X 3.5 M

FLOOR PLAN 1. All dimensions are in imperial and metric, and measured from finish to finish excluding construction tolerances. 2. All materials, dimensions, and drawings are approximate only. 3. Information is subject to change without notice, at developer's absolute discretion. 4. Actual area may vary from the stated area. 5. Drawings not to scale. 6. All images used are for illustrative purposes only and do not represent the actual size, features, specifications, fittings, and furnishings. 7. The developer reserves the right to make revisions / alterations, at it's absolute discretion, without any liability whatsoever.

UNIT DETAIL		بيانات الوحدة	
UNIT OWNER	Right Capital Real Estate Development Construction/Establishment	مالك الوحدة	مؤسسة رائد كابيتال للتطوير العقاري للتأسيسات
UNIT NO:	205 (FLAT)	رقم الوحدة:	205 (شقة)
SUITE AREA (ADUAMS2-U)	54.79 SQ.M (589.75 SQ.FT)	مساحة الوحدة (ADUAMS2-U)	
BALCONY AREA (Ua)	10.44 SQ.M (112.38 SQ.FT)	مساحة البلكونة (Ua)	
TOTAL UNIT AREA (ADUAI)	65.23 SQ.M (702.13 SQ.FT)	المساحة الكلية (ADUAI)	

Legend:

- Unit Boundary
- ADUAMS2
- Ua (Balcony / Terrace)
- Uc (Wards and Shafts)

DM / AIM
ADUAI = ADUAMS2 + Ua + Uc

GENERAL NOTES:

- This plan is prepared by a registered surveyor, and the Total Unit Area specified in this Unit Site Plan is calculated according to Abu Dhabi Unit Area 1 (ADUAI), as specified in the Abu Dhabi Property Measurement Standards (ADPMS).
- The architectural detail in this plan is based on Detail Design drawings, and final As-Built conditions may vary.
- All architectural details are for illustrative purposes only.
- ADUAI is identified as the Gross Saleable Area.

UNIT DETAIL
SCALE: NTS

SITE PLAN
SCALE: 1:500

UNIT LOCATION IN BUILDING
Scale: NTS

CA = Common Area

FLOOR 02
SCALE: NTS

PLOT NO:	C70	رقم القطعة	
ZONE:	Al Shamsiyah	المنطقة	
SECTOR:	SH06	القطاع	
USAGE TYPE:	COMMERCIAL	نوع الاستخدام	
TOTAL AREA:	2,304.26 SQ.M (24,802.85 SQ.FT)	إجمالي المساحة	
	(مساحة 24,802.85 متر مربع / 2,304.26 متر مربع)		

KEY LOCATION

PROJECT NAME: Al Reeman - Phase 1
 PREPARED BY: DIGITAL REALTY CORP L.L.C (REF: 2024)
 SURVEY STATUS: NO
 ISSUED ON: 25/01/2025
 BLDG NAME & NO.: Right Capital -1
 ADM BUILDING NO.: 1
 SHEET: 1 OF 1

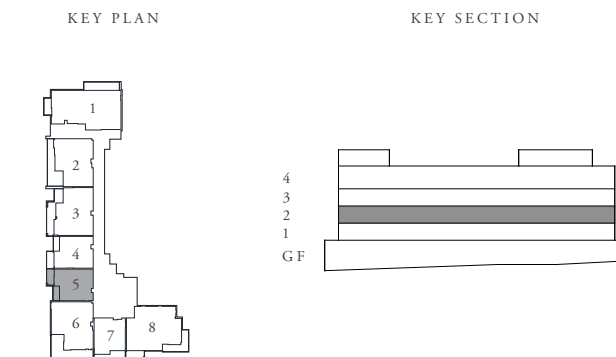
UNIT SITE PLAN
KEY PLAN

LICENSE NO.: 202400007934

RIGHT CAPITAL 1

AL REEMAN LIVING

	LEVEL 02	UNIT 205
SUITE AREA	54.79 SQ.M	589.75 SQ.FT
BALCONY AREA	10.44 SQ.M	112.38 SQ.FT
TOTAL AREA	65.23 SQ.M	702.13 SQ.FT



BALCONY 1.2 X 3.5 M

KITCHEN 4.55 X 3.5 M

LIVING 4.05 X 3.4 M

BALCONY 1.1 X 3.2 M

BEDROOM 4.60 X 3.2 M

POWDER ROOM 2.2 X 1.3 M

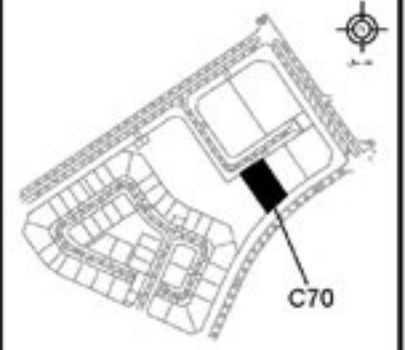
BATHROOM 2.1 X 2.0 M

FLOOR PLAN 1. All dimensions are in imperial and metric, and measured from finish to finish excluding construction tolerances. 2. All materials, dimensions, and drawings are approximate only. 3. Information is subject to change without notice, at developer's absolute discretion. 4. Actual area may vary from the stated area. 5. Drawings not to scale. 6. All images used are for illustrative purposes only and do not represent the actual size, features, specifications, fittings, and furnishings. 7. The developer reserves the right to make revisions / alterations, at it's absolute discretion, without any liability whatsoever.

UNIT DETAIL		بيانات الوحدة	
UNIT OWNER	Right Capital Real Estate Development Construction/Establishment	مالك الوحدة	مؤسسة رأيت كابيتال للتطوير العقاري للتأسيسات
UNIT NO:	206 (FLAT)	رقم الوحدة:	206 (شقة)
SUITE AREA (ADUAMS2-U)	86.02 SQ.M (925.91 SQ.FT)	مساحة الوحدة (ADUAMS2-U)	
BALCONY AREA (Ua)	26.39 SQ.M (284.06 SQ.FT)	مساحة البلكونة (Ua)	
TOTAL UNIT AREA (ADUAI)	112.41 SQ.M (1,209.97 SQ.FT)	المساحة الكلية (ADUAI)	



PLOT NO	C70	رقم القطعة	
ZONE	Al Shamsiah	المنطقة	
SECTOR	SH06	القطاع	
USAGE TYPE	COMMERCIAL	نوع الاستخدام	
TOTAL AREA	2,304.26 SQ.M (24,802.85 SQ.FT)	إجمالي المساحة	
	(24,802.85 متر مربع / 2,304.26 متر مربع)		

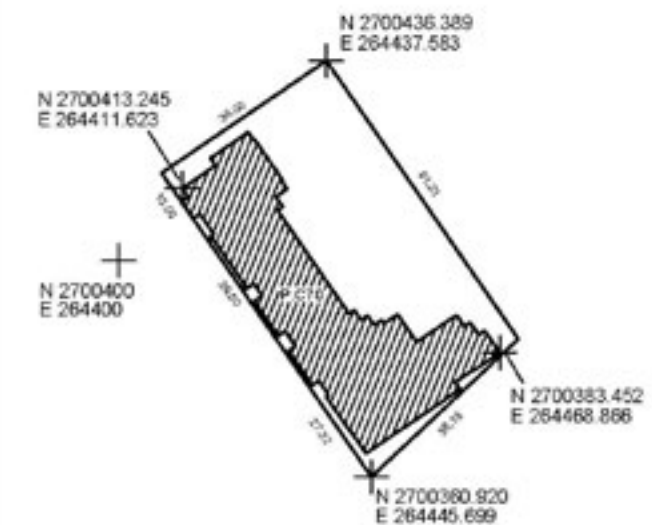


KEY LOCATION	
PROJECT NAME	Al Reeman - Phase 1
PREPARED BY	DIGITAL REALITY CORP L.L.C (REF: 2024)
SURVEY STATUS	NO
ISSUED ON	25/9/2025
BLDG NAME & NO.	Right Capital -1
ADM BUILDING NO.	1
SHEET	1 OF 1

UNIT SITE PLAN



LICENSE NO.: 202400097034



SITE PLAN
SCALE: 1:500

UNIT LOCATION IN BUILDING
موقع الوحدة في المبنى



FLOOR: 02
SCALE: NTS



Legend:

[Blue line]	Unit Boundary
[Orange fill]	ADUAMS2
[Red fill]	Ua (Balcony / Terrace)
[Blue fill]	Uc (Wards and Shafts)
[Grey fill]	DM / AIM
[White fill]	ADUAI = ADUAMS2 + Ua + Uc

- GENERAL NOTES:
- This plan is prepared by a registered surveyor, and the Total Unit Area specified in this Unit Site Plan is calculated according to Abu Dhabi Unit Area 1 (ADUAI), as specified in the Abu Dhabi Property Measurement Standards (ADPMS).
 - The architectural detail in this plan is based on Detail Design drawings, and final As-Built conditions may vary.
 - All architectural details are for illustrative purposes only.
 - ADUAI is identified as the Gross Saleable Area.

UNIT DETAIL
SCALE: NTS

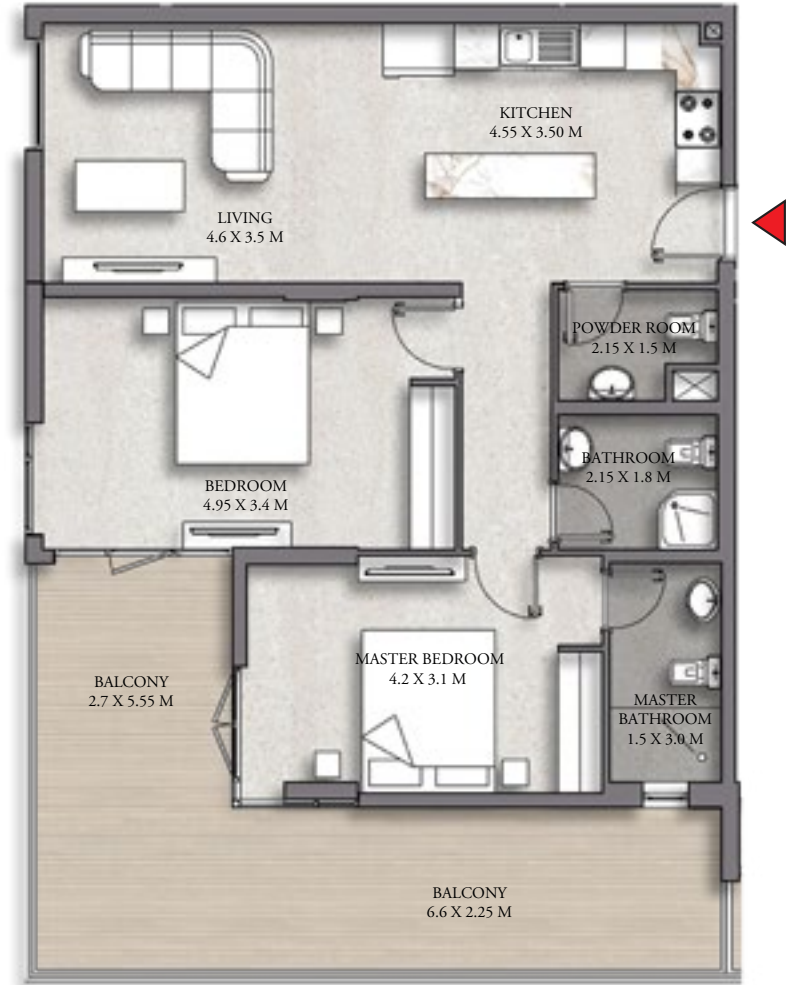
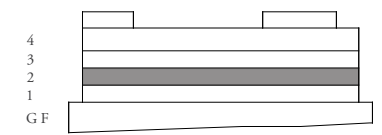
RIGHT CAPITAL 1
AL REEMAN LIVING

LEVEL 02 UNIT 206		
SUITE AREA	86.02 SQ.M	925.91 SQ.FT
BALCONY AREA	26.39 SQ.M	284.06 SQ.FT
TOTAL AREA	112.41 SQ.M	1,209.97 SQ.FT

KEY PLAN



KEY SECTION



FLOOR PLAN 1. All dimensions are in imperial and metric, and measured from finish to finish excluding construction tolerances. 2. All materials, dimensions, and drawings are approximate only. 3. Information is subject to change without notice, at developer's absolute discretion. 4. Actual area may vary from the stated area. 5. Drawings not to scale. 6. All images used are for illustrative purposes only and do not represent the actual size, features, specifications, fittings, and furnishings. 7. The developer reserves the right to make revisions / alterations, at it's absolute discretion, without any liability whatsoever.

UNIT DETAIL **بيانات الوحدة**

UNIT OWNER: Right Capital Real Estate Development Construction Establishment	مالك الوحدة: مؤسسة رائد كابيتال للتطوير العقاري للتأسيسات
UNIT NO: 207 (FLAT)	رقم الوحدة: 207 (شقة)
SUITE AREA (ADUAMS2-U): 50.79 SQ.M (546.70 SQ.FT)	مساحة الوحدة (ADUAMS2-U): 50.79 SQ.M (546.70 SQ.FT)
BALCONY AREA (Ua): 8.70 SQ.M (93.65 SQ.FT)	مساحة البلكونة (Ua): 8.70 SQ.M (93.65 SQ.FT)
TOTAL UNIT AREA (ADUAI): 59.49 SQ.M (640.35 SQ.FT)	المساحة الكلية (ADUAI): 59.49 SQ.M (640.35 SQ.FT)

Legend:

- Unit Boundary
- ADUAMS2
- Ua (Balcony / Terrace)
- Uc (Wards and Shafts)

GENERAL NOTES:

- This plan is prepared by a registered surveyor, and the Total Unit Area specified in this Unit Site Plan is calculated according to Abu Dhabi Unit Area 1 (ADUAI), as specified in the Abu Dhabi Property Measurement Standards (ADPMS).
- The architectural detail in this plan is based on Detail Design drawings, and final As-Built conditions may vary.
- All architectural details are for illustrative purposes only.
- ADUAI is identified as the Gross Saleable Area.

UNIT DETAIL
SCALE: NTS

SITE PLAN
SCALE: 1:500

UNIT LOCATION IN BUILDING
CA = Common Area

FLOOR 02
SCALE: NTS

RIGHT CAPITAL
رئيس كابيتال للتطوير العقاري
REAL ESTATE DEVELOPMENT

KEY LOCATION

PROJECT NAME: Al Reeman - Phase 1
 PREPARED BY: DIGITAL REALITY CORP L.L.C (REF: 2024)
 SURVEY STATUS: NO
 ISSUED ON: 25/01/2025
 BLDG NAME & NO: Right Capital -1
 ADM BUILDING NO: 1
 SHEET: 1 OF 1

UNIT SITE PLAN
KEY PLAN

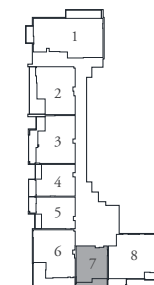
LICENSE NO: 20240007934

RIGHT CAPITAL 1

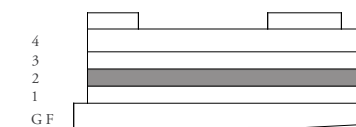
AL REEMAN LIVING

	LEVEL 02	UNIT 207
SUITE AREA	50.79 SQ.M	546.70 SQ.FT
BALCONY AREA	8.70 SQ.M	93.65 SQ.FT
TOTAL AREA	59.49 SQ.M	640.35 SQ.FT

KEY PLAN



KEY SECTION



KITCHEN 3.5 X 4.55 M

LIVING 3.5 X 3.35 M

BEDROOM 3.15 X 4.3 M

BALCONY 6.85 X 1.35 M

POWDER ROOM 1.4 X 2.1 M

BATHROOM 1.75 X 1.8 M

FLOOR PLAN 1. All dimensions are in imperial and metric, and measured from finish to finish excluding construction tolerances. 2. All materials, dimensions, and drawings are approximate only. 3. Information is subject to change without notice, at developer's absolute discretion. 4. Actual area may vary from the stated area. 5. Drawings not to scale. 6. All images used are for illustrative purposes only and do not represent the actual size, features, specifications, fittings, and furnishings. 7. The developer reserves the right to make revisions / alterations, at it's absolute discretion, without any liability whatsoever.

UNIT DETAIL		بيانات الوحدة	
UNIT OWNER	Right Capital Real Estate Development Construction Establishment	مالك الوحدة	مؤسسة رأيت كابيتال للتطوير العقاري للتأسيسات
UNIT NO:	208 (FLAT)	رقم الوحدة:	208 (شقة)
SUITE AREA (ADUAMS2-U)	102.72 SQ.M (1,105.87 SQ.FT)	مساحة الوحدة (ADUAMS2-U)	
BALCONY AREA (Ua)	20.64 SQ.M (222.17 SQ.FT)	مساحة البلكونة (Ua)	
TOTAL UNIT AREA (ADUAI)	123.36 SQ.M (1,327.84 SQ.FT)	المساحة الكلية (ADUAI)	

Legend:

- Unit Boundary
- ADUAMS2
- Ua (Balcony / Terrace)
- Uc (Wards and Shafts)

GENERAL NOTES:

- This plan is prepared by a registered surveyor, and the Total Unit Area specified in this Unit Site Plan is calculated according to Abu Dhabi Unit Area 1 (ADUAI), as specified in the Abu Dhabi Property Measurement Standards (ADPMS).
- The architectural detail in this plan is based on Detail Design drawings, and final As-Built conditions may vary.
- All architectural details are for illustrative purposes only.
- ADUAI is identified as the Gross Saleable Area.

UNIT DETAIL SCALE: NTS

SITE PLAN SCALE: 1:500

UNIT LOCATION IN BUILDING موقع الوحدة في المبنى

CA = Common Area

FLOOR 02 SCALE: NTS

RIGHT CAPITAL REAL ESTATE DEVELOPMENT

PLOT NO:	C70	رقم القطعة	C70
ZONE:	Al Shamsiyah	المنطقة	الشمسية
SECTOR:	SH06	القطاع	SH06
USAGE TYPE:	COMMERCIAL	نوع الاستخدام	تجاري
TOTAL AREA:	2,304.26 SQ.M (24,802.85 SQ.FT)	مساحة الكلية	2,304.26 (24,802.85)

KEY LOCATION

PROJECT NAME: Al Reeman - Phase 1
 PREPARED BY: DIGITAL REALITY CORP L.L.C (REF: 2024)
 SURVEY STATUS: NO
 ISSUED ON: 25/01/2025
 BLDG NAME & NO.: Right Capital -1
 ADM BUILDING NO.: 1
 SHEET: 1 OF 1

UNIT SITE PLAN

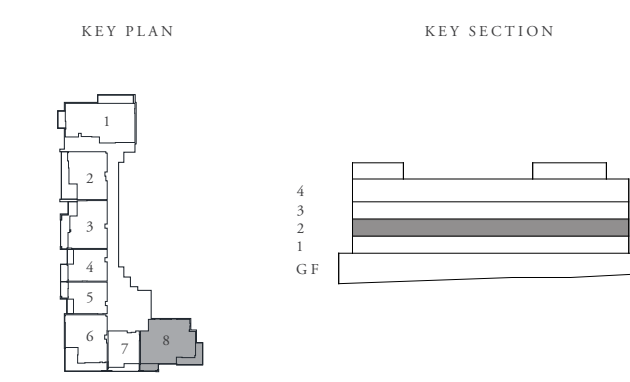
KEY PLAN

LICENSE NO.: 202400097934

RIGHT CAPITAL 1

AL REEMAN LIVING

	LEVEL 02	UNIT 208
SUITE AREA	102.72 SQ.M	1,105.67 SQ.FT
BALCONY AREA	20.64 SQ.M	222.17 SQ.FT
TOTAL AREA	123.36 SQ.M	1,327.84 SQ.FT



FLOOR PLAN 1. All dimensions are in imperial and metric, and measured from finish to finish excluding construction tolerances. 2. All materials, dimensions, and drawings are approximate only. 3. Information is subject to change without notice, at developer's absolute discretion. 4. Actual area may vary from the stated area. 5. Drawings not to scale. 6. All images used are for illustrative purposes only and do not represent the actual size, features, specifications, fittings, and furnishings. 7. The developer reserves the right to make revisions / alterations, at it's absolute discretion, without any liability whatsoever.

UNIT DETAIL		بيانات الوحدة	
UNIT OWNER	Right Capital Real Estate Development Construction/Establishment	مالك الوحدة	مؤسسة رائد كابيتال للتطوير العقاري للتأسيسات
UNIT NO:	301 (FLAT)	رقم الوحدة:	301 (شقة)
SUITE AREA (ADUAMS2-U)	121.07 SQ.M (1,303.19 SQ.FT)	مساحة الوحدة (ADUAMS2-U)	
BALCONY AREA (Ua)	20.86 SQ.M (224.53 SQ.FT)	مساحة التراسوة (Ua)	
TOTAL UNIT AREA (ADUAT)	141.93 SQ.M (1,527.72 SQ.FT)	المساحة الكلية (ADUAT)	

Legend:

- Unit Boundary
- ADUAMS2
- Ua (Balcony / Terrace)
- Uc (Wards and Shafts)

Legend:

- UAM / AUM
- ADUAT = ADUAMS2 + Ua + Uc

GENERAL NOTES:

- This plan is prepared by a registered surveyor, and the Total Unit Area specified in this Unit Site Plan is calculated according to Abu Dhabi Unit Area 1 (ADUATs), as specified in the Abu Dhabi Property Measurement Standards (ADPMS).
- The architectural detail in this plan is based on Detail Design drawings, and final As-Built conditions may vary.
- All architectural details are for illustrative purposes only.
- ADUAT is identified as the Gross Saleable Area.

UNIT DETAIL
SCALE: NTS

SITE PLAN
SCALE: 1:500

UNIT LOCATION IN BUILDING
Scale: NTS

CA = Common Area

FLOOR 03
SCALE: NTS

RIGHT CAPITAL
رئيس كابيتال للتطوير العقاري
REAL ESTATE DEVELOPMENT

PLOT NO:	C70	رقم القطعة:	C70
ZONE:	Al Shamsiah	المنطقة:	الشمسية
SECTOR:	SH06	القطاع:	SH06
USAGE TYPE:	COMMERCIAL	نوع الاستخدام:	تجاري
TOTAL AREA:	2,304.26 SQ.M (24,802.85 SQ.FT)	مساحة الكلية:	2,304.26 متر مربع (24,802.85 قدم مربع)

KEY LOCATION

PROJECT NAME: Al Reeman - Phase 1
 PREPARED BY: DIGITAL REALITY CORP L.L.C (REF: 2024)
 SURVEY STATUS: NO
 ISSUED ON: 25/01/2025
 BLDG NAME & NO: Right Capital -1
 ADM BUILDING NO: 1
 SHEET: 1 OF 1

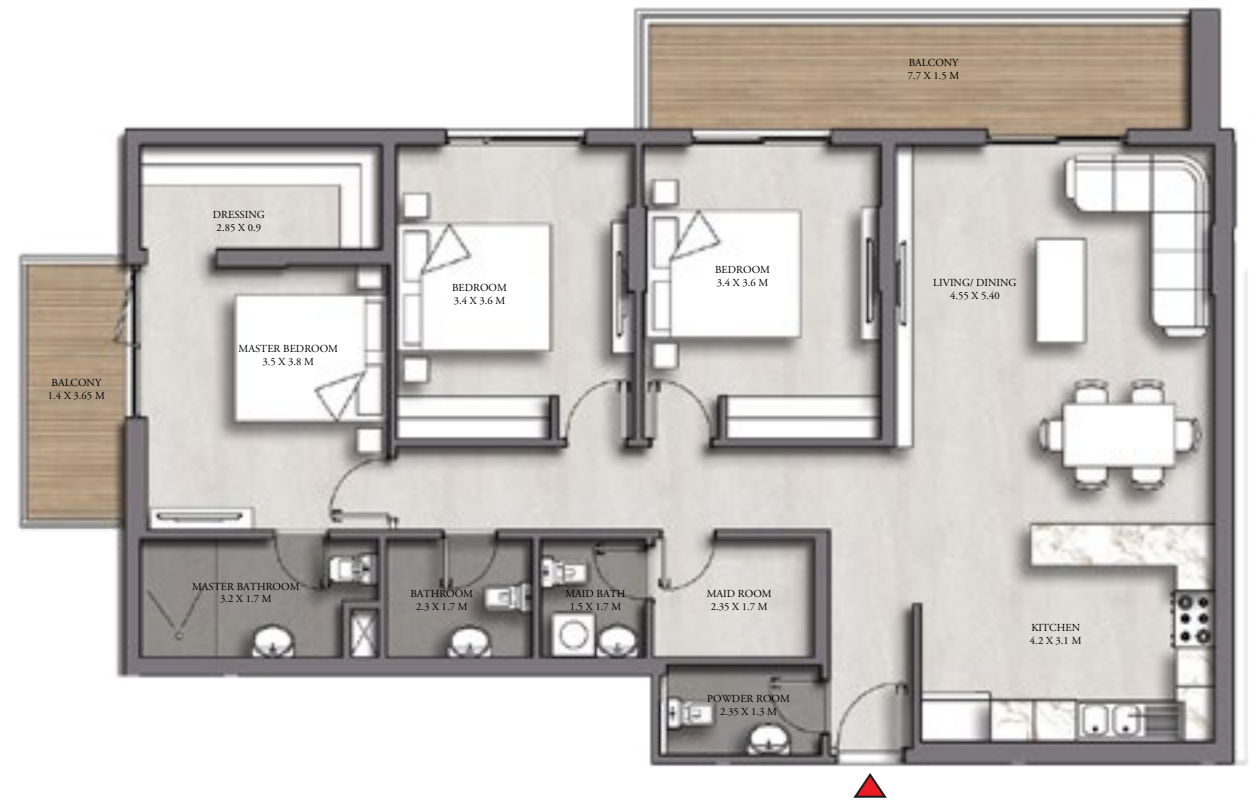
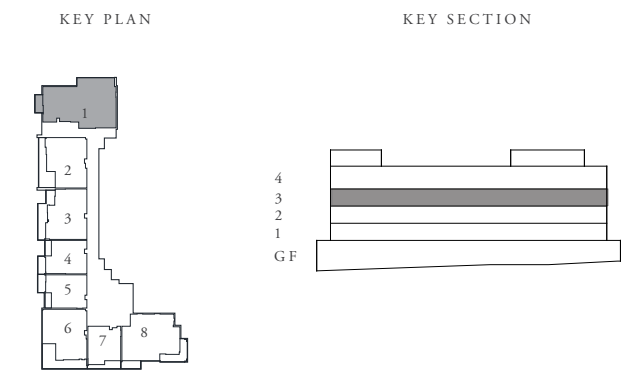
UNIT SITE PLAN
KEY PLAN

LICENSE NO.: 200400097934

RIGHT CAPITAL 1

AL REEMAN LIVING

	LEVEL 03	UNIT 301
SUITE AREA	121.07 SQ.M	1,303.19 SQ.FT
BALCONY AREA	20.86 SQ.M	224.53 SQ.FT
TOTAL AREA	141.93 SQ.M	1,527.72 SQ.FT



FLOOR PLAN 1. All dimensions are in imperial and metric, and measured from finish to finish excluding construction tolerances. 2. All materials, dimensions, and drawings are approximate only. 3. Information is subject to change without notice, at developer's absolute discretion. 4. Actual area may vary from the stated area. 5. Drawings not to scale. 6. All images used are for illustrative purposes only and do not represent the actual size, features, specifications, fittings, and furnishings. 7. The developer reserves the right to make revisions / alterations, at it's absolute discretion, without any liability whatsoever.



UNIT DETAIL **بيانات الوحدة**

UNIT OWNER: Right Capital Real Estate Development Construction Establishment	مالك الوحدة: مؤسسة رائد كابيتال للتطوير العقاري للتأسيسات
UNIT NO: 302 (FLAT)	رقم الوحدة: 302 (شقة)
SUITE AREA (ADUAMS2-U): 81.10 SQ.M (872.95 SQ.FT)	مساحة الوحدة (ADUAMS2-U): 81.10 SQ.M (872.95 SQ.FT)
BALCONY AREA (Ua): 22.23 SQ.M (239.28 SQ.FT)	مساحة البلكونة (Ua): 22.23 SQ.M (239.28 SQ.FT)
TOTAL UNIT AREA (ADUAI): 103.33 SQ.M (1,112.23 SQ.FT)	المساحة الكلية (ADUAI): 103.33 SQ.M (1,112.23 SQ.FT)

Legend:
 Unit Boundary
 ADUAMS2
 Ua (Balcony / Terrace)
 Uc (Wards and Shafts)
 DM / AIM
 ADUAI = ADUAMS2 + Ua + Uc

GENERAL NOTES:
 1. This plan is prepared by a registered surveyor, and the Total Unit Area specified in this Unit Site Plan is calculated according to the Abu Dhabi Unit Area 1 (ADUAI), as specified in the Abu Dhabi Property Measurement Standards (ADPMS).
 2. The architectural detail in this plan is based on Detail Design drawings, and final As-Built conditions may vary.
 3. All architectural details are for illustrative purposes only.
 4. ADUAI is identified as the Gross Saleable Area.

UNIT DETAIL SCALE: NTS

SITE PLAN
SCALE: 1:500

UNIT LOCATION IN BUILDING **موقع الوحدة في المبنى**

CA = Common Area

FLOOR 03
SCALE: NTS

RIGHT CAPITAL
رئيس كابيتال للتطوير العقاري
REAL ESTATE DEVELOPMENT

KEY LOCATION

PROJECT NAME: Al Reeman - Phase 1
 PREPARED BY: DIGITAL REALITY CORP L.L.C (REF: 2024)
 SURVEY STATUS: NO
 ISSUED ON: 25/01/2025
 BLDG NAME & NO: Right Capital -1
 ADM BUILDING NO: 1
 SHEET: 1 OF 1

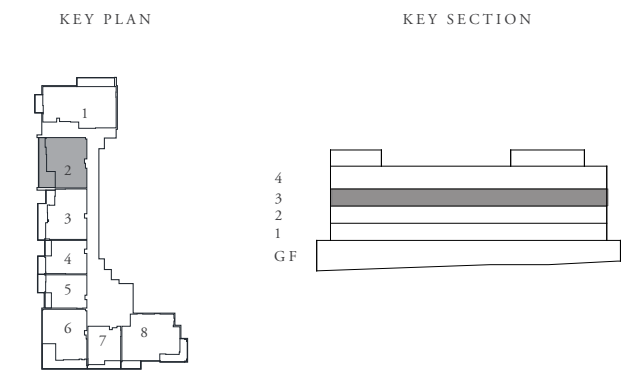
UNIT SITE PLAN
KEY PLAN

KEY SECTION

UNIT SITE PLAN SCALE: NTS

RIGHT CAPITAL 1
AL REEMAN LIVING

	LEVEL 03	UNIT 302
SUITE AREA	81.10 SQ.M	872.95 SQ.FT
BALCONY AREA	22.23 SQ.M	239.28 SQ.FT
TOTAL AREA	103.33 SQ.M	1,112.23 SQ.FT



RIGHT CAPITAL
رايت كابيتال للتطوير العقاري
REAL ESTATE DEVELOPMENT

FLOOR PLAN 1. All dimensions are in imperial and metric, and measured from finish to finish excluding construction tolerances. 2. All materials, dimensions, and drawings are approximate only. 3. Information is subject to change without notice, at developer's absolute discretion. 4. Actual area may vary from the stated area. 5. Drawings not to scale. 6. All images used are for illustrative purposes only and do not represent the actual size, features, specifications, fittings, and furnishings. 7. The developer reserves the right to make revisions / alterations, at it's absolute discretion, without any liability whatsoever.

UNIT DETAIL		بيانات الوحدة	
UNIT OWNER: Right Capital Real Estate Development Construction Establishment		ملاك الوحدة: مؤسسة رائد كابيتال للتطوير العقاري للتأسيسات	
UNIT NO: 303 (FLAT)		رقم الوحدة: 303 (شقة)	
SUITE AREA (ADUAMS2-U): 80.88 SQ.M (870.59 SQ.FT)		مساحة الوحدة (شقة): 80.88 متر مربع (870.59 متر مربع)	
BALCONY AREA (Ua): 19.62 SQ.M (211.85 SQ.FT)		مساحة التراسات (Ua): 19.62 متر مربع (211.85 متر مربع)	
TOTAL UNIT AREA (ADUAI): 100.50 SQ.M (1,081.77 SQ.FT)		المساحة الكلية (ADUAI): 100.50 متر مربع (1,081.77 متر مربع)	

Legend:

- Unit Boundary
- ADUAMS2
- Ua (Balcony / Terrace)
- Uc (Ponds and Shafts)

Legend:

- UAM / AUM
- ADUAI = ADUAMS2 + Ua + Uc

GENERAL NOTES:

- This plan is prepared by a registered surveyor, and the Total Unit Area specified in this Unit Site Plan is calculated according to Abu Dhabi Unit Area 1 (ADUAI), as specified in the Abu Dhabi Property Measurement Standards (ADPMS).
- The architectural detail in this plan is based on Detail Design drawings, and final As-Built conditions may vary.
- All architectural details are for illustrative purposes only.
- ADUAI is identified as the Gross Saleable Area.

UNIT DETAIL
SCALE: NTS

SITE PLAN
SCALE: 1:500

UNIT LOCATION IN BUILDING
Scale: NTS

CA = Common Area

FLOOR 03
SCALE: NTS

RIGHT CAPITAL
رئيس كابيتال للتطوير العقاري
REAL ESTATE DEVELOPMENT

PLOT NO:	C70	رقم القطعة:	C70
ZONE:	Al Shamsiah	المنطقة:	Al Shamsiah
SECTOR:	SH06	القطاع:	SH06
USAGE TYPE:	COMMERCIAL	نوع الاستخدام:	تجاري
TOTAL AREA:	2,304.26 SQ.M (24,802.85 SQ.FT)	المساحة الكلية:	2,304.26 متر مربع (24,802.85 متر مربع)

KEY LOCATION

PROJECT NAME: Al Reeman - Phase 1
 PREPARED BY: DIGITAL REALITY CORP L.L.C (REF: 2024)
 SURVEY STATUS: NO
 ISSUED ON: 25/01/2025
 BLDG NAME & NO: Right Capital -1
 ADM BUILDING NO: 1
 SHEET: 1 OF 1

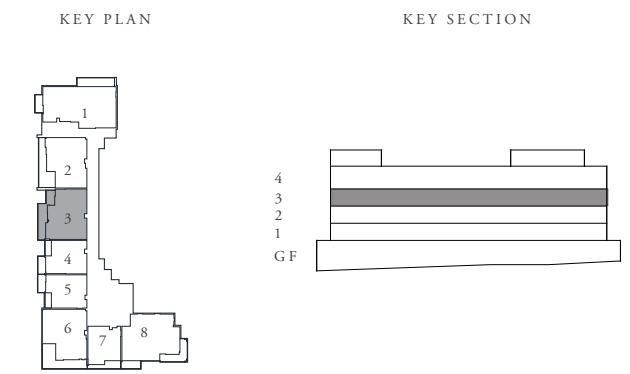
UNIT SITE PLAN
KEY PLAN

LICENSE NO.: 200400097034

RIGHT CAPITAL 1

AL REEMAN LIVING

	LEVEL 03	UNIT 303
SUITE AREA	80.88 SQ.M	870.59 SQ.FT
BALCONY AREA	19.62 SQ.M	211.18 SQ.FT
TOTAL AREA	100.50 SQ.M	1,081.77 SQ.FT



FLOOR PLAN 1. All dimensions are in imperial and metric, and measured from finish to finish excluding construction tolerances. 2. All materials, dimensions, and drawings are approximate only. 3. Information is subject to change without notice, at developer's absolute discretion. 4. Actual area may vary from the stated area. 5. Drawings not to scale. 6. All images used are for illustrative purposes only and do not represent the actual size, features, specifications, fittings, and furnishings. 7. The developer reserves the right to make revisions / alterations, at it's absolute discretion, without any liability whatsoever.

UNIT DETAIL		بيانات الوحدة	
UNIT OWNER	Right Capital Real Estate Development Construction Establishment	مالك الوحدة	مؤسسة رأسية للتطوير العقاري للتأسيسات
UNIT NO: 304 (FLAT)		رقم الوحدة: 304 (شقة)	
SUITE AREA (ADUAMS2-U)	54.88 SQ.M (590.72 SQ.FT)	مساحة الوحدة (ADUAMS2-U)	
BALCONY AREA (Ua)	10.41 SQ.M (112.06 SQ.FT)	مساحة التراسوة (Ua)	
TOTAL UNIT AREA (ADUAT)	65.29 SQ.M (702.78 SQ.FT)	المساحة الكلية (ADUAT)	

Legend:

- Unit Boundary
- ADUAMS2
- Ua (Balcony / Terrace)
- Uc (Wards and Shafts)

DM / ALM
ADUAT = ADUAMS2 + Ua + Uc

GENERAL NOTES:

- This plan is prepared by a registered surveyor, and the Total Unit Area specified in this Unit Site Plan is calculated according to Abu Dhabi Unit Area 1 (ADUATs), as specified in the Abu Dhabi Property Measurement Standards (ADPMS).
- The architectural detail in this plan is based on Detail Design drawings, and final As-Built conditions may vary.
- All architectural details are for illustrative purposes only.
- ADUAT is identified as the Gross Saleable Area.

UNIT DETAIL
SCALE: NTS

SITE PLAN
SCALE: 1:500

UNIT LOCATION IN BUILDING
موقع الوحدة في المبنى

CA = Common Area

FLOOR 03
SCALE: NTS

PLOT NO:	C70	رقم القطعة
ZONE:	Al Shamsiah	المنطقة
SECTOR:	SH06	القطاع
USAGE TYPE:	COMMERCIAL	نوع الاستخدام
TOTAL AREA:	2,304.26 SQ.M (24,802.85 SQ.FT)	إجمالي المساحة
	(مساحة مخطط: 24,802.85 متر مربع / مساحه: 2,304.26)	

KEY LOCATION

PROJECT NAME: Al Reeman - Phase 1
 PREPARED BY: DIGITAL REALITY CORP L.L.C (REF: 2024)
 SURVEY STATUS: NO
 ISSUED ON: 25/01/2025
 BLDG NAME & NO: Right Capital -1
 ADM BUILDING NO: 1
 SHEET: 1 OF 1

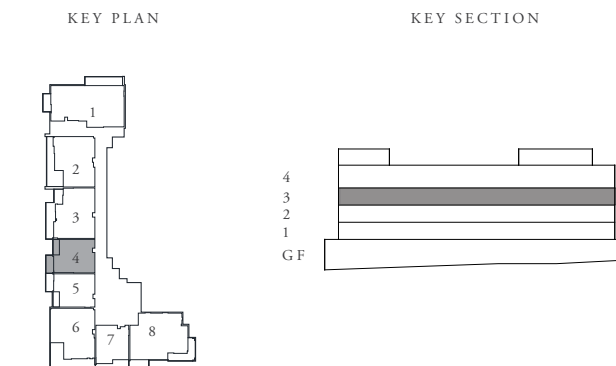
UNIT SITE PLAN
KEY PLAN

LICENSE NO.: 200400007934

RIGHT CAPITAL 1

AL REEMAN LIVING

	LEVEL 03	UNIT 304
SUITE AREA	54.88 SQ.M	590.72 SQ.FT
BALCONY AREA	10.41 SQ.M	112.06 SQ.FT
TOTAL AREA	65.29 SQ.M	702.78 SQ.FT



FLOOR PLAN 1. All dimensions are in imperial and metric, and measured from finish to finish excluding construction tolerances. 2. All materials, dimensions, and drawings are approximate only. 3. Information is subject to change without notice, at developer's absolute discretion. 4. Actual area may vary from the stated area. 5. Drawings not to scale. 6. All images used are for illustrative purposes only and do not represent the actual size, features, specifications, fittings, and furnishings. 7. The developer reserves the right to make revisions / alterations, at it's absolute discretion, without any liability whatsoever.

UNIT DETAIL		بيانات الوحدة	
UNIT OWNER	Right Capital Real Estate Development Construction Establishment	مالك الوحدة	مؤسسة رائد كابيتال للتطوير العقاري للتأسيسات
UNIT NO: 305 (FLAT)		رقم الوحدة: 305 (شقة)	
SUITE AREA (ADUAMS2-U)	54.79 SQ.M (589.75 SQ.FT)	مساحة الوحدة (ADUAMS2-U)	
BALCONY AREA (Ua)	10.43 SQ.M (112.27 SQ.FT)	مساحة التراسوة (Ua)	
TOTAL UNIT AREA (ADUAI)	65.22 SQ.M (702.02 SQ.FT)	المساحة الكلية (ADUAI)	

Legend:

- Unit Boundary
- ADUAMS2
- Ua (Balcony / Terrace)
- Uc (Wards and Shafts)

GENERAL NOTES:

- This plan is prepared by a registered surveyor, and the Total Unit Area specified in this Unit Site Plan is calculated according to Abu Dhabi Unit Area 1 (ADUAI), as specified in the Abu Dhabi Property Measurement Standards (ADPMS).
- The architectural detail in this plan is based on Detail Design drawings, and final As-Built conditions may vary.
- All architectural details are for illustrative purposes only.
- ADUAI is identified as the Gross Saleable Area.

UNIT DETAIL SCALE: NTS

SITE PLAN SCALE: 1:500

UNIT LOCATION IN BUILDING موقع الوحدة في المبنى

CA = Common Area

FLOOR 03 SCALE: NTS

RIGHT CAPITAL REAL ESTATE DEVELOPMENT

PLOT NO	C70	رقم القطعة
ZONE	Al Shamsiyah	المنطقة
SECTOR	SH06	القطاع
USAGE TYPE	COMMERCIAL	نوع الاستخدام
TOTAL AREA	2,304.26 SQ.M (24,802.85 SQ.FT)	إجمالي المساحة
	(مساحة الأرض: 24,802.85 متر مربع / مساحة البناء: 2,304.26 متر مربع)	

KEY LOCATION

PROJECT NAME: Al Reeman - Phase 1
 PREPARED BY: DIGITAL REALITY CORP L.L.C (REF: 2024)
 SURVEY STATUS: NO
 ISSUED ON: 25/01/2025
 BLDG NAME & NO: Right Capital -1
 ADM BUILDING NO: 1
 SHEET: 1 OF 1

UNIT SITE PLAN

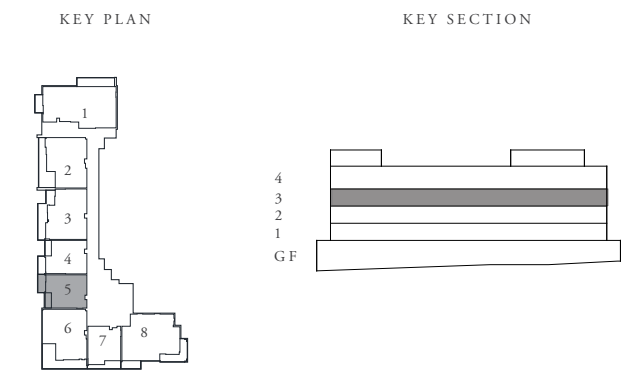
KEY PLAN

LICENSE NO.: 200400097934

RIGHT CAPITAL 1

AL REEMAN LIVING

	LEVEL 03	UNIT 305
SUITE AREA	54.79 SQ.M	589.75 SQ.FT
BALCONY AREA	10.43 SQ.M	112.27 SQ.FT
TOTAL AREA	65.22 SQ.M	702.02 SQ.FT



FLOOR PLAN 1. All dimensions are in imperial and metric, and measured from finish to finish excluding construction tolerances. 2. All materials, dimensions, and drawings are approximate only. 3. Information is subject to change without notice, at developer's absolute discretion. 4. Actual area may vary from the stated area. 5. Drawings not to scale. 6. All images used are for illustrative purposes only and do not represent the actual size, features, specifications, fittings, and furnishings. 7. The developer reserves the right to make revisions / alterations, at it's absolute discretion, without any liability whatsoever.

UNIT DETAIL		بيانات الوحدة	
UNIT OWNER: Right Capital Real Estate Development Construction/Establishment		ملاك الوحدة: مؤسسة رائد كابيتال للتطوير العقاري للتأسيسات	
UNIT NO: 306 (FLAT)		رقم الوحدة: 306 (شقة)	
SUITE AREA (ADUAMS2-U): 86.81 SQ.M (934.42 SQ.FT)		مساحة الوحدة (ADUAMS2-U): 86.81 SQ.M (934.42 SQ.FT)	
BALCONY AREA (Ua): 26.48 SQ.M (285.02 SQ.FT)		مساحة البلكونة (Ua): 26.48 SQ.M (285.02 SQ.FT)	
TOTAL UNIT AREA (ADUAI): 113.29 SQ.M (1,219.44 SQ.FT)		المساحة الكلية (ADUAI): 113.29 SQ.M (1,219.44 SQ.FT)	

Legend:

- Unit Boundary
- ADUAMS2
- Ua (Balcony / Terrace)
- Uc (Funds and Shafts)

DM / AIM
ADUAI = ADUAMS2 + Ua + Uc

GENERAL NOTES:

- This plan is prepared by a registered surveyor, and the Total Unit Area specified in this Unit Site Plan is calculated according to Abu Dhabi Unit Area 1 (ADUAI), as specified in the Abu Dhabi Property Measurement Standards (ADPMS).
- The architectural detail in this plan is based on Detail Design drawings, and final As-Built conditions may vary.
- All architectural details are for illustrative purposes only.
- ADUAI is identified as the Gross Saleable Area.

UNIT DETAIL
SCALE: NTS

SITE PLAN
SCALE: 1:500

UNIT LOCATION IN BUILDING
SCALE: NTS

CA = Common Area

FLOOR 03
SCALE: NTS

RIGHT CAPITAL
رايد كابيتال للتطوير العقاري
REAL ESTATE DEVELOPMENT

PLOT NO:	C70	رقم القطعة:	C70
ZONE:	Al Shamsiyah	المنطقة:	الشمسية
SECTOR:	SH06	القطاع:	SH06
USAGE TYPE:	COMMERCIAL	نوع الاستخدام:	تجاري
TOTAL AREA:	2,304.26 SQ.M (24,802.85 SQ.FT)	المساحة الكلية:	2,304.26 SQ.M (24,802.85 SQ.FT)
		مساحة البناء (مساحة مبنية):	2,304.26

KEY LOCATION

PROJECT NAME: Al Reeman - Phase 1
 PREPARED BY: DIGITAL REALITY CORP L.L.C (REF: 2024)
 SURVEY STATUS: NO
 ISSUED ON: 25/9/2025
 BLDG NAME & NO: Right Capital -1
 ADM BUILDING NO: 1
 SHEET: 1 OF 1

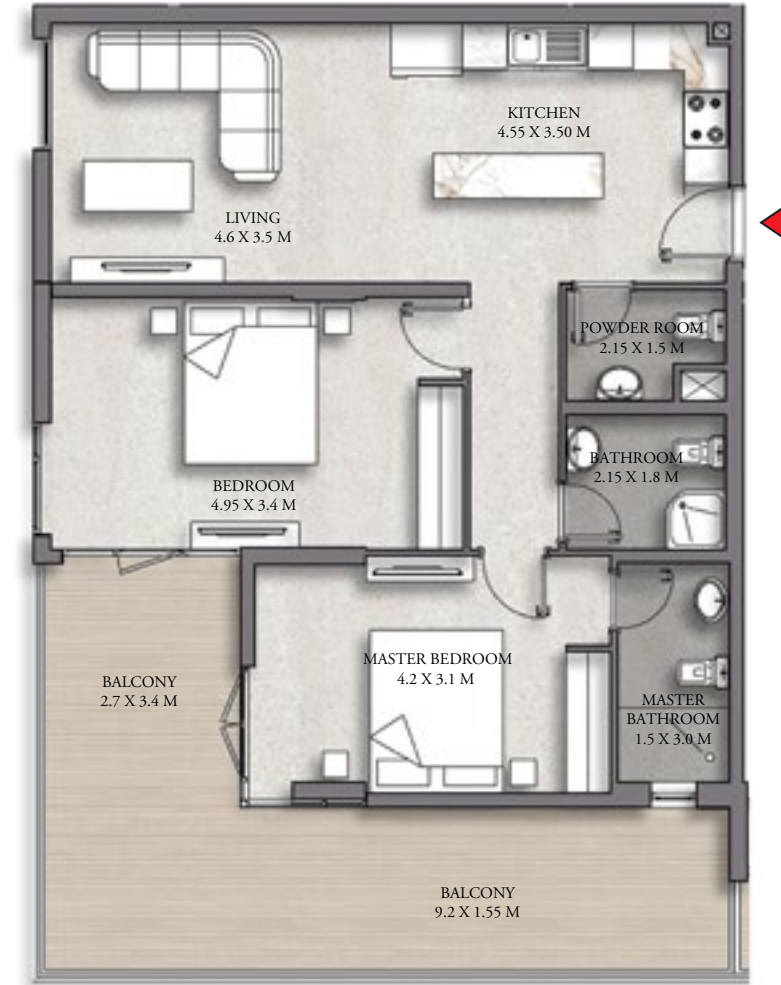
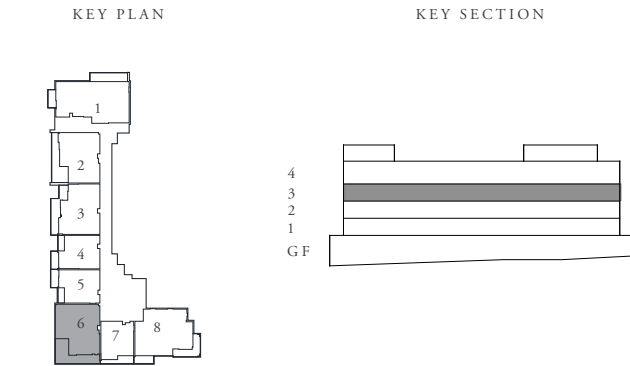
UNIT SITE PLAN
KEY PLAN

LICENSE NO.: 200400097934

RIGHT CAPITAL 1

AL REEMAN LIVING

	LEVEL 03	UNIT 306
SUITE AREA	86.81 SQ.M	934.42 SQ.FT
BALCONY AREA	26.48 SQ.M	285.02 SQ.FT
TOTAL AREA	113.29 SQ.M	1,219.44 SQ.FT



FLOOR PLAN 1. All dimensions are in imperial and metric, and measured from finish to finish excluding construction tolerances. 2. All materials, dimensions, and drawings are approximate only. 3. Information is subject to change without notice, at developer's absolute discretion. 4. Actual area may vary from the stated area. 5. Drawings not to scale. 6. All images used are for illustrative purposes only and do not represent the actual size, features, specifications, fittings, and furnishings. 7. The developer reserves the right to make revisions / alterations, at it's absolute discretion, without any liability whatsoever.

UNIT DETAIL		بيانات الوحدة	
UNIT OWNER: Right Capital Real Estate Development Construction/Establishment		ملاك الوحدة: مؤسسة رايت كابيتال للتطوير العقاري للتأسيسات	
UNIT NO: 307 (FLAT)		رقم الوحدة: 307 (شقة)	
SUITE AREA (ADUAMS2-U): 50.73 SQ.M (546.05 SQ.FT)		مساحة الوحدة (ADUAMS2-U): 50.73 SQ.M (546.05 SQ.FT)	
BALCONY AREA (Ua): 8.52 SQ.M (91.71 SQ.FT)		مساحة البلكونة (Ua): 8.52 SQ.M (91.71 SQ.FT)	
TOTAL UNIT AREA (ADUAT): 59.25 SQ.M (637.76 SQ.FT)		المساحة الكلية (ADUAT): 59.25 SQ.M (637.76 SQ.FT)	

Legend:

- Unit Boundary
- ADUAMS2
- Ua (Balcony / Terrace)
- Uc (Wards and Shafts)

DM / ALM
ADUAT = ADUAMS2 + Ua + Uc

GENERAL NOTES:

- This plan is prepared by a registered surveyor, and the Total Unit Area specified in this Unit Site Plan is calculated according to Abu Dhabi Unit Area 1 (ADUATs), as specified in the Abu Dhabi Property Measurement Standards (ADPMS).
- The architectural detail in this plan is based on Detail Design drawings, and final As-Built conditions may vary.
- All architectural details are for illustrative purposes only.
- ADUAT is identified as the Gross Saleable Area.

UNIT DETAIL SCALE: NTS

SITE PLAN SCALE: 1:500

UNIT LOCATION IN BUILDING موقع الوحدة في المبنى

CA = Common Area

FLOOR 03 SCALE: NTS

RIGHT CAPITAL
رايت كابيتال للتطوير العقاري
REAL ESTATE DEVELOPMENT

PLOT NO:	C70	رقم القطعة:	C70
ZONE:	Al Shamsiyah	المنطقة:	الشمسية
SECTOR:	SH06	القطاع:	SH06
USAGE TYPE:	COMMERCIAL	نوع الاستخدام:	تجاري
TOTAL AREA:	2,304.26 SQ.M (24,802.85 SQ.FT)	إجمالي المساحة:	2,304.26 متر مربع (24,802.85 متر مربع)

KEY LOCATION

PROJECT NAME: Al Reeman - Phase 1
 PREPARED BY: DIGITAL REALITY CORP L.L.C (REF: 2024)
 SURVEY STATUS: NO
 ISSUED ON: 25/01/2025
 BLDG NAME & NO: Right Capital -1
 ADM BUILDING NO: 1
 SHEET: 1 OF 1

UNIT SITE PLAN

KEY PLAN

KEY SECTION

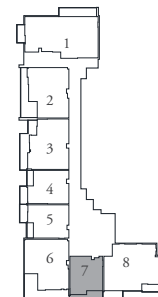
LICENSE NO.: 200400097934

RIGHT CAPITAL 1

AL REEMAN LIVING

	LEVEL 03	UNIT 307
SUITE AREA	50.73 SQ.M	546.05 SQ.FT
BALCONY AREA	8.52 SQ.M	91.71 SQ.FT
TOTAL AREA	59.25 SQ.M	637.76 SQ.FT

KEY PLAN

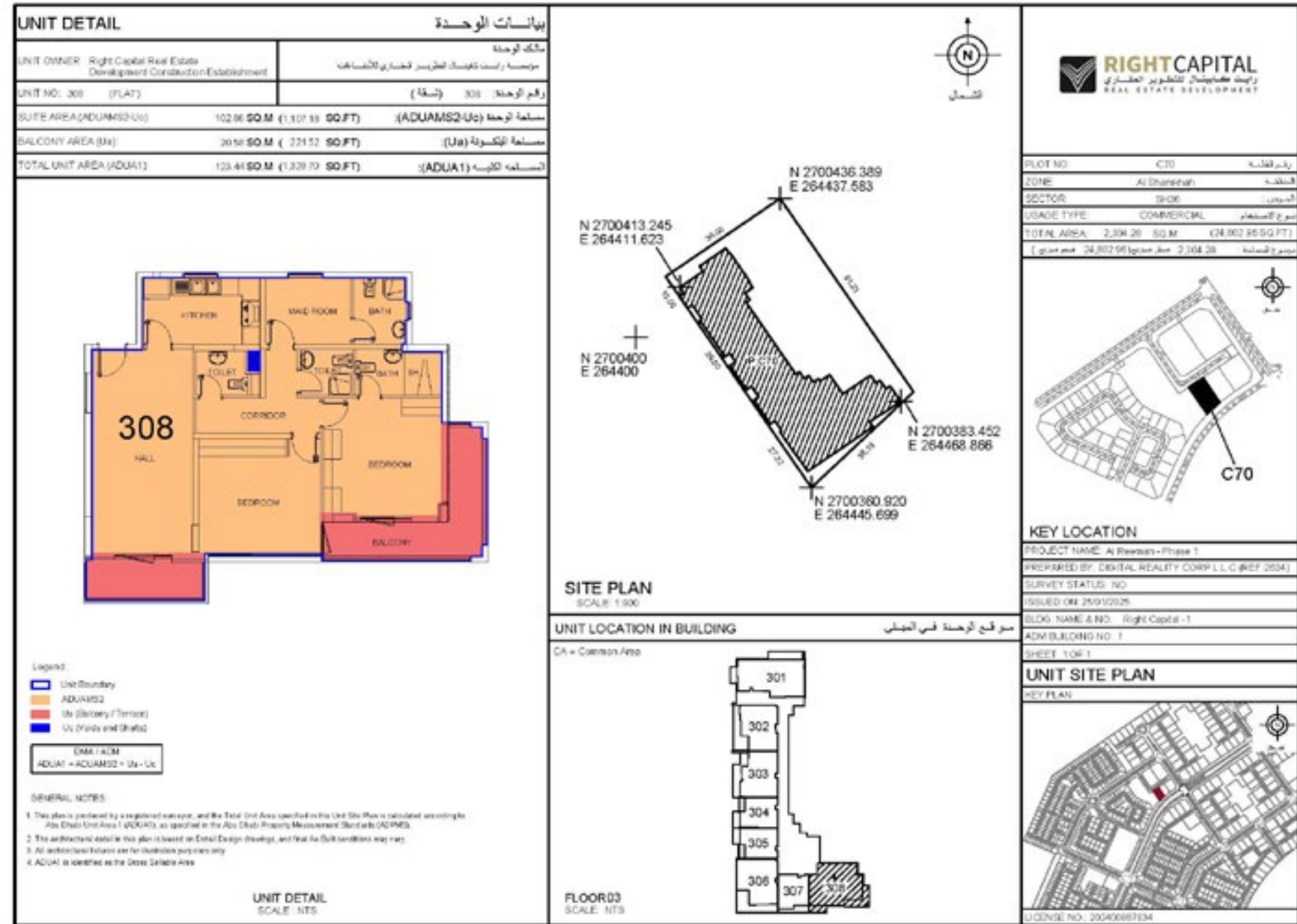


KEY SECTION



RIGHT CAPITAL
رايت كابيتال للتطوير العقاري
REAL ESTATE DEVELOPMENT

FLOOR PLAN 1. All dimensions are in imperial and metric, and measured from finish to finish excluding construction tolerances. 2. All materials, dimensions, and drawings are approximate only. 3. Information is subject to change without notice, at developer's absolute discretion. 4. Actual area may vary from the stated area. 5. Drawings not to scale. 6. All images used are for illustrative purposes only and do not represent the actual size, features, specifications, fittings, and furnishings. 7. The developer reserves the right to make revisions / alterations, at it's absolute discretion, without any liability whatsoever.

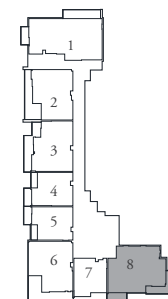


RIGHT CAPITAL 1

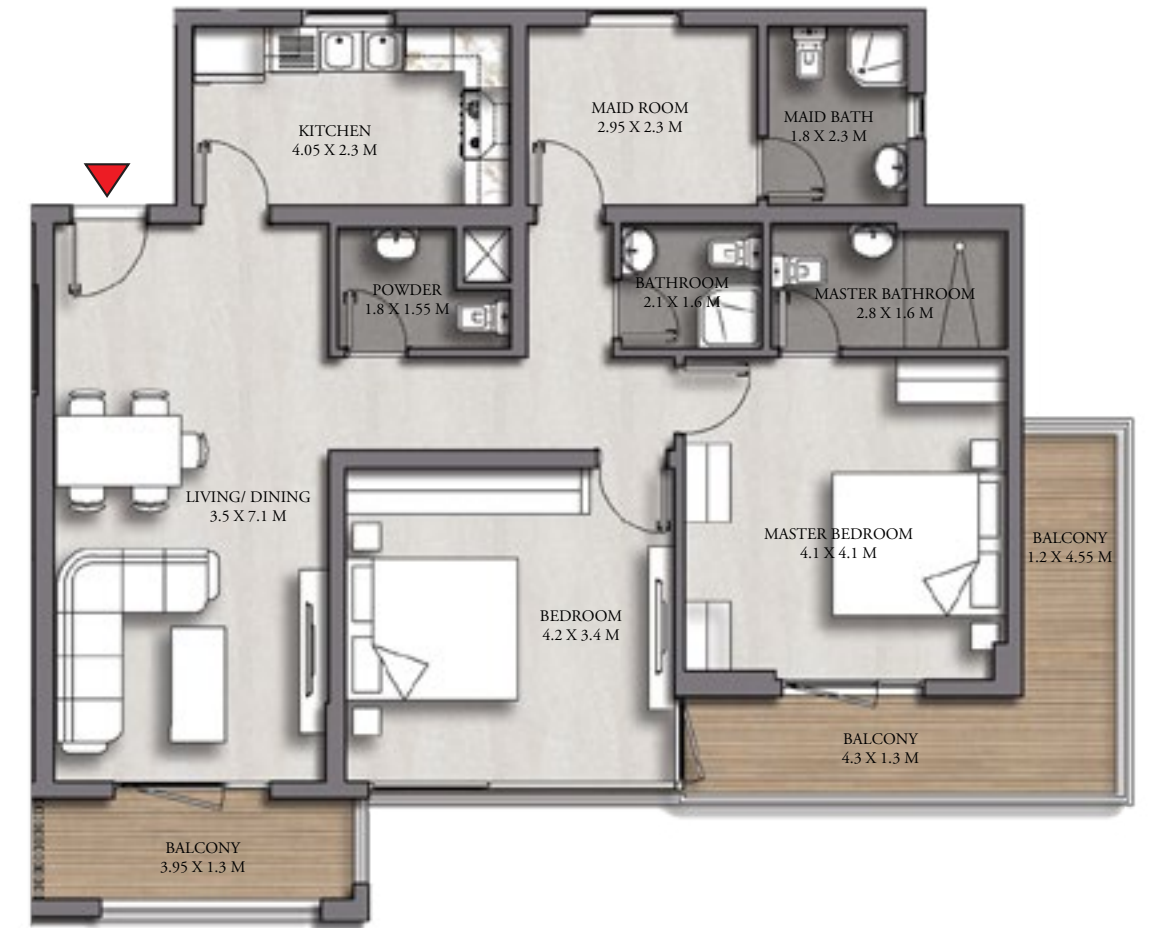
AL REEMAN LIVING

	LEVEL 03	UNIT 308
SUITE AREA	102.86 SQ.M	1,107.18 SQ.FT
BALCONY AREA	20.58 SQ.M	221.52 SQ.FT
TOTAL AREA	123.44 SQ.M	1,328.70 SQ.FT

KEY PLAN



KEY SECTION



FLOOR PLAN 1. All dimensions are in imperial and metric, and measured from finish to finish excluding construction tolerances. 2. All materials, dimensions, and drawings are approximate only. 3. Information is subject to change without notice, at developer's absolute discretion. 4. Actual area may vary from the stated area. 5. Drawings not to scale. 6. All images used are for illustrative purposes only and do not represent the actual size, features, specifications, fittings, and furnishings. 7. The developer reserves the right to make revisions / alterations, at it's absolute discretion, without any liability whatsoever.

UNIT DETAIL		بيانات الوحدة	
UNIT OWNER	Right Capital Real Estate Development Construction Establishment	مالك الوحدة	مؤسسة رائد كابيتال للتطوير العقاري للتأسيسات
UNIT NO: 401 (FLAT)		رقم الوحدة: 401 (شقة)	
SUITE AREA (ADUAMS2-U)	121.07 SQ.M (1,303.19 SQ.FT)	مساحة الوحدة (ADUAMS2-U)	
BALCONY AREA (Ba)	20.86 SQ.M (224.53 SQ.FT)	مساحة البلكونة (Ba)	
TOTAL UNIT AREA (ADUA1)	141.93 SQ.M (1,527.72 SQ.FT)	المساحة الكلية (ADUA1)	

Legend:
 - Unit Boundary
 - ADUAMS2
 - Ba (Balcony / Terrace)
 - U (Wards and Shafts)
 - DM / ADM
 - ADUA1 = ADUAMS2 + Ba + U

GENERAL NOTES:
 1. This plan is prepared by a registered surveyor, and the Total Unit Area specified in this Unit Site Plan is calculated according to Abu Dhabi Unit Area 1 (ADUAMS1), as specified in the Abu Dhabi Property Measurement Standards (ADPMS).
 2. The architectural detail in this plan is based on Detail Design drawings, and final As-Built conditions may vary.
 3. All architectural details are for illustrative purposes only.
 4. ADUA1 is identified as the Gross Saleable Area.

UNIT DETAIL SCALE: NTS

SITE PLAN SCALE: 1:500

UNIT LOCATION IN BUILDING
 CA = Common Area

FLOOR 04 SCALE: NTS

RIGHT CAPITAL REAL ESTATE DEVELOPMENT

PLOT NO:	C70	رقم القطعة
ZONE:	Al Sharafah	المنطقة
SECTOR:	SH06	القطاع
USAGE TYPE:	COMMERCIAL	نوع الاستخدام
TOTAL AREA:	2,304.26 SQ.M (24,802.85 SQ.FT)	إجمالي المساحة
	(مساحة مخطط: 24,802.85 متر مربع / مساحه مخطط: 2,304.26)	

KEY LOCATION
 PROJECT NAME: Al Reeman - Phase 1
 PREPARED BY: DIGITAL REALITY CORP L.L.C (REF: 2024)
 SURVEY STATUS: NO
 ISSUED ON: 25/01/2025
 BLDG NAME & NO: Right Capital -1
 ADM BUILDING NO: 1
 SHEET: 1 OF 1

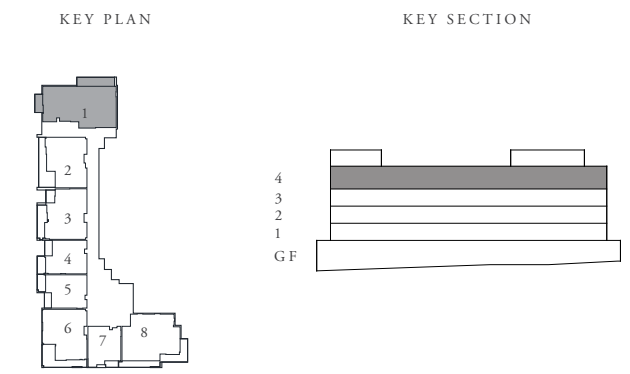
UNIT SITE PLAN
 KEY PLAN

LICENSE NO.: 202400097934

RIGHT CAPITAL 1

AL REEMAN LIVING


	LEVEL 04	UNIT 401
SUITE AREA	121.07 SQ.M	1,303.19 SQ.FT
BALCONY AREA	20.86 SQ.M	224.53 SQ.FT
TOTAL AREA	141.93 SQ.M	1,527.72 SQ.FT



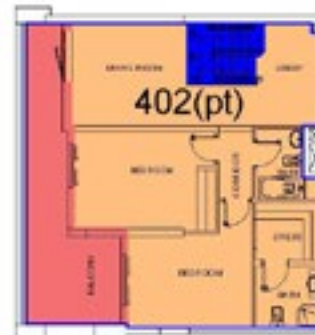
FLOOR PLAN 1. All dimensions are in imperial and metric, and measured from finish to finish excluding construction tolerances. 2. All materials, dimensions, and drawings are approximate only. 3. Information is subject to change without notice, at developer's absolute discretion. 4. Actual area may vary from the stated area. 5. Drawings not to scale. 6. All images used are for illustrative purposes only and do not represent the actual size, features, specifications, fittings, and furnishings. 7. The developer reserves the right to make revisions / alterations, at it's absolute discretion, without any liability whatsoever.



UNIT DETAIL		بيانات الوحدة	
UNIT OWNER	Right Capital Real Estate Development Construction Establishment	مالك الوحدة	مؤسسة رائت كابيتال للتطوير العقاري للتأسيسات
UNIT NO: 402 (FLAT)		رقم الوحدة: 402 (شقة)	
SUITE AREA (ADUAMS2-U)	156.26 SQ.M (1,681.97 SQ.FT)	مساحة الوحدة (ADUAMS2-U)	
BALCONY AREA (Ua)	44.45 SQ.M (478.45 SQ.FT)	مساحة التراسس (Ua)	
TOTAL UNIT AREA (ADUAI)	200.71 SQ.M (2,160.42 SQ.FT)	المساحة الكلية (ADUAI)	



FOURTH FLOOR



FIFTH FLOOR


Legend:

- Unit Boundary
- ADUAMS2
- Ua (Balcony / Terrace)
- Uc (Funds and Shafts)

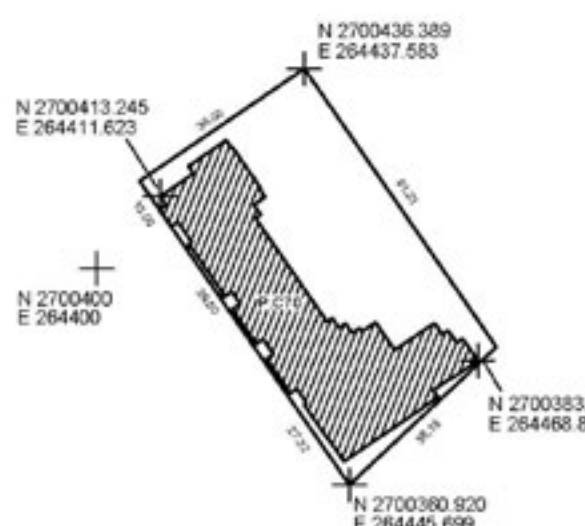
GENERAL NOTES:

- This plan is prepared by a registered surveyor, and the Total Unit Area specified in the Unit Site Plan is calculated according to Abu Dhabi Unit Area 1 (ADUAI), as specified in the Abu Dhabi Property Measurement Standards (ADPMS).
- The architectural detail in this plan is based on Detail Design drawings, and final built conditions may vary.
- All architectural details are for illustrative purposes only.
- ADUAI is identified as the Gross Saleable Area.

UNIT DETAIL
SCALE: NTS



شمال

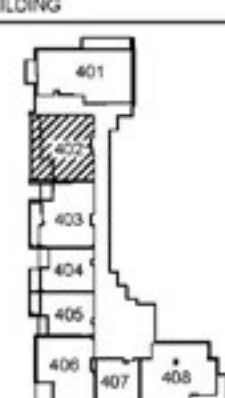


SITE PLAN
SCALE: 1:500

موقع الوحدة في المبني

UNIT LOCATION IN BUILDING

CA = Common Area



FLOOR 04
SCALE: NTS



RIGHT CAPITAL
رايت كابيتال للتطوير العقاري
REAL ESTATE DEVELOPMENT

PLOT NO:	C70	رقم القطعة
ZONE:	Al Shamsiah	المنطقة
SECTOR:	SH06	القطاع
USAGE TYPE:	COMMERCIAL	نوع الاستخدام
TOTAL AREA:	2,304.26 SQ.M (24,802.85 SQ.FT)	إجمالي المساحة
	(مساحة مخطط: 24,802.85 متر مربع / 2,304.26 متر مربع)	



KEY LOCATION

PROJECT NAME: Al Reeman - Phase 1
 PREPARED BY: DIGITAL REALTY CORP L.L.C (REF: 2024)
 SURVEY STATUS: NO
 ISSUED ON: 25/01/2025
 BLDG NAME & NO: Right Capital -1
 ADM BLDG NO: 1
 SHEET: 1 OF 1

UNIT SITE PLAN

KEY PLAN

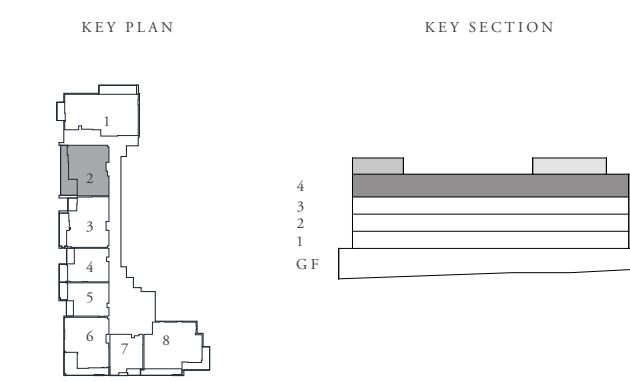


LICENSE NO.: 200400097034

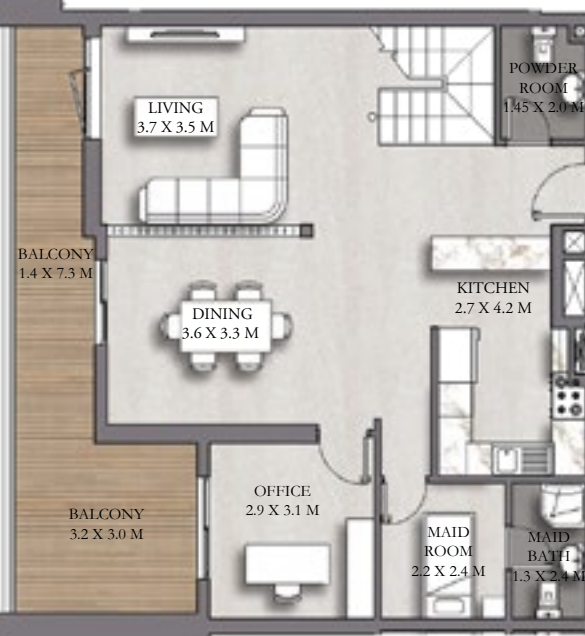
RIGHT CAPITAL 1

AL REEMAN LIVING

LEVEL 04 & 05 UNIT 402		
SUITE AREA	156.26 SQ.M	1,681.97 SQ.FT
BALCONY AREA	44.45 SQ.M	478.45 SQ.FT
TOTAL AREA	200.71 SQ.M	2,160.42 SQ.FT



FOURTH FLOOR



FIFTH FLOOR

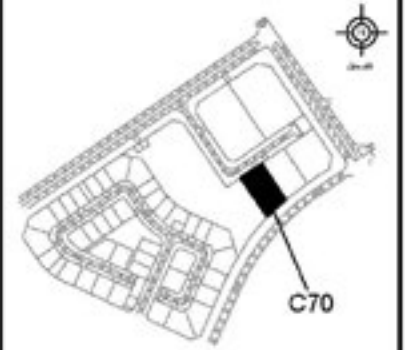


FLOOR PLAN 1. All dimensions are in imperial and metric, and measured from finish to finish excluding construction tolerances. 2. All materials, dimensions, and drawings are approximate only. 3. Information is subject to change without notice, at developer's absolute discretion. 4. Actual area may vary from the stated area. 5. Drawings not to scale. 6. All images used are for illustrative purposes only and do not represent the actual size, features, specifications, fittings, and furnishings. 7. The developer reserves the right to make revisions / alterations, at it's absolute discretion, without any liability whatsoever.

UNIT DETAIL		بيانات الوحدة	
UNIT OWNER: Right Capital Real Estate Development Construction Establishment		مؤسسة رايت كابيتال للتطوير العقاري والتشييد	
UNIT NO: 403 (FLAT)		رقم الوحدة: 403 (شقة)	
SUITE AREA (ADUAMS2) (X)	158.61 SQ.M (1707.26 SQ.FT)	مساحة الوحدة (شقة) (ADUAMS2) (X)	
BALCONY AREA (Ua)	103.94 SQ.M (1118.80 SQ.FT)	مساحة التراس (Ua)	
TOTAL UNIT AREA (ADUAT)	262.55 SQ.M (2,826.06 SQ.FT)	المساحة الكلية (ADUAT)	



PLOT NO:	C70	رقم القطعة:	C70
ZONE:	A/Sharadah	التقسيم:	A/Sharadah
SECTOR:	SH06	المساح:	SH06
USAGE TYPE:	COMMERCIAL	نوع الاستخدام:	تجاري
TOTAL AREA:	2,304.20 SQ.M (24,802.86 SQ.FT)	مساحة الكلية:	2,304.20 متر مربع (24,802.86 قدم مربع)



KEY LOCATION	
PROJECT NAME:	Al Reeman - Phase 1
PREPARED BY:	DIGITAL REALITY CORP L.L.C (REP 26341)
SURVEY STATUS:	NO
ISSUED ON:	25/01/2025
BLDG. NAME & NO.:	Right Capital-1
ADM BUILDING NO.:	1
SHEET:	1 OF 1

UNIT SITE PLAN



FOURTH FLOOR

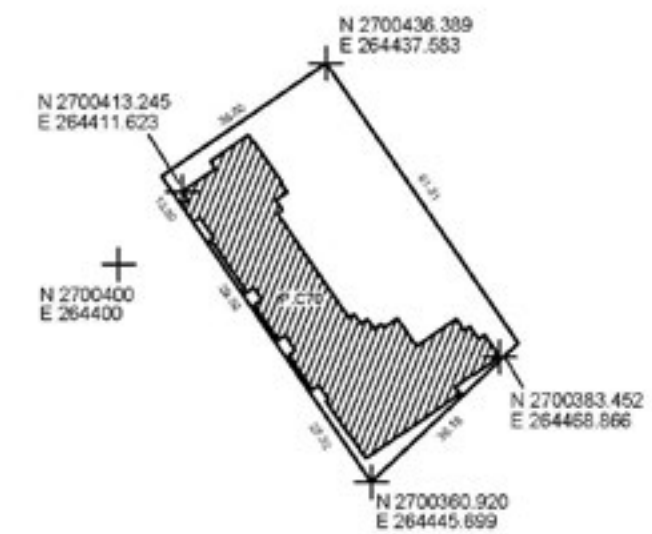
FIFTH FLOOR

Legend:

[Blue outline]	Unit Boundary
[Orange]	ADUAMS2
[Red]	Ua (Balcony / Terrace)
[Blue]	Uc (Stairs and Shafts)
[Grey]	OMA / ADM
[Grey]	ADUAT = ADUAMS2 + Ua + Uc

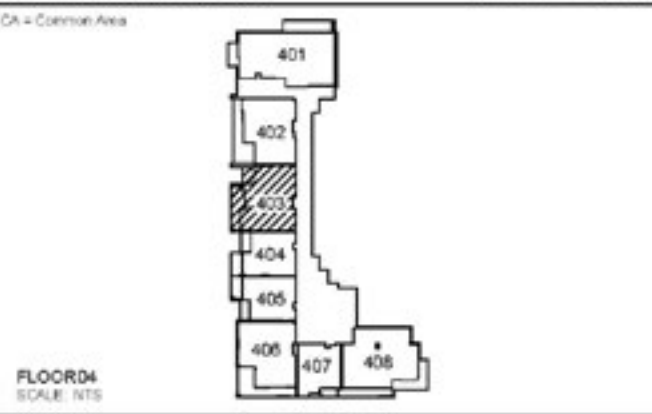
- GENERAL NOTES:
- This plan is prepared by a registered surveyor, and the Total Unit Area specified in this Unit Site Plan is calculated according to the Check Unit Area 1 (ADUAM2), as specified in the Real Estate Property Measurement Standards (RPMMS).
 - The architectural detail in this plan is based on AutoCAD design drawings, and final As-Built conditions may vary.
 - All architectural details are for illustrative purposes only.
 - ADUAT is defined as the Gross Saleable Area.

UNIT DETAIL SCALE: NTS



SITE PLAN SCALE: 1/500

UNIT LOCATION IN BUILDING

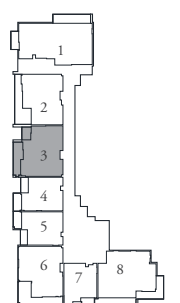


FLOOR 04 SCALE: NTS

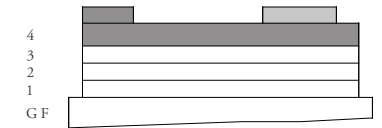
RIGHT CAPITAL 1
AL REEMAN LIVING

LEVEL 04&05 UNIT 403		
SUITE AREA	158.61 SQ.M	1,707.26 SQ.FT
BALCONY AREA	103.94 SQ.M	1,118.80 SQ.FT
TOTAL AREA	262.55 SQ.M	2,826.06 SQ.FT

KEY PLAN



KEY SECTION



FOURTH FLOOR



FIFTH FLOOR

FLOOR PLAN 1. All dimensions are in imperial and metric, and measured from finish to finish excluding construction tolerances. 2. All materials, dimensions, and drawings are approximate only. 3. Information is subject to change without notice, at developer's absolute discretion. 4. Actual area may vary from the stated area. 5. Drawings not to scale. 6. All images used are for illustrative purposes only and do not represent the actual size, features, specifications, fittings, and furnishings. 7. The developer reserves the right to make revisions / alterations, at it's absolute discretion, without any liability whatsoever.

UNIT DETAIL		بيانات الوحدة	
UNIT OWNER	Right Capital Real Estate Development Construction Establishment	مالك الوحدة	مؤسسة رأيت كابيتال للتطوير العقاري للتأسيسات
UNIT NO: 404 (FLAT)		رقم الوحدة: 404 (شقة)	
SUITE AREA (ADUAMS2-U)	54.37 SQ.M (585.23 SQ.FT)	مساحة الوحدة (ADUAMS2-U)	
BALCONY AREA (Ua)	11.54 SQ.M (124.22 SQ.FT)	مساحة البلكونة (Ua)	
TOTAL UNIT AREA (ADUAT)	65.91 SQ.M (709.45 SQ.FT)	المساحة الكلية (ADUAT)	

Legend:

- Unit Boundary
- ADUAMS2
- Ua (Balcony / Terrace)
- Uc (Wards and Shafts)

DM / ADM
ADUAT = ADUAMS2 + Ua + Uc

GENERAL NOTES:

- This plan is prepared by a registered surveyor, and the Total Unit Area specified in this Unit Site Plan is calculated according to Abu Dhabi Unit Area 1 (ADUATS), as specified in the Abu Dhabi Property Measurement Standards (ADPMS).
- The architectural detail in this plan is based on Detail Design drawings, and final As-Built conditions may vary.
- All architectural details are for illustrative purposes only.
- ADUAT is identified as the Gross Saleable Area.

UNIT DETAIL
SCALE: NTS

SITE PLAN
SCALE: 1:500

UNIT LOCATION IN BUILDING
CA = Common Area

FLOOR 04
SCALE: NTS

RIGHT CAPITAL
رأيت كابيتال للتطوير العقاري
REAL ESTATE DEVELOPMENT

PLOT NO:	C70	رقم القطعة
ZONE:	Al Shamsiah	المنطقة
SECTOR:	SH06	القطاع
USAGE TYPE:	COMMERCIAL	نوع الاستخدام
TOTAL AREA:	2,304.26 SQ.M (24,802.85 SQ.FT)	إجمالي المساحة
	(24,802.85 متر مربع / 2,304.26 متر مربع)	

KEY LOCATION

PROJECT NAME: Al Reeman - Phase 1
 PREPARED BY: DIGITAL REALTY CORP L.L.C (REF: 2024)
 SURVEY STATUS: NO
 ISSUED ON: 25/01/2025
 BLDG NAME & NO: Right Capital -1
 ADM BUILDING NO: 1
 SHEET: 1 OF 1

UNIT SITE PLAN
KEY PLAN

LICENSE NO.: 20040009704

RIGHT CAPITAL 1

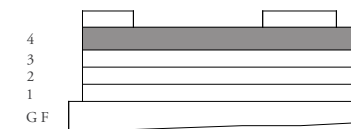
AL REEMAN LIVING

	LEVEL 04	UNIT 404
SUITE AREA	54.37 SQ.M	585.23 SQ.FT
BALCONY AREA	11.54 SQ.M	124.22 SQ.FT
TOTAL AREA	65.91 SQ.M	709.45 SQ.FT

KEY PLAN



KEY SECTION



FLOOR PLAN 1. All dimensions are in imperial and metric, and measured from finish to finish excluding construction tolerances. 2. All materials, dimensions, and drawings are approximate only. 3. Information is subject to change without notice, at developer's absolute discretion. 4. Actual area may vary from the stated area. 5. Drawings not to scale. 6. All images used are for illustrative purposes only and do not represent the actual size, features, specifications, fittings, and furnishings. 7. The developer reserves the right to make revisions / alterations, at it's absolute discretion, without any liability whatsoever.

UNIT DETAIL		بيانات الوحدة	
UNIT OWNER: Right Capital Real Estate Development Construction Establishment		ملاك الوحدة: مؤسسة رائد كابيتال للتطوير العقاري للتأسيسات	
UNIT NO: 405 (FLAT)		رقم الوحدة: 405 (شقة)	
SUITE AREA (ADUAMS2-U): 54.88 SQ.M (590.72 SQ.FT)		مساحة الوحدة (ADUAMS2-U): 54.88 متر مربع (590.72 متر مربع)	
BALCONY AREA (Ua): 10.70 SQ.M (115.18 SQ.FT)		مساحة التراس (Ua): 10.70 متر مربع (115.18 متر مربع)	
TOTAL UNIT AREA (ADUAI): 65.58 SQ.M (705.90 SQ.FT)		المساحة الكلية (ADUAI): 65.58 متر مربع (705.90 متر مربع)	

Legend:

- Unit Boundary
- ADUAMS2
- Ua (Balcony / Terrace)
- Uc (Wards and Shafts)

GENERAL NOTES:

- This plan is prepared by a registered surveyor, and the Total Unit Area specified in this Unit Site Plan is calculated according to Abu Dhabi Unit Area 1 (ADUAI), as specified in the Abu Dhabi Property Measurement Standards (ADPMS).
- The architectural detail in this plan is based on Detail Design drawings, and final As-Built conditions may vary.
- All architectural details are for illustrative purposes only.
- ADUAI is identified as the Gross Saleable Area.

UNIT DETAIL SCALE: NTS

SITE PLAN SCALE: 1:500

UNIT LOCATION IN BUILDING موقع الوحدة في المبنى

FLOOR 04 SCALE: NTS

RIGHT CAPITAL
رئيس كابيتال للتطوير العقاري
REAL ESTATE DEVELOPMENT

PLOT NO:	C70	رقم القطعة:	C70
ZONE:	Al Shamsiyah	المنطقة:	Al Shamsiyah
SECTOR:	SH06	القطاع:	SH06
USAGE TYPE:	COMMERCIAL	نوع الاستخدام:	تجاري
TOTAL AREA:	2,304.26 SQ.M (24,802.85 SQ.FT)	إجمالي المساحة:	2,304.26 متر مربع (24,802.85 متر مربع)

KEY LOCATION

PROJECT NAME: Al Reeman - Phase 1
 PREPARED BY: DIGITAL REALTY CORP L.L.C (REF: 2024)
 SURVEY STATUS: NO
 ISSUED ON: 25/01/2025
 BLDG NAME & NO: Right Capital -1
 ADM BUILDING NO: 1
 SHEET: 1 OF 1

UNIT SITE PLAN

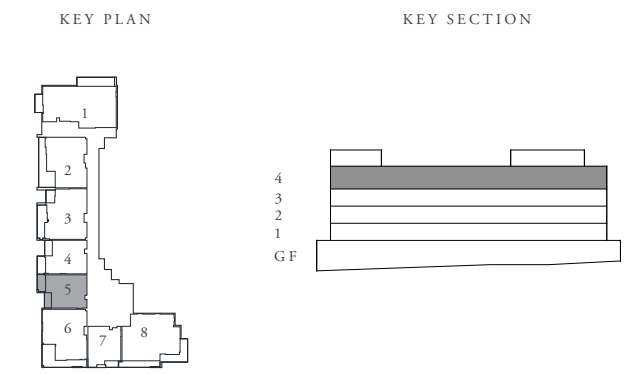
KEY PLAN

LICENSE NO.: 200400097034

RIGHT CAPITAL 1

AL REEMAN LIVING

	LEVEL 04	UNIT 405
SUITE AREA	54.88 SQ.M	590.72 SQ.FT
BALCONY AREA	10.70 SQ.M	115.18 SQ.FT
TOTAL AREA	65.58 SQ.M	705.90 SQ.FT



FLOOR PLAN 1. All dimensions are in imperial and metric, and measured from finish to finish excluding construction tolerances. 2. All materials, dimensions, and drawings are approximate only. 3. Information is subject to change without notice, at developer's absolute discretion. 4. Actual area may vary from the stated area. 5. Drawings not to scale. 6. All images used are for illustrative purposes only and do not represent the actual size, features, specifications, fittings, and furnishings. 7. The developer reserves the right to make revisions / alterations, at it's absolute discretion, without any liability whatsoever.

UNIT DETAIL		بيانات الوحدة	
UNIT OWNER	Right Capital Real Estate Development Construction/Establishment	مالك الوحدة	مؤسسة رائت كابيتال للتطوير العقاري للتأسيسات
UNIT NO:	406 (FLAT)	رقم الوحدة:	406 (شقة)
SUITE AREA (ADUAMS2-U)	168.38 SQ.M (1,812.32 SQ.FT)	مساحة الوحدة (ADUAMS2-U)	
BALCONY AREA (Ba)	115.10 SQ.M (1,238.93 SQ.FT)	مساحة البلكونة (Ba)	
TOTAL UNIT AREA (ADUAT)	283.48 SQ.M (3,051.35 SQ.FT)	المساحة الكلية (ADUAT)	

FOURTH FLOOR **FIFTH FLOOR**

Legend:
 Unit Boundary
 ADUAMS2
 Ba (Balcony/Terrace)
 Ua (Funds and Shafts)
 DM / ADM
 ADUAT = ADUAMS2 + Ba + Ua

GENERAL NOTES:
 1. This plan is prepared by a registered surveyor, and the Total Unit Area specified in this Unit Site Plan is calculated according to Abu Dhabi Unit Area 1 (ADUATs), as specified in the Abu Dhabi Property Measurement Standards (ADPMS).
 2. The architectural detail in this plan is based on Detail Design drawings, and final As-Built conditions may vary.
 3. All architectural details are for illustrative purposes only.
 4. ADUAT is identified as the Gross Saleable Area.

UNIT DETAIL SCALE: NTS

SITE PLAN
SCALE: 1:500

UNIT LOCATION IN BUILDING
 CA = Common Area

FLOOR 04
SCALE: NTS

PROJECT NO:	C70	رقم القطة:	
ZONE:	Al Shamsiah	المنطقة:	
SECTOR:	SH06	القطاع:	
USAGE TYPE:	COMMERCIAL	نوع الاستخدام:	
TOTAL AREA:	2,304.26 SQ.M (24,802.85 SQ.FT)	إجمالي المساحة:	24,802.85 متر مربع / 2,304.26

KEY LOCATION

PROJECT NAME: Al Reeman - Phase 1
 PREPARED BY: DIGITAL REALTY CORP L.L.C (REF: 2024)
 SURVEY STATUS: NO
 ISSUED ON: 25/01/2025
 BLDG NAME & NO: Right Capital -1
 ADM BUILDING NO: 1
 SHEET: 1 OF 1

UNIT SITE PLAN
KEY PLAN

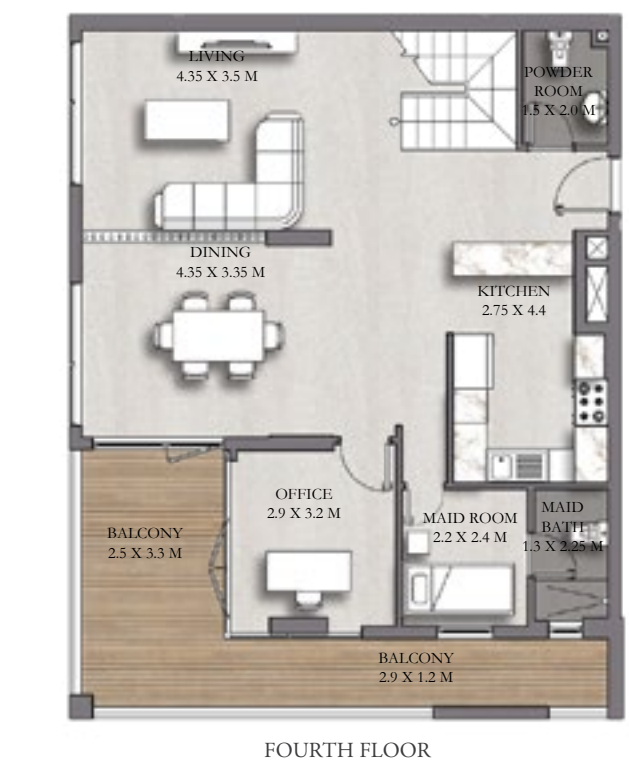
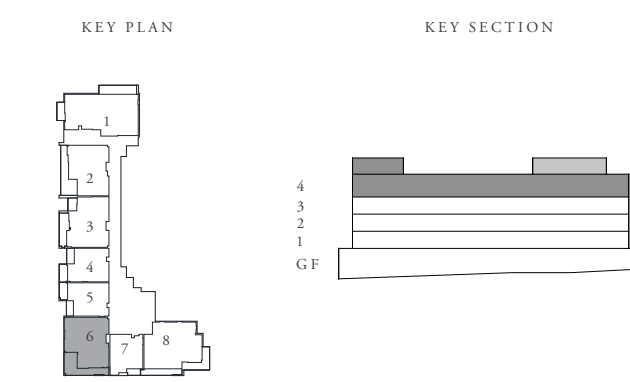
LICENSE NO.: 200400097934

RIGHT CAPITAL 1

AL REEMAN LIVING

LEVEL 04&05 UNIT 406

SUITE AREA	168.38 SQ.M	1,812.32 SQ.FT
BALCONY AREA	115.10 SQ.M	1,238.93 SQ.FT
TOTAL AREA	283.48 SQ.M	3,051.35 SQ.FT



FLOOR PLAN 1. All dimensions are in imperial and metric, and measured from finish to finish excluding construction tolerances. 2. All materials, dimensions, and drawings are approximate only. 3. Information is subject to change without notice, at developer's absolute discretion. 4. Actual area may vary from the stated area. 5. Drawings not to scale. 6. All images used are for illustrative purposes only and do not represent the actual size, features, specifications, fittings, and furnishings. 7. The developer reserves the right to make revisions / alterations, at it's absolute discretion, without any liability whatsoever.

UNIT DETAIL		بيانات الوحدة	
UNIT OWNER: Right Capital Real Estate Development Construction Establishment		ملاك الوحدة: مؤسسة رائد كابيتال للتطوير العقاري للتأسيسات	
UNIT NO: 407 (FLAT)		رقم الوحدة: 407 (شقة)	
SUITE AREA (ADUAMS2-U):	51.63 SQ.M (555.74 SQ.FT)	مساحة الوحدة (ADUAMS2-U):	
BALCONY AREA (Ua):	3.74 SQ.M (40.26 SQ.FT)	مساحة البلكونة (Ua):	
TOTAL UNIT AREA (ADUAI):	55.37 SQ.M (596.00 SQ.FT)	المساحة الكلية (ADUAI):	

407

Legend:

- Unit Boundary
- ADUAMS2
- Ua (Balcony / Terrace)
- Uc (Wards and Shafts)

DM / ADM
ADUAI = ADUAMS2 + Ua + Uc

GENERAL NOTES:

- This plan is prepared by a registered surveyor, and the Total Unit Area specified in this Unit Site Plan is calculated according to Abu Dhabi Unit Area 1 (ADUAI), as specified in the Abu Dhabi Property Measurement Standards (ADPMS).
- The architectural detail in this plan is based on Detail Design drawings, and final As-Built conditions may vary.
- All architectural details are for illustrative purposes only.
- ADUAI is identified as the Gross Saleable Area.

UNIT DETAIL
SCALE: NTS

SITE PLAN
SCALE: 1:500

UNIT LOCATION IN BUILDING
CA = Common Area

FLOOR 04
SCALE: NTS

بيانات الموقع في المبنى

RIGHT CAPITAL
رايد كابيتال للتطوير العقاري
REAL ESTATE DEVELOPMENT

PROJECT NO: C70
ZONE: Al Sharkhah
SECTOR: SH06
USAGE TYPE: COMMERCIAL
TOTAL AREA: 2,304.26 SQ.M (24,802.85 SQ.FT)
مساحة المشروع: 2,304.26 متر مربع (24,802.85 متر مربع)

KEY LOCATION

PROJECT NAME: Al Reeman - Phase 1
PREPARED BY: DIGITAL REALITY CORP L.L.C (REF: 2024)
SURVEY STATUS: NO
ISSUED ON: 25/01/2025
BLDG NAME & NO: Right Capital -1
ADM BUILDING NO: 1
SHEET: 1 OF 1

UNIT SITE PLAN
KEY PLAN

LICENSE NO.: 200400097934

RIGHT CAPITAL 1

AL REEMAN LIVING

	LEVEL 04	UNIT 407
SUITE AREA	51.63 SQ.M	555.74 SQ.FT
BALCONY AREA	3.74 SQ.M	40.26 SQ.FT
TOTAL AREA	55.37 SQ.M	596.00 SQ.FT

KEY PLAN



KEY SECTION



KITCHEN 3.5 X 4.55 M

LIVING 3.5 X 3.35 M

BEDROOM 3.15 X 4.3 M

BATHROOM 1.75 X 1.8 M

POWDER ROOM 1.4 X 2.1 M

BALCONY 2.6 X 1.00 M

FLOOR PLAN 1. All dimensions are in imperial and metric, and measured from finish to finish excluding construction tolerances. 2. All materials, dimensions, and drawings are approximate only. 3. Information is subject to change without notice, at developer's absolute discretion. 4. Actual area may vary from the stated area. 5. Drawings not to scale. 6. All images used are for illustrative purposes only and do not represent the actual size, features, specifications, fittings, and furnishings. 7. The developer reserves the right to make revisions / alterations, at it's absolute discretion, without any liability whatsoever.

UNIT DETAIL		بيانات الوحدة	
UNIT OWNER	Right Capital Real Estate Development Construction Establishment	مالك الوحدة	مؤسسة رائد كابيتال للتطوير العقاري للتأسيسات
UNIT NO:	408 (FLAT)	رقم الوحدة:	408 (شقة)
SUITE AREA (ADUAMS2-U)	102.85 SQ.M (1,107.87 SQ.FT)	مساحة الوحدة (ADUAMS2-U)	
BALCONY AREA (Ba)	25.31 SQ.M (272.43 SQ.FT)	مساحة البلكونة (Ba)	
TOTAL UNIT AREA (ADUAT)	128.16 SQ.M (1,379.50 SQ.FT)	المساحة الكلية (ADUAT)	

Legend:

- Unit Boundary
- ADUAMS2
- Ba (Balcony / Terrace)
- Uc (Walls and Shafts)

GENERAL NOTES:

- This plan is prepared by a registered surveyor, and the Total Unit Area specified in this Unit Site Plan is calculated according to Abu Dhabi Unit Area 1 (ADUATS), as specified in the Abu Dhabi Property Measurement Standards (ADPMS).
- The architectural detail in this plan is based on Detail Design drawings, and final As-Built conditions may vary.
- All architectural details are for illustrative purposes only.
- ADUAT is identified as the Gross Saleable Area.

UNIT DETAIL SCALE: NTS

SITE PLAN SCALE: 1:500

UNIT LOCATION IN BUILDING
 CA = Common Area

FLOOR 04 SCALE: NTS

RIGHT CAPITAL
 رويد كابيتال للتطوير العقاري
 REAL ESTATE DEVELOPMENT

PROJECT NO:	C70	رقم القطعة:	
ZONE:	Al Shamsiyah	المنطقة:	
SECTOR:	SH06	القطاع:	
USAGE TYPE:	COMMERCIAL	نوع الاستخدام:	
TOTAL AREA:	2,304.26 SQ.M (24,802.85 SQ.FT)	إجمالي المساحة:	
	(مساحة مخطط: 24,802.85 متر مربع / مساحه مخطط: 2,304.26)		

KEY LOCATION

PROJECT NAME: Al Reeman - Phase 1
 PREPARED BY: DIGITAL REALITY CORP L.L.C (REF: 2024)
 SURVEY STATUS: NO
 ISSUED ON: 25/01/2025
 BLDG NAME & NO: Right Capital -1
 ADM BUILDING NO: 1
 SHEET: 1 OF 1

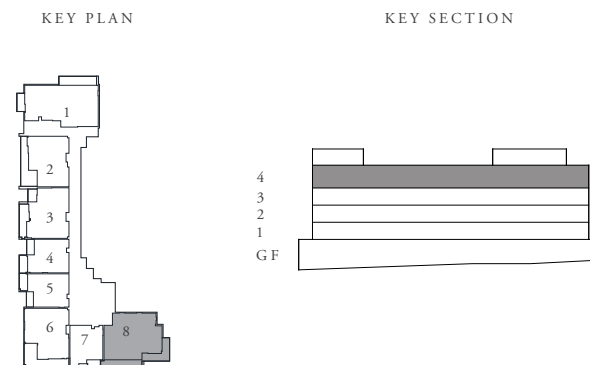
UNIT SITE PLAN
 KEY PLAN

UNIT SITE PLAN SCALE: NTS

RIGHT CAPITAL 1

AL REEMAN LIVING

	LEVEL 04	UNIT 408
SUITE AREA	102.85 SQ.M	1,107.07 SQ.FT
BALCONY AREA	25.31 SQ.M	272.43 SQ.FT
TOTAL AREA	128.16 SQ.M	1,379.50 SQ.FT



FLOOR PLAN 1. All dimensions are in imperial and metric, and measured from finish to finish excluding construction tolerances. 2. All materials, dimensions, and drawings are approximate only. 3. Information is subject to change without notice, at developer's absolute discretion. 4. Actual area may vary from the stated area. 5. Drawings not to scale. 6. All images used are for illustrative purposes only and do not represent the actual size, features, specifications, fittings, and furnishings. 7. The developer reserves the right to make revisions / alterations, at it's absolute discretion, without any liability whatsoever.

