

# SEA *La* VIE

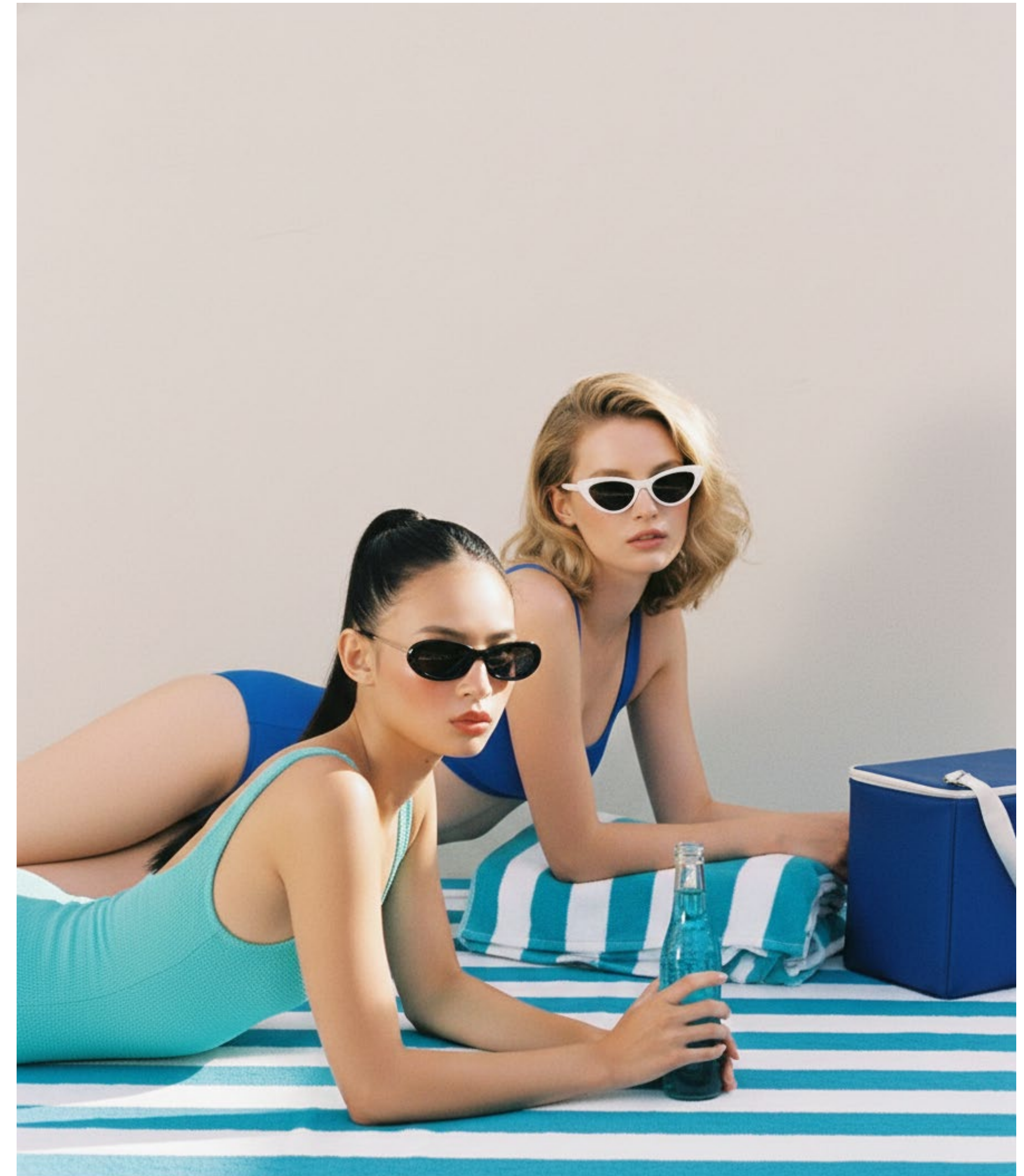
SEA • MARINA • ENTERTAINMENT



DAR  
GLOBAL

# YOUR SEASIDE VACATION HOME

With your own private key to Qatar's  
ultimate entertainment district.  
Step out entertained.



# A DECADE OF NON-STOP PLAY

BEACH CLUBS. WATERPARK. MARINA. PROMENADE.





**PLEASURE.  
RETURNS.  
OR BOTH.**

**REAL ESTATE THAT DOESN'T  
MAKE YOU CHOOSE**



# COME FOR THE SEA STAY FOR THE SKY-HIGH SLIDE



Set on the marina with proximity to Azure Beach Club and Meryal's iconic, record-breaking ride. It's the weekend retreat you'll love.



# WELCOME TO DOHA, QATAR

From its waterfront skyline to its cultural districts, Doha mixes calm living with big-city energy. Easy to get around, easy to enjoy, and always a step ahead of itself.

# 8 REASONS TO INVEST

- 01** PERMANENT RESIDENCY  
With an investment of 1M USD access to world class healthcare, education, and the ability to live, work and study.
- 02** BUSINESS OWNERSHIP  
100% Foreign business ownership.
- 03** INVESTOR RESIDENCY PROGRAM  
With a minimum investment of 200,000 USD, investors will qualify for an immediate title deed (Sanad Mabdayi) and residency linked to their investment.
- 04** TAX INCENTIVES  
With 0% property tax and so much more.
- 05** 1ST IN EDUCATION  
Ranking #1 in Education in the Arab Region.
- 06** HEALTHCARE  
Quality Healthcare for all and one of the safest countries in the world.
- 07** WORLD'S BEST AIRPORT  
Welcoming around 53 million passengers to the world's top, Hamad International Airport.
- 08** GLOBAL SPORTS HOST  
Hosting the FIFA U-17 World Cup 2025, FIFA Arab Cup 2025, and more major events.





# THINK BIG. THINK LUSAIL CITY

Four man-made islands. Twenty-two international hotels.  
One new luxury coastline.

A city where living, leisure and culture all feel naturally  
connected. Intelligent planning and world-class  
infrastructure put it on everyone's shortlist.  
Residents, visitors and investors included.



# THE EPICENTRE OF EPIC EXPERIENCES

## QETAIFAN ISLAND **N**ORTH



MAN-MADE ISLAND  
SPANNING 1.3M SQM



SOUQS & RETAIL  
PLAZAS



1.3 KM CANAL RUNNING  
THROUGH THE ISLAND



DIVERSE DINING  
OPTIONS



MERYAL WATERPARK WITH 36  
RIDES AND THE HIGHEST SLIDE  
IN THE WORLD (85 M)



UPSCALE  
RESIDENTIAL  
COMMUNITIES



AZURE BEACH CLUB



SHOPPING DISTRICTS



CAFES & RESTAURANTS



LUXURY HOTEL

# YOUR MAP TO THE ENTERTAINMENT CAPITAL

- 7 MN** LUSAIL
- 12 MN** THE PEARL QATAR
- 10 MN** KATARA CULTURAL VILLAGE
- 15 MN** WEST BAY
- 18 MN** DOHA CORNICHE
- 25 MN** HAMAD INTERNATIONAL AIRPORT





AZURE BEACH

MERYAL WATERPARK

QETAIFAN ISLAND NORTH ENTERTAINMENT DISTRICT

RIXOS PREMIUM QETAIFAN ISLAND NORTH

SEA *La* VIE

LUSAIL BOULEVARD

PLACE VENDÔME MALL

LUSAIL MARINA PROMENADE

# KEY DESTINATION WITHIN MINUTES

- 1 MN** RIXOS PREMIUM QETAIFAN ISLAND NORTH
- 1 MN** QETAIFAN ISLAND NORTH ENTERTAINMENT DISTRICT
- 1 MN** MERYAL WATERPARK
- 1 MN** AZURE BEACH
- 2 MN** LUSAIL BOULEVARD
- 5 MN** PLACE VENDÔME
- 7 MN** LUSAIL MARINA PROMENADE

# YOUR FRONT DOOR OPENS STRAIGHT INTO ENTERTAINMENT

WATERPARK, BEACH CLUBS & HOTEL  
ALL MINUTES AWAY FROM YOUR HOME

\*T&CS APPLY



SEA *La* VIE

MERYAL WATERPARK

AZURE BEACHCLUB

RIXOS HOTEL

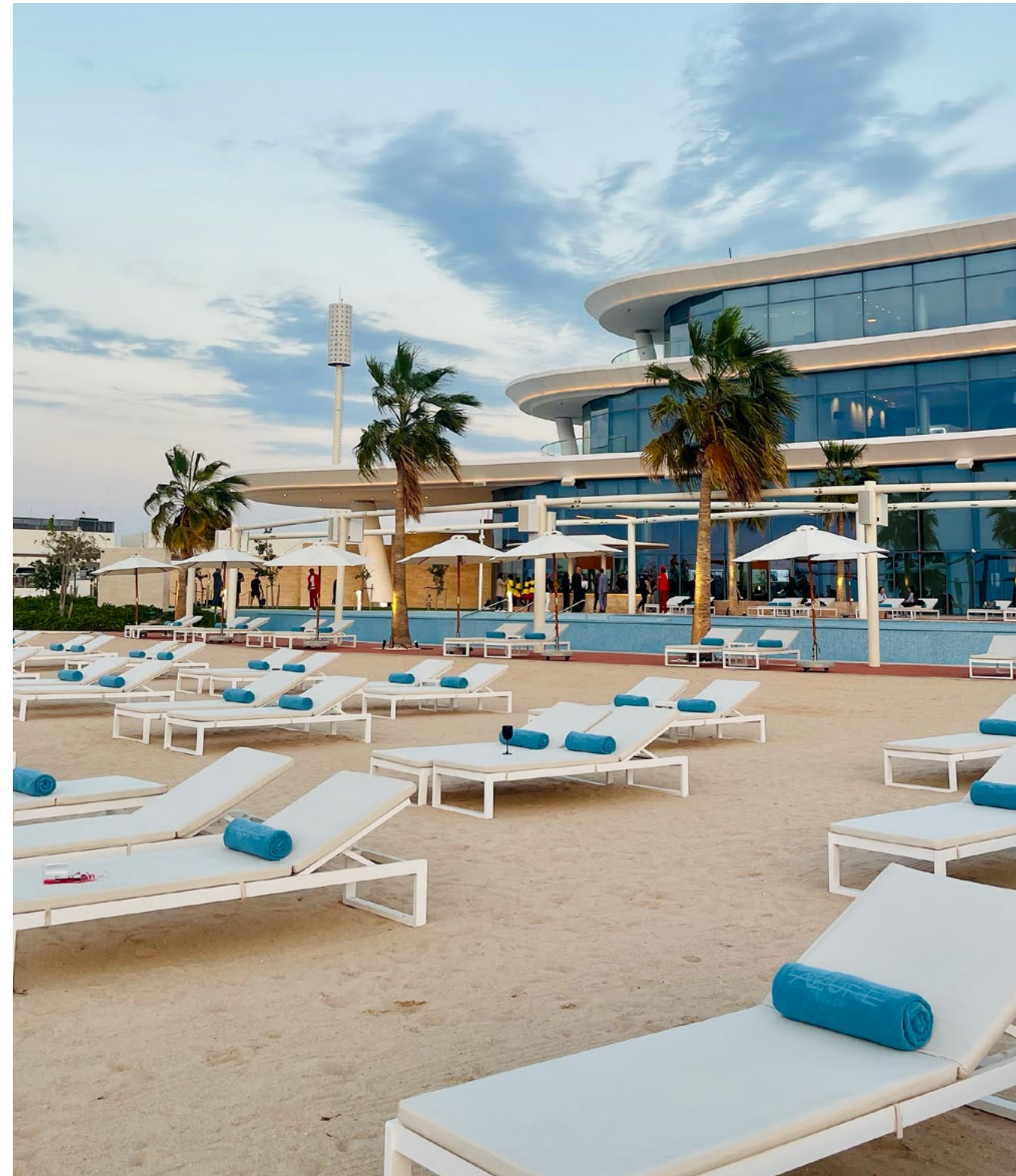
# MERYAL WATERPARK

## HOME TO THE WORLD'S HIGHEST SLIDE





AZURE  
AZURE  
BEACH - DOHA



RIXOS  
PREMIUM QETAIFAN  
ISLAND NORTH



# SEA *La* VIE

SEA • MARINA • ENTERTAINMENT

# THE WINDOW IS YOUR FAVOURITE SHOW













# TAILORED AMENITIES

At Sea La Vie, everything's in place so you can just settle in and start living. Thoughtful amenities designed to make life smoother, lighter and a lot more fun.



FITNESS CENTRE



LUXURY RETAIL



LANDSCAPED  
COURTYARD WITH  
SEA VIEWS



INFINITY  
SWIMMING POOL



4 PASSENGER ELEVATORS,  
INCLUDING A SERVICE  
ELEVATOR



24 HRS  
RECEPTION DESK



PUBLIC AREAS FURNISHED  
AND DESIGNED



PARKING



# SEA *La* VIE

## **FLOORPLANS**

**1-BEDROOM + DEN**

FLOORS

**TYPE A**

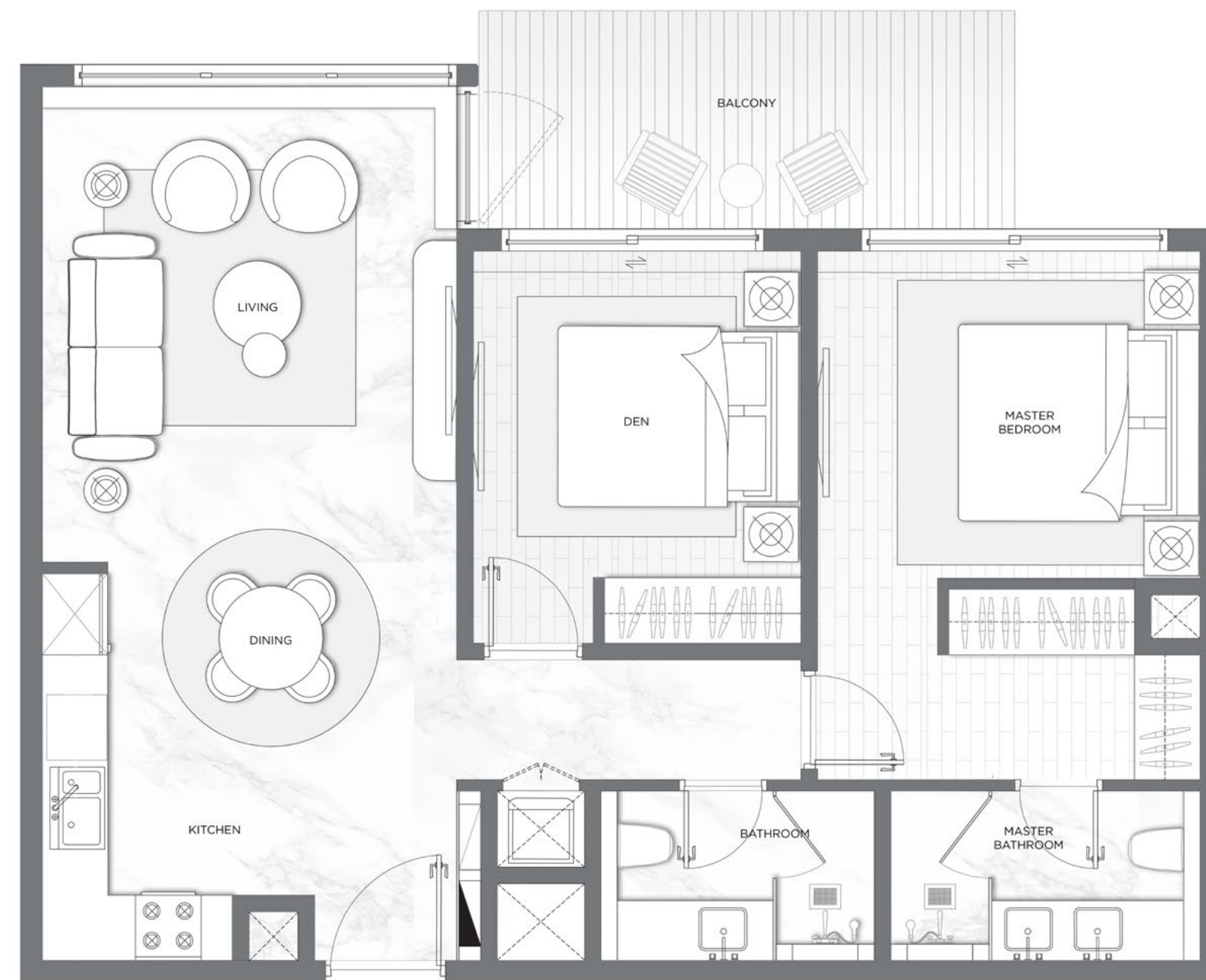
1, 2, 3, 4, 5

**RESIDENCE** 79 - 81 sqm  
850 - 872 sqft

**BALCONY / TERRACE** 8 - 131 sqm  
86 - 1,410 sqft

**TOTAL** 89 - 211 sqm  
958 - 2,271 sqft

MASTERPLAN



KEYPLAN



FLOOR 1



FLOOR 2



FLOOR 3



FLOOR 4



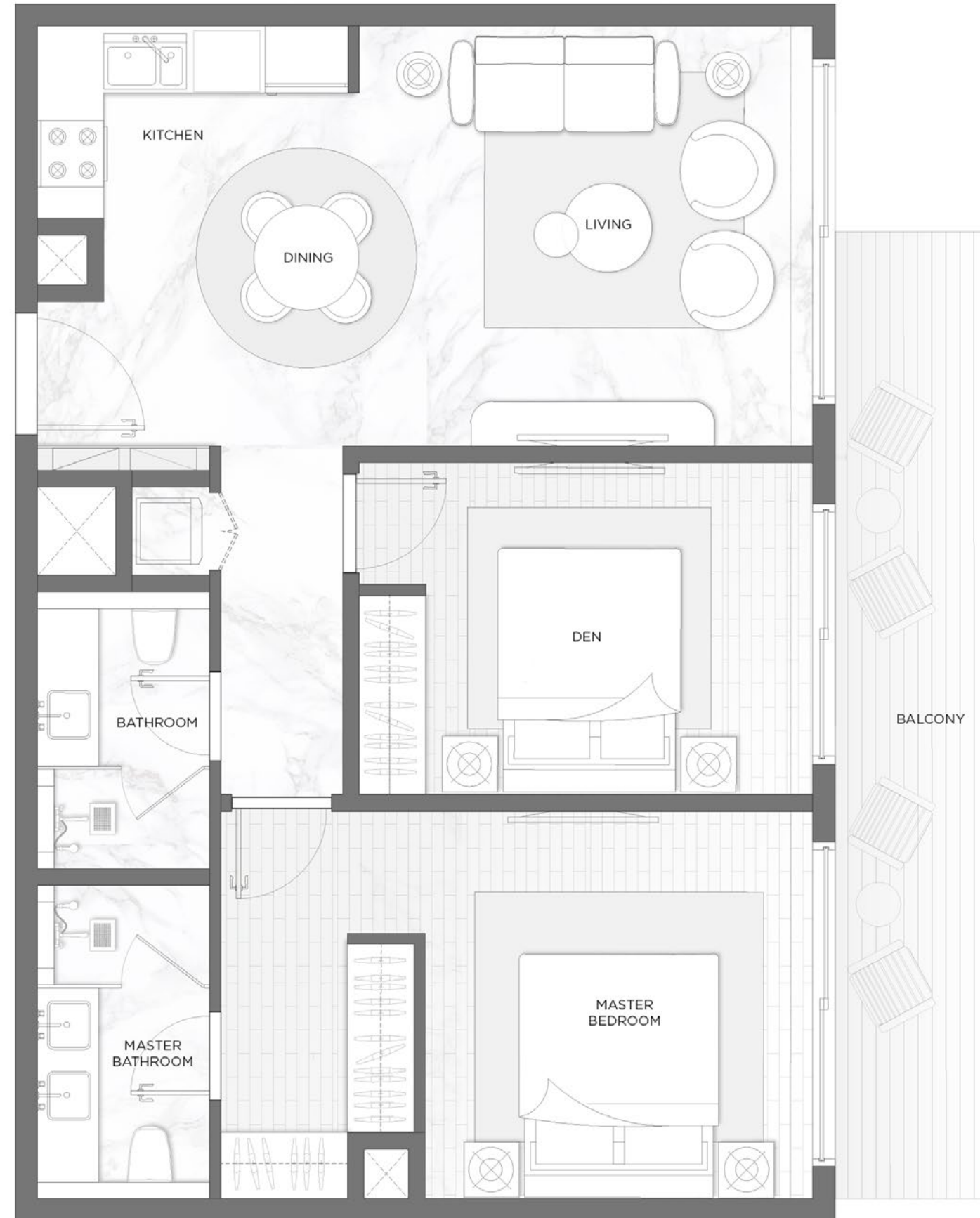
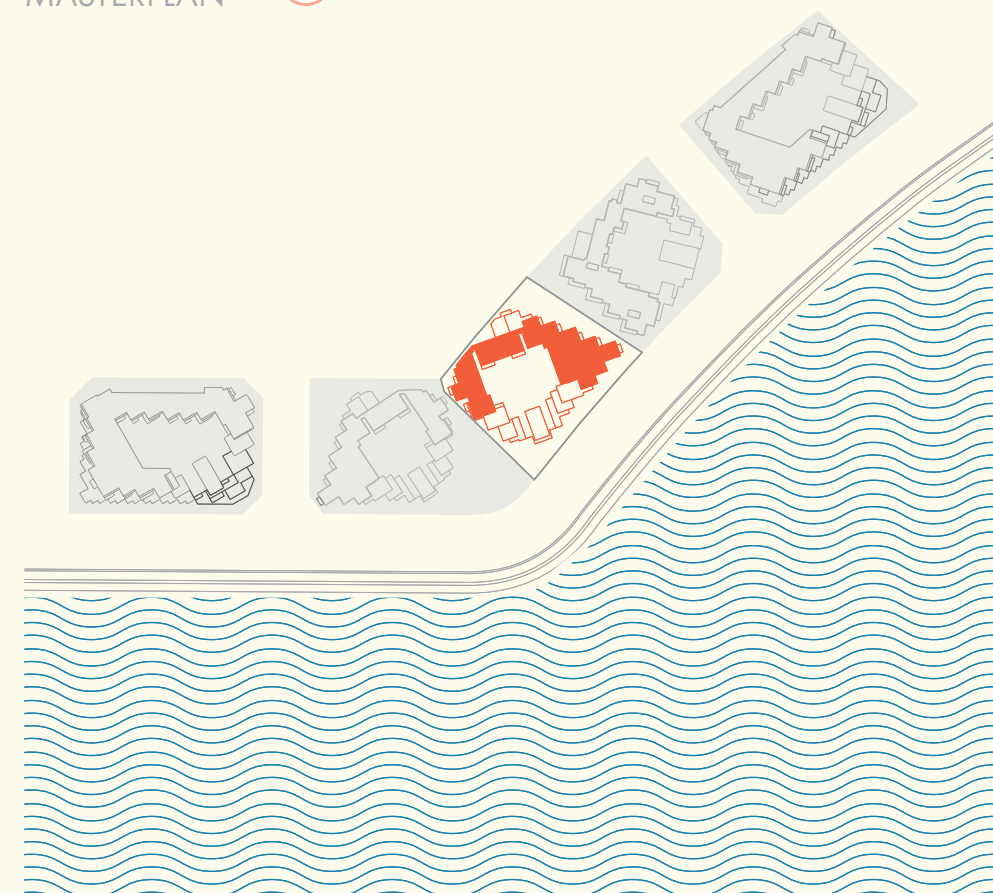
FLOOR 5



Disclaimer: All pictures, plans, layouts, information, data and details included in this brochure are indicative only and may change at any time up to the final 'as built' status in accordance with final designs of the project, regulatory approvals and planning permissions. All accessories and interior finishes such as wallpaper, chandeliers, furniture, electronics, white goods, curtains, hard and soft landscaping, pavements, features, gym, swimming pool(s) and other elements displayed in the brochure, or within the show apartment or between the plot boundary and the unit, are not part of the unit and are shown for illustrative purposes only.

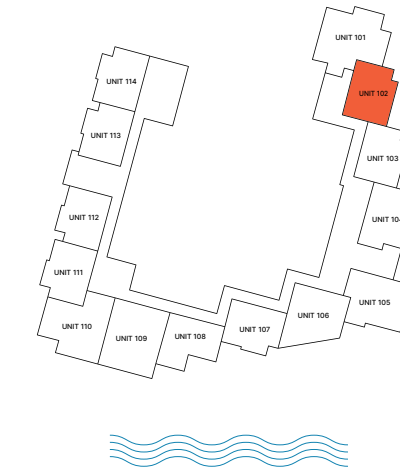
<b>1-BEDROOM + DEN</b>	<b>FLOORS</b>
<b>TYPE A1</b>	<b>1, 2, 3, 4, 5</b>
<b>RESIDENCE</b>	79 - 81 sqm 850 - 872 sqft
<b>BALCONY / TERRACE</b>	12 - 133 sqm 129 - 1,431 sqft
<b>TOTAL</b>	92 - 214 sqm 990 - 2,303 sqft

MASTERPLAN

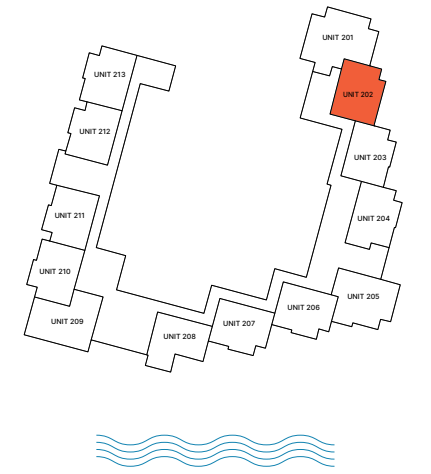


KEYPLAN

FLOOR 1



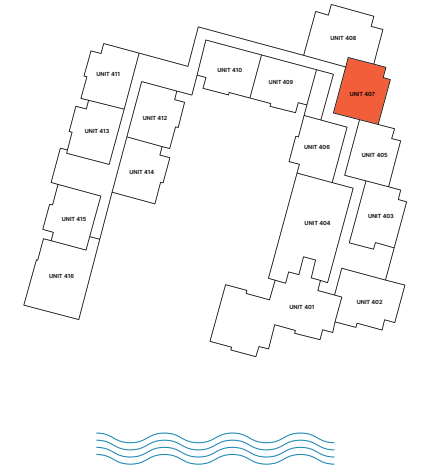
FLOOR 2



FLOOR 3



FLOOR 4



FLOOR 5



Disclaimer: All pictures, plans, layouts, information, data and details included in this brochure are indicative only and may change at any time up to the final 'as built' status in accordance with final designs of the project, regulatory approvals and planning permissions. All accessories and interior finishes such as wallpaper, chandeliers, furniture, electronics, white goods, curtains, hard and soft landscaping, pavements, features, gym, swimming pool(s) and other elements displayed in the brochure, or within the show apartment or between the plot boundary and the unit, are not part of the unit and are shown for illustrative purposes only.

**1-BEDROOM + DEN**

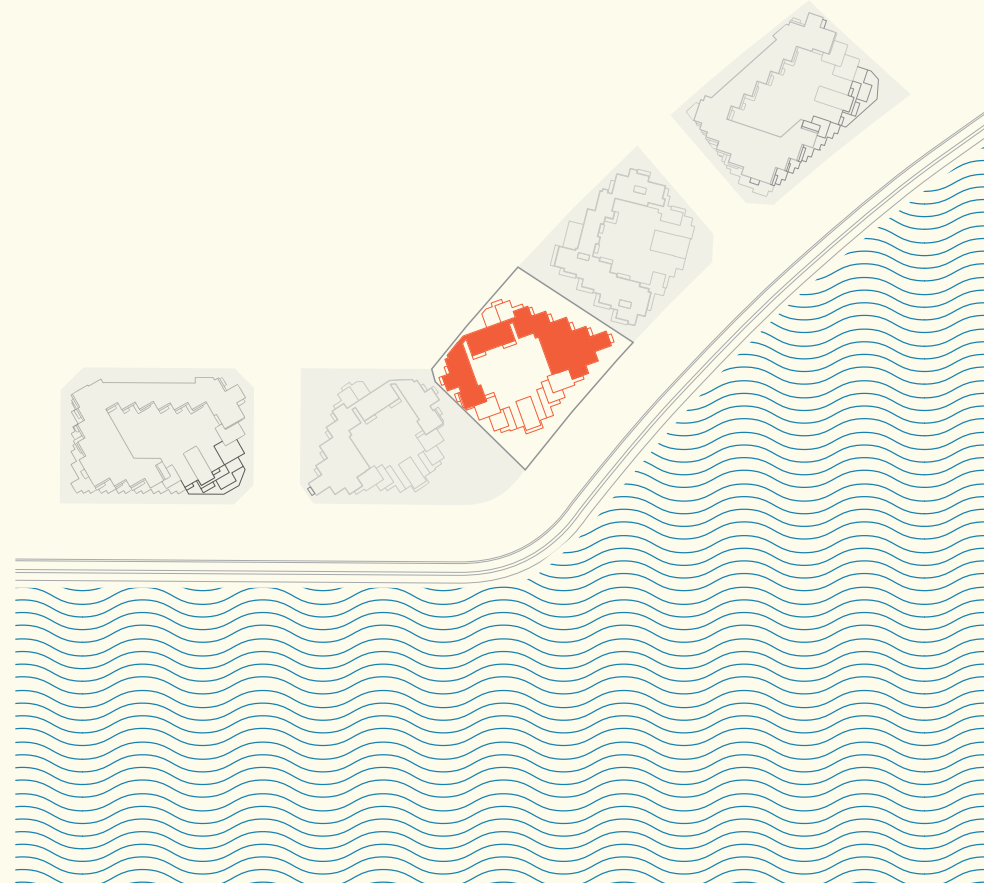
FLOORS

**TYPE A2**

**1, 2, 3, 4**

RESIDENCE	97 sqm 1,044 sqft
BALCONY / TERRACE	9 - 14 sqm 97 - 151 sqft
TOTAL	106 - 111 sqm 1,140 - 1,195 sqft

MASTERPLAN



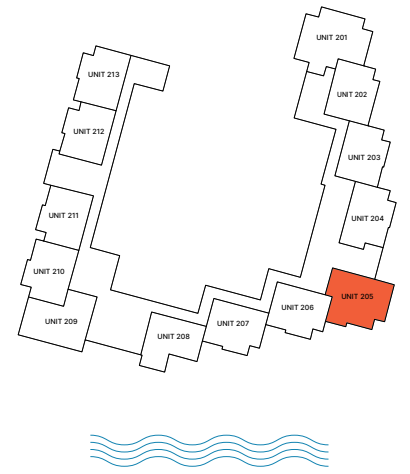
KEYPLAN



FLOOR 1



FLOOR 2



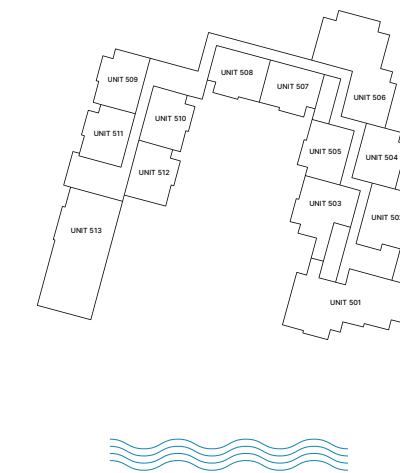
FLOOR 3



FLOOR 4



FLOOR 5



Disclaimer: All pictures, plans, layouts, information, data and details included in this brochure are indicative only and may change at any time up to the final 'as built' status in accordance with final designs of the project, regulatory approvals and planning permissions. All accessories and interior finishes such as wallpaper, chandeliers, furniture, electronics, white goods, curtains, hard and soft landscaping, pavements, features, gym, swimming pool(s) and other elements displayed in the brochure, or within the show apartment or between the plot boundary and the unit, are not part of the unit and are shown for illustrative purposes only.

**1-BEDROOM + DEN**

FLOOR

**TYPE A3**

**5**

RESIDENCE	101 sqm 1,087 sqft
BALCONY / TERRACE	121 sqm 1,302 sqft
TOTAL	222 sqm 2,389 sqft

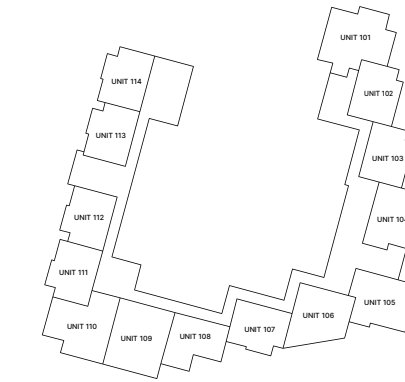
MASTERPLAN



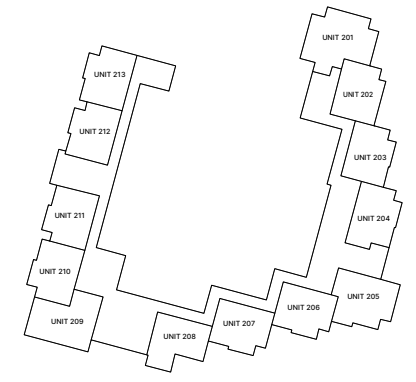
KEYPLAN



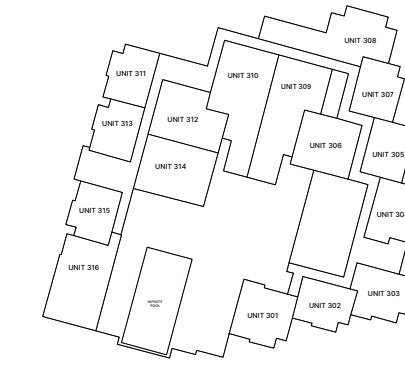
FLOOR 1



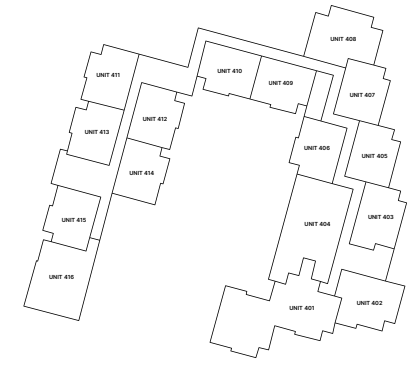
FLOOR 2



FLOOR 3



FLOOR 4



FLOOR 5



Disclaimer: All pictures, plans, layouts, information, data and details included in this brochure are indicative only and may change at any time up to the final 'as built' status in accordance with final designs of the project, regulatory approvals and planning permissions. All accessories and interior finishes such as wallpaper, chandeliers, furniture, electronics, white goods, curtains, hard and soft landscaping, pavements, features, gym, swimming pool(s) and other elements displayed in the brochure, or within the show apartment or between the plot boundary and the unit, are not part of the unit and are shown for illustrative purposes only.

**1-BEDROOM + DEN**

FLOOR

**TYPE A4**

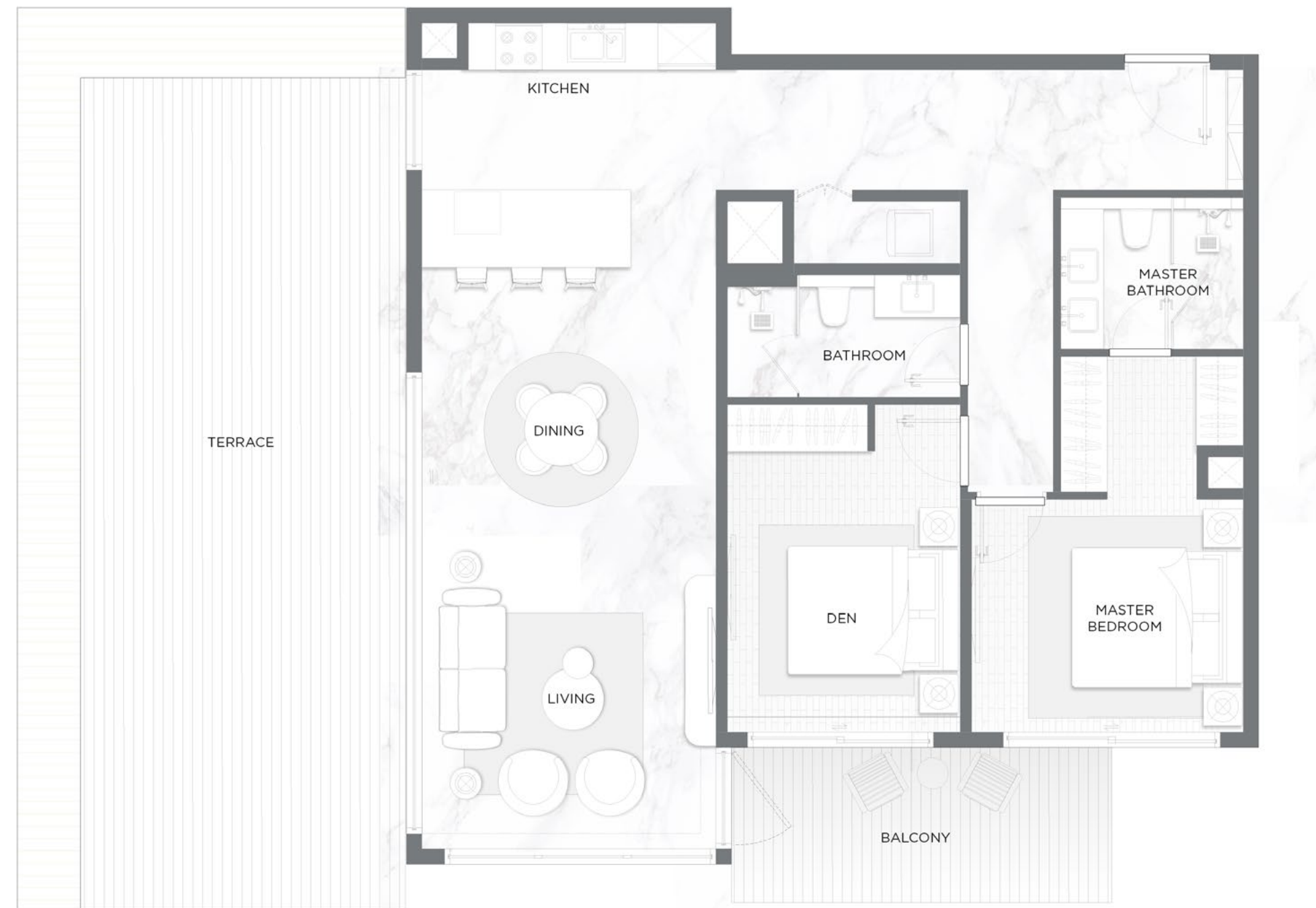
**3**

RESIDENCE 106 sqm  
1,173 sqft

BALCONY / TERRACE 92 sqm  
990 sqft

TOTAL 198 sqm  
2,131 sqft

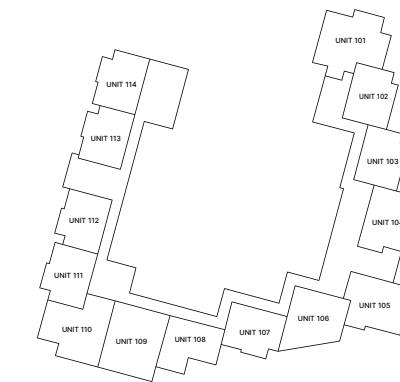
MASTERPLAN



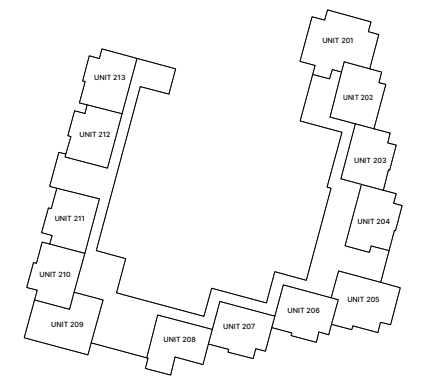
KEYPLAN



FLOOR 1



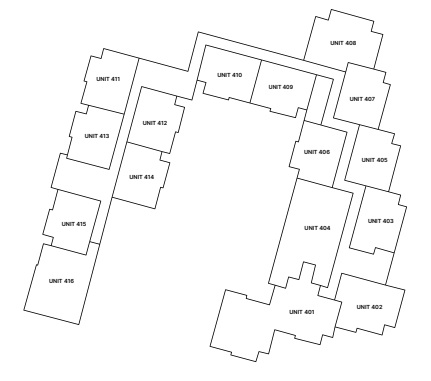
FLOOR 2



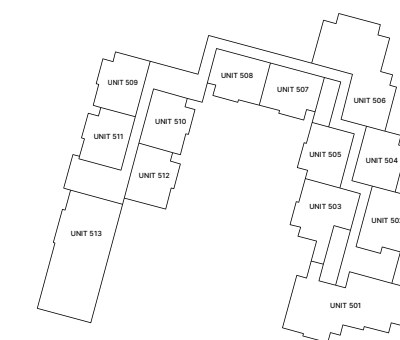
FLOOR 3



FLOOR 4



FLOOR 5



Disclaimer: All pictures, plans, layouts, information, data and details included in this brochure are indicative only and may change at any time up to the final 'as built' status in accordance with final designs of the project, regulatory approvals and planning permissions. All accessories and interior finishes such as wallpaper, chandeliers, furniture, electronics, white goods, curtains, hard and soft landscaping, pavements, features, gym, swimming pool(s) and other elements displayed in the brochure, or within the show apartment or between the plot boundary and the unit, are not part of the unit and are shown for illustrative purposes only.

**1-BEDROOM + DEN**

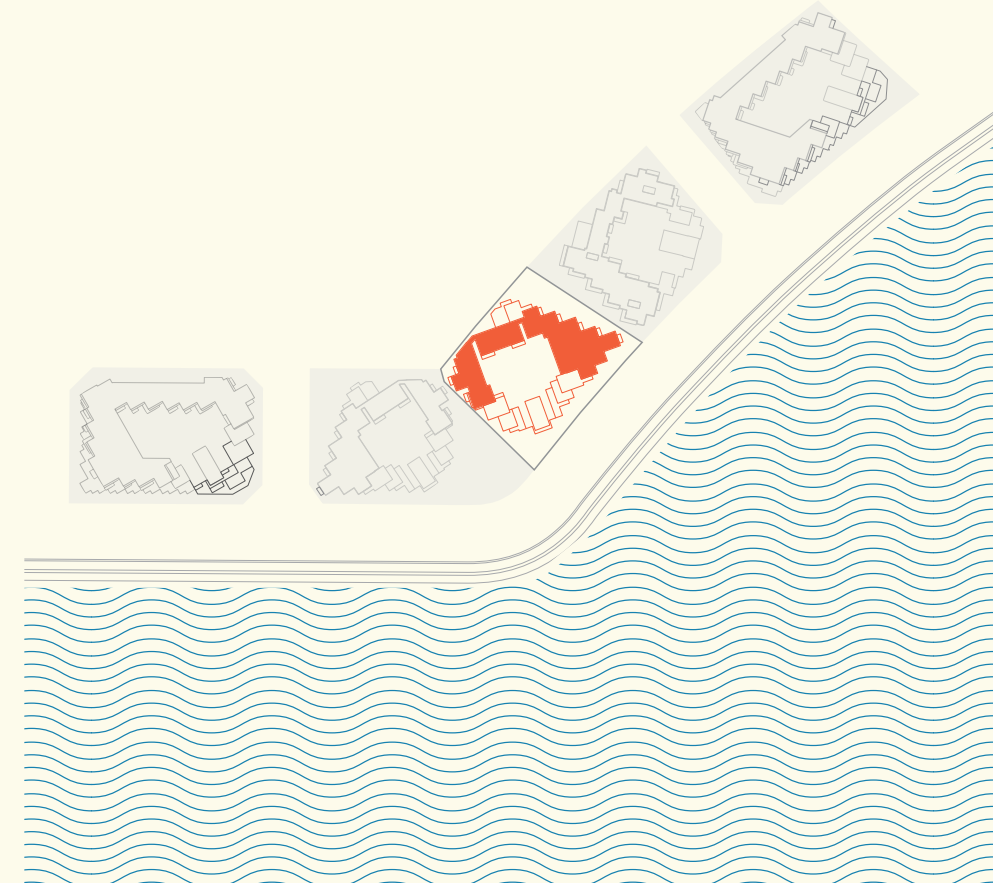
FLOORS

**TYPE A5**

**4, 5**

RESIDENCE	106 sqm 1,173 sqft
BALCONY / TERRACE	10 - 55 sqm 107 - 592 sqft
TOTAL	115 - 161 sqm 1,237 - 1,733 sqft

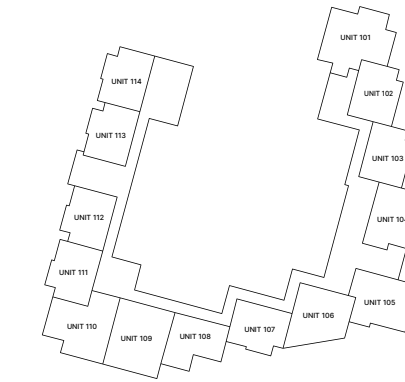
MASTERPLAN



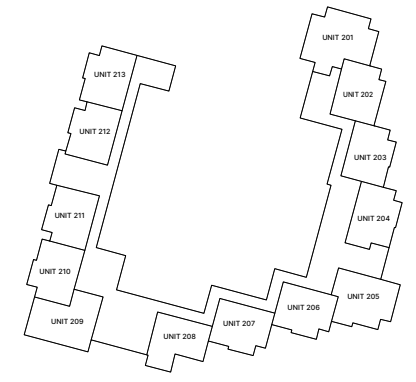
KEYPLAN



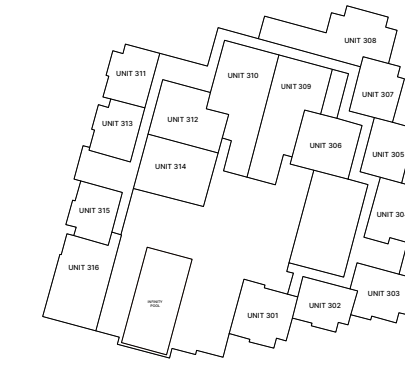
FLOOR 1



FLOOR 2



FLOOR 3



FLOOR 4



FLOOR 5



Disclaimer: All pictures, plans, layouts, information, data and details included in this brochure are indicative only and may change at any time up to the final 'as built' status in accordance with final designs of the project, regulatory approvals and planning permissions. All accessories and interior finishes such as wallpaper, chandeliers, furniture, electronics, white goods, curtains, hard and soft landscaping, pavements, features, gym, swimming pool(s) and other elements displayed in the brochure, or within the show apartment or between the plot boundary and the unit, are not part of the unit and are shown for illustrative purposes only.

**1-BEDROOM + DEN**

FLOOR

**TYPE A6**

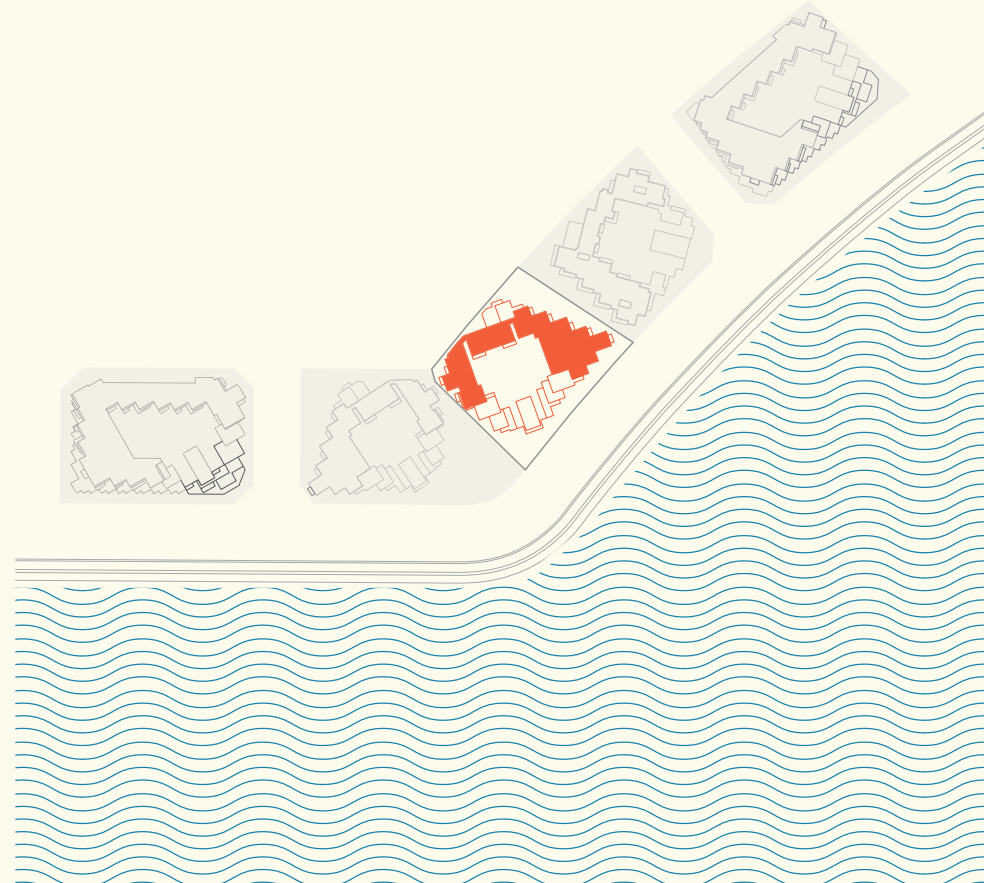
**4**

RESIDENCE 99 sqm  
1,065 sqft

BALCONY / TERRACE 134 sqm  
1,442 sqft

TOTAL 233 sqm  
2,507 sqft

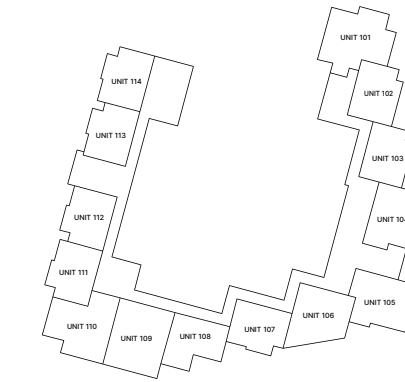
MASTERPLAN



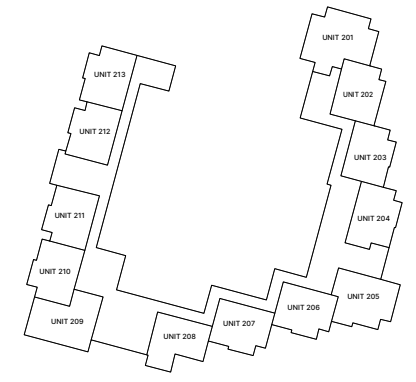
KEYPLAN



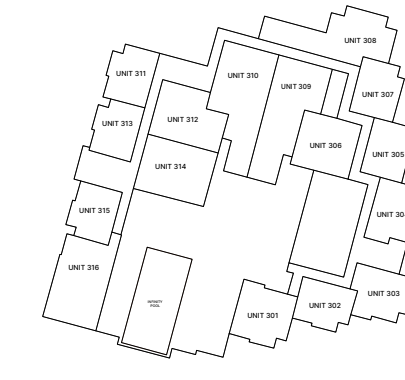
FLOOR 1



FLOOR 2



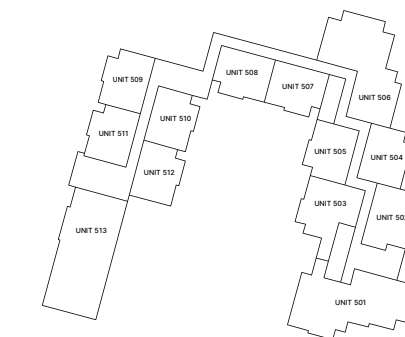
FLOOR 3



FLOOR 4



FLOOR 5



Disclaimer: All pictures, plans, layouts, information, data and details included in this brochure are indicative only and may change at any time up to the final 'as built' status in accordance with final designs of the project, regulatory approvals and planning permissions. All accessories and interior finishes such as wallpaper, chandeliers, furniture, electronics, white goods, curtains, hard and soft landscaping, pavements, features, gym, swimming pool(s) and other elements displayed in the brochure, or within the show apartment or between the plot boundary and the unit, are not part of the unit and are shown for illustrative purposes only.

**1-BEDROOM + DEN**

FLOORS

**TYPE A7**

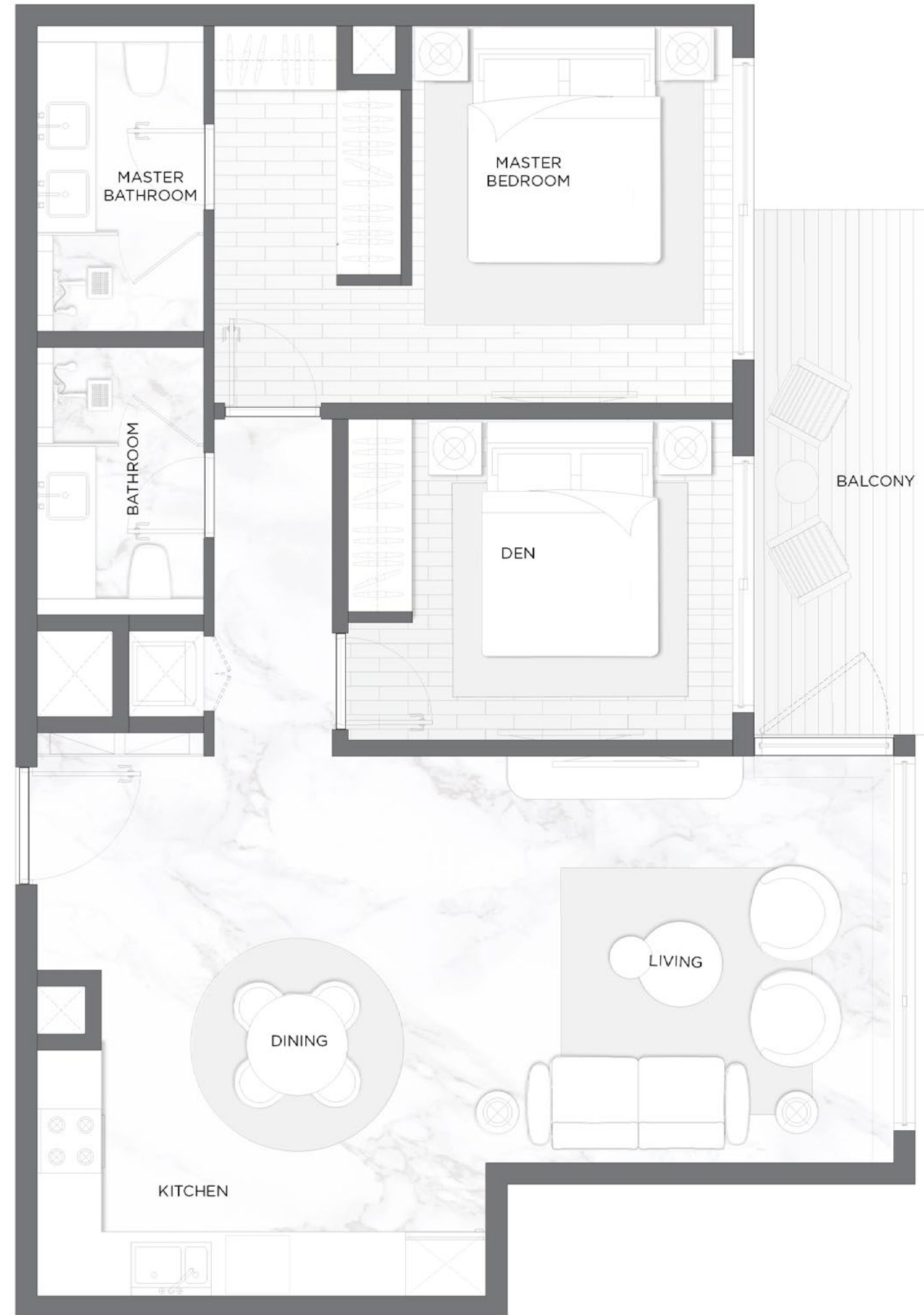
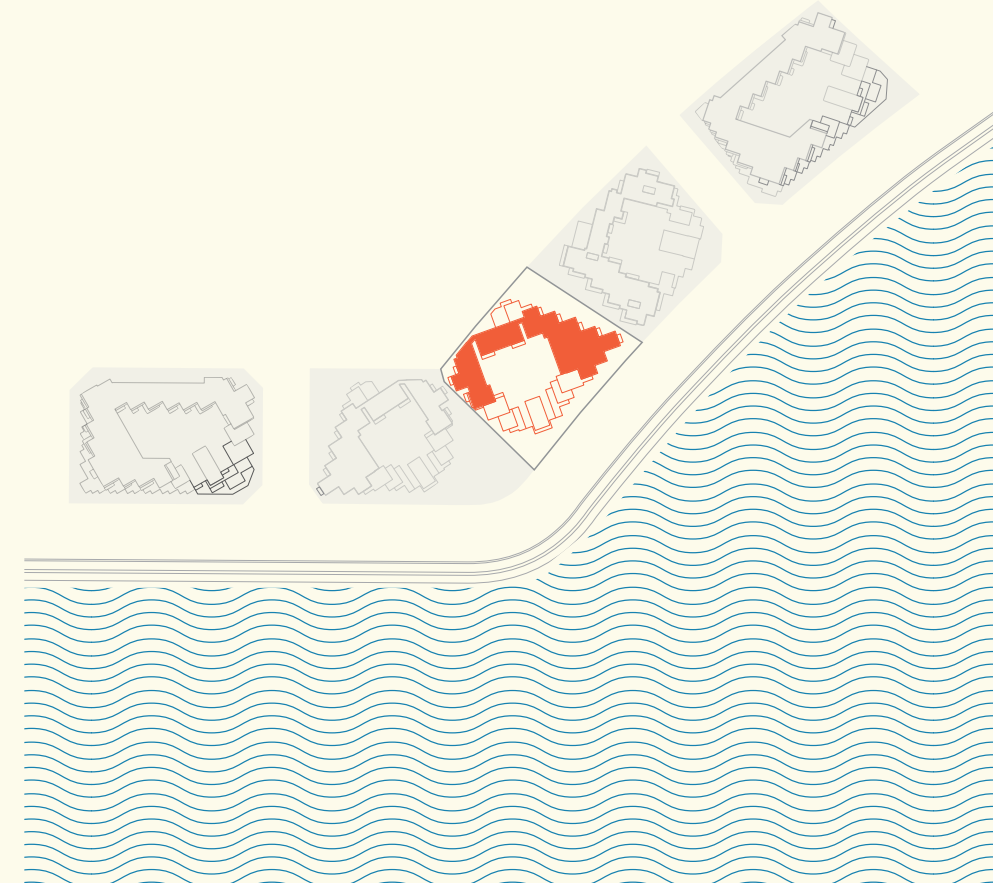
**1, 2, 3, 4, 5**

RESIDENCE 86 sqm  
925 sqft

BALCONY / TERRACE 8 sqm  
86 sqft

TOTAL 94 sqm  
1,011 sqft

MASTERPLAN



KEYPLAN



FLOOR 1



FLOOR 2



FLOOR 3



FLOOR 4



FLOOR 5



Disclaimer: All pictures, plans, layouts, information, data and details included in this brochure are indicative only and may change at any time up to the final 'as built' status in accordance with final designs of the project, regulatory approvals and planning permissions. All accessories and interior finishes such as wallpaper, chandeliers, furniture, electronics, white goods, curtains, hard and soft landscaping, pavements, features, gym, swimming pool(s) and other elements displayed in the brochure, or within the show apartment or between the plot boundary and the unit, are not part of the unit and are shown for illustrative purposes only.

**1-BEDROOM + DEN**

FLOOR

**TYPE A8**

**1**

RESIDENCE 90 sqm  
969 sqft

BALCONY / TERRACE 51 sqm  
549 sqft

TOTAL 141 sqm  
1,572 sqft

MASTERPLAN



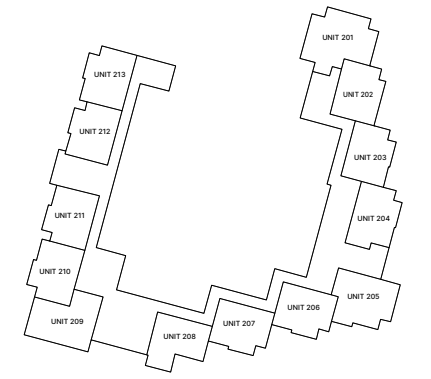
KEYPLAN



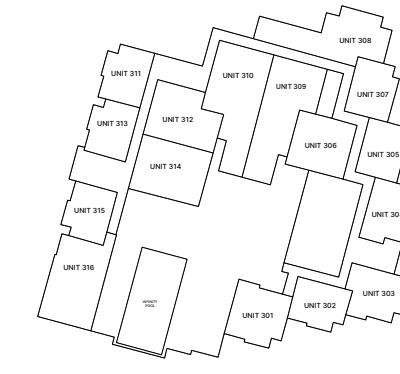
FLOOR 1



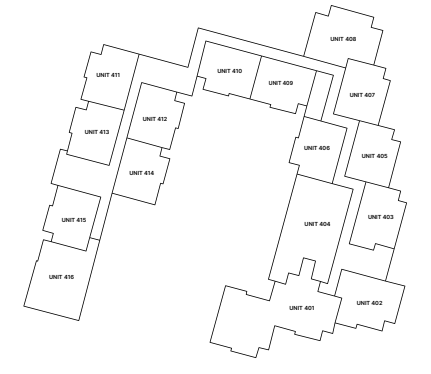
FLOOR 2



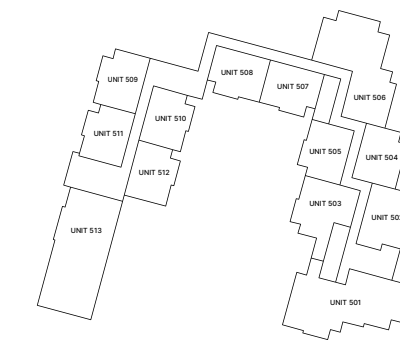
FLOOR 3



FLOOR 4



FLOOR 5



Disclaimer: All pictures, plans, layouts, information, data and details included in this brochure are indicative only and may change at any time up to the final 'as built' status in accordance with final designs of the project, regulatory approvals and planning permissions. All accessories and interior finishes such as wallpaper, chandeliers, furniture, electronics, white goods, curtains, hard and soft landscaping, pavements, features, gym, swimming pool(s) and other elements displayed in the brochure, or within the show apartment or between the plot boundary and the unit, are not part of the unit and are shown for illustrative purposes only.

**1-BEDROOM + DEN**

FLOORS

**TYPE B**

**1, 2**

RESIDENCE	110 - 111 sqm 1,184 - 1,194 sqft
BALCONY / TERRACE	18 - 25 sqm 194 - 269 sqft
TOTAL	129 - 136 sqm 1,388 - 1,463 sqft

MASTERPLAN



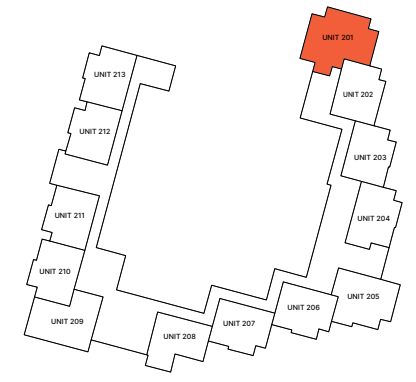
KEYPLAN



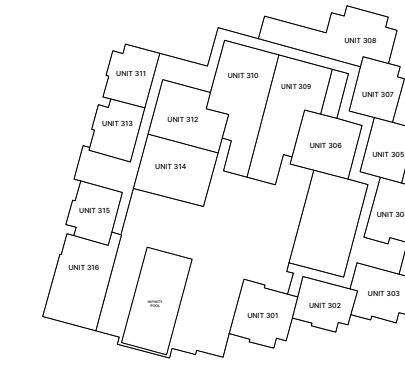
FLOOR 1



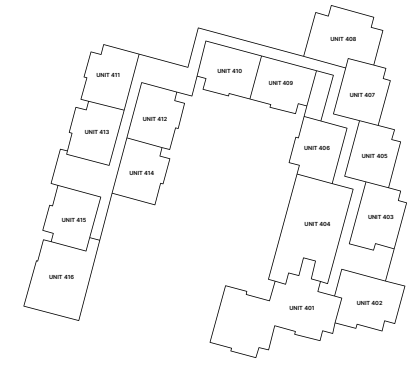
FLOOR 2



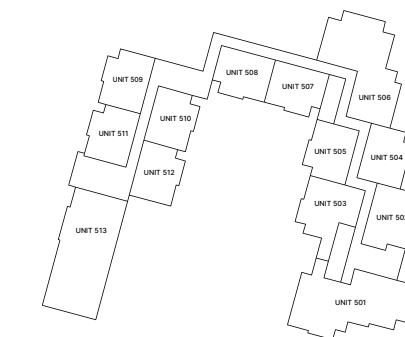
FLOOR 3



FLOOR 4



FLOOR 5



Disclaimer: All pictures, plans, layouts, information, data and details included in this brochure are indicative only and may change at any time up to the final 'as built' status in accordance with final designs of the project, regulatory approvals and planning permissions. All accessories and interior finishes such as wallpaper, chandeliers, furniture, electronics, white goods, curtains, hard and soft landscaping, pavements, features, gym, swimming pool(s) and other elements displayed in the brochure, or within the show apartment or between the plot boundary and the unit, are not part of the unit and are shown for illustrative purposes only.

**1-BEDROOM + DEN**

FLOORS

**TYPE B1**

**3, 4**

RESIDENCE	104 sqm 850 sqft
BALCONY / TERRACE	17 - 73 sqm 86 - 1,399 sqft
TOTAL	121 - 177 sqm 958 - 2,260 sqft

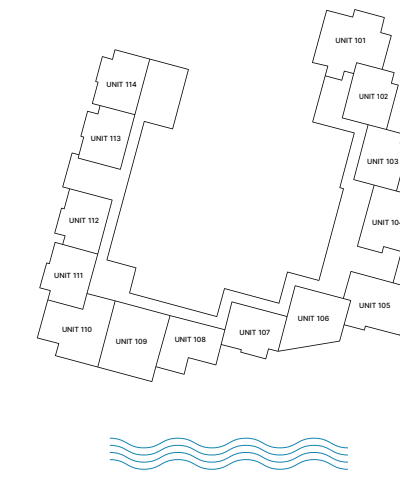
MASTERPLAN



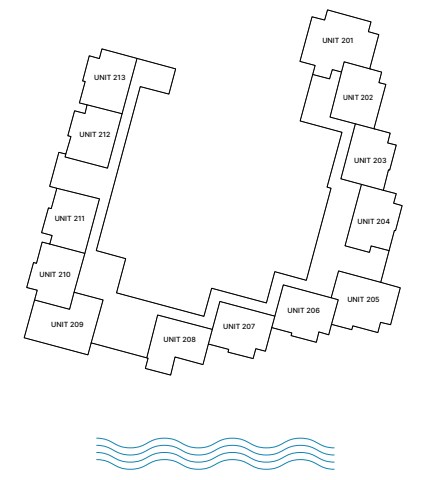
KEYPLAN



FLOOR 1



FLOOR 2



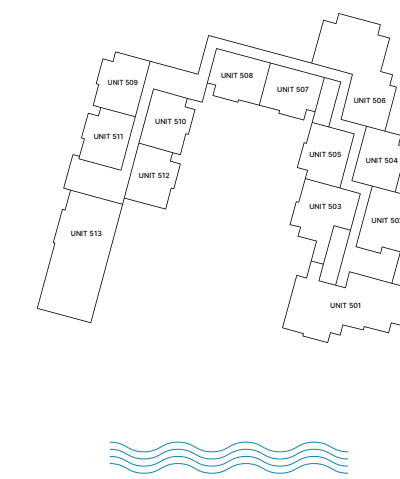
FLOOR 3



FLOOR 4



FLOOR 5



Disclaimer: All pictures, plans, layouts, information, data and details included in this brochure are indicative only and may change at any time up to the final 'as built' status in accordance with final designs of the project, regulatory approvals and planning permissions. All accessories and interior finishes such as wallpaper, chandeliers, furniture, electronics, white goods, curtains, hard and soft landscaping, pavements, features, gym, swimming pool(s) and other elements displayed in the brochure, or within the show apartment or between the plot boundary and the unit, are not part of the unit and are shown for illustrative purposes only.

**1-BEDROOM + DEN**

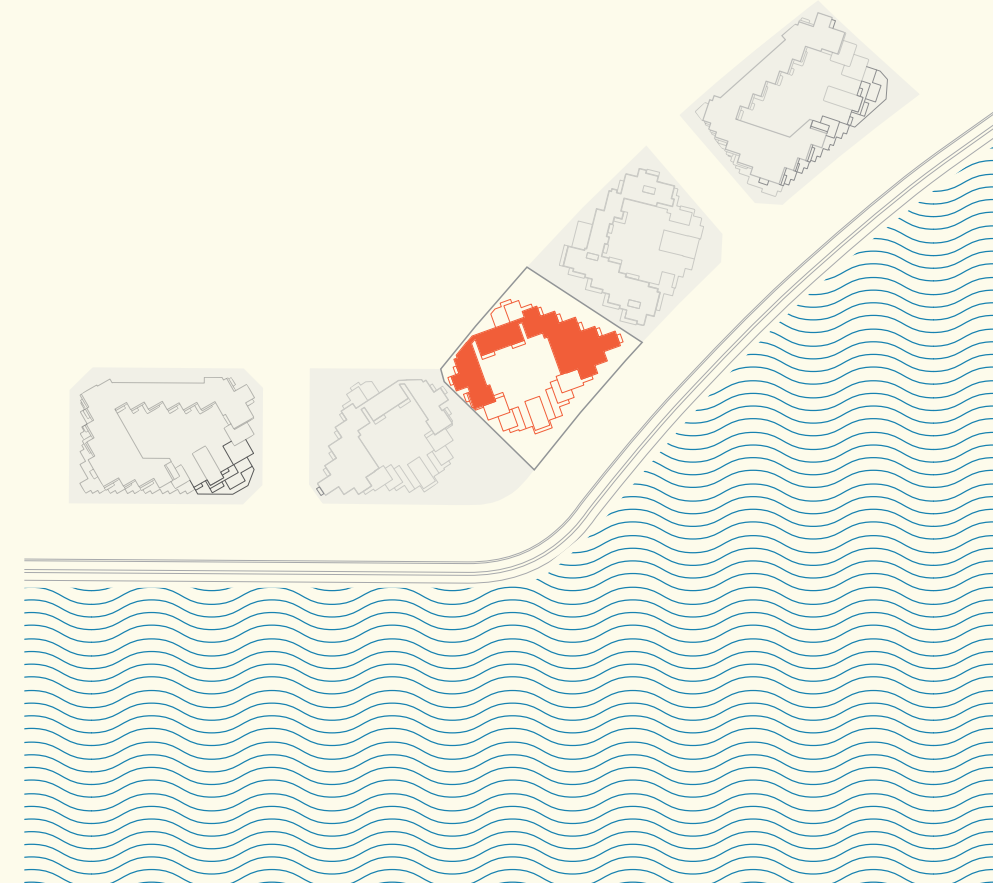
FLOORS

**TYPE C**

**1, 2**

RESIDENCE	88 sqm 947 sqft
BALCONY / TERRACE	22 - 42 sqm 236 - 452 sqft
TOTAL	111 - 131 sqm 1,194 - 1,410 sqft

MASTERPLAN



KEYPLAN



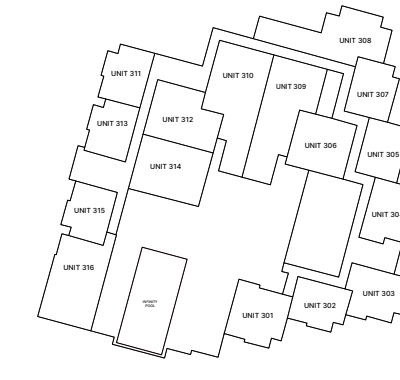
FLOOR 1



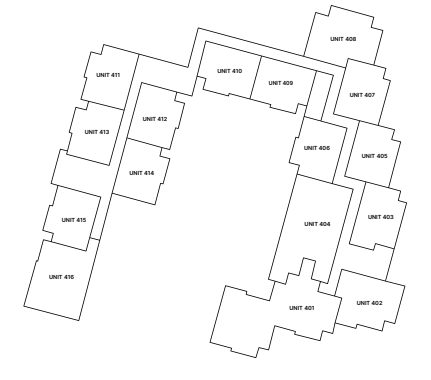
FLOOR 2



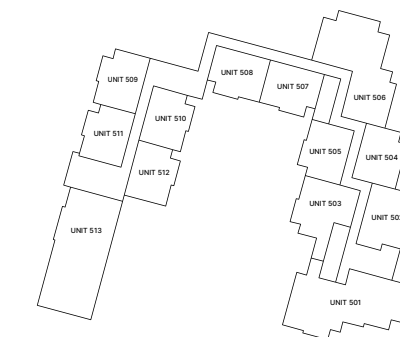
FLOOR 3



FLOOR 4



FLOOR 5



Disclaimer: All pictures, plans, layouts, information, data and details included in this brochure are indicative only and may change at any time up to the final 'as built' status in accordance with final designs of the project, regulatory approvals and planning permissions. All accessories and interior finishes such as wallpaper, chandeliers, furniture, electronics, white goods, curtains, hard and soft landscaping, pavements, features, gym, swimming pool(s) and other elements displayed in the brochure, or within the show apartment or between the plot boundary and the unit, are not part of the unit and are shown for illustrative purposes only.

**1-BEDROOM + DEN**

FLOORS

**TYPE D**

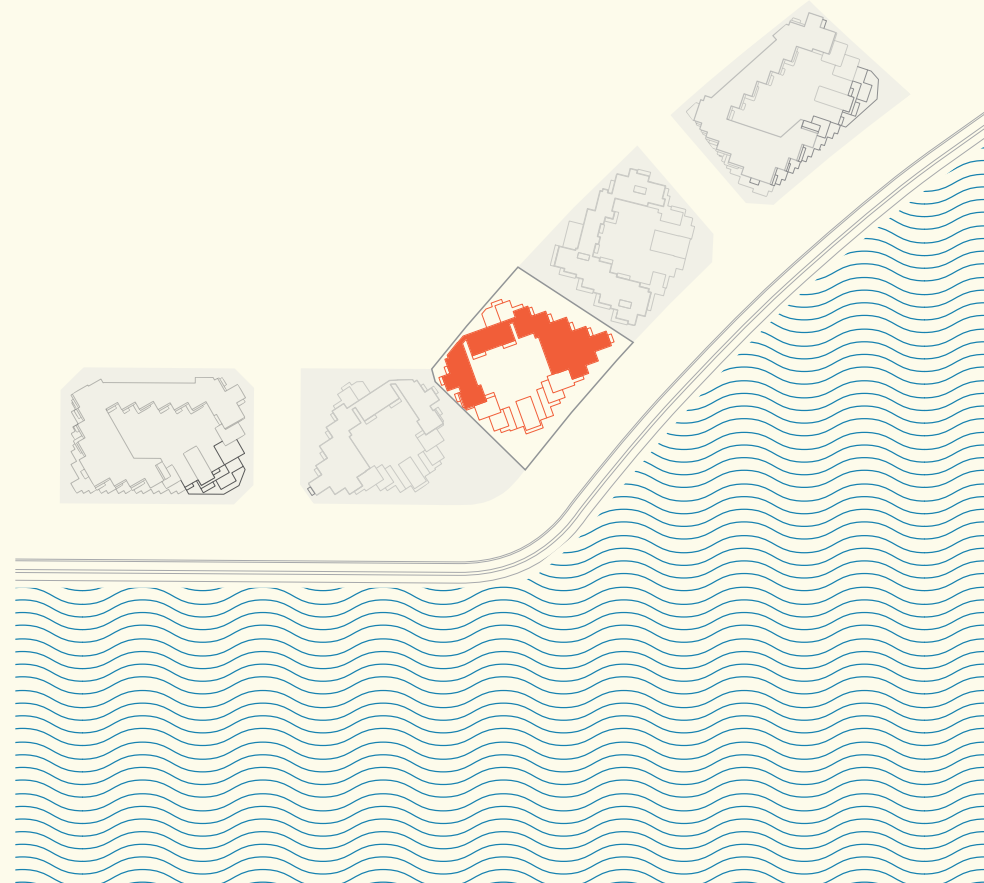
**3, 4**

RESIDENCE 108 sqm  
1,162 sqft

BALCONY / TERRACE 35 - 71 sqm  
376 - 764 sqft

TOTAL 144 - 179 sqm  
1,550 - 1,926 sqft

MASTERPLAN



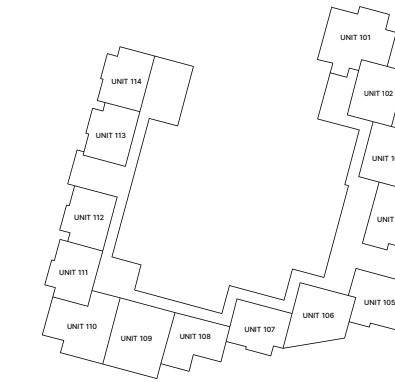
Disclaimer: All pictures, plans, layouts, information, data and details included in this brochure are indicative only and may change at any time up to the final 'as built' status in accordance with final designs of the project, regulatory approvals and planning permissions. All accessories and interior finishes such as wallpaper, chandeliers, furniture, electronics, white goods, curtains, hard and soft landscaping, pavements, features, gym, swimming pool(s) and other elements displayed in the brochure, or within the show apartment or between the plot boundary and the unit, are not part of the unit and are shown for illustrative purposes only.



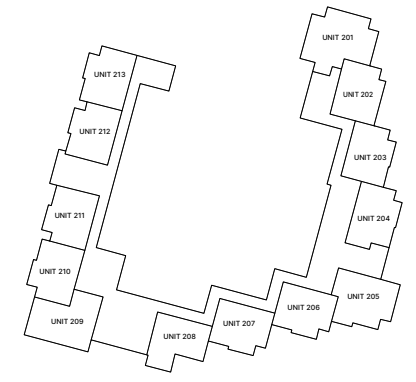
KEYPLAN



FLOOR 1



FLOOR 2



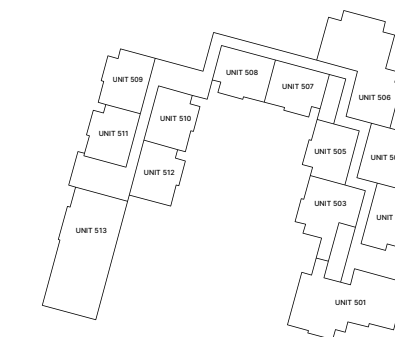
FLOOR 3



FLOOR 4



FLOOR 5



**1-BEDROOM + DEN**

FLOORS

**TYPE D1**

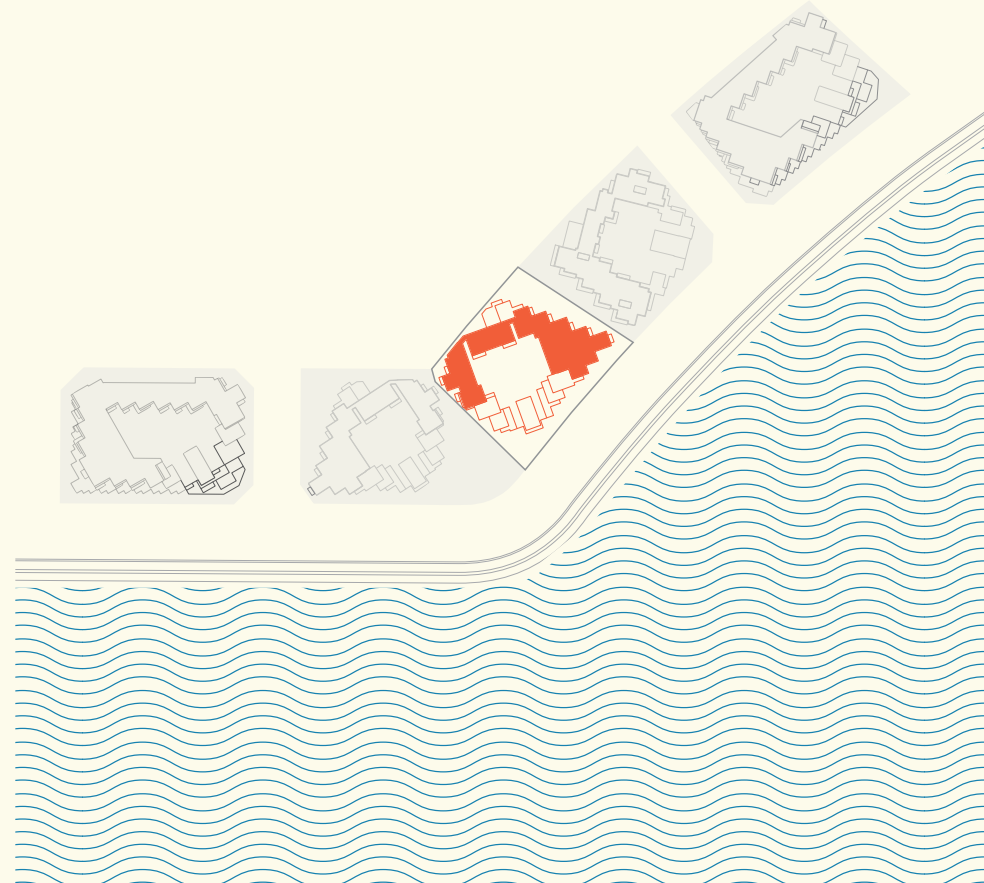
**5**

RESIDENCE 104 sqm  
1,119 sqft

BALCONY / TERRACE 149 sqm  
1,603 sqft

TOTAL 253 sqm  
2,723 sqft

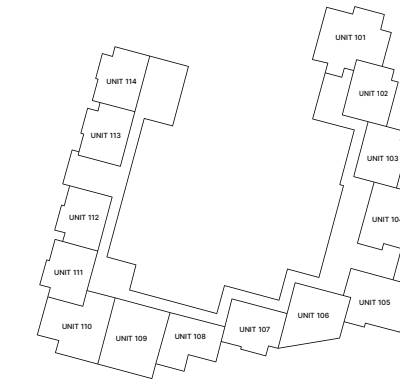
MASTERPLAN



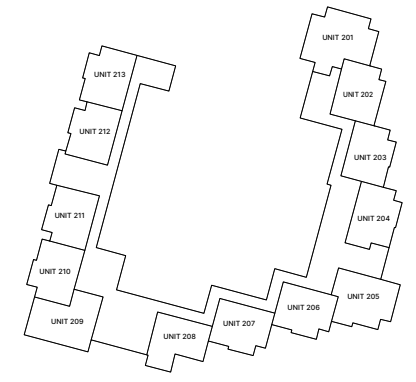
KEYPLAN



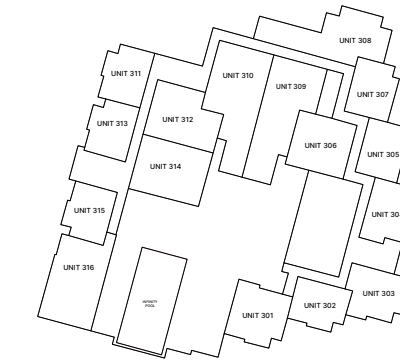
FLOOR 1



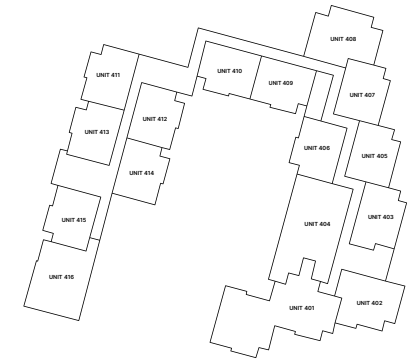
FLOOR 2



FLOOR 3



FLOOR 4



FLOOR 5



Disclaimer: All pictures, plans, layouts, information, data and details included in this brochure are indicative only and may change at any time up to the final 'as built' status in accordance with final designs of the project, regulatory approvals and planning permissions. All accessories and interior finishes such as wallpaper, chandeliers, furniture, electronics, white goods, curtains, hard and soft landscaping, pavements, features, gym, swimming pool(s) and other elements displayed in the brochure, or within the show apartment or between the plot boundary and the unit, are not part of the unit and are shown for illustrative purposes only.



## LIVE ALL IN

DarGlobal PLC is an international real estate developer specializing in exclusive luxury developments across the world's most coveted cosmopolitan cities.

Catering to global citizens seeking prime investments, second homes, and luxury living, DarGlobal transforms real estate into economic catalysts, unlocking opportunities for both investors and the countries it enters. DarGlobal has partnered with over 10 world-renowned luxury brands, including Trump Organization, Aston Martin, Automobili Lamborghini, ELIE SAAB, Marriott Residences, Missoni, Mouawad, Pagani Automobili, W Hotels, Versace, Fendi Casa, and Paramount. These collaborations offer unique investment opportunities in global cities, providing both wealth growth and protection.

Listed on the London Stock Exchange, DarGlobal goes beyond property development, it drives economic transformation by attracting international clients and Foreign Direct Investment (FDI). By injecting capital, confidence, and industry expertise, DarGlobal enhances local infrastructure while elevating the global appeal of each destination.

With a presence in 14 international cities across 7 countries, DarGlobal's portfolio spans the United Kingdom, Spain, Maldives, Saudi Arabia, the UAE, Oman, and Qatar. The company is also expanding into world-class hospitality, developing luxury hotels in Dubai, the Maldives, and Oman. To support its international clientele, DarGlobal has sales and customer service offices in New York, London, Marbella, Athens, Dubai, Jeddah, Riyadh, Muscat, and Doha.

## OUR OFFICES



### DUBAI, UAE

30th Floor, Jumeirah Emirates Towers,  
Sheikh Zayed Road. Dubai, UAE  
T +971 4562 9616

### MUSCAT, OMAN

Royal Opera House Muscat Shatti Al Qurum,  
Muscat, Oman  
T +968 2270 2771

### DOHA, QATAR

Malibu Building, Lusail Entertainment City,  
Doha, Qatar  
T +974 4410 8282

---

For more information on SEA LA VIE  
please call +974 4410 8282 (Qatar)

### LONDON, UK

50 Hans Crescent, Knightsbridge,  
London, SW1X 0NA, United Kingdom  
T +44 20 8135 4699

### RIYADH, KSA

2135 Tahlia St., Al Olaya,  
12222 Riyadh, ksa  
T 800 118 8081

### NEW YORK CITY, USA

19th floor, Trump Tower New York,  
725 5th Ave, New York, NY 10022, USA  
T +1 212 715 1067

You can visit our website at [darglobal.co.uk](http://darglobal.co.uk)  
or via our social media platforms



### MARBELLA, SPAIN

Golden Mile, Bulevar Príncipe Alfonso de Hohenlohe,  
Marbella 29602, Málaga, Spain  
T +34 95112 1221

### JEDDAH, KSA

Ash Shati, 23613, King Abdulaziz Road,  
Jeddah, ksa  
T 800 118 8081

### ATHENS, GREECE

7 Merlin Street, 10671, Attica,  
Athens, Greece



[DARGLOBAL.CO.UK](http://DARGLOBAL.CO.UK)