

Crafting Stories

# WESTCLAY

Sales Presentation

# Welcome

WESTCLAY offers excellent after-sales services to ensure a great living experience.

We are committed to supporting our residents and building a strong, lasting community.



# WESTCLAY



# Concept

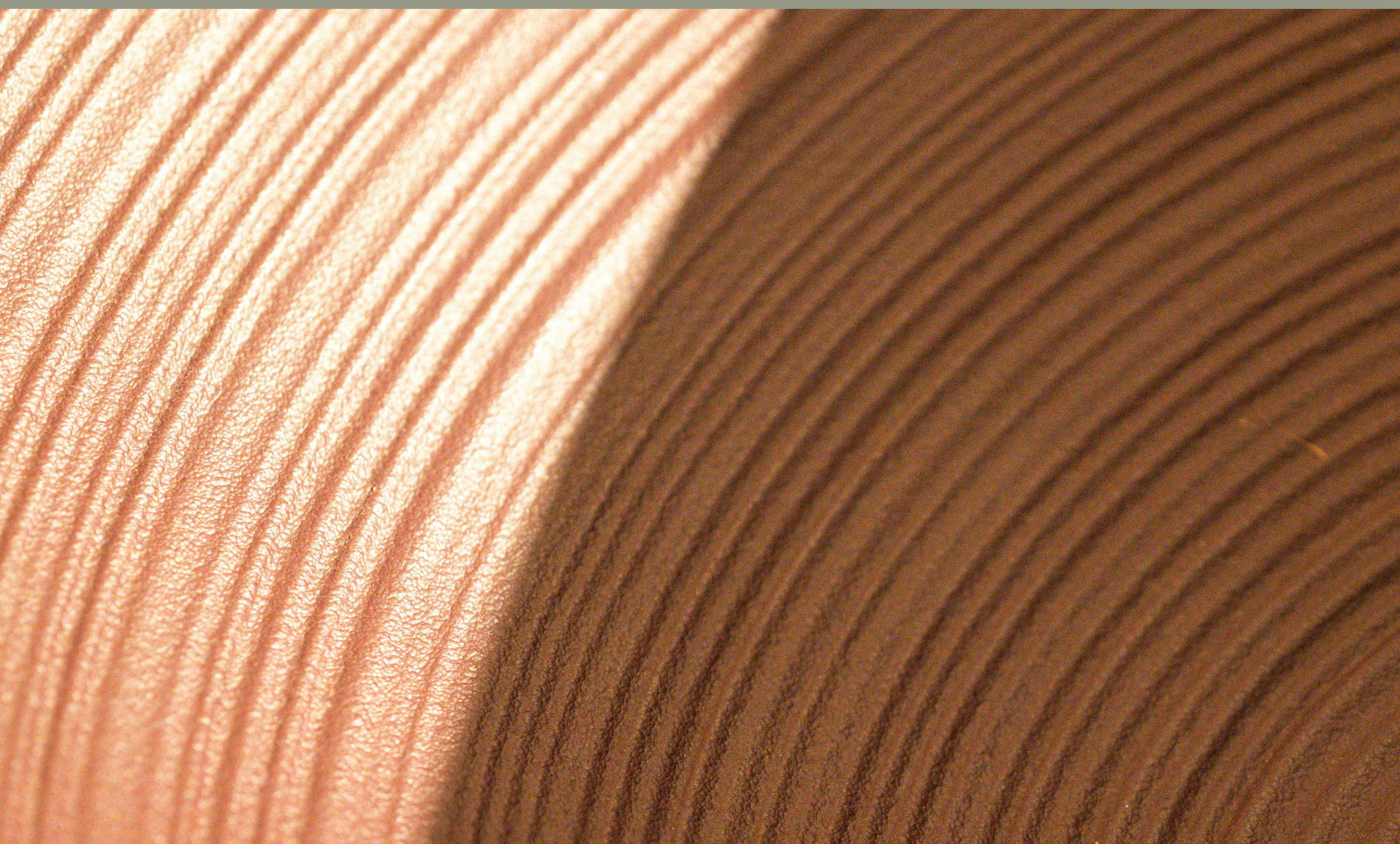
**WESTCLAY** created from the fusion of two key elements: “**West**” and “**Clay**.”

The term “**West**”

It reflects the development’s location in the western region, inspiring with a progressive Urban community.

**Clay** on the other hand, connects to a foundation or raw material that artisans shape into something of value and beauty.

It signifies the process of crafting and creating, pointing to how this compound aims to transform the landscape into a vibrant space where people can live, work, and thrive together.





# Project area

WESTCLAY is an area of **25 acres** covered with landscape & water features.





# Location

## Livable area

1 min away from the main axes:

Waslet Dahshour

26<sup>th</sup> July Axis

Al Wahat road



# WESTCLAY



# Livable area

3 mins Mall of Egypt

2 mins Juhayna Square

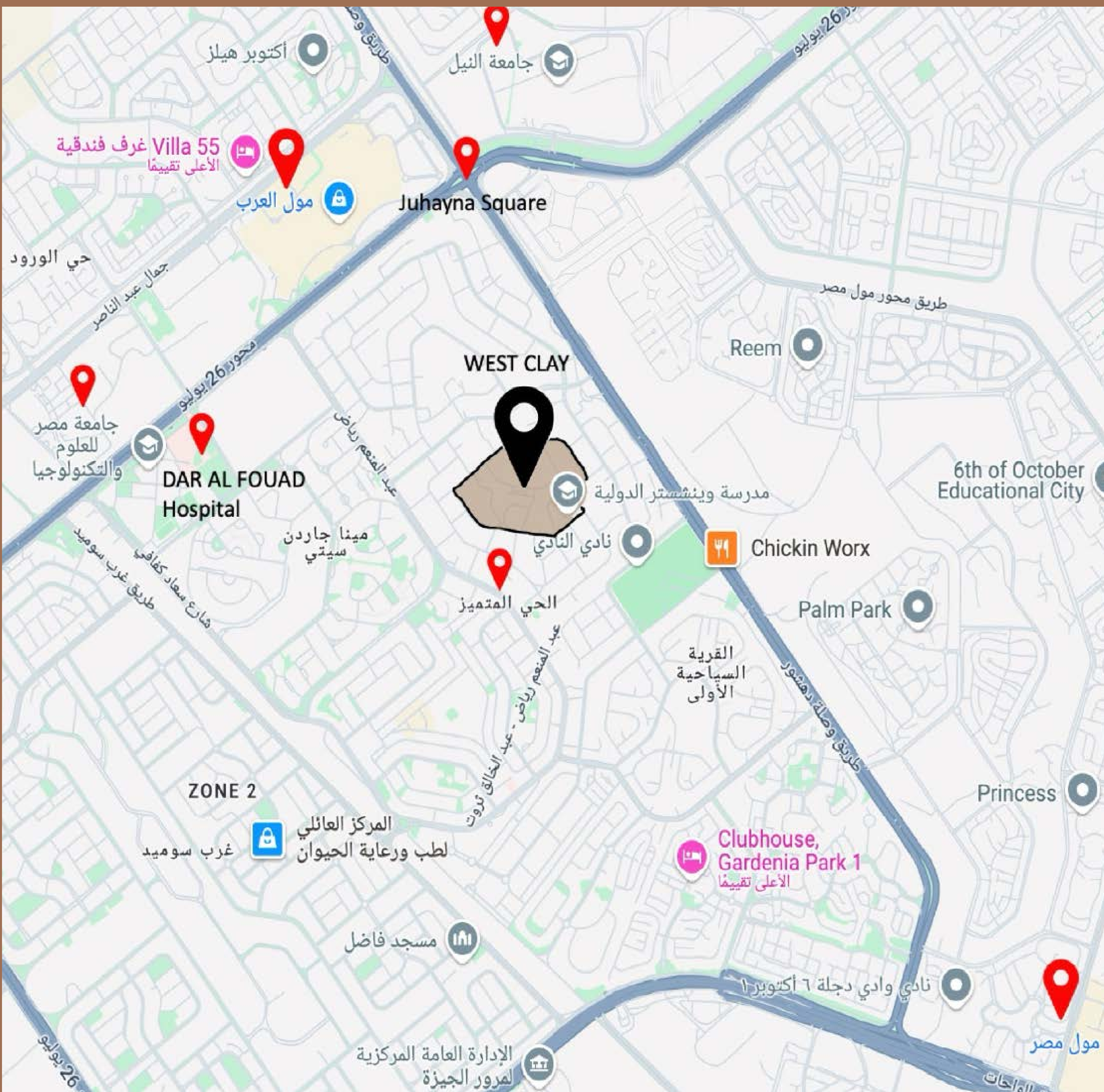
2 mins Nile University

3 mins Cairo University 6<sup>th</sup> of October

2 mins Dar Al Fouad (H)

1 mins Mall Of Arabia

2 mins Misr University





# Amenties

Our project consists of a residential area with wonderful landscape & water features, surrounded by full amenities for your happiness.



Clubhouse



Outdoor cinema

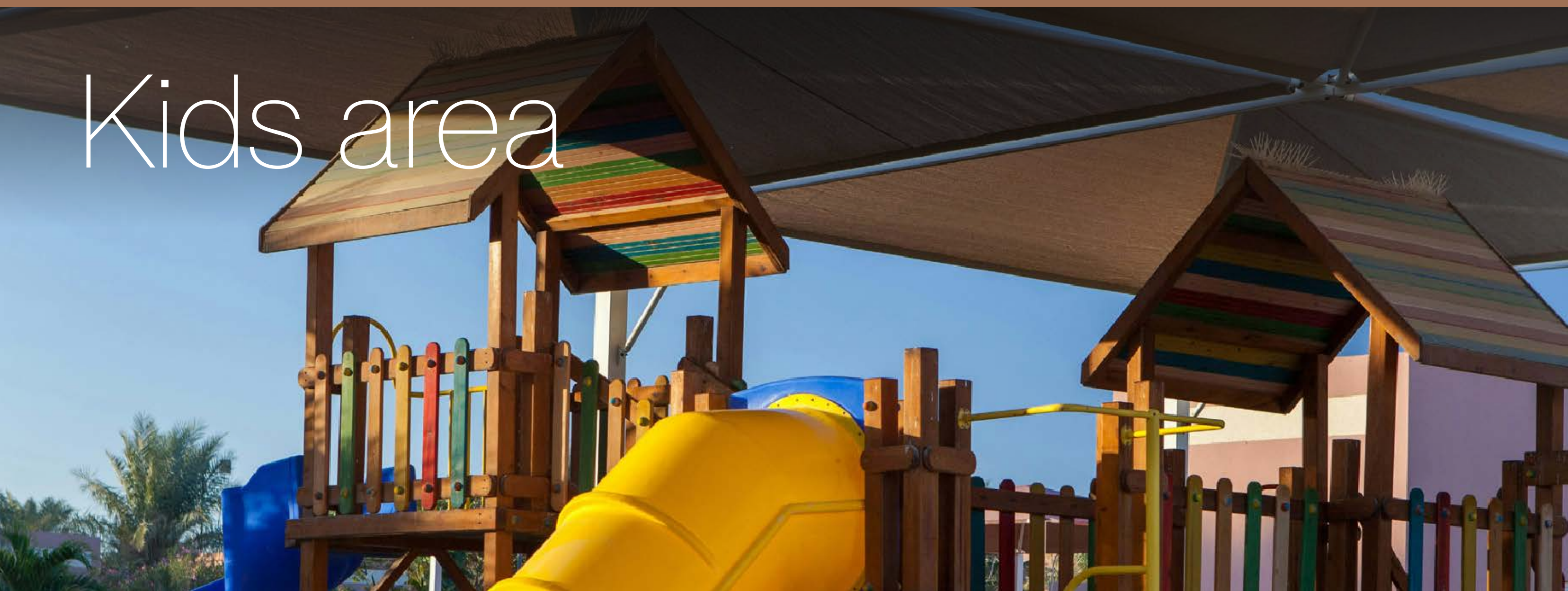


Barbecue areas



# Amenties

Kids area



Padel tennis



Football court



Walkway Area





# Amenities

Cycling tracks



Covered swimming pool



Landscape & water features



Business center





# Amenties

Commercial Hub



Medical center



International school



Luxury hotel apartments

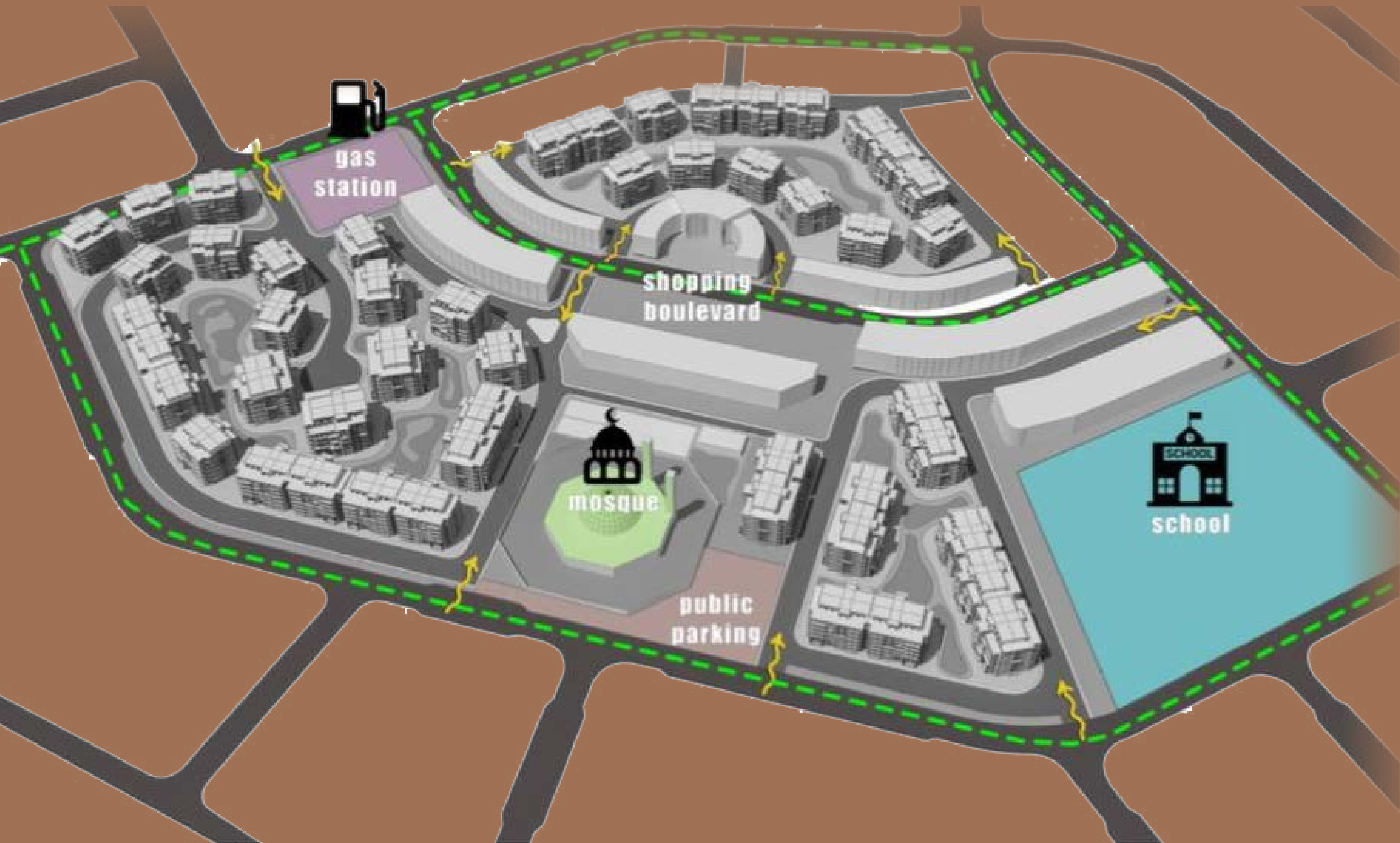




# Integrated Community

Surrounded by urban community with all your needs:

- International school
- Gas station
- Mosque
- Public Parking.





3D Gallery





3D Gallery





3D Gallery





3D Gallery





3D Gallery





# 3D Gallery





# 3D Gallery





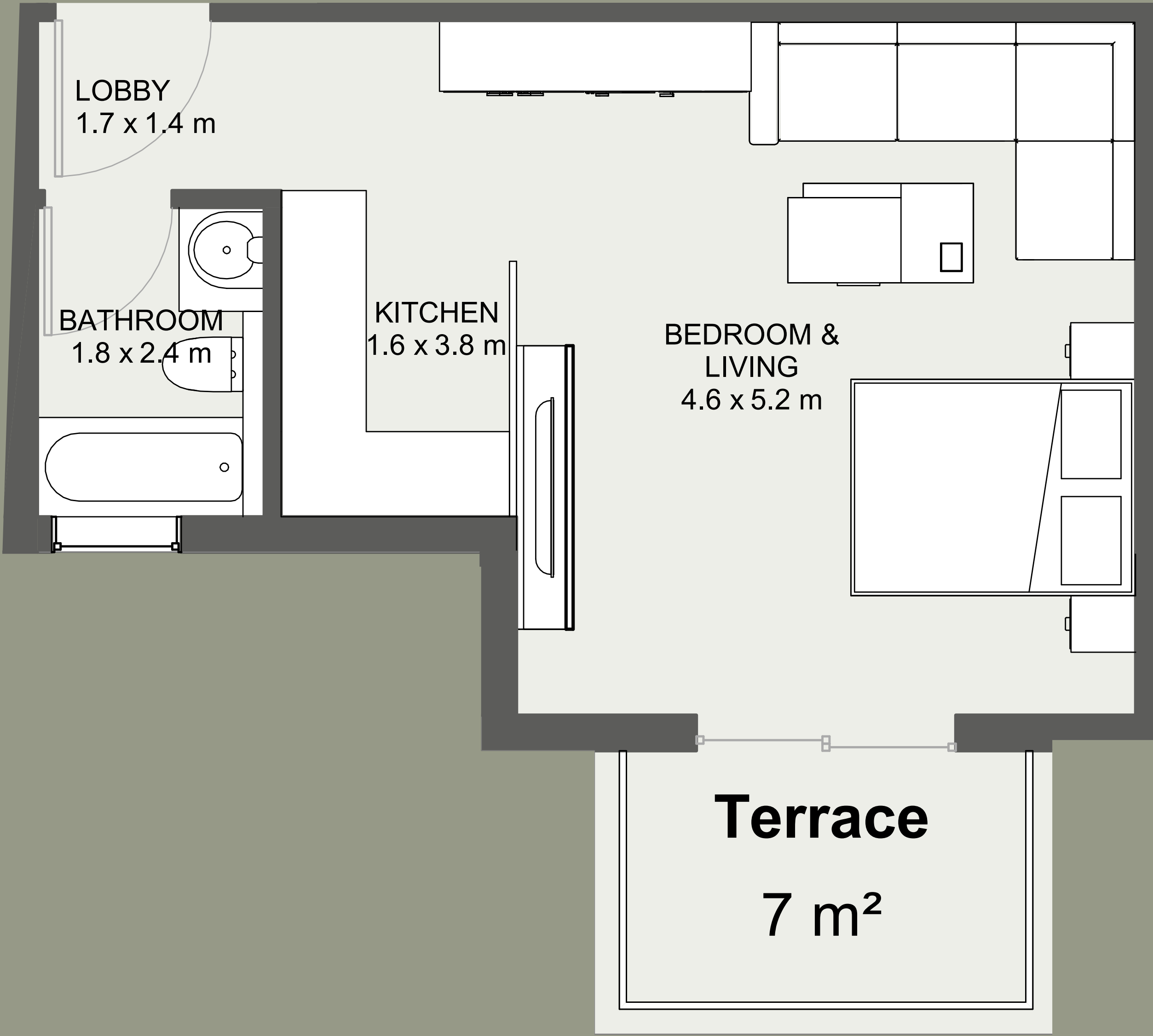
Types





Studio

Typical floor **58 m<sup>2</sup>**



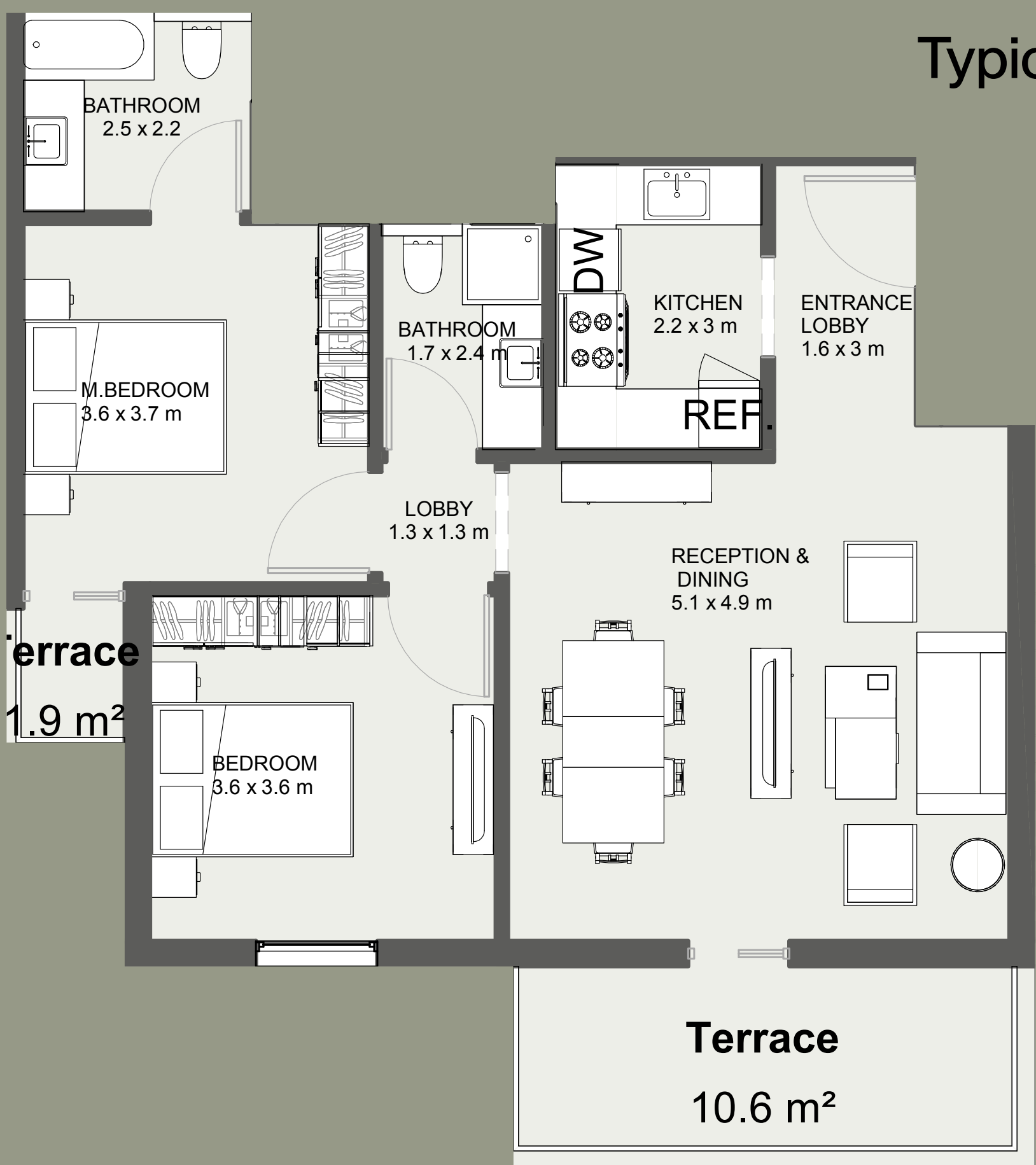


2 Bedrooms

Ground floor 110 m<sup>2</sup>



Typical floor 114 m<sup>2</sup>





3 Bedroom

Ground floor 151 m<sup>2</sup>



Typical floor 136 m<sup>2</sup>





# WESTCLAY

Crafting Stories