

NEW JERSEY
DEVELOPMENTS

H

Jamila®

NORTH COAST

16107

About **Jamila**[®]

NORTH COAST

At **Jamila**[®], We believe beauty is a deeply personal journey. It's not about extravagance, but about finding joy in the subtle details and the simple pleasures of life. We invite you to experience a world where luxury means pure experiences, not just material possessions.

At Jamila, we cherish easy living, mindful moments, and the beauty that surrounds us.



Jamila® Location

NORTH COAST

Location

Sidi Heneish

2.30 Hours from Cairo Gates

35 Minutes from International Airport

5 Minutes away from Almazah Bay

1.5 Hours from New Alamein



Land Area **130** Acres



Foot print **9** %



Beach front **700** M



Green spaces
& water features **91** %

Delivery
date:

3 years

Cairo

Facilities & Amenities

- 5 stars hotel
- F&B include all international franchises
- Commercial Mall include all international brands
- Sandy Swimming Pools
- Club House
Dancing fountain
- Gym & Spa
- Underground parking
- Beach Club house
- Kids Area





Products

Unit type

Cabanas

Chalet

1 bedroom
2 bedrooms
3 bedrooms

Duplex

Starting form

2 bedrooms

D-villa

Starting form

2 bedrooms



Spaces Starts
From

79 M2

Payment Plan

Down
Payment : 10 % - Over 8 Years



Layout & Design

Jamila is divided into two phases

■ First Phase
with area of **50** acres

■ Second phase
with an area of **80** acres



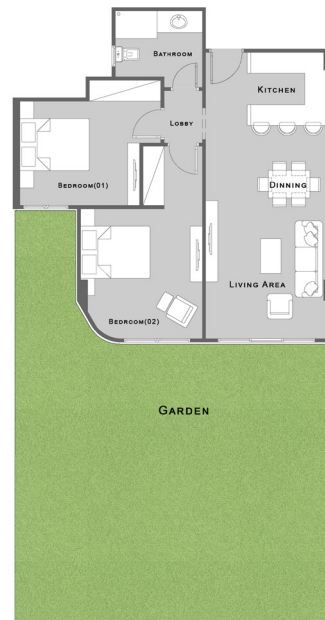


Ground Floor

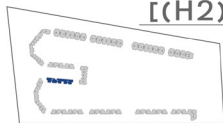
2 Bedrooms Unit

Area = **100** M²

1. Code : [(H1) (GR - 04)] - Garden = 91.06 m²
2. Code : [(H1) (GR - 05)] - Garden = 91.97 m²
3. Code : [(H2) (GR - 02)] - Garden = 91.07 m²
4. Code : [(H2) (GR - 03)] - Garden = 91.97 m²



[(H2) (GR-02)]



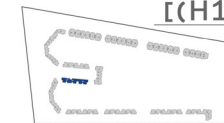
3 Bedrooms Unit

Area = **139** M² & **140** M²

1. Code : [(H1) (GR - 01)] - Garden = 98.14 m²
2. Code : [(H1) (GR - 06)] - Garden = 79.09 m²
3. Code : [(H2) (GR - 01)] - Garden = 79.98 m²
4. Code : [(H2) (GR - 06)] - Garden = 97.24 m²



[(H1) (GR-01)]

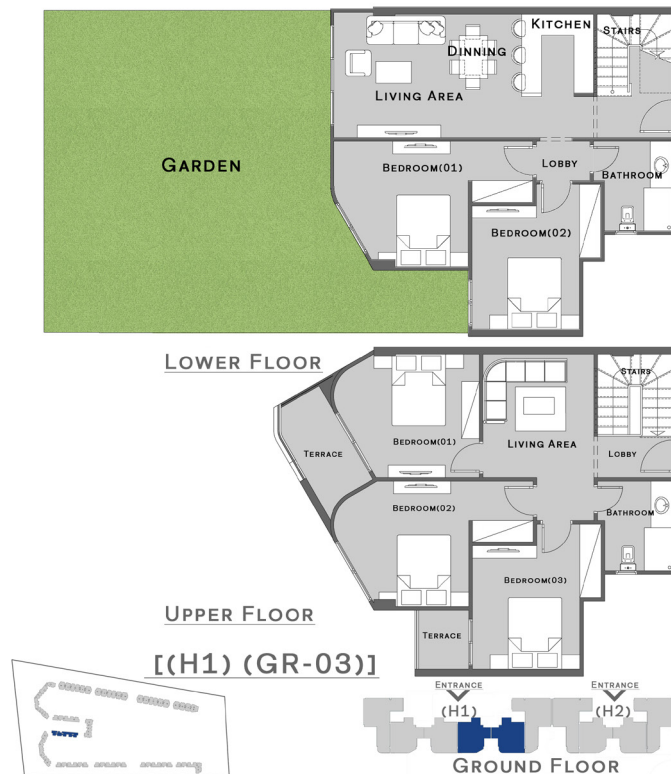


Ground Floor

Duplex Unit

Area = **209** M² & **219** M²

1. Code : [(H1) (GR - 02)] - Garden = 91.06 m²
2. Code : [(H1) (GR - 03)] - Garden = 91.96 m²

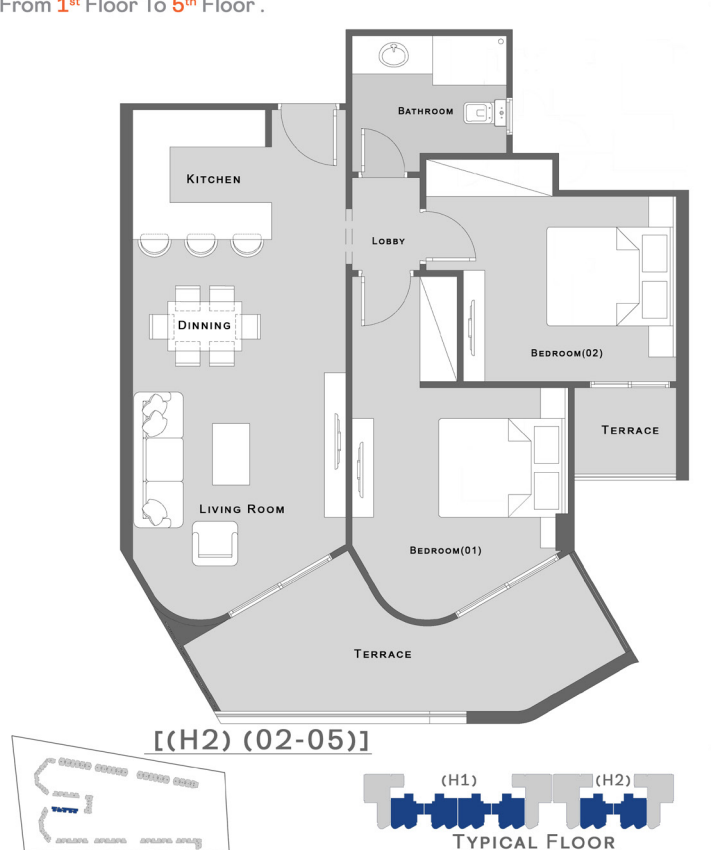


Typical Floor

2 Bedrooms Unit

Area = Strat **109** M² To **123** M²

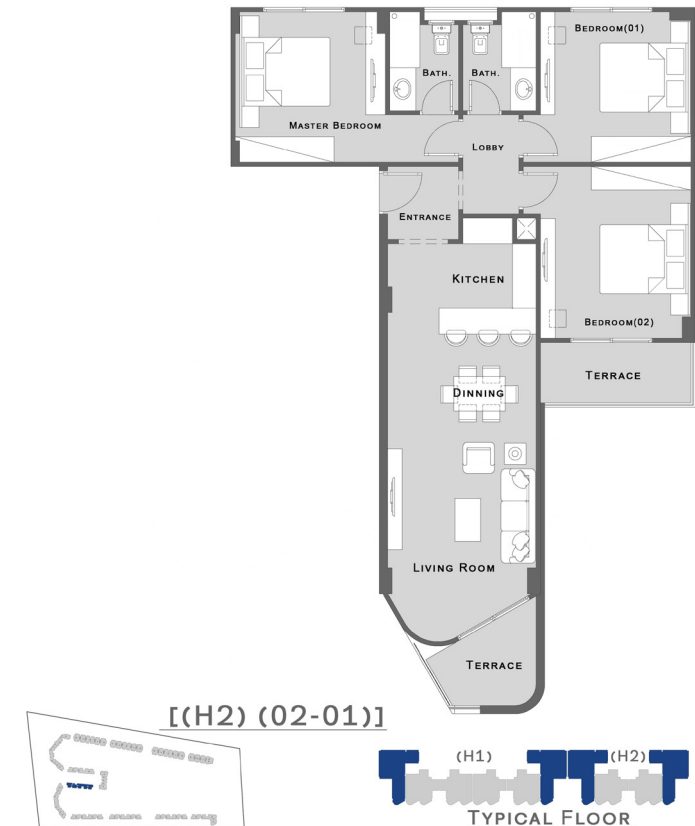
- From **1st** Floor To **5th** Floor .



3 Bedrooms Unit

Area = Strat **154** M² To **162** M²

- From **1st** Floor To **5th** Floor .



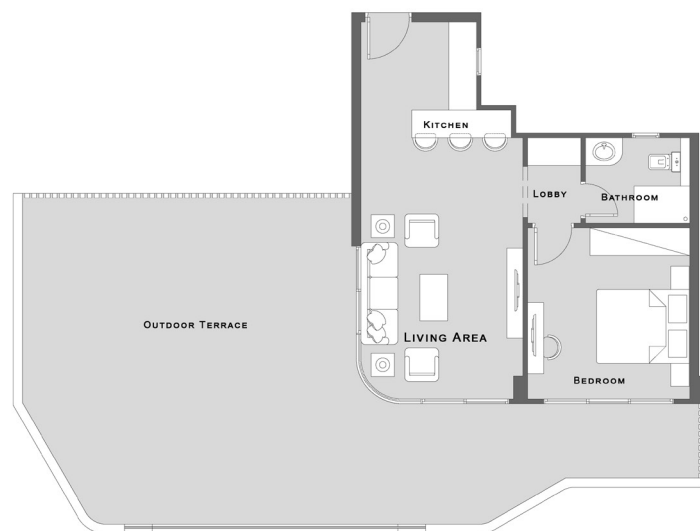
Roof Floor

1 Bedroom Unit

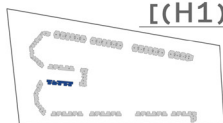
Area = **75** M²

1. Code : [(H1) (RF-01)] - Outdoor = 90.64 m²

2. Code : [(H1) (RF-04)] - Outdoor = 89.96 m²



[(H1) (RF-01)]



(H1)
ROOF FLOOR



Roof Floor



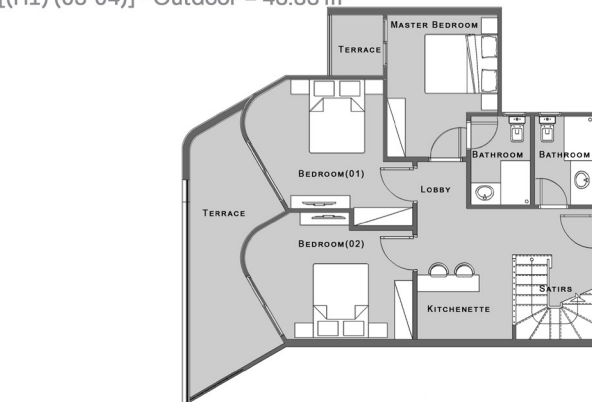
D VILLA

D - Villa

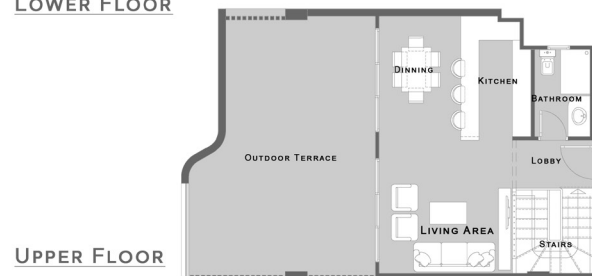
Area = **167** M² & **177** M²

1. Code : [(H1) (05-03)] - Outdoor = 40.50 m²

2. Code : [(H1) (05-04)] - Outdoor = 43.33 m²

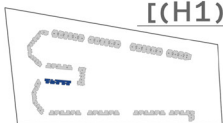


LOWER FLOOR



UPPER FLOOR

[(H1) (05-04)]



5th FLOOR







NJD NEW JERSEY
DEVELOPMENTS

Jamila[®]
NORTH COAST

www.jamilanorthcoast.com