



GROVE  
**UPTOWN**  
VIEWS

# EVERYTHING WE DO COMES FROM THE HEART

Abu Dhabi is our canvas, and Aldar's vision is to create a masterpiece.

We strive to shape an iconic skyline of communities where people love to live, in homes that brim with everything they love. Because as one of the most trusted and recognised real estate lifestyle developers in the UAE, it's our duty to make Abu Dhabi feel like home for everyone, every day.

Revenue

**AED 8.58 BN**  
FY 2021

Investment Portfolio Increase

**AED 1.0 BN**  
FY 2021

Net Profit

**AED 2.33 BN**  
FY 2021

Revenue Sales

**AED 7.2 BN**  
FY 2021



# THIS IS ABU DHABI

This is the UAE's forward-thinking cultural heart, where creativity knows no bounds. Where heritage is enriching, business is thriving and an exciting cosmopolitan lifestyle inspires people from all over the world to call this home.

# SAADIYAT ISLAND & THE CULTURAL DISTRICT

The white-sand island is the Capital's most sought-after destination for leisure, entertainment, luxury living, and something even more profound—culture. Designated as Abu Dhabi's Cultural District, the island will be home to the largest single concentration of cultural institutions in the world; the new pinnacle of art, culture and design.

At the heart of five international icons, including Louvre Abu Dhabi, Guggenheim Abu Dhabi and Zayed National Museum, Saadiyat Grove will introduce authentic, unexpected and inspiring experiences to the scene.



# A GROVE LIKE NO OTHER

An ever-evolving, ever-invigorating destination in the most happening corner of the island, Saadiyat Grove makes pedigreed art and culture a part of life. Interactive artworks and digital murals surround you, while exquisite style is reflected through every window. And the food is an experience in and of itself.

SAADIYAT  
**GROVE**

LIVING INSPIRATION



# GUGGENHEIM ABU DHABI

The first museum of its kind in the region, with a vision to spark interest in contemporary art, and provide a powerful new creative platform for artists around the world.



# ZAYED NATIONAL MUSEUM

The magnificent centrepiece of the Cultural District celebrates the life of our founding father and tells the story of the UAE. A precious link between ancient past and modern day.

# LOUVRE ABU DHABI


An architectural masterpiece and international icon, where treasures from near and far, past, present and future, are admired together under a rain of light.



# NATURAL HISTORY MUSEUM ABU DHABI

This is where the history of life on Earth is told through unique collections and exhibitions, while scientists tackle some of the biggest challenges facing the world today.



An architectural rendering of a large, modern building with a facade of vertical, textured panels. The building is set in a landscaped area with palm trees, other greenery, and people walking around. The sky is a deep blue, suggesting dusk or dawn. The overall style is clean and contemporary.

# THE ABRAHAMIC FAMILY HOUSE

The first ever interfaith community in the UAE, where three religious spaces are connected, to encourage acceptance between Christianity, Islam and Judaism.



# HOME IN THE HEART OF INSPIRATION

Grove Views is the residential extension of Saadiyat Grove, located in the very heart of the destination and surrounded by shopping, dining, art, and culture to suit every personality. Whether you crave luxurious beauty, urban energy, or the reinvigorating infusion of nature, these studios to 2-bed apartments keep you connected to what you love.



# GROVE UPTOWN VIEWS

A home that puts you in the electric epicentre of Saadiyat Grove living, surrounded by modern restaurants, fashion outlets, world-class facilities, and the pristine Saadiyat Beach. Not to mention a buzzing art scene and some of the most inspiring museums on the planet—including the iconic, Guggenheim Abu Dhabi.

# LIVE TO YOUR OWN BEAT



Grove Uptown Views' lobby extends into the Music Lab. An exclusive vinyl record library, where you're free to browse & broaden your acoustic tastes with shelves of new music, or maybe—delight in the discovery of an old favourite.



# DESIGNED TO MAKE ANYTHING POSSIBLE

A building with space for life to expand—into private dinners or packed parties; laidback afternoons on the lawn, or powerful laps of the track. There are areas to enjoy and gardens to explore. And just when you think you've covered it all, you step out onto the bustling streets of shops, restaurants, and wonders.

# GROVE RETAIL

Follow the pull of the city to the shopping avenues, where you'll find fashion of every shape & size, and food of every culture & flavour.



A woman with long dark hair, wearing a blue ruffled blouse, is seen from the side, looking at a row of books on a wooden library shelf. She has blue nail polish, a silver watch, and several colorful beaded bracelets on her left wrist. Her right hand is resting on a book. The background is a blurred library setting with more bookshelves.

## REJUVENATION LOUNGE

A retreat from the rush, where you can indulge in engaging conversations, lively games of backgammon and chess, or a riveting read in the library.


# POWER UP IN THE HEART OF IT ALL

There are facilities to push your fitness, green spaces to clear your mind, and views that spark inspiration. This is a building that's always ready for action.

The image is a composite of two photographs. The left side shows a modern pool deck with two wooden lounge chairs with white fabric, set against a background of vertical grey slats. The right side, separated by a white, torn-paper-like border, shows a close-up of a person's face floating in clear blue water, with their eyes closed and a serene expression. The overall aesthetic is clean, minimalist, and relaxing.

# XL POOL

Dive into the waters of the podium pool, or relax on its sundeck, while Guggenheim Abu Dhabi glistens in the background.



# PODIUM GYM

Start the day right at the state-of-the-art poolside gym, and finish your set with a cooling dip.



## CYCLE RACKS

When your muscles need to move,  
your bike is conveniently stored and  
ready to go.

# BENEFITS



## WELLNESS

POOLSIDE GYM

DIRECT ACCESS TO GREEN LOOP AND JOGGING TRACK

INSPIRATION LAWN

CYCLE RACKS

MULTI-USE YOGA & PILATES STUDIO

## RECREATION & COMMUNITY ENGAGEMENT

INTEGRATED MUSIC LAB

SOCIAL CENTRE COMMUNITY SPACE

XL POOL WITH PARTIAL MUSEUM VIEWS

REJUVENATION LOUNGE ACCESS

TERRACE GARDEN WITH SEATING AREA

DIRECT ACCESS TO GROVE RETAIL

## PAID SERVICES

MAINTENANCE SERVICES  
(INCLUDING HANDYMAN, PAINTING, MINOR  
REPAIRS, & PEST CONTROL)

PET SITTING & PET SPA

SMART-HOME PACKAGE

BABYSITTING, PERSONAL TRAINING,  
PERSONAL SHOPPER, INTERIOR DESIGN,  
COURIER DELIVERY, FLORIST



# AVANT-GARDE FINISHES

An urban design philosophy pulses throughout Grove Uptown Views, bringing bold artistic flair to the space around you. Creative use of colour, modern materials, and high-quality finishes, form a unique interpretation of premium living.



**MATERIALS FINISHES  
(LIVING, DINING, BEDROOMS,  
CORRIDORS & KITCHENS)**

INTERIOR DOORS		WOOD VENEER	
FLOORING & SKIRTING		PORCELAIN TILES	
WALL	EMULSION PAINT	BACKSPLASH	FROSTED GLASS
CABINETS & WARDROBES		LAMINATE VENEER	
KITCHEN COUNTER		RECONSTITUTE STONE	

**MATERIALS FINISHES  
(GUEST TOILETS & BATHROOMS)**

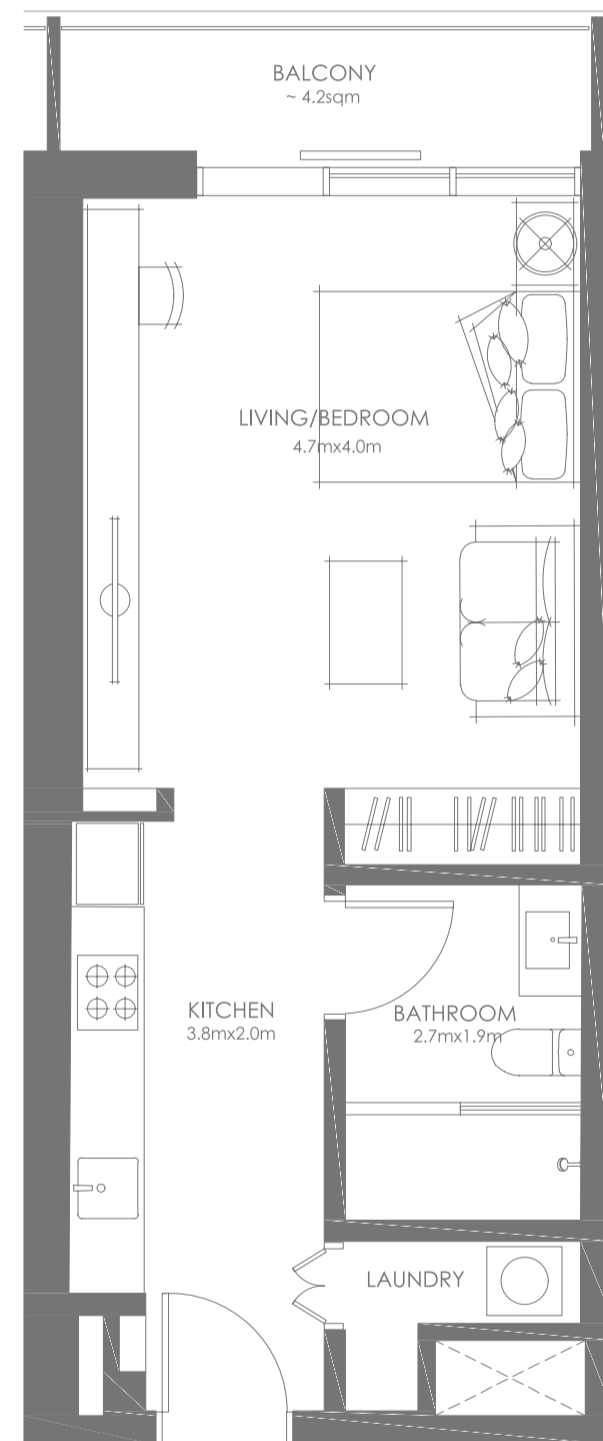
FLOORING	PORCELAIN TILES
WALL	CERAMIC TILES



# YOUR NEW REALITY STARTS HERE

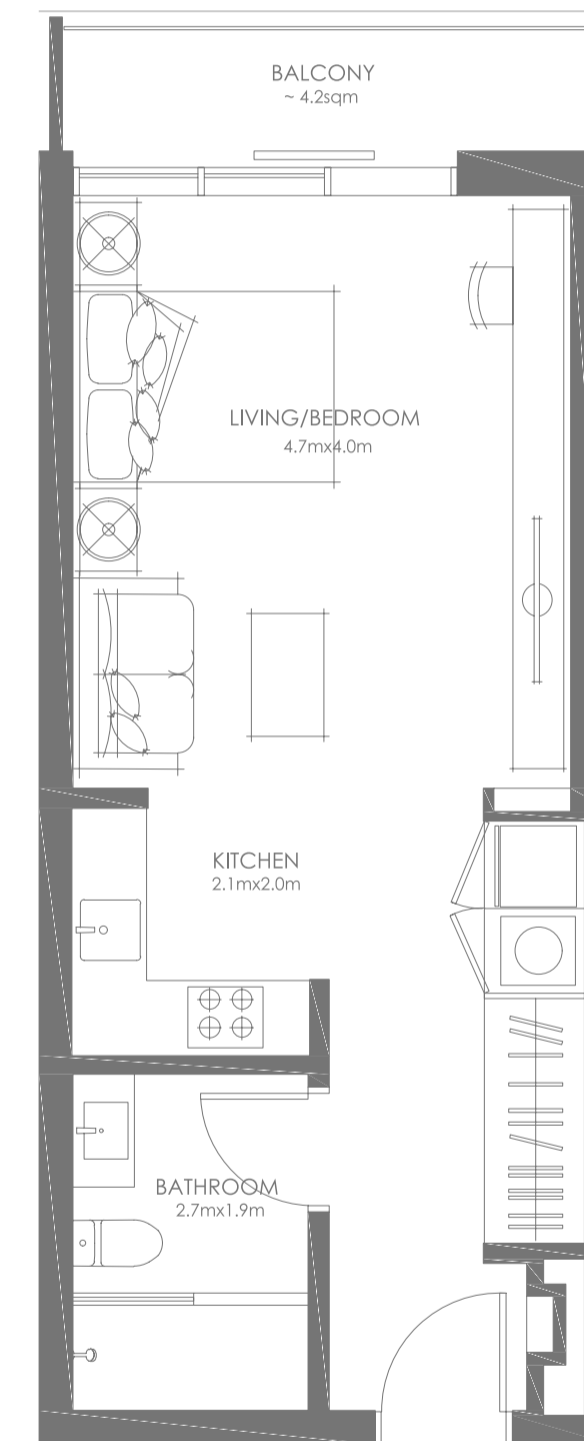
Choose your space, from a studio to 2-bed apartment, and begin planning the layout for a vibrant home of your own.

## STUDIO — TYPE A



Disclaimer: This plan is reproduced for illustrative purposes as an example of a typical plot layout and Aldar makes no representation of warranty in relation to any of the information shown.

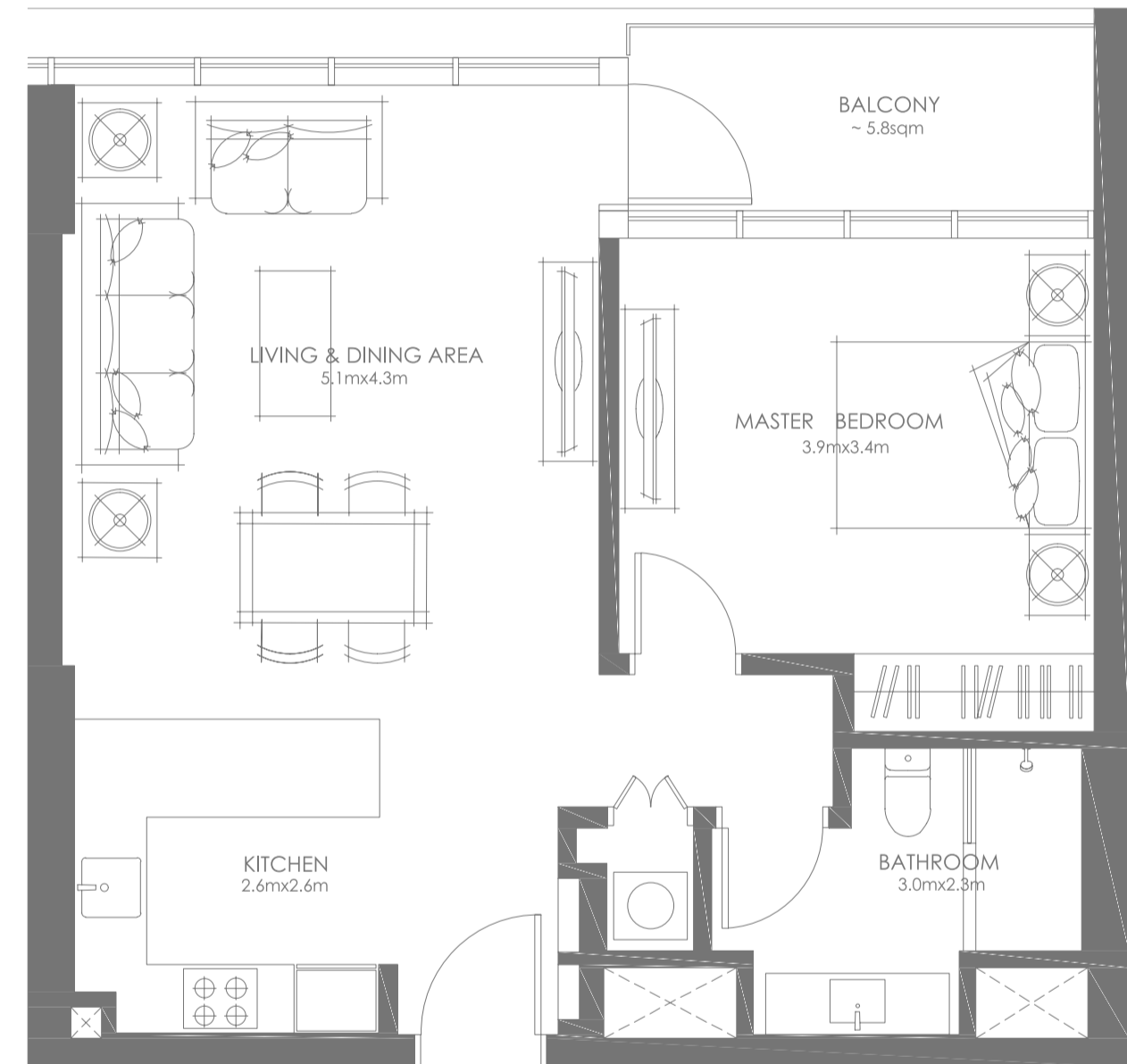
## STUDIO — TYPE B



Disclaimer: This plan is reproduced for illustrative purposes as an example of a typical plot layout and Aldar makes no representation of warranty in relation to any of the information shown.



# 1 - BEDROOM



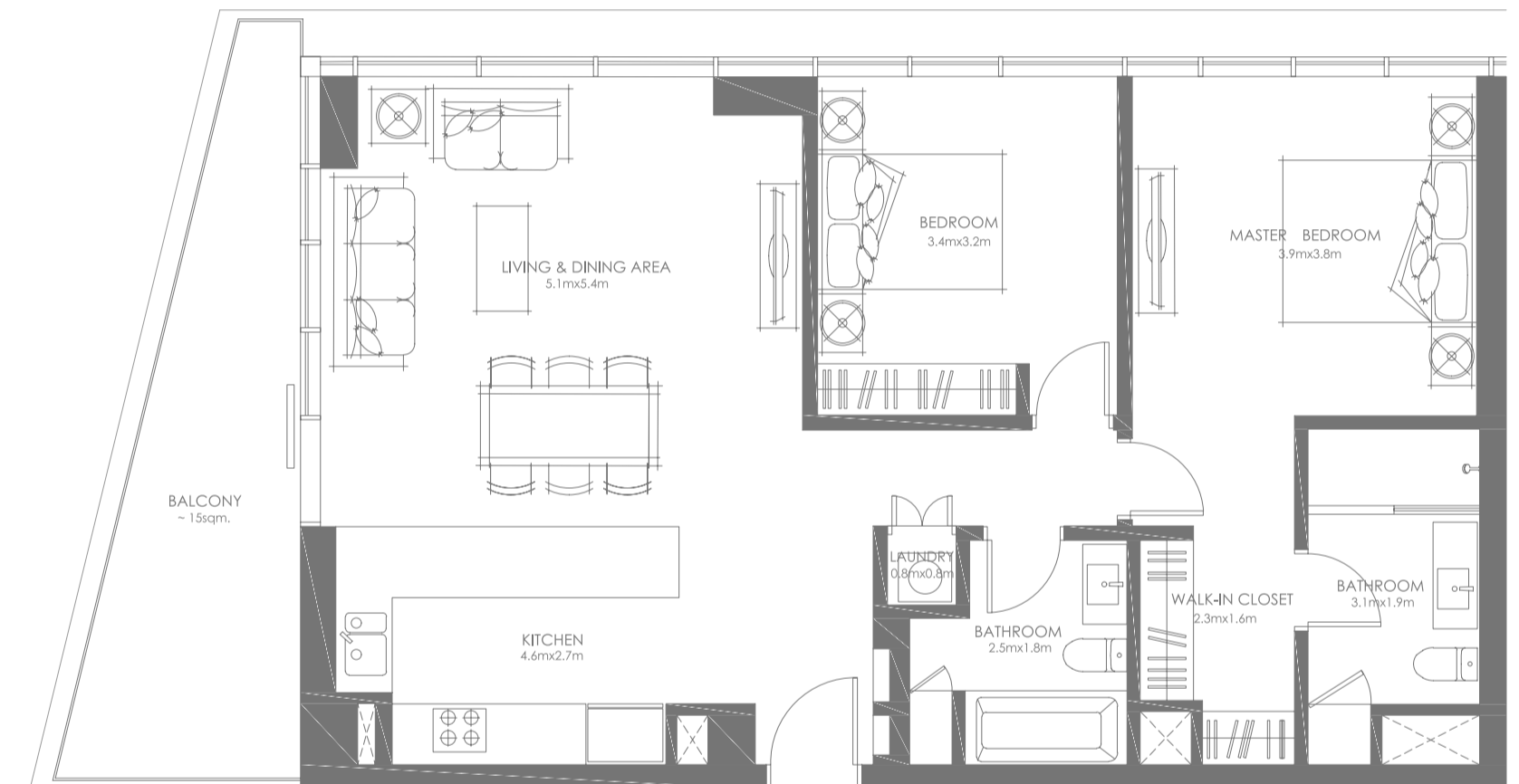
Disclaimer: This plan is reproduced for illustrative purposes as an example of a typical plot layout and Aldar makes no representation of warranty in relation to any of the information shown.

## 2 – BEDROOM — TYPE A



Disclaimer: This plan is reproduced for illustrative purposes as an example of a typical plot layout and Aldar makes no representation of warranty in relation to any of the information shown.

## 2 – BEDROOM — TYPE B



Disclaimer: This plan is reproduced for illustrative purposes as an example of a typical plot layout and Aldar makes no representation of warranty in relation to any of the information shown.

---

### **ALDAR SQUARE**

Next to Yas Mall, Abu Dhabi

**800 25327**

International: **+971 2 810 6400**  
sales@aldar.com

Working Hours

**Mon–Fri**

**8:00 AM–4:00 PM**

---

### **DUBAI SALES CENTRE**

Al Manara, Sheikh Zayed Road, Dubai

**800 25327**

International: **+971 2 810 6400**  
sales@aldar.com

Working Hours

**Mon–Fri**

**8:00 AM–4:00 PM**

---



ALDAR.COM  
800 ALDAR