



Crystal walk



MOUNTAIN VIEW

A PLACE WITH A
THOUSAND VIEWS

Crysta
 MOUNTAIN VIEW



Crysta

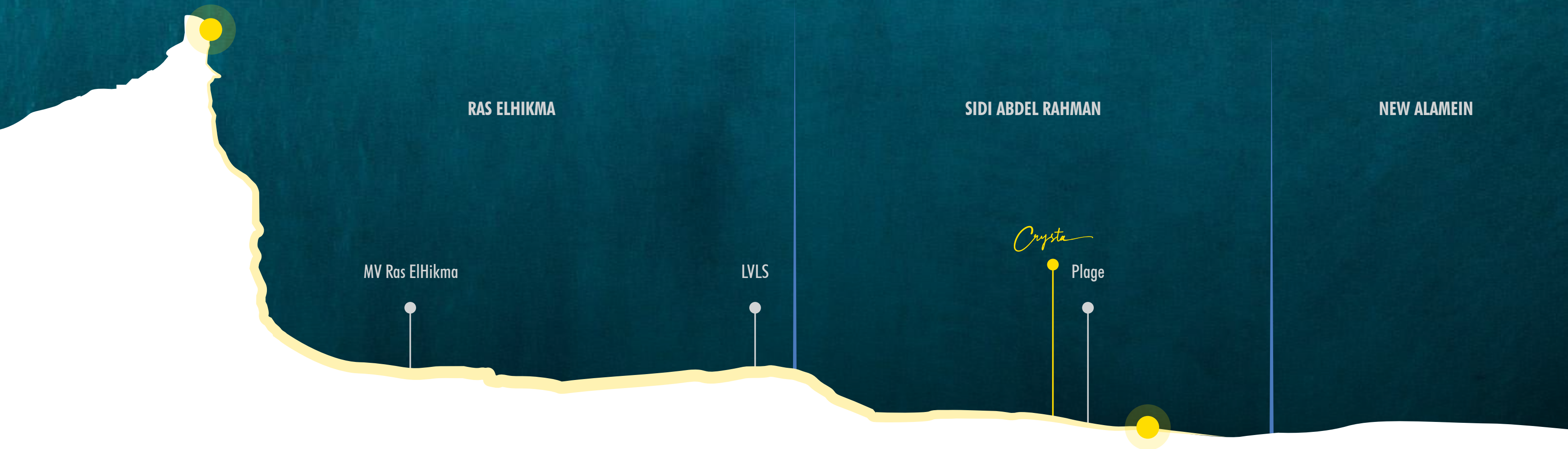
THE ARTERY OF
COASTAL LIVING

Crysta is a gated, all-villa community that offers a one-of-a-kind living experience, defined by its expansive water features and uninterrupted 360° horizon views. Here, the charm of coastal American architecture meets the tropical spirit of the islands, all covered in pastel tones more vivid than ever before.





STRATEGICALLY LOCATED ON THE GOLDEN COAST





Marassi

Plage

El Alamein
Airport

EL ALAMEIN

ALEXANDRIA - MATROUH
KILO 120

- 5 Mins from Marassi
- 30 Mins from EL Alamein Airport
- 35 Mins from LVLS
- 45 Mins from MV Ras El Hikma

Crysta

MOUNTAIN VIEW



MASTER PLAN

470_{fd}

Land Area

30+_{fd}

Swimmable Sandy Lagoons

90%

Waterfront villas

15+_{km}

Waterfront

100%

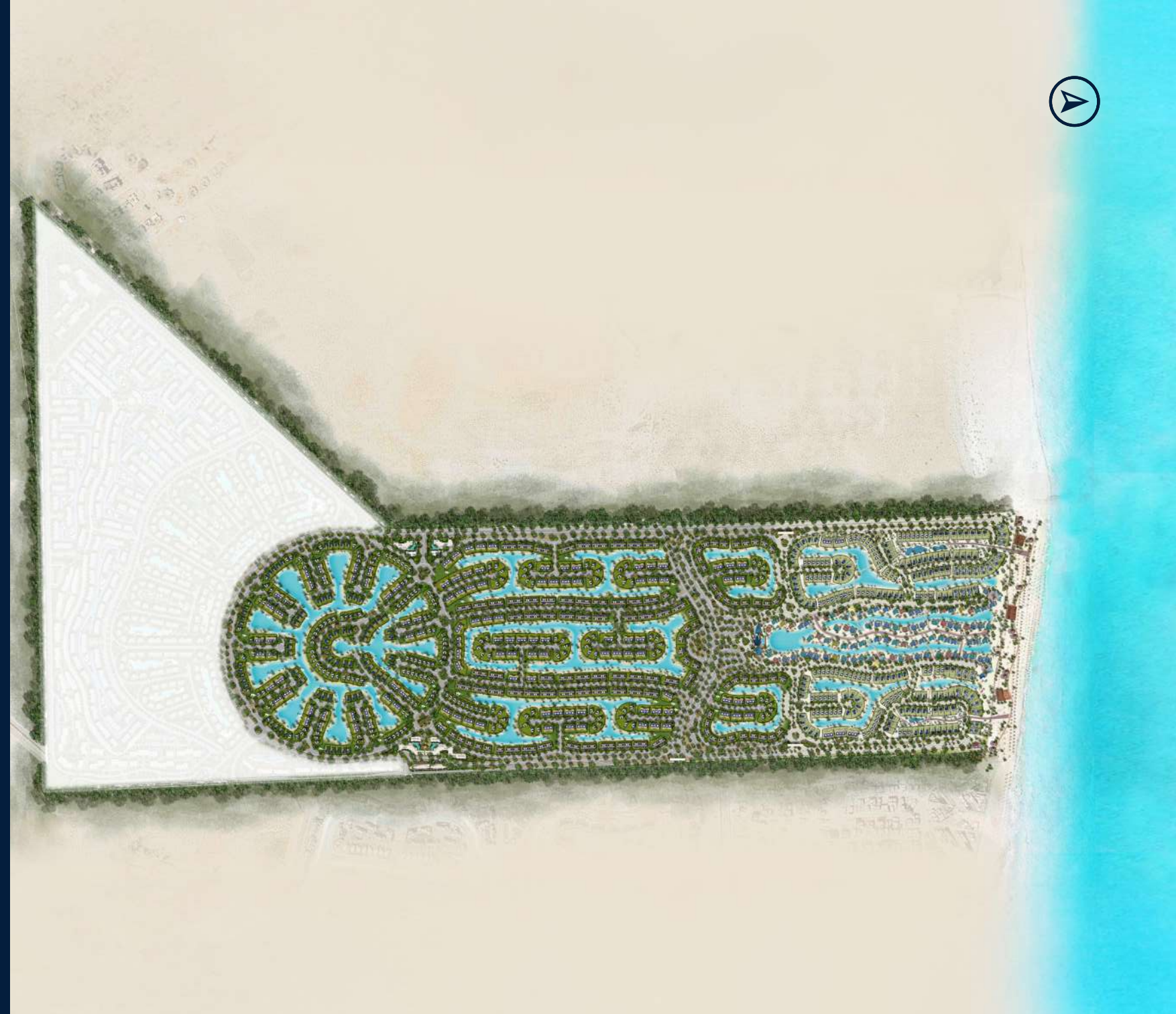
Single Family Units

3

Boutique Hotels

Exclusive

Beach Cabanas





Crysta walk



BAHAMAS-INSPIRED BEACH CHARM

An 85 feddan coastal masterpiece, this all-villa gated community overlooks a stunning beach bay and is brought to life inspired by the Bahamas pastel infused look and feel. At its heart lies the Crystal Walk — a serene, experiential promenade that connects the community through beauty, rhythm, and seaside calm.



SWIMMABLE
LAGOONS



BEACH
WALK



GATED BOUTIQUE
COMMUNITIES



BEACH FRONT
CABANAS



PRIVATE BEACH
EXPERIENCE



85 FEDDAN

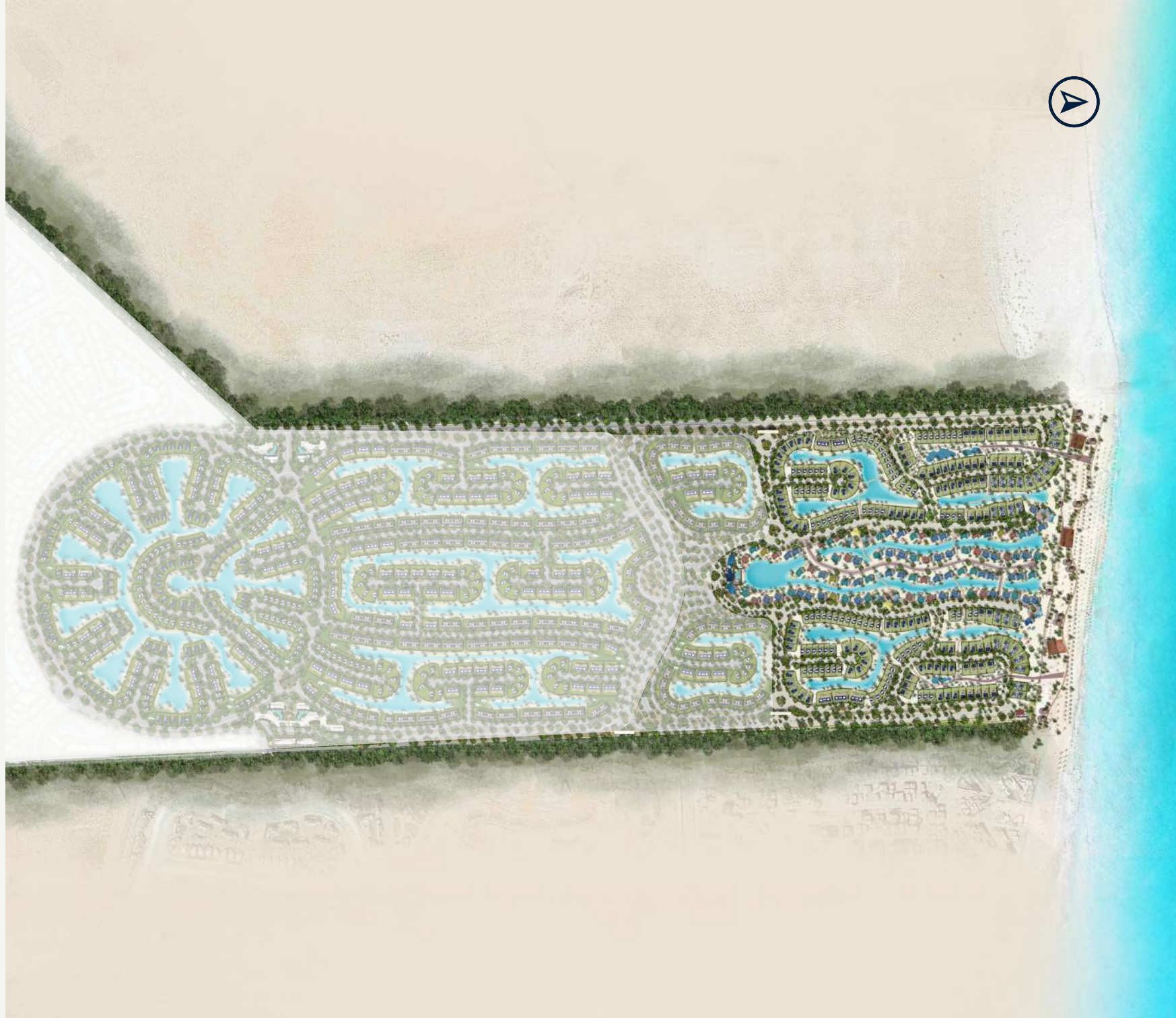


BOUTIQUE
HOTEL



Crysta
walk

MASTERPLAN





INFUSING COLORFUL TONES TO BEACH LIVING

Mountain View unveils a fresh perspective on living by introducing homes inspired by the timeless charm of Coastal American architecture—but with a spotless twist.

What sets them apart is a bold splash of pastel expression, bringing the entire community to life with a palette that radiates joy, beauty, and a sense of place.





THE SUNLIT PATH

Take delight as you walk to the beach and enjoy the view of the sandy spine that takes you to the azure magical waves with its vibrant commercial area, where you'll find an array of services and an unmistakable Caribbean feeling that completes your magical escape.



SHORELINE CABANAS

Choose from our exclusive seafront cabanas, each bathed in soft, sun-washed pastels that echo the tranquility of the shoreline. Thoughtfully designed to offer top-of-line living, these cabanas promise a laidback escape—where every detail is crafted to enrich your stay with a touch of coastal splendor.





BOUTIQUE HOTELS WARM HOSPITALITY

Continuing on the premium experience, our boutique hotel overlooks a vast water horizon and the beautiful bay, providing exceptional hospitality services and elevating the entire ambiance.



CRYSTA

The vibrant pulse of Sidi Abdelrahman. Here, mega-anchors meet charming boutique stores, and a diverse array of restaurants and cafés create a dynamic atmosphere brimming with delightful discoveries. This is more than convenience; it's a powerful, lively destination offering everything you could desire, solidifying its place as the unparalleled community hub.





FULLY FINISHED

READY TO EMBRACE YOUR
UNIQUE STYLE





crysta

UNIT
TYPES



ONE STOREY







ONE
STOREY

TOTAL GROSS AREA | 285 SQM
4 Bedrooms

Ground Floor | 235 sqm

Outdoor Areas | 40 sqm

Parking | 10 sqm

Roof Terrace | 180 sqm

Mountain view reserves the right to make minor alterations without prior notice. All numbers, renders, plans and visual materials, design, and facades are for demonstrative purposes and are subject to change



GROUND FLOOR



FIRST FLOOR





CRYSTA GRAND VILLA



CRYSTA GRAND VILLA

TOTAL GROSS AREA | 365 SQM
5 Bedrooms

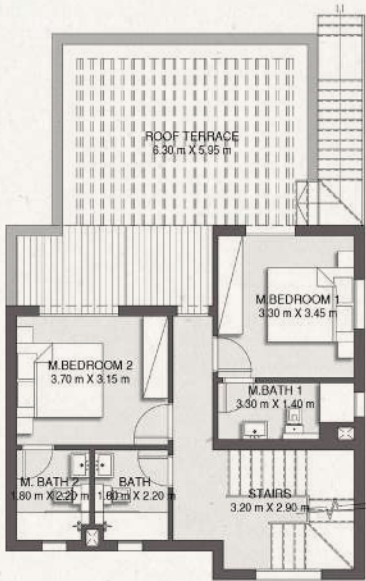
Ground Floor | 124 sqm
First Floor | 83 sqm
Roof Floor | 63 sqm

Terraces | 55 sqm
Outdoor Areas | 30 sqm
Parking | 10 sqm

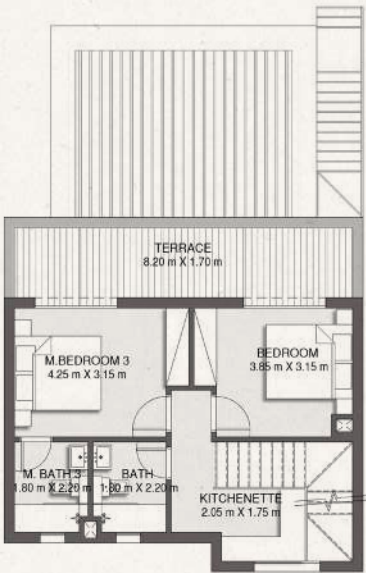
Mountain view reserves the right to make minor alterations without prior notice. All numbers, renders, plans and visual materials, design, and facades are for demonstrative purposes and are subject to change



GROUND FLOOR



FIRST FLOOR



ROOF FLOOR





VILLAS

CRYSTA & STANDALONE



CRYSTA VILLA (DOUBLE HEIGHT)

TOTAL GROSS AREA | 255 SQM
4 Bedrooms

Ground Floor | 122 sqm
First Floor | 68 sqm

Terrace | 25 sqm
Outdoor Areas | 30 sqm
Parking | 10 sqm

Mountain view reserves the right to make minor alterations without prior notice. All numbers, renders, plans and visual materials, design, and facades are for demonstrative purposes and are subject to change



GROUND FLOOR



ROOF FLOOR



STANDALONE VILLA

TOTAL GROSS AREA | 210 SQM
3 Bedrooms

Ground Floor | 93 sqm

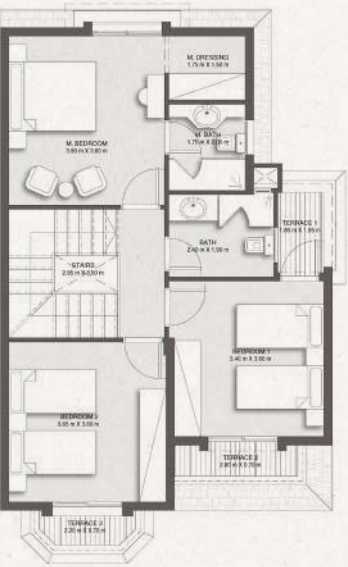
First Floor | 87 sqm

Outdoor Areas | 20 sqm

Parking | 10 sqm



GROUND FLOOR



FIRST FLOOR

Mountain view reserves the right to make minor alterations without prior notice. All numbers, renders, plans and visual materials, design, and facades are for demonstrative purposes and are subject to change





TOWN HOUSE



TOWNHOUSE CORNER

TOTAL GROSS AREA | 185 SQM
3 Bedrooms

Ground Floor | 103 sqm
First Floor | 82 sqm

Mountain view reserves the right to make minor alterations without prior notice. All numbers, renders, plans and visual materials, design, and facades are for demonstrative purposes and are subject to change



GROUND FLOOR



FIRST FLOOR

TOWNHOUSE MIDDLE

TOTAL GROSS AREA | 175 SQM
3 Bedrooms

Ground Floor | 69 sqm
First Floor | 63 sqm
Roof Floor | 43 sqm

Mountain view reserves the right to make minor alterations without prior notice. All numbers, renders, plans and visual materials, design, and facades are for demonstrative purposes and are subject to change



GROUND FLOOR



FIRST FLOOR



ROOF FLOOR



BEACH CABINS





BEACH CABINS CORNER

TOTAL GROSS AREA | 45 SQM

Mountain view reserves the right to make minor alterations without prior notice. All numbers, renders, plans and visual materials, design, and facades are for demonstrative purposes and are subject to change



GROUND UNIT



ROOF UNIT

BEACH CABINS MIDDLE

TOTAL GROSS AREA | 45 SQM

Mountain view reserves the right to make minor alterations without prior notice. All numbers, renders, plans and visual materials, design, and facades are for demonstrative purposes and are subject to change



GROUND UNIT



ROOF UNIT





SALES OFFICES

New Cairo, Building 183, Sector 2, 5th Settlement
Capital Business Park Building B4-3rd Floor, 6th of October city
Arkan Mall, 6th of October City Building No.6, 4th Floor.

16201
mountainviewegypt.com



Crysta

islands



MOUNTAIN VIEW

A PLACE WITH A
THOUSAND VIEWS

Crysta



MOUNTAIN VIEW



Crysta

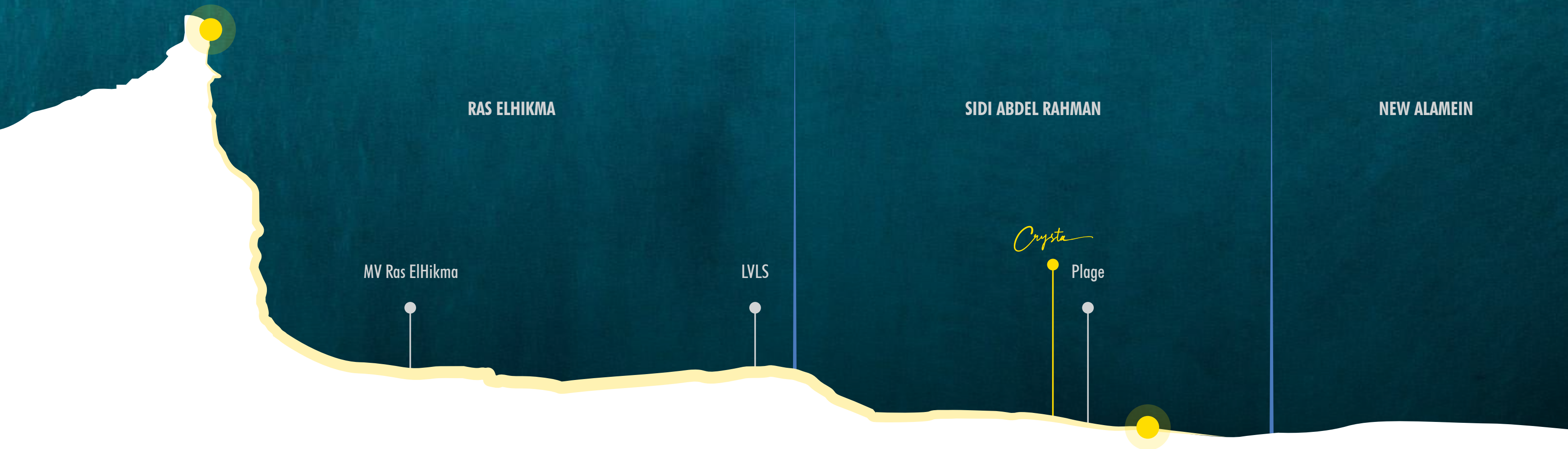
THE ARTERY OF
COASTAL LIVING

Crysta is a gated, all-villa community that offers a one-of-a-kind living experience, defined by its expansive water features and uninterrupted 360° horizon views. Here, the charm of coastal American architecture meets the tropical spirit of the islands, all covered in pastel tones more vivid than ever before.





STRATEGICALLY LOCATED ON THE GOLDEN COAST






Marassi


Plage


El Alamein
Airport

EL ALAMEIN

ALEXANDRIA - MATROUH
KILO 120

- 5 Mins from Marassi
- 30 Mins from EL Alamein Airport
- 35 Mins from LVLS
- 45 Mins from MV Ras El Hikma

Crysta
 MOUNTAIN VIEW



MASTERPLAN

470_{fd}

Land Area

30_{+fd}

Swimmable Sandy Lagoons

90%

Waterfront villas

15_{+km}

Waterfront

100%

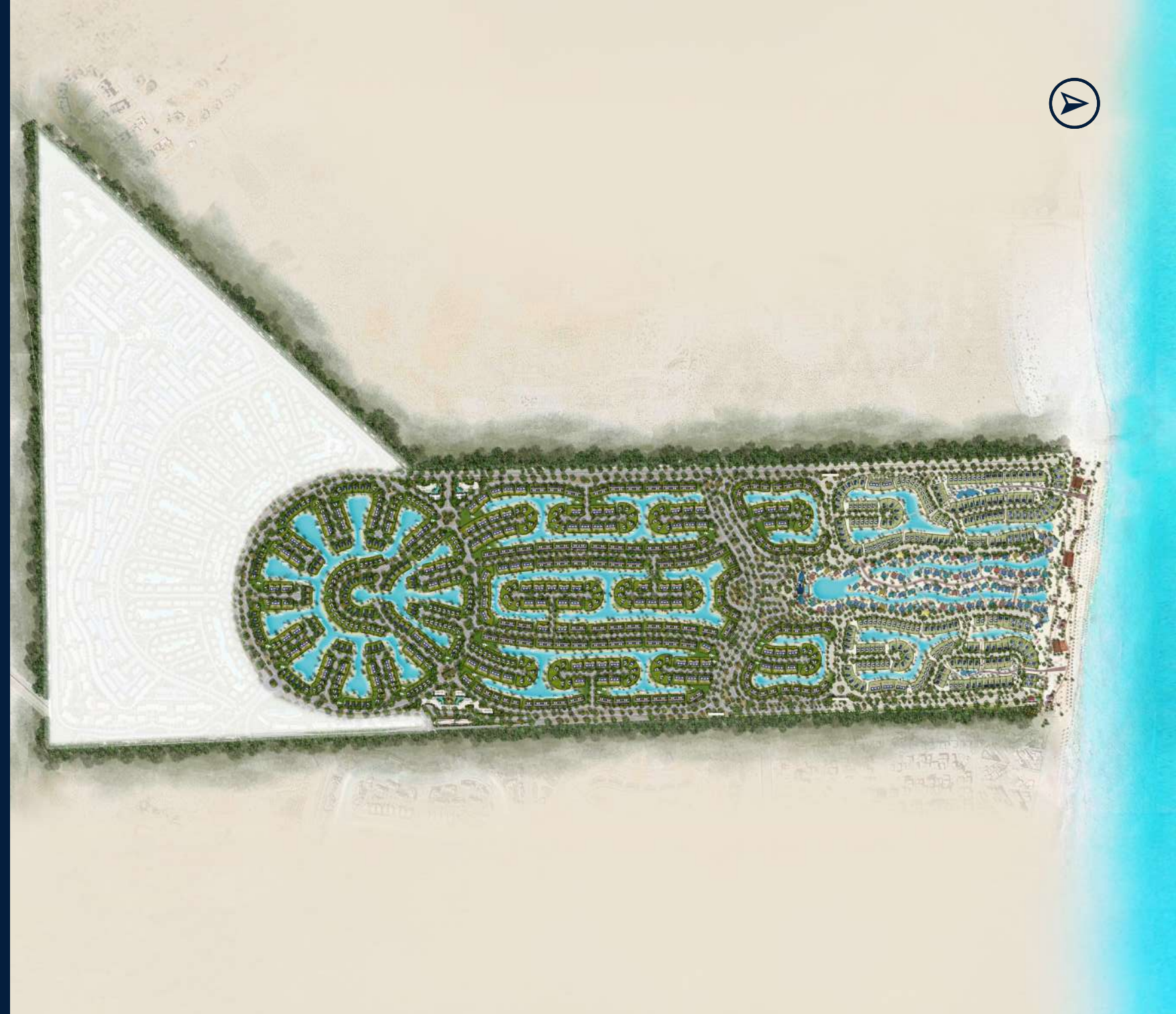
Single Family Units

3

Boutique Hotels

Exclusive

Beach Cabanas





Crysta

islands



THE BLUE ROOFS HEADED NORTH

For the first time on Egypt's North Coast, a new chapter of seaside living unfolds. Mountain View introduces the iconic charm of American coastal architecture—where breezy white facades meet the signature blue rooftops that echo the sea and sky. Spread across 215 feddans, this villa-only, gated sanctuary redefines exclusivity. Here, every home opens up to endless water views, with serene lagoons stretching just beyond your garden.



SWIMMABLE
LAGOONS



GATED BOUTIQUE
COMMUNITIES



PRIVATE BEACH
EXPERIENCE



BOUTIQUE
HOTEL



215
FEDDAN

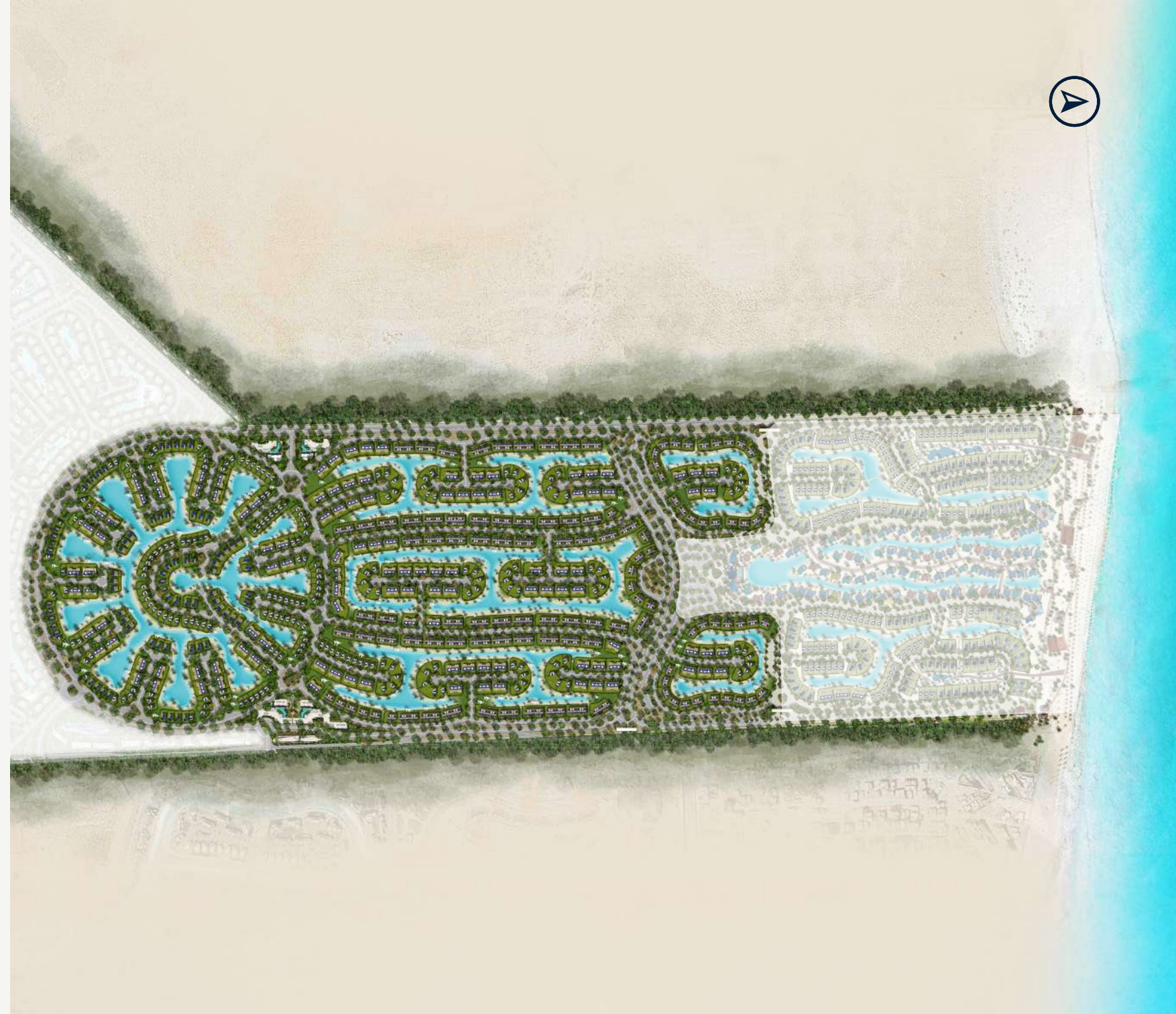


LAGOON FRONT
VILLAS



Crysta
islands

MASTERPLAN





THE AMERICAN COASTAL CHARM

A timeless style, re-imagined by the shore — Blue and White facades, and elegant details come to life against endless hues of blue. It's a place where warmth, heritage, and water intertwine to create a living experience filled with charm, calm, and coastal vibes.





CRYSTAL SANDY LAGOONS

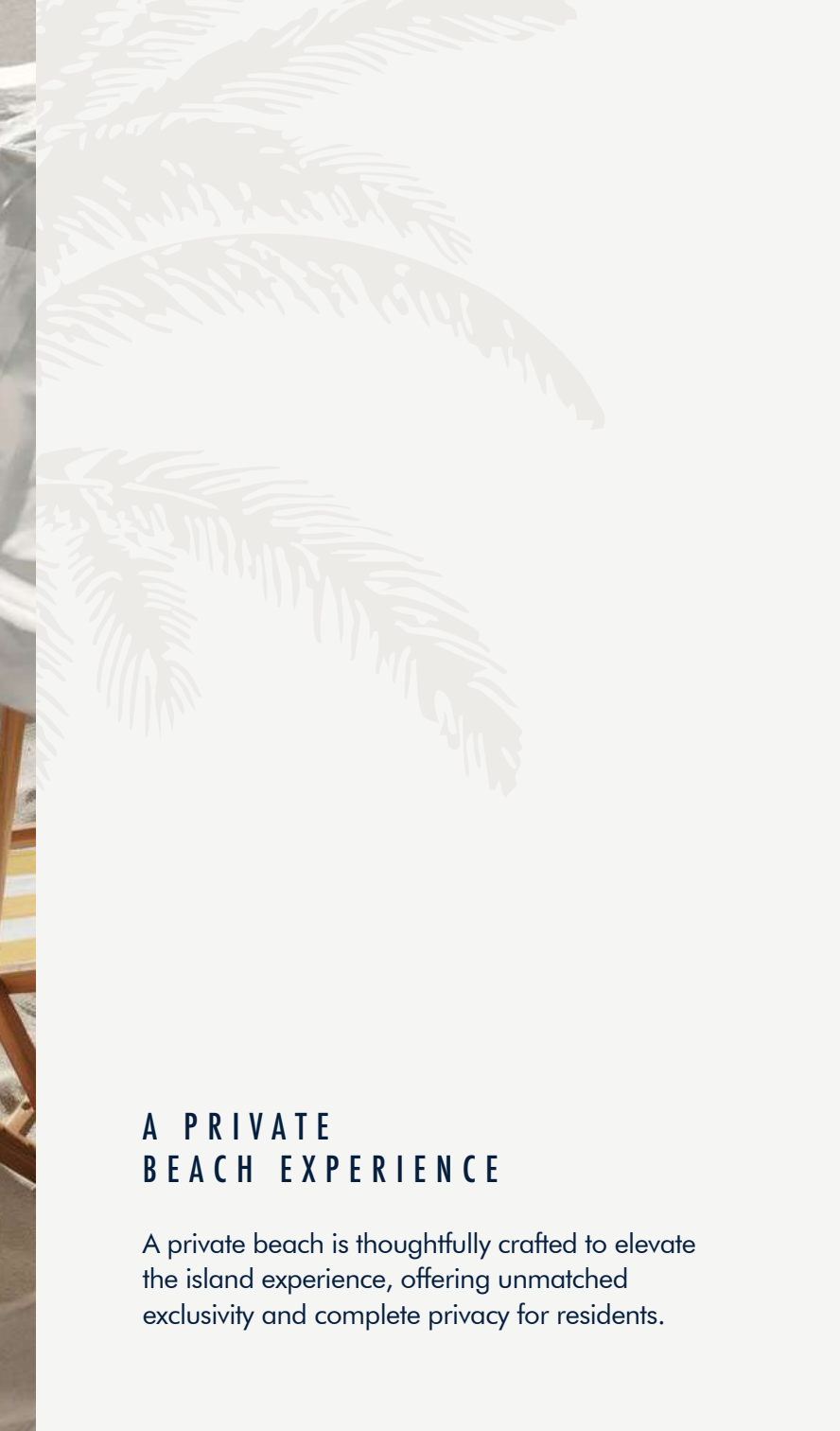
Every home is gifted its own exclusive lagoon, where you step straight from your terrace into pure serenity. These crystal waters are woven into the very fabric of the community, seamlessly blending with the perfect blue horizon.



THE PEARL

The Pearl is the heart of the community, home to its most exceptional units. Redefining premium island living, Mountain View invites you to immerse yourself in a world where breathtaking nature is not just a backdrop, but an integral part of your summer life.





A PRIVATE BEACH EXPERIENCE

A private beach is thoughtfully crafted to elevate the island experience, offering unmatched exclusivity and complete privacy for residents.



CRYSTA

TOWN

The vibrant pulse of Sidi Abdelrahman. Here, mega-anchors meet charming boutique stores, and a diverse array of restaurants and cafés create a dynamic atmosphere brimming with delightful discoveries. This is more than convenience; it's a powerful, lively destination offering everything you could desire, solidifying its place as the unparalleled community hub





FULLY FINISHED

READY TO EMBRACE YOUR
UNIQUE STYLE





crysta

UNIT
TYPES



CRYSTA GRAND VILLA



CRYSTA GRAND VILLA

TOTAL GROSS AREA | 365 SQM
5 Bedrooms

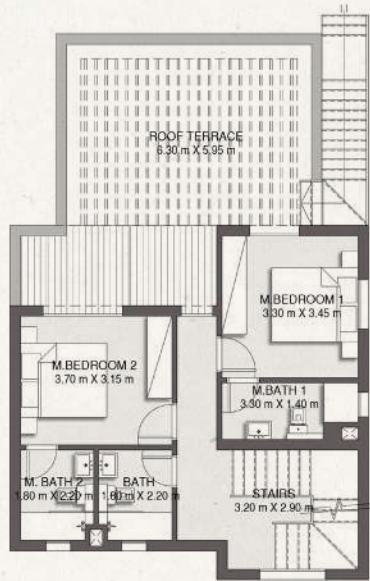
Ground Floor | 124 sqm
First Floor | 83 sqm
Roof Floor | 63 sqm

Terraces | 55 sqm
Outdoor Areas | 30 sqm
Parking | 10 sqm

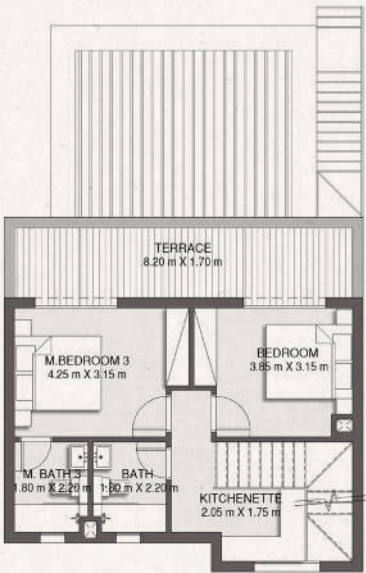
Mountain view reserves the right to make minor alterations without prior notice. All numbers, renders, plans and visual materials, design, and facades are for demonstrative purposes and are subject to change



GROUND FLOOR



FIRST FLOOR



ROOF FLOOR





VILLAS

CRYSTA & STANDALONE



CRYSTA VILLA (DOUBLE HEIGHT)

TOTAL GROSS AREA | 255 SQM
4 Bedrooms

Ground Floor | 122 sqm
First Floor | 68 sqm

Terrace | 25 sqm
Outdoor Areas | 30 sqm
Parking | 10 sqm

Mountain view reserves the right to make minor alterations without prior notice. All numbers, renders, plans and visual materials, design, and facades are for demonstrative purposes and are subject to change



GROUND FLOOR



ROOF FLOOR



STANDALONE VILLA

TOTAL GROSS AREA | 210 SQM
3 Bedrooms

Ground Floor | 93 sqm

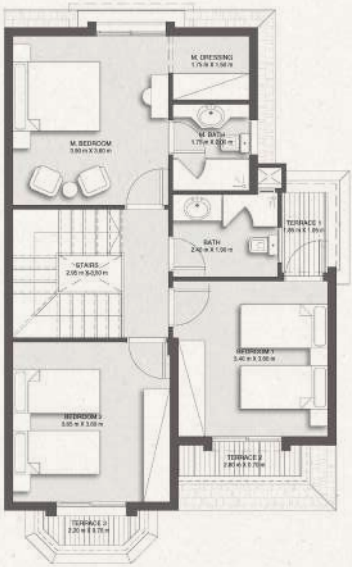
First Floor | 87 sqm

Outdoor Areas | 20 sqm

Parking | 10 sqm



GROUND FLOOR



FIRST FLOOR

Mountain view reserves the right to make minor alterations without prior notice. All numbers, renders, plans and visual materials, design, and facades are for demonstrative purposes and are subject to change





TOWN HOUSE



TOWNHOUSE CORNER

TOTAL GROSS AREA | 185 SQM
3 Bedrooms

Ground Floor | 103 sqm
First Floor | 82 sqm

Mountain view reserves the right to make minor alterations without prior notice. All numbers, renders, plans and visual materials, design, and facades are for demonstrative purposes and are subject to change



GROUND FLOOR



FIRST FLOOR



TOWNHOUSE MIDDLE

TOTAL GROSS AREA | 175 SQM
3 Bedrooms

Ground Floor | 69 sqm
First Floor | 63 sqm
Roof Floor | 43 sqm

Mountain view reserves the right to make minor alterations without prior notice. All numbers, renders, plans and visual materials, design, and facades are for demonstrative purposes and are subject to change



GROUND FLOOR



FIRST FLOOR



ROOF FLOOR



BEACH HOUSE



BEACH HOUSE GARDEN

TOTAL GROSS AREA | 150 SQM
3 Bedrooms

Ground Floor | 95 sqm

First Floor | 45 sqm

Utilities & Services | 10 sqm

Mountain view reserves the right to make minor alterations without prior notice. All numbers, renders, plans and visual materials, design, and facades are for demonstrative purposes and are subject to change



GROUND FLOOR



FIRST FLOOR



BEACH HOUSE ROOF

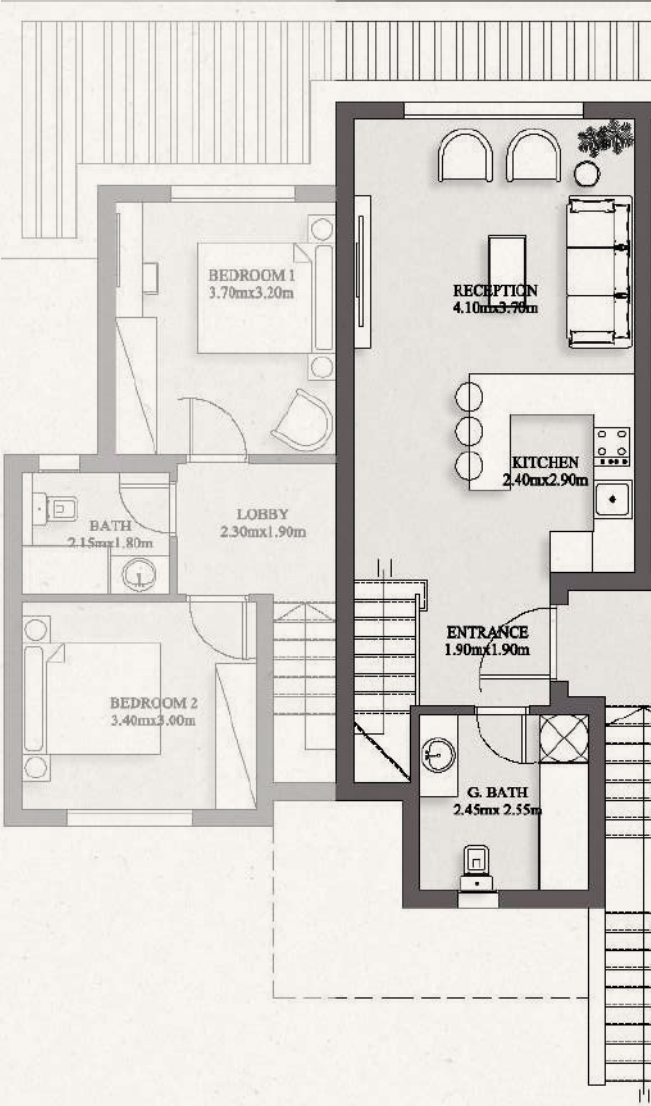
TOTAL GROSS AREA | 145 SQM
3 Bedrooms

Ground Floor | 95 sqm

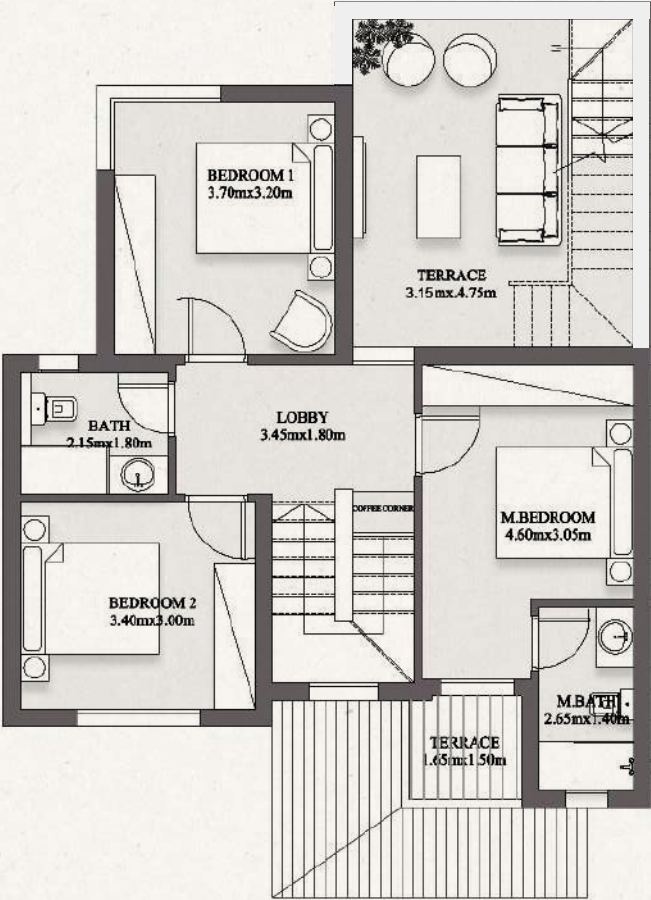
First Floor | 45 sqm

Utilities & Services | 05 sqm

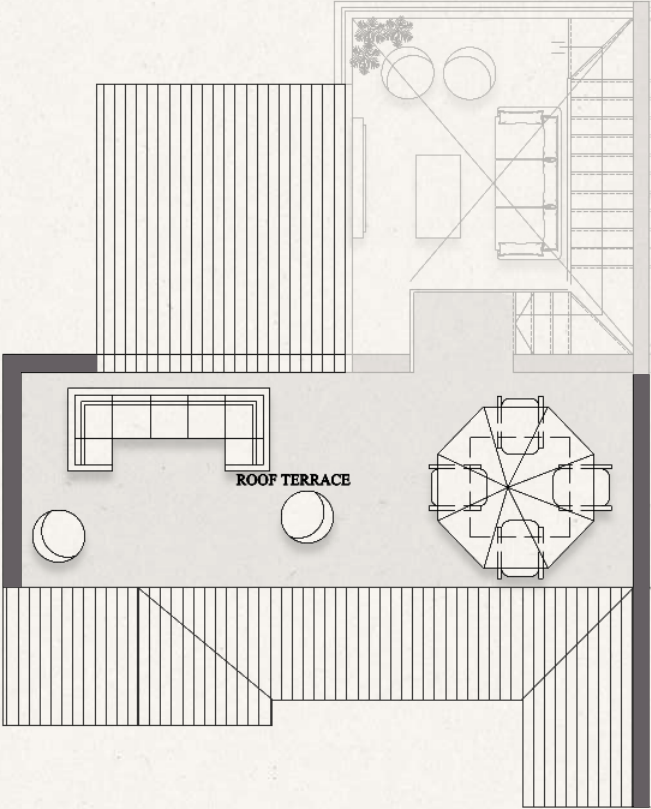
Mountain view reserves the right to make minor alterations without prior notice. All numbers, renders, plans and visual materials, design, and facades are for demonstrative purposes and are subject to change



LIVING FLOOR



BEDROOM FLOOR



ROOF





SALES OFFICES

New Cairo, Building 183, Sector 2, 5th Settlement
Capital Business Park Building B4-3rd Floor, 6th of October city
Arkan Mall, 6th of October City Building No.6, 4th Floor.

16201
mountainviewegypt.com