

# ORO

NEW CAPITAL





A GOLDEN NAME WITH A GOLDEN PROJECT



شركة أوليف تري للتطوير العقاري  
OLIVE TREE DEVELOPMENT




شركة الشمس للإسكان والتعمير  
Al-Shams Company for Housing and Urban Development



**AMG**<sup>AE</sup>  
AVA MINA GROUP  
CONSTRUCTION & REAL ESTATE DEVELOPMENT  
since 1994





AVA MINA GROUP is a real estate pioneer, established in 1994 by **Ashraf Awad, Ehab Awad, Nadia Habib.**

The company has built and constructed several commercial and residential towers in various areas across Egypt.





# AVA MINA GROUP

owns multiple companies and has its own imprint in several fields including :-

## Housing and contracting

The founders of **Ava Mina Group** founded :

### **Olive Tree Real Estate Development Company**

in 2020 with 400 million Egyptian pounds, and lately established a commercial-administrative-medical mall (**N Mall**) in the Downtown area of the new administrative capital.

### **B.F.B. Real Estate Development**

with 60 million pounds whereas B.F.B. has recently launched **ORO Obour City Compound**, a 27-acre tract of land in Zone VI in Obour city and established a luxurious residential settlement.

## Manufacturing Industry

**Kiromarble for Marble and Granite Factory** in Industrial Zone for Marble, Shak El Soaban, Torah.  
With Capital of 5 Million Egyptian pounds in 2004.

Kiromarble for Marble and Granite factory is one of the largest in the Middle East, 80% of the factory's production gets exported to 23 countries all over the world.

## Agriculture

**El Maleka & El Amir Farm** on 165 acres located in Cairo – Alexandria Desert Road for Olive Growing , Grapes of All Kinds , Olive oil production that is sold on the domestic market and exported abroad.

شركة أوليف تري للتطوير العقاري  
OLIVE TREE DEVELOPMENT





A WORD FROM  
**CHAIRMAN**

**ASHRAF AWAD**

"Our goal was to set out a clear vision for our future and develop our present.

Yesterday we started with one project, and Today we thankfully have a huge number of projects, based on solid foundations, that apply the latest management systems in managing the organizations."

A WORD FROM  
**VICE PRESIDENT / CEO**

**EHAB AWAD**

"The real estate development and construction sector is one of the most essential sectors to the country's economy, and it reflects our urban renaissance.

Today, **AVA MINA GROUP** continue to develop the base of leadership in the real estate sector; Planning an approach with sustainability and a foundation for development and success".

**"AVA MINA GROUP** is an endless success story"

شركة الشمس للإسكان والتعمير

Al-Shams Company for Housing and Urban Development





# AL-SHAMS COMPANY

The company was established during the royal era in 1946 under the name of the Egyptian Company for Modern Buildings (Al-Shams), which resulted in the merging of 4 long-standing companies:

- **The Immobilia Company**, which was led by Ismail Pasha Sedky, Prime Minister of Egypt at that time
- **The Egyptian Company** for Modern Buildings
- **The Egyptian Joint Stock Company** for Building Lands (Hadayek Al-Ahram), which was headed by Prince Abbas Halim

In 1961, the President of the Republic issued a decision for the company to become one of the public-sector companies therefore its name has been changed to become **Al Shams Housing and Development Company**. In 1976, the company was listed in the Cairo and Alexandria stock exchanges, and with the issuance of the Public Business Sector Law in 1991,

**Al-Shams Company** became a subsidiary of the public business sector, in its field of specialization. The company made great strides in ownership activity by establishing economic, middle, and luxurious housing in Cairo and Alexandria.

It also participated in the modernization of the new cities in the Sixth of October City and Al-Obour City to provide an affordable product that is compatible with the citizen's income and with different payment methods that help to own the appropriate housing to achieve security and stability with the appropriate return, for the company and investors.



# THE NEW CAPITAL

THE CITY OF TOMORROW





# NEW CAPITAL CITY

The New Capital is a cultural bridge that creates a political, economic, and cultural entity in the Middle East and North Africa to provide a prosperous economic environment and infrastructure that'll create sustainable development.

The New Capital is located on the border of Badr City in the region between Cairo Suez and Cairo Al-Ain Al Sokhna. Beside, New Cairo, Future city, and Madinaty. It is about 60 km from Al-Ain Al Sokhna and Suez Road -The Suez road is the main road leading to the new capital - as well as central Cairo.

# MAP & DIRECTION

Near to:

- Capital Airport
- The Presidential Palace
- The British University
- The Swedish University
- The Embassy District
- The Green River





## THE NEW ADMINISTRATIVE CAPITAL OF EGYPT



## R7 - THE MOST EXCLUSIVE RESIDENTIAL DISTRICT



Prime Location Directly Overlooking the Embassy District,  
Neighbouring the **Green River**





# ORO NEW CAPITAL

**ORO NEW CAPITAL** has a very distinct, geographical location in R7. It is located near the most influential and grand places in New Capital City, such as **The Capital Airport, The Presidential Palace, The British and Swedish University**, and directly overlooking **The Embassy District** and close to **The Green River**.

**ORO NEW CAPITAL** is built on an area of 38 acres that encompasses **luxury housing units of apartments and duplexes**, a recreational **services area, public facilities**, and **green spaces** that occupy a massive proportion of the total area of the project.

## ORO NEW CAPITAL SERVICES

ORO New Capital is characterized by a range of **entertainment services** that make it one of the residential projects that can be invested in easily and living in it, so the owner company was keen to provide more distinguished services, including :-

### -Club house:

- Gym
- Spa
- Swimming pools

### -Sports fields

### -Mosque

### -Integrated Commercial Mall

### -Integrated Administrative Units

### -Integrated Medical Center ( Labs & Pharmacies)

### -Parking

### - Security

### -Green Areas and Land scapes









A Golden name with  
a Golden project

# **MASTER PLAN**

## **-Club house:**

**-Gym**

**-Spa**

**-Swimming pools**

**-Sports fields**

**-Mosque**

**-Integrated Commercial Mall**

**-Integrated Administrative Units**

**-Integrated Medical Center ( Labs & Pharmacies)**

**-Parking**

**- Security**

**-Green Areas and Land scapes**













“Where all  
**the peacefulness**  
starts.”

# FACILITIES







“Untranded  
Delights”

BUILDING 1





“Sense  
The Serenity!”







“Free Your  
Grudges !”

















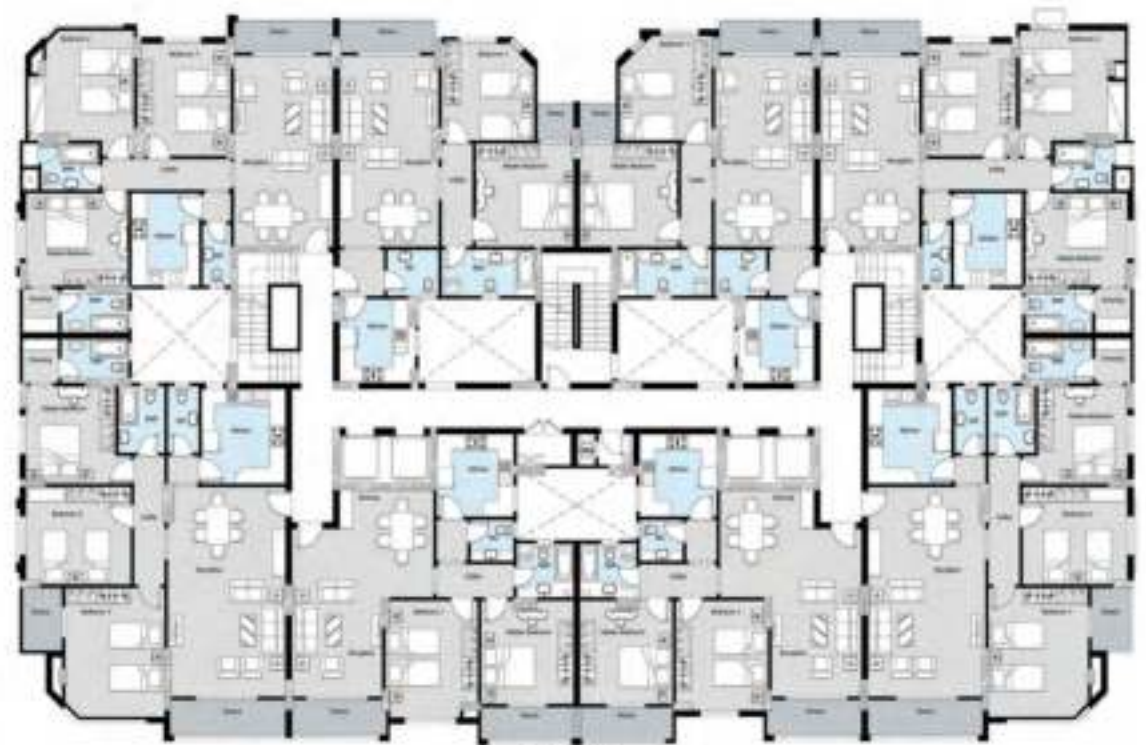
# TYPES



# TYPE A



TYPE A  
GROUND FLOOR



Type A  
Typical Floor



TYPE	(A)
APARTMENT	(A 01)
AREA	164 M <sup>2</sup>
3BEDROOMS	
GROUND FLOOR	



TYPE	(A)
APARTMENT	(A 02)
AREA	137 M <sup>2</sup>
2BEDROOMS	
GROUND FLOOR	





TYPE	(A)
APARTMENT	(A 03)
AREA	141 M <sup>2</sup>
2BEDROOMS	
GROUND FLOOR	



TYPE	(A)
APARTMENT	(A 04)
AREA	121 M <sup>2</sup>
2BEDROOMS	
GROUND FLOOR	



TYPE	(A)
APARTMENT	(B 01)
AREA	164 M <sup>2</sup>
3 BEDROOMS	
GROUND FLOOR	



TYPE	(A)
APARTMENT	(B 02)
AREA	137 M <sup>2</sup>
2 BEDROOMS	
GROUND FLOOR	



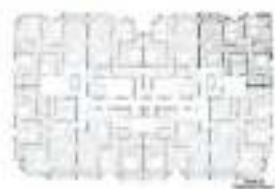


TYPE	(A)
APARTMENT	(B 03)
AREA	141 M <sup>2</sup>
2 BEDROOMS	
GROUND FLOOR	



TYPE	(A)
APARTMENT	(B 04)
AREA	121 M <sup>2</sup>
2 BEDROOMS	
GROUND FLOOR	





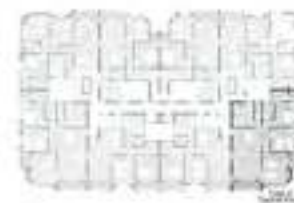
TYPE	(A)
APARTMENT	(A 11)
AREA	169 M <sup>2</sup>
3 BEDROOMS	
TYPICAL FLOOR	



TYPE	(A)
APARTMENT	(A 12)
AREA	138 M <sup>2</sup>
2 BEDROOMS	
TYPICAL FLOOR	



TYPE	(A)
APARTMENT	(A 13)
AREA	144 M <sup>2</sup>
2 BEDROOMS	
TYPICAL FLOOR	



TYPE	(A)
APARTMENT	(A 14)
AREA	196 M <sup>2</sup>
3 BEDROOMS	
TYPICAL FLOOR	





TYPE	(A)
APARTMENT	(B11)
AREA	169 M <sup>2</sup>
3 BEDROOMS	
TYPICAL FLOOR	



TYPE	(A)
APARTMENT	(B12)
AREA	138 M <sup>2</sup>
2 BEDROOMS	
TYPICAL FLOOR	



TYPE	(A)
APARTMENT	(B13)
AREA	144 M <sup>2</sup>
2 BEDROOMS	
TYPICAL FLOOR	



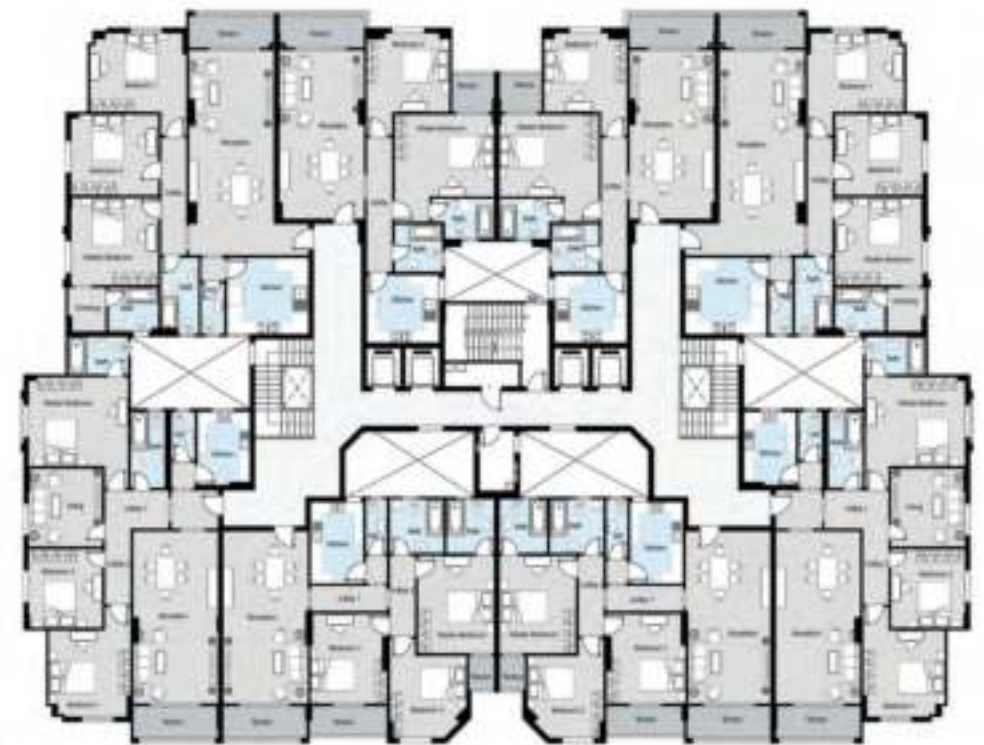
TYPE	(A)
APARTMENT	(B14)
AREA	196 M <sup>2</sup>
3 BEDROOMS	
TYPICAL FLOOR	



# TYPE B



Type B  
Ground Floor



Type B  
Typical Floor



TYPE B  
GROUND FLOOR



TYPE	(B)
APARTMENT	(A 01)
AREA	194 M <sup>2</sup>
3 BEDROOMS	
GROUND FLOOR	



TYPE B  
GROUND FLOOR



TYPE	(B)
APARTMENT	(A 02)
AREA	152 M <sup>2</sup>
2 BEDROOMS	
GROUND FLOOR	





TYPE	(B)
APARTMENT	(A 03)
AREA	129 M <sup>2</sup>
2 BEDROOMS	
GROUND FLOOR	



TYPE	(B)
APARTMENT	(A 04)
AREA	206 M <sup>2</sup>
4 BEDROOMS	
GROUND FLOOR	



TYPE B  
GROUND FLOOR



TYPE	(B)
APARTMENT	(B 01)
AREA	194 M <sup>2</sup>
3 BEDROOMS	
GROUND FLOOR	



TYPE B  
GROUND FLOOR



TYPE	(B)
APARTMENT	(B 02)
AREA	152 M <sup>2</sup>
2 BEDROOMS	
GROUND FLOOR	





Plan of the building



TYPE	(B)
APARTMENT	(B 03)
AREA	129 M <sup>2</sup>
2 BEDROOMS	
GROUND FLOOR	



Plan of the building



TYPE	(B)
APARTMENT	(B 04)
AREA	206M <sup>2</sup>
4BEDROOMS	
GROUND FLOOR	



TYPE B  
TYPICAL FLOOR



TYPE	(B)
APARTMENT	(A 11 )
AREA	205 M <sup>2</sup>
3 BEDROOMS	
TYPICAL FLOOR	



TYPE B  
TYPICAL FLOOR



TYPE	(B)
APARTMENT	(A 12 )
AREA	160 M <sup>2</sup>
2 BEDROOMS	
TYPICAL FLOOR	





TYPE	(B)
APARTMENT	(A 13 )
AREA	186 M <sup>2</sup>
3 BEDROOMS	
TYPICAL FLOOR	



TYPE	(B)
APARTMENT	(A 14 )
AREA	210 M <sup>2</sup>
4 BEDROOMS	
TYPICAL FLOOR	



TYPE	(B)
APARTMENT	(B 11 )
AREA	205 M <sup>2</sup>
3 BEDROOMS	
TYPICAL FLOOR	



TYPE	(B)
APARTMENT	(B 12 )
AREA	160 M <sup>2</sup>
2 BEDROOMS	
TYPICAL FLOOR	





TYPE B  
TYPICAL FLOOR



TYPE	(B)
APARTMENT	(B 13 )
AREA	186 M <sup>2</sup>
3 BEDROOMS	
TYPICAL FLOOR	



TYPE B  
TYPICAL FLOOR

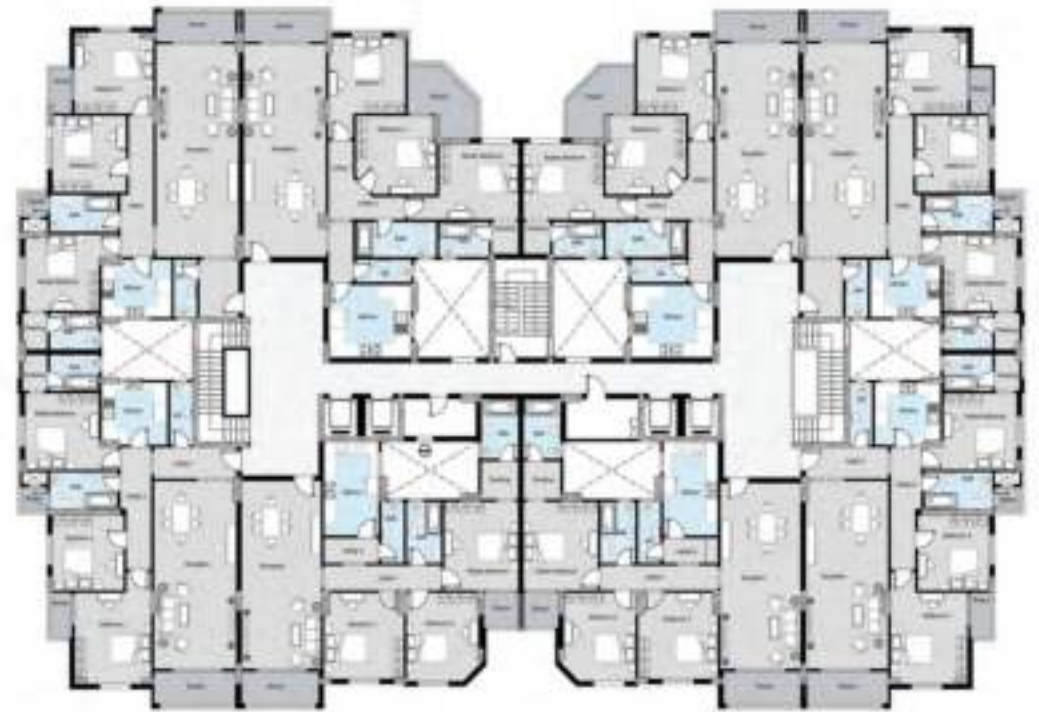


TYPE	(B)
APARTMENT	(B 14 )
AREA	210 M <sup>2</sup>
4 BEDROOMS	
TYPICAL FLOOR	

# TYPE C



Type C  
Ground Floor



Type C  
Typical Floor





TYPE	(C)
APARTMENT	(A 01)
AREA	189 M <sup>2</sup>
3 BEDROOMS	
GROUND FLOOR	



TYPE	(C)
APARTMENT	(A 02)
AREA	194 M <sup>2</sup>
3 BEDROOMS	
GROUND FLOOR	



TYPE	(C)
APARTMENT	(A 03)
AREA	136 M <sup>2</sup>
2BEDROOMS	
GROUND FLOOR	



TYPE	(C)
APARTMENT	(A 04)
AREA	189 M <sup>2</sup>
3 BEDROOMS	
GROUND FLOOR	





TYPE	(C)
APARTMENT	(B 01)
AREA	189 M <sup>2</sup>
3 BEDROOMS	
GROUND FLOOR	



TYPE	(C)
APARTMENT	(B 02)
AREA	194 M <sup>2</sup>
3 BEDROOMS	
GROUND FLOOR	



TYPE	(C)
APARTMENT	(B 03)
AREA	136 M <sup>2</sup>
2 BEDROOMS	
GROUND FLOOR	



TYPE	(C)
APARTMENT	(B 04)
AREA	189 M <sup>2</sup>
3 BEDROOMS	
GROUND FLOOR	





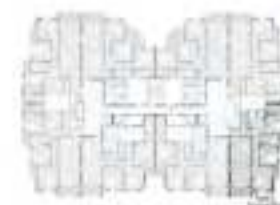
TYPE	(C)
APARTMENT	(A 11)
AREA	202 M <sup>2</sup>
3 BEDROOMS	
TYPICAL FLOOR	



TYPE	(C)
APARTMENT	(A 12)
AREA	210 M <sup>2</sup>
3 BEDROOMS	
TYPICAL FLOOR	

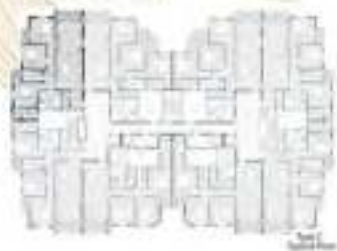


TYPE	(C)
APARTMENT	(A 13)
AREA	196 M <sup>2</sup>
3 BEDROOMS	
TYPICAL FLOOR	

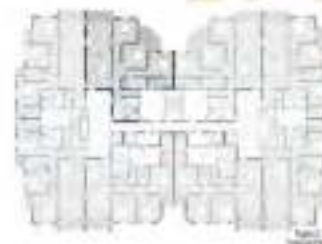


TYPE	(C)
APARTMENT	(A 14)
AREA	198 M <sup>2</sup>
3 BEDROOMS	
TYPICAL FLOOR	





TYPE	(C)
APARTMENT	(B 11 )
AREA	202 M <sup>2</sup>
3 BEDROOMS	
TYPICAL FLOOR	



TYPE	(C)
APARTMENT	(B 12)
AREA	210 M <sup>2</sup>
3 BEDROOMS	
TYPICAL FLOOR	



TYPE	(C)
APARTMENT	(B 13 )
AREA	196 M <sup>2</sup>
3 BEDROOMS	
TYPICAL FLOOR	



TYPE	(C)
APARTMENT	(B 14 )
AREA	198 M <sup>2</sup>
3 BEDROOMS	
TYPICAL FLOOR	



# TYPE D



Type D  
Ground Floor



Type D  
First Floor



Type D  
Typical Floor



TYPE	(D)
APARTMENT	(A 01)
AREA	204 M <sup>2</sup>
3BEDROOMS	
GROUND FLOOR	



TYPE	(D)
APARTMENT	(A 02)
AREA	140 M <sup>2</sup>
2 BEDROOMS	
GROUND FLOOR	





TYPE	(D)
APARTMENT	(A 03)
AREA	193 M <sup>2</sup>
3BEDROOMS	
GROUND FLOOR	



TYPE	(D)
APARTMENT	(A 04)
AREA	200 M <sup>2</sup>
3BEDROOMS	
GROUND FLOOR	



الأبعاد الموضحة تقريبية من محاور الموائج الداخلية والموائج الخارجية



الأبعاد الموضحة تقريبية من محاور الموائج الداخلية والموائج الخارجية

TYPE	(D)
APARTMENT	(A05)
AREA	400M <sup>2</sup>
GROUND FLOOR	
1 BEDROOM	
FIRST FLOOR	
3 BEDROOMS	





TYPE	(D)
APARTMENT	(B01)
AREA	204 M²
3BEDROOMS	
GROUND FLOOR	



TYPE	(D)
APARTMENT	(B02)
AREA	140 M²
2 BEDROOMS	
GROUND FLOOR	

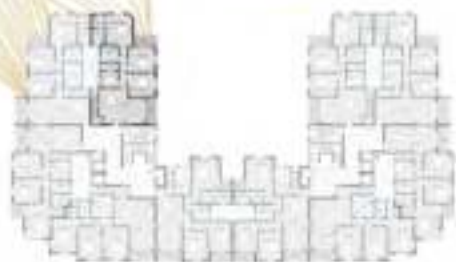


TYPE	(D)
APARTMENT	(B 03)
AREA	193 M <sup>2</sup>
3BEDROOMS	
GROUND FLOOR	



TYPE	(D)
APARTMENT	(B 04)
AREA	200 M <sup>2</sup>
3BEDROOMS	
GROUND FLOOR	





Unit B05  
Bed Room



الأبعاد الموضحة تقريبية من محاور الحوائط الداخلية والحوائط الخارجية



الأبعاد الموضحة تقريبية من محاور الحوائط الداخلية والحوائط الخارجية



Unit B05  
Bed Room

TYPE	(D)
APARTMENT	(B05)
AREA	400M <sup>2</sup>
GROUND FLOOR	
1 BEDROOM	
FIRST FLOOR	
3 BEDROOMS	



Unit location



Unit location

TYPE	(D)
APARTMENT	(A11)
AREA	216 M <sup>2</sup>
3 BEDROOMS	
FIRST FLOOR	



Unit location



Unit location

TYPE	(D)
APARTMENT	(A12)
AREA	205 M <sup>2</sup>
3 BEDROOMS	
FIRST FLOOR	

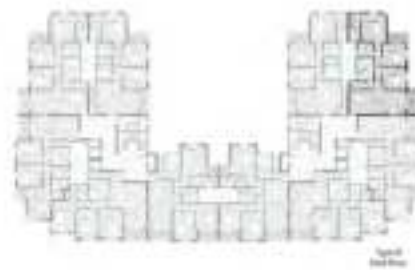




Site Plan



TYPE	(D)
APARTMENT	(A13)
AREA	190 M <sup>2</sup>
3 BEDROOMS	
FIRST FLOOR	



Site Plan



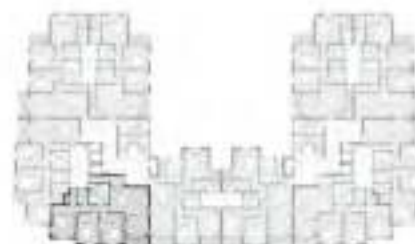
TYPE	(D)
APARTMENT	(A14)
AREA	205 M <sup>2</sup>
3 BEDROOMS	
FIRST FLOOR	



Small Site Plan



TYPE	(D)
APARTMENT	(B11)
AREA	216 M <sup>2</sup>
3 BEDROOMS	
FIRST FLOOR	



Small Site Plan



Small Site Plan

TYPE	(D)
APARTMENT	(B12)
AREA	205 M <sup>2</sup>
3 BEDROOMS	
FIRST FLOOR	

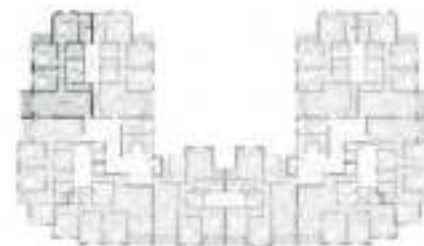




Site Plan



TYPE	(D)
APARTMENT	(B13)
AREA	190 M <sup>2</sup>
3 BEDROOMS	
FIRST FLOOR	



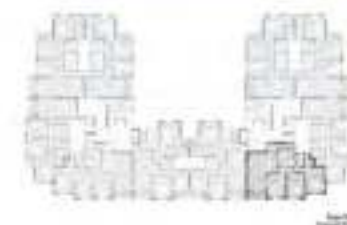
Site Plan



TYPE	(D)
APARTMENT	(B14)
AREA	205 M <sup>2</sup>
3 BEDROOMS	
FIRST FLOOR	



مساحة الأرضية الكلية 209 متر مربع

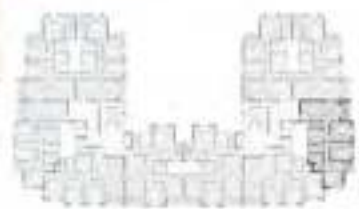


مساحة الأرضية الكلية 205 متر مربع

TYPE	(D)
APARTMENT	(A 21)
AREA	209 m <sup>2</sup>
3 BEDROOMS	
TYPICAL FLOOR	

TYPE	(D)
APARTMENT	(A 22)
AREA	205 m <sup>2</sup>
3 BEDROOMS	
TYPICAL FLOOR	





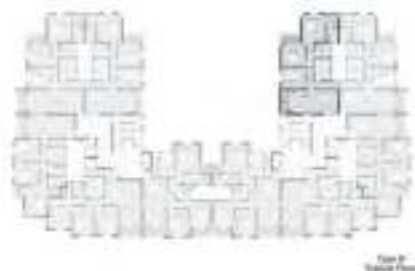
تصميم داخلي و تخطيط المساحة طبقاً للمواصفات المعمارية

TYPE	(D)
APARTMENT	(A 23)
AREA	190 m <sup>2</sup>
3 BEDROOMS	
TYPICAL FLOOR	



تصميم داخلي و تخطيط المساحة طبقاً للمواصفات المعمارية

TYPE	(D)
APARTMENT	(A 24)
AREA	205 m <sup>2</sup>
3 BEDROOMS	
TYPICAL FLOOR	



Typical Floor

TYPE	(D)
APARTMENT	(A 25)
AREA	202 m <sup>2</sup>
<b>3 BEDROOMS</b>	
<b>TYPICAL FLOOR</b>	



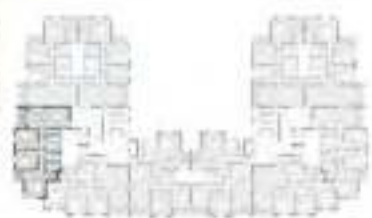




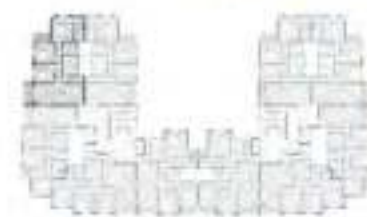
TYPE	(D)
APARTMENT	(B 21)
AREA	209 m <sup>2</sup>
3 BEDROOMS	
TYPICAL FLOOR	



TYPE	(D)
APARTMENT	(B 22)
AREA	205 m <sup>2</sup>
3 BEDROOMS	
TYPICAL FLOOR	

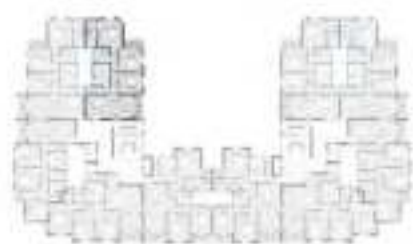


TYPE	(D)
APARTMENT	(B 23)
AREA	190 m <sup>2</sup>
3 BEDROOMS	
TYPICAL FLOOR	



TYPE	(D)
APARTMENT	(B 24)
AREA	205 m <sup>2</sup>
3 BEDROOMS	
TYPICAL FLOOR	





View of Typical Floor

TYPE	(D)
APARTMENT	(B 25)
AREA	202 m <sup>2</sup>
<b>3 BEDROOMS</b>	
<b>TYPICAL FLOOR</b>	



المساحة الكلية للمبنى ١٠٠٠٠ م<sup>٢</sup> ومساحة الأرض ١٠٠٠٠ م<sup>٢</sup> ومساحة المساحات الخارجية ١٠٠٠ م<sup>٢</sup>

# TYPE E



Type E  
Ground Floor

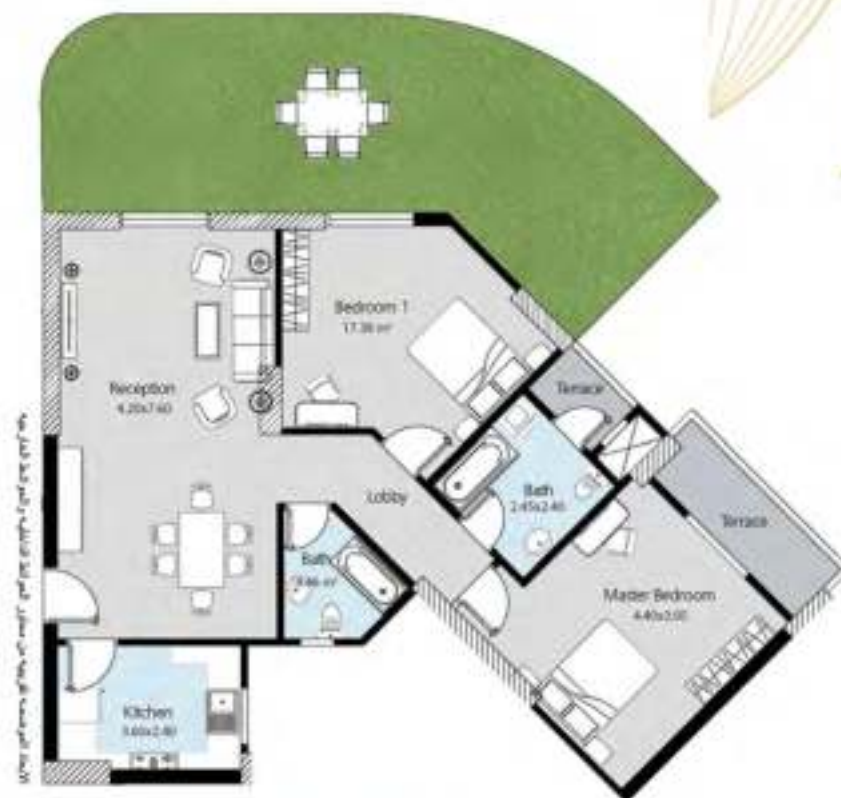


Type E  
Typical Floor





TYPE	(E)
APARTMENT	(01)
AREA	196 m²
3 BEDROOMS	
GROUND FLOOR	



TYPE	(E)
APARTMENT	(02)
AREA	134 m²
2 BEDROOMS	
GROUND FLOOR	



TYPE	(E)
APARTMENT	(04)
AREA	196 m <sup>2</sup>
3 BEDROOMS	
GROUND FLOOR	





Unit 11



TYPE	(E)
APARTMENT	(11)
AREA	200 m <sup>2</sup>
3 BEDROOMS	
TYPICAL FLOOR	



Unit 12



TYPE	(E)
APARTMENT	(12)
AREA	208 m <sup>2</sup>
3 BEDROOMS	
TYPICAL FLOOR	



13



البيوت المصممة لتكون من سكنة المودة والتعاون والتواضع

TYPE	(E)
APARTMENT	(13)
AREA	213 m <sup>2</sup>
3 BEDROOMS	
TYPICAL FLOOR	



14

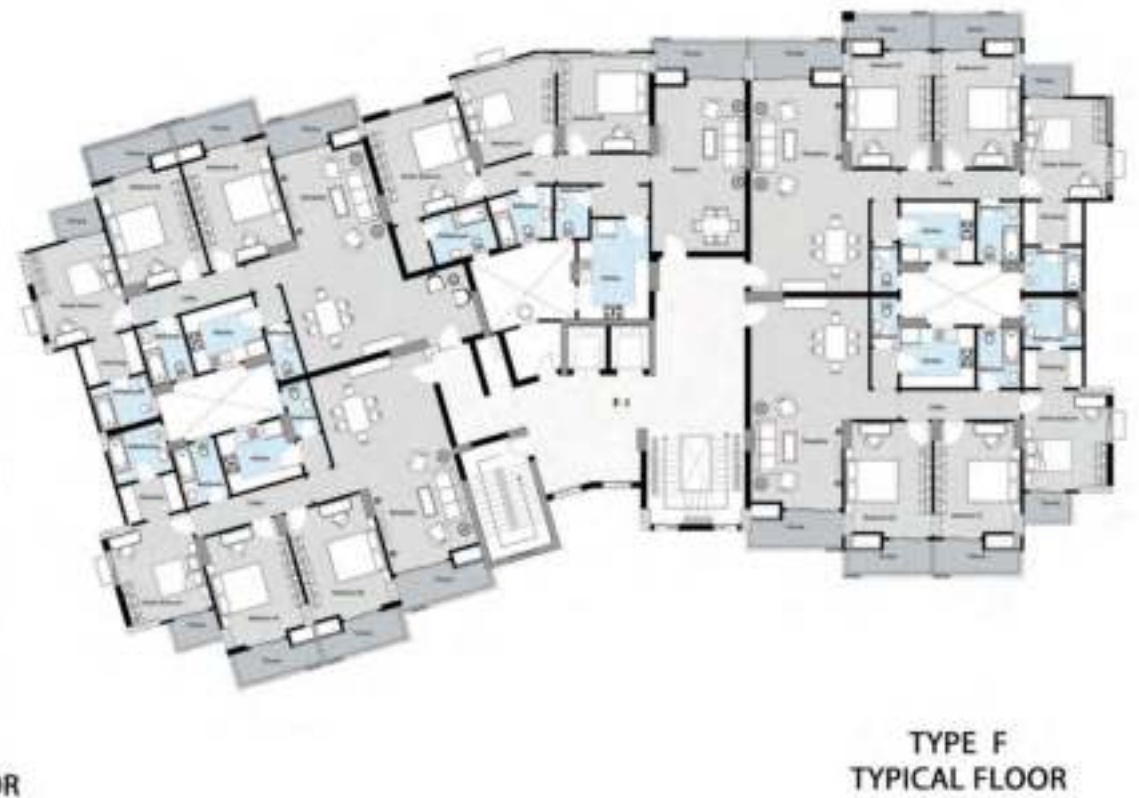


البيوت المصممة لتكون من سكنة المودة والتعاون والتواضع

TYPE	(E)
APARTMENT	(14)
AREA	200 m <sup>2</sup>
3 BEDROOMS	
TYPICAL FLOOR	



# TYPE F





TYPE	(F)
APARTMENT	(01)
AREA	198 M <sup>2</sup>
3 BEDROOMS	
GROUND FLOOR	



TYPE	(F)
APARTMENT	(02)
AREA	200 M <sup>2</sup>
3 BEDROOMS	
GROUND FLOOR	





TYPE	(F)
APARTMENT	(03)
AREA	132 M <sup>2</sup>
2 BEDROOMS	
GROUND FLOOR	



TYPE	(F)
APARTMENT	(04)
AREA	206 M <sup>2</sup>
3 BEDROOMS	
GROUND FLOOR	



TYPE	(F)
APARTMENT	(05)
AREA	198 M <sup>2</sup>
3 BEDROOMS	
GROUND FLOOR	





TYPE 1  
TYPICAL FLOOR



TYPE	(F)
APARTMENT	(11)
AREA	207 M <sup>2</sup>
3 BEDROOMS	
TYPICAL FLOOR	



TYPE 2  
TYPICAL FLOOR



TYPE	(F)
APARTMENT	(12)
AREA	205 M <sup>2</sup>
3 BEDROOMS	
TYPICAL FLOOR	



TYPE	(F)
APARTMENT	(13)
AREA	185 M <sup>2</sup>
3 BEDROOMS	
TYPICAL FLOOR	



TYPE	(F)
APARTMENT	(14)
AREA	218 M <sup>2</sup>
3 BEDROOMS	
TYPICAL FLOOR	





Fig. 2  
TYPICAL FLOOR



البيانات التقديرية المقترحة من قبل المصمم المعماري والمهندسين المعماريين

TYPE	(F)
APARTMENT	(15)
AREA	207 M <sup>2</sup>
3 BEDROOMS	
TYPICAL FLOOR	

# TYPE G



TYPE G  
GROUND FLOOR



TYPE G  
TYPICAL FLOOR





TYPE	(G)
APARTMENT	(01)
AREA	198 M <sup>2</sup>
3 BEDROOMS	
GROUND FLOOR	



TYPE	(G)
APARTMENT	(02)
AREA	201 M <sup>2</sup>
3 BEDROOMS	
GROUND FLOOR	



TYPE	(G)
APARTMENT	(03)
AREA	188 M <sup>2</sup>
3 BEDROOMS	
GROUND FLOOR	



TYPE	(G)
APARTMENT	(04)
AREA	144 M <sup>2</sup>
2 BEDROOMS	
GROUND FLOOR	





05/05 الوحدة رقم 05 من طابق المصالحات العامة والحدائق الخارجية

TYPE	(G)
APARTMENT	(05)
AREA	207 M <sup>2</sup>
3 BEDROOMS	
GROUND FLOOR	



TYPE 11  
TYPICAL FLOOR



TYPE 12  
TYPICAL FLOOR



TYPE	(G)
APARTMENT	(11)
AREA	203 M <sup>2</sup>
3 BEDROOMS	
TYPICAL FLOOR	



TYPE	(G)
APARTMENT	(12)
AREA	209 M <sup>2</sup>
3 BEDROOMS	
TYPICAL FLOOR	





FIGURE 13  
TYPICAL FLOOR



TYPE	(G)
APARTMENT	(13)
AREA	194 M <sup>2</sup>
3 BEDROOMS	
TYPICAL FLOOR	



FIGURE 14  
TYPICAL FLOOR



TYPE	(G)
APARTMENT	(14)
AREA	206 M <sup>2</sup>
3 BEDROOMS	
TYPICAL FLOOR	



TYPE G  
TYPICAL FLOOR



البيوت المصممة من قبل المهندس المعماري الدكتور محمد عبد الحليم

TYPE	(G)
APARTMENT	(15)
AREA	217 M <sup>2</sup>
3 BEDROOMS	
TYPICAL FLOOR	



# NOTES



AVA MINA GROUP

CONSTRUCTION & REAL ESTATE DEVELOPMENT

A GOLDEN NAME WITH A GOLDEN PROJECT





شركة أوليف تري للتطوير العقاري  
OLIVE TREE DEVELOPMENT



شركة الشمس للإسكان والتعمير  
Al-Shams Company for Housing and Urban Development



**AMG**  
AVA MINA GROUP  
CONSTRUCTION & REAL ESTATE DEVELOPMENT

## OUR BRANCHES

### Sheraton Branch(Head Office)

16 Mostafa Refaat, Sheraton  
Al Matar, El Nozha  
Cairo, Egypt .

Tel: 0222697538 - 0222697537 - 0222697530

### Misr El-Gadeda Branch

15 El Orouba St.,  
El-Montaza, Heliopolis, Near Baron  
Empain Palace

Tel: 0224150668 - 0224150667

### Zaytoun Branch

34 Nasouh St.,  
El-Zaytoun, Cairo, Egypt .

Tel: 0224521805

[www.avaminagroup.com](http://www.avaminagroup.com)

HOTLINE: **16851**

