



# PLUMERIA

SPRINGS

JANABIYAH | BAHRAIN

HOMES FOR LIFE SINCE 2011

For over 14 years, we've been redefining living standards in Bahrain. From the first conversation to the finishing touches, we work closely with clients to craft homes that feels just right - places where space, light, and form come together to create a sense of calm and connection.

Plumeria Springs is an exclusive gated community of 10 homes. Crafted with 4, 5, or 6-bedroom layouts, each home blends flowing curves with refined finishes. Crafted to the highest standards, the interiors feature natural hardwoods, limestone, and mosaic marble, creating a space that feels both timeless and sophisticated.

A Plumeria home isn't defined by its walls, but by the warmth it carries — the quiet comfort of belonging, the ease of being yourself.

EXTERNAL VIEW



EXTERNAL VIEW



EXTERNAL VIEW



# LOCATION

Nestled in the heart of Janabiyah, one of Bahrain's most desirable neighborhoods, Plumeria Springs offers an unmatched lifestyle in a prime location.

JANABIYAH | BAHRAIN

## AMENITIES

Enjoy close proximity to Bahrain's top shopping hubs like Liwan and District I, as well as leading international schools such as St. Christopher's and the British School of Bahrain.

Just 4 km from the Saudi Causeway, it's the ideal choice for commuters or those with a secondary residence in Saudi Arabia.



# SPECIFICATION

Every detail of Plumeria Springs has been carefully considered, with materials and spaces thoughtfully balanced—designed for those who value harmony, beauty, and refined living.

## SPECIFICATION

## PROPERTY SIZE

Set on 800 sqm plots with built-up areas of 835 and 900 sqm, these villas combine modern elegance with spacious design.



## SPECIFICATION



## MATERIALS AND FINISHES

The highest global benchmarks in finishing ensure that every detail exudes sophistication, from natural hardwoods and limestone to exquisite mosaic marble.

# VISUALS

The visuals shown are a true reflection of what we deliver.

We work hand-in-hand with leading interior designers, architects, and landscape specialists to craft spaces that are not only beautifully designed but thoughtfully executed.

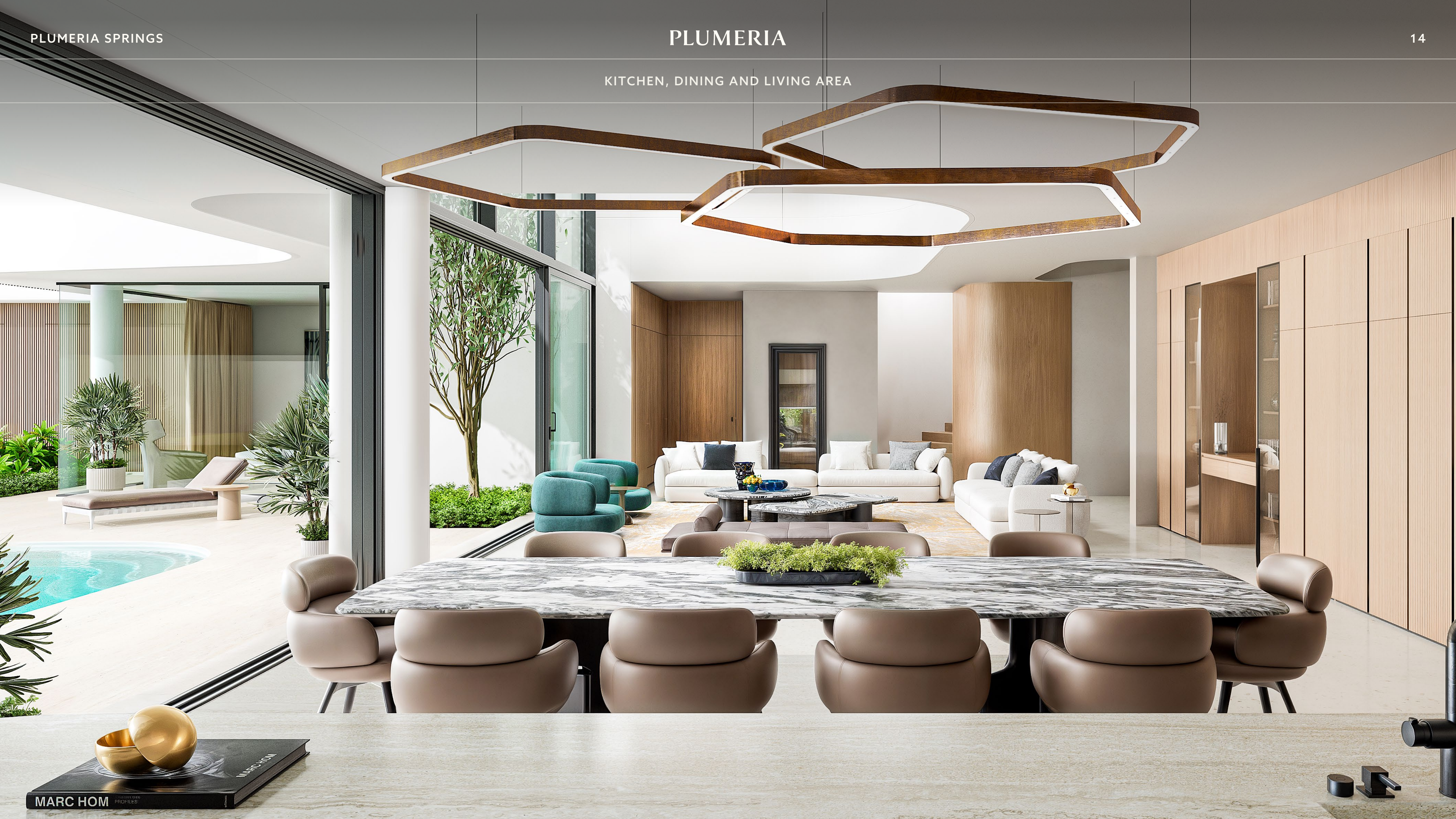
ENTRY FOYER



DOUBLE-HEIGHT LIVING ROOM



KITCHEN, DINING AND LIVING AREA



HOME OFFICE



GUEST BEDROOM



FIRST FLOOR SPACES



QUEEN BEDROOM





MASTER BEDROOM



MASTER BATHROOM



BIOPHILIC DESIGN TOUCHES IN THE MASTER BATHROOM



## MASTER WARDROBE

DESIGN A WARDROBE THAT FITS YOUR LIFE.

Crafted to your exact needs, our bespoke wardrobes stand 2.7 meters tall and feature premium air hinges for smooth, silent closing. Built for beauty, tailored for function — completely yours.



FAMILY ROOM



SKY LOUNGE AND TERRACE



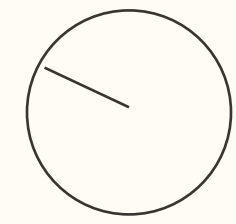
# PLANS

Every detail of Plumeria Springs has been meticulously planned, with spaces thoughtfully balanced to create a sense of harmony and flow—crafted for those who appreciate beauty, serenity, and refined living.

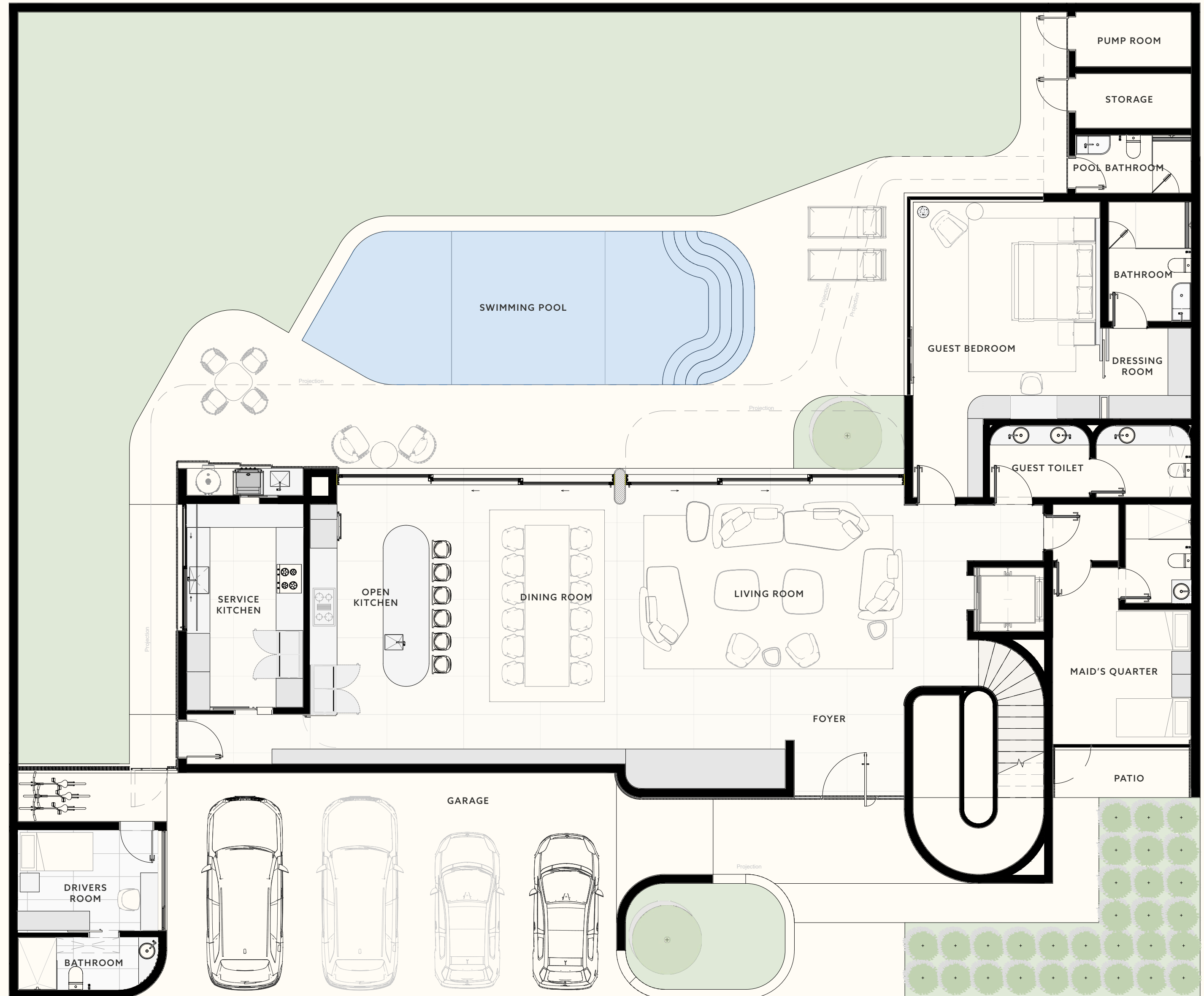
PLANS

# GROUND FLOOR

BUILT-UP  
448 M<sup>2</sup>

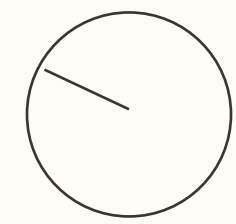


INSIDE	AREA
FOYER	8.0 m <sup>2</sup>
OPEN LIVING AREA	63.2 m <sup>2</sup>
OPEN KITCHEN	33.5 m <sup>2</sup>
SERVICE KITCHEN	16.0 m <sup>2</sup>
LARGE DINING ROOM	33.4 m <sup>2</sup>
MAID'S QUARTER	22.5 m <sup>2</sup>
GUEST BEDROOM	36.7 m <sup>2</sup>
GUEST BATHROOM	6.6 m <sup>2</sup>
OUTSIDE	AREA
SWIMMING POOL	42.0 m <sup>2</sup>
COVERED TERRACE	60.0 m <sup>2</sup>
POOL BATHROOM	4.5 m <sup>2</sup>
STORAGE	4.2 m <sup>2</sup>
PUMP ROOM	4.2 m <sup>2</sup>
GARDEN	200.0 m <sup>2</sup>
GARAGE	75.5 m <sup>2</sup>
DRIVERS ROOM	9.8 m <sup>2</sup>
DRIVERS BATHROOM	4.7 m <sup>2</sup>



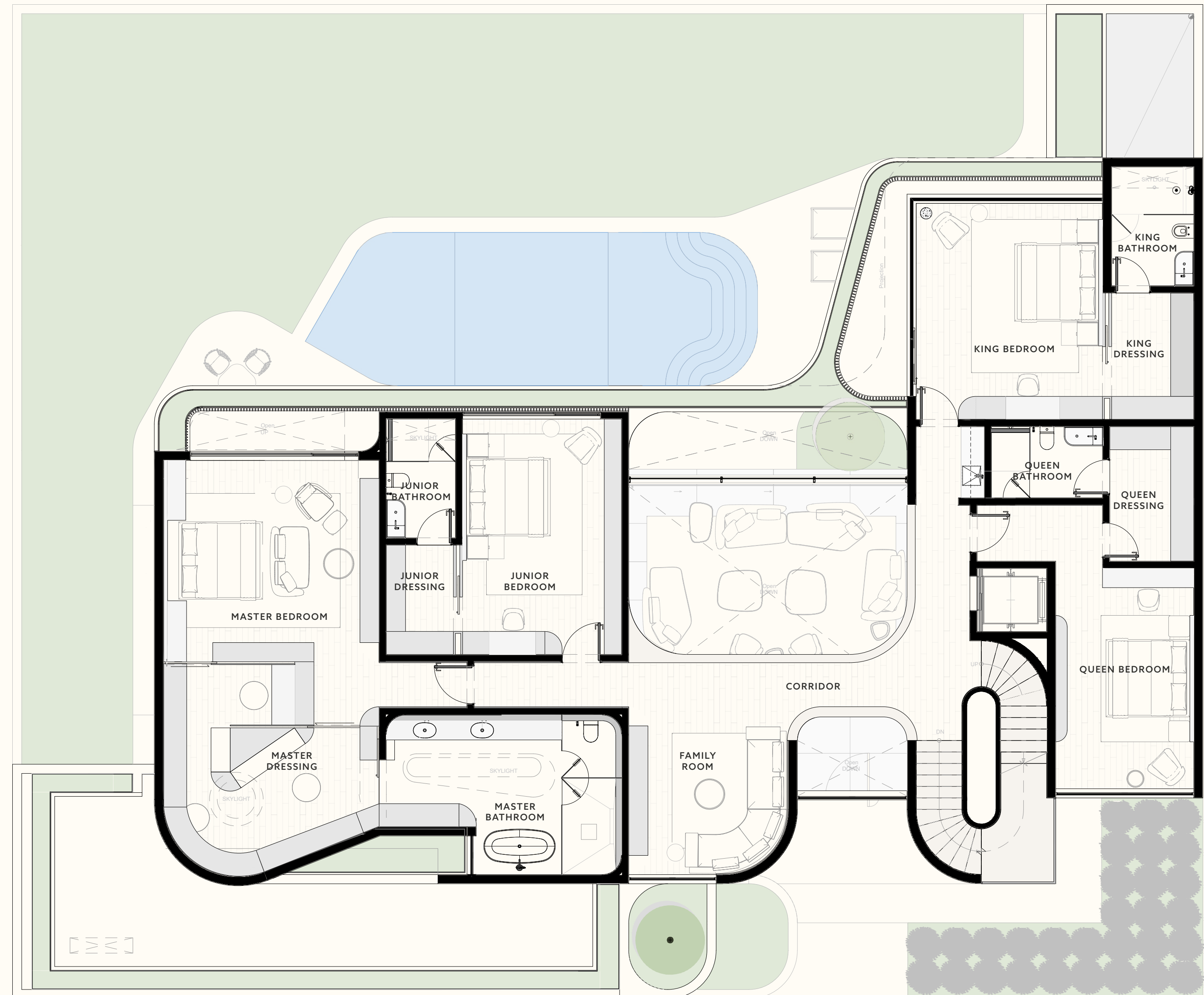
PLANS

# FIRST FLOOR



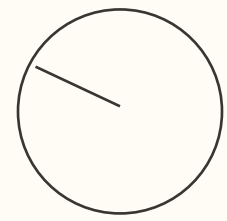
BUILT-UP  
325 M<sup>2</sup>

INSIDE	AREA
FAMILY ROOM	18.0 m <sup>2</sup>
STORAGE	10.5 m <sup>2</sup>
JUNIOR BEDROOM	25.5 m <sup>2</sup>
JUNIOR DRESSING	5.7 m <sup>2</sup>
JUNIOR BATHROOM	5.6 m <sup>2</sup>
QUEEN BEDROOM	25.7 m <sup>2</sup>
QUEEN DRESSING	7.7 m <sup>2</sup>
QUEEN BATHROOM	5.4 m <sup>2</sup>
KING BEDROOM	27.4 m <sup>2</sup>
KING DRESSING	7.9 m <sup>2</sup>
KING BATHROOM	6.6 m <sup>2</sup>
MASTER BEDROOM	35.2 m <sup>2</sup>
MASTER DRESSING	25.6 m <sup>2</sup>
MASTER BATHROOM	22.9 m <sup>2</sup>
CORRIDOR	27.5 m <sup>2</sup>



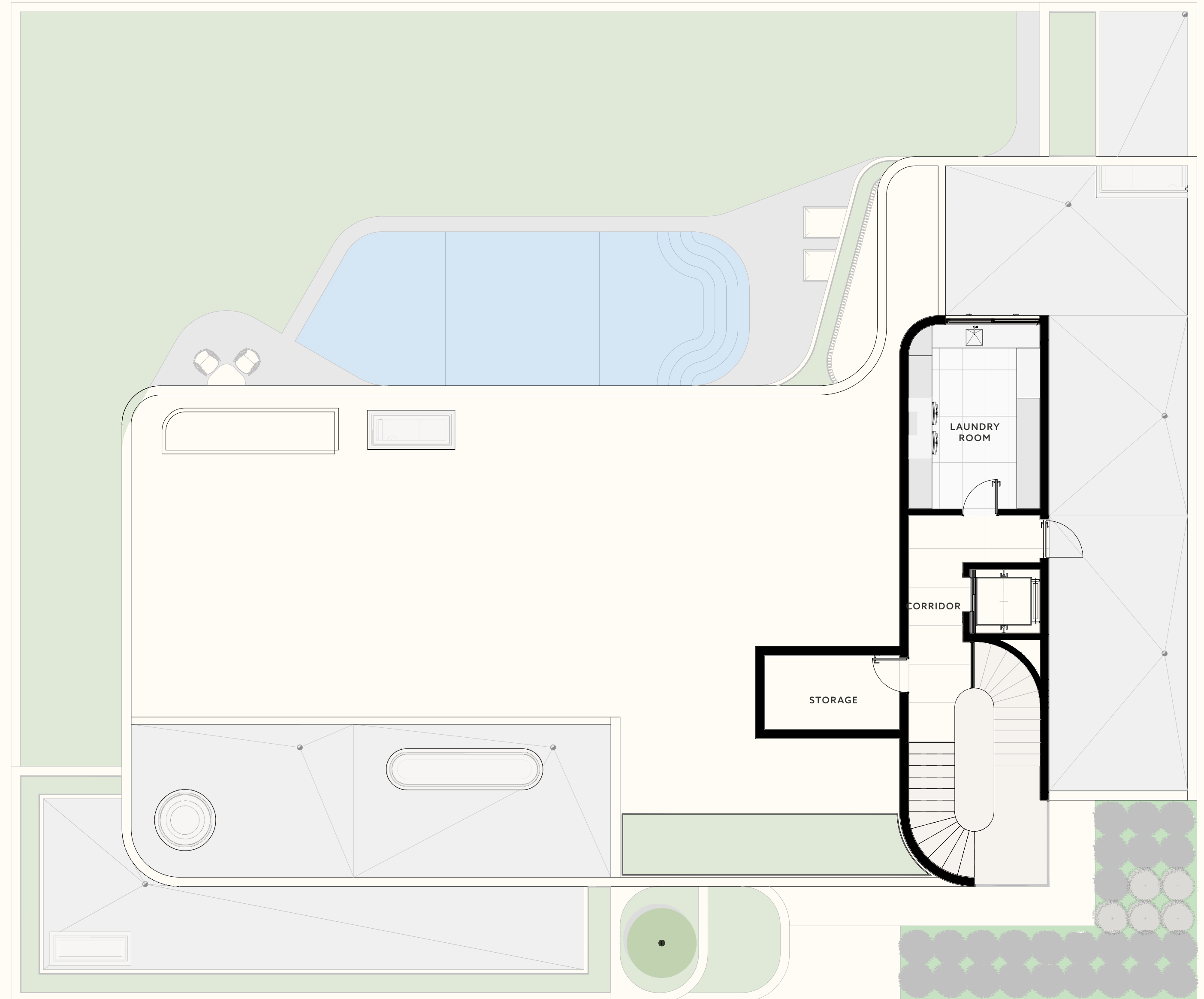
PLANS

# SECOND FLOOR



BUILT-UP  
62 M<sup>2</sup>

INSIDE	AREA
LAUNDRY ROOM	16.1 m <sup>2</sup>
STORAGE	6.7 m <sup>2</sup>
CORRIDOR	11.1 m <sup>2</sup>

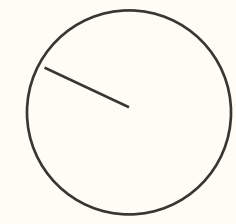


# CORNER PLANS

Corner plots enjoy the added privilege of extended built-up areas, including a private home office, sky terrace, and rooftop lounge—enhancing both functionality and lifestyle.

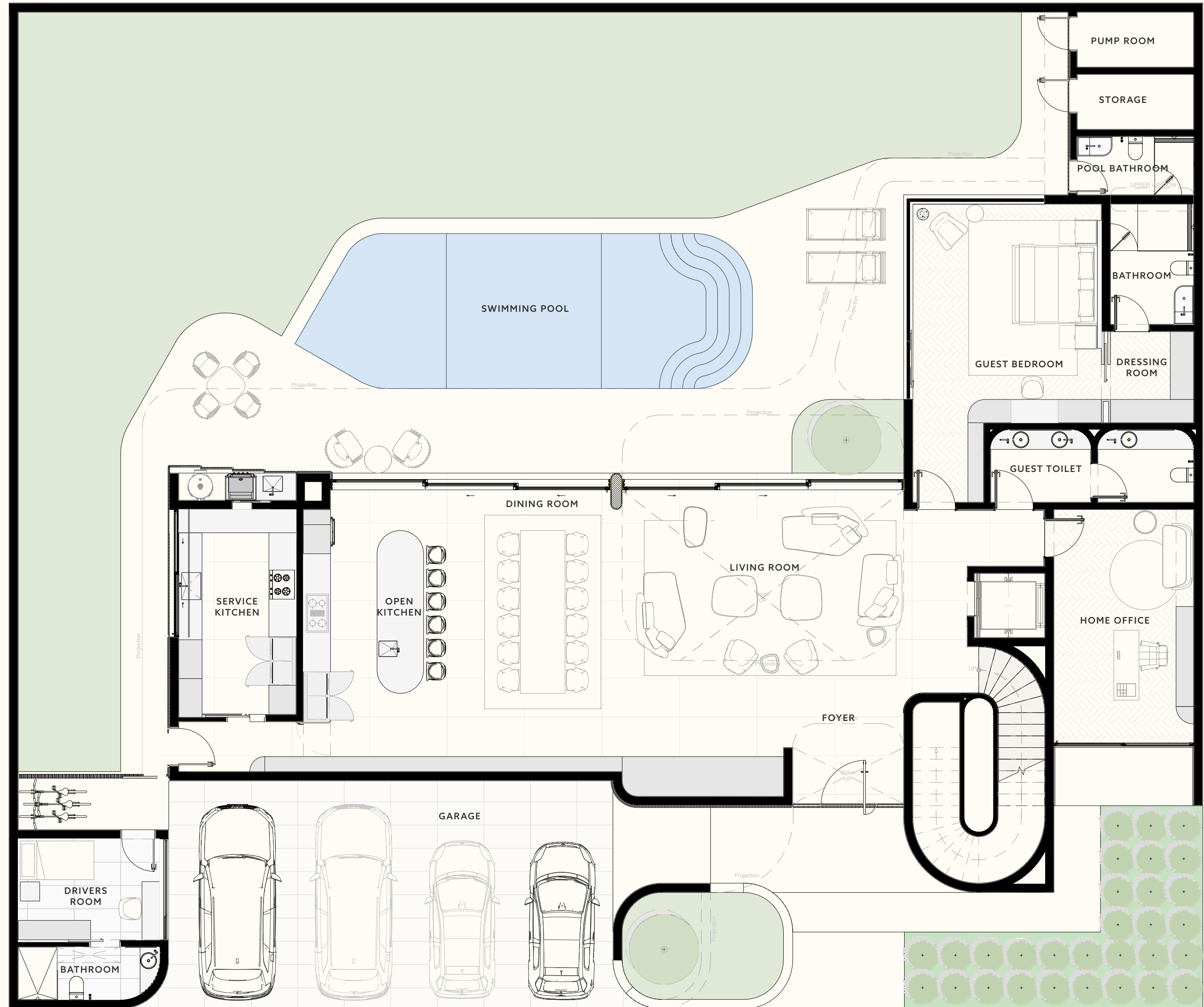
PLANS

# GROUND FLOOR



BUILT-UP  
448 M<sup>2</sup>

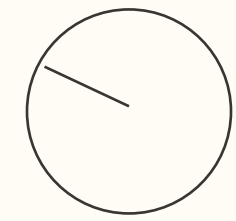
INSIDE	AREA
FOYER	8.0 m <sup>2</sup>
OPEN LIVING AREA	63.2 m <sup>2</sup>
OPEN KITCHEN	33.5 m <sup>2</sup>
SERVICE KITCHEN	16.0 m <sup>2</sup>
LARGE DINING ROOM	33.4 m <sup>2</sup>
HOME OFFICE	22.5 m <sup>2</sup>
GUEST BEDROOM	36.7 m <sup>2</sup>
GUEST BATHROOM	6.6 m <sup>2</sup>
OUTSIDE	AREA
SWIMMING POOL	42.0 m <sup>2</sup>
COVERED TERRACE	60.0 m <sup>2</sup>
POOL BATHROOM	4.5 m <sup>2</sup>
STORAGE	4.2 m <sup>2</sup>
PUMP ROOM	4.2 m <sup>2</sup>
GARDEN	200.0 m <sup>2</sup>
GARAGE	75.5 m <sup>2</sup>
DRIVERS ROOM	9.8 m <sup>2</sup>
DRIVERS BATHROOM	4.7 m <sup>2</sup>



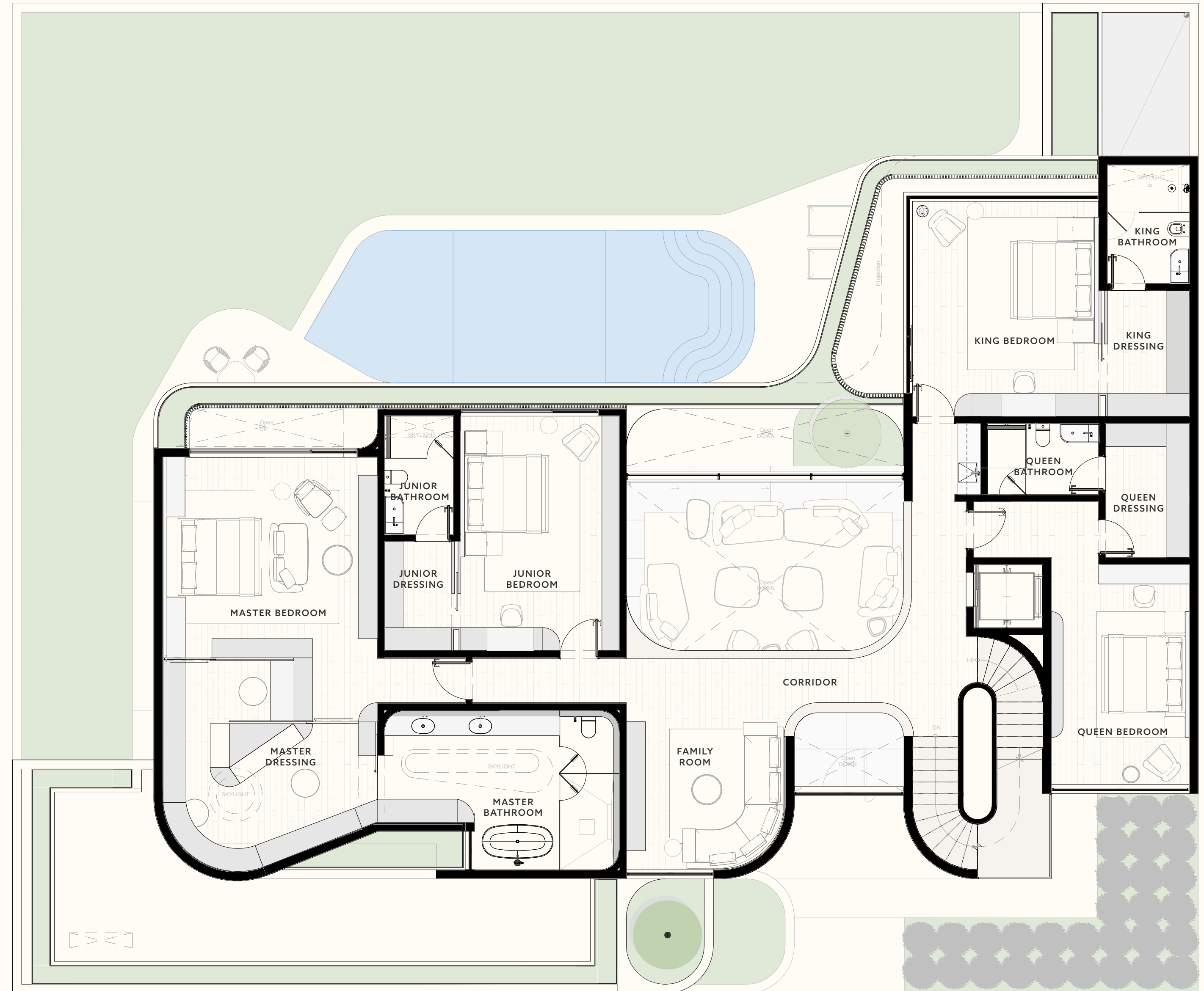
PLANS

# FIRST FLOOR

BUILT-UP  
325 M<sup>2</sup>

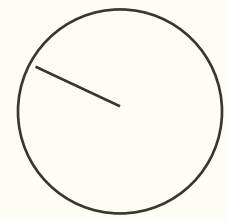


INSIDE	AREA
FAMILY ROOM	18.0 m <sup>2</sup>
STORAGE	10.5 m <sup>2</sup>
JUNIOR BEDROOM	25.5 m <sup>2</sup>
JUNIOR DRESSING	5.7 m <sup>2</sup>
JUNIOR BATHROOM	5.6 m <sup>2</sup>
QUEEN BEDROOM	25.7 m <sup>2</sup>
QUEEN DRESSING	7.7 m <sup>2</sup>
QUEEN BATHROOM	5.4 m <sup>2</sup>
KING BEDROOM	27.4 m <sup>2</sup>
KING DRESSING	7.9 m <sup>2</sup>
KING BATHROOM	6.6 m <sup>2</sup>
MASTER BEDROOM	35.2 m <sup>2</sup>
MASTER DRESSING	25.6 m <sup>2</sup>
MASTER BATHROOM	22.9 m <sup>2</sup>
CORRIDOR	27.5 m <sup>2</sup>



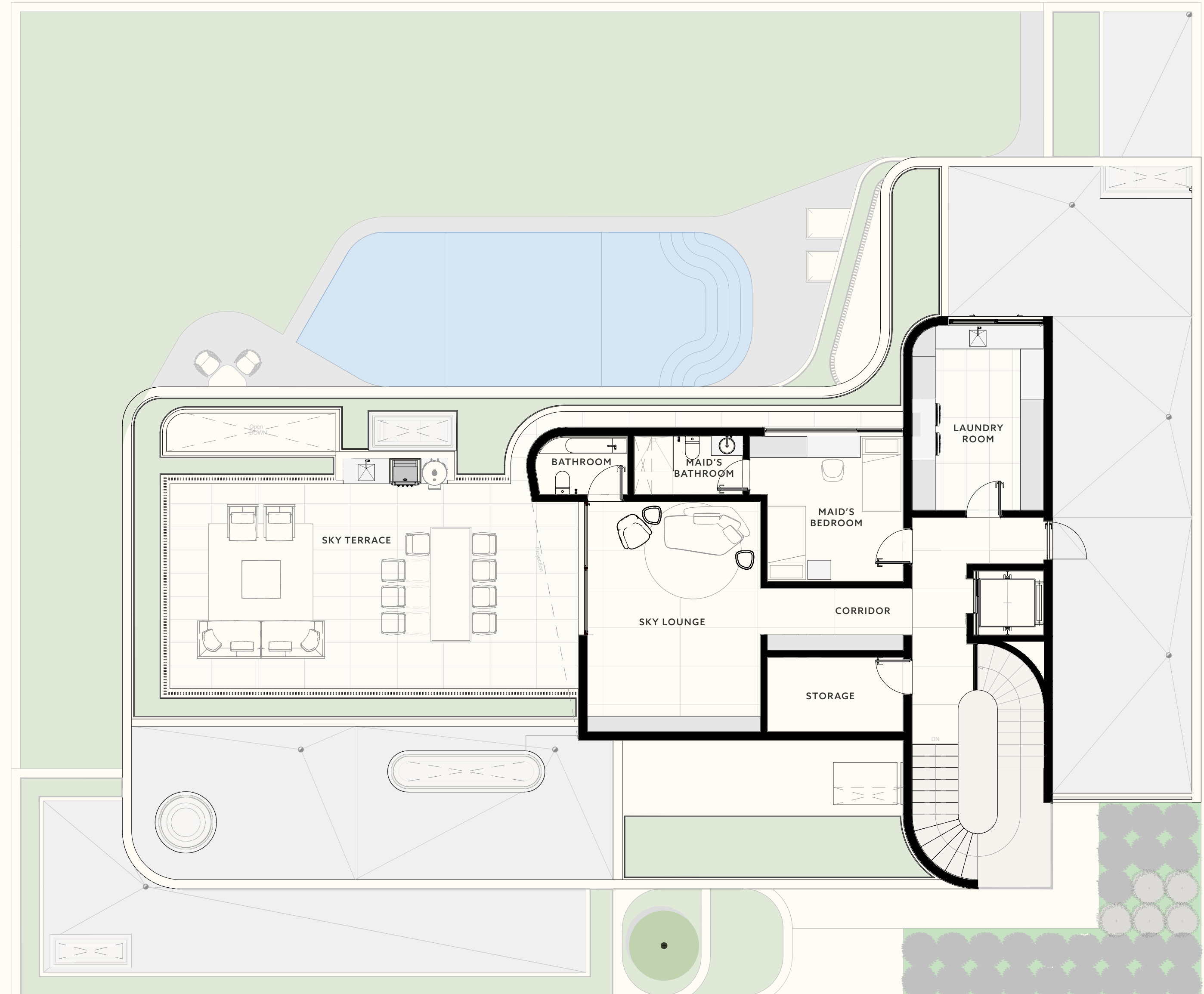
PLANS

# SECOND FLOOR



BUILT-UP  
127 M<sup>2</sup>

INSIDE	AREA
SKY LOUNGE	26.6 m <sup>2</sup>
BATHROOM	3.4 m <sup>2</sup>
STORAGE	6.7 m <sup>2</sup>
LAUNDRY ROOM	16.1 m <sup>2</sup>
MAID'S ROOM	14.0 m <sup>2</sup>
MAID'S BATHROOM	4.2 m <sup>2</sup>
CORRIDOR	17.3 m <sup>2</sup>
<hr/>	
OUTSIDE	AREA
OPEN TERRACE	70.0 m <sup>2</sup>



## BOOK AN APPOINTMENT

Please get in touch to arrange a viewing at your convenience. We'd be happy to walk you through the space, explore the design and material options, and share the thinking behind the layouts.

**ALAA AL HUSSAINI**

SALES EXECUTIVE

+973 387 00 111 | [ALAA@PLUMERIA.CO](mailto:ALAA@PLUMERIA.CO) | [PLUMERIA.BH](https://plumeria.bh)