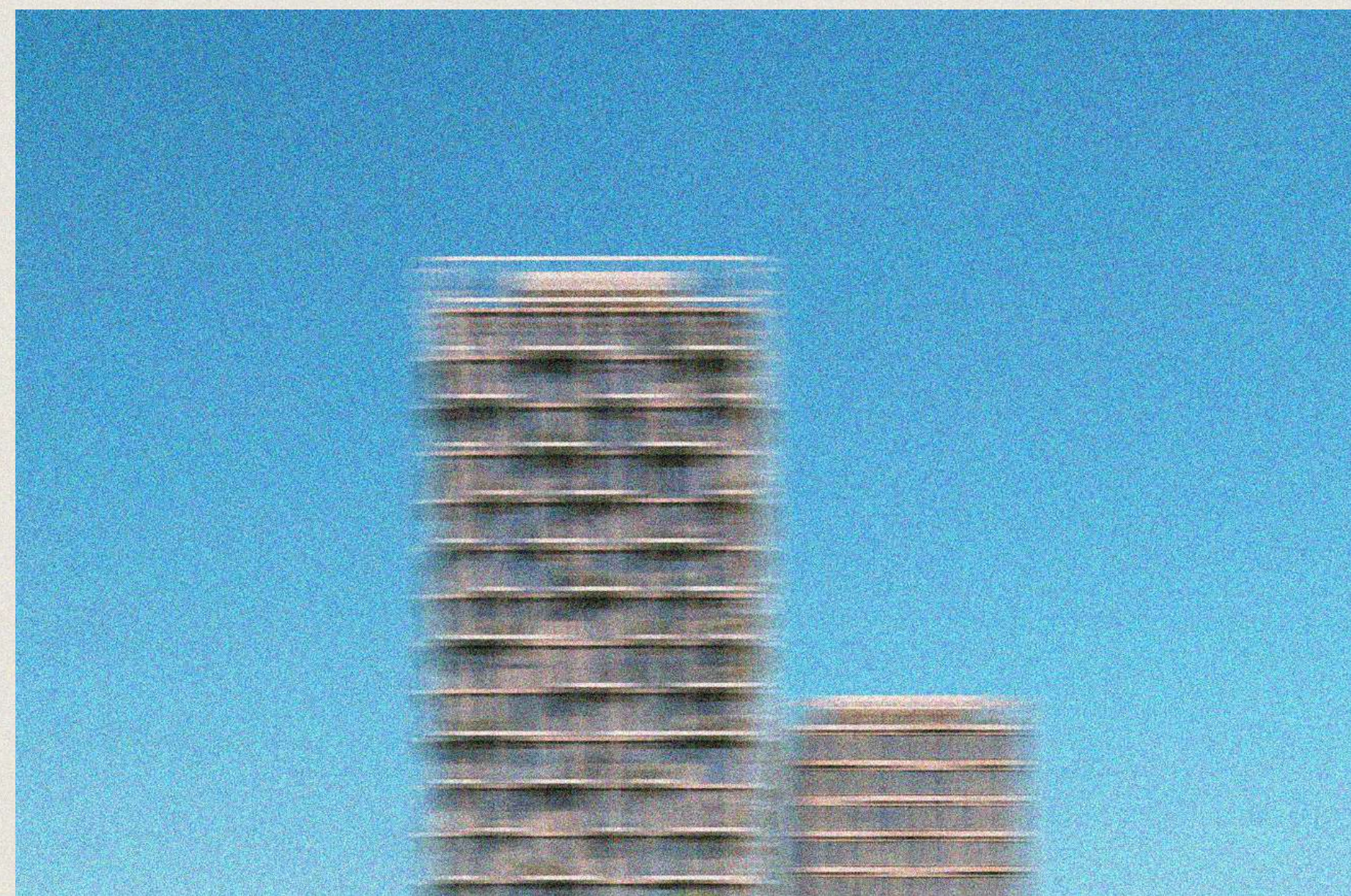


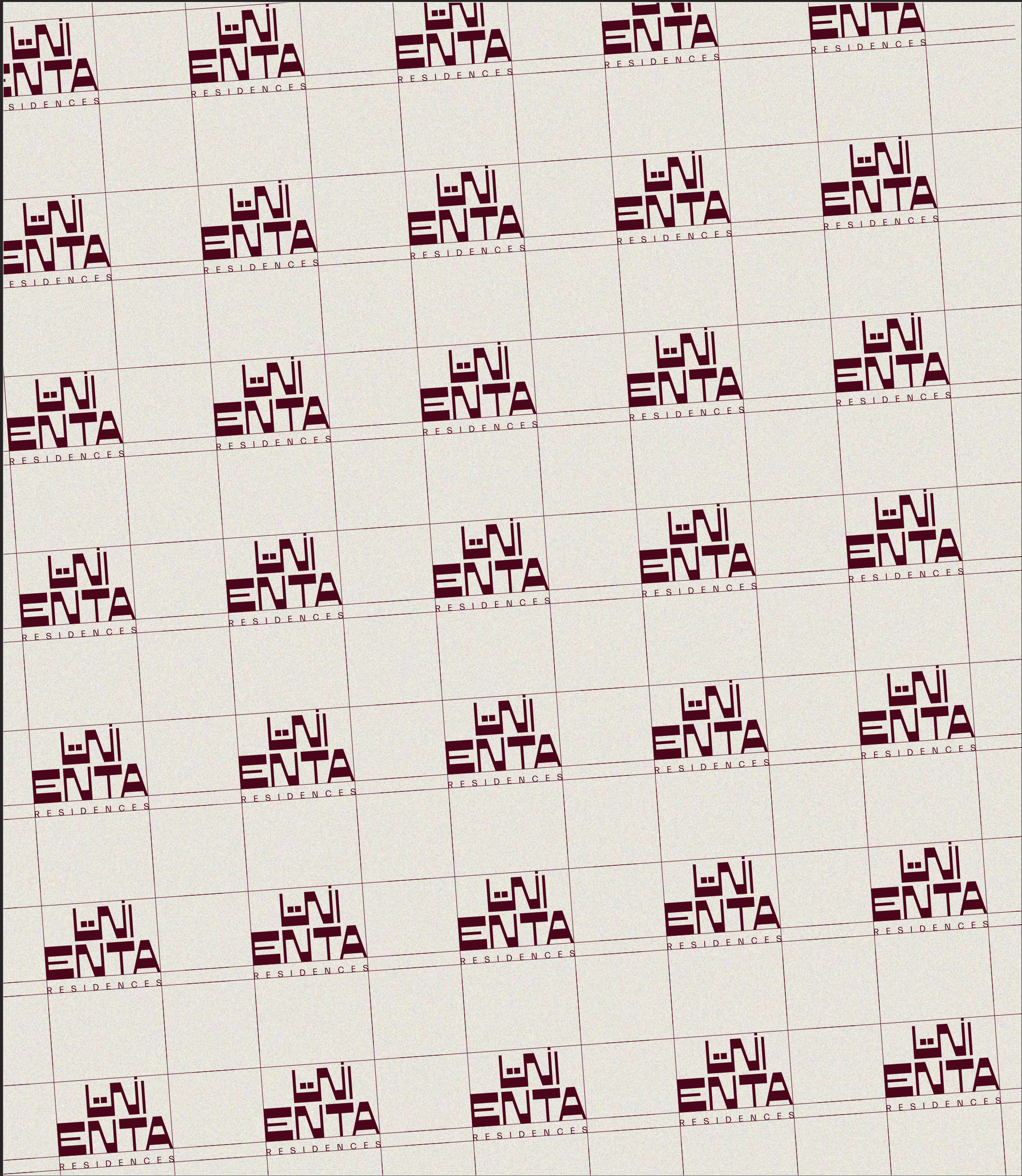
ENTA

M I N A



EDITION

(001)



ENTA

M I N A

WELCOME

(HOME)

**NOT JUST
ANOTHER
REAL-ESTATE
PRODUCT,
BUT A
DIFFERENT
ONE.**

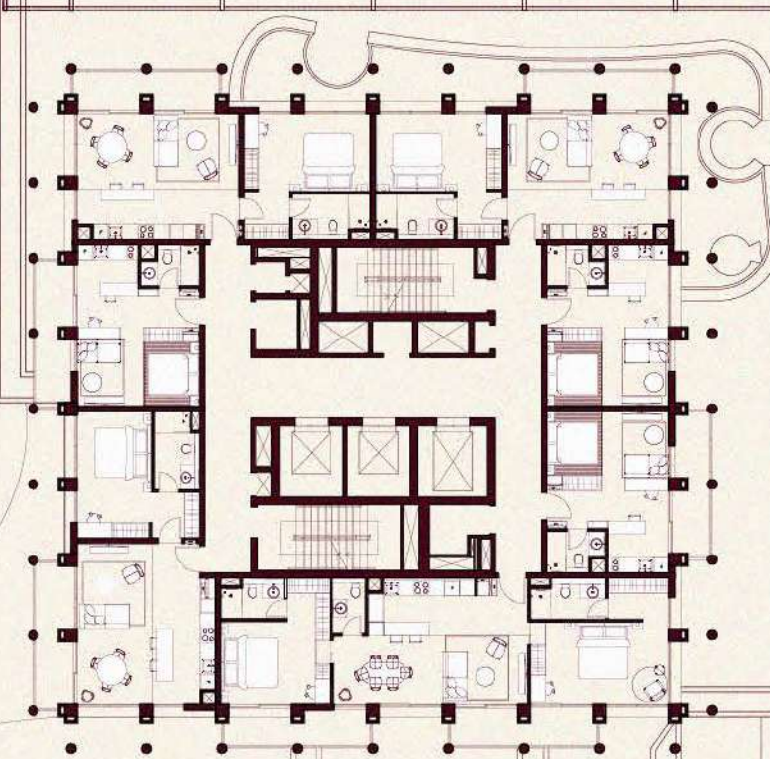


SPACE

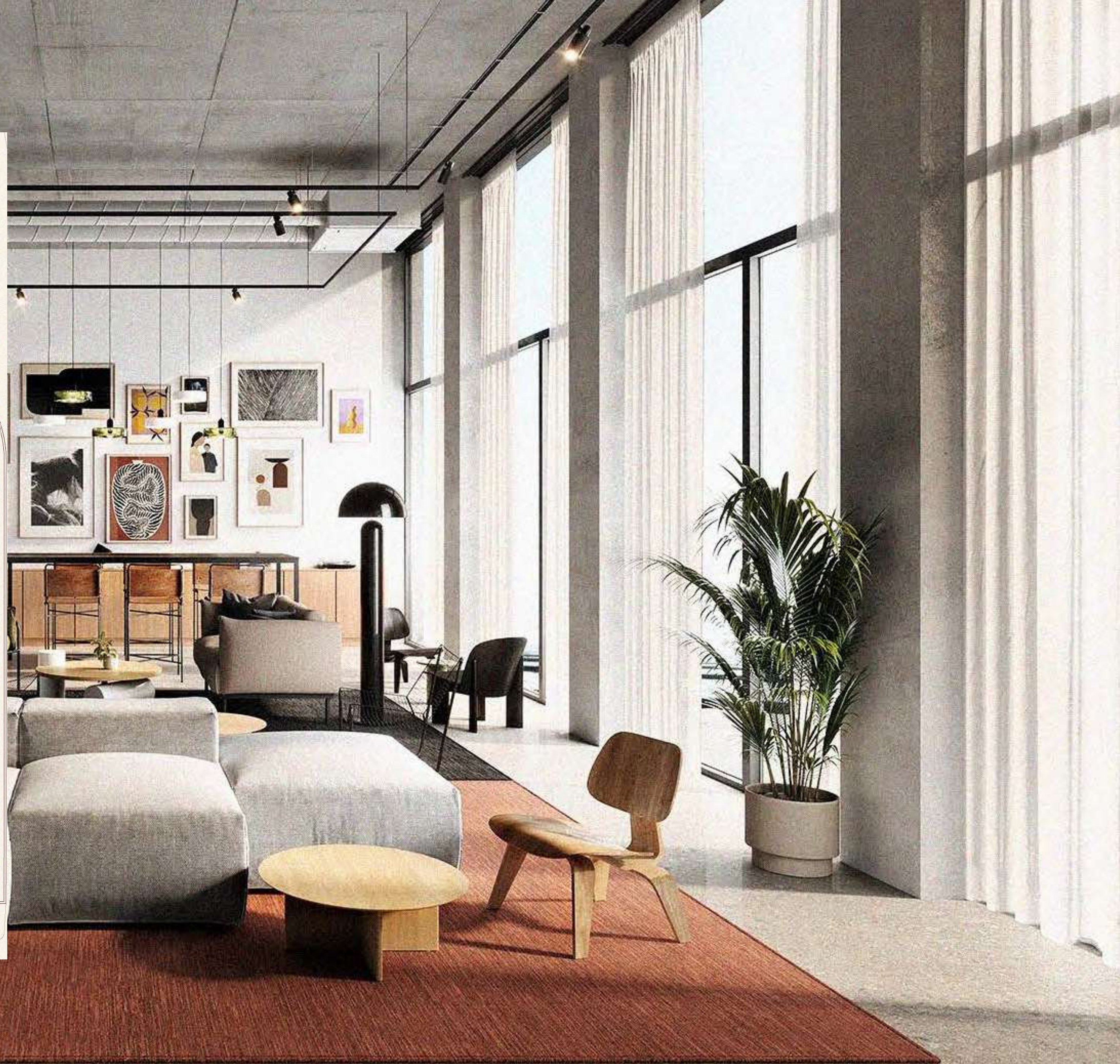
(FOUND)

A place for people who want to settle somewhere that really matches their style. Raw textures, natural life, rooms to breathe and room to be. It's not just how it looks, it's how it lets you live.

**DESIGNED
FOR A NEW
GENERATION
OF USERS.**



(LOUNGE)



WHAT YOU GET.



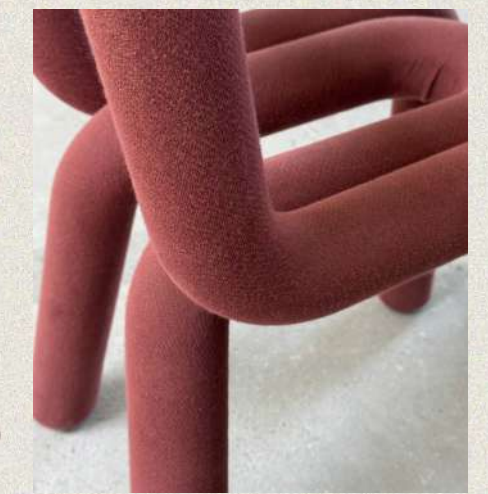
(002)



(003)



(004)



(005)

**NOT JUST
ANOTHER
BUILD.**

One that stands out. Designed with intention, effortless sophistication and character.

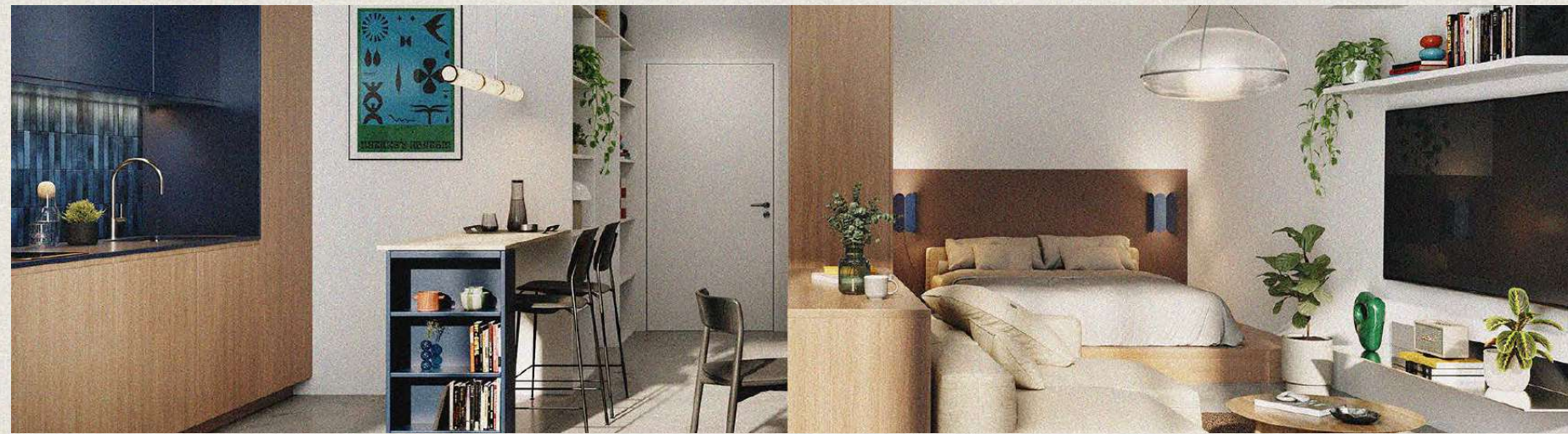
**JUST 120
UNITS.**

Studios, 1BR and 2BR. Not many. On purpose.



POOL

(SIDE)



(007)



(008)



(009)



(010)

**MOVE IN
READY.**

Your canvas. Your space.

**PRIVACY
WHEN YOU
NEED IT.**

All in one place. Spaces to connect.
Freedom to reconnect.

**ISLAND
LIFE.**

On the water. Off the radar. Urban yet
waterfront.

WORTH IT.

Attractive passive investment. Backed
by experience.

**ON YOUR
TERMS.**

Live in it. Lease it or let us manage it.



(011)



(012)



(013)



(014)



A CANVAS, DESIGNED TO REFLECT YOUR PERSONALITY AND STYLE



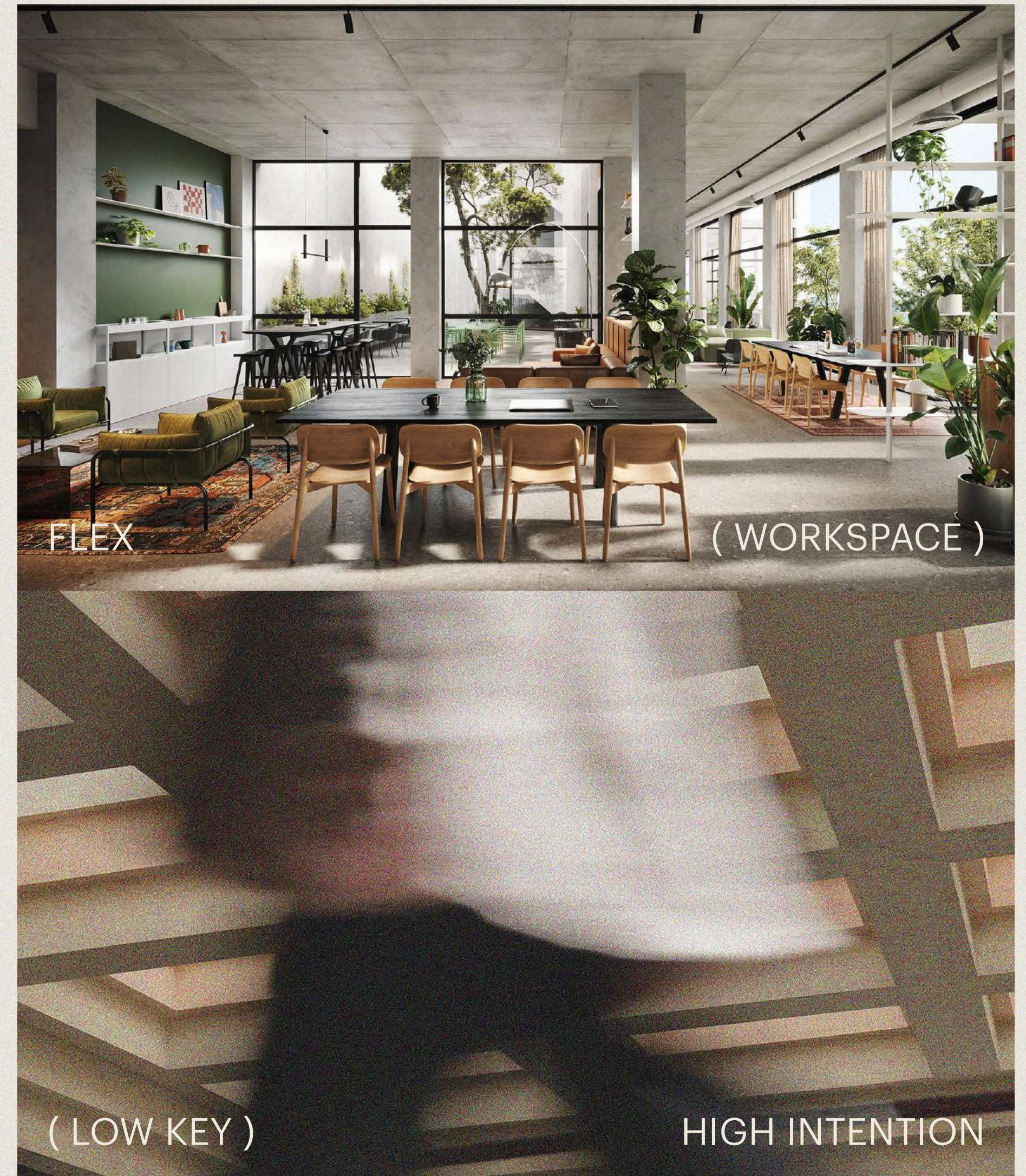
Minimal base. Maximal accents



Curated materials and finishes



Effortless sophistication





HOSTING

(ROOM)



COME ON IN.

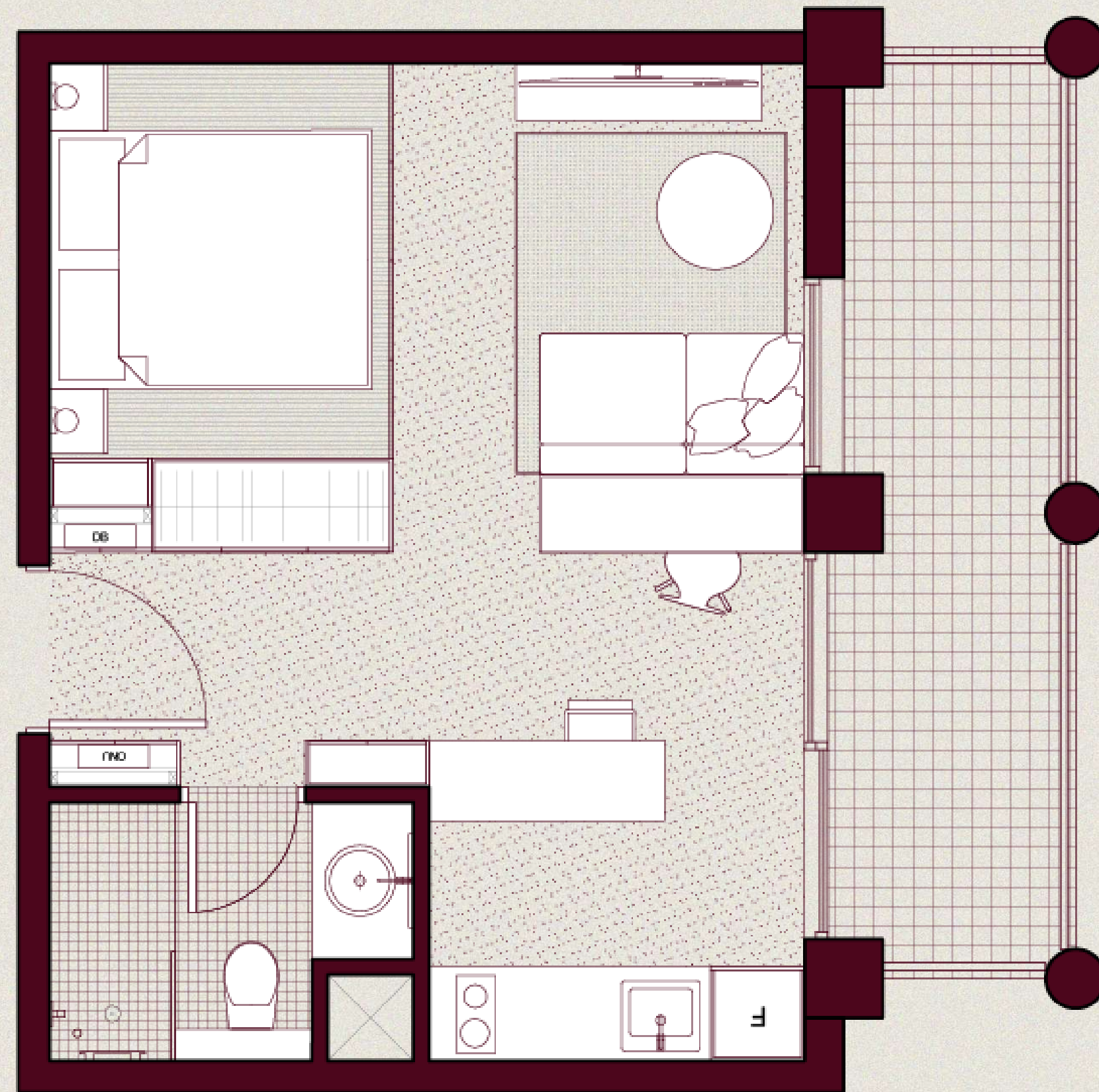
- 01 FLEX WORKSPACE
- 02 RESTAURANT
- 03 CAFÉ
- 04 CONCEPT STORE
- 05 RESIDENTS' LOUNGE
- 06 LIBRARY
- 07 HOSTING ROOM WITH CHEF'S KITCHEN
- 08 FITNESS CENTRE
- 09 INFRARED SAUNAS & COLD PLUNGE POOLS
- 10 SWIMMING POOL & OUTDOOR LOUNGE
- 11 ROOFTOP
- 12 WATERFRONT PROMENADE & BBQ AREAS



ENTA
ENTA
ENTA
ENTA
ENTA
ENTA
ENTA
ENTA
ENTA



STUDIO



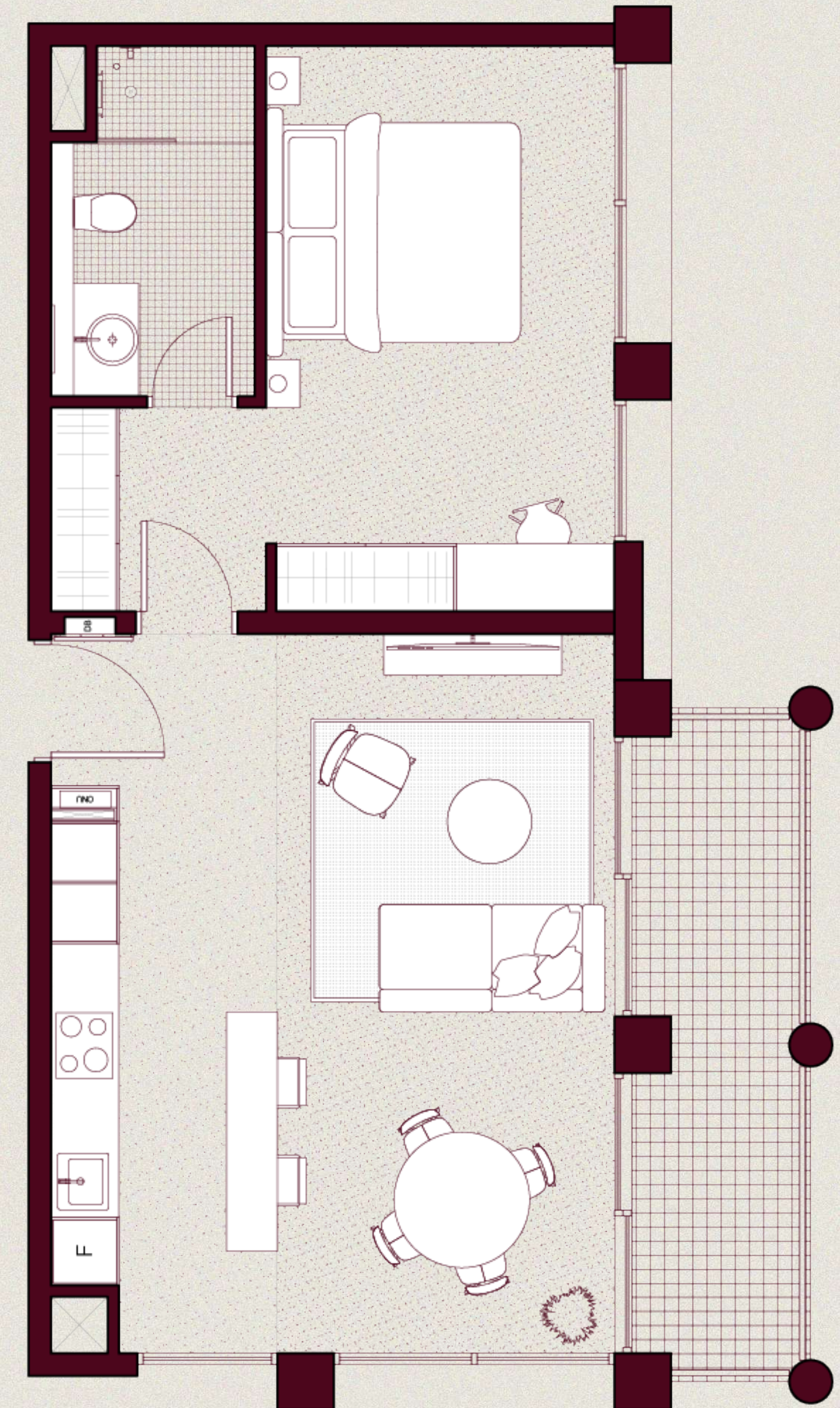
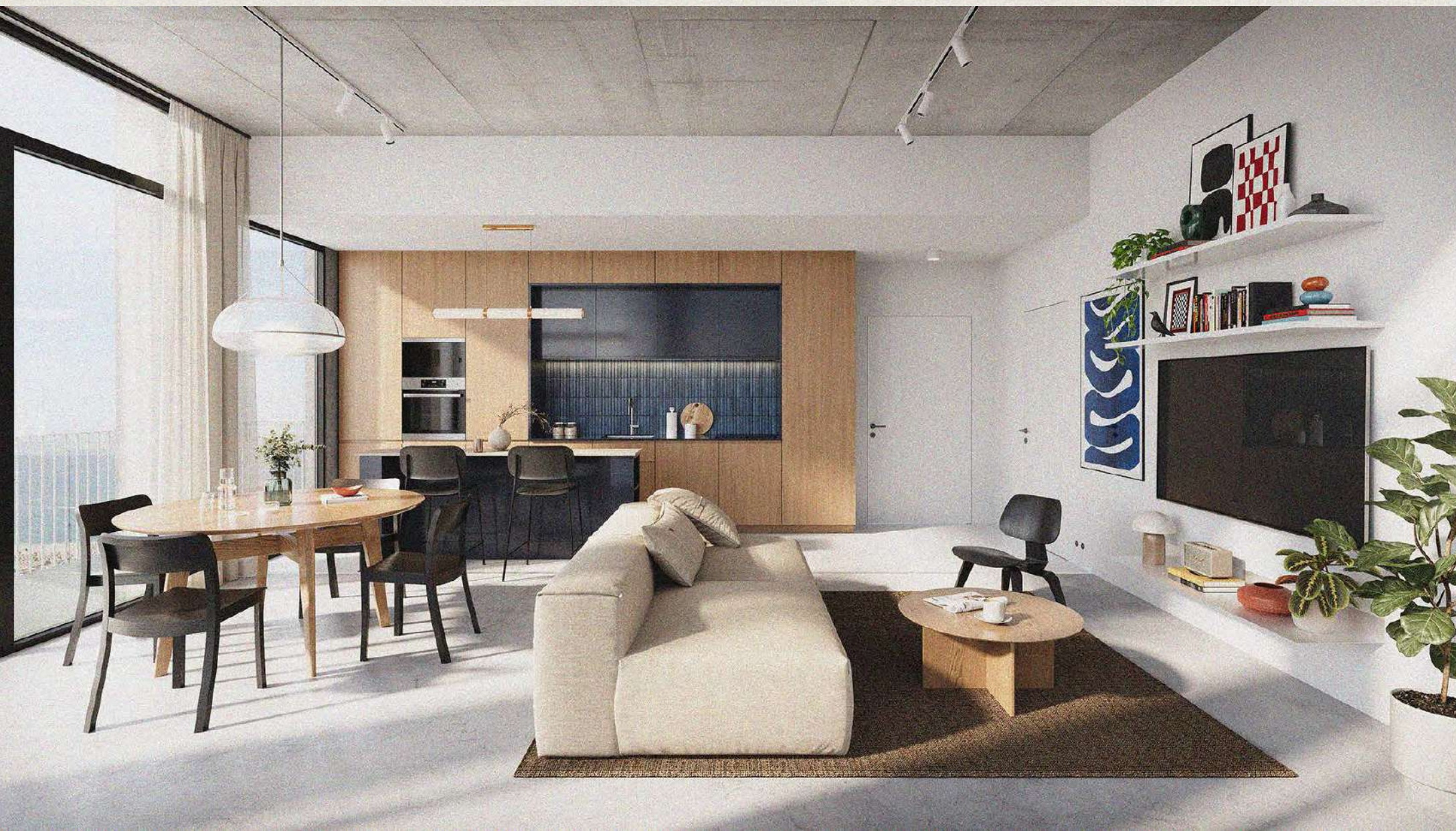
NUMBER OF UNITS
INTERNAL SIZE
BALCONY SIZE
TOTAL SIZE

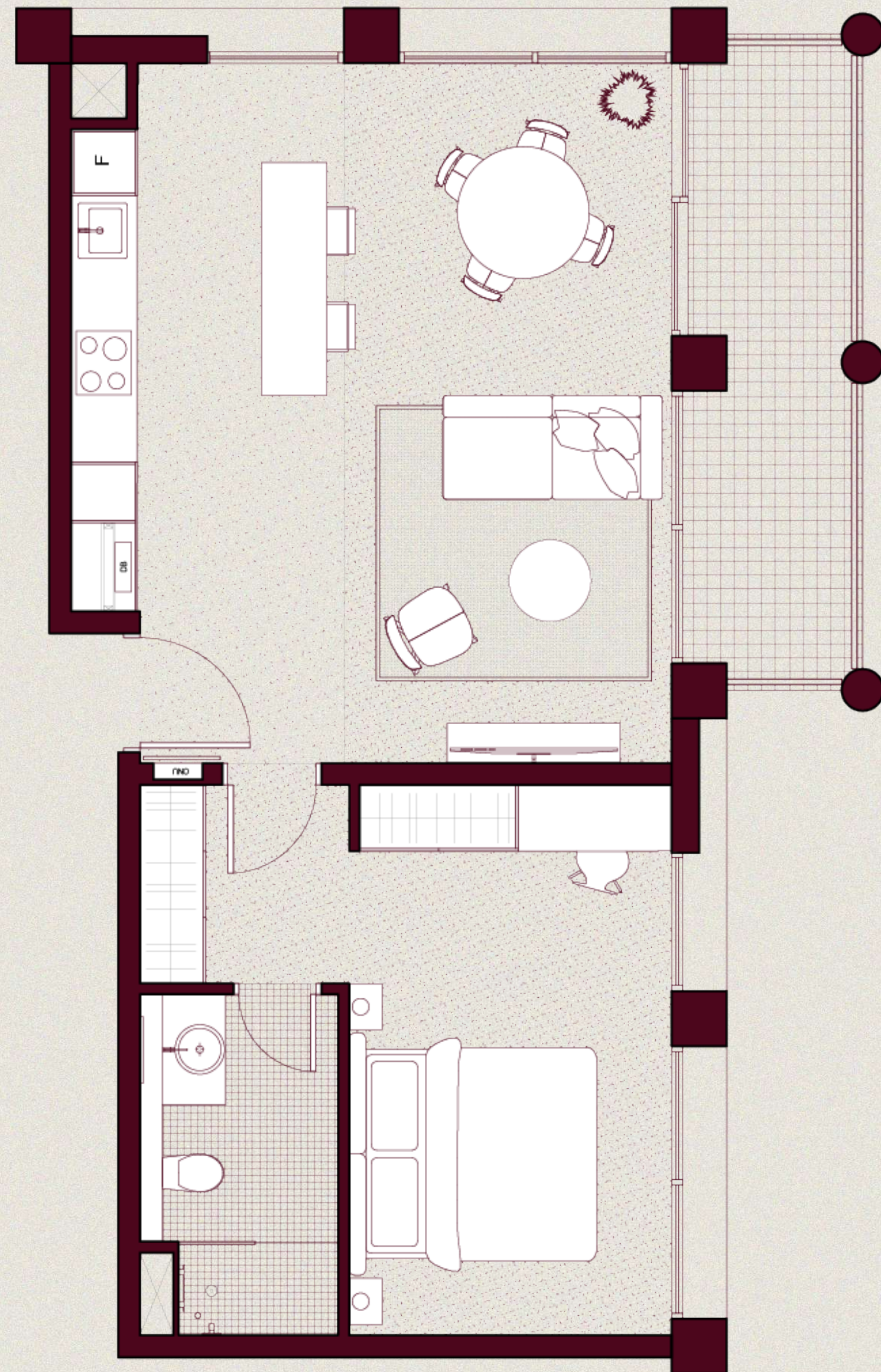
(51 UNITS)
(348 SQ.FT.)
(0-104 SQ.FT.)
(348-452 SQ.FT.)



ONE BEDROOM A

NUMBER OF UNITS	(34 UNITS)
INTERNAL SIZE	(647 SQ.FT.)
BALCONY SIZE	(52-334 SQ.FT.)
TOTAL SIZE	(699-981 SQ.FT.)





ONE BEDROOM B

NUMBER OF UNITS

(17 UNITS)

INTERNAL SIZE

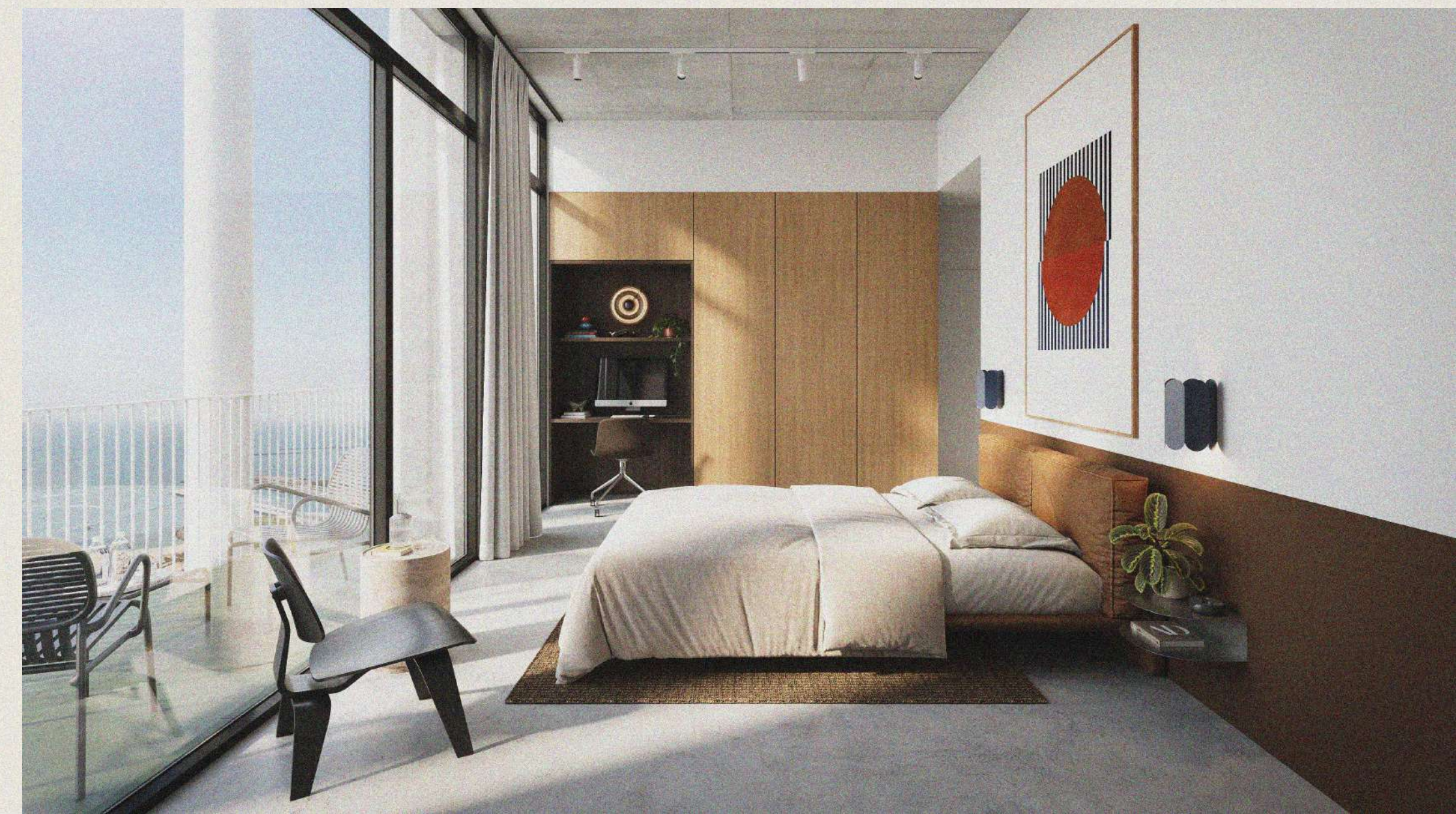
(662 SQ.FT.)

BALCONY SIZE

(104-334 SQ.FT.)

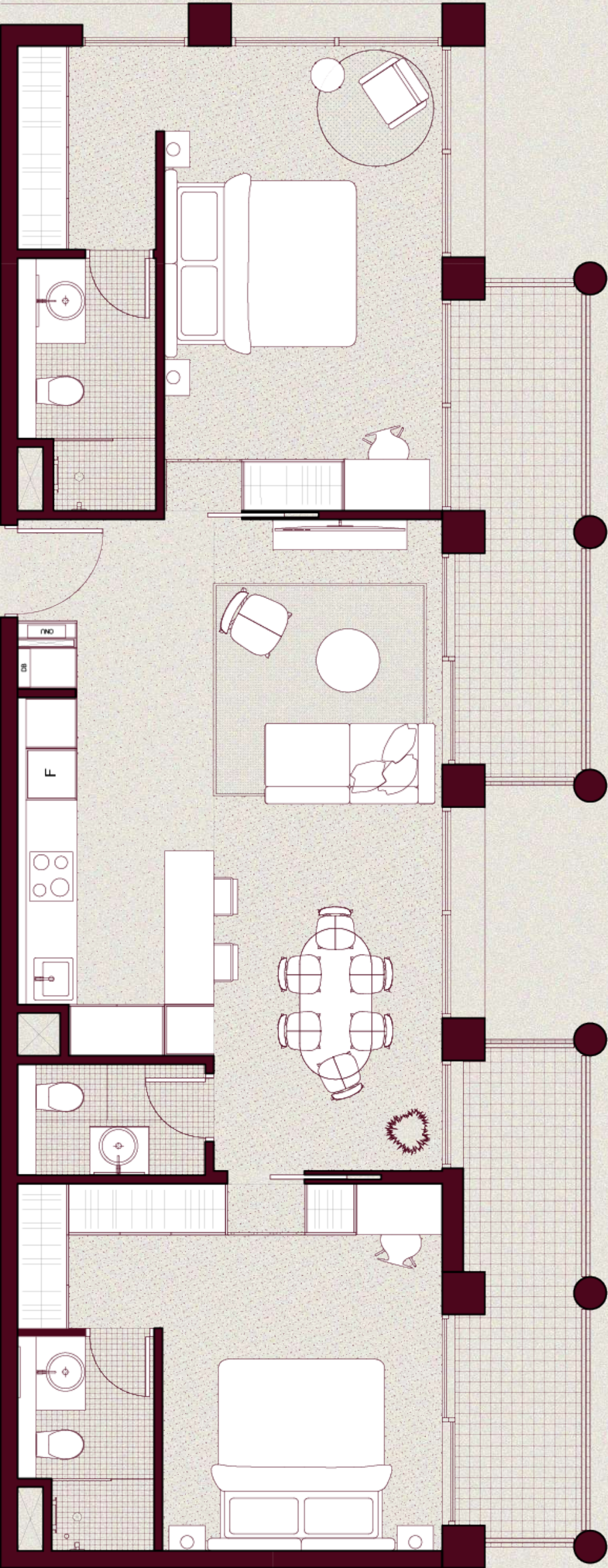
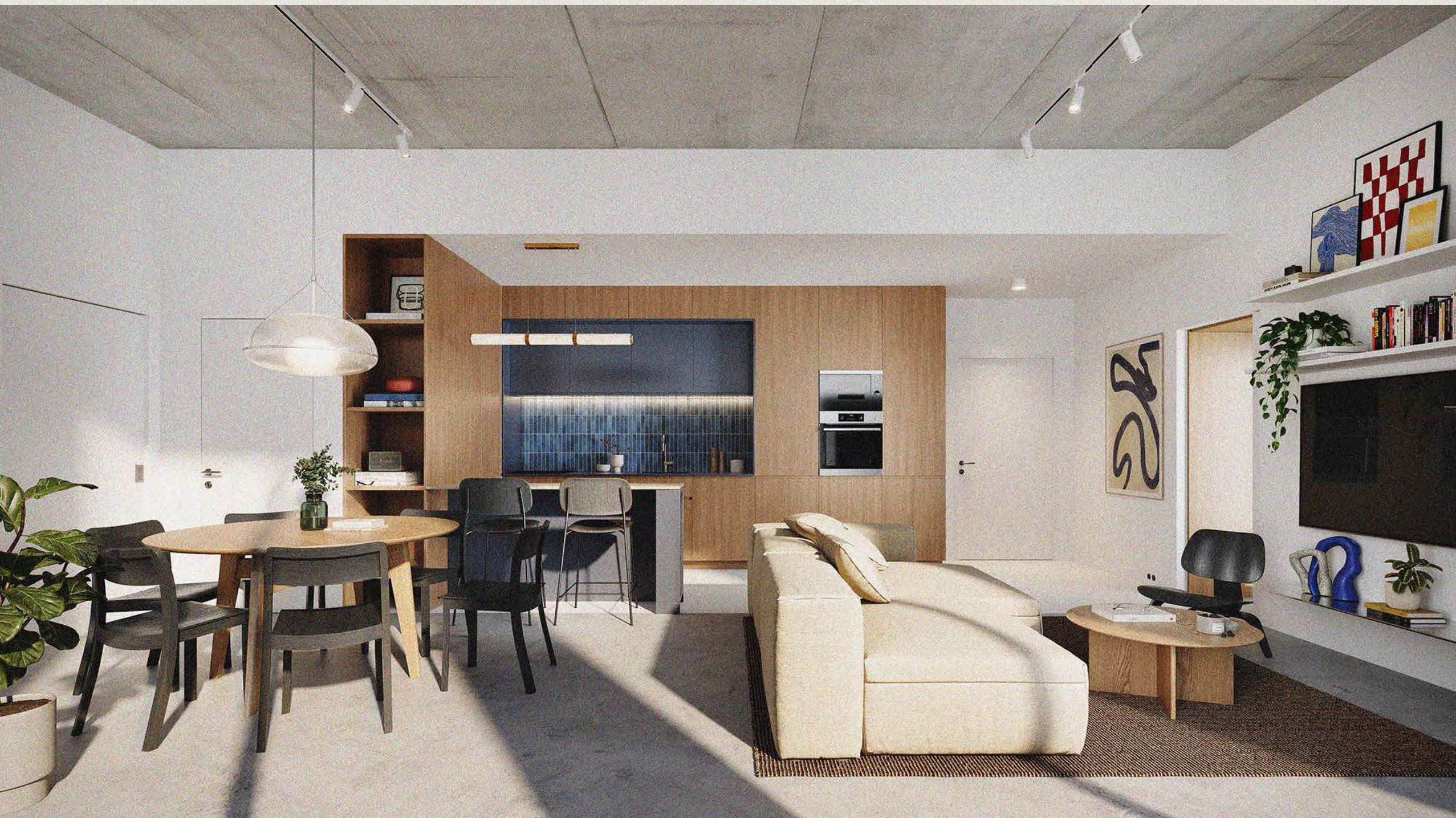
TOTAL SIZE

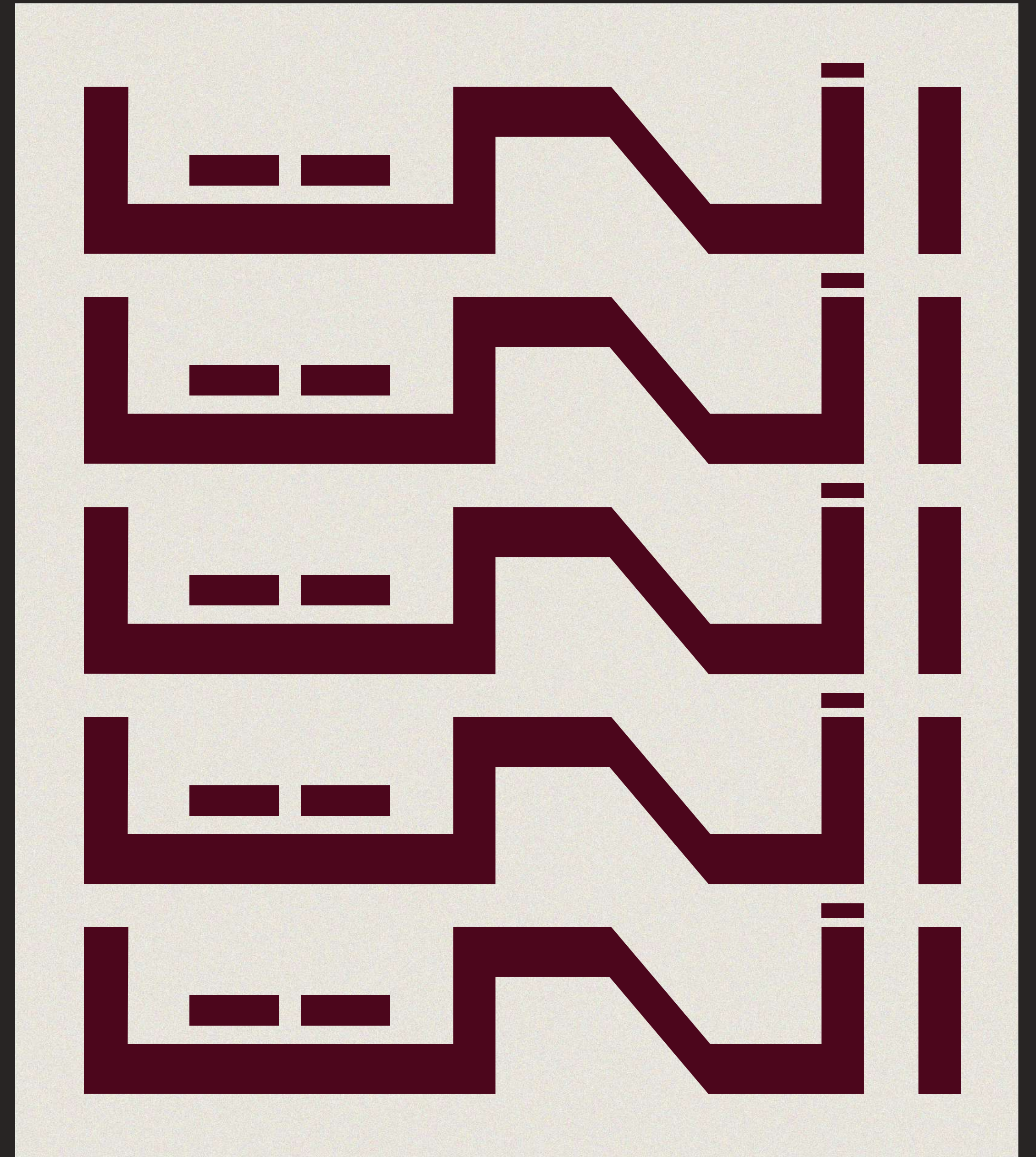
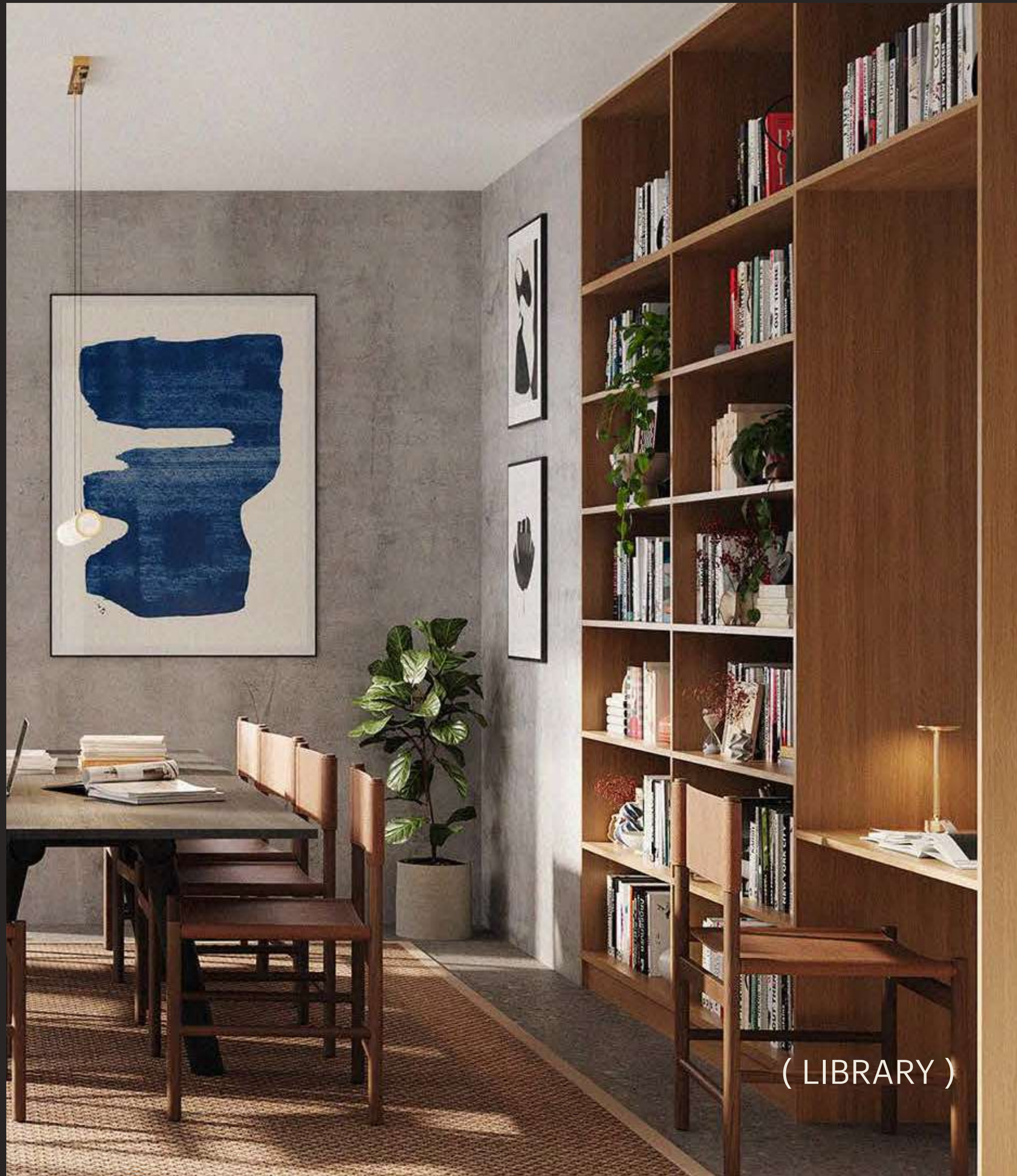
(766-996 SQ.FT.)



TWO BEDROOMS

NUMBER OF UNITS	(17 UNITS)
INTERNAL SIZE	(980 SQ.FT.)
BALCONY SIZE	(209-438 SQ.FT.)
TOTAL SIZE	(1189-1418 SQ.FT.)







WHERE IT'S AT

LOCATED ON
MINA ISLAND,
RAS AL KHAIMAH
(45 MINUTES FROM DUBAI)





ON THE MAP







(All images used are for illustrative purposes only and may not accurately represent the actual size, features, specifications, fittings, and furnishings. The developer reserves the right to make revisions or alterations as deemed necessary)

TWO FORCES. ONE VISION.

Brought to you by the team behind HIVE, one of the UAE's most talked-about creative living concepts—and RAK Properties, the force behind over 3,100 homes and Ras Al Khaimah's most thoughtfully built communities.

HIVE

RAK
PROPERTIES



PHONE

(+971 50 989 9347)

EMAIL

(SALES@ENTARESIDENCES.COM)

WEBSITE

(ENTARESIDENCES.COM)

INSTAGRAM

(@ENTARESIDENCES)

LINKEDIN

(ENTA RESIDENCES)

ENTA