

— THE —  
GROVE

— THE —  
GROVE



# *Enjoy Life at* **The Grove**

**The Grove is an oasis of luxury, engaging all the senses.**

Developed by JMJ Group Holding, one of Qatar's most dynamic and visionary developers, and designed by world renowned Zaha Hadid Architects, this landmark development redefines luxury living.

Blending architectural brilliance, referencing the unique patterns of erosion from the shifting desert sands and Qatar's coastal shores, with a deep commitment to sustainability and technological advancement, it offers connectivity with the land from which it is forged, and a vision of the future.









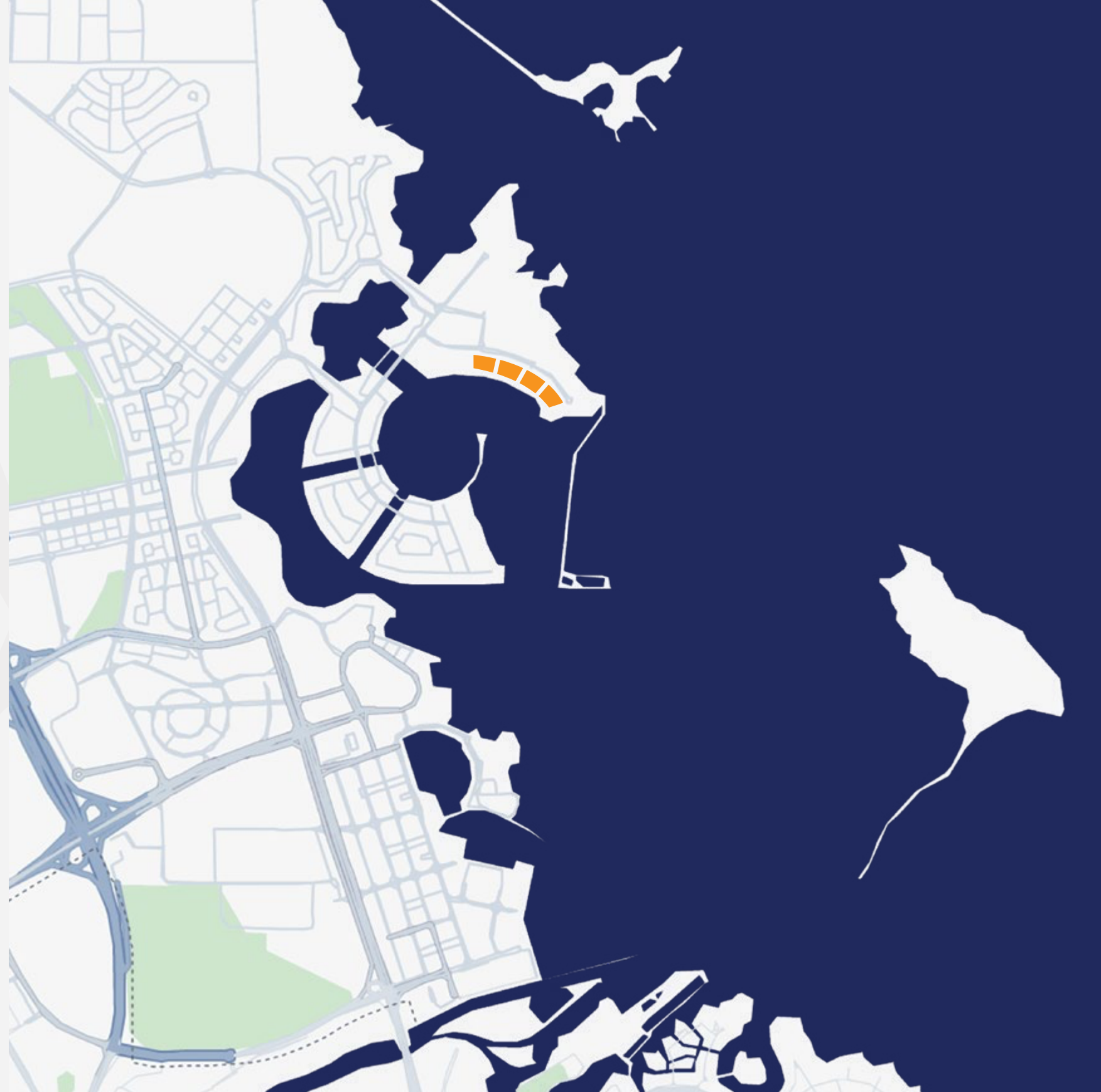


02

*A Location*

# Second to None

Perfectly located on Qetaifan Island North, within Lusail, Qatar's city of the future, The Grove is a destination of elegance, intrigue, relaxation and social engagement for the sophisticated elite. It is easily accessible by road, sea taxi or private yacht.







# 03

## *Where Design* **Meets Lifestyle**

- Iconic Architecture by Zaha Hadid Architects
- Beautifully designed landscapes, podium, and gardens
- Private balconies offering ample space
- Mixed-use development blending residential and commercial spaces
- Integrated smart home systems
- Strong focus on sustainability
- Retail and dining promenade with exclusive options
- A perfect blend of luxury and innovation
- Designed for a vibrant community lifestyle





04

## *Private Walkways,* **Landscaped Gardens, and Exclusive Amenities**

A unique raised promenade, extending to over 500 m in length, provides privacy for residents, with tranquil relaxation gardens, external infinity pools, beautifully landscaped sun lounge areas. A luxury spa and indoor pool, exquisite gym facilities and studios, private terraces, and refined private member's club, all with breathtaking views, further contribute to a life affirming experience. Children are equally provided for, with kids' pools, secure indoor play areas, wonderful outside adventure zones and cycle paths.

This elevated realm connects all buildings in The Grove, encouraging a real sense of community. Immersing residents in nature, it serves as a serene sanctuary, seamlessly blending relaxation, recreation, and sustainable living, enriching the body, mind and soul.















## *Cool Alfresco Dining and* **Luxury Boutique Shopping**

Delight in a journey of discovery amongst a wonderful array of exquisite fashion boutiques, world class restaurants, brasseries, patisseries, and gourmet delicatessens. This sustainably cooled, dynamic, society-boulevard, provides all that you need right on your doorstep, encouraging a vibrant community lifestyle.





# *Elegant* Residences

The Grove provides for 293 elegant residences ranging in size from beautifully apportioned one bedroom units, with spacious balconies, to sumptuous four bedroom duplex penthouses with secluded roof-top terraces and private pool. Each Residence is situated in a vibrant waterfront setting, with panoramic sea views across calm waters to the glittering lights of Lusail beyond.







06

## *Contact* **Details**

Email: [info@jmjgroupholding.com](mailto:info@jmjgroupholding.com)

Phone: 800-3333

Website: [www.jmjgroupholding.com](http://www.jmjgroupholding.com)





—THE—  
GROVE