


THE COLLECTION

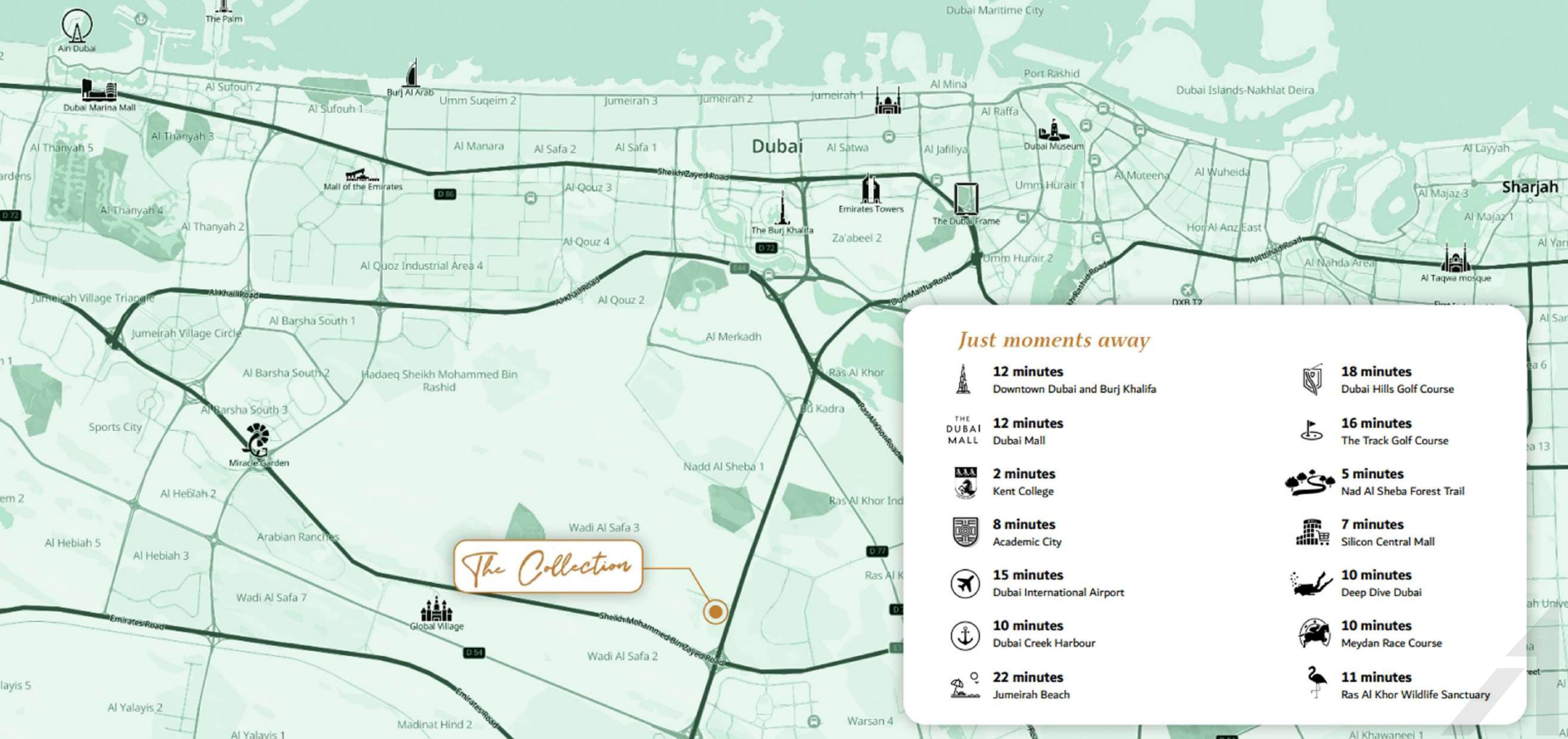
The Pinnacle Of Refined Living

An aerial photograph of a river delta, likely the Amazon, showing a complex network of channels and islands. The water is a deep green, while the exposed land is a golden-brown color. The pattern is intricate and organic, resembling a map or a piece of art. The right side of the image fades into a light blue background where the text is located.

“ We are creating urban homes that seamlessly integrate with nature, aiming to cultivate a modern and vibrant way of living. ”



Embark on a journey with NASER Group, Melbourne's distinguished developer, as we make our debut in Dubai with 'The Collection'. Our homes are more than living spaces; they are harmonious extensions of the natural world. Rooted in meticulous design and infused with the essence of nature, each residence is a testament to our commitment to crafting inspiring homes. Discover the symphony of elegance and nature at 'The Collection'."



Just moments away



12 minutes
Downtown Dubai and Burj Khalifa



12 minutes
Dubai Mall



2 minutes
Kent College



8 minutes
Academic City



15 minutes
Dubai International Airport



10 minutes
Dubai Creek Harbour



22 minutes
Jumeirah Beach



18 minutes
Dubai Hills Golf Course



16 minutes
The Track Golf Course



5 minutes
Nad Al Sheba Forest Trail



7 minutes
Silicon Central Mall



10 minutes
Deep Dive Dubai



10 minutes
Meydan Race Course



11 minutes
Ras Al Khor Wildlife Sanctuary

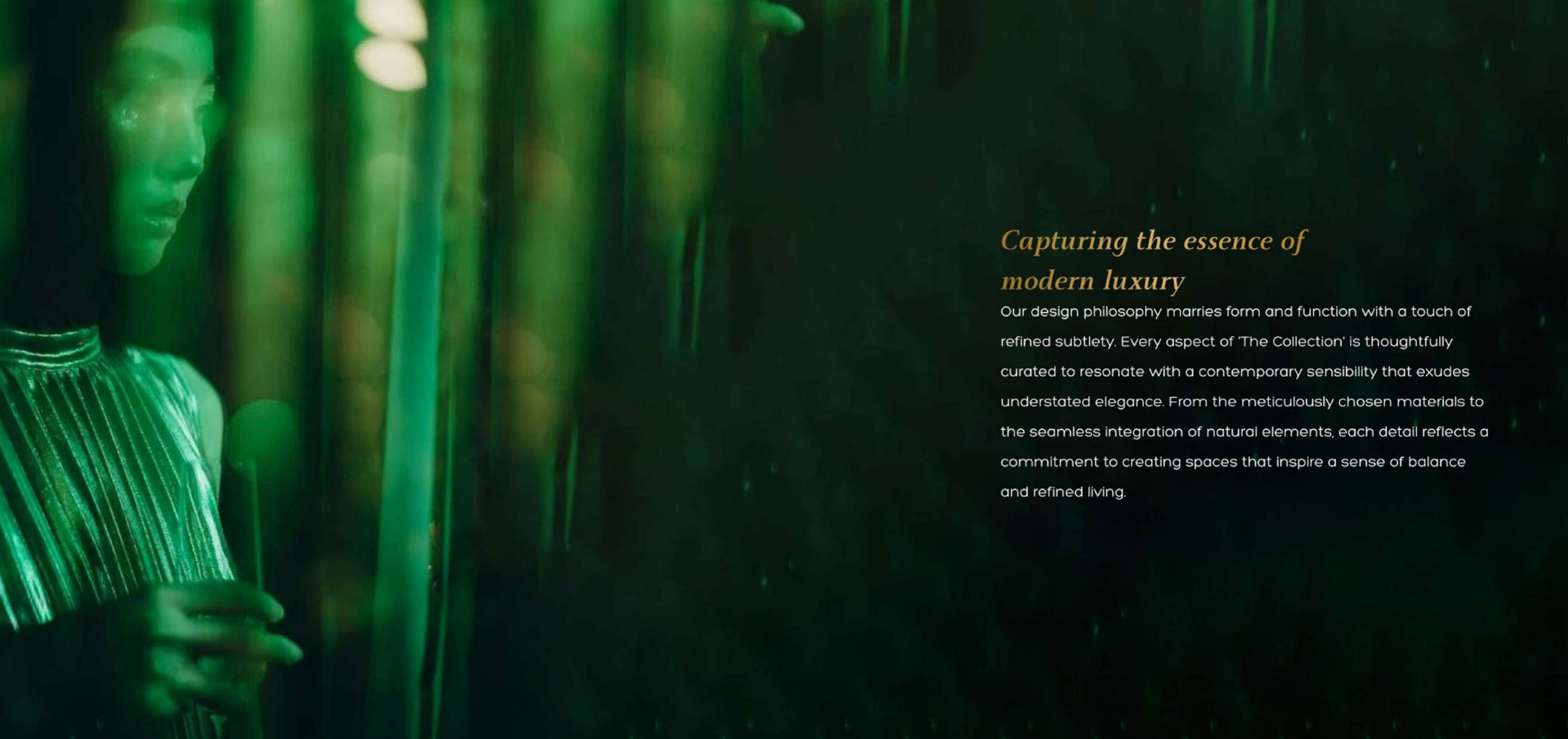


District 11, Meydan

District 11 emerges as a dynamic and auspicious addition to Dubai's landscape. This avant-garde development unveils an array of enticing amenities, positioned within a coveted locale.

Encompassing a harmonious blend of residential, commercial, and retail spaces, District 11 redefines urban living through its multi-faceted approach.

A testament to urban ingenuity, District 11 thrives on connectivity, fostering seamless access to major thoroughfares that intricately weave through Dubai's landscape. This development beckons a future where convenience, vibrancy, and cosmopolitan living intersect harmoniously.



Capturing the essence of modern luxury

Our design philosophy marries form and function with a touch of refined subtlety. Every aspect of 'The Collection' is thoughtfully curated to resonate with a contemporary sensibility that exudes understated elegance. From the meticulously chosen materials to the seamless integration of natural elements, each detail reflects a commitment to creating spaces that inspire a sense of balance and refined living.

The Collection

"The Collection" is a pinnacle of architectural finesse and holistic living. A symphony of nature-inspired luxury, this residential gem reimagines the essence of urban dwelling. "The Collection" introduces an impeccable fusion of serene landscapes and contemporary design.



Comprising thoughtfully crafted apartments, this exclusive community offers a harmonious retreat that balances modern convenience with a deep-rooted connection to nature. Experience the art of inspired living at "The Collection," where every detail is meticulously curated to evoke contentment and elevate the spirit.



Harmony with Nature

Setting a new standard

Our residential building proudly boasts a groundbreaking exterior façade crafted entirely from travertine - an unprecedented feat in Dubai's landscape. This remarkable use of materials redefines luxury living, presenting a distinctive façade that exudes opulence and sophistication.



STEP INTO
LUXURY





Innovative Design, Nature Backdrop: A Symphony of modern Living



elevating the essence of aquatic indulgence



Innovative Design, Nature Backdrop: A Symphony of modern Living



Embark on a journey with NASER Group, Melbourne's distinguished developer, as we make our debut in Dubai with 'The Collection'. Our homes are more than living spaces; they are harmonious extensions of the natural world. Rooted in meticulous design and infused with the essence of nature, each residence is a testament to our commitment to crafting inspiring homes. Discover the symphony of elegance and nature at 'The Collection'."

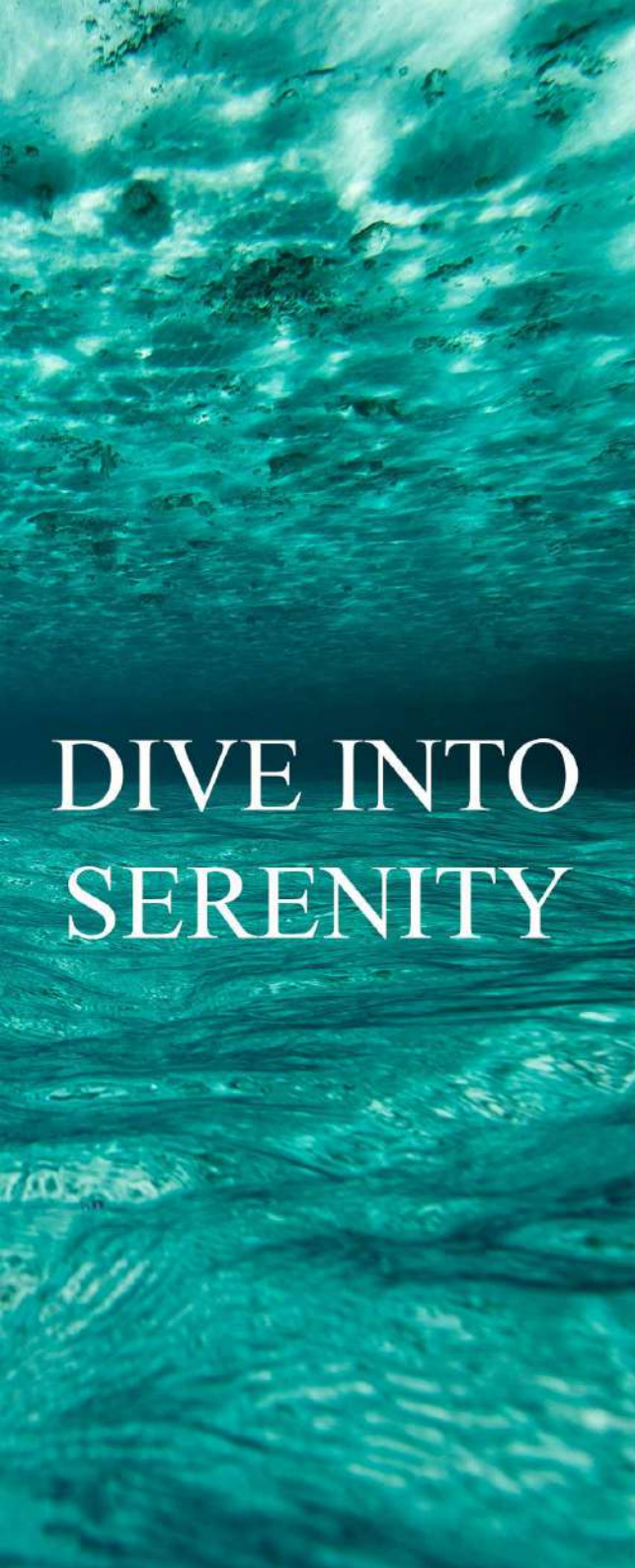
STEP INTO
LUXURY





The lobby welcomes you with grandeur, featuring soaring high ceilings adorned with organically shaped bronze cladding, setting the tone for a luxurious living experience





DIVE INTO
SERENITY





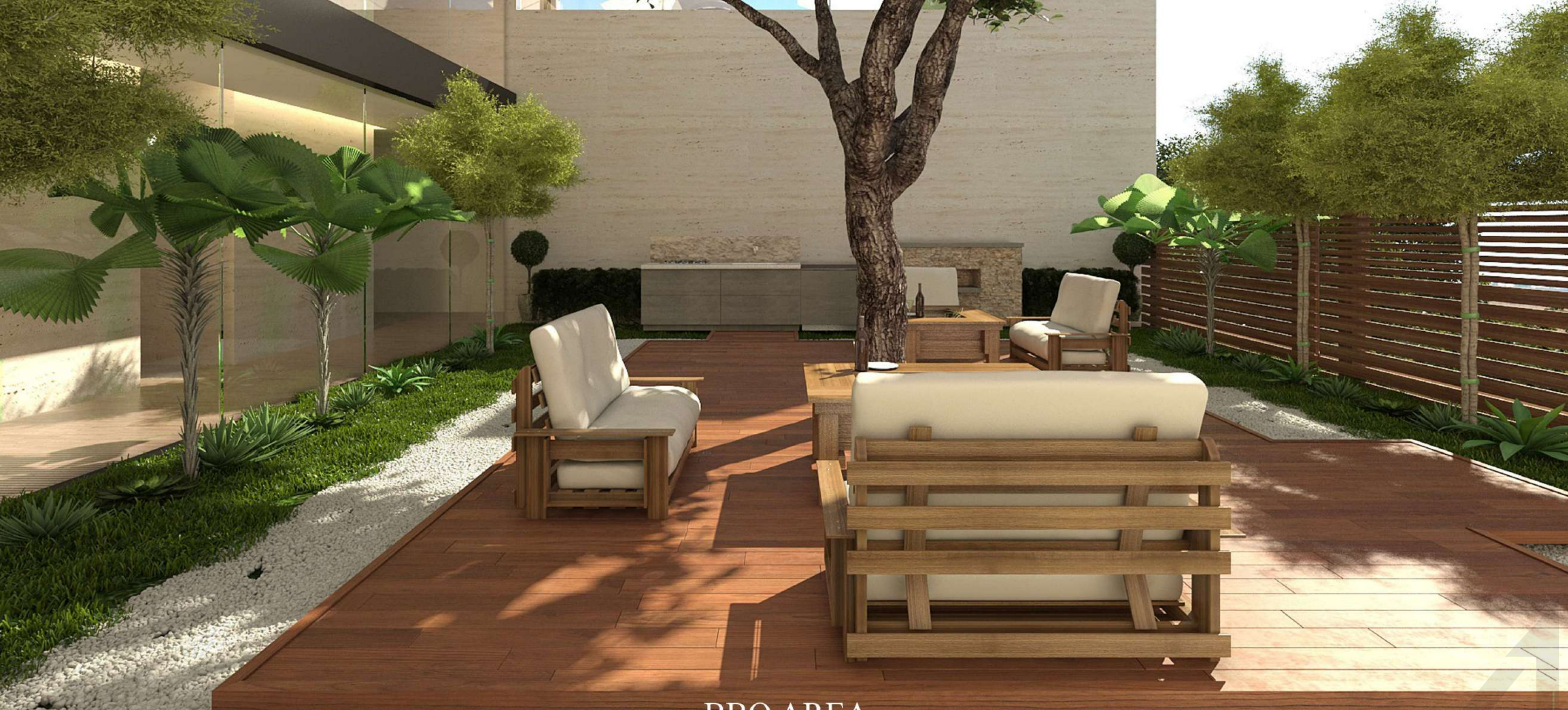
Harmonizing with the nature



Harmonizing with the horizon



A pool with a view



BBQ AREA

A woman with dark hair in a ponytail, wearing a black and grey striped sports top, is shown from the side, pulling a thick rope. She is in a gym setting with large windows in the background. The text "FORGE YOUR STRENGTH" is overlaid in a white, serif font.

FORGE YOUR
STRENGTH





Sculpt your strength and elevate your vitality



A Seamless Fusion of Elegance and Comfort



A Seamless Fusion of Elegance and Comfort



Your Tranquil Haven Awaits



spaces that inspire a sense of balance and refined living



Slumber in the Lap of luxury and Serenity





"The Collection" is a pinnacle of architectural finesse and holistic living. A symphony of nature-inspired luxury, this residential gem reimagines the essence of urban dwelling. "The Collection" introduces an impeccable fusion of serene landscapes and contemporary design.





Stunning bathrooms designs



CHOOSE
YOUR
PERFECT
SPACE

