

Vert

New Zayed

Palmier

DEVELOPMENTS

Palmier Developments, founded in 2016 as an S.A.E. company, aims to redefine luxury living in Egypt through innovative, high-quality real estate developments. From the beginning, it has focused on delivering unique and distinguished properties that stand out in the market. Specializing in boutique compound concepts, Palmier designs exclusive communities that combine privacy, sophistication, and modern living. With a strong commitment to quality, sustainability, and customer satisfaction, the company has built a reputation for excellence, serving a diverse and discerning clientele while steadily establishing itself as an industry leader.

Palmier

DEVELOPMENTS



About the Project
 Launched in 2019, Zayard Villa was Palmier's first project in New Zayed, spanning 33,600 m². The compound features 47 villas-both row houses and standalone units-designed with modern architecture to offer luxury living surrounded by greenery.



About the Project
 Zayard Elite is a 15-feddan upscale compound in New Zayed featuring Royal Standalone and Twin Villas, top-tier amenities, and a commercial strip. Positioned on three main streets with scenic views, it offers a luxurious and community-focused lifestyle.



About the Project
 ZDeveloped in 2017, Zayard Residence is a 10,500 m² compound in New Zayed City offering studios, apartments, duplexes, and penthouses. Created in response to demand for apartment living, it provides a comfortable, flexible lifestyle amidst lush greenery and scenic landscapes.



About the Project
 Zayard Avenue is a 21,000 m² upscale compound in New Zayed City, known for its innovation and elegance. It offers Royal Twin Villas, Town Houses, and a variety of apartments in smart, energy-efficient homes surrounded by lush greenery.



About the Project
 Zayard Trio is a premium residential compound that blends sustainability with luxury, offering eco-friendly features and high-end amenities to meet the demand for environmentally conscious, upscale living. urious residential spaces.



About the Project
 Launched in 2024, Zayard North Strike is a premier residential compound in New Zayed, symbolizing wealth, prosperity, and tranquility. It offers a luxurious lifestyle seamlessly integrated with natural beauty.
 Terrace Villa



About the Project
 Project Location: Sheikh Zayed, Giza
 Project Program : Residential Compound & Commercial Area
 Project Area : 126,000 m²
 Four different types for the standalone villas percentage is 75% from total Residential area.
 Twin villa area percentage is 25% from total Residential area.

STRATEGIC PARTNERSHIP & ALLIANCES

Palmier | Melee |  QUEENS CLINIC |  TA
DESIGN STUDIO

Vert

Located in the best area in Sheikh Zayed - New Zayed,
One minutes from Wasit Dhahshour &
Five minutes from the most Elite Compounds in Sheikh Zayed
(Emar-Sodic-Beverly Hills-Belle vie) & Ten minutes from
Sphinx Airport

Residential Compound - All Villas
Living Compound Built on a High Hills



Sphinx International Airport

Alex-Cairo Road

Al Dabaa Road

Solana west ORA

Sodic

Bellevie Emaar

Vert

Zayard Elite

Al Nada Hospital

Beverly Hills

Allegria

Al Rabwa

Al-Ahly Club

Strip Mall

Ruya Club

El Sheikh Zayed

Jiran Palm Hills
Mountain View
Sky of Nations

Zayard North Strike

Zayard Trio

Zayard Villa

Sheikh Zayed Hospital

Hyper one

Zayard Avenue

Zayard Residence

Boulevard Road

Wasit-Dahshour Road

Cairo University

Nile University

Arkan Plaza

26 July Axis

Zayard Memora

Mountain View-chillout

Neom

Mall Of Arabia

Dar Al Fouad

MUST

Wasit-Dahshour Road

6 October City

Mall Of Egypt

Vert

Mission

To deliver a wellness-centric, family-friendly community that blends modern neo-minimalist architecture with expansive green spaces, ensuring comfort, privacy, sustainability, and smart living for all generations.

Vision

To set the benchmark for refined, eco-conscious villa living in New Zayed by harmoniously integrating nature and contemporary design, creating a serene, resort-like lifestyle where residents thrive physically, mentally, and socially.

Four different types for the standalone villas percentage is 75% from total Residential area.

Twin villa area percentage is 25% from total Residential area.

126,000 SQUARE METER



85%

LANDSCAPE

WELLNESS LIVING COMPOUNDS

**EVERY SINGLE VILLA AT VERT
HAS A VIEW OF ^{01/}
LUSH LANDSCAPES OR ^{02/}
TRANQUIL WATER FEATURES**

FACILITIES & LIFESTYLE AMENITIES

Sustainable Design Features – Eco-friendly materials, smart water systems, and energy-efficient lighting.
Property Management Services – Professional facility management for maintenance and operations.



CLUBHOUSE & COMMUNITY HUB

A MODERN SOCIAL CENTER FEATURING LOUNGES, MEETING
AREAS, AND EVENT SPACES FOR RESIDENTS' GATHERINGS.



WELLNESS & FITNESS CENTER

GYM, YOGA STUDIOS, AND SPA FACILITIES PROMOTING A
HEALTHY, BALANCED LIFESTYLE.

SWIMMING POOLS

RESORT-STYLE POOLS DESIGNED
FOR BOTH RELAXATION AND RECREATION.



SPORTS FACILITIES

OUTDOOR COURTS FOR PADEL, TENNIS,
AND BASKETBALL TO ENCOURAGE ACTIVE LIVING.

LANDSCAPED GARDENS & GREEN ZONES

WIDE GREEN AREAS WITH WALKING PATHS AND
SHADED SEATING FOR RELAXATION.



JOGGING & CYCLING TRACKS
DEDICATED OUTDOOR TRACKS FOR FITNESS AND LEISURE.



KIDS' PLAY AREAS

SAFE, ENGAGING ZONES FOR CHILDREN WITH CREATIVE AND EDUCATIONAL ELEMENTS.



OUTDOOR LOUNGE & CAFÉ SPACES

SCENIC SPOTS FOR CASUAL DINING AND SOCIALIZING WITHIN
THE COMMUNITY.

Vert

24/7 SECURITY SYSTEM

GATED ACCESS AND SURVEILLANCE ENSURING PRIVACY AND PEACE OF MIND.

Vert

THE HIDDEN GARDENS

**"À Place That Reveals Itself Slowly."
Palmier Hidden Gardens Welcome
to a world of hidden gardens and
shifting paths. Skewed axes and
veiled views create a journey of
discovery, where nature wraps
around walls, rooftops, and silence.
Nothing is revealed all at once and
that's the magic.**



VERT VIEW



Vert

MASTER PLAN



Map key

- 1. Club House
- 2. Queens Clinic (london)
- 3. Olivier Villa - BUA = 275 Sqm
- 4. Acacia Villa - BUA = 314 Sqm
- 5. Sylva Villa - BUA = 335 Sqm
- 6. Le Varanda Villa - BUA = 400 Sqm
- 7. Le Lilas Villa - BUA = 258 Sqm



KEY PLAN PHASE 1



PROTOTYPES

Lilas Villa

01/ Twin House Royal Villas
258m²

Varanda - Sylva - Acacia - Olivier

02/ Standalone Royal Villas
Starting from 275m² to 400m²

OLIVIER VILLA

SIDE VILLA

PRONUNCIATION: OH-LIV-YAY VILLA

OLIVIER VILLA TAKES ITS NAME FROM THE OLIVIER, THE OLIVE TREE, A SYMBOL OF PEACE, NATURE, AND TIMELESS MEDITERRANEAN ELEGANCE. THIS IDENTITY PERFECTLY REFLECTS THE VILLA'S UNIQUE ARCHITECTURAL ADVANTAGE: A GENEROUS SIDE GARDEN THAT DEFINES ITS LIFESTYLE EXPERIENCE. CONCEPT THEME: THE VILLA WITH THE SIGNATURE SIDE GARDEN

BRAND PERSONALITY:
NATURAL · PRIVATE · FAMILY-ORIENTED





Olivier Villa

Oh-liv-YAY villa

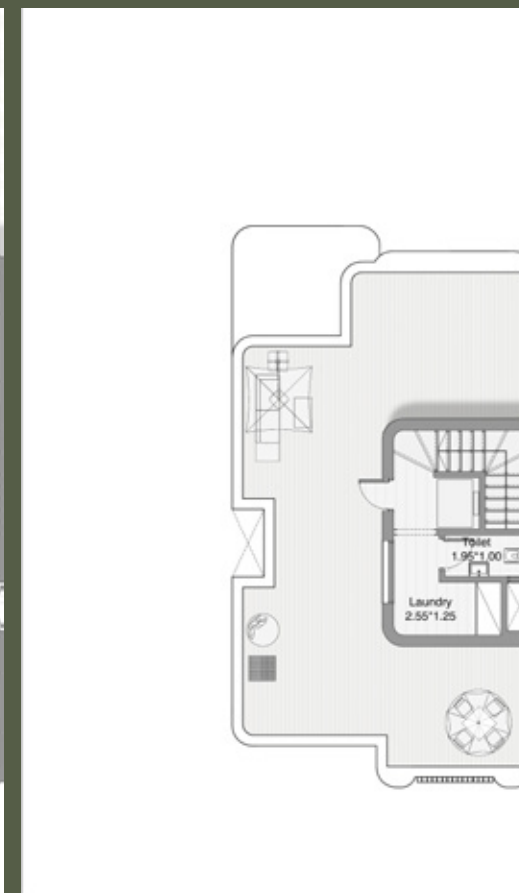
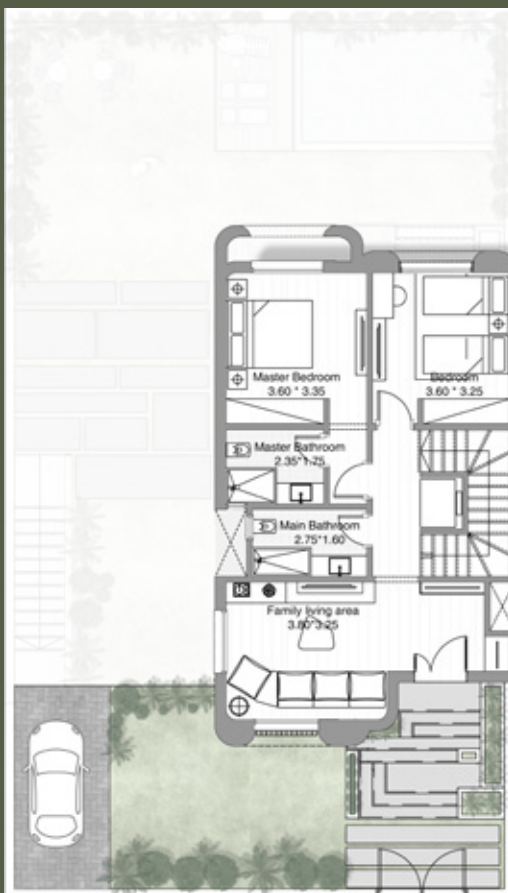
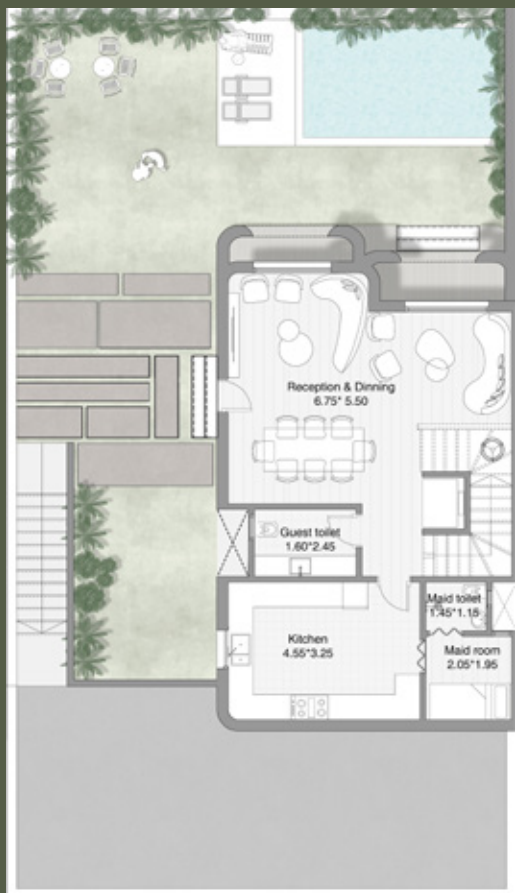
• BUA = 275 Sqm • Land Area Range = 255 : 350 Sqm

Guest floor

Family floor

Royal floor

Roof floor



ACACIA VILLA

STANDALONE

PRONUNCIATION: AH-KAH-SEE-AH VILLA

ACACIA VILLA TAKES ITS NAME FROM THE ACACIA TREE, A SYMBOL OF RESILIENCE, ELEGANCE, AND NATURAL BEAUTY. THE VILLA IS DESIGNED AS A LUXURIOUS STANDALONE HOME FULLY INTEGRATED WITH GREENERY, EMPHASIZING WELLNESS, PRIVACY, AND A CONNECTION TO NATURE.

BRAND PERSONALITY:

ELEGANT · PRIVATE · NATURE-CONNECTED · WELLNESS-FOCUSED





Acacia Villa

ah-KAH-see-ah villa

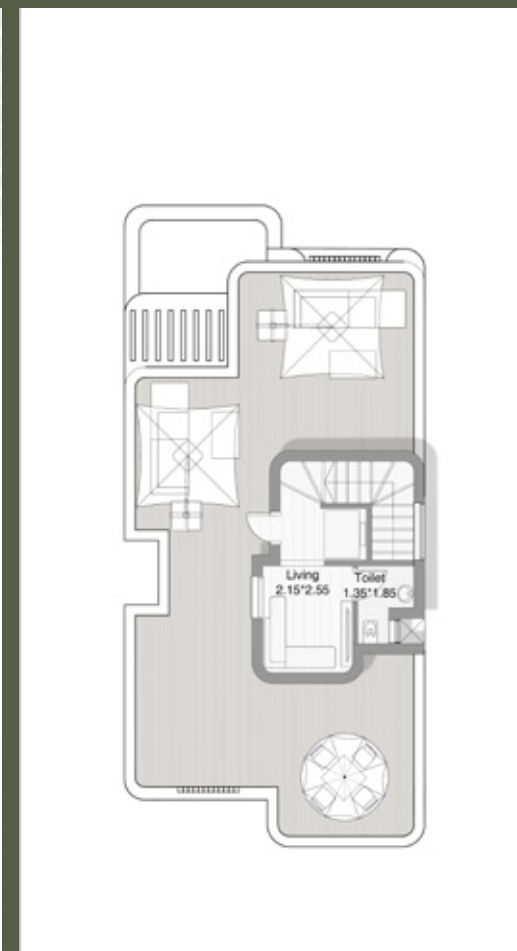
• BUA = 314 Sqm • Land Area Range = Sqm 270 : 285

Guest floor

Family floor

Royal floor

Roof floor



SYLVA VILLA

STANDALONE

PRONUNCIATION: SEEL-VAH VILLA

SYLVA COMES FROM THE CLASSICAL FRENCH/ LATIN WORD "SYLVA" MEANING FOREST, WOODLAND, NATURAL SANCTUARY. IT PERFECTLY MATCHES YOUR WELLNESS AND FOREST-THEMED DEVELOPMENT.

BRAND PERSONALITY:
ELEGANT · PRIVATE · NATURE-CONNECTED · WELLNESS-FOCUSED



Sylva Villa

SEEL-vah villa

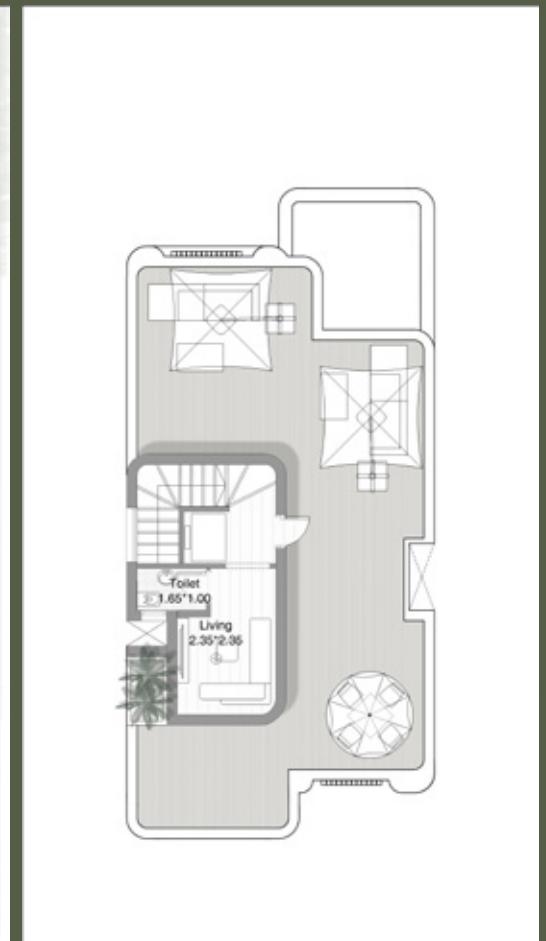
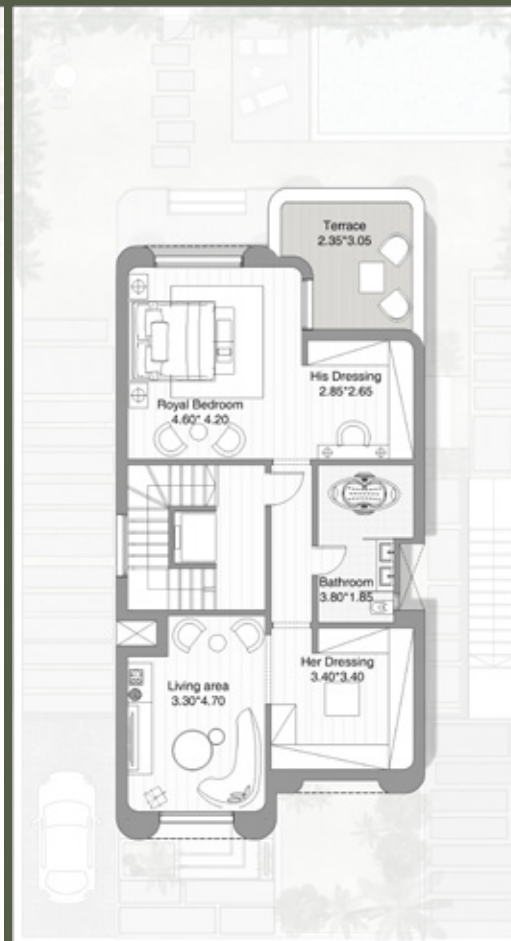
• BUA = 335 Sqm • Land Area Range = Sqm 280 : 455

Guest floor

Family floor

Royal floor

Roof floor



LE VARANDA VILLA

SPECIAL VILLA

PRONUNCIATION: LUH VAH-RAN-DAH

INSPIRED BY THE FRENCH WORD VÉRANDA, LE VARANDA REFLECTS OPENNESS, INDOOR-OUTDOOR HARMONY, AND EXPANSIVE LIVING. THE NAME INSTANTLY COMMUNICATES LIGHT, SPACE, AND UNOBSTRUCTED VIEWS, IDEAL FOR YOUR SPECIAL VILLAS LOCATED ON THE PROJECT'S PRIME SIGHTLINES.

BRAND PERSONALITY:
ELEGANT · OPEN · PREMIUM · NATURE-- THE LARGEST VILLA TYPE, STRATEGICALLY POSITIONED FOR PREMIUM PANORAMAS OVER THE GREEN CORRIDORS, WATER FEATURES, OR MAIN LANDSCAPE AXIS. - INCLUDES A HUGE PRIVATE BACKYARD SUITABLE FOR A POOL, OUTDOOR LOUNGE, AND WELLNESS DECK.

BRAND PERSONALITY:
ELEGANT · PRIVATE · NATURE-CONNECTED · WELLNESS-FOCUSED





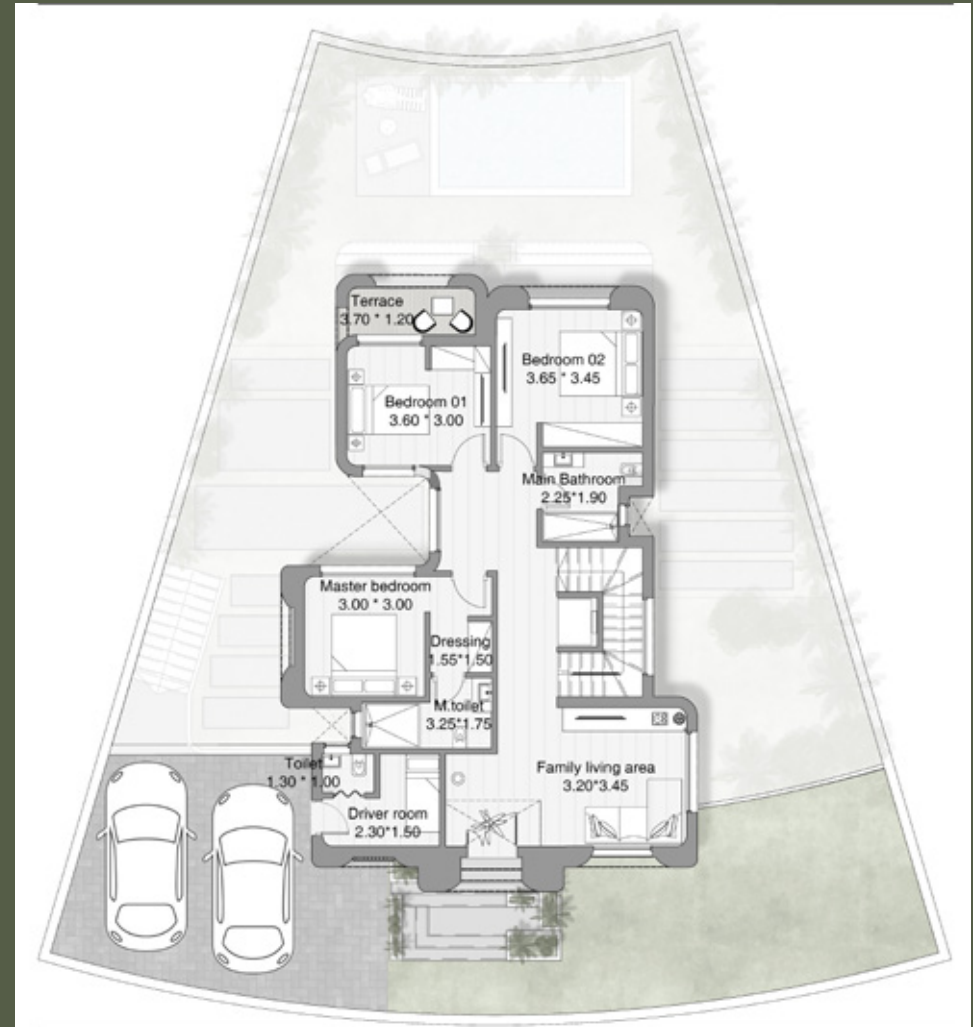
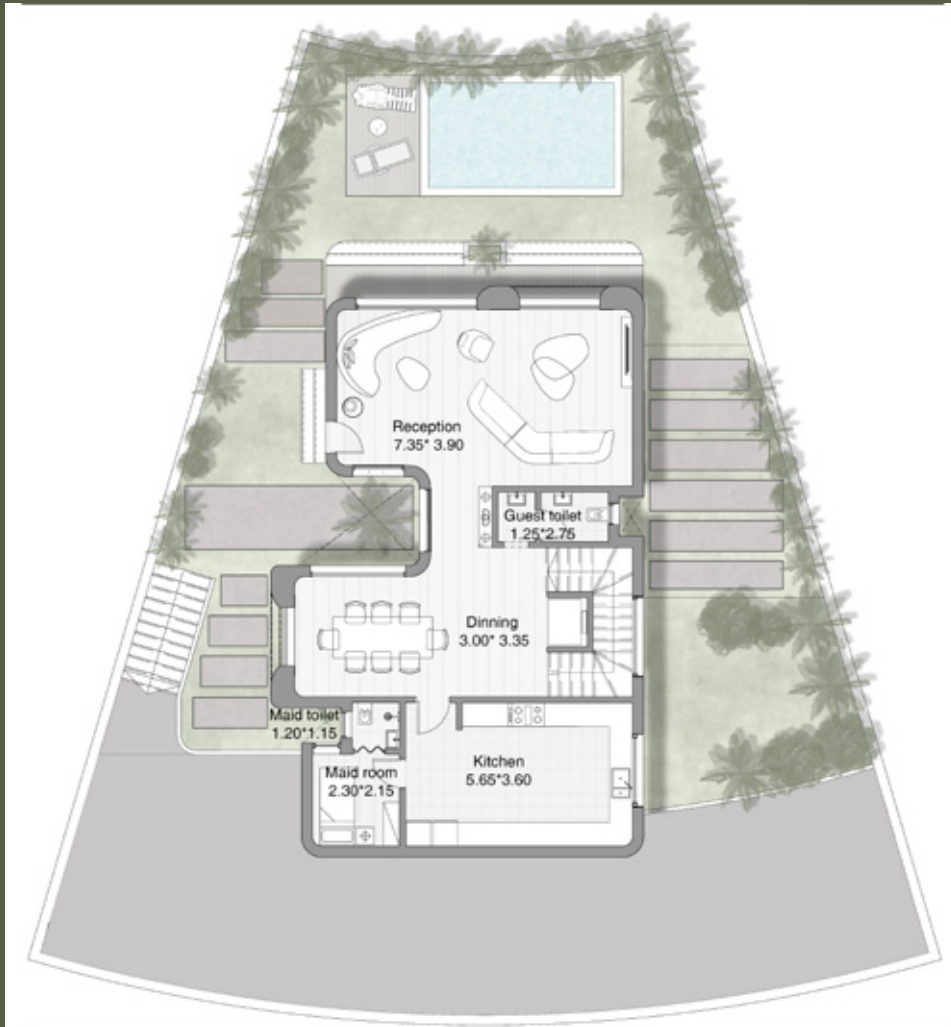
Le Varanda Villa

Iuh vah-RAN-dah

• BUA = 400 Sqm • Land Area Range = 390 : 456 Sqm

Guest floor

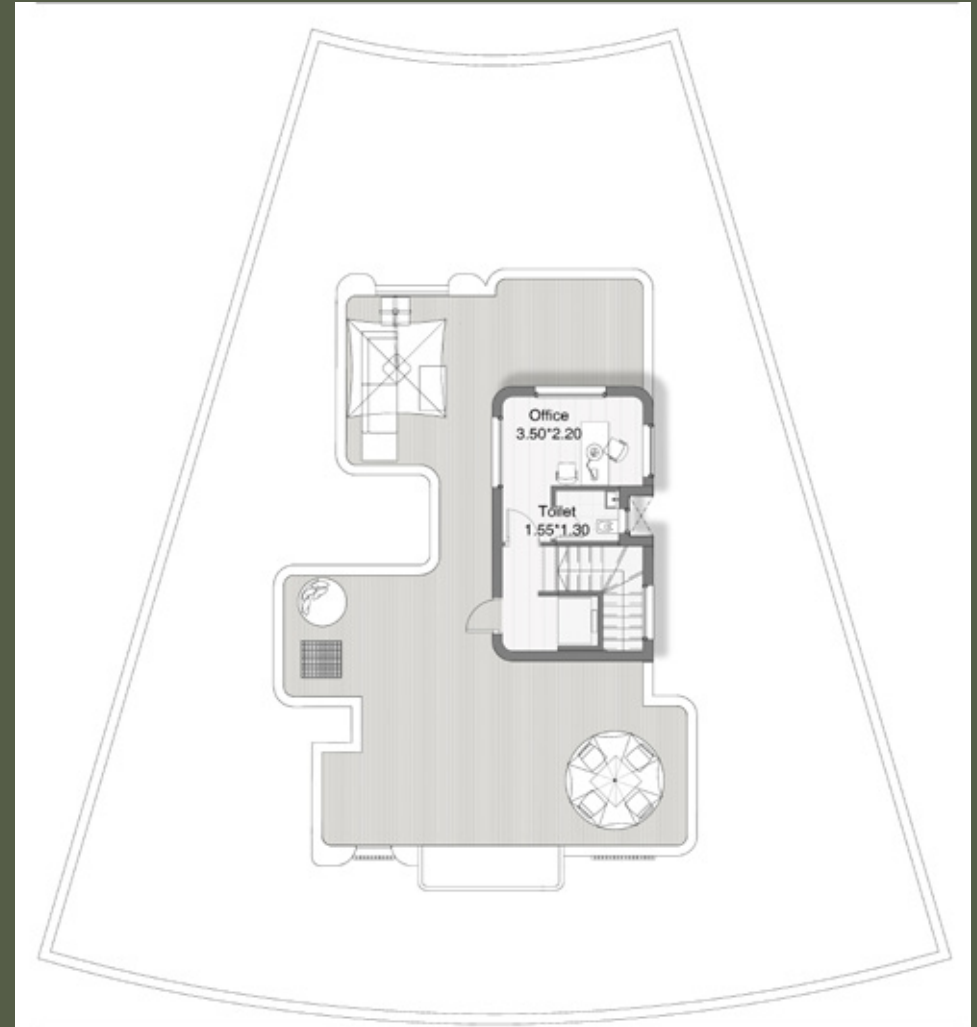
Family floor



Royal floor



Roof floor



LE LILAS VILLA

TWIN VILLA

PRONUNCIATION: LUH LEE-LAH

LE LILAS IS INSPIRED BY THE LILAC FLOWER, WHICH SYMBOLIZES GRACE, ELEGANCE, AND GENTLE BEAUTY. ITS SOFT PETALS AND DELICATE FRAGRANCE CONVEY A SENSE OF REFINED RICHNESS AND CALM LUXURY, MAKING IT A PERFECT NAME FOR TWIN VILLAS DESIGNED FOR HARMONY AND SERENE LIVING

BRAND PERSONALITY:

ELEGANT · SOFT · REFINED ·
NATURE-CONNECTED · HARMONIOUS





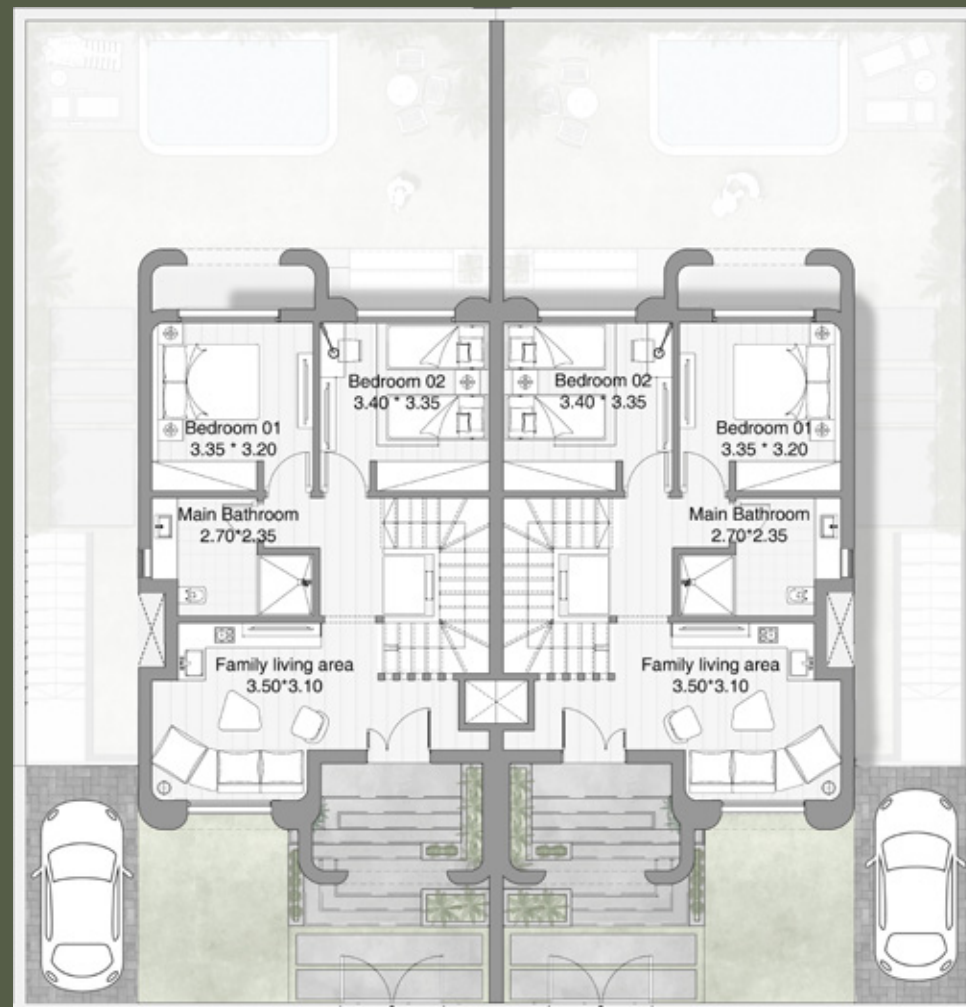
Le Lilas Villa

Iuh lee-LAH

• BUA = 258 Sqm • Land Area Range = 190 : 285 Sqm

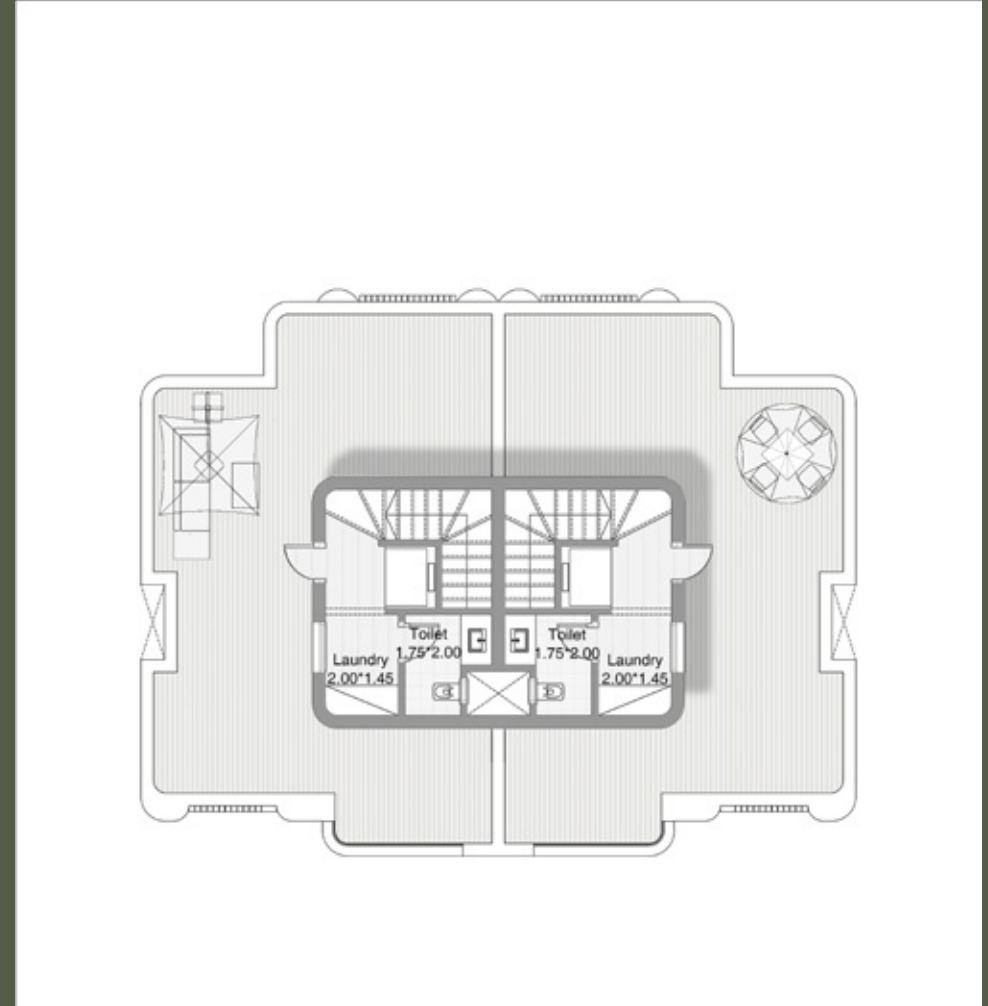
Guest floor

Family floor



Royal floor

Roof floor



Vert

New Zayed

Palmier | Melee |  QUEENS CLINIC |  TA DESIGN STUDIO