

ORI.

SHEIKH ZAYED

Warmth Remains



(LIVE, LAUGH, BREATH)

It matters when it remains

/The Developer



Lorem ipsum dolor sit amet, consectetur adipiscing elit, sed diam nonummy nibh euismod tincidunt ut Lorem ipsum dolor sit amet, consectetur adipiscing elit, sed diam nonummy nibh euismod tincidunt ut Lorem ipsum dolor sit amet, consectetur adipiscing elit, sed diam nonummy nibh euismod tincidunt ut Lorem ipsum dolor sit amet, consectetur adipiscing elit, sed diam nonummy nibh euismod tincidunt ut Lorem ipsum dolor sit amet, consectetur adipiscing elit, sed diam nonummy nibh euismod tincidunt ut

/The Project

S H E I K H Z A Y E D

Moments Pass

/

Warmth Remains

ORI.

ORI Compound is an exclusive boutique residential community located in the heart of Sheikh Zayed, offering a perfect fusion of modern luxury and tranquil living. Thoughtfully designed to deliver exceptional comfort and convenience, the compound boasts world-class amenities, beautifully landscaped green spaces, and a vibrant, close-knit community.

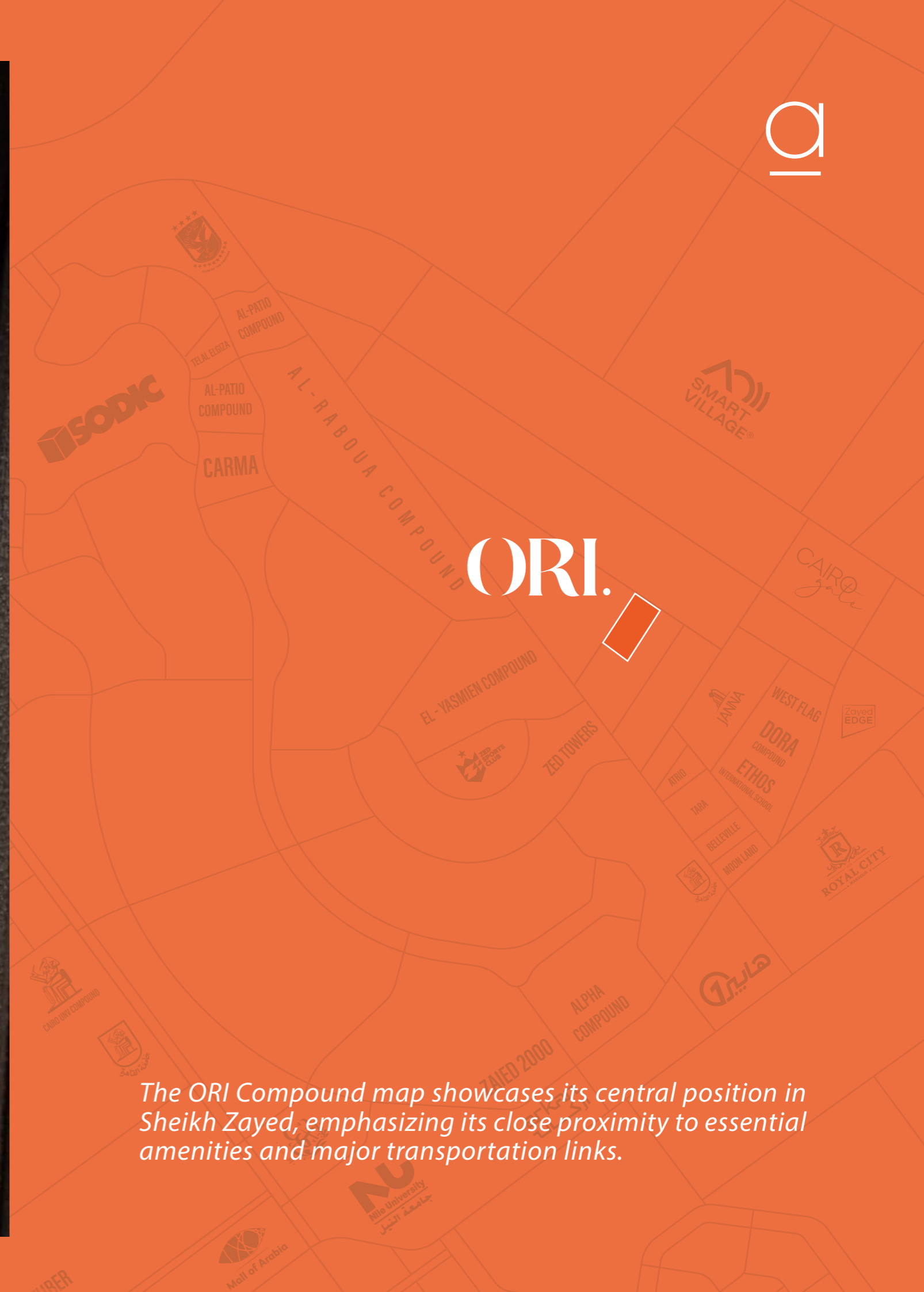
Its prime location provides seamless access to essential services, prestigious schools, and upscale shopping destinations, making it the ideal choice for families and professionals seeking a refined, sophisticated lifestyle.

/The Location



ORI.

The ORI Compound map showcases its central position in Sheikh Zayed, emphasizing its close proximity to essential amenities and major transportation links.



/The Location



Your Modern Oasis
in the Heart of Sheikh Zayed

ORI.

ORI Compound offers the perfect blend of natural tranquility and modern luxury, with lush green spaces, walking trails, and sustainable designs. Featuring diverse leisure facilities, advanced security, and eco-friendly solutions, ORI delivers a refined lifestyle that combines comfort, elegance, and a true sense of community.

ORI.

/LIVE/

/EXTERIOR DESIGN/

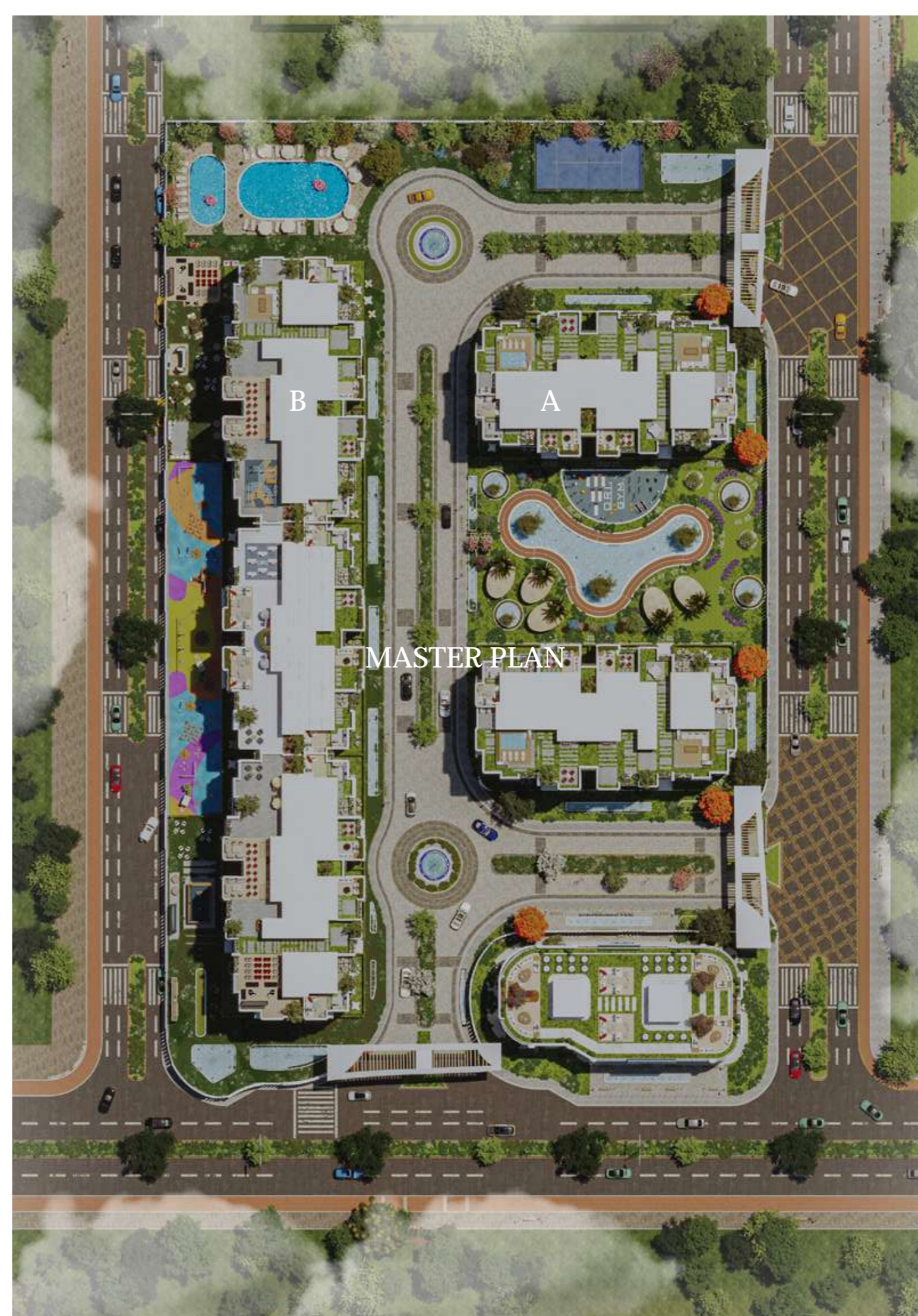
The exterior of ORI Compound embodies a seamless fusion of modern sophistication and natural charm. Its sleek architecture is defined by elegant facades and expansive windows that flood interiors with natural light while offering captivating views.

Around the buildings, beautifully landscaped gardens, tranquil water features, and welcoming communal areas create a serene and picturesque setting, elevating the overall living experience for residents.

/Master Plan

ORI.

The master plan of ORI Compound presents a meticulously crafted layout that harmoniously blends expansive green spaces, contemporary architectural designs, and well-planned communal areas, resulting in a balanced and vibrant living environment.



ORI, Elevate Your Luxury Life.

ORI.

ORI
COMPOUND

GATE
NO. 1

ORI, Gated Community.



ORI

ORI, Elevate Your Luxury Life.

ORI, SHEIKH ZAYED.

ORI.

ORI, Elevate Your Luxury Life.



ORI.

ORI, Elevate Your Luxury Life.



ORI.

ORI, Elevate Your Luxury Life.



ORI.

ORI, Elevate Your Luxury Life.



ORI.

ORI, Elevate Your Luxury Life.



ORI.

ORI, Elevate Your Luxury Life.





S H E I K H Z A Y E D



ORI.

Amenities

CLUB HOUSE

A stylish hub for socializing and community events.

S H E I K H Z A Y E D

ORI.



/ CENTRAL PARK

A lush green sanctuary for relaxation and leisure.

S H E I K H Z A Y E D

ORI.

Amenities /

/ PADEL COURT

Modern courts for an exciting game anytime.

ORI.

S H E I K H Z A Y E D

Amenities /

/ CAFÉS & RESTAURANTS

Dining and shopping made convenient.

S H E I K H Z A Y E D

ORI.

Amenities /

/ SWIMMING POOLS

Sparkling pools for both relaxation and recreation.

S H E I K H Z A Y E D

ORI.

Amenities /

/ HEALTHCARE FACILITIES

Quality medical care within the community.

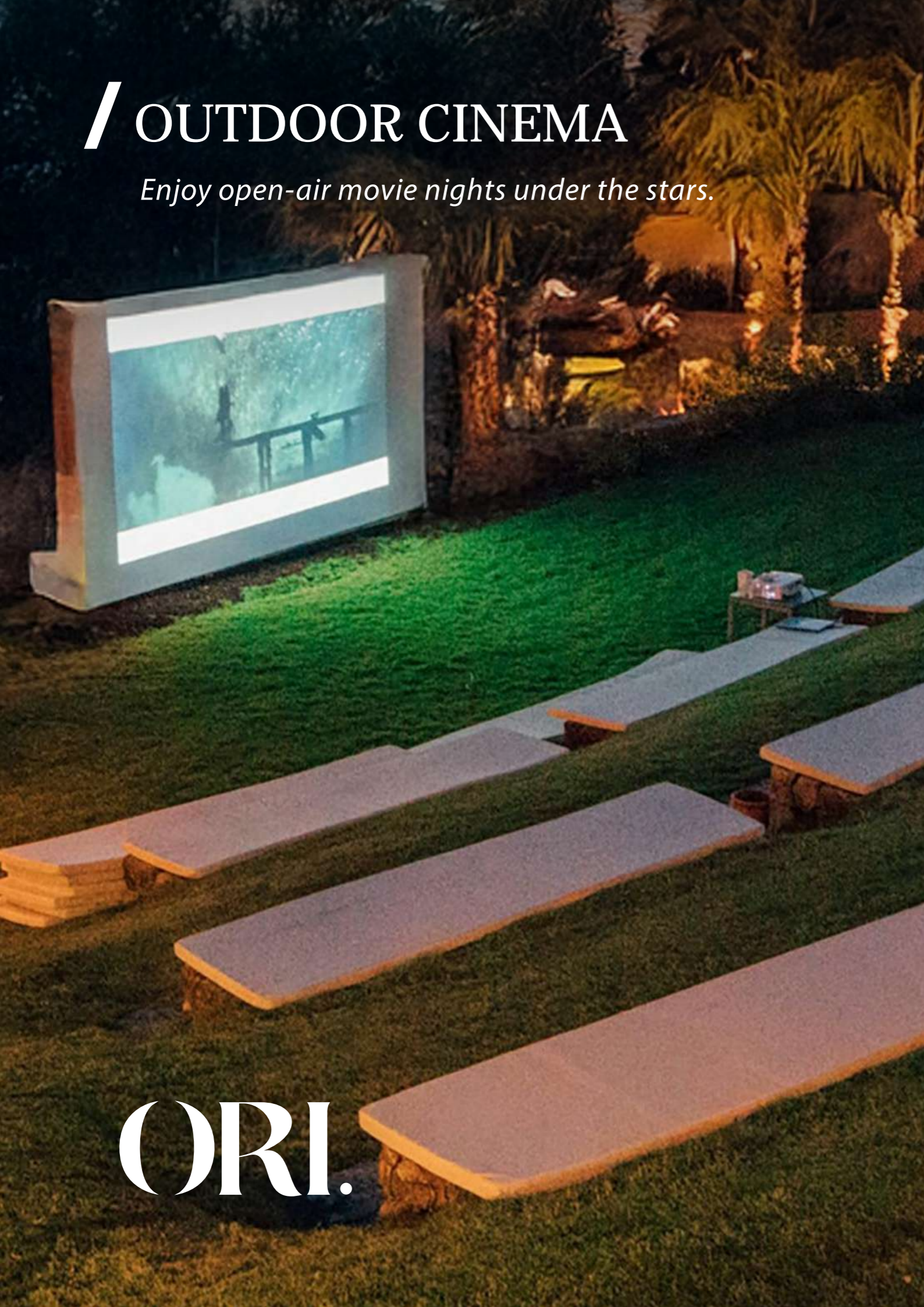
S H E I K H Z A Y E D

ORI.

Amenities /

/ OUTDOOR CINEMA

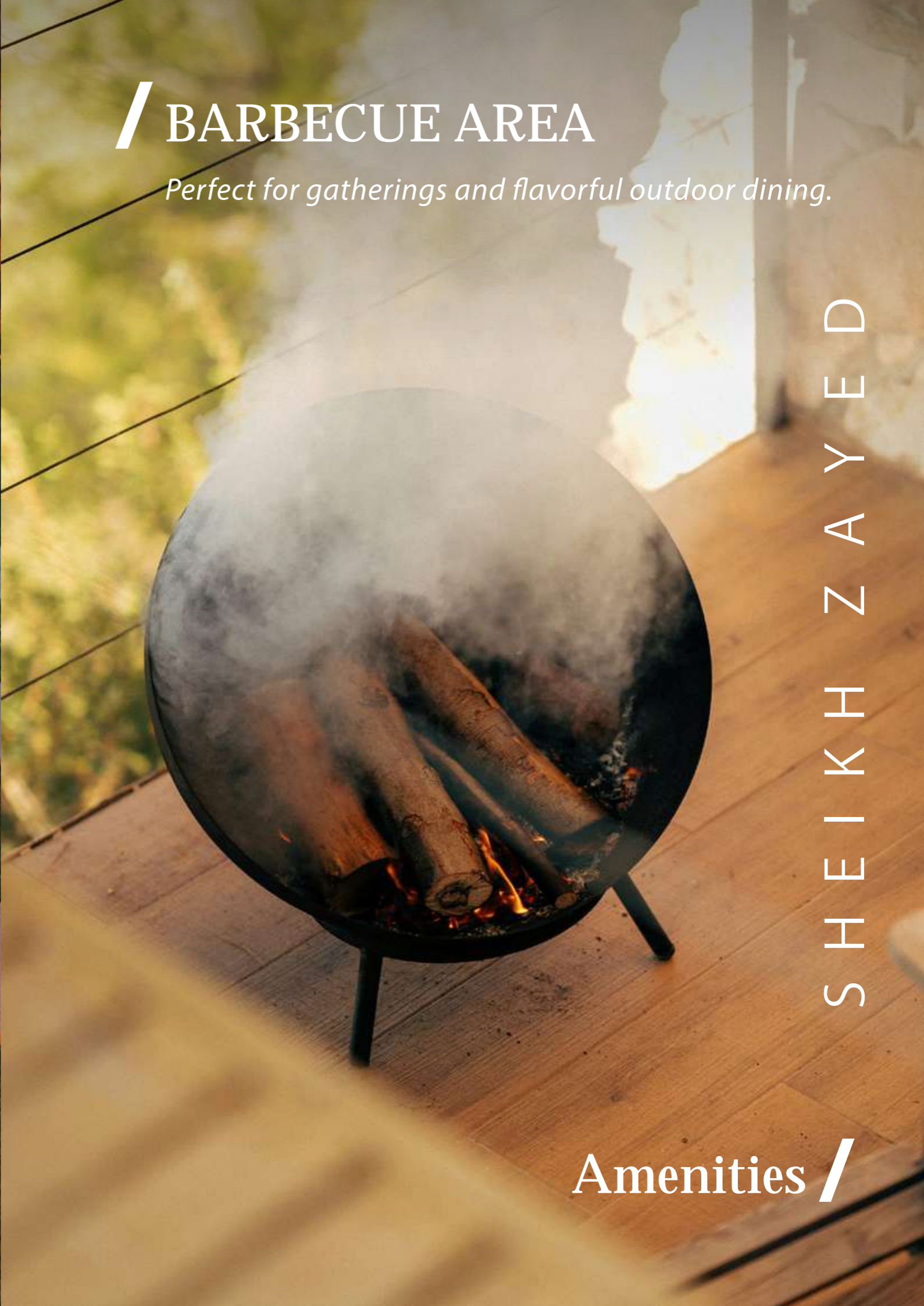
Enjoy open-air movie nights under the stars.



ORI.

/ BARBECUE AREA

Perfect for gatherings and flavorful outdoor dining.



S H E I K H / Z A Y E D

Amenities /

/ JOGGING TRACK

Scenic paths designed for an active lifestyle.

/ SPORTS AREA

Perfect for gatherings and flavorful outdoor dining.

ORI.

S H E I K H Z A Y E D

Amenities /



/ BICYCLE LANE

Dedicated cycling paths for healthy, eco-friendly mobility.



/ GYM

Perfect for gatherings and flavorful outdoor dining.

ORI.

S H E I K H Z A Y E D

Amenities /

/ COMMERCIAL AREA

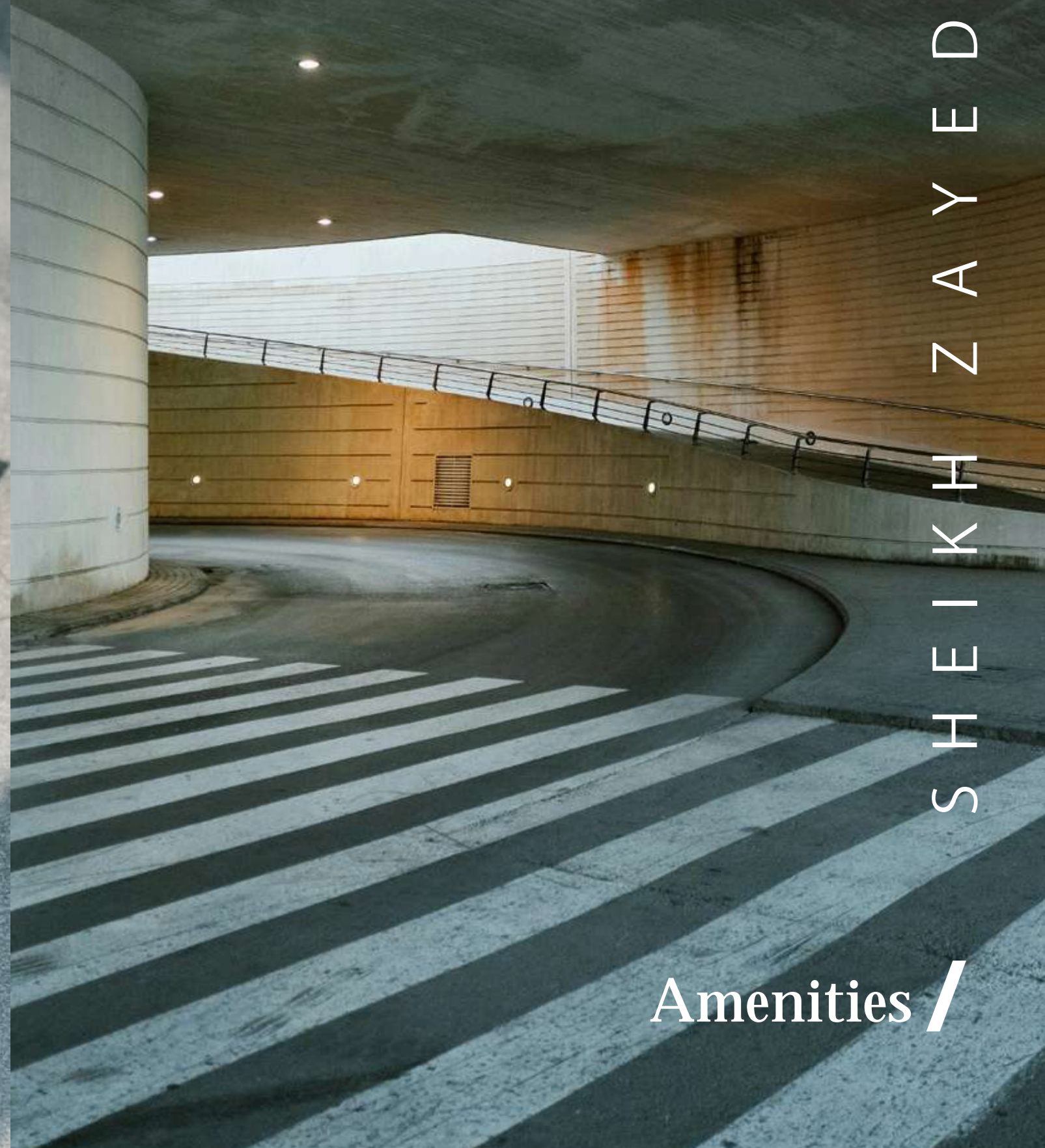
Shops and services at your doorstep.



ORI.

/ UNDERGROUND PARKING

Secure, convenient parking for residents and guests.



S H E I K H Z A Y E D

Amenities /

/ UNDERGROUND PARKING

Secure, convenient parking for residents and guests.

S H E I K H Z A Y E D

Amenities /

/ ELECTRIC CHARGING STATIONS

Supporting sustainable transportation.

ORI.

/ OUTDOOR KIDS AREA

Safe, fun spaces where little ones can explore and play.

S H E I K H Z A Y E D

Amenities /



INTERIOR



DESIGN.

ORI.

/ RECEPTION



S H E I K H Z A Y E D



ORI.

Interior Design /

/ RECEPTION

S H E I K H Z A Y E D



ORI.

Interior Design /

/ INTERIOR

S H E I K H Z A Y E D



ORI.

Interior Design /

/ INTERIOR

S H E I K H Z A Y E D

ORI.

Interior Design /



/ INTERIOR

S H E I K H Z A Y E D

ORI.

Interior Design /

/ INTERIOR

S H E I K H Z A Y E D

ORI.

Interior Design /



/ INTERIOR

S H E I K H Z A Y E D

ORI.

Interior Design /



/ Floor Plans

/ Building A



ORI.

FLOORPLANS

ORI.

ORI, Elevate Your Luxury Life.



ORI.

ORI, Elevate Your Luxury Life.



ORI.

ORI, Elevate Your Luxury Life.





ORI.

/ Building A

ORI, Elevate Your Luxury Life.

GROUND FLOORS



Ground Floor
122 m2

Reception	7.35 x 3.50	m2
Master Room	3.90 x 3.60	m2
M.Bathroom	1.85 x 1.70	m2
M.dressing	1.85 x 1.60	m2
Bedroom 1	3.30 x 3.10	m2
Bedroom 2	3.20 x 3.10	m2
Bathroom	2.70 x 1.70	m2
Kitchen	2.70 x 2.00	m2

Garden 47 m2



Ground Floor
122 m2

Reception	7.35 x 3.50	m2
Master Room	3.90 x 3.60	m2
M.Bathroom	1.85 x 1.70	m2
M.dressing	1.85 x 1.60	m2
Bedroom 1	3.30 x 3.10	m2
Bedroom 2	3.20 x 3.10	m2
Bathroom	2.70 x 1.70	m2
Kitchen	2.70 x 2.00	m2

Garden 47 m2



Ground Floor
170 m2

Reception	6.05 x 3.88	m2
M.Bedroom	5.17 x 3.12	m2
Bedroom 1	3.88 x 3.45	m2
Bedroom 2	3.38 x 3.00	m2
Living	5.30 x 3.50	m2
Toilet	2.10 x 1.10	m2
Bathroom	2.50 x 1.80	m2
Kitchen	5.20 x 2.50	m2
Guest Toilet	2.10 x 1.10	m2

Garden 60 m2





Ground Floor
122 m2

Reception	7.35 x 3.50	m2
Master Room	3.90 x 3.60	m2
M.Bathroom	1.85 x 1.70	m2
M.dressing	1.85 x 1.60	m2
Bedroom 1	3.30 x 3.10	m2
Bedroom 2	3.20 x 3.10	m2
Bathroom	2.70 x 1.70	m2
Kitchen	2.70 x 2.00	m2

Garden 47 m2



Ground Floor
122 m2

Reception	7.35 x 3.50	m2
Master Room	3.90 x 3.60	m2
M.Bathroom	1.85 x 1.70	m2
M.dressing	1.85 x 1.60	m2
Bedroom 1	3.30 x 3.10	m2
Bedroom 2	3.20 x 3.10	m2
Bathroom	2.70 x 1.70	m2
Kitchen	2.70 x 2.00	m2

Garden 47 m2



Ground Floor
170 m2

Reception	6.05 x 3.88	m2
M.Bedroom	5.17 x 3.12	m2
Bedroom 1	3.88 x 3.45	m2
Bedroom 2	3.38 x 3.00	m2
Living	5.30 x 3.50	m2
Toilet	2.10 x 1.10	m2
Bathroom	2.50 x 1.80	m2
Kitchen	5.20 x 2.50	m2
Guest Toilet	2.10 x 1.10	m2

Garden 60 m2



/ Floor Plans

/ Building A



ORI.

TYPICAL FLOORS



Typical Floor
137 m2

Typical Floor
137 m2

Typical Floor
116 m2

Typical Floor
116 m2

Reception	7.50 x 3.50	m2
Master Room	3.92 x 3.60	m2
M.Bathroom	1.70 x 1.84	m2
M.dressing	1.62 x 1.84	m2
M.Terrcae	1.12 x 1.20	m2
Bedroom 1	4.80 x 3.20	m2
Bedroom 2	3.10 x 3.80	m2
Bathroom	2.70 x 1.70	m2
Kitchen	2.70 x 2.00	m2
Terrace	1.50 x 3.50	m2

Reception	7.50 x 3.50	m2
Master Room	3.92 x 360	m2
M.Bathroom	1.70 x 1.84	m2
M.dressing	1.62 x 1.84	m2
M.Terrcae	1.12 x 1.20	m2
Bedroom 1	4.80 x 3.20	m2
Bedroom 2	3.10 x 3.80	m2
Bathroom	2.70 x 1.70	m2
Kitchen	2.70 x 2.00	m2
Terrace	1.50 x 3.50	m2

Reception	9.59 x 3.50	m2
Guest Toilet	2.08 x 1.10	m2
Master Room	3.58 x 3.70	m2
M.Terrcae	1.50 x 1.60	m2
Bedroom	3.88 x 4.95	m2
Bathroom	2.48 x 1.80	m2
Kitchen	2.20 x 2.70	m2
Terrace	3.50 x 1.50	m2

Reception	9.59 x 3.50	m2
Guest Toilet	2.08 x 1.10	m2
Master Room	3.58 x 3.70	m2
M.Terrcae	1.50 x 1.60	m2
Bedroom	3.88 x 4.95	m2
Bathroom	2.48 x 1.80	m2
Kitchen	2.20 x 2.70	m2
Terrace	3.50 x 1.50	m2





Typical Floor
116 m2

Typical Floor
116 m2

Typical Floor
66 m2

Typical Floor
137 m2

Reception	9.59 x 3.50	m2
Master Room	3.70 x 3.60	m2
M.Terrace	1.60 x 1.50	m2
Bedroom	4.95 x 3.90	m2
Bathroom	2.50 x 1.80	m2
Kitchen	2.20 x 2.20	m2
Guest toilet	2.10 x 1.10	m2
Terrace	3.50 x 1.50	m2

Reception	9.59 x 3.50	m2
Bedroom 1	3.70 x 3.60	m2
Room Terrace	1.60 x 1.50	m2
Bedroom 2	4.95 x 3.90	m2
Bathroom	2.50 x 1.80	m2
Kitchen	2.20 x 2.20	m2
Guest toilet	2.10 x 1.10	m2
Terrace	3.50 x 1.50	m2

Reception	6.00 x 3.00	m2
Bedroom	4.85 x 3.00	m2
Bathroom	3.00 x 1.70	m2
Kitchen	3.00 x 1.20	m2
Terrace	3.00 x 1.50	m2

Reception	7.50 x 3.50	m2
Master Room	3.92 x 3.60	m2
M.Bathroom	1.84 x 1.70	m2
M.dressing	1.84 x 1.62	m2
M.Terrace	1.20 x 1.12	m2
Bedroom 1	4.80 x 3.68	m2
Bedroom 2	3.80 x 3.10	m2
Bathroom	2.70 x 1.70	m2
Kitchen	2.70 x 2.00	m2
Terrace	3.50 x 1.50	m2



ORI. _____ ORI, Building A, Typical floor.

/ Building A



Typical Floor
137 m2

Reception	7.30 x 3.50	m2
M.Bedroom	3.92 x 3.60	m2
M.Bathroom	1.84 x 1.70	m2
M.Dressing	1.84 x 1.62	m2
Room Terrace	1.20 x 1.10	m2
Bedroom 1	3.80 x 3.10	m2
Bedroom 2	4.80 x 3.20	m2
Bathroom	2.70 x 1.70	m2
Kitchen	2.70 x 2.00	m2

Terrace 3.50 x 1.50 m2



Typical Floor
64 m2

Reception	6.00 x 3.00	m2
Bedroom	4.25 x 3.00	m2
Bathroom	3.10 x 1.60	m2
Kitchen	3.00 x 1.20	m2
Terrace	3.00 x 1.50	m2



SKY VILLAS

SKY VILLA
230 m²



First Floor

Reception	7.34 x 3.50	m ²
M.Bedroom	3.92 x 3.60	m ²
M.Bathroom	1.84 x 1.70	m ²
M.Dressing	1.62 x 1.84	m ²
M.Terrace	1.20 x 1.10	m ²
Bedroom 1	4.80 x 3.20	m ²
Bedroom 2	3.80 x 3.10	m ²
Bathroom	2.70 x 1.70	m ²
Kitchen	2.70 x 2.00	m ²
Terrace	3.50 x 1.20	m ²



Second Floor

Living Room	7.12 x 5.30	m ²
M.Bedroom	3.70 x 3.20	m ²
M.Bathroom	1.80 x 1.60	m ²
M.Dressing	1.80 x 1.50	m ²
Kitchen	2.70 x 2.00	m ²
Guest Toilet	2.10 x 1.10	m ²

Terrace 108 m²



SKY VILLA
225 m²



First Floor

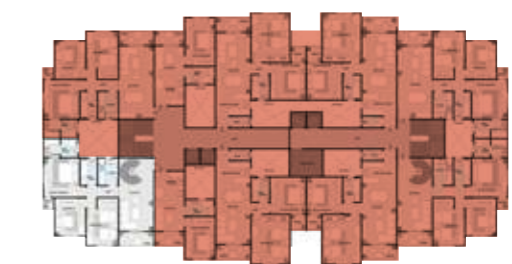
Reception	7.34 x 3.50	m ²
M.Bedroom	3.92 x 3.60	m ²
M.Bathroom	1.84 x 1.70	m ²
M.Dressing	1.62 x 1.84	m ²
M.Terrace	1.20 x 1.10	m ²
Bedroom 1	4.80 x 3.20	m ²
Bedroom 2	3.80 x 3.10	m ²
Bathroom	2.70 x 1.70	m ²
Kitchen	2.70 x 2.00	m ²
Terrace	3.50 x 1.20	m ²



Second Floor

Living Room	5.60 x 6.60	m ²
M.Bedroom	3.70 x 3.20	m ²
M.Bathroom	1.80 x 1.60	m ²
M.Dressing	1.80 x 1.50	m ²

Terrace 80 m²





STUDIO
60 m²

Living & Kitchen	5.30 x 3.50 m ²
Bedroom	3.90 x 3.70 m ²
Bathroom	2.10 x 1.10 m ²

Terrace 40 m²

STUDIO



/ Floor Plans

/ Building B



ORI.

FLOORPLANS

ORI.

ORI, Elevate Your Luxury Life.



ORI.

ORI, Elevate Your Luxury Life.



ORI.

ORI, Elevate Your Luxury Life.



ORI.

ORI, Elevate Your Luxury Life.



ORI.

/ Building B



GROUND FLOORS



Ground Floor
122 m2

Ground Floor
122 m2

Ground Floor
119 m2

Ground Floor
122 m2

Reception	8.37 x 3.50	m2
M.Bedroom	3.90 x 3.60	m2
M.Dressing	1.85 x 1.60	m2
M.Bathroom	1.85 x 1.70	m2
Bedroom 1	3.30 x 3.20	m2
Bedroom 2	3.30 x 3.10	m2
Bathroom	2.50 x 1.80	m2
Kitchen	2.70 x 2.00	m2

Reception	8.37 x 3.50	m2
M.Bedroom	3.90 x 3.60	m2
M.Dressing	1.85 x 1.60	m2
M.Bathroom	1.85 x 1.70	m2
Bedroom 1	3.30 x 3.20	m2
Bedroom 2	3.30 x 3.10	m2
Bathroom	2.50 x 1.80	m2
Kitchen	2.70 x 2.00	m2

Reception	8.37 x 3.50	m2
Bedroom 1	3.90 x 3.45	m2
Bedroom 2	3.70 x 3.60	m2
Bathroom	2.50 x 1.80	m2
Kitchen	2.70 x 2.00	m2
Guest Toilet	2.10 x 1.10	m2

Reception	8.37 x 3.50	m2
Bedroom 1	3.90 x 3.45	m2
Bedroom 2	3.70 x 3.60	m2
Bathroom	2.50 x 1.80	m2
Kitchen	2.70 x 2.00	m2
Guest Toilet	2.10 x 1.10	m2

Garden 47 m2

Garden 47 m2

Garden 34 m2

Garden 34 m2



ORI. _____ ORI, Building B, ground floor.

/ Building B



Ground Floor
99 m²

Ground Floor
52 m²

Reception	9.69 x 3.50 m ²
Bedroom 1	3.88 x 3.45 m ²
Bedroom 2	3.70 x 3.57 m ²
Bathroom	2.50 x 1.80 m ²
Kitchen	2.10 x 2.10 m ²
Guest Toilet	2.06 x 1.10 m ²

Reception	5.00 x 3.88 m ²
Bed room	3.70 x 3.57 m ²
Bathroom	1.80 x 1.80 m ²

Garden 26 m²

Garden 18 m²



TYPICAL FLOORS



Typical Floor
137 m2

Typical Floor
137 m2

Typical Floor
116 m2

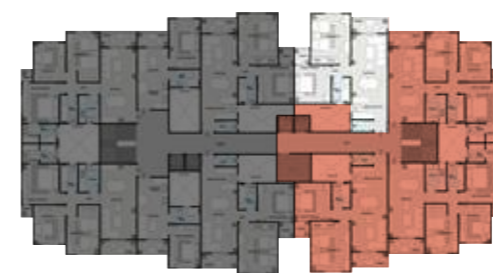
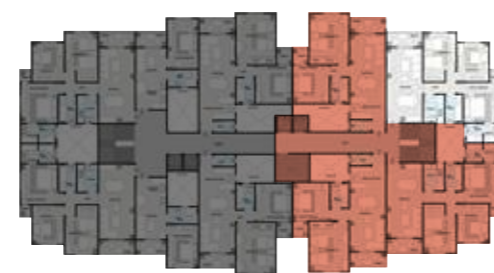
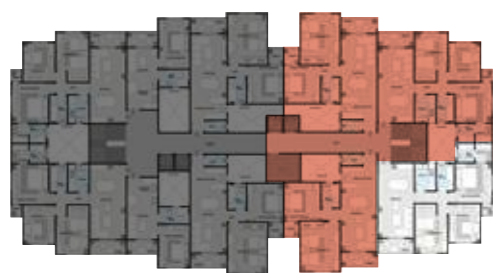
Typical Floor
116 m2

Reception	7.50 x 3.50	m2
Master Room	3.92 x 3.60	m2
M.Bathroom	1.70 x 1.84	m2
M.dressing	1.62 x 1.84	m2
M.Terrcae	1.12 x 1.20	m2
Bedroom 1	4.80 x 3.20	m2
Bedroom 2	3.10 x 3.80	m2
Bathroom	2.70 x 1.70	m2
Kitchen	2.70 x 2.00	m2
Terrace	1.50 x 3.50	m2

Reception	7.50 x 3.50	m2
Master Room	3.92 x 3.60	m2
M.Bathroom	1.70 x 1.84	m2
M.dressing	1.62 x 1.84	m2
M.Terrcae	1.12 x 1.20	m2
Bedroom 1	4.80 x 3.20	m2
Bedroom 2	3.10 x 3.80	m2
Bathroom	2.70 x 1.70	m2
Kitchen	2.70 x 2.00	m2
Terrace	1.50 x 3.50	m2

Reception	9.59 x 3.50	m2
Guest Toilet	2.10 x 1.10	m2
Master Room	3.60 x 3.70	m2
M.Terrcae	1.60 x 1.50	m2
Bedroom	4.95 x 3.90	m2
Bathroom	2.50 x 1.80	m2
Kitchen	2.20 x 2.20	m2
Terrace	3.50 x 1.50	m2

Reception	9.59 x 3.50	m2
Guest Toilet	2.10 x 1.10	m2
Master Room	3.60 x 3.70	m2
M.Terrcae	1.60 x 1.50	m2
Bedroom	4.95 x 3.90	m2
Bathroom	2.50 x 1.80	m2
Kitchen	2.20 x 2.20	m2
Terrace	3.50 x 1.50	m2





Typical Floor
116 m2

Typical Floor
116 m2

Typical Floor
66 m2

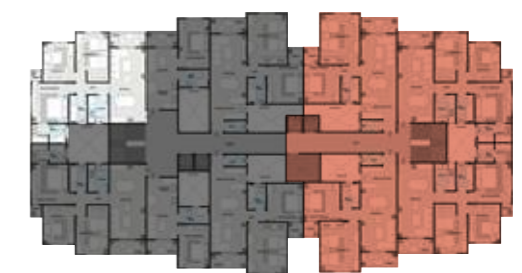
Typical Floor
137 m2

Reception	9.59 x 3.50	m2
Master Room	3.70 x 3.60	m2
M.Terrace	1.60 x 1.50	m2
Bedroom 2	4.95 x 3.90	m2
Bathroom	2.10 x 1.10	m2
Kitchen	3.50 x 2.20	m2
Terrace	3.50 x 1.50	m2

Reception	9.59 x 3.50	m2
Bedroom 1	3.70 x 3.60	m2
Room Terrace	1.60 x 1.50	m2
Bedroom 2	4.95 x 3.90	m2
Bathroom	2.50 x 1.80	m2
Kitchen	2.20 x 2.20	m2
Guest toilet	2.10 x 1.10	m2
Terrace	3.50 x 1.50	m2

Reception	6.00x 3.00	m2
Bedroom	4.85 x 3.00	m2
Bathroom	3.00 x 1.70	m2
Kitchen	3.00 x 1.20	m2
Terrace	3.00 x 1.50	m2

Reception	7.34 x 3.50	m2
Master Room	3.92 x 3.60	m2
M.Bathroom	1.84 x 1.70	m2
M.dressing	1.84 x 1.62	m2
M.Terrace	1.20 x 1.12	m2
Bedroom 1	4.80 x 3.68	m2
Bedroom 2	3.80 x 3.10	m2
Bathroom	2.70 x 1.70	m2
Kitchen	2.70 x 2.00	m2
Terrace	3.50 x 1.50	m2



ORI. _____ ORI, Building B, Typical floor.

/ Building B



Typical Floor
137 m²

Typical Floor
64 m²

Reception	7.34 x 3.50	m ²
Master Room	3.92 x 3.60	m ²
M.Bathroom	1.84 x 1.70	m ²
M.dressing	1.84 x 1.62	m ²
M.Terrace	1.20 x 1.12	m ²
Bedroom 1	4.80 x 3.68	m ²
Bedroom 2	3.80 x 3.10	m ²
Bathroom	2.70 x 1.70	m ²
Kitchen	2.70 x 2.00	m ²
Terrace	3.50 x 1.50	m ²

Reception	6.00 x 3.00	m ²
Bedroom	4.25 x 3.00	m ²
Bathroom	3.10 x 1.60	m ²
Kitchen	3.00 x 1.20	m ²
Terrace	3.00 x 1.50	m ²



SKY VILLAS

SKY VILLA
260 m²



First Floor

Reception	7.34 x 3.50	m ²
M. Bedroom	3.92 x 3.60	m ²
M. Bathroom	1.84 x 1.70	m ²
M. Dressing	1.62 x 1.84	m ²
M. Terrace	1.20 x 1.10	m ²
Bedroom 1	4.80 x 3.20	m ²
Bedroom 2	3.80 x 3.10	m ²
Bathroom	2.70 x 1.70	m ²
Kitchen	2.70 x 2.00	m ²
Terrace	3.50 x 1.20	m ²



Second Floor

Living Room	7.12 x 5.30	m ²
M. Bedroom	3.70 x 3.20	m ²
M. Bathroom	1.80 x 1.60	m ²
M. Dressing	1.80 x 1.50	m ²
Guest Toilet	2.10 x 1.10	m ²

Terrace 135 m²



SKY VILLA
250 m²



First Floor

Reception	7.34 x 3.50	m ²
M. Bedroom	3.92 x 3.60	m ²
M. Terrace	1.20 x 1.10	m ²
Bedroom 1	4.80 x 3.20	m ²
Bedroom 2	3.80 x 3.10	m ²
Bathroom	2.70 x 1.70	m ²
Kitchen	2.70 x 2.00	m ²
Terrace	3.50 x 1.20	m ²



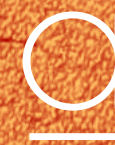
Second Floor

Living Room	11.10 x 5.30	m ²
M. Bedroom	3.70 x 3.20	m ²
M. Bathroom	1.80 x 1.60	m ²
M. Dressing	1.80 x 1.50	m ²
Guest Toilet	2.10 x 1.10	m ²

Terrace 110 m²



/LIVE/



Seasons
//change,

(A sense of
belonging remains)

SHEIKH ZAYED